



Sesame Motor Corp., A leading brand in gear technology.

PRECISION GEAR MOTOR

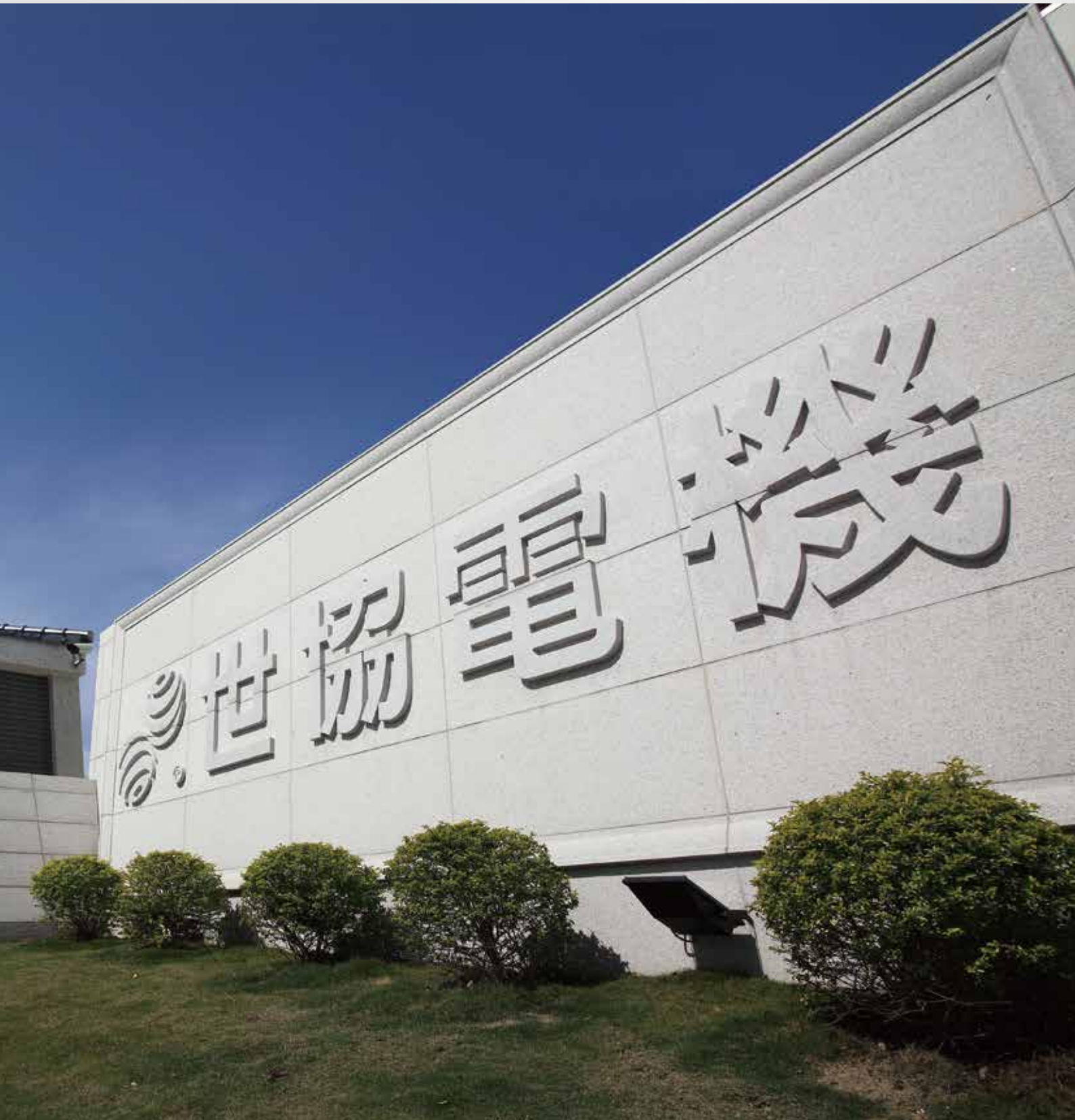
V-CASING & FOOT-MOUNT TYPES



100%
Made in Taiwan

www.sesamemotor.com





Company Profile

Sesame Motor Corp., as a leading brand in Motor and gear reducer technology. "SESAME MOTOR CORP." Founded in 1990, have more than 25 years of professional motor and gearbox manufacturing and sales experience. SESAME MOTOR's 7000 square meters factory locates at Sheng Kang. Adding modern workshop facilities with the effective integration of ERP systems, purchase new processing and testing equipment; as we continuously enhance key parts' productivity we had not only expending overall productivity, shorten delivery, and ensure products' quality to achieve customer satisfaction. SESAME MOTOR products have received unanimous praise.



Quality Policy :

- "Honesty" , to provide integrity and pragmatic services
- "Creativity" to create customer competitive advantage
- "Positivity" , positive support and responsibility
- "Innovation" , moving forward of technical innovation

Environmental Policy :

- Full participation to comply with eco-regulation
- Prevent pollution; save energy and reduce waste
- Keep improving and propagating Green Concept



SESAME



世協電機股份有限公司
SESAME MOTOR CORP.

Company Profile

"SESAME MOTOR" is built base on spirit of "customer satisfaction, priority service" philosophy, providing three privileges "best quality, fastest delivery, and best sale service". Our products have obtained high market share in Taiwan, that had lead "SESAME MOTOR" be a well-known brand. In addition to our official branch in Shanghai, we have agents in the United States, Germany, Denmark, Poland, UK, Turkey, Russia, Korea, Japan, China, Thailand, Malaysia and India.

"SESAME MOTOR" also has a professional R & D team and experienced production-related sectors; can provide high accuracy products for different customer needs; high-quality gear and the surrounding transmission components, develop and produce other kinds of gear; customized motor products, products with detailed-oriented, high precision, low noise, high efficiency, and good quality properties. Product development are aiming three directions "science and technology, environmental protection, and innovation". Product will be used in tool machines, industrial robots, semiconductor devices, aircraft industrial, medical and rehabilitation equipment, electric scooter, electric bike, auto storage devices, green energy-related industries, testing and food machinery, bakery equipment, packaging machinery, agricultural equipment and other sophisticated automation equipment.





Company Profile

"SESAME MOTOR" has been successively obtained CE,CCC,UL, ISO9001 and ISO14001 certification and honorary awards. As we continuously, progressively for created finest quality products; with "Honesty" for providing integrity and pragmatic service; with "Creativity" given customer "Positivity" to support & responsible for the efficiency of productivity; with "Innovation" on profession and knowledge of knowhow, by these four philosophy management, we aims to become the first market trend indicators. "SESAME MOTOR" strong operating team adhere to the blue ocean strategy of entering the international market and high-tech field, to create the future more professional, better quality of sustainable management systems, establishment of "a combination of leading technology and brand reputation" for competitive advantage.



Trade Mark & Certification



CE Certification

UL Certification

ISO 9001:2015

ISO 14001:2015



China Compulsory Certification (CCC)



Planetary Gearhead PHL Series
China SIPO Patent



Registration Number : 8580921716



Registration Number : 38E08580



The United States, Canada, European Union, China, Taiwan, Japan, Korea, Iran, The Philippines, Vietnam, Indonesia, Malaysia, Singapore ...etc. trade mark certifications.



SESAME

Corporate Environment



PRECISION GEAR MOTOR





SESAME

Production Line



Servo Gearheads Production Line



Induction Motor and Speed Reducer
Production Line



Precision Gear Motor Production Line

Applications

Applications of Servo Gearhead

Machine Tools

Metal Cutting Machines, Machining Centers, CNC Drilling Machines, Lathes and Turning Machines, Milling and Boring Machines, Grinding Machines, Drilling Machines, Planning Machines, Metal Forming Machine Tools, Presses, Tube and Wire Processing Machines.

Industry Machinery

Packaging Machinery, Food and Beverage Processing Machinery, Bakery Equipment, Agricultural Machinery, Textile Machinery, Shoemaking Machinery, Wood Working Machinery, Printing Machinery, Plastic processing Machinery, Laser Cutting and Welding Machines.

Automation Equipment

Industrial Robots, Semiconductor Devices, Automatic Storage System, Surface Treatment Equipments.

Aerospace Industry

Medical and Rehabilitation Equipment

Electric Scooter

Green Energy-Related Industries

Testing Devices

Automation and Precise Positioning Equipment with Servo Motors

Motor and Reducer

- Machine Tool Accessories • Cutting Equipment • Bar Feeder
- Gilding Machine • Conveyor Equipment • Food Machine
- Screen Printing • Agricultural Machinery • Medical Equipment

Gear Motor and Reducer

- Machine Tool Accessories • Cutting Equipment • Bar Feeder
- Gilding Machine • Conveyor Equipment • Food Machine
- Screen Printing • Agricultural Machinery • Medical Equipment





TABLE OF CONTENTS



PRECISION GEAR MOTOR

- 13 Product Name Coding System
- 14 Ampere Table
- 15 Operation Manual
- 19 Specifications and Dimensions, V-casing Type
- 20 Specifications and Dimensions, Foot-mount Type





SESAME



V-CASING TYPE

- 21 V-casing Type Precision Gear Motor For ATC
- 23 V-casing Type , 100W ~ 400W
- 31 V-casing Type , 750W ~ 2200W

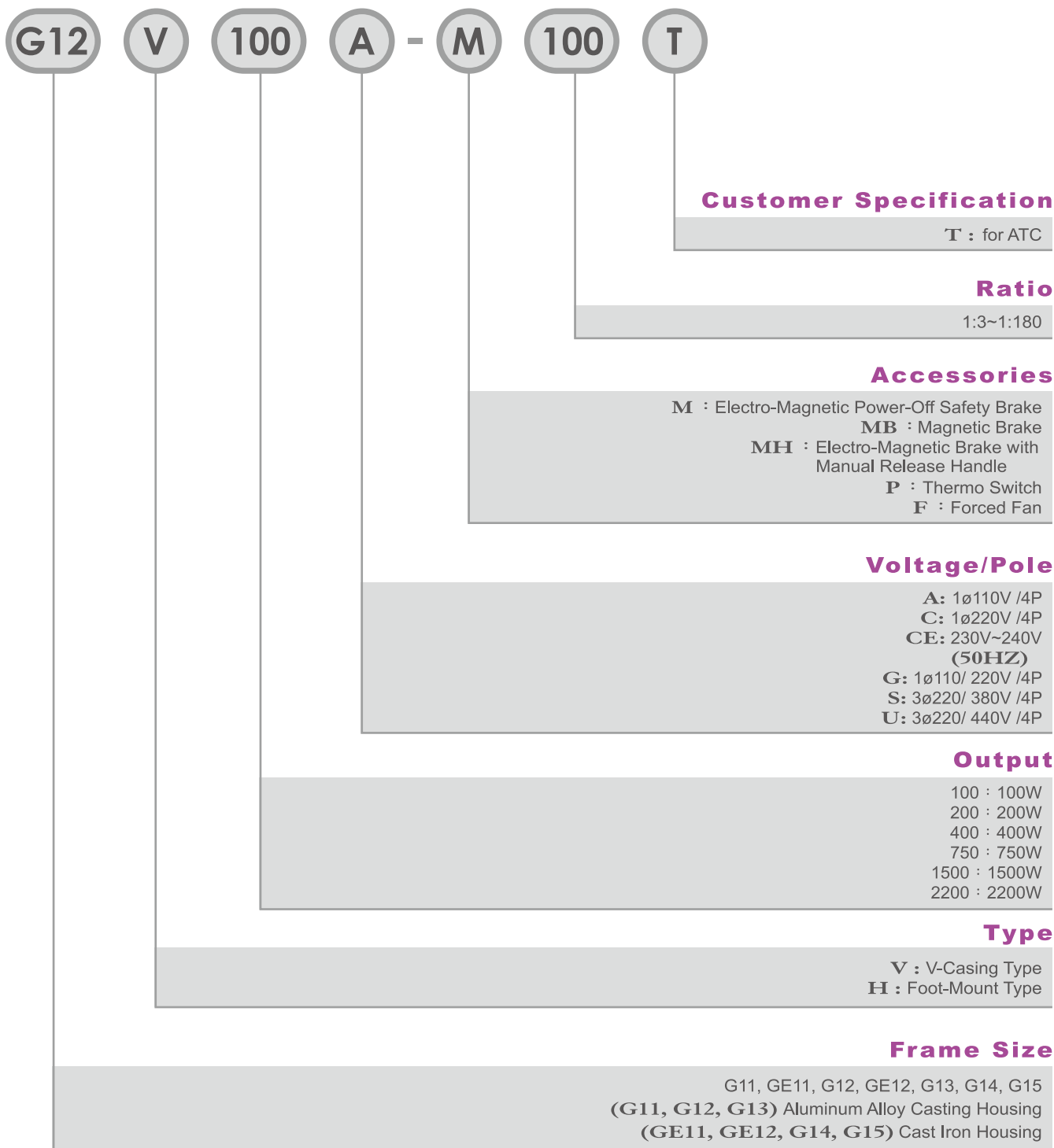


FOOT-MOUNT TYPE

- 38 Foot-mount Type , 100W ~ 400W
- 46 Foot-mount Type , 750W ~ 2200W

PRODUCT NAME CODING SYSTEM

PRECISION GEAR MOTOR



Products due to human error, natural disasters or other factors lead to poor or damaged, will not be covered under warranty.

AMPERE TABLE

| KW | Full Load Current (Amp) | | | | | | Full Load Revolutions (rpm) | |
|-------|-------------------------|------|------|------|---------|------|-----------------------------|------|
| | 3 Phase | | | | 1 Phase | | | |
| | 220V | | 380V | | 110V | 220V | 50HZ | 60HZ |
| | 50HZ | 60HZ | 50HZ | 60HZ | 60HZ | 60HZ | | |
| 100W | 0.66 | 0.58 | 0.35 | 0.32 | 1.41 | 0.79 | 1400 | 1700 |
| 200W | 1.28 | 1.29 | 0.72 | 0.66 | 2.59 | 1.42 | 1400 | 1700 |
| 400W | 2.28 | 1.87 | 1.32 | 1.09 | 5.36 | 2.79 | 1400 | 1700 |
| 750W | 3.2 | 2.98 | 1.9 | 1.71 | 10.35 | 5.18 | 1400 | 1700 |
| 1500W | 5.9 | 5.6 | 3.4 | 3.2 | - | - | 1400 | 1700 |
| 2200W | 8.88 | 8.09 | 5.09 | 4.71 | - | - | 1400 | 1700 |

Precision Gear Motor Operation Manual

1.Attention

1.1 Install Preparation

- Please read this operation manual before using this gear motor. Any problem caused by inappropriate operation contrary with the manual, or damage caused by natural disasters, or restructure without our permission, Sesame will not hold any responsibility nor will the gear motor be covered by warranty.
- Warranty is within one year after purchase. Within warranty period, if the gear motor damage is not caused by operation error nor by natural disaster, then please send back the gear motor, we should replace the damage spare part at free of charge.
- Please ensure correct power voltage supply before installaton.
- Do not bend the lead wires.
- Gear motor should be installed by trained technicians only.
- Please ground the gear motor according to the manual to prevent fire or electrical shock.
- Do not attempt to disassemble or modify gear motor.

1.2 Installation Conditions

The conditions below must be fulfilled to avoid any damage caused on the gear motor :

- The gear motor was designed to be installed on the other facilities or applications.
- Do not expose the gear motor to flammable or corrosive gas.
- Indoor applications only. Room temperature should be maintained between -10 ~ 50°C (-10~40°C for gear motor with capacitor).
- The air humidity should not exceed 85%.
- The altitude of where the gear motor was installed should not exceed 1000 m above the sea level.
- Do not expose the gear motor to the sunshine directly. Dust and spray of oil/water is also forbidden.
- Avoid any continuous vibration or impact on the gear motor.
- Ensure the gear motor was installed at a well ventilated location.

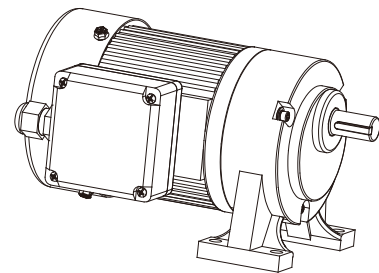
1.3 Preparation of Start up

- Please check the power supply before starting the gear motor.
- High temperature might cause the coil and bearing failed earlier.
- Do not connect the gear motor with inverter.
- Confirm the specification of capacitor before installation.
- The gear motor might burn out if wrong wiring or overloaded.

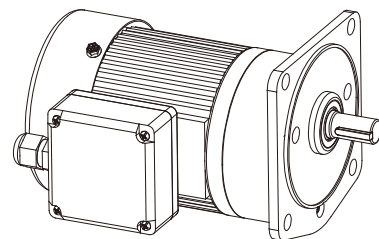
2.Loading Installation Method

The output shaft surface was precisely ground with a key, thus a keyway is necessary in the bore of the machine rotating element when mounting gear motor.

<Foot-Mount Type>



<V-Casing Type>



⚠ Attention

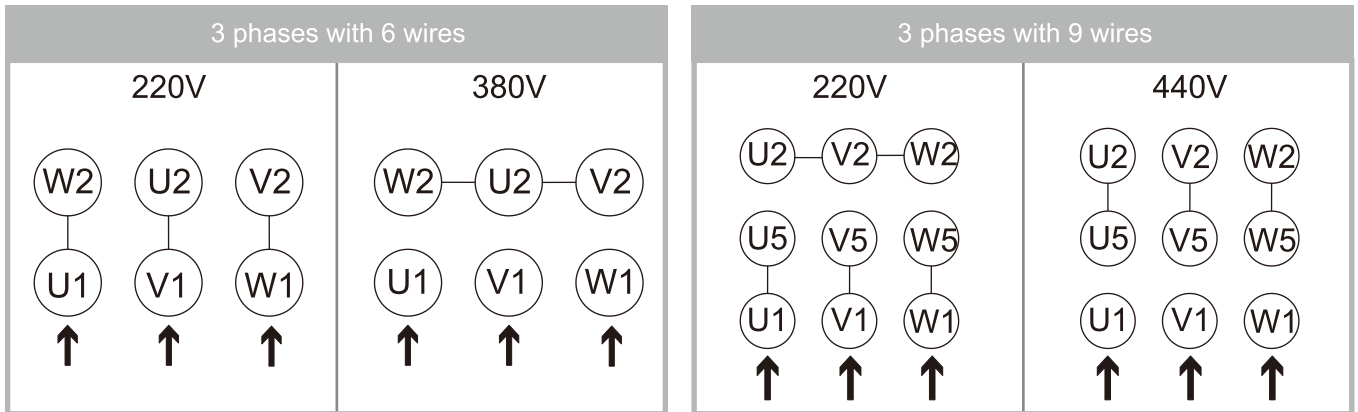
- Do not knock the gear motor by any tool during installation.
- When using our gear motor to work with other machine elements, please confirm whether they meet the specs., regulations or restrictions required by the user.
- Please confirm whether the system, machinery or device currently in use is suitable for our products.
- Customer need to recheck our product is suitable for their current system or machinery usage.
- If customer is neglecting for rechecking, then Sesame is not responsible for any cause there might occur.
- The product must always be switched off before any work is performed on it (assembly, dismantling, maintenance, installation). The product must be disconnected from the electrical system and secured against being switched on again. All rotating parts must have come to a stop.
- Incorrectly performed electrical work can result in fatal injury! This work may only be carried out by a qualified electrician.
- The housing parts can heat up to well above 40°C. There is a danger of burns. After switching off, let the product cool down to ambient temperature.

3. Wiring Diagrams

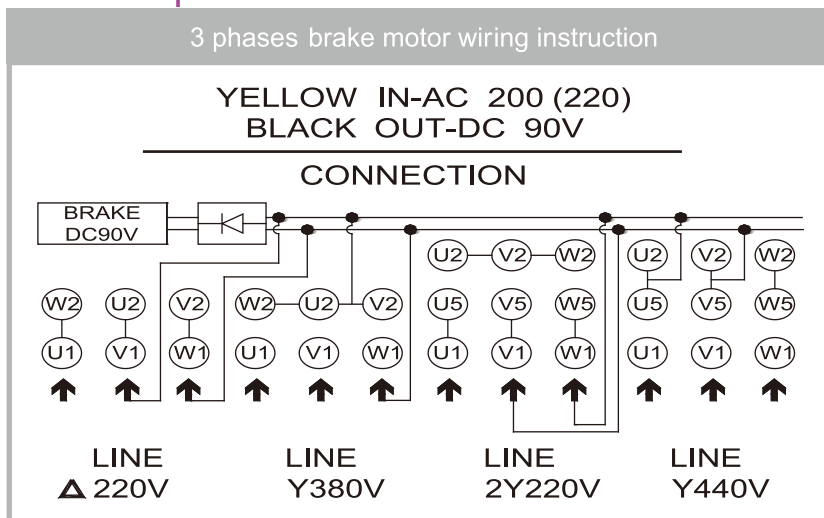
- Visual direction for gear motor running direction is from gear motor's output shaft. Forward direction is clockwise, counterclockwise direction for reversal.

3.1 Three phases motor

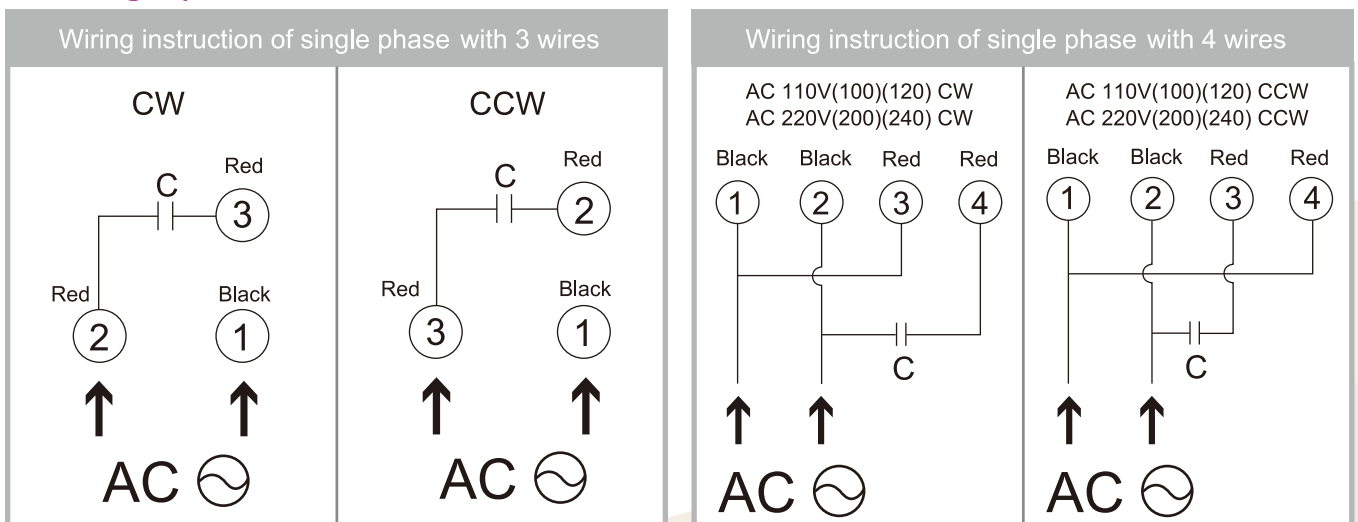
- Please wire the power supply according to the incoming voltage as shown below. Whenever the rotating direction needs to be reversed, switch any two wires of the incoming power cable.
- Please check if the wiring is correct after installation, ensure there is no missing phase, or phase voltage unbalance.



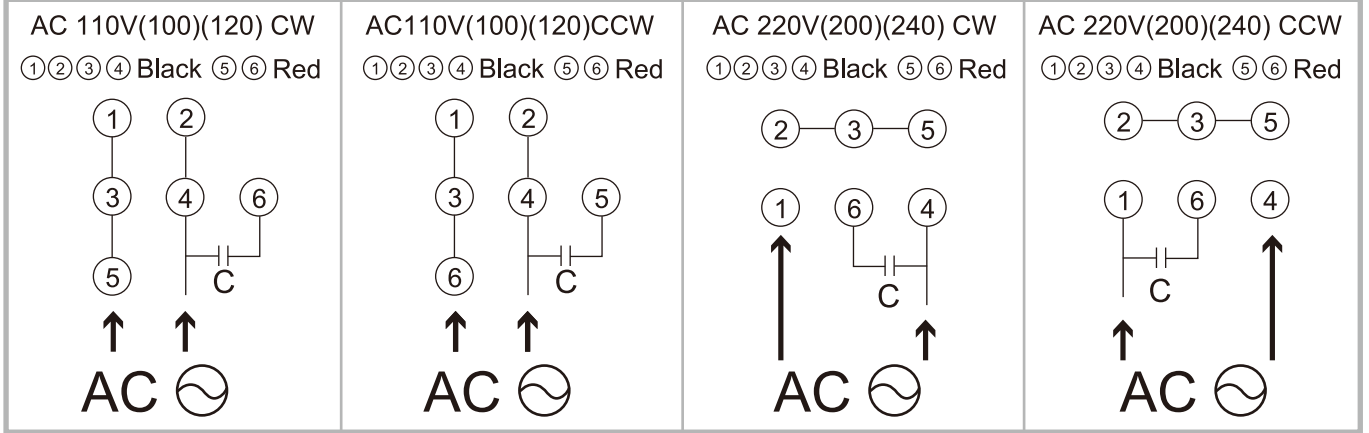
3.2 Three phases motor with brake



3.3 Single phase motor



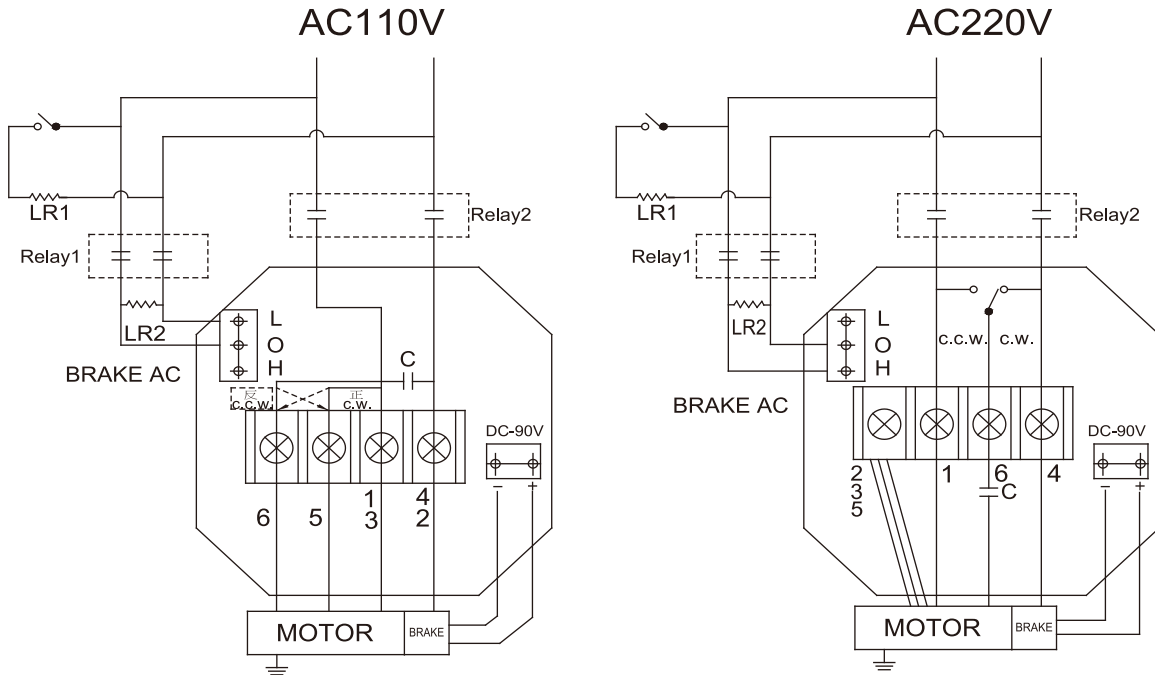
Wiring instruction of single phase with 6 wires



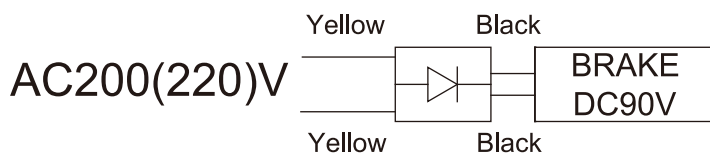
3.4 Single phase motor with brake

Single Phase Brake Motor Wiring Instruction

● Brake control panel wiring diagram without internal relay



● Brake control panel wiring diagram with internal relay



4. Installation of the Capacitor (for single phase motor only)

- Ensure the capacitor matches the specification of the motor before installation.
- Install the capacitor with M5 screws (not included).
- Capacitor should be installed inside the electrical box or IP54 rated box to avoid electric shock.

Attention

- ▶ Install capacitor at least 10 cm away from motor to prevent heat damage to capacitor.

5. Electro Magnetic Brake Operate Precautions

- The Lining clearance will bigger than 0.3~0.35mm after a period of usage, please contact us to replace the lining.
- Isolating wiring is required when frequent braking condition.
- Brake frequency limit 10 times per minute.

6. Thermally Protected Motor Precautions

- Single phase thermally protected motor will restart automatically when motor temperature falls below a certain level. Always turn off the power before conducting checks or performing work on the motor.
- Thermal switch of three phases motor is installed with two red wires. Please connect two red wires to control system. Thermally protected motor will restart automatically when motor temperature falls below a certain level. Always turn off the power before conducting checks or performing work on the motor.

7. Trouble Shooting Guides

Please check the motor according to procedures below, if abnormal situation were found such as:

- The motor does not work or the speed cannot be raised
 - Check if the power supply fits the motor specification?
 - Confirm if the power supply is correctly connected?
 - Confirm if the motor is overloaded?
 - Confirm if the wires are well connected with the terminal block?
 - Confirm if the capacitor is well installed?
- The motor is over heated
 - Check if the power supply fits the motor specification?
 - Check if the temperature of the environment is under 40°C?
 - Confirm if the capacitor specification is correct?
- Noise
 - Check if the motor was blocked?
 - Check if an open-phase occurs?
 - Check if brake well functioning?
 - Check if the fan loosens?
- If the problem could not be solved via the procedures above, please DO NOT take apart of the motor, contact SESAME for technical support right away.

SPECIFICATIONS AND DIMENSIONS, V-CASING TYPE

Terminal box position: at 270° for V-casing type.

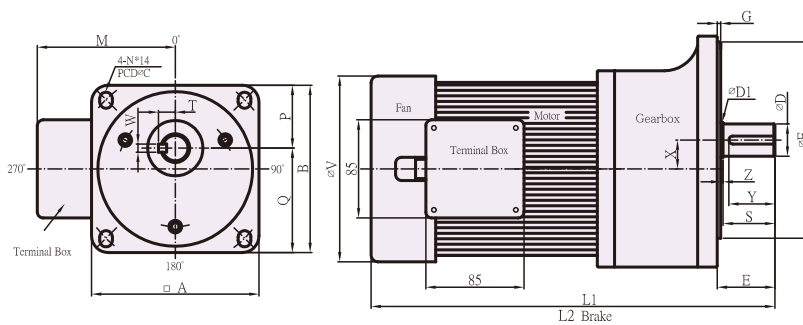


Figure II

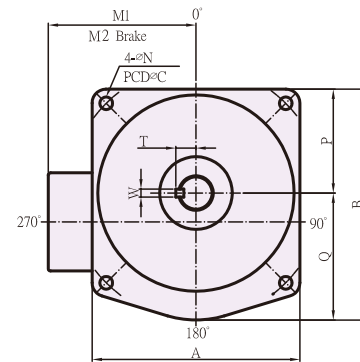


Figure I

DIMENSION (mm)

| MOTOR'S CAPACITY | FIGURE NO. | TYPE NO. | GEAR RATIO | A | B | C | E | F | G | L1 | L2 | M1 | M2 | N | P | Q | V | X | OUTPUT SHAFT | | | | | | | |
|------------------|------------|----------|---------------|-----|-------|-----|------|-----|---|-------|-------|-------|-------|-------|-------|------|-----|----|--------------|----|----|------|----|----|-----|--|
| | | | | | | | | | | | | | | | | | | | D | D1 | S | T | W | Y | Z | |
| 100W 1/8HP x4P | II | 11 | 1/3~1/90 | 122 | 122 | 140 | 42.5 | - | - | 252 | 297 | 111 | 137 | 9x12 | 43 | 79 | 133 | 18 | 18 | 20 | 32 | 11.3 | 5 | 28 | 4 | |
| | II | E11 | 1/3~1/90 | 145 | 145 | 170 | 44.5 | - | - | 255 | 300 | 111 | 137 | 11x14 | 54.5 | 90.5 | 133 | 18 | 22 | 25 | 35 | 14.5 | 7 | 28 | 3 | |
| | I | 12 | 1/75~1/165 | 155 | 167 | 185 | 50.5 | 140 | 3 | 273 | 318 | 111 | 137 | 11 | 77.5 | 89.5 | 133 | 18 | 22 | 25 | 40 | 14.3 | 7 | 35 | 7.5 | |
| 200W 1/4HP x4P | II | E12 | 1/75~1/165 | 145 | 145 | 170 | 50.5 | - | - | 273.5 | 318.5 | 111 | 137 | 11x14 | 54.5 | 90.5 | 133 | 18 | 22 | 25 | 40 | 14.5 | 7 | 35 | 5.5 | |
| | II | 11 | 1/3~1/40 | 122 | 122 | 140 | 42.5 | - | - | 277 | 322 | 111 | 137 | 9x12 | 43 | 79 | 133 | 18 | 18 | 20 | 32 | 11.3 | 5 | 28 | 4 | |
| | II | E11 | (1/50~1/90) | 145 | 145 | 170 | 44.5 | - | - | 280 | 325 | 111 | 137 | 11x14 | 54.5 | 90.5 | 133 | 18 | 22 | 25 | 35 | 14.5 | 7 | 28 | 3 | |
| | I | 12 | 1/20~1/90 | 155 | 167 | 185 | 50.5 | 140 | 3 | 298 | 343 | 111 | 137 | 11 | 77.5 | 89.5 | 133 | 18 | 22 | 25 | 40 | 14.3 | 7 | 35 | 7.5 | |
| | II | E12 | (1/100~1/165) | 145 | 145 | 170 | 50.5 | - | - | 298.5 | 343.5 | 111 | 137 | 11x14 | 54.5 | 90.5 | 133 | 18 | 22 | 25 | 40 | 14.5 | 7 | 35 | 5.5 | |
| 400W 1/2HP x4P | I | 13 | 1/100~1/180 | 180 | 200 | 220 | 50 | 170 | 3 | 322.5 | 367.5 | 111 | 137 | 11 | 90 | 110 | 133 | 25 | 28 | 30 | 45 | 17.3 | 7 | 40 | 2 | |
| | I | 12 | 1/3~1/40 | 155 | 167 | 185 | 50.5 | 140 | 3 | 324 | 358.5 | 118.5 | 144.5 | 11 | 77.5 | 89.5 | 147 | 18 | 22 | 25 | 40 | 14.5 | 7 | 35 | 7.5 | |
| | II | E12 | (1/50~1/90) | 145 | 145 | 170 | 50.5 | - | - | 324.5 | 360 | 118.5 | 144.5 | 11x14 | 54.5 | 90.5 | 147 | 18 | 22 | 25 | 40 | 14.5 | 7 | 35 | 7.5 | |
| | I | 13 | 1/50~1/90 | 180 | 200 | 220 | 50 | 170 | 3 | 348.5 | 383 | 118.5 | 144.5 | 11 | 90 | 110 | 147 | 25 | 28 | 30 | 45 | 17.3 | 7 | 40 | 2 | |
| | I | 13 | (1/100~1/180) | 180 | 200 | 220 | 50 | 170 | 3 | 350 | 384.5 | 118.5 | 144.5 | 11 | 90 | 110 | 147 | 25 | 28 | 30 | 45 | 17.3 | 7 | 40 | 2 | |
| 750W 1HP x4P | I | 14 | 1/100~1/180 | 209 | 230 | 255 | 66 | 185 | 4 | 376 | 410.5 | 118.5 | 144.5 | 13 | 104 | 126 | 147 | 26 | 32 | 35 | 55 | 19.8 | 10 | 50 | 7 | |
| | I | 13 | 1/3~1/30 | 180 | 200 | 220 | 50 | 170 | 3 | 348.5 | 392 | 127 | 153 | 11 | 90 | 110 | 161 | 25 | 28 | 30 | 45 | 17.3 | 7 | 40 | 2 | |
| | I | 13 | (1/40~1/90) | 180 | 200 | 220 | 50 | 170 | 3 | 348.5 | 392 | 127 | 153 | 11 | 90 | 110 | 161 | 25 | 28 | 30 | 45 | 17.3 | 7 | 40 | 2 | |
| | I | 14 | 1/30~1/90 | 209 | 230 | 255 | 66 | 185 | 4 | 376 | 419.5 | 127 | 153 | 13 | 104 | 126 | 161 | 26 | 32 | 35 | 55 | 19.8 | 10 | 50 | 7 | |
| | I | 14 | (1/100~1/180) | 209 | 230 | 255 | 66 | 185 | 4 | 376 | 419.5 | 127 | 153 | 13 | 104 | 126 | 161 | 26 | 32 | 35 | 55 | 19.8 | 10 | 50 | 7 | |
| 1500W 2HP x4P | I | 15 | 1/80~1/200 | 251 | 267.5 | 310 | 71 | 230 | 5 | 408 | 451.5 | 127 | 153 | 15 | 124.5 | 143 | 161 | 28 | 40 | 40 | 71 | 23.8 | 10 | 60 | - | |
| | I | 14 | 1/3~1/60 | 209 | 230 | 255 | 66 | 185 | 4 | 418 | 454.5 | 138.5 | 164.5 | 13 | 104 | 126 | 192 | 26 | 32 | 35 | 55 | 19.8 | 10 | 50 | 7 | |
| | I | 15 | 1/50~1/90 | 251 | 267.5 | 310 | 71 | 230 | 5 | 450 | 486.5 | 138.5 | 164.5 | 15 | 124.5 | 143 | 192 | 28 | 40 | 40 | 71 | 23.8 | 10 | 60 | - | |
| 2200W 3HP x4P | I | 14 | 1/3~1/40 | 209 | 230 | 255 | 66 | 185 | 4 | 448 | 484.5 | 138.5 | 164.5 | 13 | 104 | 126 | 192 | 26 | 32 | 35 | 55 | 19.8 | 10 | 50 | 7 | |
| | I | 15 | 1/3~1/40 | 251 | 267.5 | 310 | 71 | 230 | 5 | 480 | 516.5 | 138.5 | 164.5 | 15 | 124.5 | 143 | 192 | 28 | 40 | 40 | 71 | 23.8 | 10 | 60 | - | |
| | I | 15 | (1/50~1/90) | 251 | 267.5 | 310 | 71 | 230 | 5 | 480 | 516.5 | 138.5 | 164.5 | 15 | 124.5 | 143 | 192 | 28 | 40 | 40 | 71 | 23.8 | 10 | 60 | - | |

※ For light loading type.

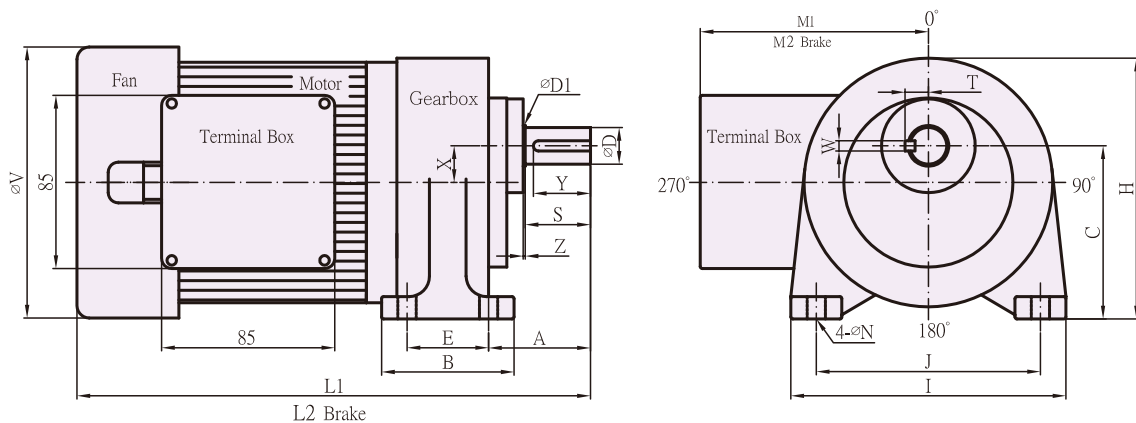
■ Under normal usage, products come with a one-year limited warranty. ■ Specifications subject to change without notice.

YTK CO.,LTD.
Http://www.ytk-group.co.jp

Products due to human error, natural disasters or other factors lead to poor or damaged, will not be covered under warranty.

SPECIFICATIONS AND DIMENSIONS, FOOT-MOUNT TYPE

Terminal box position: at 270° for foot - mount type.



DIMENSION (mm)

| MOTOR'S CAPACITY | TYPE NO. | GEAR RATIO | A | B | C | E | H | I | J | L1 | L2 | M1 | M2 | N | V | X | OUTPUT SHAFT | | | | | | | | | |
|------------------|----------|---------------|----|-----|-----|-----|-------|-----|-----|-------|-------|-------|-------|----|-----|----|--------------|----|----|------|----|----|-----|--|--|--|
| | | | | | | | | | | | | | | | | | D | D1 | S | T | W | Y | Z | | | |
| 100W 1/8HP x4P | 11 | 1/3~1/90 | 50 | 65 | 85 | 40 | 128 | 135 | 110 | 252 | 297 | 111 | 137 | 9 | 133 | 18 | 18 | 20 | 32 | 11.3 | 5 | 28 | 1 | | | |
| | 12 | 1/75~1/165 | 60 | 90 | 94 | 65 | 147.5 | 158 | 130 | 273 | 318 | 111 | 137 | 11 | 133 | 18 | 22 | 25 | 40 | 14.3 | 7 | 35 | 8.5 | | | |
| 200W 1/4HP x4P | 11 | 1/3~1/40 | 50 | 65 | 85 | 40 | 128 | 135 | 110 | 277 | 322 | 111 | 137 | 9 | 133 | 18 | 18 | 20 | 32 | 11.3 | 5 | 28 | 1 | | | |
| | 11 | (1/50~1/90) | 50 | 65 | 85 | 40 | 128 | 135 | 110 | 277 | 322 | 111 | 137 | 9 | 133 | 18 | 18 | 20 | 32 | 11.5 | 5 | 28 | 1 | | | |
| | 12 | 1/20~1/90 | 60 | 90 | 94 | 65 | 147.5 | 158 | 130 | 298 | 343 | 111 | 137 | 11 | 133 | 18 | 22 | 25 | 40 | 14.3 | 7 | 35 | 8.5 | | | |
| | 12 | (1/100~1/165) | 60 | 90 | 94 | 65 | 147.5 | 158 | 130 | 298 | 343 | 111 | 137 | 11 | 133 | 18 | 22 | 25 | 40 | 14.3 | 7 | 35 | 8.5 | | | |
| 400W 1/2HP x4P | 13 | 1/100~1/180 | 68 | 120 | 115 | 90 | 175 | 180 | 140 | 322 | 367 | 111 | 137 | 11 | 133 | 25 | 28 | 30 | 45 | 17.3 | 7 | 40 | 2 | | | |
| | 12 | 1/3~1/40 | 60 | 90 | 94 | 65 | 147.5 | 158 | 130 | 324 | 358.5 | 118.5 | 144.5 | 11 | 147 | 18 | 22 | 25 | 40 | 14.3 | 7 | 35 | 8.5 | | | |
| | 12 | (1/50~1/90) | 60 | 90 | 94 | 65 | 147.5 | 158 | 130 | 324 | 358.5 | 118.5 | 144.5 | 11 | 147 | 18 | 22 | 25 | 40 | 14.5 | 7 | 35 | 8.5 | | | |
| | 13 | 1/50~1/90 | 68 | 120 | 115 | 90 | 175 | 180 | 140 | 348.5 | 383 | 118.5 | 144.5 | 11 | 147 | 25 | 28 | 30 | 45 | 17.3 | 7 | 40 | 2 | | | |
| | 13 | (1/100~1/180) | 68 | 120 | 115 | 90 | 175 | 180 | 140 | 348.5 | 383 | 118.5 | 144.5 | 11 | 147 | 25 | 28 | 30 | 45 | 17.3 | 7 | 40 | 2 | | | |
| 750W 1HP x4P | 14 | 1/100~1/180 | 74 | 165 | 130 | 130 | 204 | 210 | 170 | 376 | 410.5 | 118.5 | 144.5 | 13 | 147 | 26 | 32 | 35 | 55 | 19.8 | 10 | 50 | 7 | | | |
| | 13 | 1/3~1/30 | 68 | 120 | 115 | 90 | 175 | 180 | 140 | 348.5 | 392 | 127 | 153 | 11 | 161 | 25 | 28 | 30 | 45 | 17.3 | 7 | 40 | 2 | | | |
| | 13 | (1/40~1/90) | 68 | 120 | 115 | 90 | 175 | 180 | 140 | 348.5 | 392 | 127 | 153 | 11 | 161 | 25 | 28 | 30 | 45 | 17.3 | 7 | 40 | 2 | | | |
| | 14 | 1/30~1/90 | 74 | 165 | 130 | 130 | 204 | 210 | 170 | 376 | 419.5 | 127 | 153 | 13 | 161 | 26 | 32 | 35 | 55 | 19.8 | 10 | 50 | 7 | | | |
| | 14 | (1/100~1/180) | 74 | 165 | 130 | 130 | 204 | 210 | 170 | 376 | 419.5 | 127 | 153 | 13 | 161 | 26 | 32 | 35 | 55 | 19.8 | 10 | 50 | 7 | | | |
| 1500W 2HP x4P | 15 | 1/80~1/200 | 95 | 195 | 150 | 150 | 237 | 255 | 210 | 412 | 455.5 | 127 | 153 | 15 | 161 | 28 | 40 | - | 69 | 23.8 | 10 | 60 | - | | | |
| | 14 | 1/3~1/60 | 74 | 165 | 130 | 130 | 204 | 210 | 170 | 418 | 454.5 | 138.5 | 164.5 | 13 | 192 | 26 | 32 | 35 | 55 | 19.8 | 10 | 50 | 7 | | | |
| | 15 | 1/50~1/90 | 95 | 195 | 150 | 150 | 237 | 255 | 210 | 454 | 490.5 | 138.5 | 164.5 | 15 | 192 | 28 | 40 | - | 69 | 23.8 | 10 | 60 | - | | | |
| 2200W 3HP x4P | 14 | 1/3~1/40 | 74 | 165 | 130 | 130 | 204 | 210 | 170 | 448 | 484.5 | 138.5 | 164.5 | 13 | 192 | 26 | 32 | 35 | 55 | 19.8 | 10 | 50 | 7 | | | |
| | 15 | 1/3~1/40 | 95 | 195 | 150 | 150 | 237 | 255 | 210 | 484 | 520.5 | 138.5 | 164.5 | 15 | 192 | 28 | 40 | - | 69 | 23.8 | 10 | 60 | - | | | |
| | 15 | (1/50~1/90) | 95 | 195 | 150 | 150 | 237 | 255 | 210 | 484 | 520.5 | 138.5 | 164.5 | 15 | 192 | 28 | 40 | - | 69 | 23.8 | 10 | 60 | - | | | |

※ For light loading type.

■ Under normal usage, products come with a one-year limited warranty. ■ Specifications subject to change without notice.

YTK CO.,LTD.
Http://www.ytk-group.co.jp

G12T

V-CASING TYPE PRECISION GEAR MOTOR FOR ATC

Terminal box position: at 270° for V-casing type.

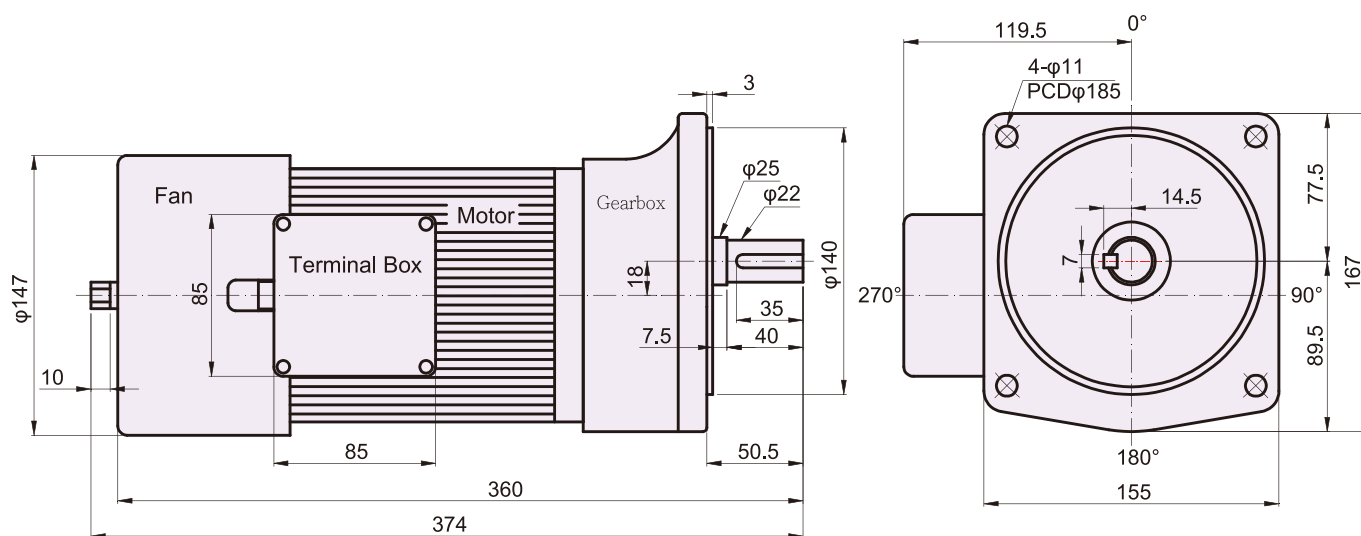


G12V560S-MH10T on ATC.



PRECISION GEAR MOTOR

V-CASING TYPE PRECISION GEAR MOTOR FOR ATC



◎ FEATURES

| MODEL | OUTPUT (W) | VOLTAGE (V) | CURRENT (A) | SPEED (RPM) | GEAR RATIO | OUTPUT TORQUE (N-m) | OUTPUT SPEED (RPM) | BRAKE VOLTAGE (V) | STOP TIME (ms) | OVER RUN DEGREE |
|--------------|------------|-------------------|-------------|-------------|------------|---------------------|--------------------|-------------------|----------------|-----------------|
| G12T400S M10 | 400 | 3 Phase 220(50HZ) | 2.84 | 1350 | 10 | 28.9 | 135 | 90~99 | <90ms | <70° |
| | | 3 Phase 380(50HZ) | 1.58 | 1350 | | 28.7 | 135 | | | |
| | | 3 Phase 220(60HZ) | 2.89 | 1600 | | 24.6 | 160 | | <75ms | |
| | | 3 Phase 380(60HZ) | 1.64 | 1600 | | 24.1 | 165 | | | |
| G12T560S M10 | 560 | 3 Phase 220(50HZ) | 3.54 | 1300 | 10 | 41.8 | 130 | 90~99 | <90ms | <70° |
| | | 3 Phase 380(50HZ) | 2.04 | 1300 | | 41.7 | 130 | | | |
| | | 3 Phase 220(60HZ) | 3.43 | 1550 | | 34.5 | 155 | | <80ms | |
| | | 3 Phase 380(60HZ) | 1.95 | 1550 | | 35.1 | 155 | | | |

Note:

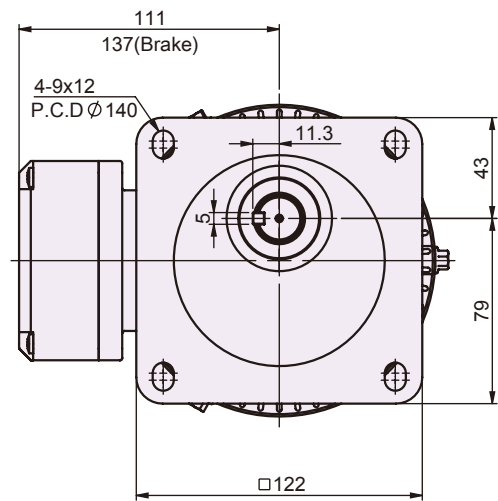
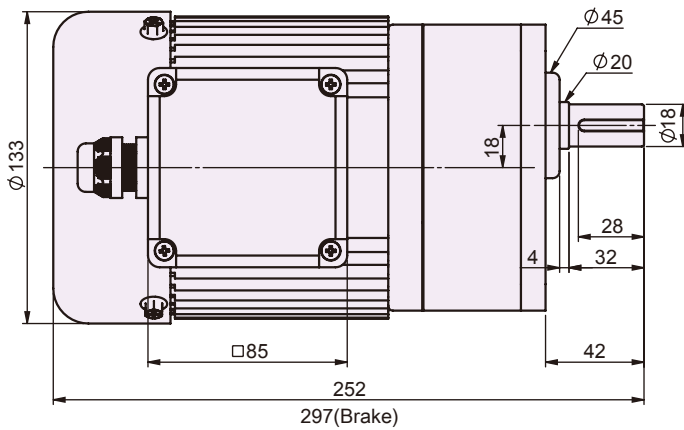
- 1.Stop Time: As voltage brake release its voltage, the motor will gradually slow down to complete stop. The time frame required the motor to completely stop will depend on motor's loading.
- 2.Over run degree: As voltage brake release its voltage, the motor will gradually slow down to complete stop. The operation of the output shaft angle might be off from its original setting, as it is depend on motor's loading.

YTK CO.,LTD.
[Http://www.ytk-group.co.jp](http://www.ytk-group.co.jp)

G11V-100W

SINGLE/3-PHASE V-CASING TYPE PRECISION GEAR MOTOR

Terminal box position: at 270° for V-casing type.



| KW | Full Load Current (Amp) | | | | | | Full Load Running (rpm) | |
|------|-------------------------|------|------|------|---------|------|-------------------------|------|
| | 3 Phase | | | | 1 Phase | | | |
| | 220V | | 380V | | 110V | 220V | 50HZ | 60HZ |
| | 50HZ | 60HZ | 50HZ | 60HZ | 60HZ | 60HZ | | |
| 100W | 0.66 | 0.58 | 0.35 | 0.32 | 1.41 | 0.79 | 1400 | 1700 |

⊙ GEAR MOTOR SPECIFICATION

| Gear Ratio | 3 | | 5 | | 10 | | 15 | | 20 | | 25 | | 30 | | 40 | | 50 | | 60 | | 75 | | 90 | |
|----------------------------------|------|------|------|------|------|------|------|------|------|------|------|------|------|------|------|------|------|------|------|------|------|------|------|------|
| | 50HZ | 60HZ | 50HZ | 60HZ | 50HZ | 60HZ | 50HZ | 60HZ | 50HZ | 60HZ | 50HZ | 60HZ | 50HZ | 60HZ | 50HZ | 60HZ | 50HZ | 60HZ | 50HZ | 60HZ | 50HZ | 60HZ | 50HZ | 60HZ |
| Output rpm | 500 | 600 | 300 | 360 | 150 | 180 | 100 | 120 | 75 | 90 | 60 | 72 | 50 | 60 | 37.5 | 45 | 30 | 36 | 25 | 30 | 20 | 24 | 16 | 20 |
| Output Torque (Kg.m) | 0.18 | 0.15 | 0.3 | 0.26 | 0.6 | 0.51 | 0.89 | 0.76 | 1.2 | 1.02 | 1.31 | 1.12 | 1.58 | 1.35 | 2.02 | 1.8 | 2.62 | 2.25 | 3.15 | 2.7 | 3.94 | 3.6 | 4.73 | 4.59 |
| Permissible Overhung Load* (Kgf) | 70 | 60 | 80 | 70 | 100 | 90 | 110 | 110 | 130 | 120 | 140 | 130 | 140 | 140 | 160 | 150 | 170 | 160 | 170 | 170 | 170 | 170 | 170 | 170 |

* Applied to the output shaft center.

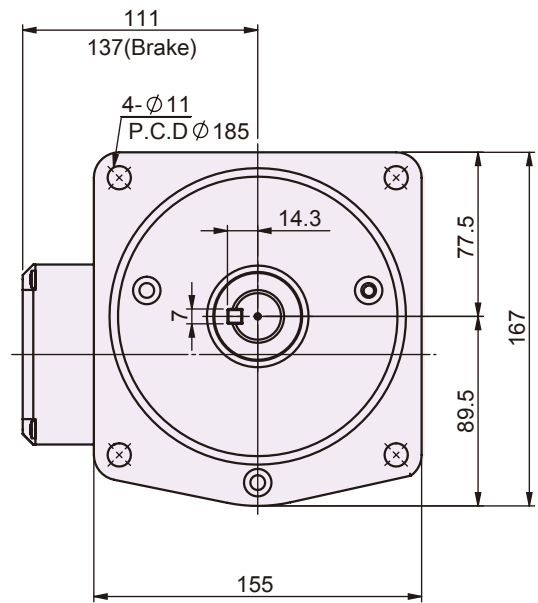
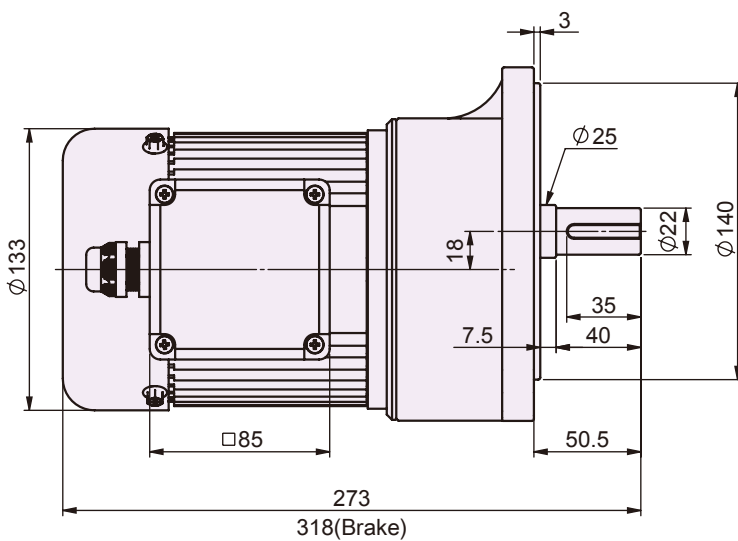
Products due to human error, natural disasters or other factors lead to poor or damaged, will not be covered under warranty.

YTK CO.,LTD.
Http://www.ytk-group.co.jp

G12V-100W

SINGLE/3-PHASE V-CASING TYPE PRECISION GEAR MOTOR

Terminal box position: at 270° for V-casing type.



| KW | Full Load Current (Amp) | | | | | | Full Load Running (rpm) | |
|------|-------------------------|------|------|------|---------|------|-------------------------|------|
| | 3 Phase | | | | 1 Phase | | | |
| | 220V | | 380V | | 110V | 220V | 50HZ | 60HZ |
| | 50HZ | 60HZ | 50HZ | 60HZ | 60HZ | 60HZ | | |
| 100W | 0.66 | 0.58 | 0.35 | 0.32 | 1.41 | 0.79 | 1400 | 1700 |

◎ GEAR MOTOR SPECIFICATION

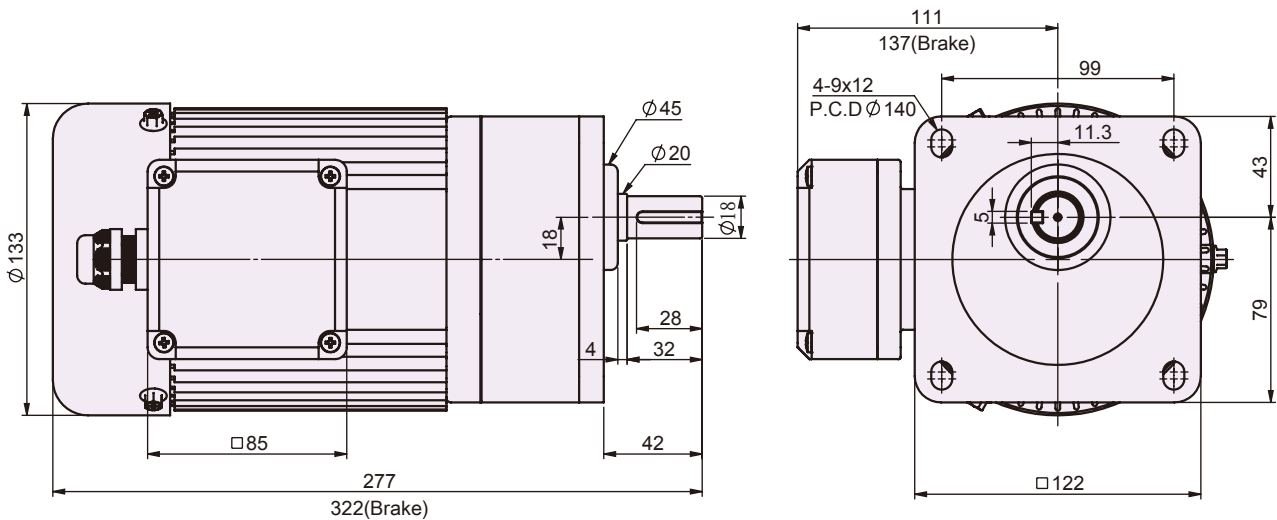
| Gear Ratio | 75 | | 90 | | 100 | | 120 | | 150 | | 165 | |
|----------------------------------|------|------|------|------|------|------|------|------|------|------|------|------|
| | 50HZ | 60HZ | 50HZ | 60HZ | 50HZ | 60HZ | 50HZ | 60HZ | 50HZ | 60HZ | 50HZ | 60HZ |
| Output rpm | 20 | 24 | 16 | 20 | 15 | 18 | 12.5 | 15 | 10 | 12 | 9 | 11 |
| Output Torque (Kg.m) | 3.94 | 3.6 | 4.73 | 4.59 | 5.25 | 5.10 | 6.30 | 6.12 | 7.88 | 7.65 | 9.96 | 8.30 |
| Permissible Overhung Load* (Kgf) | 240 | 240 | 240 | 240 | 240 | 240 | 240 | 240 | 240 | 240 | 240 | 240 |

* Applied to the output shaft center.

G11V-200W

SINGLE/3-PHASE V-CASING TYPE PRECISION GEAR MOTOR

Terminal box position: at 270° for V-casing type.



| KW | Full Load Current (Amp) | | | | | | | | | | | | | | Full Load Running (rpm) | | | | | | | | | | | |
|----------------------------------|-------------------------|------|------|------|------|------|------|---------|------|------|------|------|------|------|-------------------------|------|------|------|------|------|------|------|------|------|------|------|
| | 3 Phase | | | | | | | 1 Phase | | | | | | | | | | | | | | | | | | |
| | 220V | | 380V | | 110V | | 220V | | 50HZ | 60HZ | 50HZ | 60HZ | 50HZ | 60HZ | | | | | | | | | | | | |
| | 50HZ | 60HZ | 50HZ | 60HZ | 60HZ | 60HZ | 50HZ | 60HZ | | | | | | | | | | | | | | | | | | |
| 200W | 1.28 | 1.29 | 0.72 | 0.66 | 2.59 | | 1.42 | | 1400 | 1700 | | | | | | | | | | | | | | | | |
| ⊙ GEAR MOTOR SPECIFICATION | | | | | | | | | | | | | | | | | | | | | | | | | | |
| Gear Ratio | 3 | | 5 | | 7.5 | | 10 | | 15 | | 20 | | 25 | | 30 | | 40 | | 50 | | 60 | | 75 | | 90 | |
| | 50HZ | 60HZ | 50HZ | 60HZ | 50HZ | 60HZ | 50HZ | 60HZ | 50HZ | 60HZ | 50HZ | 60HZ | 50HZ | 60HZ | 50HZ | 60HZ | 50HZ | 60HZ | 50HZ | 60HZ | 50HZ | 60HZ | 50HZ | 60HZ | 50HZ | 60HZ |
| Output rpm | 500 | 600 | 300 | 360 | 200 | 240 | 150 | 180 | 100 | 120 | 75 | 90 | 60 | 72 | 50 | 60 | 37.5 | 45 | 30 | 36 | 25 | 30 | 20 | 24 | 16 | 20 |
| Output Torque (Kg.m) | 0.36 | 0.31 | 0.60 | 0.52 | 0.90 | 0.75 | 1.19 | 1.02 | 1.79 | 1.53 | 2.10 | 1.80 | 2.63 | 2.25 | 3.15 | 2.7 | 4.2 | 3.6 | 5.25 | 4.5 | 6.3 | 5.4 | 7.88 | 6.75 | 9.45 | 8.1 |
| Permissible Overhung Load* (Kgf) | 70 | 60 | 80 | 70 | 90 | 90 | 100 | 90 | 110 | 110 | 130 | 120 | 140 | 130 | 140 | 140 | 160 | 150 | 170 | 160 | 170 | 170 | 170 | 170 | 170 | 170 |

* Applied to the output shaft center.

* () For light loading type.

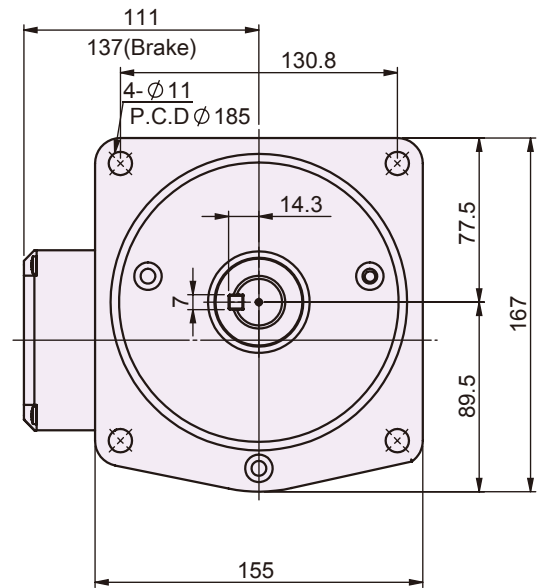
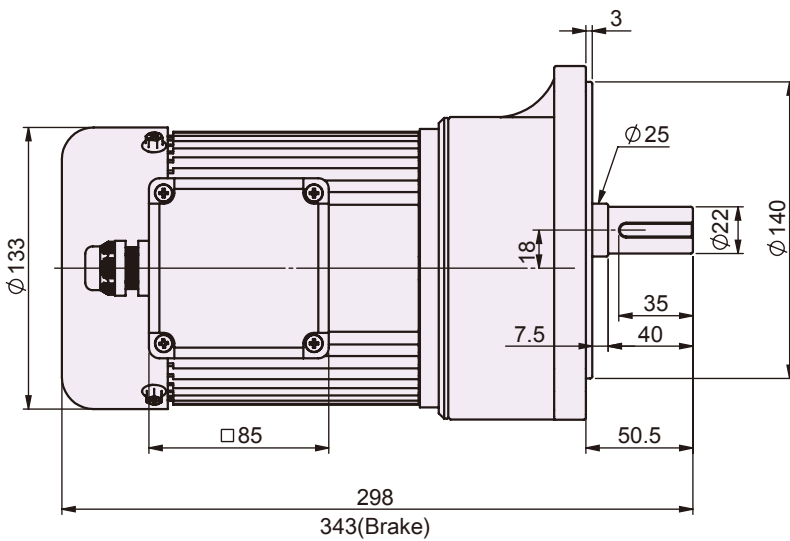
Products due to human error, natural disasters or other factors lead to poor or damaged, will not be covered under warranty.

YTK CO.,LTD.
Http://www.ytk-group.co.jp

G12V-200W

SINGLE/3-PHASE V-CASING TYPE PRECISION GEAR MOTOR

Terminal box position: at 270° for V-casing type.



| KW | Full Load Current (Amp) | | | | | | Full Load Running (rpm) | |
|------|-------------------------|------|------|------|---------|------|-------------------------|------|
| | 3 Phase | | | | 1 Phase | | | |
| | 220V | | 380V | | 110V | 220V | 50HZ | 60HZ |
| | 50HZ | 60HZ | 50HZ | 60HZ | 60HZ | 60HZ | | |
| 200W | 1.28 | 1.29 | 0.72 | 0.66 | 2.59 | 1.42 | 1400 | 1700 |

GEAR MOTOR SPECIFICATION

| Gear Ratio | 20 | | 30 | | 40 | | 50 | | 60 | | 75 | | 80 | | 90 | | 100 | | 120 | | 150 | | 165 | |
|----------------------------------|------|------|------|------|------|------|------|------|------|------|------|------|------|------|------|------|-------|------|------|------|-------|------|-------|------|
| | 50HZ | 60HZ | 50HZ | 60HZ | 50HZ | 60HZ | 50HZ | 60HZ | 50HZ | 60HZ | 50HZ | 60HZ | 50HZ | 60HZ | 50HZ | 60HZ | 50HZ | 60HZ | 50HZ | 60HZ | 50HZ | 60HZ | 50HZ | 60HZ |
| Output rpm | 75 | 90 | 50 | 60 | 37.5 | 45 | 30 | 36 | 25 | 30 | 20 | 24 | 19 | 22.5 | 16 | 20 | 15 | 18 | 12.5 | 15 | 10 | 12 | 9 | 11 |
| Output Torque (Kg.m) | 2.10 | 1.80 | 3.15 | 2.70 | 4.20 | 3.60 | 5.25 | 4.50 | 6.30 | 5.40 | 7.88 | 6.75 | 9.65 | 8.04 | 9.45 | 8.10 | 10.59 | 9 | 12.6 | 10.8 | 15.75 | 13.5 | 19.92 | 16.6 |
| Permissible Overhung Load* (Kgf) | 180 | 170 | 200 | 190 | 220 | 210 | 240 | 230 | 240 | 240 | 240 | 240 | 240 | 240 | 240 | 240 | 240 | 240 | 240 | 240 | 240 | 240 | 240 | 240 |

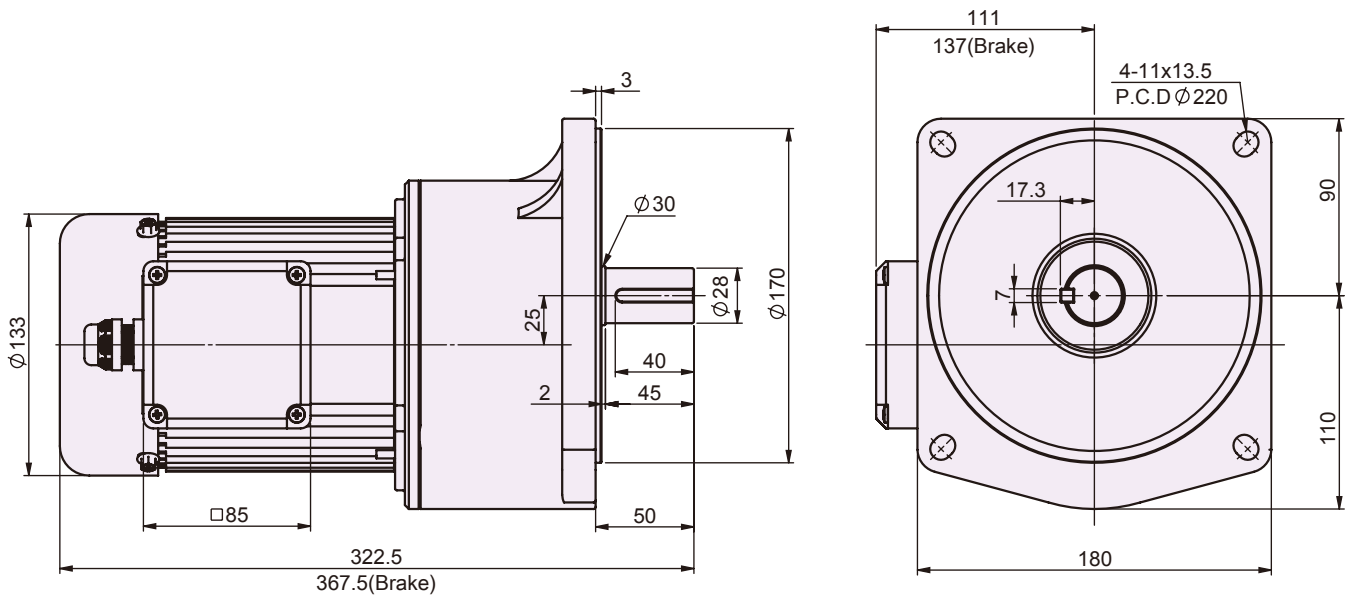
* Applied to the output shaft center.
* (■) For light loading type.

100W V-Casing Types
200W V-Casing Types
400W V-Casing Types
750W V-Casing Types
1500W V-Casing Types
2200W V-Casing Types
100W Foot-Mount Types
200W Foot-Mount Types
400W Foot-Mount Types
750W Foot-Mount Types
1500W Foot-Mount Types
2200W Foot-Mount Types

G13V-200W

SINGLE/3-PHASE V-CASING TYPE PRECISION GEAR MOTOR

Terminal box position: at 270° for V-casing type.



| KW | Full Load Current (Amp) | | | | | | | | Full Load Running (rpm) | |
|----------------------------------|-------------------------|------|------|------|---------|------|-------|------|-------------------------|-------|
| | 3 Phase | | | | 1 Phase | | | | | |
| | 220V | | 380V | | 110V | 220V | | | | |
| | 50HZ | 60HZ | 50HZ | 60HZ | 60HZ | 60HZ | 50HZ | 60HZ | | |
| 200W | 1.28 | 1.29 | 0.72 | 0.66 | 2.59 | 1.42 | 1400 | 1700 | | |
| ◎ GEAR MOTOR SPECIFICATION | | | | | | | | | | |
| Gear Ratio | 100 | | 120 | | 150 | | 165 | | 180 | |
| | 50HZ | 60HZ | 50HZ | 60HZ | 50HZ | 60HZ | 50HZ | 60HZ | 50HZ | 60HZ |
| Output rpm | 15 | 18 | 12.5 | 15 | 10 | 12 | 9 | 11 | 8 | 10 |
| Output Torque (Kg.m) | 10.59 | 9 | 12.6 | 10.8 | 15.75 | 13.5 | 19.92 | 16.6 | 21.73 | 18.11 |
| Permissible Overhung Load* (Kgf) | 400 | 400 | 400 | 400 | 400 | 400 | 400 | 400 | 400 | 400 |

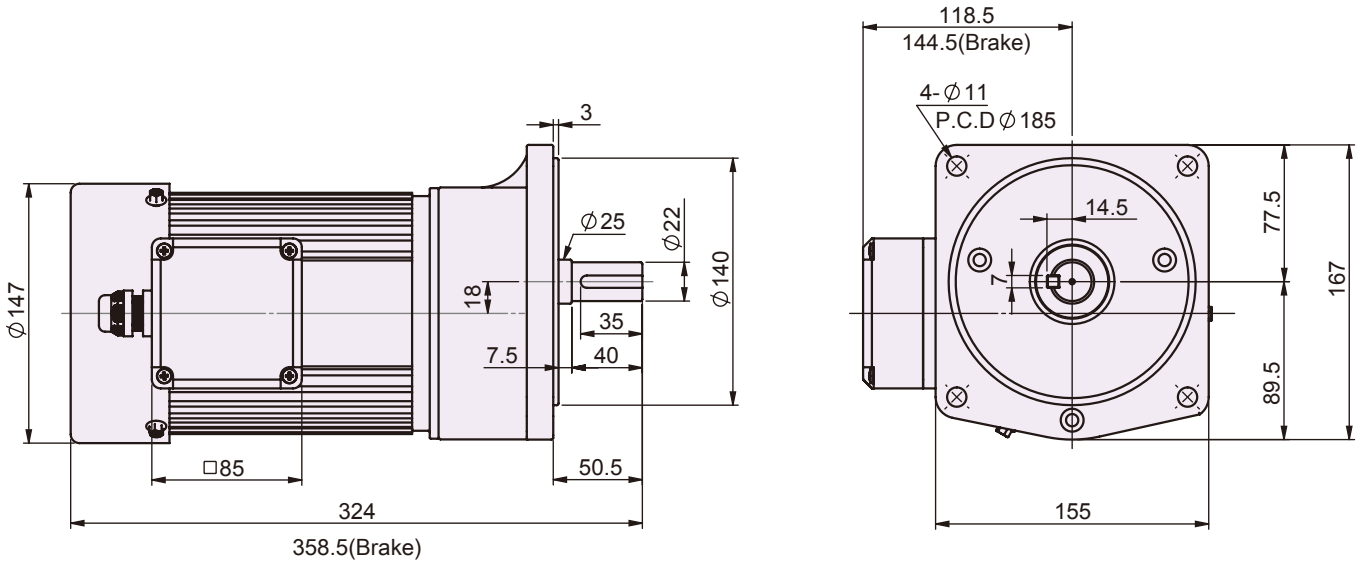
* Applied to the output shaft center.

Products due to human error, natural disasters or other factors lead to poor or damaged, will not be covered under warranty.

YTK CO.,LTD.
[Http://www.ytk-group.co.jp](http://www.ytk-group.co.jp)

G12V-400W SINGLE/3-PHASE V-CASING TYPE PRECISION GEAR MOTOR

Terminal box position: at 270° for V-casing type.



| KW | Full Load Current (Amp) | | | | | | Full Load Running (rpm) | |
|------|-------------------------|------|------|------|---------|------|-------------------------|------|
| | 3 Phase | | | | 1 Phase | | | |
| | 220V | | 380V | | 110V | 220V | 50HZ | 60HZ |
| | 50HZ | 60HZ | 50HZ | 60HZ | 60HZ | 60HZ | | |
| 400W | 2.28 | 1.87 | 1.32 | 1.09 | 5.36 | 2.79 | 1400 | 1700 |

GEAR MOTOR SPECIFICATION

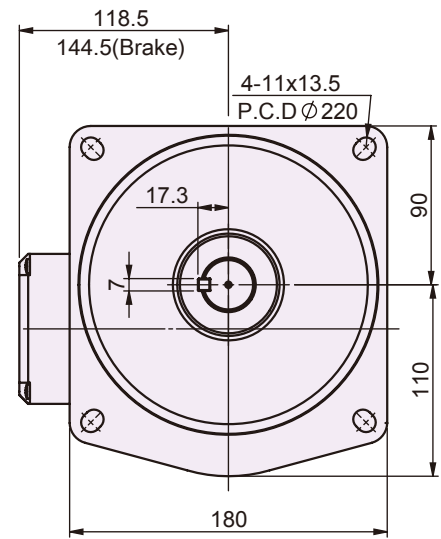
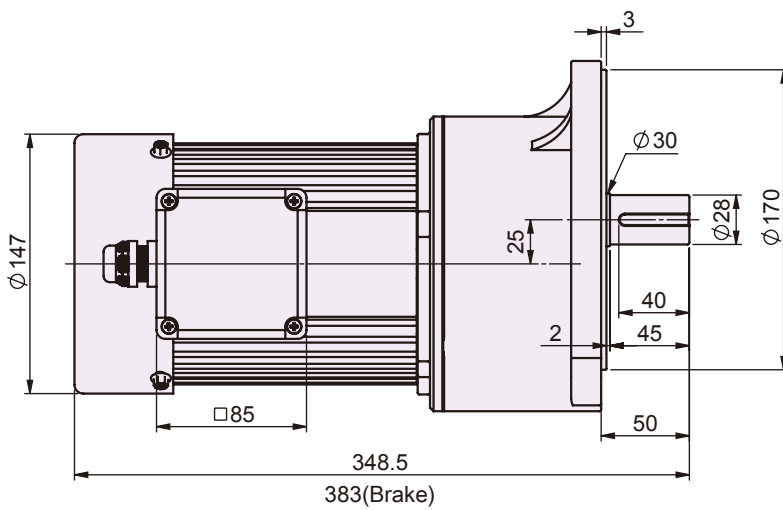
| Gear Ratio | 3 | | 5 | | 7.5 | | 10 | | 15 | | 20 | | 25 | | 30 | | 40 | | 50 | | 60 | | 75 | | 90 | | |
|----------------------------------|------|------|------|------|------|------|------|------|------|------|------|------|------|------|------|------|------|------|-------|------|-------|-------|-------|-------|-------|-------|-----|
| | 50HZ | 60HZ | 50HZ | 60HZ | 50HZ | 60HZ | 50HZ | 60HZ | 50HZ | 60HZ | 50HZ | 60HZ | 50HZ | 60HZ | 50HZ | 60HZ | 50HZ | 60HZ | 50HZ | 60HZ | 50HZ | 60HZ | 50HZ | 60HZ | 50HZ | 60HZ | |
| Output rpm | 500 | 600 | 300 | 360 | 200 | 240 | 150 | 180 | 100 | 120 | 75 | 90 | 60 | 72 | 50 | 60 | 37.5 | 45 | 30 | 36 | 25 | 30 | 20 | 24 | 16 | 20 | |
| Output Torque (Kg.m) | 0.74 | 0.62 | 1.24 | 1.04 | 1.86 | 1.55 | 2.48 | 2.07 | 3.71 | 3.11 | 4.40 | 3.68 | 5.50 | 4.60 | 6.60 | 5.52 | 8.80 | 7.36 | 11.00 | 9.20 | 13.20 | 11.04 | 16.50 | 13.80 | 19.80 | 16.56 | |
| Permissible Overhung Load* (Kgf) | 90 | 90 | 110 | 100 | 130 | 120 | 140 | 130 | 160 | 150 | 180 | 170 | 190 | 180 | 200 | 190 | 220 | 210 | 240 | 230 | 240 | 240 | 240 | 240 | 240 | 240 | 240 |

* Applied to the output shaft center.
* () For light loading type.

G13V-400W

SINGLE/3-PHASE V-CASING TYPE PRECISION GEAR MOTOR

Terminal box position: at 270° for V-casing type.



| KW | Full Load Current (Amp) | | | | | | | Full Load Running (rpm) | |
|------|-------------------------|------|------|------|---------|------|------|-------------------------|------|
| | 3 Phase | | | | 1 Phase | | | | |
| | 220V | | 380V | | 110V | 220V | | 50HZ | 60HZ |
| | 50HZ | 60HZ | 50HZ | 60HZ | 60HZ | 60HZ | | | |
| 400W | 2.28 | 1.87 | 1.32 | 1.09 | 5.36 | 2.79 | 1400 | 1700 | |

◎ GEAR MOTOR SPECIFICATION

| Gear Ratio | 50 | | 60 | | 75 | | 90 | | 100 | | 120 | | 150 | | 165 | | 180 | |
|----------------------------------|-------|------|-------|-------|-------|-------|-------|-------|-------|-------|-------|-------|-------|-------|------|-------|-------|-------|
| | 50HZ | 60HZ | 50HZ | 60HZ | 50HZ | 60HZ | 50HZ | 60HZ | 50HZ | 60HZ | 50HZ | 60HZ | 50HZ | 60HZ | 50HZ | 60HZ | 50HZ | 60HZ |
| Output rpm | 30 | 36 | 25 | 30 | 20 | 24 | 16 | 20 | 15 | 18 | 12.5 | 15 | 10 | 12 | 9 | 11 | 8 | 10 |
| Output Torque (Kg.m) | 11.00 | 9.20 | 13.20 | 11.04 | 16.50 | 13.80 | 19.80 | 16.56 | 22.00 | 18.40 | 26.40 | 22.08 | 33.00 | 27.60 | 36.3 | 30.36 | 39.60 | 33.12 |
| Permissible Overhung Load* (Kgf) | 400 | 380 | 400 | 400 | 400 | 400 | 400 | 400 | 400 | 400 | 400 | 400 | 400 | 400 | 400 | 400 | 400 | 400 |

* Applied to the output shaft center.

* () For light loading type.

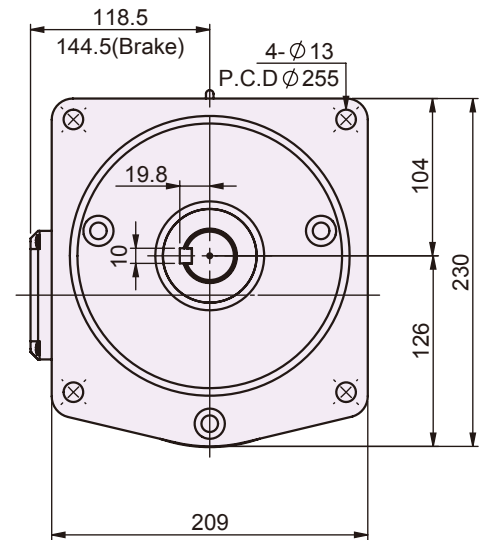
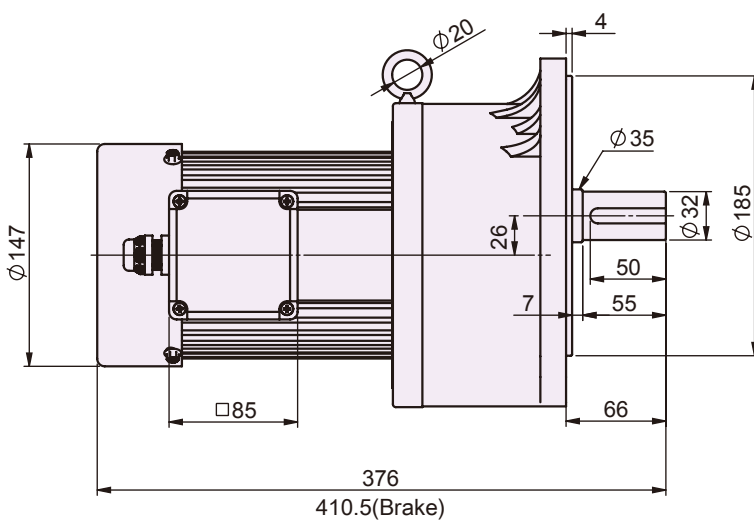
Products due to human error, natural disasters or other factors lead to poor or damaged, will not be covered under warranty.

YTK CO.,LTD.
Http://www.ytk-group.co.jp

G14V-400W

SINGLE/3-PHASE V-CASING TYPE PRECISION GEAR MOTOR

Terminal box position: at 270° for V-casing type.



| KW | Full Load Current (Amp) | | | | | | Full Load Running (rpm) | | | |
|----------------------------------|-------------------------|-------|------|-------|---------|-------|-------------------------|-------|-------|-------|
| | 3 Phase | | | | 1 Phase | | | | | |
| | 220V | | 380V | | 110V | 220V | 50HZ | 60HZ | | |
| | 50HZ | 60HZ | 50HZ | 60HZ | 60HZ | 60HZ | | | | |
| 400W | 2.28 | 1.87 | 1.32 | 1.09 | 5.36 | 2.79 | 1400 | 1700 | | |
| ◎ GEAR MOTOR SPECIFICATION | | | | | | | | | | |
| Gear Ratio | 100 | | 120 | | 150 | | 165 | | 180 | |
| | 50HZ | 60HZ | 50HZ | 60HZ | 50HZ | 60HZ | 50HZ | 60HZ | 50HZ | 60HZ |
| Output rpm | 15 | 18 | 12.5 | 15 | 10 | 12 | 9 | 11 | 8 | 10 |
| Output Torque (Kg.m) | 22.00 | 18.40 | 26.4 | 22.08 | 33.00 | 27.60 | 36.3 | 30.36 | 39.60 | 33.12 |
| Permissible Overhung Load* (Kgf) | 470 | 470 | 470 | 470 | 470 | 470 | 470 | 470 | 470 | 470 |

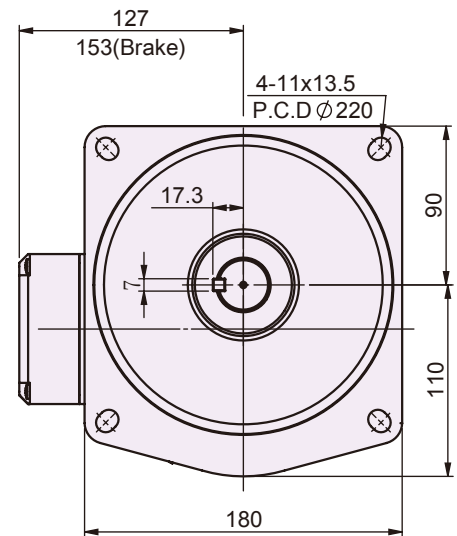
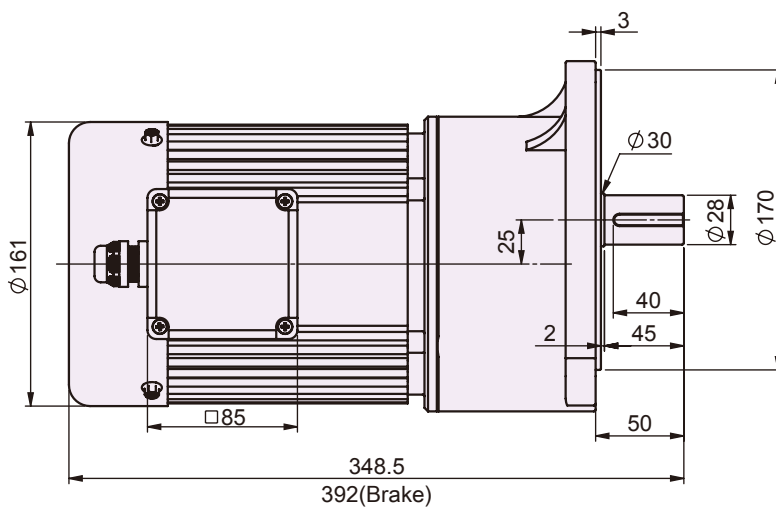
* Applied to the output shaft center.

YTK CO.,LTD.
[Http://www.ytk-group.co.jp](http://www.ytk-group.co.jp)

G13V-750W

SINGLE/3-PHASE V-CASING TYPE PRECISION GEAR MOTOR

Terminal box position: at 270° for V-casing type.



| KW | Full Load Current (Amp) | | | | | | | | Full Load Running (rpm) | |
|------|-------------------------|------|------|------|---------|--|------|--|-------------------------|------|
| | 3 Phase | | | | 1 Phase | | | | | |
| | 220V | | 380V | | 110V | | 220V | | | |
| | 50HZ | 60HZ | 50HZ | 60HZ | 60HZ | | 60HZ | | | |
| 750W | 3.2 | 2.98 | 1.9 | 1.71 | 10.35 | | 5.18 | | 1400 | 1700 |

◎ GEAR MOTOR SPECIFICATION

| Gear Ratio | 3 | | 5 | | 10 | | 15 | | 20 | | 25 | | 30 | | 40 | | 50 | | 60 | | 75 | | 90 | |
|----------------------------------|------|------|------|------|------|------|------|------|------|------|-------|------|-------|-------|-------|-------|-------|-------|-------|-------|-------|-------|-------|-------|
| | 50HZ | 60HZ | 50HZ | 60HZ | 50HZ | 60HZ | 50HZ | 60HZ | 50HZ | 60HZ | 50HZ | 60HZ | 50HZ | 60HZ | 50HZ | 60HZ | 50HZ | 60HZ | 50HZ | 60HZ | 50HZ | 60HZ | 50HZ | 60HZ |
| Output rpm | 500 | 600 | 300 | 360 | 150 | 180 | 100 | 120 | 75 | 90 | 60 | 72 | 50 | 60 | 37.5 | 45 | 30 | 36 | 25 | 30 | 20 | 24 | 16 | 20 |
| Output Torque (Kg.m) | 1.40 | 1.19 | 2.34 | 1.98 | 4.68 | 3.96 | 7.02 | 5.94 | 8.32 | 7.04 | 10.40 | 8.80 | 12.48 | 10.56 | 16.64 | 14.08 | 20.80 | 17.60 | 24.96 | 21.12 | 31.20 | 26.40 | 37.44 | 31.68 |
| Permissible Overhung Load* (Kgf) | 160 | 150 | 190 | 180 | 240 | 220 | 270 | 250 | 300 | 280 | 320 | 300 | 340 | 320 | 370 | 350 | 400 | 380 | 400 | 400 | 400 | 400 | 400 | 400 |

* Applied to the output shaft center.

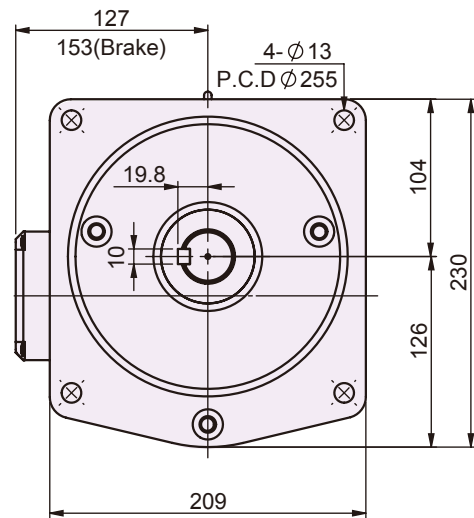
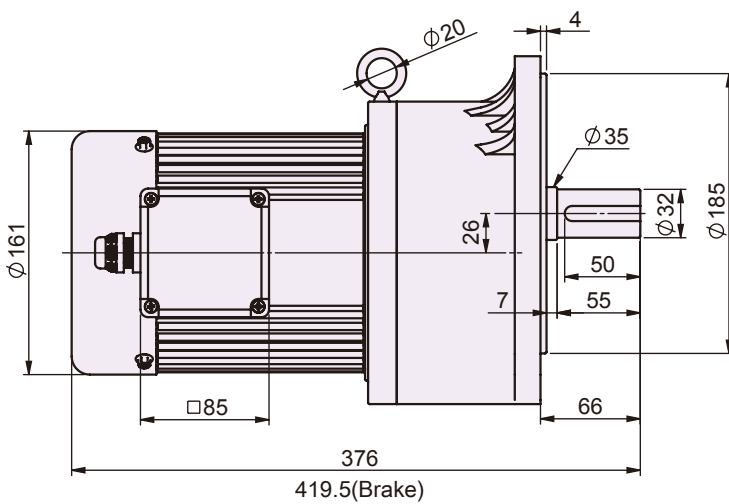
* (■) For light loading type.

Products due to human error, natural disasters or other factors lead to poor or damaged, will not be covered under warranty.

YTK CO.,LTD.
Http://www.ytk-group.co.jp

G14V-750W SINGLE/3-PHASE V-CASING TYPE PRECISION GEAR MOTOR

Terminal box position: at 270° for V-casing type.



| KW | Full Load Current (Amp) | | | | | | | Full Load Running (rpm) | |
|------|-------------------------|------|------|------|---------|------|------|-------------------------|------|
| | 3 Phase | | | | 1 Phase | | | | |
| | 220V | | 380V | | 110V | 220V | | | |
| | 50HZ | 60HZ | 50HZ | 60HZ | 60HZ | 60HZ | 50HZ | 60HZ | |
| 750W | 3.2 | 2.98 | 1.9 | 1.71 | 10.35 | 5.18 | | 1400 | 1700 |

GEAR MOTOR SPECIFICATION

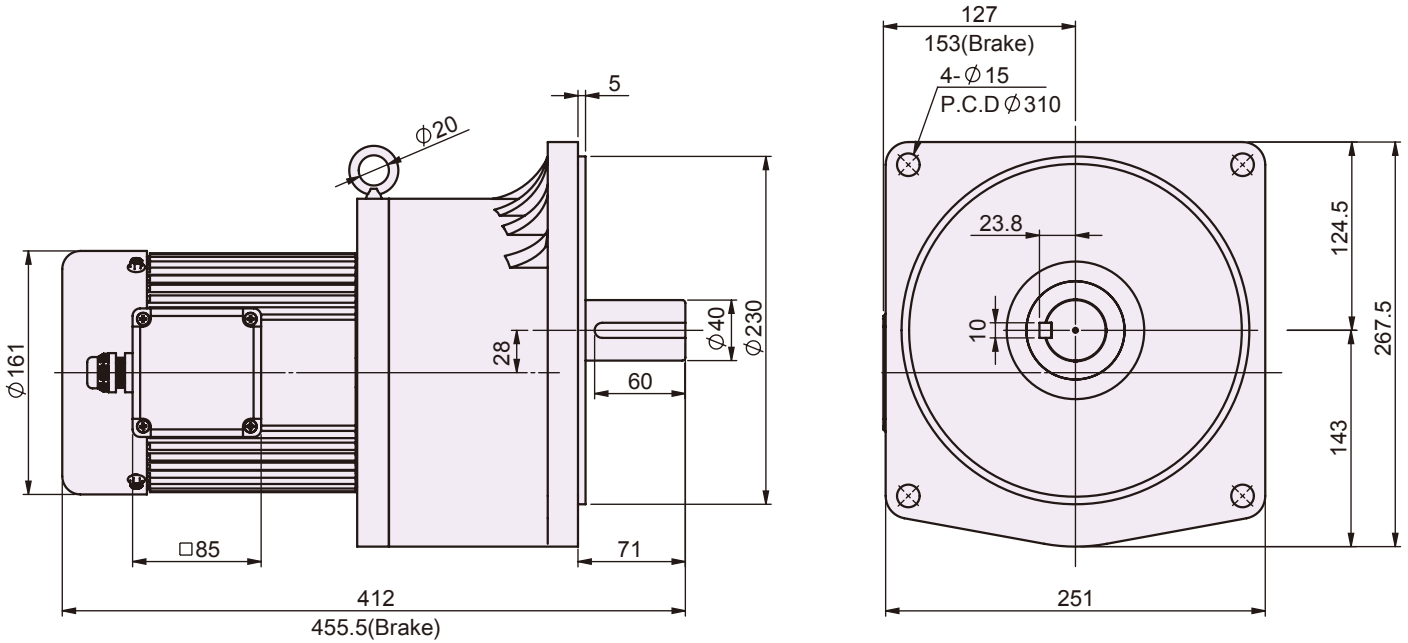
| Gear Ratio | 30 | | 40 | | 50 | | 60 | | 75 | | 80 | | 90 | | 100 | | 120 | | 150 | | 180 | |
|----------------------------------|-------|-------|-------|-------|-------|-------|-------|-------|-------|-------|-------|-------|-------|-------|-------|-------|-------|-------|-------|-------|-------|-------|
| | 50HZ | 60HZ | 50HZ | 60HZ | 50HZ | 60HZ | 50HZ | 60HZ | 50HZ | 60HZ | 50HZ | 60HZ | 50HZ | 60HZ | 50HZ | 60HZ | 50HZ | 60HZ | 50HZ | 60HZ | 50HZ | 60HZ |
| Output rpm | 50 | 60 | 37.5 | 45 | 30 | 36 | 25 | 30 | 20 | 24 | 19 | 22.5 | 16 | 20 | 15 | 18 | 12.5 | 15 | 10 | 12 | 8 | 10 |
| Output Torque (Kg.m) | 12.48 | 10.56 | 16.64 | 14.08 | 20.80 | 17.60 | 24.96 | 21.12 | 31.20 | 26.40 | 33.28 | 28.16 | 37.44 | 31.68 | 41.60 | 35.20 | 49.92 | 42.24 | 62.40 | 52.80 | 74.88 | 63.36 |
| Permissible Overhung Load* (Kgf) | 390 | 370 | 430 | 410 | 470 | 440 | 470 | 470 | 470 | 470 | 470 | 470 | 470 | 470 | 470 | 470 | 470 | 470 | 470 | 470 | 470 | 470 |

* Applied to the output shaft center.
* () For light loading type.

G15V-750W

SINGLE/3-PHASE V-CASING TYPE PRECISION GEAR MOTOR

Terminal box position: at 270° for V-casing type.



| KW | Full Load Current (Amp) | | | | | | | | Full Load Running (rpm) | |
|----------------------------------|-------------------------|-------|-------|-------|---------|-------|-------|-------|-------------------------|-------|
| | 3 Phase | | | | 1 Phase | | | | | |
| | 220V | | 380V | | 110V | 220V | | 50HZ | 60HZ | |
| | 50HZ | 60HZ | 50HZ | 60HZ | 60HZ | 60HZ | | | | |
| 750W | 3.2 | 2.98 | 1.9 | 1.71 | 10.35 | 5.18 | | 1400 | 1700 | |
| ◎ GEAR MOTOR SPECIFICATION | | | | | | | | | | |
| Gear Ratio | 80 | | 100 | | 120 | | 150 | | 200 | |
| | 50HZ | 60HZ | 50HZ | 60HZ | 50HZ | 60HZ | 50HZ | 60HZ | 50HZ | 60HZ |
| Output rpm | 19 | 22.5 | 15 | 18 | 12.5 | 15 | 10 | 12 | 7 | 9 |
| Output Torque (Kg.m) | 33.28 | 28.16 | 41.60 | 35.20 | 49.92 | 42.24 | 62.40 | 52.80 | 79.04 | 66.88 |
| Permissible Overhung Load* (Kgf) | 570 | 570 | 570 | 570 | 570 | 570 | 570 | 570 | 570 | 570 |

* Applied to the output shaft center.

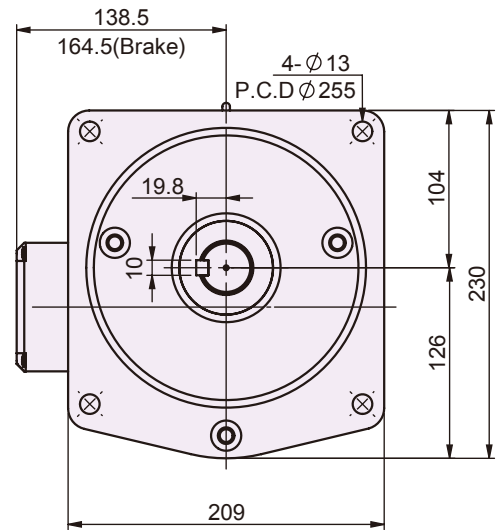
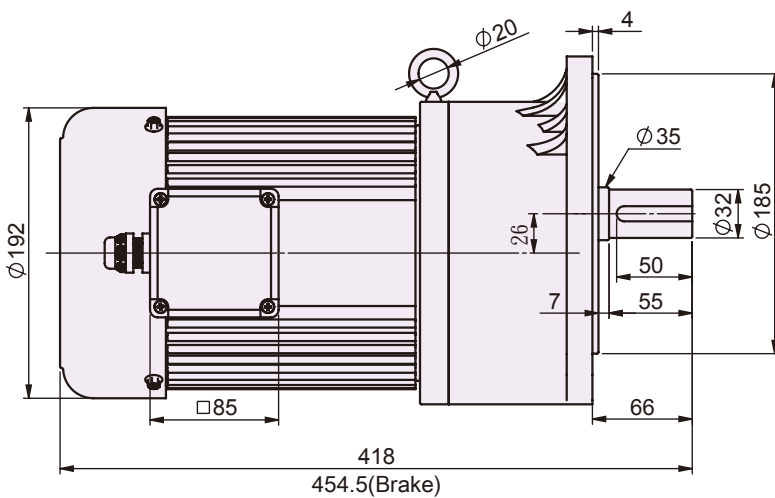
YTK CO.,LTD.
[Http://www.ytk-group.co.jp](http://www.ytk-group.co.jp)

Products due to human error, natural disasters or other factors lead to poor or damaged, will not be covered under warranty.

G14V-1500W

3-PHASE V-CASING TYPE PRECISION GEAR MOTOR

Terminal box position: at 270° for V-casing type.



| KW | Full Load Current (Amp) | | | | Full Load Running (rpm) | |
|-------|-------------------------|------|------|------|-------------------------|------|
| | 3 Phase | | | | | |
| | 220V | | 380V | | | |
| | 50HZ | 60HZ | 50HZ | 60HZ | 50HZ | 60HZ |
| 1500W | 5.9 | 5.6 | 3.4 | 3.2 | 1400 | 1700 |

GEAR MOTOR SPECIFICATION

| Gear Ratio | 3 | | 5 | | 10 | | 15 | | 20 | | 25 | | 30 | | 40 | | 50 | | 60 | |
|----------------------------------|------|------|------|------|------|------|-------|-------|-------|-------|-------|-------|------|-------|------|------|------|-------|------|-------|
| | 50HZ | 60HZ | 50HZ | 60HZ | 50HZ | 60HZ | 50HZ | 60HZ | 50HZ | 60HZ | 50HZ | 60HZ | 50HZ | 60HZ | 50HZ | 60HZ | 50HZ | 60HZ | 50HZ | 60HZ |
| Output rpm | 500 | 600 | 300 | 360 | 150 | 180 | 100 | 120 | 75 | 90 | 60 | 72 | 50 | 60 | 37.5 | 45 | 30 | 36 | 25 | 30 |
| Output Torque (Kg.m) | 2.75 | 2.27 | 4.59 | 3.78 | 9.18 | 7.57 | 13.77 | 11.35 | 18.36 | 15.13 | 20.25 | 16.69 | 24.3 | 20.03 | 32.4 | 26.7 | 40.5 | 33.38 | 48.6 | 40.05 |
| Permissible Overhung Load* (Kgf) | 180 | 170 | 220 | 200 | 270 | 260 | 310 | 290 | 340 | 320 | 370 | 350 | 390 | 370 | 430 | 410 | 470 | 440 | 470 | 470 |

* Applied to the output shaft center.

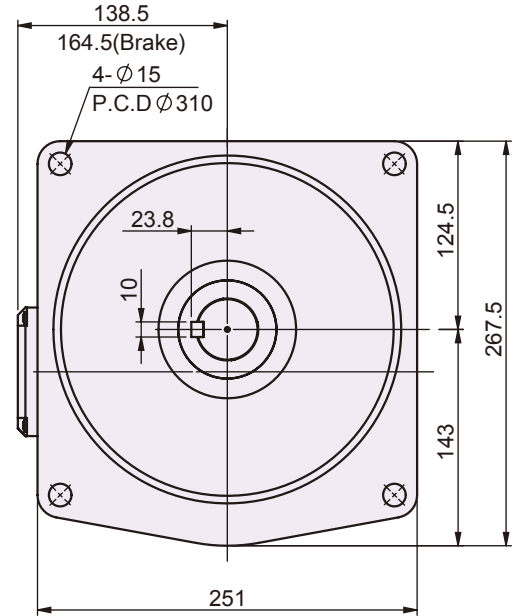
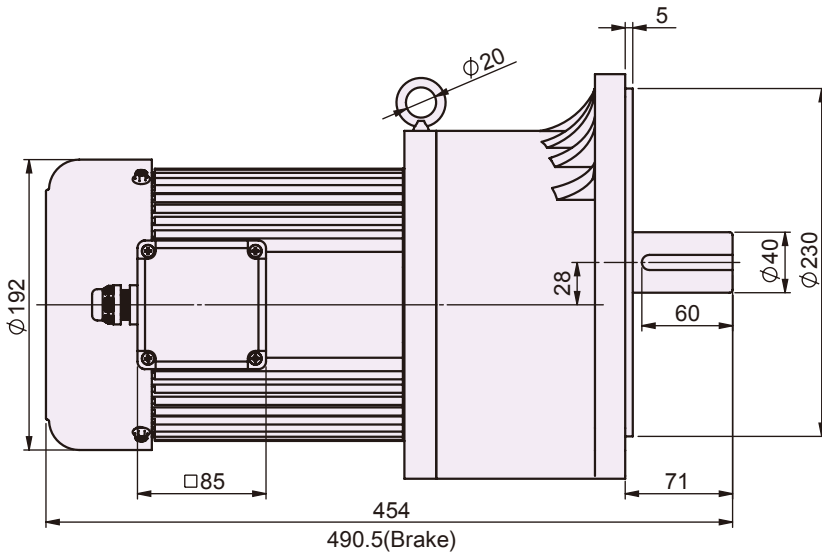
YTK CO.,LTD.
[Http://www.ytk-group.co.jp](http://www.ytk-group.co.jp)

100W V-Casing Types
 200W V-Casing Types
 400W V-Casing Types
 750W V-Casing Types
 1500W V-Casing Types
 2200W V-Casing Types
 100W Foot-Mount Types
 200W Foot-Mount Types
 400W Foot-Mount Types
 750W Foot-Mount Types
 1500W Foot-Mount Types
 2200W Foot-Mount Types

G15V-1500W

3-PHASE V-CASING TYPE PRECISION GEAR MOTOR

Terminal box position: at 270° for V-casing type.



| KW | Full Load Current (Amp) | | | | | | | | Full Load Running (rpm) | |
|----------------------------------|-------------------------|-------|------|-------|-------|-------|-------|-------|-------------------------|-------|
| | 3 Phase | | | | | | | | | |
| | 220V | | | | 380V | | | | | |
| | 50HZ | 60HZ | 50HZ | 60HZ | 50HZ | 60HZ | 50HZ | 60HZ | | |
| 1500W | 5.9 | 5.6 | 3.4 | 3.2 | 1400 | 1700 | | | | |
| ◎ GEAR MOTOR SPECIFICATION | | | | | | | | | | |
| Gear Ratio | 50 | | 60 | | 75 | | 80 | | 90 | |
| | 50HZ | 60HZ | 50HZ | 60HZ | 50HZ | 60HZ | 50HZ | 60HZ | 50HZ | 60HZ |
| Output rpm | 30 | 36 | 25 | 30 | 20 | 24 | 19 | 22.5 | 16 | 20 |
| Output Torque (Kg.m) | 40.5 | 33.38 | 48.6 | 40.05 | 60.75 | 50.06 | 72.44 | 60.37 | 72.9 | 60.08 |
| Permissible Overhung Load* (Kgf) | 570 | 530 | 570 | 570 | 570 | 570 | 570 | 570 | 570 | 570 |

* Applied to the output shaft center.

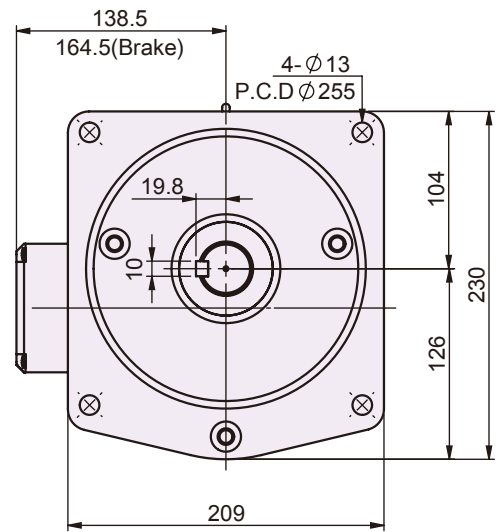
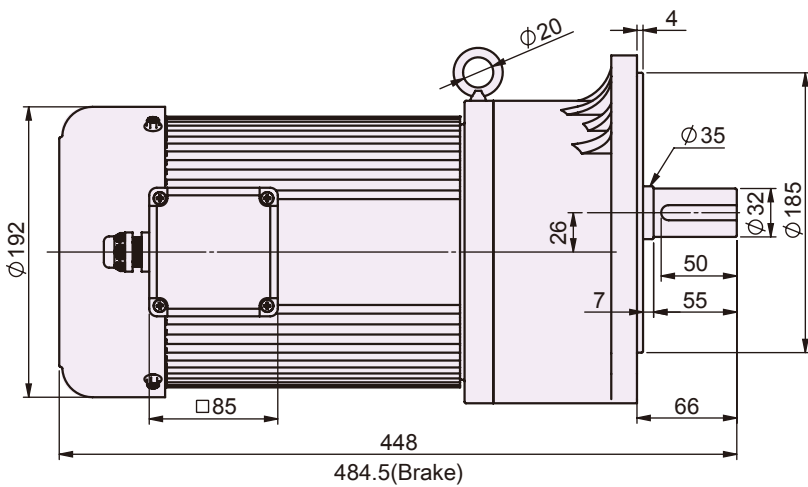
YTK CO.,LTD.
[Http://www.ytk-group.co.jp](http://www.ytk-group.co.jp)

Products due to human error, natural disasters or other factors lead to poor or damaged, will not be covered under warranty.

G14V-2200W

3-PHASE V-CASING TYPE PRECISION GEAR MOTOR

Terminal box position: at 270° for V-casing type.



| KW | Full Load Current (Amp) | | | | Full Load Running (rpm) | |
|-------|-------------------------|------|------|------|-------------------------|------|
| | 3 Phase | | | | | |
| | 220V | | 380V | | | |
| | 50HZ | 60HZ | 50HZ | 60HZ | 50HZ | 60HZ |
| 2200W | 8.88 | 8.09 | 5.09 | 4.71 | 1400 | 1700 |

◎ GEAR MOTOR SPECIFICATION

| Gear Ratio | 3 | | 5 | | 10 | | 15 | | 20 | | 25 | | 30 | | 40 | |
|----------------------------------|------|------|------|------|-------|-------|-------|-------|-------|-------|-------|-------|-------|-------|-------|------|
| | 50HZ | 60HZ | 50HZ | 60HZ | 50HZ | 60HZ | 50HZ | 60HZ | 50HZ | 60HZ | 50HZ | 60HZ | 50HZ | 60HZ | 50HZ | 60HZ |
| Output rpm | 500 | 600 | 300 | 360 | 150 | 180 | 100 | 120 | 75 | 90 | 60 | 72 | 50 | 60 | 37.5 | 45 |
| Output Torque (Kg.m) | 4.05 | 3.32 | 6.76 | 5.53 | 13.51 | 11.05 | 20.27 | 16.58 | 27.03 | 22.10 | 29.81 | 24.38 | 35.78 | 29.25 | 47.70 | 39 |
| Permissible Overhung Load* (Kgf) | 180 | 170 | 220 | 200 | 270 | 260 | 310 | 290 | 340 | 320 | 370 | 350 | 390 | 370 | 430 | 410 |

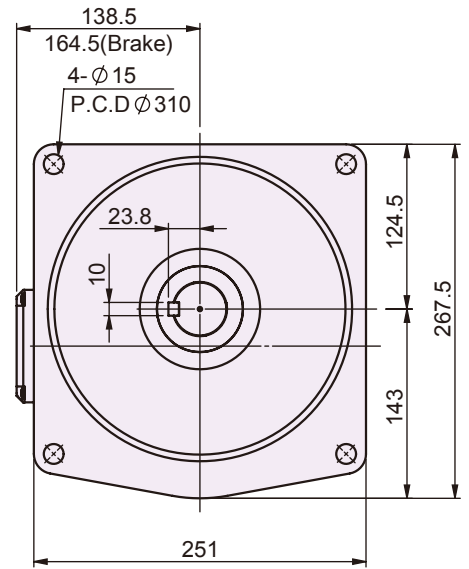
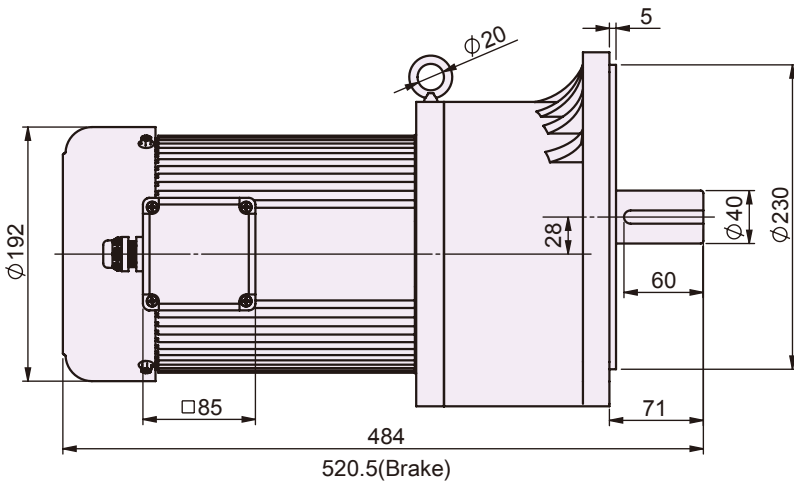
* Applied to the output shaft center.
* () For light loading type.

100W V-Casing Types
200W V-Casing Types
400W V-Casing Types
750W V-Casing Types
1500W V-Casing Types
2200W V-Casing Types
100W Foot-Mount Types
200W Foot-Mount Types
400W Foot-Mount Types
750W Foot-Mount Types
1500W Foot-Mount Types
2200W Foot-Mount Types

G15V-2200W

3-PHASE V-CASING TYPE PRECISION GEAR MOTOR

Terminal box position: at 270° for V-casing type.



| KW | Full Load Current (Amp) | | | | Full Load Running (rpm) | |
|-------|-------------------------|------|------|------|-------------------------|------|
| | 3 Phase | | | | | |
| | 220V | | 380V | | | |
| | 50HZ | 60HZ | 50HZ | 60HZ | 50HZ | 60HZ |
| 2200W | 8.88 | 8.09 | 5.09 | 4.71 | 1400 | 1700 |

◎ GEAR MOTOR SPECIFICATION

| Gear Ratio | 3 | | 5 | | 10 | | 15 | | 20 | | 25 | | 30 | | 40 | | 50 | | 60 | | 75 | | 80 | | 90 | | |
|---------------------------------|------|------|------|------|-------|-------|-------|-------|-------|------|-------|-------|-------|-------|------|------|-------|-------|-------|------|-------|------|--------|-------|--------|-------|-----|
| | 50HZ | 60HZ | 50HZ | 60HZ | 50HZ | 60HZ | 50HZ | 60HZ | 50HZ | 60HZ | 50HZ | 60HZ | 50HZ | 60HZ | 50HZ | 60HZ | 50HZ | 60HZ | 50HZ | 60HZ | 50HZ | 60HZ | 50HZ | 60HZ | 50HZ | 60HZ | |
| Output rpm | 500 | 600 | 300 | 360 | 150 | 180 | 100 | 120 | 75 | 90 | 60 | 72 | 50 | 60 | 37.5 | 45 | 30 | 36 | 25 | 30 | 20 | 24 | 19 | 22.5 | 16 | 20 | |
| Output Torque (Kg.m) | 4.05 | 3.32 | 6.76 | 5.53 | 13.51 | 11.05 | 20.27 | 16.58 | 27.03 | 22.1 | 29.81 | 24.38 | 35.78 | 29.25 | 47.7 | 39 | 50.24 | 41.62 | 79.68 | 66.4 | 99.61 | 83 | 106.25 | 88.54 | 119.53 | 99.61 | |
| Permissible Overhung Load* (Kg) | 220 | 210 | 260 | 250 | 330 | 310 | 380 | 360 | 420 | 390 | 450 | 420 | 480 | 450 | 530 | 490 | 570 | 530 | 570 | 570 | 570 | 570 | 570 | 570 | 570 | 570 | 570 |

* Applied to the output shaft center.

* () For light loading type.

Products due to human error, natural disasters or other factors lead to poor or damaged, will not be covered under warranty.

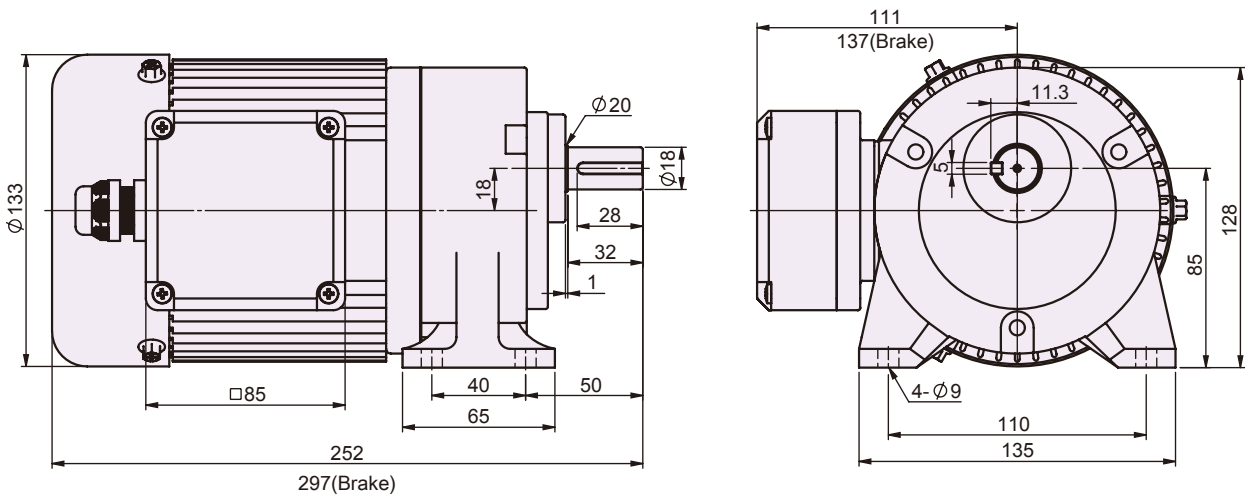
YTK CO.,LTD.

[Http://www.ytk-group.co.jp](http://www.ytk-group.co.jp)

G11H-100W

SINGLE/3-PHASE FOOT-MOUNT TYPE PRECISION GEAR MOTOR

Terminal box position: at 270° for foot - mount type.



| KW | Full Load Current (Amp) | | | | | | | | | | | | | | Full Load Running (rpm) | | | | | | | | | |
|----------------------------------|-------------------------|------|------|------|------|------|------|------|---------|------|------|------|------|------|-------------------------|------|------|------|------|------|------|------|------|------|
| | 3 Phase | | | | | | | | 1 Phase | | | | | | | | | | | | | | | |
| | 220V | | | | 380V | | | | 110V | | | 220V | | | 50HZ | | 60HZ | | | | | | | |
| | 50HZ | 60HZ | 50HZ | 60HZ | 50HZ | 60HZ | 50HZ | 60HZ | 50HZ | 60HZ | 50HZ | 60HZ | 50HZ | 60HZ | 50HZ | 60HZ | 50HZ | 60HZ | | | | | | |
| 100W | 0.66 | 0.58 | 0.35 | 0.32 | | | | | | 1.41 | | | | | | | | | | 1400 | 1700 | | | |
| ◎ GEAR MOTOR SPECIFICATION | | | | | | | | | | | | | | | | | | | | | | | | |
| Gear Ratio | 3 | | 5 | | 10 | | 15 | | 20 | | 25 | | 30 | | 40 | | 50 | | 60 | | 75 | | 90 | |
| | 50HZ | 60HZ | 50HZ | 60HZ | 50HZ | 60HZ | 50HZ | 60HZ | 50HZ | 60HZ | 50HZ | 60HZ | 50HZ | 60HZ | 50HZ | 60HZ | 50HZ | 60HZ | 50HZ | 60HZ | 50HZ | 60HZ | 50HZ | 60HZ |
| Output rpm | 500 | 600 | 300 | 360 | 150 | 180 | 100 | 120 | 75 | 90 | 60 | 72 | 50 | 60 | 37.5 | 45 | 30 | 36 | 25 | 30 | 20 | 24 | 16 | 20 |
| Output Torque (Kg.m) | 0.18 | 0.15 | 0.3 | 0.26 | 0.6 | 0.51 | 0.89 | 0.76 | 1.2 | 1.02 | 1.31 | 1.12 | 1.58 | 1.35 | 2.02 | 1.8 | 2.62 | 2.25 | 3.15 | 2.7 | 3.94 | 3.6 | 4.73 | 4.59 |
| Permissible Overhung Load* (Kgf) | 70 | 60 | 80 | 70 | 100 | 90 | 110 | 110 | 130 | 120 | 140 | 130 | 140 | 140 | 160 | 150 | 170 | 160 | 170 | 170 | 170 | 170 | 170 | 170 |

* Applied to the output shaft center.

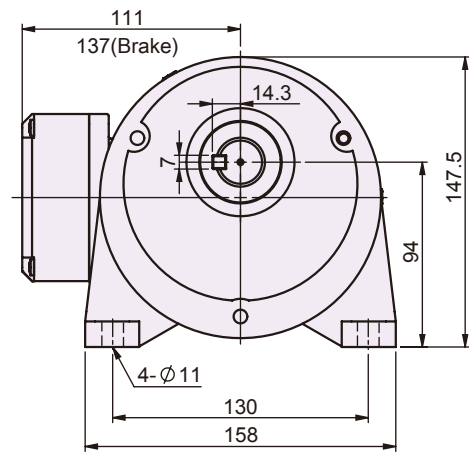
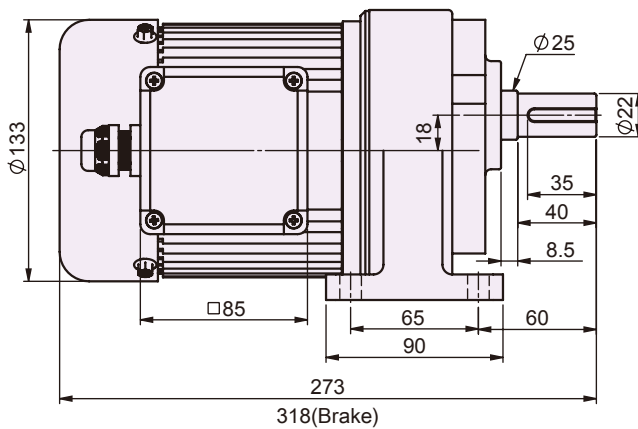
YTK CO.,LTD.
[Http://www.ytk-group.co.jp](http://www.ytk-group.co.jp)

100W V-Casing Types
 200W V-Casing Types
 400W V-Casing Types
 750W V-Casing Types
 1500W V-Casing Types
 2200W V-Casing Types
 100W Foot-Mount Types
 200W Foot-Mount Types
 400W Foot-Mount Types
 750W Foot-Mount Types
 1500W Foot-Mount Types
 2200W Foot-Mount Types

G12H-100W

SINGLE/3-PHASE FOOT-MOUNT TYPE PRECISION GEAR MOTOR

Terminal box position: at 270° for foot - mount type.



| KW | Full Load Current (Amp) | | | | | | | Full Load Running (rpm) | | | | |
|----------------------------------|-------------------------|------|------|------|---------|------|------|-------------------------|------|------|------|------|
| | 3 Phase | | | | 1 Phase | | | | | | | |
| | 220V | | 380V | | 110V | 220V | | | | | | |
| | 50HZ | 60HZ | 50HZ | 60HZ | 60HZ | 60HZ | 50HZ | 60HZ | | | | |
| 100W | 0.66 | 0.58 | 0.35 | 0.32 | 1.41 | 0.79 | | 1400 | 1700 | | | |
| ◎ GEAR MOTOR SPECIFICATION | | | | | | | | | | | | |
| Gear Ratio | 75 | | 90 | | 100 | | 120 | | 150 | | 165 | |
| | 50HZ | 60HZ | 50HZ | 60HZ | 50HZ | 60HZ | 50HZ | 60HZ | 50HZ | 60HZ | 50HZ | 60HZ |
| Output rpm | 20 | 24 | 16 | 20 | 15 | 18 | 12.5 | 15 | 10 | 12 | 9 | 11 |
| Output Torque (Kg.m) | 3.94 | 3.6 | 4.73 | 4.59 | 5.25 | 5.10 | 6.30 | 6.12 | 7.88 | 7.65 | 9.96 | 8.30 |
| Permissible Overhung Load* (Kgf) | 240 | 240 | 240 | 240 | 240 | 240 | 240 | 240 | 240 | 240 | 240 | 240 |

* Applied to the output shaft center.

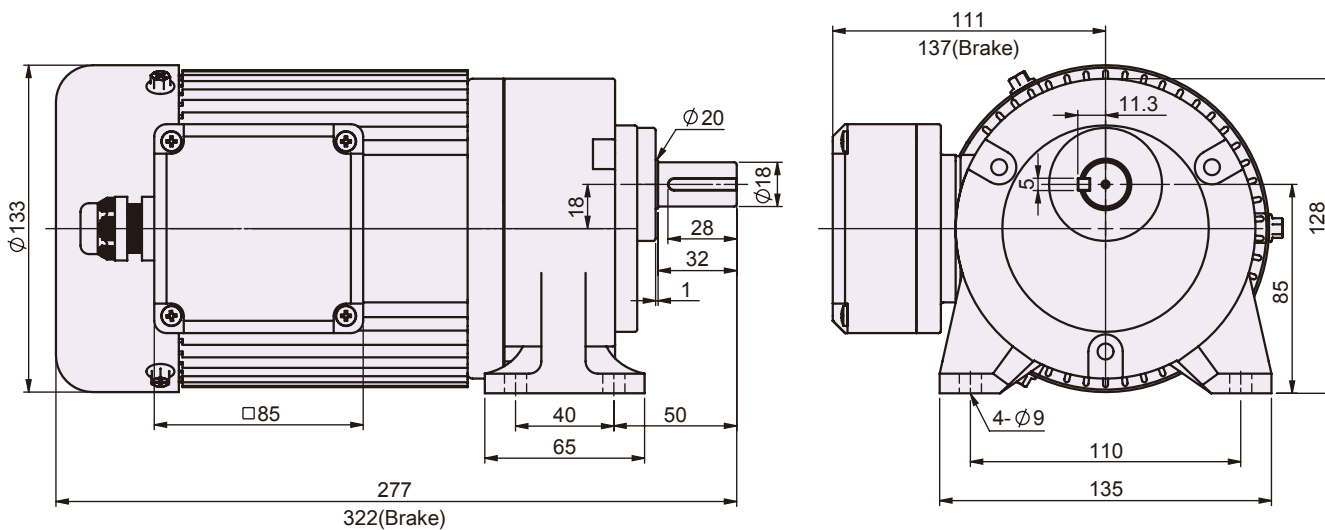
Products due to human error, natural disasters or other factors lead to poor or damaged, will not be covered under warranty.

YTK CO.,LTD.
[Http://www.ytk-group.co.jp](http://www.ytk-group.co.jp)

G11H-200W

SINGLE/3-PHASE FOOT-MOUNT TYPE PRECISION GEAR MOTOR

Terminal box position: at 270° for foot - mount type.



| KW | Full Load Current (Amp) | | | | | | Full Load Running (rpm) | |
|------|-------------------------|------|------|------|---------|------|-------------------------|------|
| | 3 Phase | | | | 1 Phase | | | |
| | 220V | | 380V | | 110V | 220V | 50HZ | 60HZ |
| | 50HZ | 60HZ | 50HZ | 60HZ | 60HZ | 60HZ | | |
| 200W | 1.28 | 1.29 | 0.72 | 0.66 | 2.59 | 1.42 | 1400 | 1700 |

GEAR MOTOR SPECIFICATION

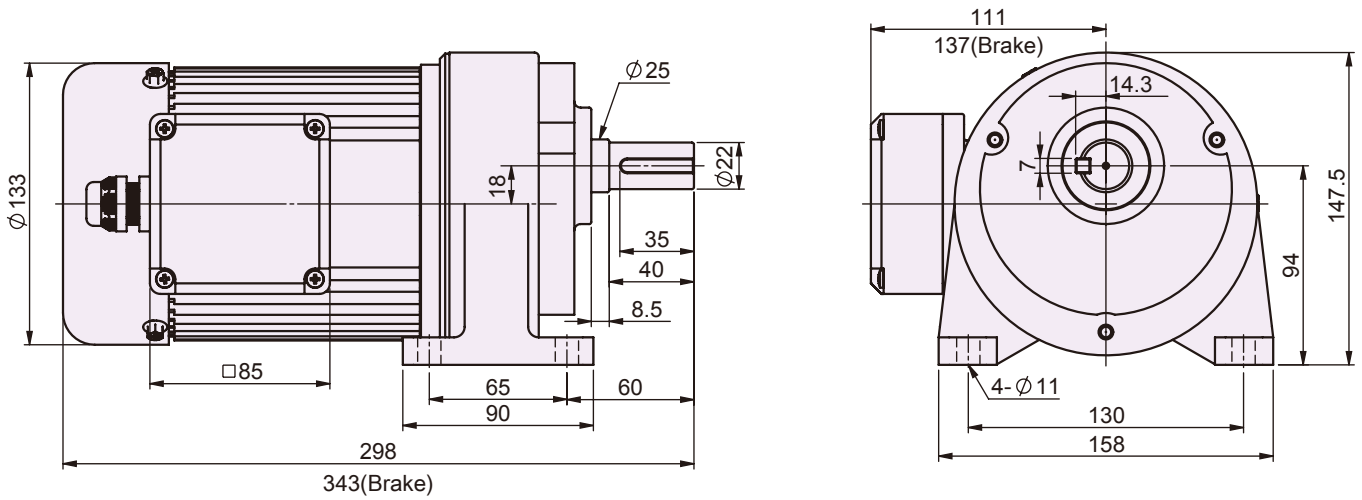
| Gear Ratio | 3 | | 5 | | 7.5 | | 10 | | 15 | | 20 | | 25 | | 30 | | 40 | | 50 | | 60 | | 75 | | 90 | | |
|----------------------------------|------|------|------|------|------|------|------|------|------|------|------|------|------|------|------|------|------|------|------|------|------|------|------|------|------|------|-----|
| | 50HZ | 60HZ | 50HZ | 60HZ | 50HZ | 60HZ | 50HZ | 60HZ | 50HZ | 60HZ | 50HZ | 60HZ | 50HZ | 60HZ | 50HZ | 60HZ | 50HZ | 60HZ | 50HZ | 60HZ | 50HZ | 60HZ | 50HZ | 60HZ | 50HZ | 60HZ | |
| Output rpm | 500 | 600 | 300 | 360 | 200 | 240 | 150 | 180 | 100 | 120 | 75 | 90 | 60 | 72 | 50 | 60 | 37.5 | 45 | 30 | 36 | 25 | 30 | 20 | 24 | 16 | 20 | |
| Output Torque (Kg.m) | 0.36 | 0.31 | 0.6 | 0.52 | 0.9 | 0.75 | 1.19 | 1.02 | 1.79 | 1.53 | 2.1 | 1.8 | 2.63 | 2.25 | 3.15 | 2.7 | 4.2 | 3.6 | 5.25 | 4.5 | 6.3 | 5.4 | 7.88 | 6.75 | 9.45 | 8.1 | |
| Permissible Overhung Load* (Kgf) | 70 | 60 | 80 | 70 | 90 | 90 | 100 | 90 | 110 | 110 | 130 | 120 | 140 | 130 | 140 | 140 | 160 | 150 | 170 | 160 | 170 | 170 | 170 | 170 | 170 | 170 | 170 |

* Applied to the output shaft center.
 * () For light loading type.

G12H-200W

SINGLE/3-PHASE FOOT-MOUNT TYPE PRECISION GEAR MOTOR

Terminal box position: at 270° for foot - mount type.



| KW | Full Load Current (Amp) | | | | | | | | | | | | | | | | Full Load Running (rpm) | | | | | | | |
|-----------------------------------|-------------------------|------|------|------|------|------|------|------|---------|------|------|------|------|------|------|------|-------------------------|------|------|------|-------|------|-------|------|
| | 3 Phase | | | | | | | | 1 Phase | | | | | | | | | | | | | | | |
| | 220V | | | | 380V | | | | 110V | | | | 220V | | | | | | | | | | | |
| | 50HZ | 60HZ | 50HZ | 60HZ | 50HZ | 60HZ | 50HZ | 60HZ | 60HZ | 60HZ | 60HZ | 60HZ | 50HZ | 60HZ | | | | | | | | | | |
| 200W | 1.28 | 1.29 | 0.72 | 0.66 | 2.59 | 1.42 | 1400 | 1700 | | | | | | | | | | | | | | | | |
| ◎ GEAR MOTOR SPECIFICATION | | | | | | | | | | | | | | | | | | | | | | | | |
| Gear Ratio | 20 | | 30 | | 40 | | 50 | | 60 | | 75 | | 80 | | 90 | | 100 | | 120 | | 150 | | 165 | |
| | 50HZ | 60HZ | 50HZ | 60HZ | 50HZ | 60HZ | 50HZ | 60HZ | 50HZ | 60HZ | 50HZ | 60HZ | 50HZ | 60HZ | 50HZ | 60HZ | 50HZ | 60HZ | 50HZ | 60HZ | 50HZ | 60HZ | 50HZ | 60HZ |
| Output rpm | 75 | 90 | 50 | 60 | 37.5 | 45 | 30 | 36 | 25 | 30 | 20 | 24 | 19 | 22.5 | 16 | 20 | 15 | 18 | 12.5 | 15 | 10 | 12 | 9 | 11 |
| Output Torque (Kg.m) | 2.10 | 1.80 | 3.15 | 2.70 | 4.20 | 3.60 | 5.25 | 4.50 | 6.30 | 5.40 | 7.88 | 6.75 | 9.65 | 8.04 | 9.45 | 8.10 | 10.59 | 9 | 12.6 | 10.8 | 15.75 | 13.5 | 19.92 | 16.6 |
| Permissible Overhung Load* (Kgf) | 180 | 170 | 200 | 190 | 220 | 210 | 240 | 230 | 240 | 240 | 240 | 240 | 240 | 240 | 240 | 240 | 240 | 240 | 240 | 240 | 240 | 240 | 240 | 240 |

* Applied to the output shaft center.

() For light loading type.

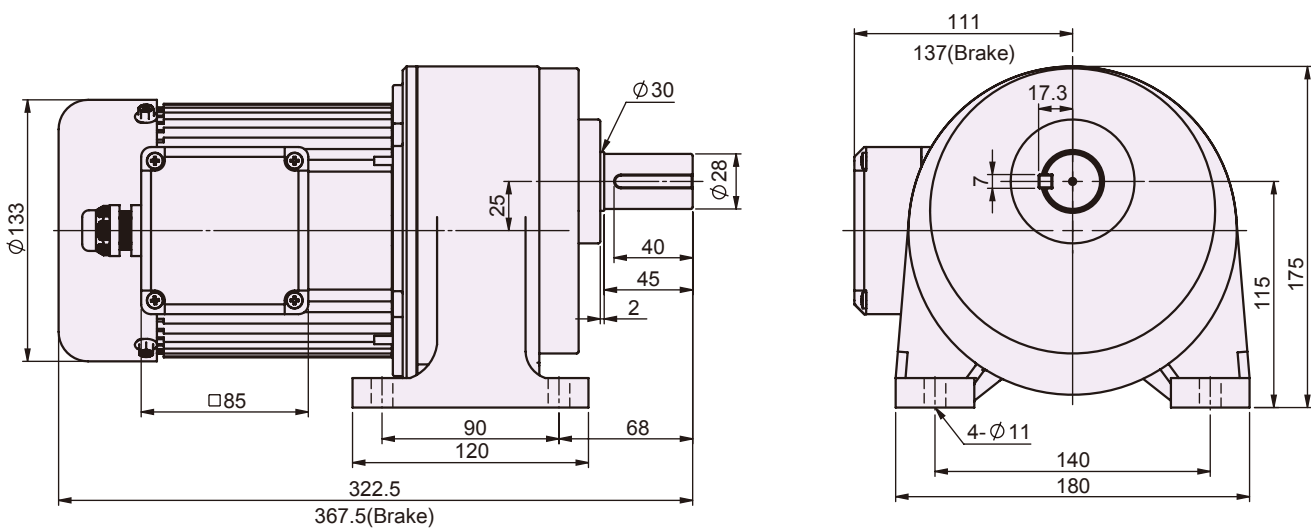
Products due to human error, natural disasters or other factors lead to poor or damaged, will not be covered under warranty.

YTK CO.,LTD.
[Http://www.ytk-group.co.jp](http://www.ytk-group.co.jp)

G13H-200W

SINGLE/3-PHASE FOOT-MOUNT TYPE PRECISION GEAR MOTOR

Terminal box position: at 270° for foot - mount type.



| KW | Full Load Current (Amp) | | | | | | Full Load Running (rpm) | | | |
|----------------------------------|-------------------------|------|------|------|---------|------|-------------------------|------|-------|-------|
| | 3 Phase | | | | 1 Phase | | | | | |
| | 220V | | 380V | | 110V | 220V | 50HZ | 60HZ | | |
| | 50HZ | 60HZ | 50HZ | 60HZ | 60HZ | 60HZ | | | | |
| 200W | 1.28 | 1.29 | 0.72 | 0.66 | 2.59 | 1.42 | 1400 | 1700 | | |
| ⊙ GEAR MOTOR SPECIFICATION | | | | | | | | | | |
| Gear Ratio | 100 | | 120 | | 150 | | 165 | | 180 | |
| | 50HZ | 60HZ | 50HZ | 60HZ | 50HZ | 60HZ | 50HZ | 60HZ | 50HZ | 60HZ |
| Output rpm | 15 | 18 | 12.5 | 15 | 10 | 12 | 9 | 11 | 8 | 10 |
| Output Torque (Kg.m) | 10.59 | 9 | 12.6 | 10.8 | 15.75 | 13.5 | 19.92 | 16.6 | 21.73 | 18.11 |
| Permissible Overhung Load* (Kgf) | 400 | 400 | 400 | 400 | 400 | 400 | 400 | 400 | 400 | 400 |

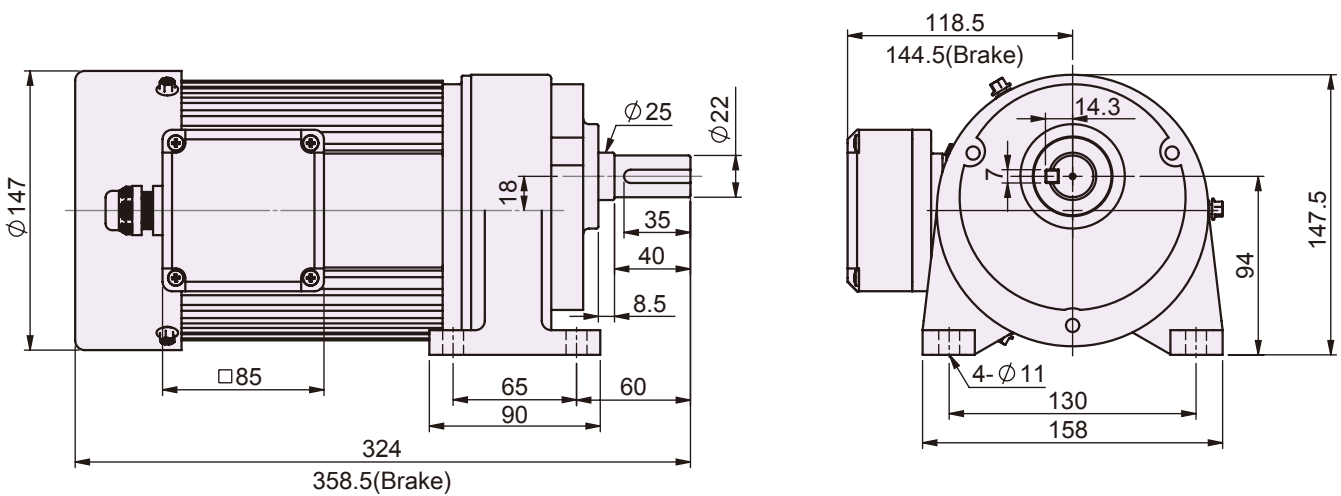
* Applied to the output shaft center.

YTK CO.,LTD.
[Http://www.ytk-group.co.jp](http://www.ytk-group.co.jp)

G12H-400W

SINGLE/3-PHASE FOOT-MOUNT TYPE PRECISION GEAR MOTOR

Terminal box position: at 270° for foot - mount type.



| KW | Full Load Current (Amp) | | | | | | | | | | | | | | Full Load Running (rpm) | | | | | | | | | | | | |
|----------------------------------|-------------------------|------|------|------|------|------|---------|------|------|------|------|------|------|------|-------------------------|------|------|------|-------|------|-------|-------|-------|-------|-------|-------|-----|
| | 3 Phase | | | | | | 1 Phase | | | | | | | | | | | | | | | | | | | | |
| | 220V | | 380V | | | | 110V | | 220V | | | | | | | | | | | | | | | | | | |
| | 50HZ | 60HZ | 50HZ | 60HZ | 50HZ | 60HZ | 50HZ | 60HZ | 50HZ | 60HZ | 50HZ | 60HZ | 50HZ | 60HZ | | | | | | | | | | | | | |
| 400W | 2.28 | 1.87 | 1.32 | 1.09 | | | 5.36 | | 2.79 | | | 1400 | 1700 | | | | | | | | | | | | | | |
| ◎ GEAR MOTOR SPECIFICATION | | | | | | | | | | | | | | | | | | | | | | | | | | | |
| Gear Ratio | 3 | | 5 | | 7.5 | | 10 | | 15 | | 20 | | 25 | | 30 | | 40 | | 50 | | 60 | | 75 | | 90 | | |
| | 50HZ | 60HZ | 50HZ | 60HZ | 50HZ | 60HZ | 50HZ | 60HZ | 50HZ | 60HZ | 50HZ | 60HZ | 50HZ | 60HZ | 50HZ | 60HZ | 50HZ | 60HZ | 50HZ | 60HZ | 50HZ | 60HZ | 50HZ | 60HZ | 50HZ | 60HZ | |
| Output rpm | 500 | 600 | 300 | 360 | 200 | 240 | 150 | 180 | 100 | 120 | 75 | 90 | 60 | 72 | 50 | 60 | 37.5 | 45 | 30 | 36 | 25 | 30 | 20 | 24 | 16 | 20 | |
| Output Torque (Kg.m) | 0.74 | 0.62 | 1.24 | 1.04 | 1.86 | 1.55 | 2.48 | 2.07 | 3.71 | 3.11 | 4.40 | 3.68 | 5.50 | 4.60 | 6.60 | 5.52 | 8.80 | 7.36 | 11.00 | 9.20 | 13.20 | 11.04 | 16.50 | 13.80 | 19.80 | 16.56 | |
| Permissible Overhung Load* (Kgf) | 90 | 90 | 110 | 100 | 130 | 120 | 140 | 130 | 160 | 150 | 180 | 170 | 190 | 180 | 200 | 190 | 220 | 210 | 240 | 230 | 240 | 240 | 240 | 240 | 240 | 240 | 240 |

* Applied to the output shaft center.

() For light loading type.

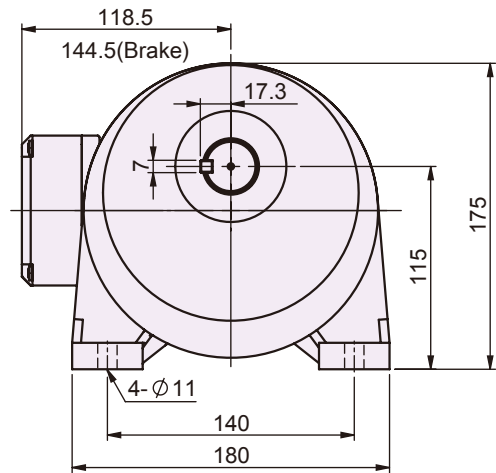
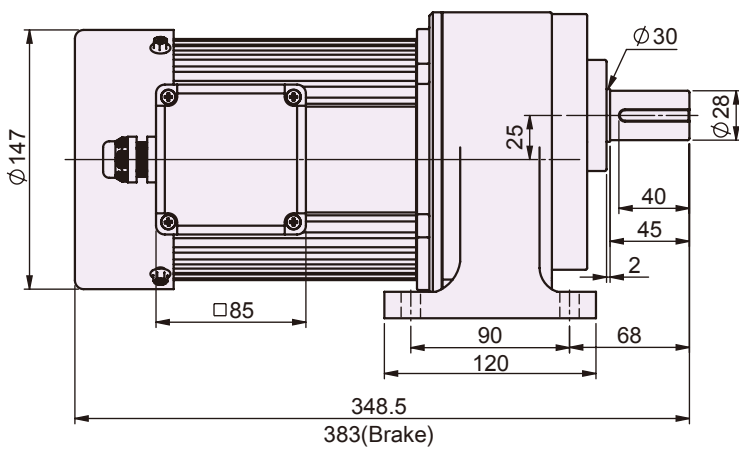
Products due to human error, natural disasters or other factors lead to poor or damaged, will not be covered under warranty.

YTK CO.,LTD.
[Http://www.ytk-group.co.jp](http://www.ytk-group.co.jp)

G13H-400W

SINGLE/3-PHASE FOOT-MOUNT TYPE PRECISION GEAR MOTOR

Terminal box position: at 270° for foot - mount type.



| KW | Full Load Current (Amp) | | | | | | Full Load Running (rpm) | |
|------|-------------------------|------|------|------|---------|------|-------------------------|------|
| | 3 Phase | | | | 1 Phase | | | |
| | 220V | | 380V | | 110V | 220V | 50HZ | 60HZ |
| | 50HZ | 60HZ | 50HZ | 60HZ | 60HZ | 60HZ | | |
| 400W | 2.28 | 1.87 | 1.32 | 1.09 | 5.36 | 2.79 | 1400 | 1700 |

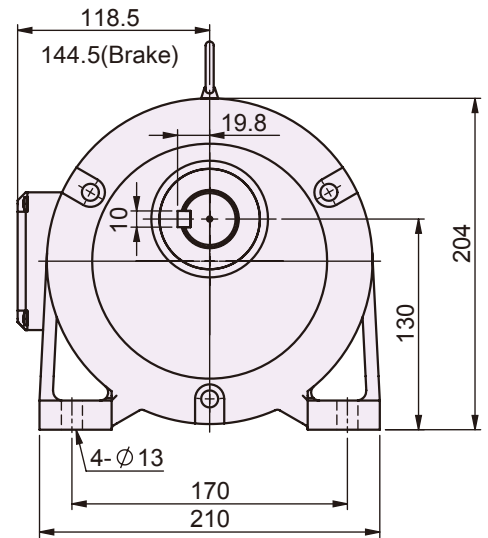
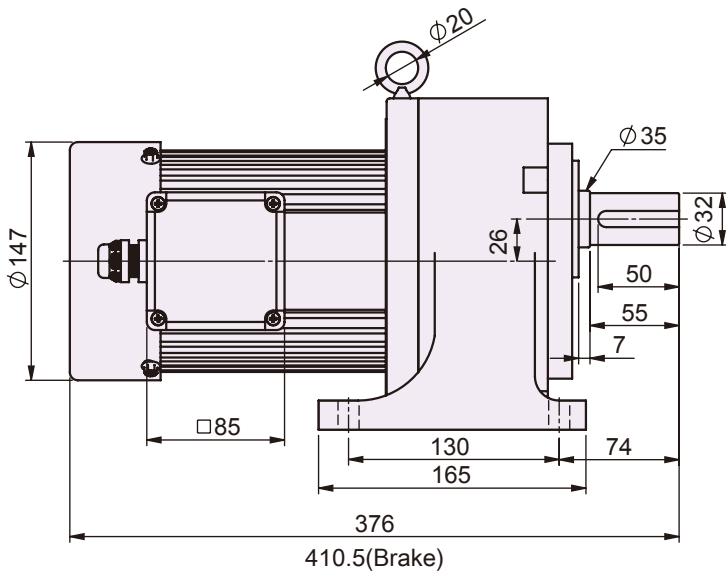
| GEAR MOTOR SPECIFICATION | | | | | | | | | | | | | | | | | | |
|----------------------------------|-------|------|-------|-------|-------|-------|-------|-------|-------|-------|-------|-------|-------|-------|-------|-------|-------|-------|
| Gear Ratio | 50 | | 60 | | 75 | | 90 | | 100 | | 120 | | 150 | | 165 | | 180 | |
| | 50HZ | 60HZ | 50HZ | 60HZ | 50HZ | 60HZ | 50HZ | 60HZ | 50HZ | 60HZ | 50HZ | 60HZ | 50HZ | 60HZ | 50HZ | 60HZ | 50HZ | 60HZ |
| Output rpm | 30 | 36 | 25 | 30 | 20 | 24 | 16 | 20 | 15 | 18 | 12.5 | 15 | 10 | 12 | 9 | 11 | 8 | 10 |
| Output Torque (Kg.m) | 11.00 | 9.20 | 13.20 | 11.04 | 16.50 | 13.80 | 19.80 | 16.56 | 22.00 | 18.40 | 26.40 | 22.08 | 33.00 | 27.60 | 36.30 | 30.36 | 39.60 | 33.12 |
| Permissible Overhung Load* (Kgf) | 400 | 380 | 400 | 400 | 400 | 400 | 400 | 400 | 400 | 400 | 400 | 400 | 400 | 400 | 400 | 400 | 400 | 400 |

* Applied to the output shaft center.
 * () For light loading type.

G14H-400W

SINGLE/3-PHASE FOOT-MOUNT TYPE PRECISION GEAR MOTOR

Terminal box position: at 270° for foot - mount type.



| KW | Full Load Current (Amp) | | | | | | Full Load Running (rpm) | | | |
|---------------------------------|-------------------------|-------|-------|-------|---------|-------|-------------------------|-------|-------|-------|
| | 3 Phase | | | | 1 Phase | | | | | |
| | 220V | | 380V | | 110V | 220V | | | | |
| | 50HZ | 60HZ | 50HZ | 60HZ | 60HZ | 60HZ | 50HZ | 60HZ | | |
| 400W | 2.28 | 1.87 | 1.32 | 1.09 | 5.36 | 2.79 | 1400 | 1700 | | |
| ⊙ GEAR MOTOR SPECIFICATION | | | | | | | | | | |
| Gear Ratio | 100 | | 120 | | 150 | | 165 | | 180 | |
| | 50HZ | 60HZ | 50HZ | 60HZ | 50HZ | 60HZ | 50HZ | 60HZ | 50HZ | 60HZ |
| Output rpm | 15 | 18 | 12.5 | 15 | 10 | 12 | 9 | 11 | 8 | 10 |
| Output Torque (Kg.m) | 22.00 | 18.40 | 26.40 | 22.08 | 33.00 | 27.60 | 36.30 | 30.36 | 39.60 | 33.12 |
| Permissible Overhung Load* (Kg) | 470 | 470 | 470 | 470 | 470 | 470 | 470 | 470 | 470 | 470 |

* Applied to the output shaft center.

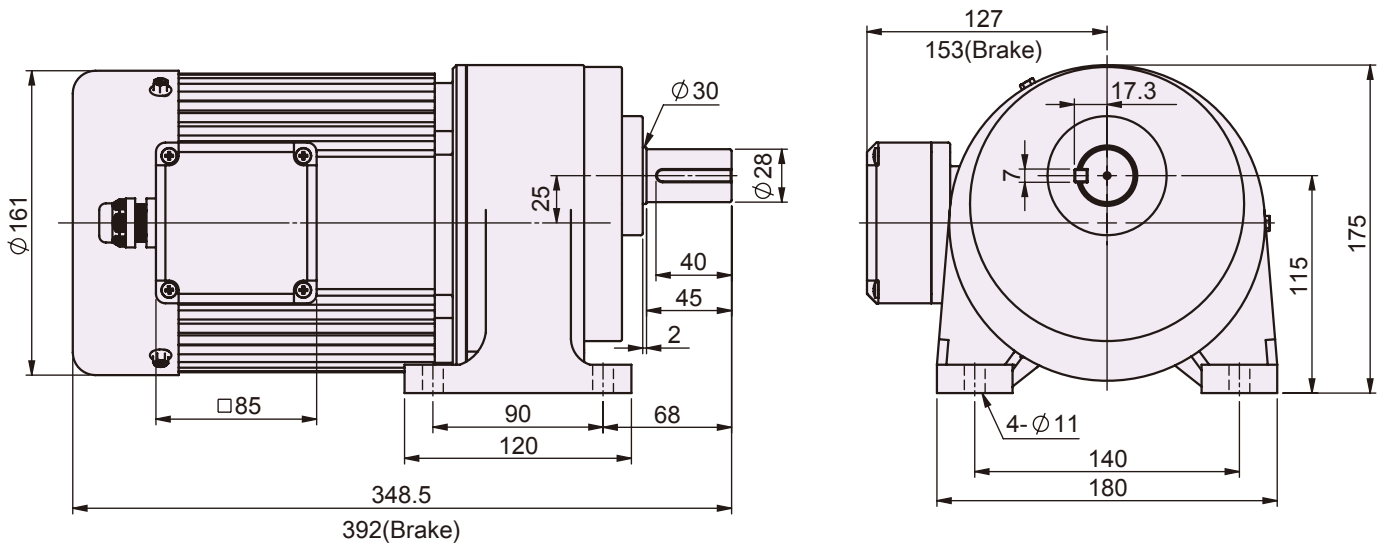
Products due to human error, natural disasters or other factors lead to poor or damaged, will not be covered under warranty.

YTK CO.,LTD.
[Http://www.ytk-group.co.jp](http://www.ytk-group.co.jp)

G13H-750W

SINGLE/3-PHASE FOOT-MOUNT TYPE PRECISION GEAR MOTOR

Terminal box position: at 270° for foot - mount type.



| KW | Full Load Current (Amp) | | | | | | Full Load Running (rpm) | |
|------|-------------------------|------|------|------|---------|------|-------------------------|------|
| | 3 Phase | | | | 1 Phase | | | |
| | 220V | | 380V | | 110V | 220V | 50HZ | 60HZ |
| | 50HZ | 60HZ | 50HZ | 60HZ | 60HZ | 60HZ | | |
| 750W | 3.2 | 2.98 | 1.9 | 1.71 | 10.35 | 5.18 | 1400 | 1700 |

GEAR MOTOR SPECIFICATION

| Gear Ratio | 3 | | 5 | | 10 | | 15 | | 20 | | 25 | | 30 | | 40 | | 50 | | 60 | | 75 | | 90 | |
|----------------------------------|------|------|------|------|------|------|------|------|------|------|-------|------|-------|-------|-------|-------|-------|-------|-------|-------|-------|-------|-------|-------|
| | 50HZ | 60HZ | 50HZ | 60HZ | 50HZ | 60HZ | 50HZ | 60HZ | 50HZ | 60HZ | 50HZ | 60HZ | 50HZ | 60HZ | 50HZ | 60HZ | 50HZ | 60HZ | 50HZ | 60HZ | 50HZ | 60HZ | 50HZ | 60HZ |
| Output rpm | 500 | 600 | 300 | 360 | 150 | 180 | 100 | 120 | 75 | 90 | 60 | 72 | 50 | 60 | 37.5 | 45 | 30 | 36 | 25 | 30 | 20 | 24 | 16 | 20 |
| Output Torque (Kg.m) | 1.40 | 1.19 | 2.34 | 1.98 | 4.68 | 3.96 | 7.02 | 5.94 | 8.32 | 7.04 | 10.48 | 8.80 | 12.48 | 10.56 | 16.64 | 14.08 | 20.80 | 17.60 | 24.96 | 21.12 | 31.20 | 26.40 | 37.44 | 31.68 |
| Permissible Overhung Load* (Kgf) | 160 | 150 | 190 | 180 | 240 | 220 | 270 | 250 | 300 | 280 | 320 | 300 | 340 | 320 | 370 | 350 | 400 | 380 | 400 | 400 | 400 | 400 | 400 | 400 |

* Applied to the output shaft center.
 * (■) For light loading type.

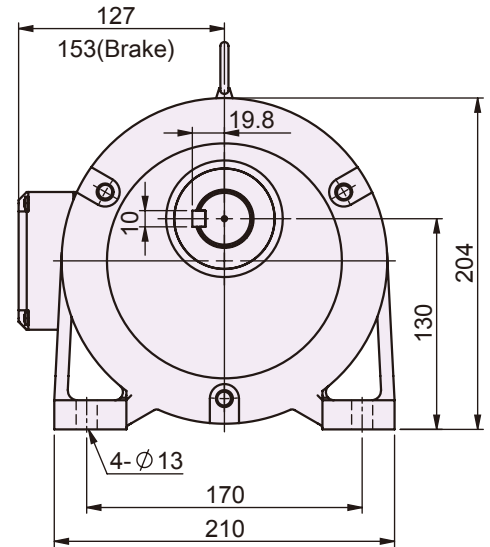
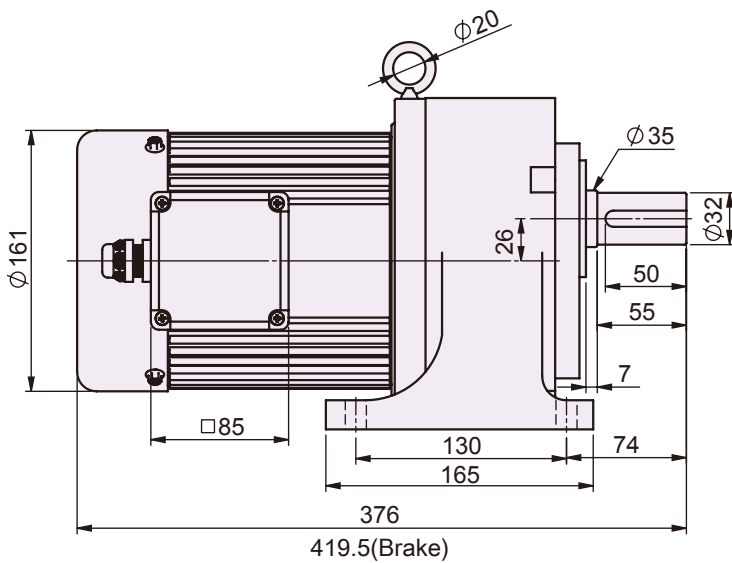
YTK CO.,LTD.
[Http://www.ytk-group.co.jp](http://www.ytk-group.co.jp)

100W V-Casing Types
 200W V-Casing Types
 400W V-Casing Types
 750W V-Casing Types
 1500W V-Casing Types
 2200W V-Casing Types
 100W Foot-Mount Types
 200W Foot-Mount Types
 400W Foot-Mount Types
 750W Foot-Mount Types
 1500W Foot-Mount Types
 2200W Foot-Mount Types

G14H-750W

SINGLE/3-PHASE FOOT-MOUNT TYPE PRECISION GEAR MOTOR

Terminal box position: at 270° for foot - mount type.



| KW | Full Load Current (Amp) | | | | | | | | | | | | | | | | Full Load Running (rpm) | | | | | |
|---------------------------------|-------------------------|-------|-------|-------|-------|-------|-------|-------|---------|-------|-------|-------|-------|-------|-------|-------|-------------------------|-------|-------|-------|-------|-------|
| | 3 Phase | | | | | | | | 1 Phase | | | | | | | | | | | | | |
| | 220V | | | | 380V | | | | 110V | | | | 220V | | | | | | | | | |
| | 50HZ | 60HZ | 50HZ | 60HZ | 50HZ | 60HZ | 50HZ | 60HZ | 60HZ | 60HZ | 60HZ | 60HZ | 50HZ | 60HZ | | | | | | | | |
| 750W | 3.2 | 2.98 | 1.9 | 1.71 | | | | | | | | | | | | | | | | 1400 | 1700 | |
| ◎ GEAR MOTOR SPECIFICATION | | | | | | | | | | | | | | | | | | | | | | |
| Gear Ratio | 30 | | 40 | | 50 | | 60 | | 75 | | 80 | | 90 | | 100 | | 120 | | 150 | | 180 | |
| | 50HZ | 60HZ | 50HZ | 60HZ | 50HZ | 60HZ | 50HZ | 60HZ | 50HZ | 60HZ | 50HZ | 60HZ | 50HZ | 60HZ | 50HZ | 60HZ | 50HZ | 60HZ | 50HZ | 60HZ | 50HZ | 60HZ |
| Output rpm | 50 | 60 | 37.5 | 45 | 30 | 36 | 25 | 30 | 20 | 24 | 19 | 22.5 | 16 | 20 | 15 | 18 | 12.5 | 15 | 10 | 12 | 8 | 10 |
| Output Torque (Kg.m) | 12.48 | 10.56 | 16.64 | 14.08 | 20.80 | 17.60 | 24.96 | 21.12 | 31.20 | 26.40 | 33.28 | 28.16 | 37.44 | 31.68 | 41.60 | 35.20 | 49.92 | 42.24 | 62.40 | 52.80 | 74.88 | 63.36 |
| Permissible Overhung Load* (Kg) | 390 | 370 | 430 | 410 | 470 | 440 | 470 | 470 | 470 | 470 | 470 | 470 | 470 | 470 | 470 | 470 | 470 | 470 | 470 | 470 | 470 | 470 |

* Applied to the output shaft center.

() For light loading type.

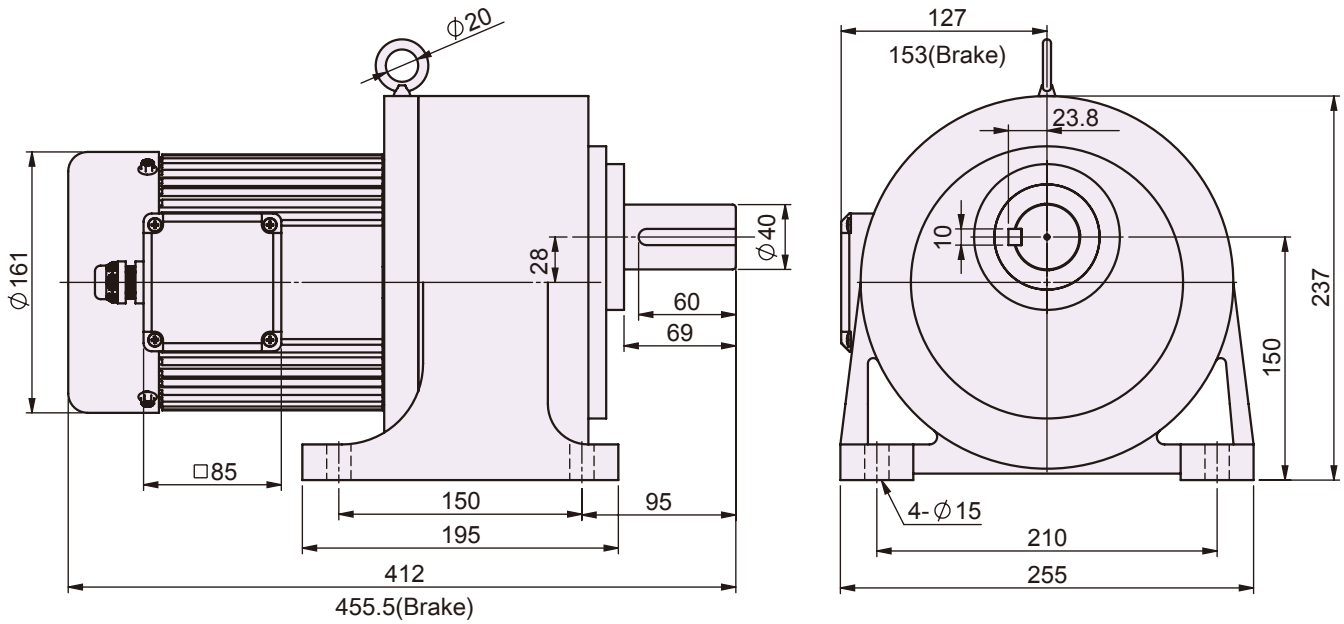
Products due to human error, natural disasters or other factors lead to poor or damaged, will not be covered under warranty.

YTK CO.,LTD.
[Http://www.ytk-group.co.jp](http://www.ytk-group.co.jp)

G15H-750W

SINGLE/3-PHASE FOOT-MOUNT TYPE PRECISION GEAR MOTOR

Terminal box position: at 270° for foot - mount type.



| KW | Full Load Current (Amp) | | | | | | Full Load Running (rpm) | | | |
|----------------------------------|-------------------------|-------|-------|-------|---------|-------|-------------------------|-------|-------|-------|
| | 3 Phase | | | | 1 Phase | | | | | |
| | 220V | | 380V | | 110V | 220V | 50HZ | 60HZ | | |
| | 50HZ | 60HZ | 50HZ | 60HZ | 60HZ | 60HZ | | | | |
| 750W | 3.2 | 2.98 | 1.9 | 1.71 | 10.35 | 5.18 | 1400 | 1700 | | |
| ◎ GEAR MOTOR SPECIFICATION | | | | | | | | | | |
| Gear Ratio | 80 | | 100 | | 120 | | 150 | | 200 | |
| | 50HZ | 60HZ | 50HZ | 60HZ | 50HZ | 60HZ | 50HZ | 60HZ | 50HZ | 60HZ |
| Output rpm | 19 | 22.5 | 15 | 18 | 12.5 | 15 | 10 | 12 | 7 | 9 |
| Output Torque (Kg.m) | 33.28 | 28.16 | 41.60 | 35.20 | 49.92 | 42.24 | 62.40 | 52.80 | 79.04 | 66.88 |
| Permissible Overhung Load* (Kgf) | 570 | 570 | 570 | 570 | 570 | 570 | 570 | 570 | 570 | 570 |

* Applied to the output shaft center.

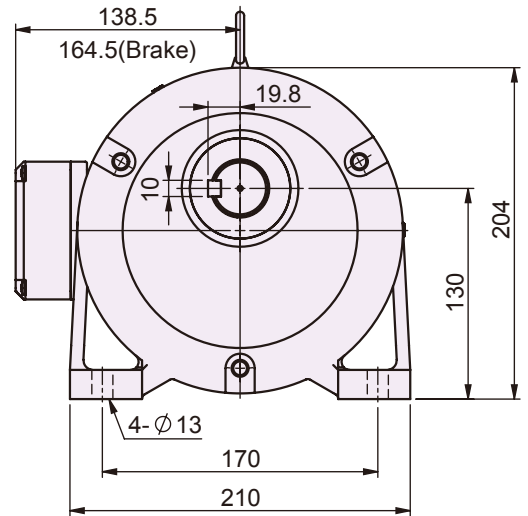
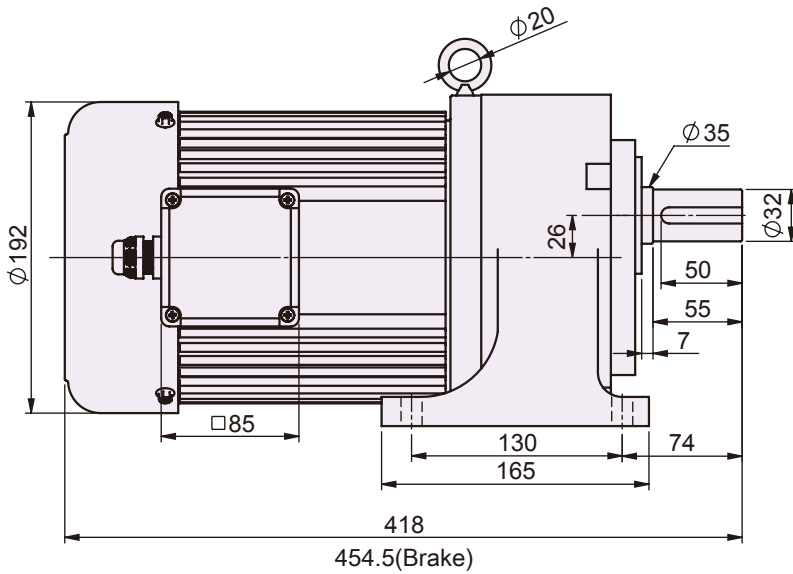
YTK CO.,LTD.
[Http://www.ytk-group.co.jp](http://www.ytk-group.co.jp)

100W V-Casting Types
 200W V-Casting Types
 400W V-Casting Types
 750W V-Casting Types
 1500W V-Casting Types
 2200W V-Casting Types
 100W Foot-Mount Types
 200W Foot-Mount Types
 400W Foot-Mount Types
 750W Foot-Mount Types
 1500W Foot-Mount Types
 2200W Foot-Mount Types

G14H-1500W

3-PHASE FOOT-MOUNT TYPE PRECISION GEAR MOTOR

Terminal box position: at 270° for foot - mount type.



| KW | Full Load Current (Amp) | | | | Full Load Running (rpm) | |
|-------|-------------------------|------|------|------|-------------------------|------|
| | 3 Phase | | | | | |
| | 220V | | 380V | | | |
| | 50HZ | 60HZ | 50HZ | 60HZ | 50HZ | 60HZ |
| 1500W | 5.9 | 5.6 | 3.4 | 3.2 | 1400 | 1700 |

⊙ GEAR MOTOR SPECIFICATION

| Gear Ratio | 3 | | 5 | | 10 | | 15 | | 20 | | 25 | | 30 | | 40 | | 50 | | 60 | |
|----------------------------------|------|------|------|------|------|------|-------|-------|-------|-------|-------|-------|------|-------|------|------|------|-------|------|-------|
| | 50HZ | 60HZ | 50HZ | 60HZ | 50HZ | 60HZ | 50HZ | 60HZ | 50HZ | 60HZ | 50HZ | 60HZ | 50HZ | 60HZ | 50HZ | 60HZ | 50HZ | 60HZ | 50HZ | 60HZ |
| Output rpm | 500 | 600 | 300 | 360 | 150 | 180 | 100 | 120 | 75 | 90 | 60 | 72 | 50 | 60 | 37.5 | 45 | 30 | 36 | 25 | 30 |
| Output Torque (Kg.m) | 2.75 | 2.27 | 4.59 | 3.78 | 9.18 | 7.57 | 13.77 | 11.35 | 18.36 | 15.13 | 20.25 | 16.69 | 24.3 | 20.03 | 32.4 | 26.7 | 40.5 | 33.38 | 48.6 | 40.05 |
| Permissible Overhung Load* (Kgf) | 180 | 170 | 220 | 200 | 270 | 260 | 310 | 290 | 340 | 320 | 370 | 350 | 390 | 370 | 430 | 410 | 470 | 440 | 470 | 470 |

* Applied to the output shaft center.

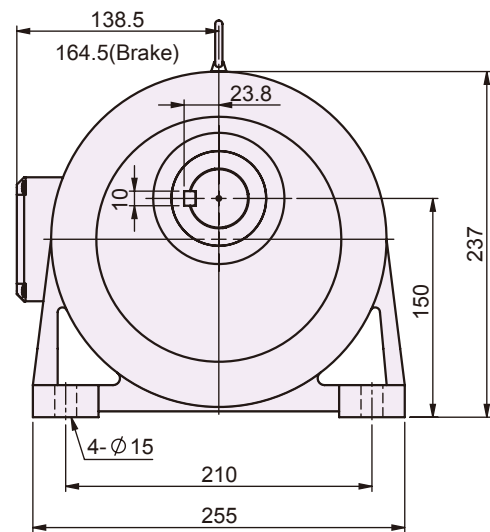
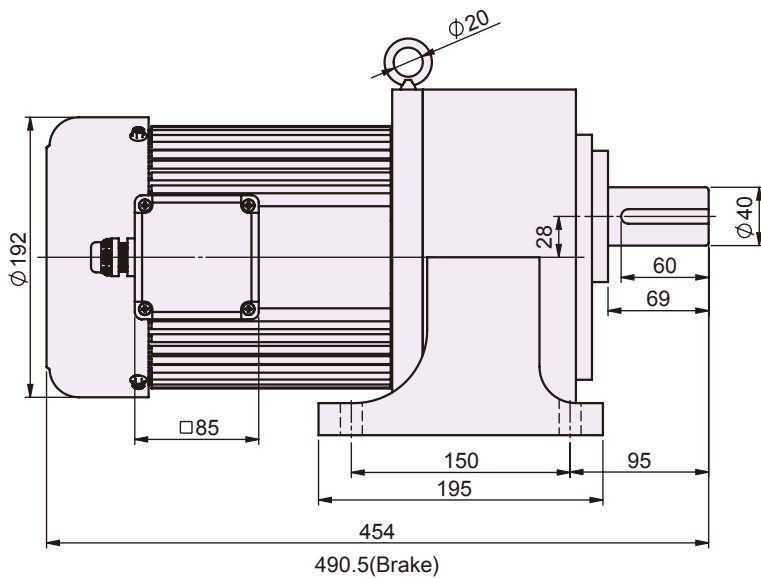
YTK CO.,LTD.
[Http://www.ytk-group.co.jp](http://www.ytk-group.co.jp)

Products due to human error, natural disasters or other factors lead to poor or damaged, will not be covered under warranty.

G15H-1500W

3-PHASE FOOT-MOUNT TYPE PRECISION GEAR MOTOR

Terminal box position: at 270° for foot - mount type.



| KW | Full Load Current (Amp) | | | | Full Load Running (rpm) | |
|-------|-------------------------|------|------|------|-------------------------|------|
| | 3 Phase | | | | | |
| | 220V | | 380V | | | |
| | 50HZ | 60HZ | 50HZ | 60HZ | 50HZ | 60HZ |
| 1500W | 5.9 | 5.6 | 3.4 | 3.2 | 1400 | 1700 |

| ◎ GEAR MOTOR SPECIFICATION | | | | | | | | | | |
|----------------------------------|------|-------|------|-------|-------|-------|-------|-------|------|-------|
| Gear Ratio | 50 | | 60 | | 75 | | 80 | | 90 | |
| | 50HZ | 60HZ | 50HZ | 60HZ | 50HZ | 60HZ | 50HZ | 60HZ | 50HZ | 60HZ |
| Output rpm | 30 | 36 | 25 | 30 | 20 | 24 | 19 | 22.5 | 16 | 20 |
| Output Torque (Kg.m) | 40.5 | 33.38 | 48.6 | 40.05 | 60.75 | 50.06 | 72.44 | 60.37 | 72.9 | 60.08 |
| Permissible Overhung Load* (Kgf) | 570 | 530 | 570 | 570 | 570 | 570 | 570 | 570 | 570 | 570 |

* Applied to the output shaft center.

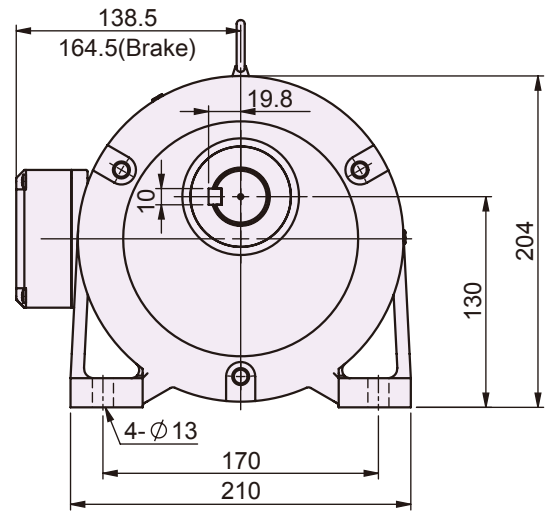
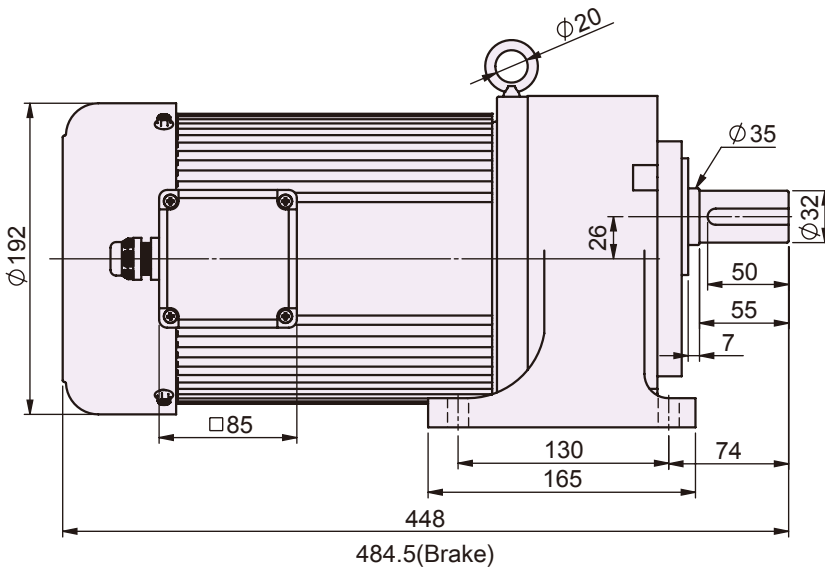
YTK CO.,LTD.
[Http://www.ytk-group.co.jp](http://www.ytk-group.co.jp)

100W V-Casing Types
 200W V-Casing Types
 400W V-Casing Types
 750W V-Casing Types
 1500W V-Casing Types
 2200W V-Casing Types
 100W Foot-Mount Types
 200W Foot-Mount Types
 400W Foot-Mount Types
 750W Foot-Mount Types
 1500W Foot-Mount Types
 2200W Foot-Mount Types

G14H-2200W

3-PHASE FOOT-MOUNT TYPE PRECISION GEAR MOTOR

Terminal box position: at 270° for foot - mount type.



| KW | Full Load Current (Amp) | | | | Full Load Running (rpm) | |
|-------|-------------------------|------|------|------|-------------------------|------|
| | 3 Phase | | | | | |
| | 220V | | 380V | | | |
| | 50HZ | 60HZ | 50HZ | 60HZ | 50HZ | 60HZ |
| 2200W | 8.88 | 8.09 | 5.09 | 4.71 | 1400 | 1700 |

⊙ GEAR MOTOR SPECIFICATION

| Gear Ratio | 3 | | 5 | | 10 | | 15 | | 20 | | 25 | | 30 | | 40 | |
|----------------------------------|------|------|------|------|-------|-------|-------|-------|-------|-------|-------|-------|-------|-------|-------|-------|
| | 50HZ | 60HZ | 50HZ | 60HZ | 50HZ | 60HZ | 50HZ | 60HZ | 50HZ | 60HZ | 50HZ | 60HZ | 50HZ | 60HZ | 50HZ | 60HZ |
| Output rpm | 500 | 600 | 300 | 360 | 150 | 180 | 100 | 120 | 75 | 90 | 60 | 72 | 50 | 60 | 37.5 | 45 |
| Output Torque (Kg.m) | 4.05 | 3.32 | 6.76 | 5.53 | 13.51 | 11.05 | 20.27 | 16.58 | 27.03 | 22.10 | 29.81 | 24.38 | 35.78 | 29.25 | 47.70 | 39.00 |
| Permissible Overhung Load* (Kgf) | 180 | 170 | 220 | 200 | 270 | 260 | 310 | 290 | 340 | 320 | 370 | 350 | 390 | 370 | 430 | 410 |

* Applied to the output shaft center.

(■) For light loading type.

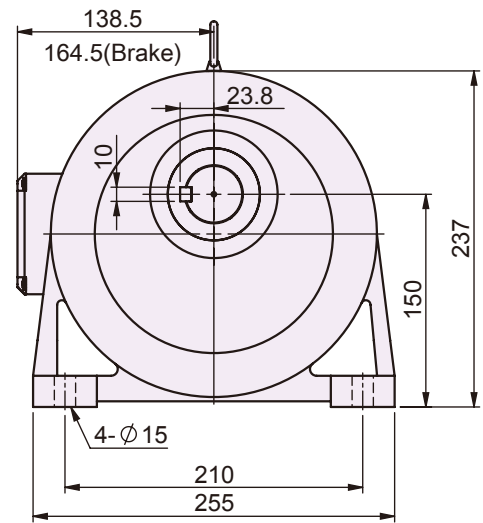
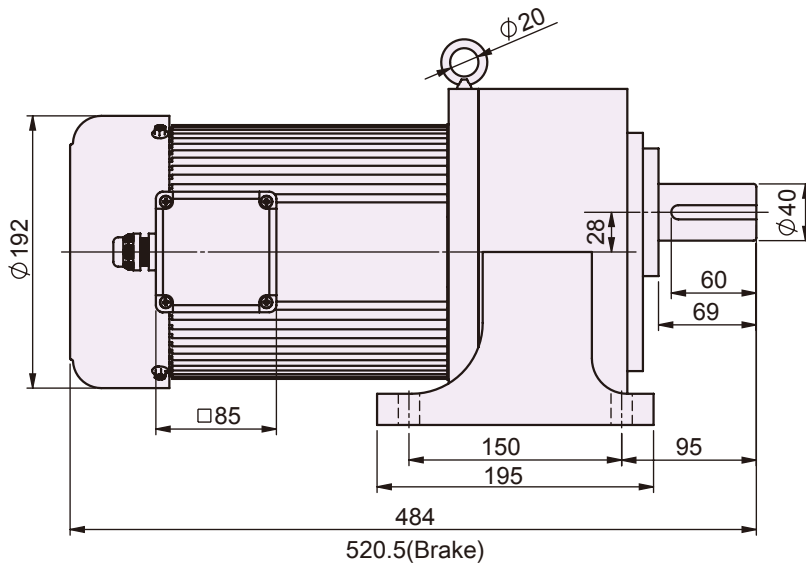
Products due to human error, natural disasters or other factors lead to poor or damaged, will not be covered under warranty.

YTK CO.,LTD.
Http://www.ytk-group.co.jp

G15H-2200W

3-PHASE FOOT-MOUNT TYPE PRECISION GEAR MOTOR

Terminal box position: at 270° for foot - mount type.



| KW | Full Load Current (Amp) | | | | Full Load Running (rpm) | |
|-------|-------------------------|------|------|------|-------------------------|------|
| | 3 Phase | | | | | |
| | 220V | | 380V | | 50HZ | 60HZ |
| | 50HZ | 60HZ | 50HZ | 60HZ | | |
| 2200W | 8.88 | 8.09 | 5.09 | 4.71 | 1400 | 1700 |

GEAR MOTOR SPECIFICATION

| Gear Ratio | 3 | | 5 | | 10 | | 15 | | 20 | | 25 | | 30 | | 40 | | 50 | | 60 | | 75 | | 80 | | 90 | | |
|----------------------------------|------|------|------|------|-------|-------|-------|-------|-------|------|-------|-------|-------|-------|------|------|-------|-------|-------|------|-------|------|--------|-------|--------|-------|-----|
| | 50HZ | 60HZ | 50HZ | 60HZ | 50HZ | 60HZ | 50HZ | 60HZ | 50HZ | 60HZ | 50HZ | 60HZ | 50HZ | 60HZ | 50HZ | 60HZ | 50HZ | 60HZ | 50HZ | 60HZ | 50HZ | 60HZ | 50HZ | 60HZ | 50HZ | 60HZ | |
| Output rpm | 500 | 600 | 300 | 360 | 150 | 180 | 100 | 120 | 75 | 90 | 60 | 72 | 50 | 60 | 37.5 | 45 | 30 | 36 | 25 | 30 | 20 | 24 | 19 | 22.5 | 16 | 20 | |
| Output Torque (Kg.m) | 4.05 | 3.32 | 6.76 | 5.53 | 13.51 | 11.05 | 20.27 | 16.58 | 27.03 | 22.1 | 29.81 | 24.38 | 35.78 | 29.25 | 47.7 | 39 | 50.24 | 41.62 | 79.68 | 66.4 | 99.61 | 83 | 106.25 | 88.54 | 119.53 | 99.61 | |
| Permissible Overhung Load* (Kgf) | 220 | 210 | 260 | 250 | 330 | 310 | 380 | 360 | 420 | 390 | 450 | 420 | 480 | 450 | 530 | 490 | 570 | 530 | 570 | 570 | 570 | 570 | 570 | 570 | 570 | 570 | 570 |

* Applied to the output shaft center.
 * () For light loading type.

YTK CO.,LTD.
[Http://www.ytk-group.co.jp](http://www.ytk-group.co.jp)

100W V-Casing Types
 200W V-Casing Types
 400W V-Casing Types
 750W V-Casing Types
 1500W V-Casing Types
 2200W V-Casing Types
 100W Foot-Mount Types
 200W Foot-Mount Types
 400W Foot-Mount Types
 750W Foot-Mount Types
 1500W Foot-Mount Types
 2200W Foot-Mount Types



SESAME MOTOR CORP.

599, Sec 1, Hemu Rd., Shengang, Taichung,
42953, Taiwan
TEL : +886-4-2561-0011
FAX : +886-4-2562-7766
www.sesamemotor.com
info@sesamemotor.com.tw
Skype Phone : sesame_motor

Copyright © 2018 Sesame Motor Corp.
All rights reserved



PRECISION GEAR MOTOR

V-CASING & FOOT-MOUNT TYPES

AGENT



V.3.1