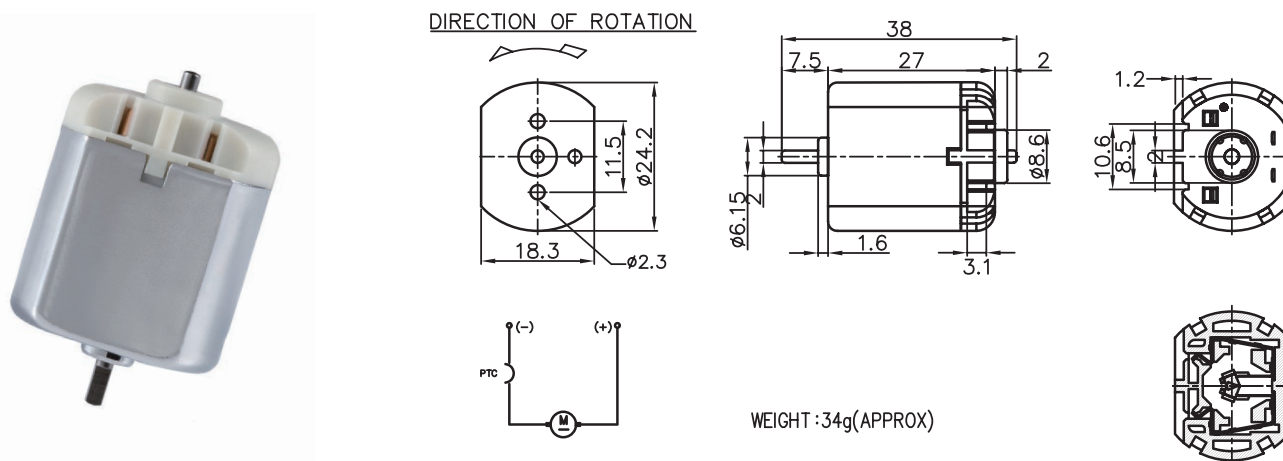


# DC-260

Carbon-brush motors

Application : Central Locks 、Rearview Mirror

用途：中控鎖、後視鏡鏡面調整



| MODEL             | VOLTAGE         |                | NO LOAD      |              | AT MAXIMUM EFFICIENCY |              |                |                |             |          | STALL        |                |                |
|-------------------|-----------------|----------------|--------------|--------------|-----------------------|--------------|----------------|----------------|-------------|----------|--------------|----------------|----------------|
|                   | OPERATING RANGE | NOMNAL         | SPEED<br>rpm | CURRENT<br>A | SPEED<br>rpm          | CURRENT<br>A | TORQUE<br>g-cm | TORQUE<br>mN-m | OUTPUT<br>W | EFF<br>% | CURRENT<br>A | TORQUE<br>g-cm | TORQUE<br>mN-m |
| DC-260S-19145-NR  | 6.0 - 12.0      | 8.4V CONSTANT  | 12000        | 0.13         | 9700                  | 0.72         | 38             | 3.73           | 3.83        | 64       | 3.45         | 218            | 21.37          |
| DC-260S-20140-NR  | 6.0 - 12.0      | 12.0V CONSTANT | 17800        | 0.18         | 13600                 | 1.39         | 60             | 5.88           | 8.50        | 52       | 5.11         | 267            | 26.18          |
| DC-260ST-12300-NR | 12.0 - 24.0     | 12.0V CONSTANT | 8000         | 0.06         | 6100                  | 0.26         | 23             | 2.25           | 1.46        | 46       | 0.94         | 113            | 11.08          |
| DC-260ST-16240-NR | 6.0 - 12.0      | 12.0V CONSTANT | 10000        | 0.09         | 8100                  | 0.43         | 35             | 3.43           | 2.94        | 57       | 1.89         | 184            | 18.04          |

馬達的出軸長度及性能參數，EMC 對策可依客人要求做調整，詳情可詢問相關業務人員。  
Please inquire your sales representative for output, performance and EMC solution.

