

# PNVF-90

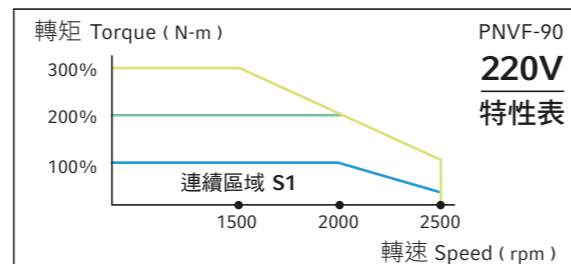
## SYNCHRONOUS SERVO MOTOR

### 同步伺服馬達

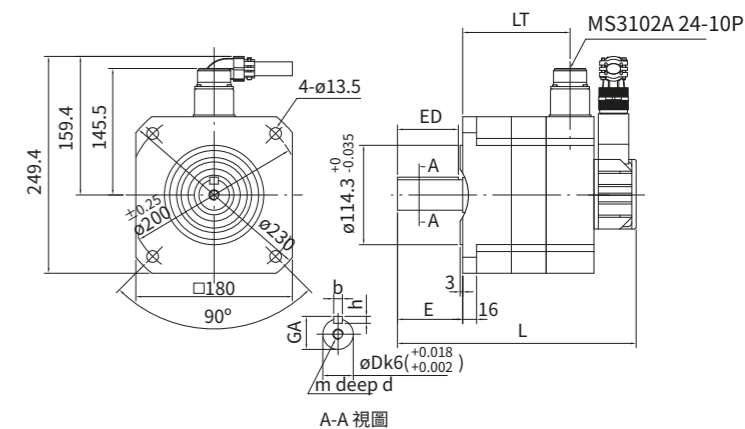
**220V** FUKUTA SYNCHRONOUS  
SERVO MOTOR

▶ 產品規格 Specification

框號 Frame No.	90S	90M	90L	90X
極數 Poles	8	8	8	8
轉動慣量 Rotor Inertia (kg·m <sup>2</sup> )	0.0035	0.0061	0.0078	0.0096



框號 Fr. No.	額定輸出 Rated Output	額定轉速 Rated Speed	額定電流 Rated Current	額定轉矩 Rated Torque	最大轉矩 Max. Torque	額定頻率 Rated Frequency	Ke(E.M.F) vRMS/1000rpm	轉矩常數 Kt	最高轉速 Max Speed	轉動慣量 Inertia	重量 Weight
	kw	RPM	A	Nm	Nm	Hz	Vrms	Nm/Arms	rpm	kg·m <sup>2</sup>	kg
90S	1	1000	3.4	9.6	28.7	66.7	175.0	2.8	2000	0.0035	16
	1.5	1500	5.1	9.6	28.7	100.0	115.0	1.9	2500	0.0035	16
	2	2000	6.8	9.6	28.7	133.3	85.0	1.4	3000	0.0035	16
	3	3000	10.2	9.6	28.7	200.0	55.0	0.9	4000	0.0035	16
90M	1.9	1000	6.3	17.8	53.5	66.7	175.0	2.8	2000	0.0061	29
	2.8	1500	9.5	17.8	53.5	100.0	115.0	1.9	2500	0.0061	29
	3.7	2000	12.5	17.8	53.5	133.3	85.0	1.4	3000	0.0061	29
	5.6	3000	19.0	17.8	53.5	200.0	55.0	0.9	4000	0.0061	29
90L	2.3	1000	7.7	21.7	65.1	66.7	175.0	2.8	2000	0.0078	37
	3.4	1500	11.5	21.7	65.1	100.0	115.0	1.9	2500	0.0078	37
	4.5	2000	15.2	21.7	65.1	133.3	85.0	1.4	3000	0.0078	37
	6.8	3000	23.0	21.7	65.1	200.0	55.0	0.9	4000	0.0078	37
90X	2.8	1000	9.2	26.3	78.9	66.7	175.0	2.9	2000	0.0096	45
	4.1	1500	13.8	26.3	78.9	100.0	115.0	1.9	2500	0.0096	45
	5.5	2000	18.5	26.3	78.9	133.3	85.0	1.4	3000	0.0096	45
	8.3	3000	27.6	26.3	78.9	200.0	55.0	1.0	4000	0.0096	45

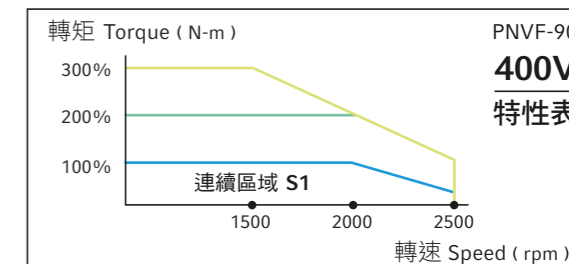


	D	bxh	mxh	GA	E	ED	L	LT
90S	35	10x8	M12x28	38	75	70	274.5	123.5
90M	35	10x8	M12x28	38	75	70	304.5	153.5
90L	35	10x8	M12x28	38	75	70	324.5	173.5
90X	42	12x8	M16x36	45	110	105	379.5	193.5

**400V** FUKUTA SYNCHRONOUS  
SERVO MOTOR

▶ 產品規格 Specification

框號 Frame No.	90S	90M	90L	90X
極數 Poles	8	8	8	8
轉動慣量 Rotor Inertia (kg·m <sup>2</sup> )	0.0035	0.0061	0.0078	0.0096



框號 Fr. No.	額定輸出 Rated Output	額定轉速 Rated Speed	額定電流 Rated Current	額定轉矩 Rated Torque	最大轉矩 Max. Torque	額定頻率 Rated Frequency	Ke(E.M.F) vRMS/1000rpm	轉矩常數 Kt	最高轉速 Max Speed	轉動慣量 Inertia	重量 Weight
	kw	RPM	A	Nm	Nm	Hz	Vrms	Nm/Arms	rpm	kg·m <sup>2</sup>	kg
90S	1	1000	2.1	9.6	28.7	66.7	300.0	4.5	2000	0.0035	16
	1.5	1500	3.2	9.6	28.7	100.0	200.0	3.0	2500	0.0035	16
	2	2000	4.1	9.6	28.7	133.3	150.0	2.3	3000	0.0035	16
	3	3000	6.4	9.6	28.7	200.0	100.0	1.5	4000	0.0035	16
90M	1.9	1000	3.7	17.8	53.5	66.7	300.0	4.8	2000	0.0061	29
	2.8	1500	5.6	17.8	53.5	100.0	200.0	3.2	2500	0.0061	29
	3.7	2000	7.5	17.8	53.5	133.3	150.0	2.4	3000	0.0061	29
	5.6	3000	11.2	17.8	53.5	200.0	100.0	1.6	4000	0.0061	29
90L	2.3	1000	4.7	21.7	65.1	66.7	300.0	4.6	2000	0.0078	37
	3.4	1500	7.0	21.7	65.1	100.0	200.0	3.1	2500	0.0078	37
	4.5	2000	9.3	21.7	65.1	133.3	150.0	2.3	3000	0.0078	37
	6.8	3000	14.1	21.7	65.1	200.0	100.0	1.5	4000	0.0078	37
90X	2.8	1000	5.6	26.3	78.9	66.7	300.0	4.7	2000	0.0096	45
	4.1	1500	8.4	26.3	78.9	100.0	200.0	3.1	2500	0.0096	45
	5.5	2000	11.0	26.3	78.9	133.3	150.0	2.4	3000	0.0096	45
	8.3	3000	16.8	26.3	78.9	200.0	100.0	1.6	4000	0.0096	45