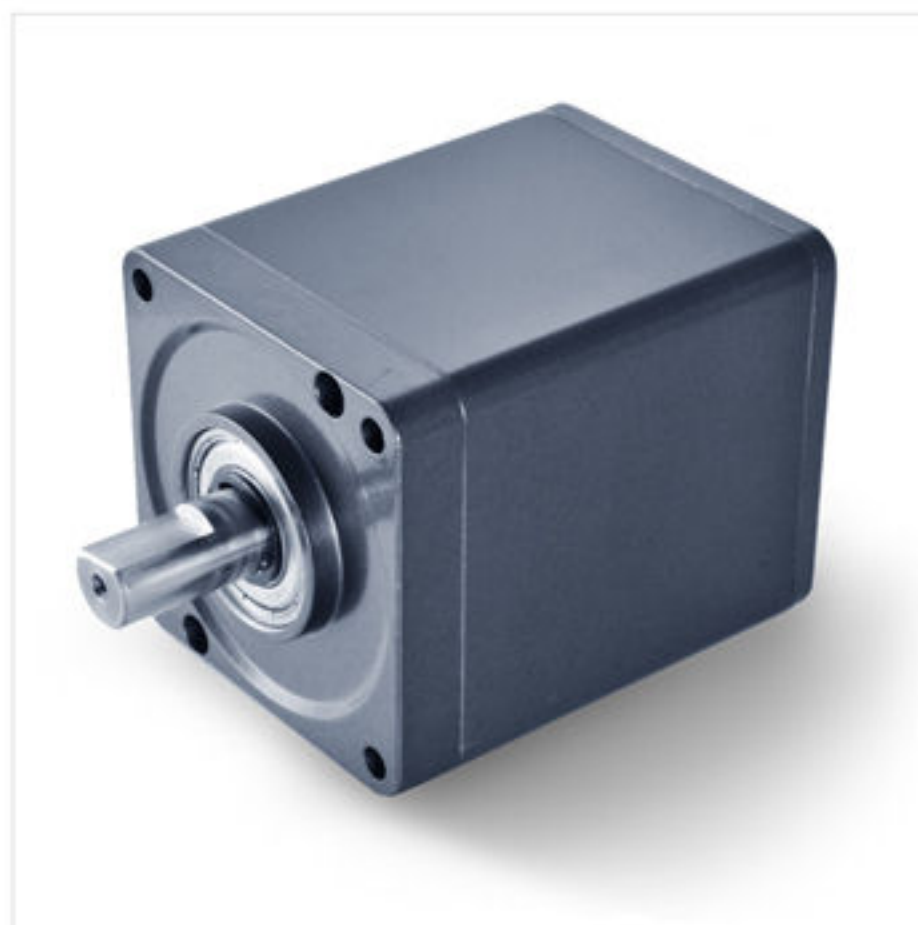


行星式齒輪箱 Planetary Gear



IG-60S

型式	行星式	Type	Planetary gear
外殼材質	金屬	Housing	metal
馬達搭配	DM-4522	Motor match	DM-4522
無負荷背隙	$\leq 3^\circ$	No load backlash	$\leq 3^\circ$
輸出軸承型式	滾珠軸承	Bearing at output	ball bearings
徑向負荷	$\leq 25 \text{ kg-f}$	Radial load	$\leq 25 \text{ kg-f}$
軸向負荷	$\leq 10 \text{ kg-f}$	Shaft axial load	$\leq 10 \text{ kg-f}$
主軸最大承受壓入力	$\leq 30 \text{ kg-f}$	Max shaft press fit force	$\leq 30 \text{ kg-f}$
徑向間隙	$\leq 0.08 \text{ mm}$	Radial play of shaft	$\leq 0.08 \text{ mm}$
軸向間隙	$\leq 0.4 \text{ mm}$	Thrust play of shaft	$\leq 0.4 \text{ mm}$
轉向	CW / CCW	Direction	CW / CCW
使用溫度 / 溼度	-15C~60C / RH85% ↓	Using temp. / humidity	-15C~60C / RH85% ↓
防護等級	IP545	Grade of protection	IP545
詳細尺寸	51頁	Size detail	Page.51

標準減速比型式 Gear Head Specifications

減速比 Reduction ratio	精確減速比 Exact reduction ratio	定格容許扭力 Rated tolerance torque	瞬間容許扭力 Max momentary tolerance torque	效率 Efficiency	L	重量 Weight(g)
1/3,1/4	3 1/2, 4 1/3	15 kgf-cm Max.	45 kgf-cm	80%	43.3	510
1/12,1/15	12 1/4, 15 1/6	50 kgf-cm Max.	150 kgf-cm	70%	58.8	730
1/9	18 7/9	50 kgf-cm Max.	150 kgf-cm	70%	58.8	730
1/43,1/53,1/66	42 7/8, 53 1/12, 65 13/18	100 kgf-cm Max.	300 kgf-cm	60%	74.3	980
1/81,1/100	81 10/27, 100 2/7	100 kgf-cm Max.	300 kgf-cm	60%	74.3	980
1/113	112 2/3	15 kgf-cm Max.	300 kgf-cm	60%	74.3	980
1/150	150 1/16	100 kgf-cm Max.	300 kgf-cm	50%	89.8	1210
1/230,1/285	230 1/36, 284 43/54	100 kgf-cm Max.	300 kgf-cm	50%	89.8	1210
1/353,1/488	352 49/81, 488 2/9	100 kgf-cm Max.	300 kgf-cm	50%	89.8	1210
1/546,1/676	546, 676	100 kgf-cm Max.	300 kgf-cm	50%	89.8	1210

IG行星齒輪箱尺寸圖 IG Planetary Gear Appearance Size

IG60-S

