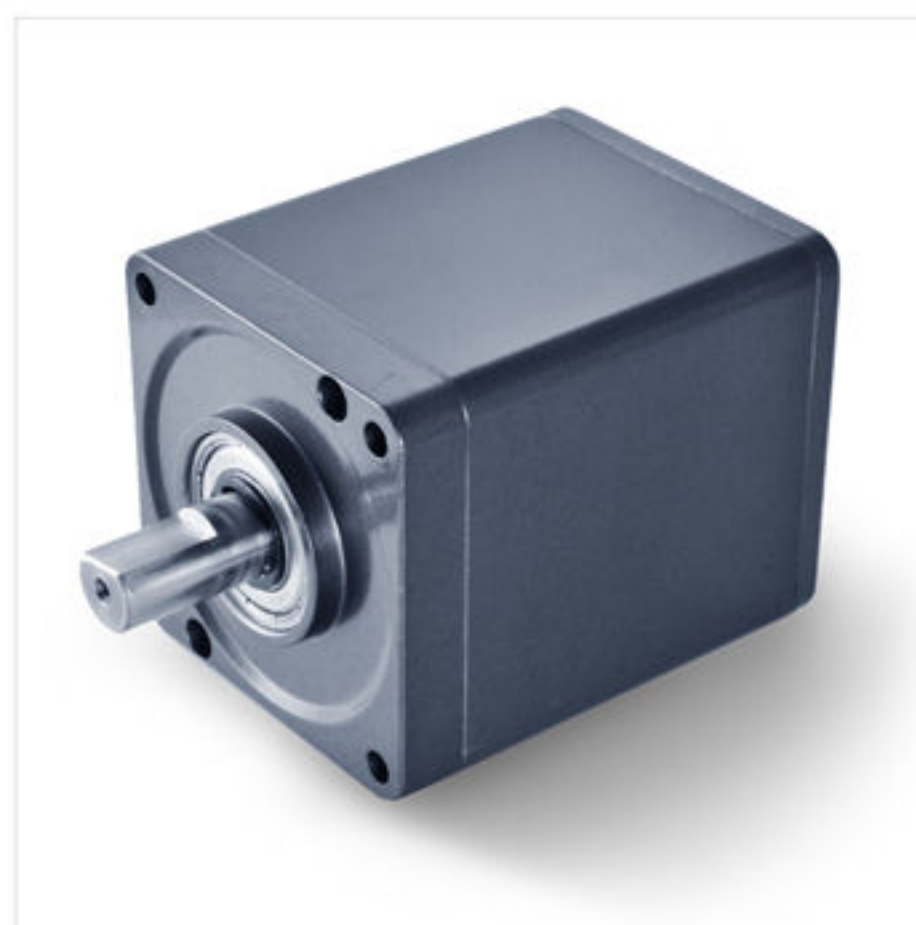


行星式齒輪箱 Planetary Gear



IG-80S

型式	行星式	Type	Planetary gear
外殼材質	金屬	Housing	metal
馬達搭配	DM-5230 / DM-5250	Motor match	DM-5230 / DM-5250
無負荷背隙	$\leq 3^\circ$	No load backlash	$\leq 3^\circ$
輸出軸承型式	滾珠軸承	Bearing at output	ball bearings
徑向負荷	$\leq 30 \text{ kg-f}$	Radial load	$\leq 30 \text{ kg-f}$
軸向負荷	$\leq 10 \text{ kg-f}$	Shaft axial load	$\leq 10 \text{ kg-f}$
主軸最大承受壓入力	$\leq 75 \text{ kg-f}$	Max shaft press fit force	$\leq 75 \text{ kg-f}$
徑向間隙	$\leq 0.08 \text{ mm}$	Radial play of shaft	$\leq 0.08 \text{ mm}$
軸向間隙	$\leq 0.4 \text{ mm}$	Thrust play of shaft	$\leq 0.4 \text{ mm}$
轉向	CW / CCW	Direction	CW / CCW
使用溫度 / 溼度	-15C~60C / RH85% ↓	Using temp. / humidity	-15C~60C / RH85% ↓
防護等級	IP545	Grade of protection	IP545
詳細尺寸	51頁	Size detail	Page.51

標準減速比型式 Gear Head Specifications

減速比 Reduction ratio	精確減速比 Exact reduction ratio	定格容許扭力 Rated tolerance torque	瞬間容許扭力 Max momentary tolerance torque	效率 Efficiency	L	重量 Weight(g)
1/4	3 17/21	15 kgf-cm Max.	45 kgf-cm	80%	49.3	1100
1/13,1/15	12 4/5 , 14 226/441	70 kgf-cm Max.	210 kgf-cm	70%	65.8	1579
1/19,1/21	18 198/325 , 21 9/91	70 kgf-cm Max.	210 kgf-cm	70%	65.8	1570
1/49,1/55	48 16/21 , 55 2645/9261	125 kgf-cm Max.	375 kgf-cm	60%	82.3	2040
1/71,1/80	70 58/65 , 80 240/637	125 kgf-cm Max.	375 kgf-cm	60%	82.3	2040
1/103,1/117	103 281/4225 , 116 1012/1183	125 kgf-cm Max.	375 kgf-cm	50%	82.3	2040
1/186,1/210	186 335/441 , 116 1012/1183	150 kgf-cm Max.	450 kgf-cm	50%	98.8	2510
1/306,1/393	306 2638/13377 , 392 536/845	150 kgf-cm Max.	450 kgf-cm	50%	98.8	2510
1/445,1/571	445 1355/8281 , 570 45582/54925	150 kgf-cm Max.	450 kgf-cm	50%	98.8	2510
1/647	647 3067/15379	150 kgf-cm Max.	450 kgf-cm	50%	98.8	2510

IG行星齒輪箱尺寸圖 IG Planetary Gear Appearance Size

IG80-S

