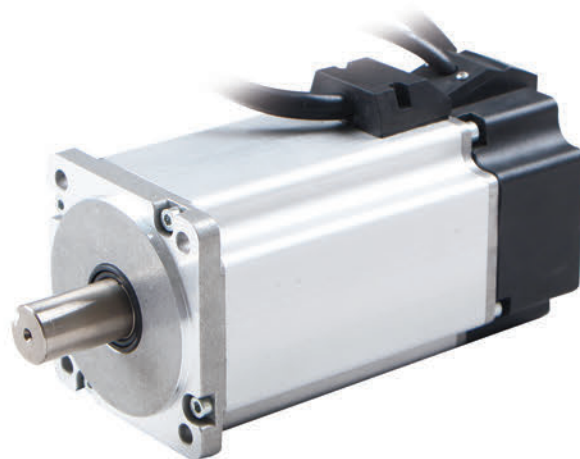
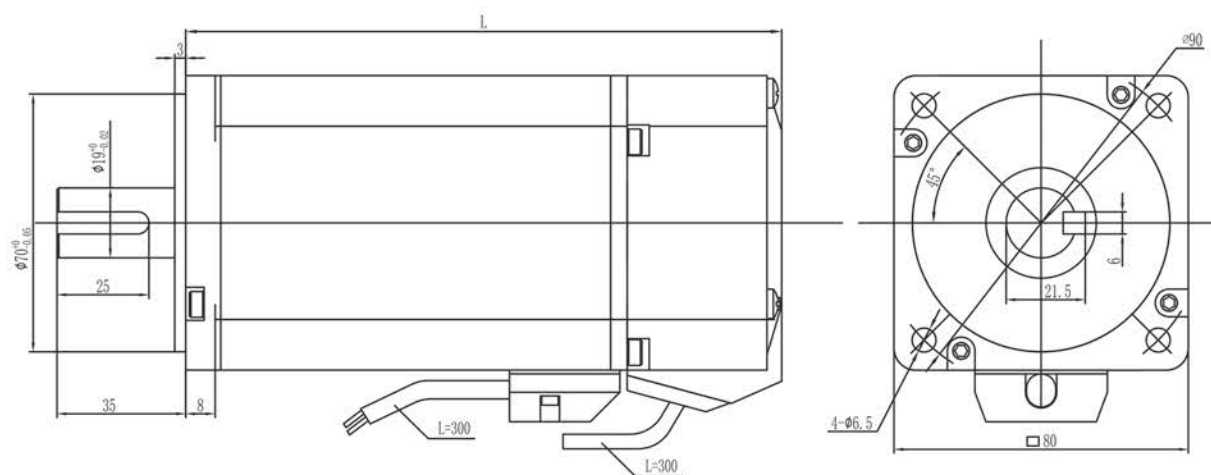


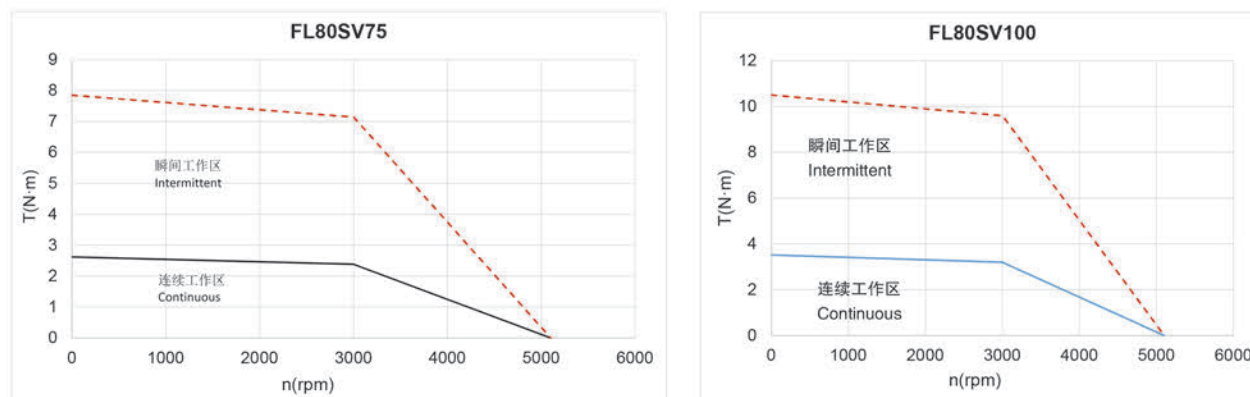
标准伺服电机 Standard Servo Motor



机械尺寸 (Dimension)



性能曲线 (Performance Curve)



接线说明 (Electric Connection)

序号 No.	引出线颜色 Lead Color	引出线型号 Lead Gauge	功能 Function	说明 Description
1	黄色(Yellow)	Cable AWG16/14	U相(Phase U)	
2	红色(Red)		V相(Phase V)	
3	黑色(Black)		W相(Phase W)	

编码器接线定义请向富兴机电公司咨询  
Please ask for the encoder connection from FULLING MOTOR company

一般技术特性 (General Technical Information)

编码器类型 (Encoder type)	1、光电编码器 Optical encoder 2、磁编码器 Magnetic encoder 3、旋转变压器 Resolver 备注：多种分辨率可选，增量式、绝对值式可选。 Note: Multiple resolutions are available ; Incremental or absolute encoders are optional.		
径向负载 (Max radial force)	392N @ 20mm from the flange	环境条件 Environmental conditions	使用环境温度：-20°C~+40°C ; Temperature: -20°C~+40°C 使用环境湿度：≤90%RH (无凝露) ; Relative humidity: ≤90%RH(No dewing) 安装环境：远离腐蚀、可燃性气体，油滴，灰尘，海拔≤1000m(1000~4000m，降额使用) ; Installation environment: Far away active gas, Combustible gas, oil drop, ash. altitudes≤1000m(1000~4000m, Derating use) ; 存储环境：-20°C~+60°C, ≤85%RH (无凝露) ; Storage Condition: -20°C~+60°C, ≤85%RH(No dewing).
轴向负载 (Max axial force)	147N		
绝缘等级 (Insulation Class)	Class B		
防护等级 (Protection level)	IP65		

电机技术性能 (Motor Technical Specification)

类型 (Model)	单位(Unit)	FL80SV75	FL80SV100
额定功率(Rated power) $P_n$	W	750	1000
额定电压(Rated voltage) $U$	VDC	48	48
额定转速(Rated speed) $n_n$	RPM	3000	3000
额定转矩(Rated torque) $T_n$	N·m	2.38	3.2
额定电流(Rated current) $I_n$	A	22.2	30
最大转速(Maximum speed) $n_{max}$	RPM	5100	5100
最大转矩(Maximum torque) $T_m$	N·m	7.14	9.6
最大电流(Maximum current) $I_m$	A	66.6	90
电阻(Line to line resistance) $R_L$	$\Omega$	0.05	0.034
电感(Line to line inductance) $L_L$	mH	0.28	0.16
反电势系数(Back EMF) $K_e$	V/Krpm	6.5	6.5
转矩系数(Torque constant) $K_t$	Nm/A	0.107	0.107
电气时间常数(Electrical time constant) $\tau_e$	ms	5.6	4.7
机械时间常数 (Mechanical time constant) $\tau_m$	ms	0.93	0.86
转动惯量(Rotor inertia) $J_{m0}$	kg·cm <sup>2</sup>	1.24	1.7
转动惯量带制动器(Rotor inertia with brake) $J_{m1}$	kg·cm <sup>2</sup>	1.34	1.8
极数(Number of poles)		8	8
编码器(Encoder)		2500ppr 光电编码器 (增量式) 2500p/rev incremental encoder	
机身长度(Motor length) $L1$	mm	142	162
机身长度带制动器(Motor length with brake) $L2$	mm	182	202
重量 (Weight)	Kg	2.9	3.2
重量带制动器(Weight with brake)	Kg	3.7	4

该款电机可以根据客户需求定制。  
The motor can be designed & manufactured with customized request.