

NEW-FLOW

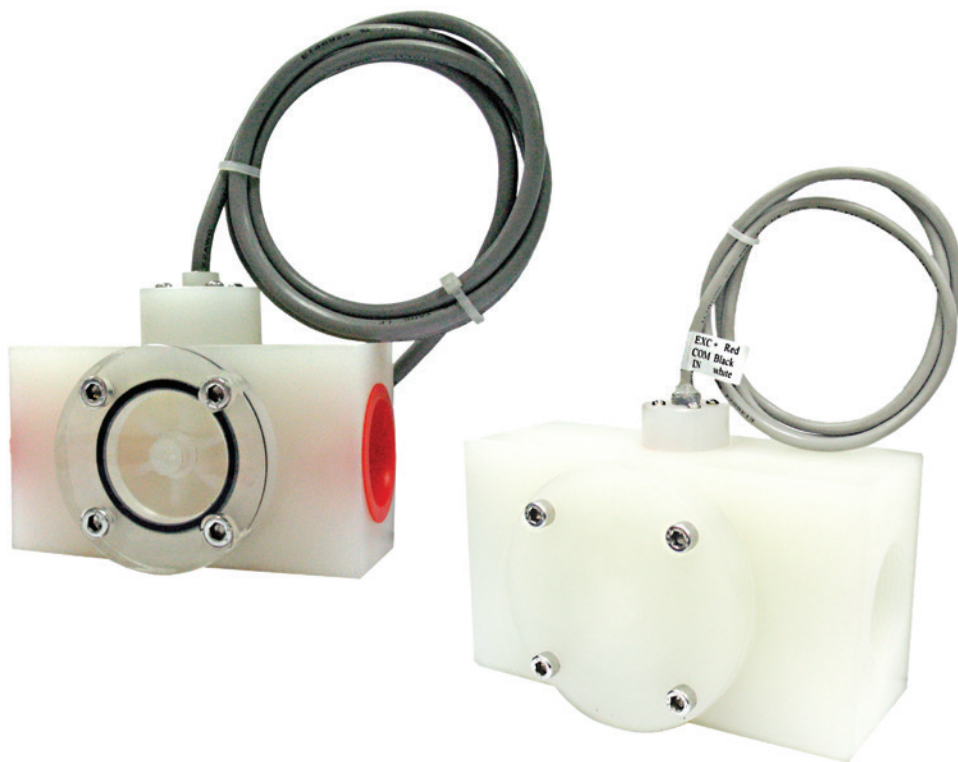
**ISO 9001
REGISTERED**

NEW-FLOW

MANUFACTURE OF PADDLE WHEEL LIQUID FLOW METER
HF100 / HF200 SERIES
AND CONTROL INSTRUMENTS

翼輪式流量計操作說明書

Instruction Manual



NEW-FLOW TECHNOLOGIES, INC.

No.9 Lane 133, Xing-Hua St., Chien Chen Dist., Kaohsiung 806, Taiwan

TEL: 886-7-8135500 FAX: 886-7-8225588 / 8159758

Email: info@new-flow.com www.new-flow.com

TABLE OF CONTENTS

1.0	Wire Diagram	page 1
2.0	Mounting Position & Set	page 2

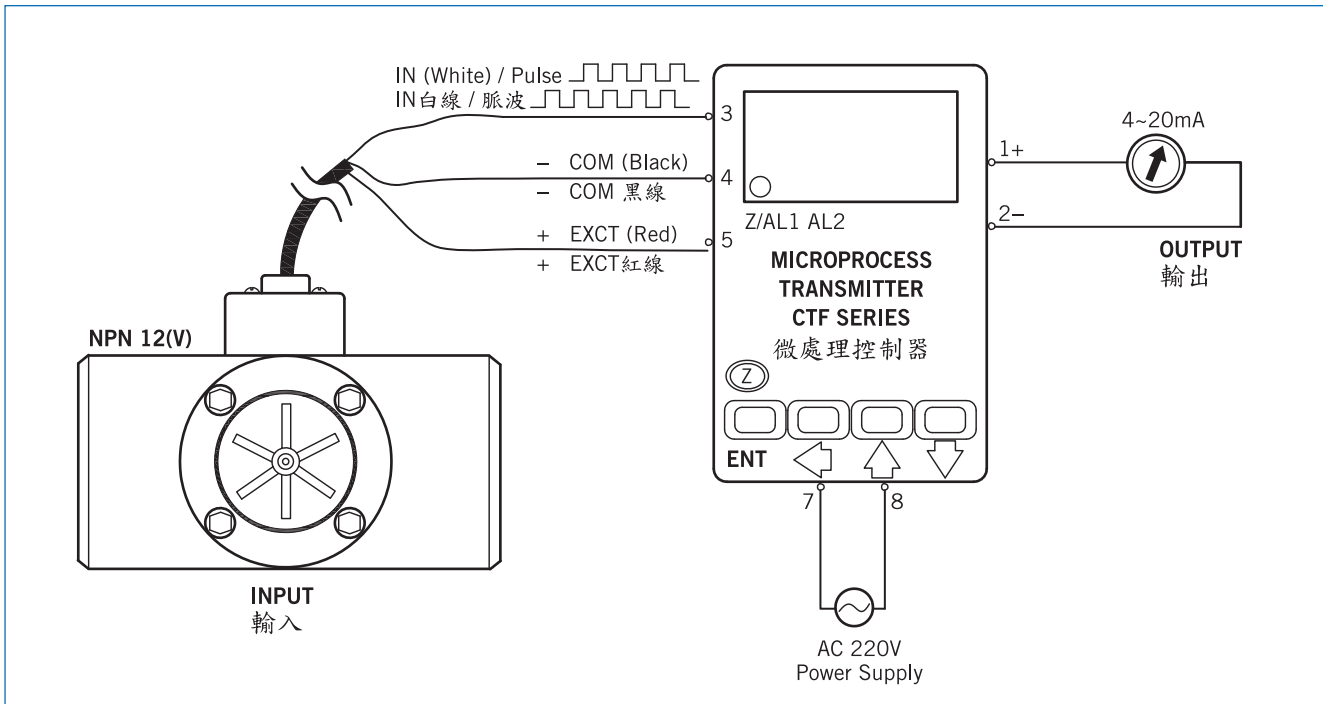
TEL: 886-7-8135500 FAX: 886-7-8225588
e-mail: info@new-flow.com
<http://www.new-flow.com>
Instruction No.: 20151014-0-hf100hf200



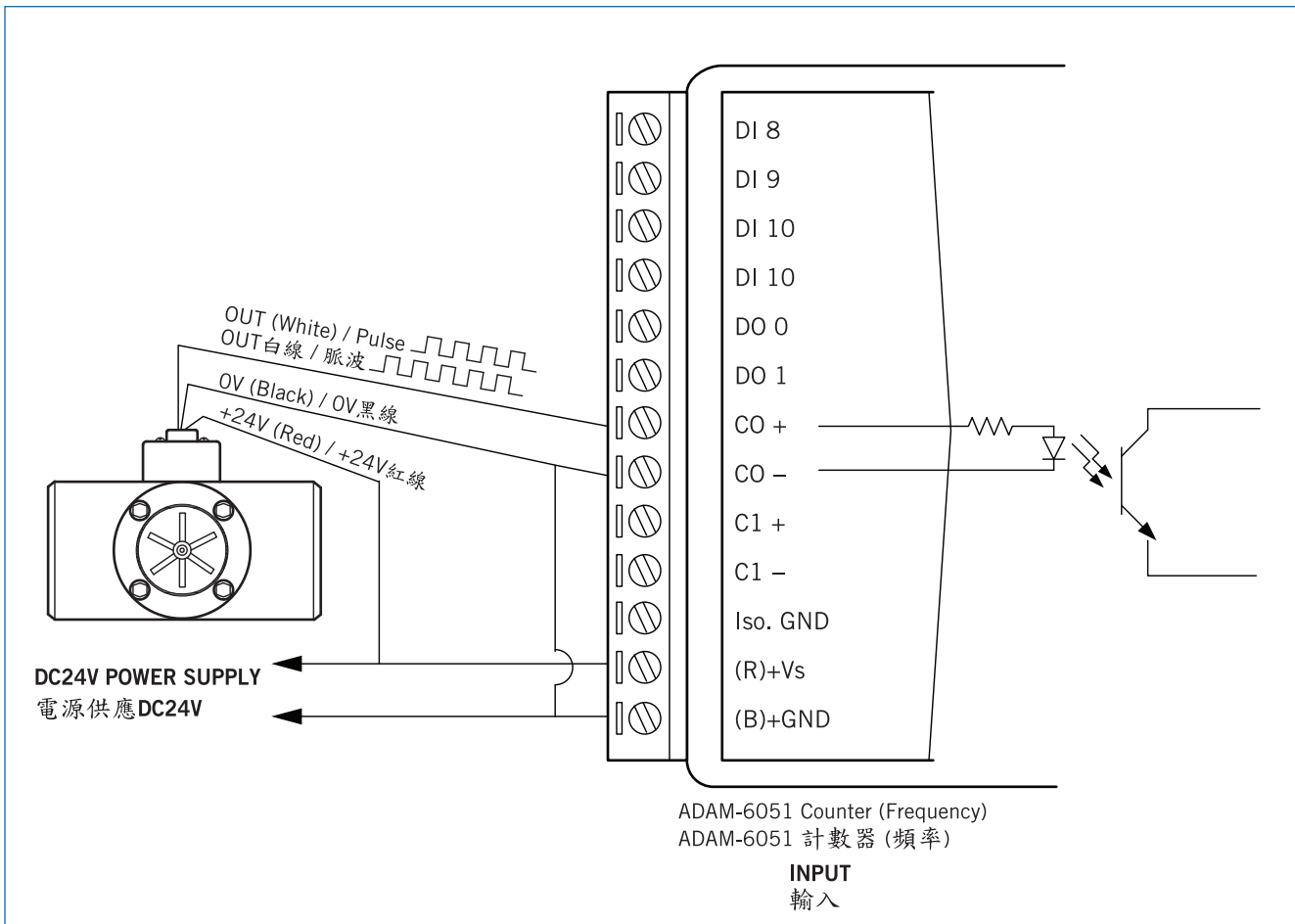
1.0 WIRE DIAGRAM

Wiring Diagram 接線圖

MICROPROCESS TRANSMITTER / 微處理控制器:

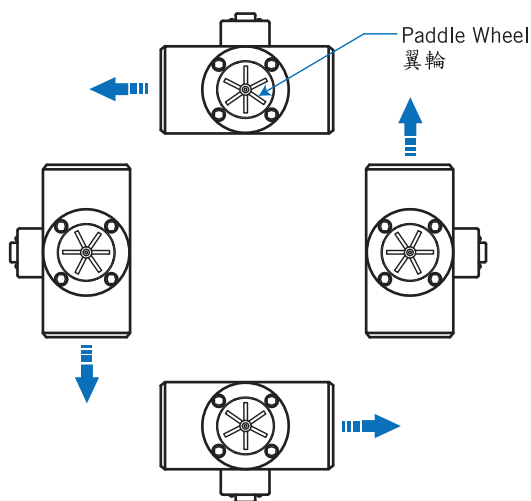


ADAM-6051 Counter (Frequency) Input / ADAM-6051 計數器(頻率)輸入:



2.0 MOUNTING POSITION & SET

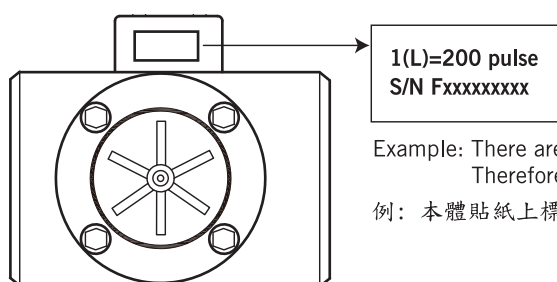
Mounting Position 安裝方向



Warning

Paddle wheel required shall be perpendicular to the horizontal line, it can not be parallel to the horizontal line.
翼輪式流量計必需垂直於水平線，無法與水平線平行。

Set the Value of K 設定 K 值



Example: There are the words on body stickers 1(L)=200 pulse
Therefore, K=200 (K values are different for each meter)

例：本體貼紙上標示1(L)=200 pulse，即表示K=200 (K值隨不同本體而改變)

Set the Time and the Unit on the Controller to Know the “Flow”

在控制器上設定時間及單位即可得知“流量”