



**ISO 9001
REGISTERED**

NEW-FLOW

MANUFACTURE OF ORIFICE PLATE

Instruction Manual



NEW-FLOW TECHNOLOGIES, INC.

No.9 Lane 133, Xing-Hua St., Chien Chen Dist., Kaohsiung 806, Taiwan

TEL: 886-7-8135500 FAX: 886-7-8225588 / 8159758

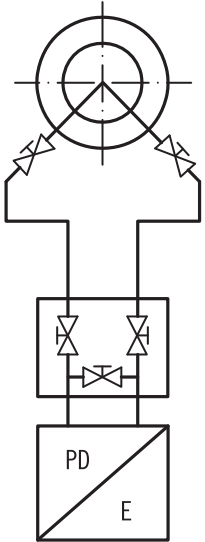
Email: info@new-flow.com www.new-flow.com

INSTALLATION

Orifice / Nozzle / Venturi Tube Installed Guide

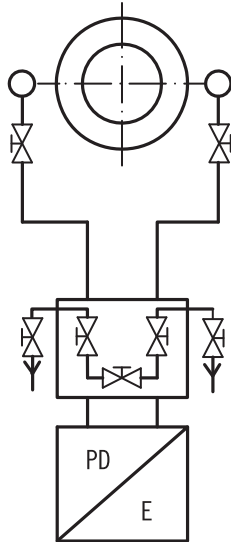
Liquid

DP-Flow Element
With 3-way manifold.



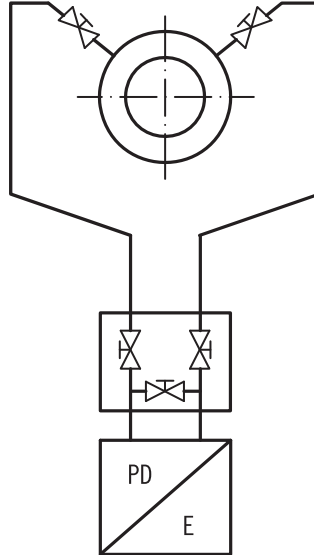
Steam

DP-Flow Element
With 5-way manifold and
condense pots



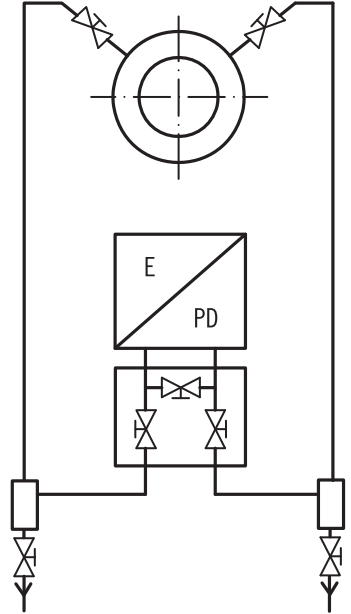
Dry Gas

DP-Flow Element
With 3-way manifold



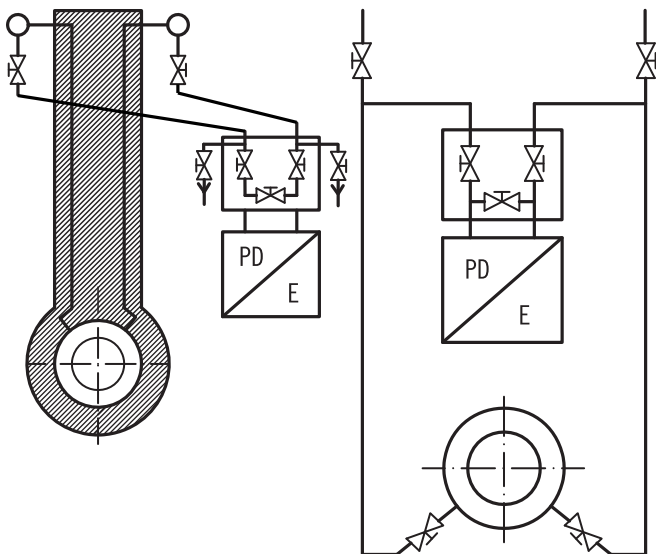
Humid Gas

DP-Flow Element
With 3-way manifold and
drain pot



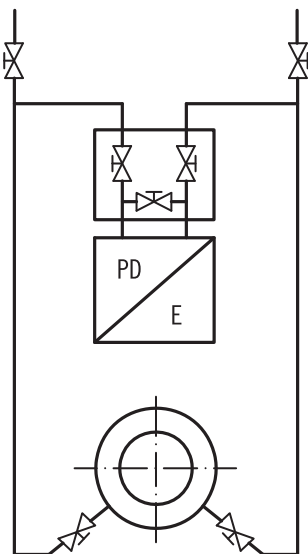
Steam

DP-Flow Element on
top mounting
With condense pots



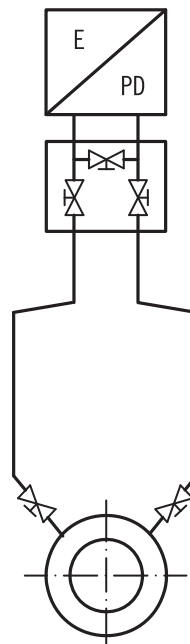
Liquid

DP-Flow Element on
top mounting
With 3-way manifold and
vent valves



Gas, dry and humid

DP-Flow Element on
top mounting
With 3-way manifold



Gaseous Fluid

DP-Flow Element on
top mounting
With 3-way manifold and
vent pots

