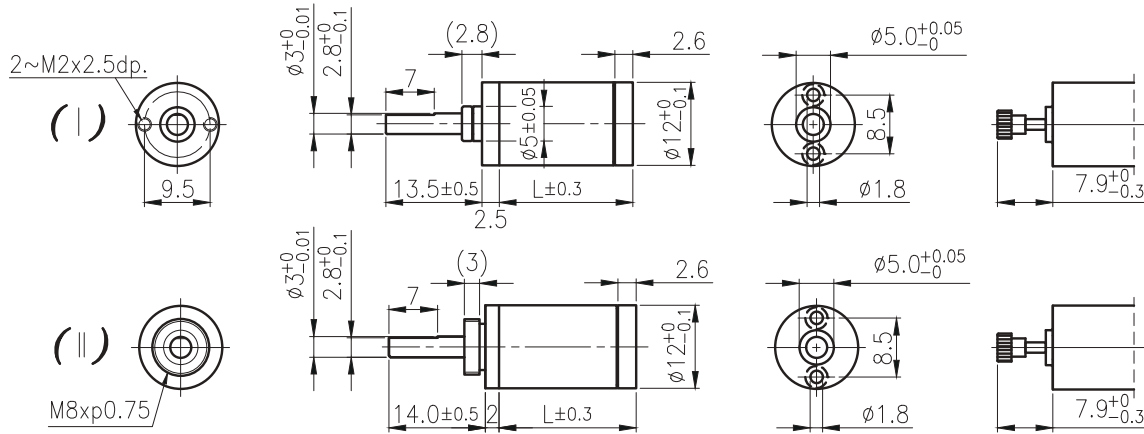


IG-12



外形尺寸 & 馬達齒鑲合方法 / Appearance Size & Pinion Assembly Dimension



unit:mm

產品規格 / Product Specifications

| 外殼材質 Housing material | 輸出軸承型式 Bearing at output | 徑向負荷 Radial load (5mm from flange) | 軸向負荷 Shaft axial load | 主軸最大承受壓入力 Shaft press fit force, max. | 徑向間隙 Radial play of shaft | 軸向間隙 Thrust play of shaft | 背隙 (無負荷時) Backlash, at no-load |
|--------------------------|-----------------------------|---------------------------------------|--------------------------|--|------------------------------|------------------------------|-----------------------------------|
| 金屬 Metal | 含油軸承 Sleeve bearings | ≤ 0.5 kgf | ≤ 0.5 kgf | ≤ 1.5 kgf | ≤ 0.05 mm | ≤ 0.2 mm | ≤ 3° |

馬達齒輪型式 / Pinion Specifications

| 模數 Module | 齒數 No. of teeth | 壓力角 Pressure angle | 孔徑 (mm) Hole diameter | 減速比 Reduction ratio |
|--------------|--------------------|-----------------------|--------------------------|------------------------|
| 0.25 | 12 | 20° | ∅ 1.49 | 全種通用 Practicable |

標準減速比型式 / Gearboxes Specifications

| 減速比 Reduction ratio | 1/4 | 1/16 | 1/64 | 1/256 | 1/1024 | 1/4096 |
|---|------|------|------|-------|--------|--------|
| 定格容許扭力 (kgf-cm Max.) Rated tolerance torque | 0.8 | 1.2 | 1.6 | 1.8 | 2 | 2 |
| 瞬間容許扭力 (kgf-cm) Max momentary tolerance torque | 2.4 | 3.6 | 4.8 | 5.4 | 6 | 6 |
| 效率 Efficiency | 85% | 75% | 65% | 55% | 45% | 40% |
| 長度 Length (L) | 12.8 | 16.1 | 19.4 | 22.7 | 26 | 29.3 |
| 重量 (I) Weight (g) | 12.1 | 14.2 | 16.3 | 18.4 | 20.5 | 22.6 |
| 重量 (II) Weight (g) | 12.6 | 14.7 | 16.8 | 18.9 | 21 | 23.1 |

- 使用相對溼度：20%~85%RH
Operating relative humidity
- 使用溫度範圍：-10℃~+60℃
Operating temperature range