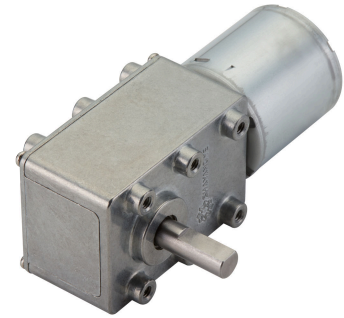


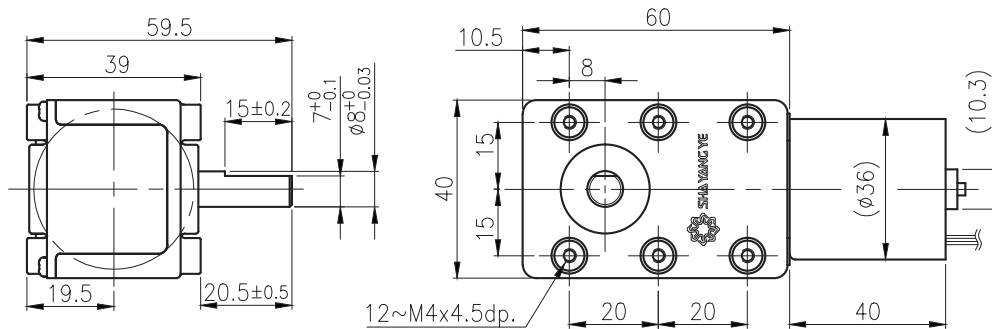
# WG-40GM

## 41 & 42 TYPE



外形尺寸 / Appearance Size

可選擇單出軸或者雙出軸 / Single output or dual output shaft both are available



unit:mm

齒輪箱馬達轉矩 & 速度 / Gear Motor Torque & Speed

減速比 Reduction ratio		1/50	1/75	1/100	1/150	1/200	1/350	1/600	1/700	1/1050
12V	定格扭力 Rated torque (kg-cm)	2	3	4	6	8	10	20	20	20
	定格轉數 Rated speed (rpm)	40	26.7	20	13.3	10	5.7	3.3	2.8	1.9
24V	定格扭力 Rated torque (kg-cm)	2.5	3.7	5	7.5	10	10	20	20	20
	定格轉數 Rated speed (rpm)	78	52	39	26	19.5	11.1	6.5	5.6	3.7
軸心迴轉方向 Rotation direction		CW/CCW								

馬達單體型式 / Motor Data

定格電壓 Rated volt (V)	定格扭力 Rated torque (g-cm)	定格轉數 Rated speed (rpm)	定格電流 Rated current (A)	無負荷轉數 No load speed (rpm)	無負荷電流 No load current (A)	定格出力 Rated output (W)	重量 Weight (g)
12	200	2000	≤1.0	2800	≤0.35	4.1	145
24	250	3900	≤1.23	5000	≤0.4	10	145

馬達單體特性 / Motor Characteristics

