

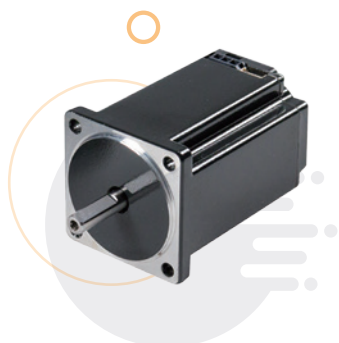
# Brushless

## BL42 Series specification of motor



### BL42S

額定電壓 Rated Voltage	24VDC
額定功率 Rated Power	15W
額定轉矩 Rated Torque	0.5kg-cm
額定相電流 Rated Phase Current	1.1A
額定轉速 Rated Speed	3000RPM
槽極數配合 Slot-Pole	4 極 6 槽 (4P6S)
防護等級 Degree of Protection	IP54



### BL42M

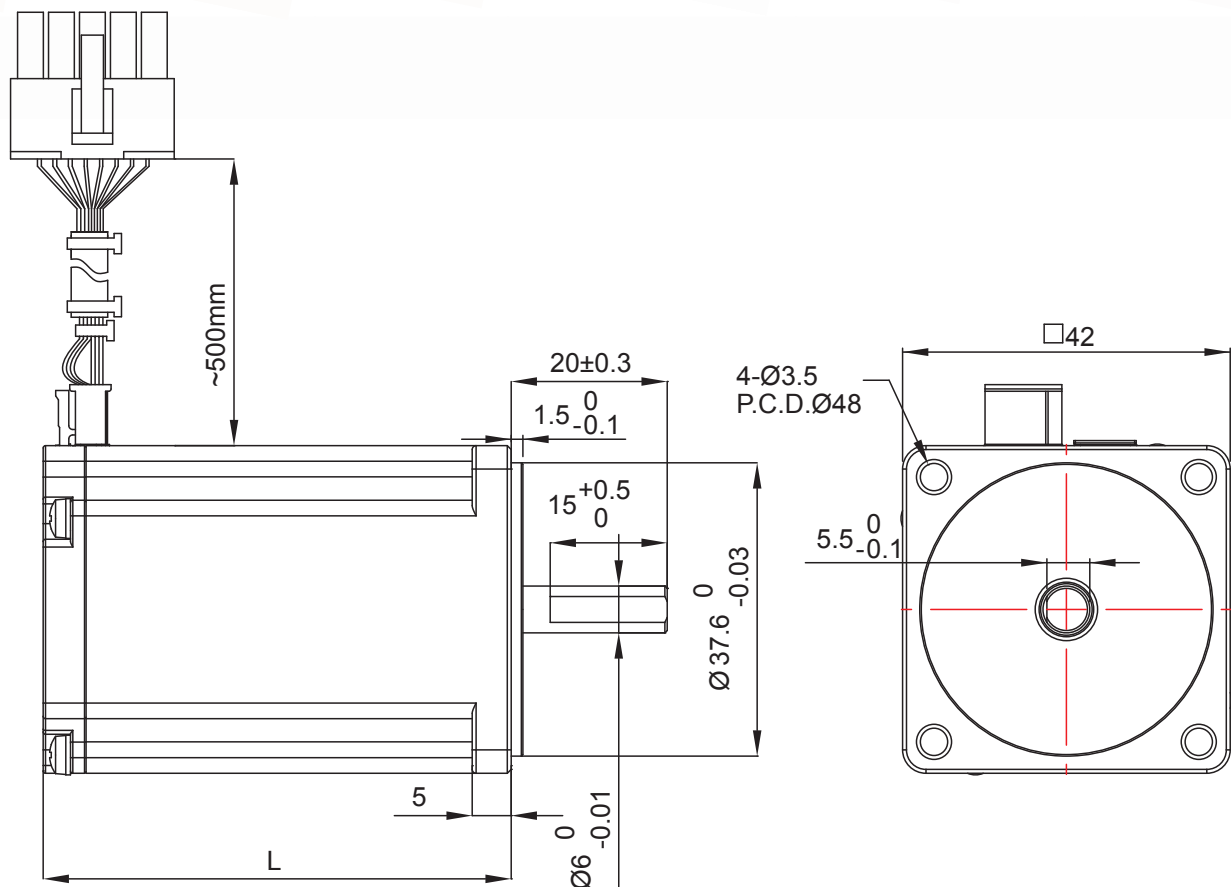
額定電壓 Rated Voltage	24VDC
額定功率 Rated Power	30W
額定轉矩 Rated Torque	1.0kg-cm
額定相電流 Rated Phase Current	1.9A
額定轉速 Rated Speed	3000RPM
槽極數配合 Slot-Pole	4 極 6 槽 (4P6S)
防護等級 Degree of Protection	IP54

Please contact the salesman if customer have other motor request such as motor shaft, speed or voltage.

特殊規格及其他需求請洽詢業務人員

## Brushless

### BL42 Series outline dimension drawing



#### 馬達 Motor

機種 (Model)	長度 (Length) L
BL42S	45mm
BL42M	60mm



Please contact the salesman if customer have other motor request such as motor shaft, speed or voltage.

特殊規格及其他需求請洽詢業務人員