

NEW-FLOW

**ISO 9001
REGISTERED**

NEW-FLOW

HORIZONTAL MAGNETIC LEVEL SWITCH

Explosion Proof Type

LXT207

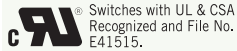
Instruction Manual



Approvals:



TD0400TJ
工電(2015)第00091號



Switches with UL & CSA
Recognized and File No.
E41515.

NEW-FLOW TECHNOLOGIES, INC.

No.9 Lane 133, Xing-Hua St., Chien Chen Dist., Kaohsiung 806, Taiwan

TEL: 886-7-8135500 FAX: 886-7-8225588 / 8159758

Email: info@new-flow.com www.new-flow.com

TABLE OF CONTENTS

1.0 Caution	page 1
2.0 Description	page 2
3.0 Wiring Drawing	page 3
4.0 Test Device	page 4
5.0 Operating Information.....	page 5
6.0 Notice.....	page 6

TEL: 886-7-8135500 FAX: 886-7-8225588
e-mail: info@new-flow.com
<http://www.new-flow.com>
Instruction No.: 20171101-lxt207-00



1.0 CAUTION

Safety Instructions



Before installation, commissioning and operation the user must ensure that the appropriate level switch is selected, with regard to scale range and performance and the appropriate wetted material (corrosion) for the respective application's specific measuring conditions.

- In order to guarantee the accuracy and long-term stability specified, the corresponding load limits must be observed.
- Only qualified personnel, authorized by the plant manager, should be permitted to install, maintain and service the pressure switch.
- Hazardous pressure media (such as Oxygen, Acetylene, flammable gases or liquids, toxic gases or liquids), as well as refrigeration plants or compressors, may require attention beyond that of the standard regulations. In these instances, the appropriate specific safety codes or regulations must be considered.
- After an external fire, all switch must be checked and if necessary, replaced before recommissioning the plant.
- Serious injury and/or damage can occur should the appropriate regulations not be observed.

2.0 DESCRIPTION

LXT207 float-operated with test device level switches are suitable for controlling liquid level at horizontal mounting. The float equipped with an extended arm moves a couple magnetic mechanism to actuate a micro-switch to offer an ON-OFF contact for application.

Technical Data

Enclosure Housing: Explosion proof; IP68

Process Connection: 1½"~4" Flange type, or 1½"~3" Thread type

Flange Rating: JIS, ANSI, DIN available

Thread Rating: NPT, option available

Material: Wetted parts & Housing are in 316 stainless steel

Temperature Limits:

-20°C~+150°C: LXT-207-1, LXT-207-3, LXT-207-5

-20°C~+200°C or -20°C~+350°C: LXT-207-2, LXT-207-4

Pressure Limits: 3.0 MPa (30 kg/cm²), option: up to 4.5 MPa

Switch Function: Micro switch 1 x SPDT or 2 x SPDT available

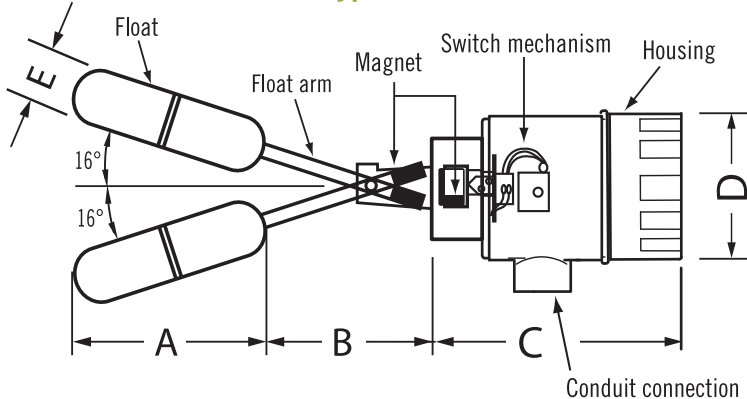
Switch Rating: 3A/250VAC, 5A/125VAC, 4A/30VDC

Conduit Connection Size: ½" NPT female, option available

Float Working Specific Gravity: 0.7 (option: less than 0.7 available on request)

Dimensions

Model: LXT207-1 (Thread Type)



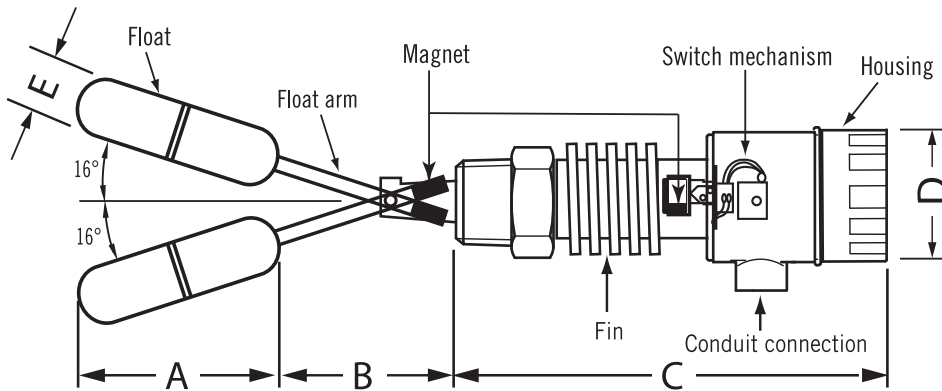
	A	B	C	D	E
mm	150	92	115	64	40

NOTE.

1. Special dimensions on request.
2. Extension length for B is available.

2.0 DESCRIPTION

Model: LXT207-2 (Thread Type c/w Fin)

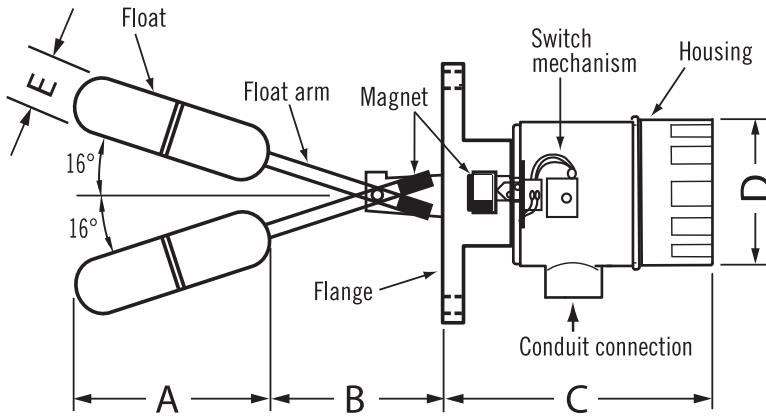


	A	B	C	D	E
mm	150	92	185 Approx.	64	40

NOTE.

1. Special dimensions on request.
2. Extension length for **B** is available.

Model: LXT207-3 (Flange Type)

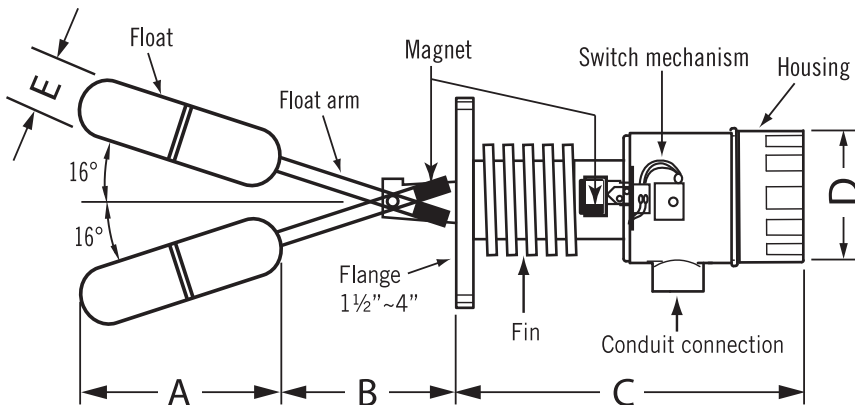


A	B	C	D	E
150	92	115 Approx.	64	40

NOTE.

1. Special dimensions on request.
2. Extension length for **B** is available.

Model: LXT207-4 (Flange Type c/w Fin)



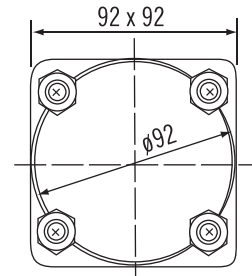
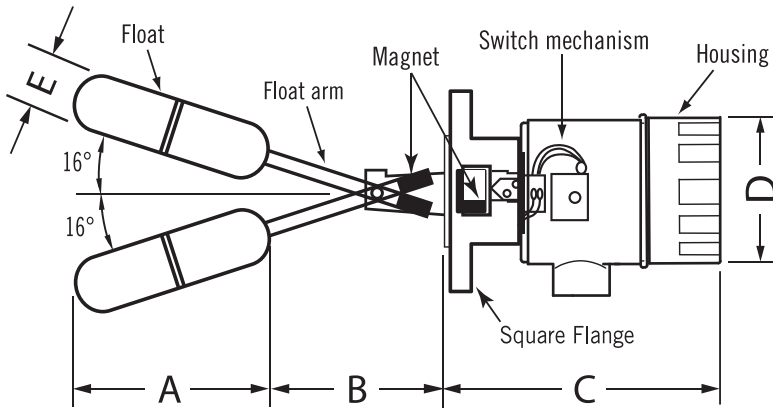
A	B	C	D	E
150	92	185 Approx.	64	40

NOTE.

1. Special dimensions on request.
2. Extension length for **B** is available.

3.0 WIRING DRAWING

Model: LXT207-5 (Square Flange Type)

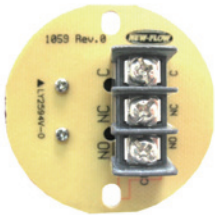


Square Flange

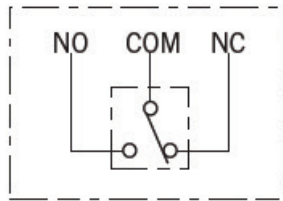
A	B	C	D	E
150	92	115 Approx.	64	40

NOTE.
 1. Special dimensions on request.
 2. Extension length for **B** is available.

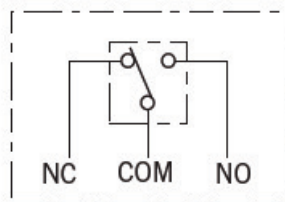
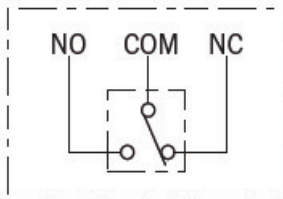
Wiring Drawing



1 SPDT



2 SPDT



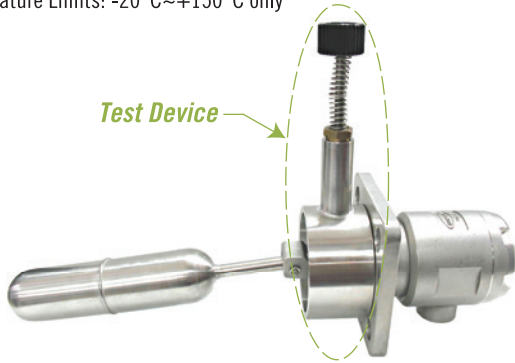
4.0 TEST DEVICE FOR LXT207-5

Added Test Device Accessories

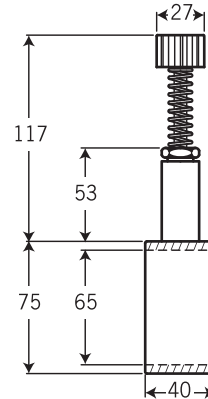
unit=mm (Tolerance: ±1.0mm)

•Test Device Type•

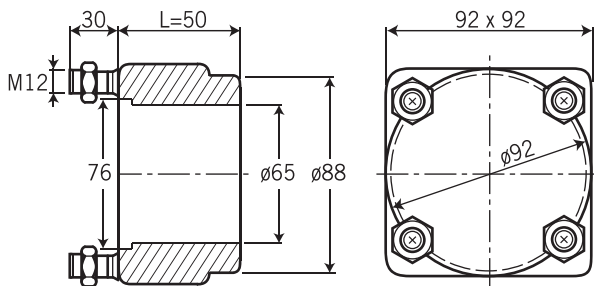
Temperature Limits: -20°C~+150°C only



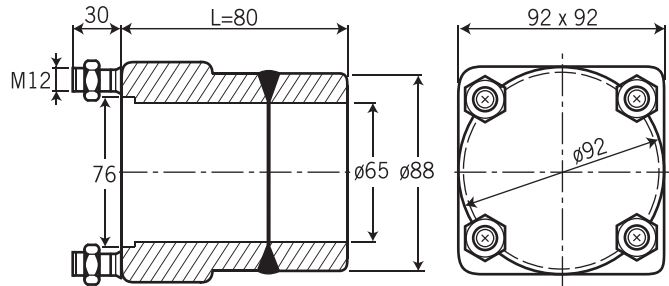
(A) Pipe With Standard Test Device



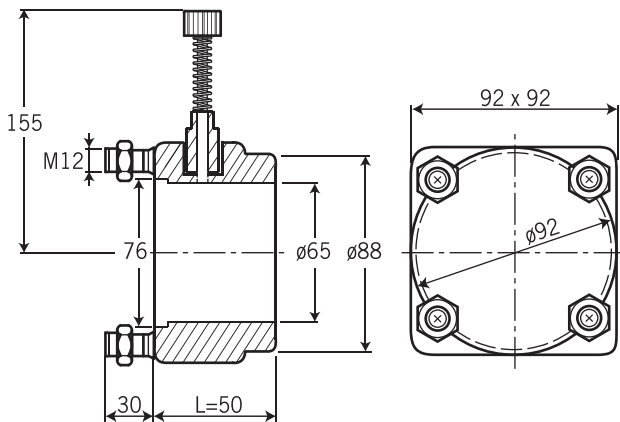
(B) Added Flange Device



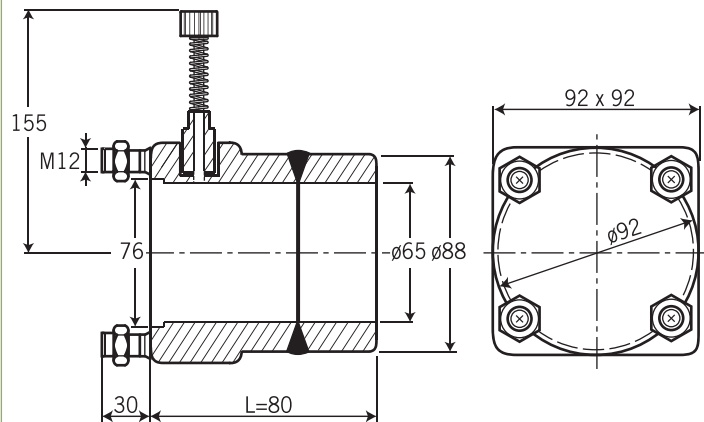
(C) Added Flange Device



(D) Added Flange with Test Device



(E) Added Flange with Test Device



5.0 OPERATING INFORMATION

Permissible Ambient and Working Temperature

When installing the pressure switch it must be ensured that, taking into account the influence of convection and heat radiation, the temperature does not exceed or drop below the permissible limits for the ambient and medium temperatures.

The influence of temperature on the class accuracy should also be taken into account.

Storage

The pressure switch should be kept in its original packing until installation. The switch should be protected from external damage during storage.

Storage temperature : -20°C ~ +40°C

Pressure switch should be protected from dust and humidity.

Transport

The switch should be protected against the effects of knocks and impacts. The device should only be transported in the packaging provided. The device should only be transported in a clean condition.

The delivery must be checked for completeness and damage during transport. In the event of damage during transport, the delivery must not be accepted, or only accepted subject to reservation of the scope of the damage being recorded and, if necessary, a complaint initiated.

Servicing

Be sure that the case is closed at all times.

When the switch is exposed to process media that may harden and/or build up in the pressure port, the switch should be removed and cleaned as needed. However, to ensure reliable operation and a long lifetime for the device, we recommend that it is checked regularly.

When undertaking servicing work on the device, the pressure lines must be depressurized, the electrical connections isolated from the mains supply, and the plant secured against being switched on again.

The check on function and recalibration is carried out at regular intervals, depending on the application. The precise testing cycles should be adjusted in line with the operating conditions and ambient conditions. In the event of various device components interacting, the operating instructions for all other devices should also be taken into account.

- Check on function, in conjunction with down stream components.
- Check of pressurized connection pipes for seal condition.
- Check of electrical connections.

6.0 NOTICE

Maintenance

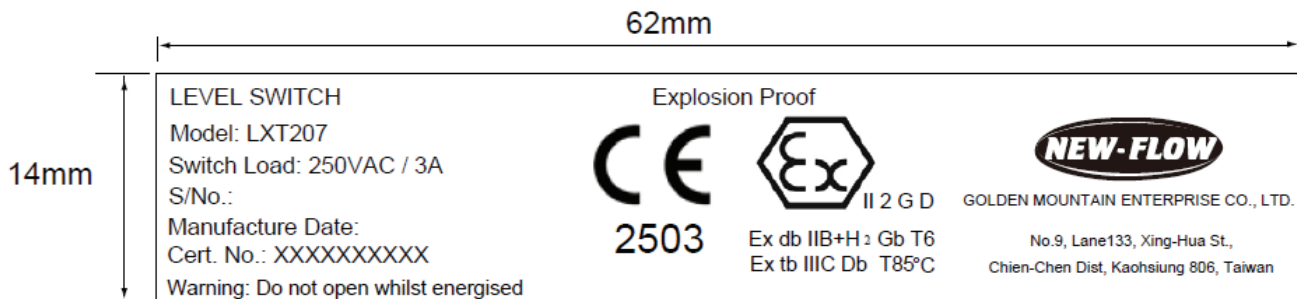
- Never use aggressive solvents.
- Do not use high-pressure water to clean the switch.

Removal, Disposal

Residues of measuring media in and on removed switches can constitute a risk to people, the environment and equipment. Adequate precautionary measures must be adopted. If necessary, the devices must be cleaned thoroughly.

Labeling on the Device

The label with the serial number and type designation is located on the outside of the housing. The material identifier is encoded in the type designation.



Cable Gland and Plug

The explosion-proof capability of Cable gland and Plug must meet to IECEx/ATEX and this device. Suggestions are as follows to use:

- Ex d II U
- Ex tD A21 U