

ISO 9001
REGISTERED

1.0 DESCRIPTION 規範

Enclosure Housing: Aluminum or SS316

LCD Display: General type: 5 digital (-9999~69999)

Flow type: Totalizer 10 digital (top);

Flow rate 8 digital (bottom)

Input: Linear 4 to 20mA

Loop Resistance: 500Ω

Accuracy: Analog (4~20mA), Linear: Zero manual adjustable
±0.25% of span

Ambient Temperature: -20 to +85°C

Power Supply: 12 to 35VDC

Process Connection: ½" or ¾" NPT female; others option available

Conduit Connection: ½" or ¾" NPT female, or M20 x P1.5

(with adaptor); others option available

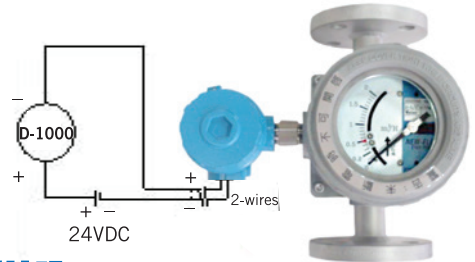
Unit: Flow type– Flow unit: Kg, GAL, Nℓ, Nm³, cc, ℓ, M³;

General type– Time unit: Day, Hr, Min, Sec;

General type– Others unit: mA, A, mV, V, PH, °F, °C, psig, Pa, Kpa, Mpa, mbar, bar, mmHg, mmWC, Torr, %, M, cm...available



D-1000-F
(Flow Type)



2.0 REMOTE TYPE SETTING STEPS 分離式設定操作步驟說明



Fig.1

Fig.1:

Please take off the cover of D-1000, and use the screwdriver to loosen the screws from the LCD plate.

逆時針方向轉開顯示器上蓋後，使用螺絲起子鬆開LCD顯示器螺絲。

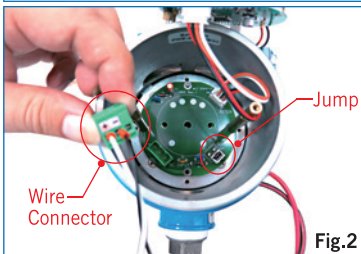


Fig.2

Fig.2:

Lift the LCD plate, and takes apart the Wire Connector lightly, then connects with the loop power (4~20mA, 2-wires) by customer. After that, inserts the Wire Connector back.

掀開LCD面板，輕輕拆下端子並接上2線式4~20mA (Loop Power)，再插回端子槽內。



Fig.3

Fig.3:

Put the LCD plate back and loosen the screws.

Bottom display is Flow Rate; Up display is Totalizer.

將LCD面板鎖回盒中，LCD下排顯示瞬間流速，上排為總累積量。

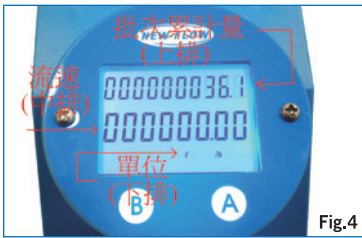


Fig.4:
INITIAL SCREEN.
(Top) Batch Totalizer
(Middle) Flow Rate
(Bottom) Unit

初使畫面
(上排)批次累計量
(中排)流速
(下排)單位



Fig.5

Fig.5:

ADJUST THE TIME UNIT: (Flow unit has set by manufacturer, the client just can adjust the time unit.)

- In the initial screen, please press and hold the button A, and also press and hold the button B in a second, then release them at the same time, and you can adjust the time unit (as below).
- Press and hold the button B, and also press and hold the button A, then release them at the same time, the time unit on the bottom of LCD display will start flashing, you can change the time unit by press the button B.
- Confirmed the time unit, press and hold the button B, and press and hold the button A, then release them at the same time. The setting of time unit is done.
- After the setting, press and hold the button A, and also press and hold the button B, then release them at the same time to back to the initial screen.

流速時間單位之調整：(流量單位原廠已設定完畢，僅可調整時間單位。)

- ▲在初使畫面時，先按住A鍵不放，再按住B鍵，然後同時放開，將會進入時間單位調整之畫面，如上圖。
- ▲先按住B鍵不放，再按住A鍵，然後同時放開，下排的時間單位將會開始閃爍，表示可以開始修改，此時只要單獨按B鍵，時間單位將可以切換選擇。
- ▲選擇好了以後，只要按住B鍵不放，再按住A鍵，然後同時放開即可完成設定。
- ▲設定完成以後，按住A鍵不放，再按住B鍵，然後同時放開，就可以回到初始畫面。



Fig.6

Fig.6: BATCH TOTALIZER FLOW RATE ZERO ADJUSTABLE

1. In the initial screen, press and hold the button B, the middle part of LCD displays "bAtch".
2. Do Not release the button B, and press the button A also, to make the batch flow rate to back to zero.
3. Release the button A and B to back to the user.

批次(單次累計)流量歸零:

1. 在初始畫面下，按住B鍵不放，中排會顯示“bAtch”。
2. 再按A鍵，批次流量即可歸零。
3. 放開A鍵及B鍵以後會自動回到初始畫面。

NOTE.

Total accumulation displayed, the middle part of LCD display “__2”, which mean the value of total accumulation is exceeded two times 10 digits. Please send the flow meter back to the factory to re-set and calibration.

總累計量(上排)顯示時，若中排顯示“__2”，表示總累計量已經超過兩次10位數，此時必須送回原廠重新設定，並進行校正。



Fig.7

Fig.7: CHECK THE TOTALIZER

In the initial screen, press and hold the button A to check the totalizer flow rate. Release the button A to back to the mode of batch flow rate, and back to the user mode.

查看總累計量:

在初始畫面下，按住A鍵不放即可查看，放開將回到初始畫面。