

NEW-FLOW

**ISO 9001
REGISTERED**

NEW-FLOW

MANUFACTURE OF FILLED TYPE THERMOMETERS
W / MICRO SWITCH INSTRUMENTS

填充式溫度計使用說明書

Instruction Manual

SAE
(Panel Mounting)



SME
(Wall Mounting)

PATENT NO.
M337067



NEW-FLOW TECHNOLOGIES, INC.

No.9 Lane 133, Xing-Hua St., Chien Chen Dist., Kaohsiung 806, Taiwan
TEL: 886-7-8135500 FAX: 886-7-8225588 / 8159758
Email: info@new-flow.com www.new-flow.com

INSTALLATION

Technical Data 規範

Remote Mounting Type

Material of Case & Cover: 316 Stainless Steel, option available

Material of Sensor Bulb Capillary Tube, Flex Tube:

SS304, SS316, and others available

Lens: Glass, safety glass available

Range Limit: -200 ~ +600°C, option available

Housing Enclosure: IP65

Accuracy: Gauge Indication: ±1% F.S.; Switch Acting Differential: ±1.6~3% F.S

Capillary Tube Length Limited: Liquid filled type: 10M;

Gas filled type: max. 50M; option available

Stem Dimensions: ø6, 8, 10, 12mm available

Process Connection: ½"NPT standard; other available

Over Range Protectino: 130% F.S.

Switch Form: One setting point SPDT x 1 or Two setting point SPDT x 2

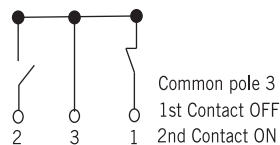
Set Point: Full scale range available

Switch Data:

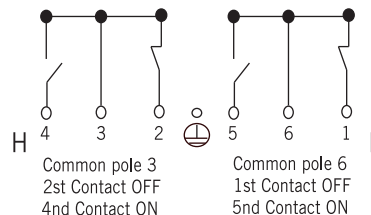
	AC Load	DC Load
Nominal Operating Voltage	250 VAC max.	28 VDC max.
Current	5A max.	5A max. (ohmic load) 3A max. (inductive load)
Contact Material	Pure silver 999.9	Pure silver 999.9
Ambient Temperature	-20°C ~ +70°C	-20°C ~ +70°C

Wire Drawing 接線圖

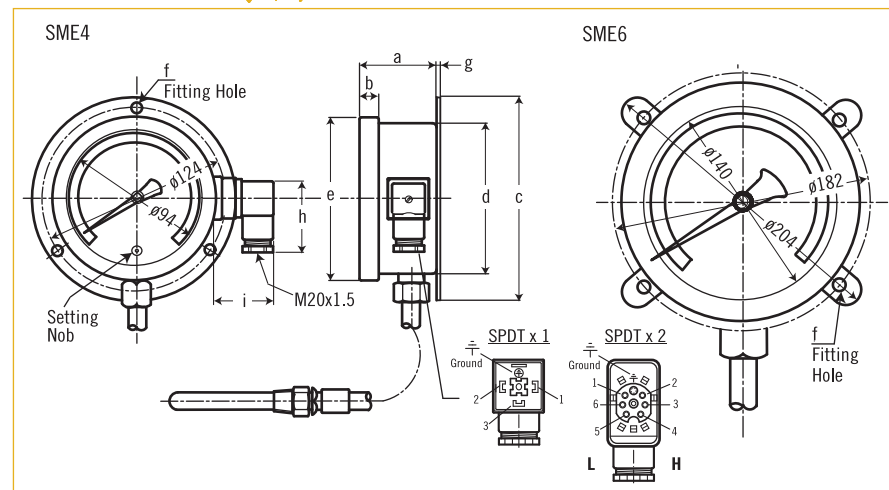
One setting point SPDT x 1



Two setting point SPDT x 2



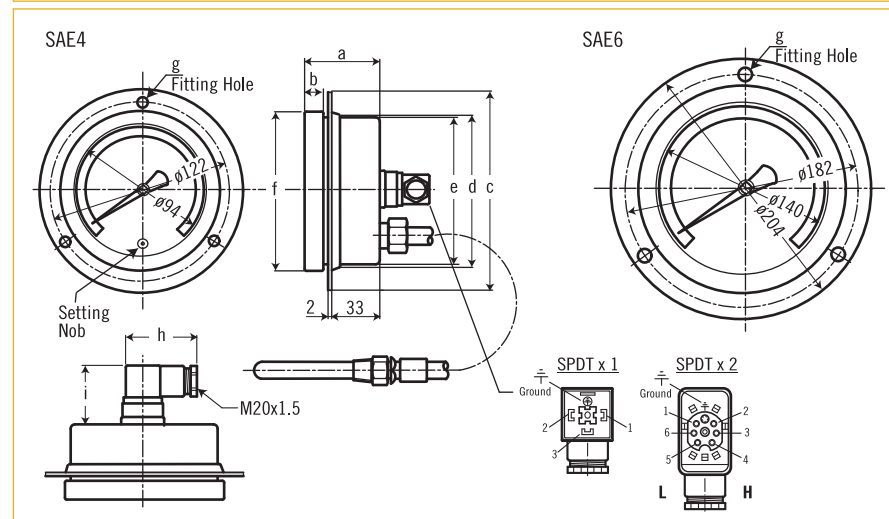
Dimensions 尺寸圖



Symbol	a	b	c	d	e	f	g
SME4	70	33	138	102	113	3-ø5.5	9
SME6	73.5	34	204	153	165	4-ø8.0	2

Switch Form	h	i
SPDT x 1	54	44
SPDT x 2	72	51

*Sensor bulb and connection consult to factory.
*Remote capillary length: Maximum length 50M



Symbol	a	b	c	d	e	f	g
SAE4	74	33	134	107	102	113	3-ø5.5
SAE6	73.5	34	204	153	153	165	3-ø7.0

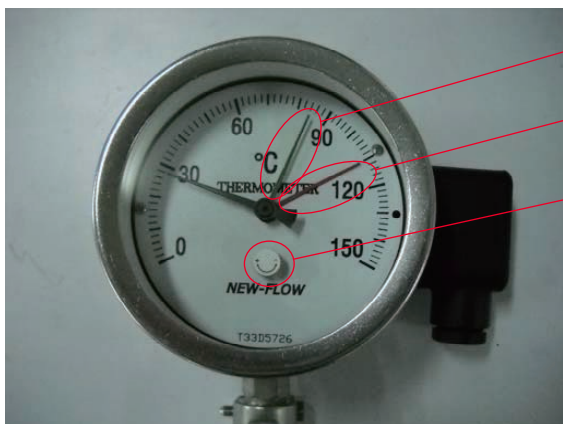
Switch Form	h	i
SPDT x 1	54	44
SPDT x 2	72	51

*Sensor bulb and connection consult to factory.
*Remote capillary length: Maximum length 50M

INSTALLATION

Two Setting Point SPDT x 2 Instruction Steps 雙開關設定操作步驟

STEP 1.



GREEN Pointer: 綠色指針:
Lo Alarm Lo Alarm

RED Pointer: 紅色指針:
Hi Alarm Hi Alarm

SET KNOB:
Adjust the setting pointer.
Rotate the set knob by clockwise
to increase the setting range;
on the other hand, rotate the
set knob by counterclockwise to
reduce the setting range.

設定旋鈕:
操作設定指針用。
順時針轉動設定鈕，設定值增大
反之，逆時針旋轉則設定值減少。

STEP 2.



Setting Step:
Open the top cover by rotating
counterclockwise.

設定步驟:
逆時針方向打開上蓋。

STEP 3.



Correct Setting Method:
Set Hi Alarm:
Rotating the set knob directly.

Set Lo Alarm:
Press down and hold the set knob
to rotate it.

正確的設定方式:
Hi Alarm:
直接轉動旋鈕即可設定。

Lo Alarm:
請將旋鈕向下壓，並保持此動作，
再轉動旋鈕即可設定。

STEP 4.



Wrong Setting Method:
Do Not move the green or red pointer
directly by hand to set the Hi/Lo alarm.
Otherwise, the setting point will be in-
accuracy, and the setting element can
not be synchronized with setting pointer.

錯誤的設定方式:
設定Hi/Lo Alarm時，請勿用手直接移動
設定指針，以避免設定點不準確，及設
定元件無法與設定指針同步。

INSTALLATION

Two Setting Point SPDT x 2 Instruction Steps 雙開關設定操作步驟

STEP 5.



NOTICE:

Finish the setting steps, please lock the top cover by rotating clockwise tightly, to make sure the gauge is waterproof.

注意事項:

完成設定指針步驟後，請將上蓋順時針鎖緊，以防水氣入侵。

STEP 6.



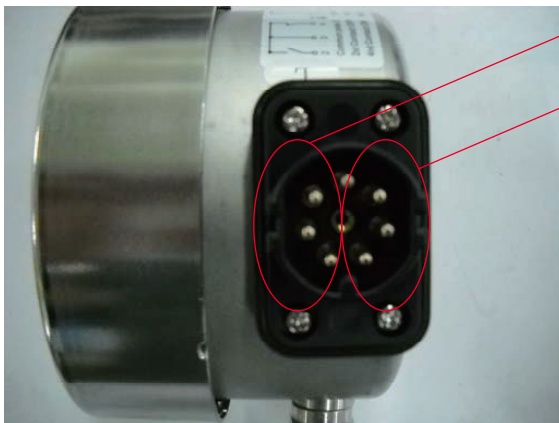
Open the Junction Box:

Use a flathead screwdriver to loosen the screw by counterclockwise, then open the junction box.

打開接線盒:

使用一字螺絲起子鬆開螺絲以打開接線盒。

STEP 7.



Hi Alarm:
4 . 3 . 2

Lo Alarm:
5 . 6 . 1

STEP 8.



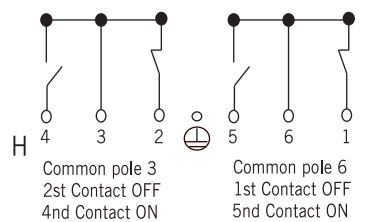
Wire Drawing:

As below...

接線圖:

如下圖示。

Two setting point SPDT x 2



INSTALLATION

Temperature Gauge Installation Method 溫度計按裝說明

