

NEW-FLOW

**ISO 9001
REGISTERED**

NEW-FLOW

Instruction Manual

**DIFFERENTIAL PRESSURE GAUGE
DPH SERIES**



NEW-FLOW TECHNOLOGIES, INC.

No.9 Lane 133, Xing-Hua St., Chien Chen Dist., Kaohsiung 806, Taiwan

TEL: 886-7-8135500 FAX: 886-7-8225588 / 8159758

Email: info@new-flow.com www.new-flow.com

INSTALLATION

Principle

DPH Series consist of high and low pressure ports. Spring magnet couple with pointer. Differential pressure indicated on dial due to ΔP pressure of high side and low side be made from magnet couple with pointer. It could combine with reed switch for using in controller system.

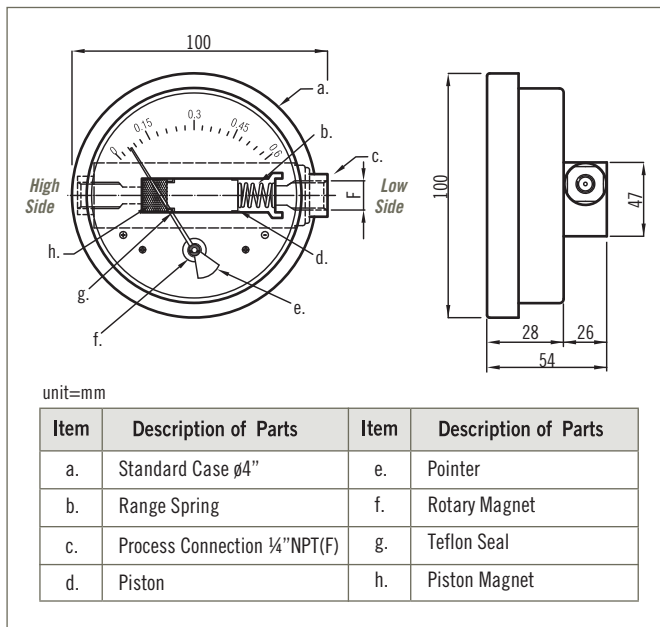
Technical Data

Accuracy: $\pm 2\%$ F.S (Ascending)

Working Pressure: 200 kg/cm²

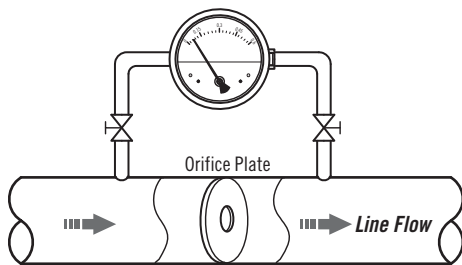
Working Temperature: 80°C

Dimension

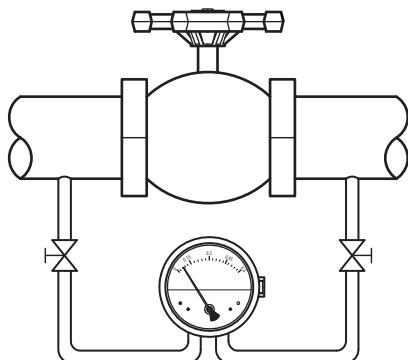


Applications & Installed Guide

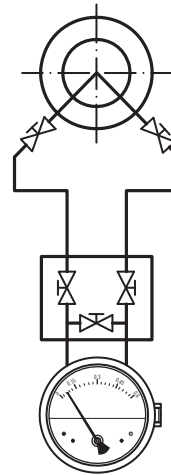
(1) Pressure Reducing For High Pressure System



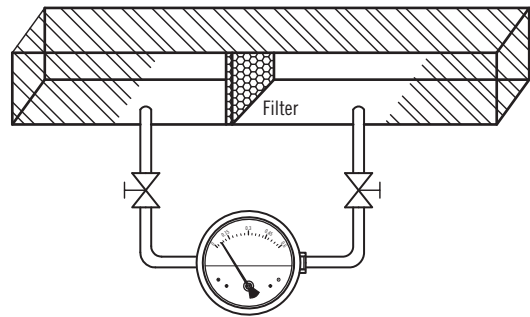
(2) Pressure Loss Test For Valve



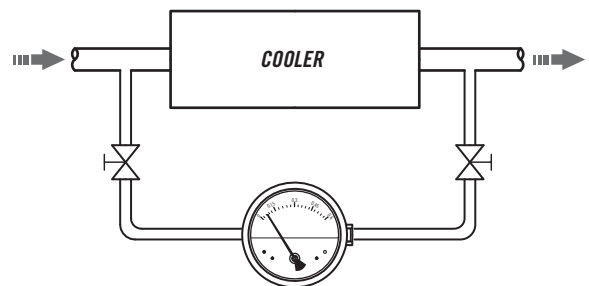
(3) DP-Flow Element



(4) For Filter In Air Flow System



(5) Pressure Loss For Cooler System



(6) Differential Pressure Indicating For Liquid Strainer

