

# GENERAL THERMOWELLS

Approvals:



**Thermowell w/  
Tantalum Jackets**

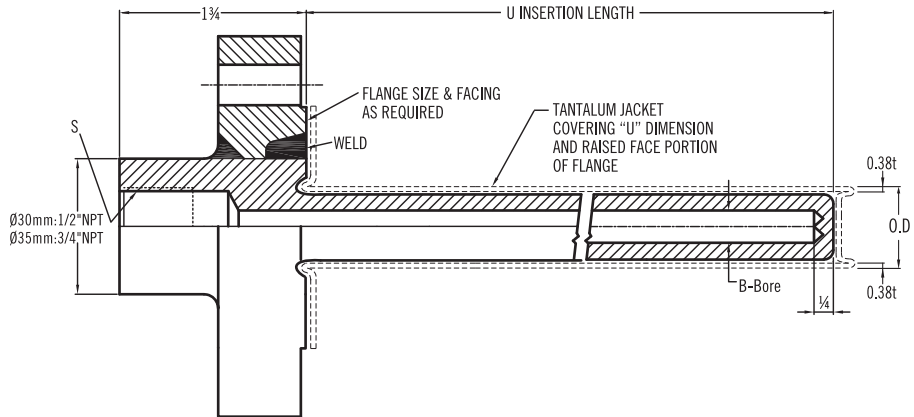
**•Tantalum jackets, pipe O.D / thickness:**

- O.D  $\phi$ 12.8mm / 0.38mmt
- O.D  $\phi$ 19.8mm / 0.38mmt
- O.D  $\phi$ 23.0mm / 0.38mmt

\*Others available upon request.

**Jacket Type Thermowells**

## Model : JAT

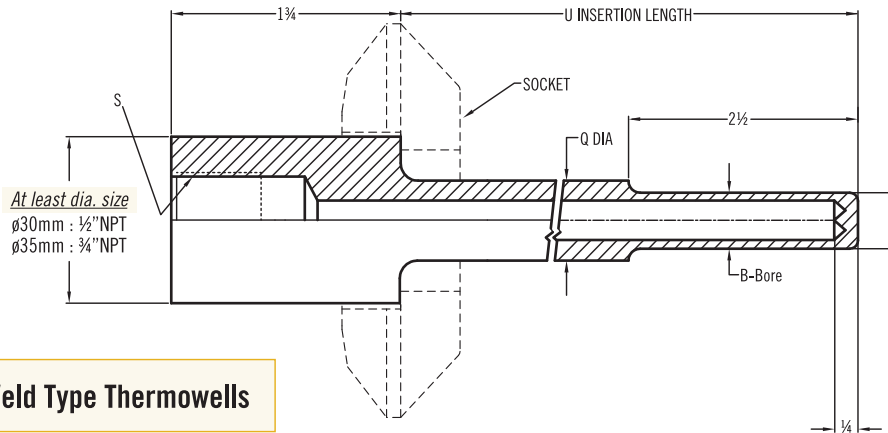


**•Tantalum jackets, for flange size:**

Flange Size	Diameter / Thickness of Tantalum Jackets Raised Face	Tantalum Jackets Available Pipe O.D		
		$\phi$ 12.8mm	$\phi$ 19.8mm	$\phi$ 23.0mm
1" ANSI 150#RFSF	$\phi$ 50.8mm / 0.6mmt	✓	✓	
1" ANSI 300#RFSF	$\phi$ 50.8mm / 0.6mmt	✓	✓	
1 1/2" ANSI 150#RFSF	$\phi$ 73.0mm / 0.6mmt	✓	✓	✓
1 1/2" ANSI 300#RFSF	$\phi$ 73.0mm / 0.6mmt	✓	✓	✓
2" ANSI 150#RFSF	$\phi$ 92.0mm / 0.6mmt		✓	✓
1" JIS 10K RFSF	$\phi$ 67.0mm / 0.6mmt	✓	✓	
1 1/2" JIS 10K RFSF	$\phi$ 81.0mm / 0.6mmt	✓	✓	

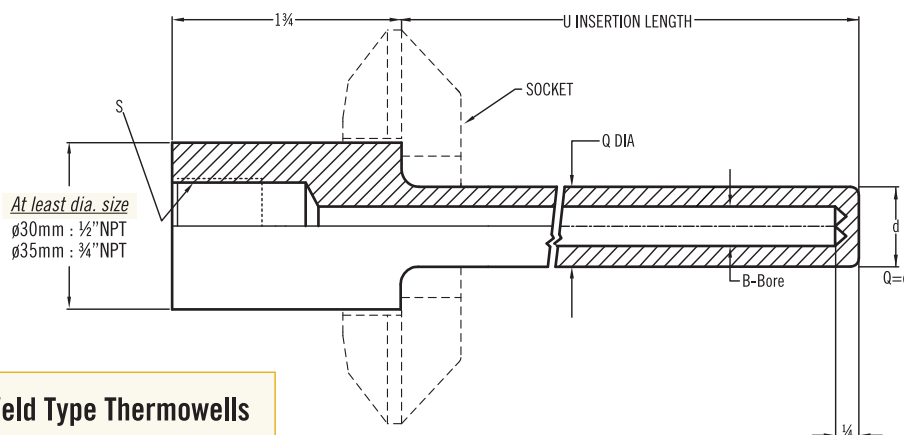
\*Please consult with the manufacturer for other flange size.

## Model : SWP



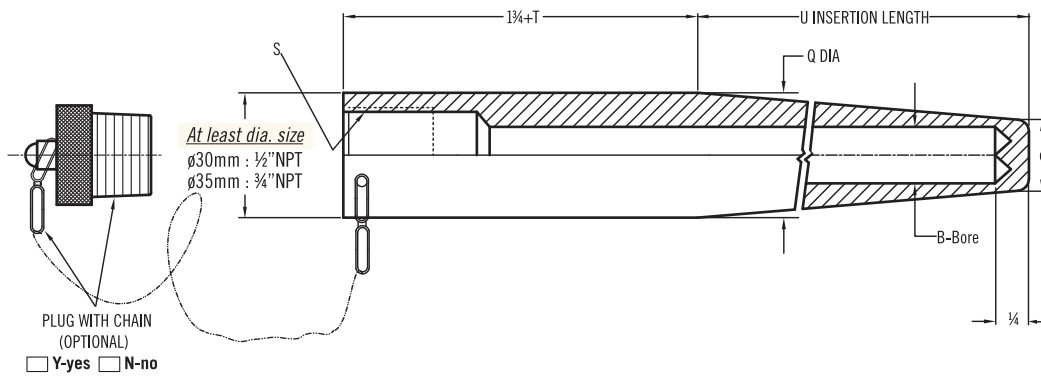
**Socket-Weld Type Thermowells**

## Model : SWS



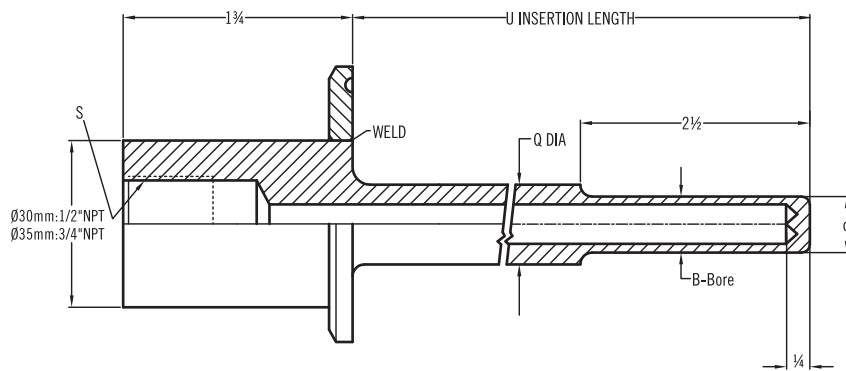
**Socket-Weld Type Thermowells**

## Model : WDN



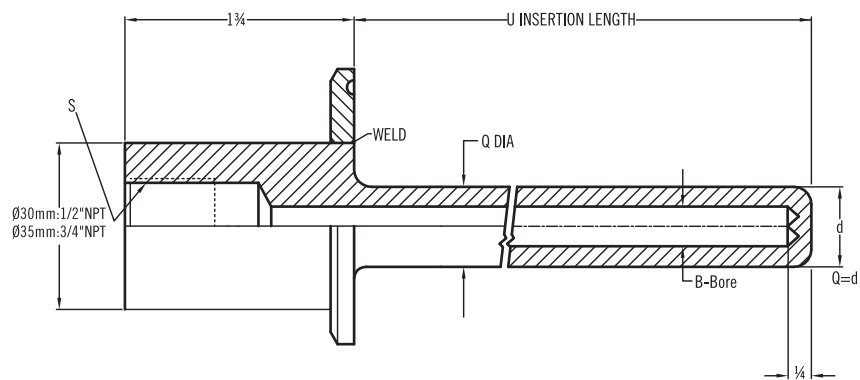
**Weld-In Type Thermowells**

## Model : SCP



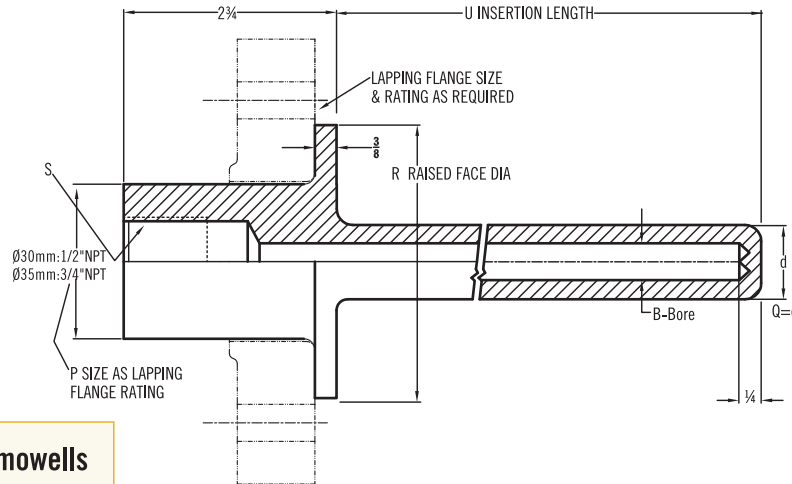
**Sanitary Clamp Type Thermowells**

## Model : SCS



**Sanitary Clamp Type Thermowells**

**Model : VST**



Van Stone Thermowells

**Ordering Information**

Model	SWP	SWS	WDN	SCP	SCS	JAT	VST
<div style="display: flex; flex-direction: column; align-items: center;"> <div style="margin-bottom: 10px;">↓</div> <div style="margin-bottom: 10px;">↓</div> <div style="margin-bottom: 10px;">↓</div> <div style="margin-bottom: 10px;">↓</div> <div style="margin-bottom: 10px;">↓</div> <div style="margin-bottom: 10px;">↓</div> <div style="margin-bottom: 10px;">↓</div> <div style="margin-bottom: 10px;">↓</div> <div style="margin-bottom: 10px;">↓</div> <div style="margin-bottom: 10px;">↓</div> <div style="margin-bottom: 10px;">↓</div> <div style="margin-bottom: 10px;">↓</div> <div style="margin-bottom: 10px;">↓</div> <div style="margin-bottom: 10px;">↓</div> <div style="margin-bottom: 10px;">↓</div> </div>	<b>Code</b>	<b>Material</b>					
	CS	Carbon Steel			MO	Monel	
	S1	304 Stainless Steel			HC	Hastelloy C276	
	S2	316 Stainless Steel			Ti	Titanium	
	S3	316L Stainless Steel			OP	Option (please indicate material)	
	<b>Code</b>	<b>Process Connection</b>					
		(1) Without (2) With (please indicate size)					
	<b>Code</b>	<b>"U" Insertion Length</b>					
		Please indicate length.					
	<b>Code</b>	<b>S-Instrument Connection</b>					
		(A) 1/2"NPT Femal (B) 3/4"NPT Female (O) option					
	<b>Code</b>	<b>Lag Length "T"</b>					
	No	0					
	Tn	option (please indicate length)					
	<b>Code</b>	<b>"Q" Diameter</b>					
	Fill in the requested diameter: e.g. 20mm=20Q			0	without Q		
<b>Code</b>	<b>"d" Diameter</b>						
	Fill in the requested diameter: e.g. 15mm=15d						
<b>Code</b>	<b>"B" BORE diameter</b>						
	Fill in the requested diameter: e.g. 7mm=7B						
<b>Code</b>	<b>Pulg with Chain</b>						
Y	Yes	N	No				
<b>Complete Ordering Code</b>							