


MAGNETIC FLOAT LEVEL TRANSMITTER

LT SERIES

The vertical float level transmitter consist of a float with a built in permanent magnet, and guide tube built in many reed switch and resistances becoming a measuring sensor. The float rise up or fall down in liquid inducing measuring sensor to make proportional voltage which combine a V/I converter turn to a 4~20mA DC output signal. To provide a liquid level control function.

Technical Data

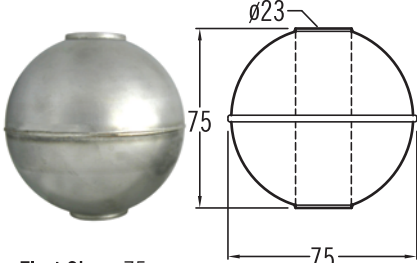
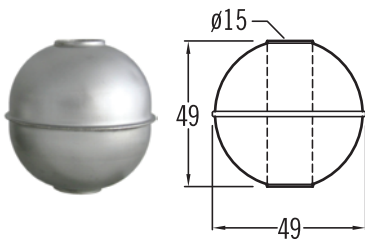
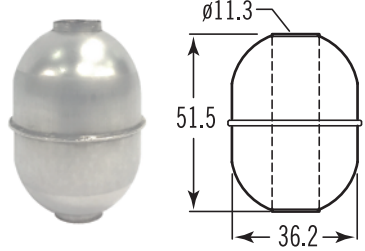
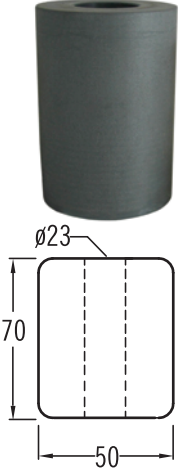
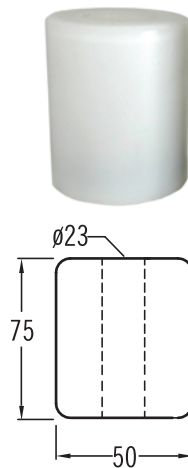
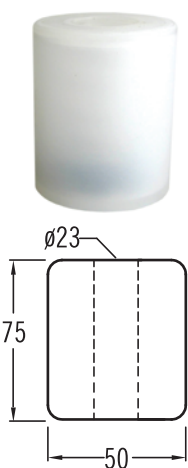
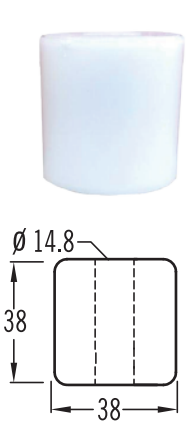
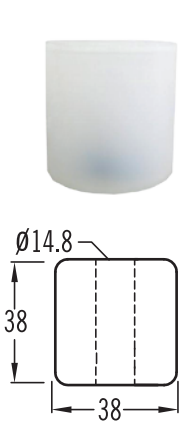
- Resolution Accuracy:** ±12mm standard; ±6mm on request
- Material:** Wetted parts are available for SS304, SS316, SS316L, PVC, PP, PVDF; and others on request.
- Output Signal:** 4~20mA DC (500~20 kΩ) 2-wire
- Power Supply:** 11V~30V DC
- Enclosure Housing:** Weather Proof; Explosion Proof available
- Max. Range:** 6000mm (SS316, SS304, SS316L, PVC, PP, PVDF)
- Limit Operating Temperature:** -20°C~+100°C
- Limit Operating Pressure:** 3~30 kg/cm² (please refer to the Float Specification)
- LCD Display:** available
- *HART® Communication:** available
- Two Wire Transmitter with HART® Protocol** 
 - Galvanic Isolation
 - Suitable for application in SIL 2 installations



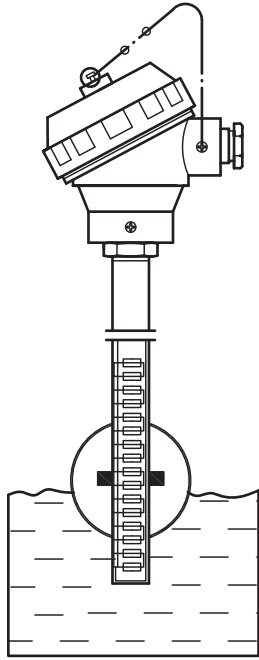
Approvals:



Float Specification

ø75x75mm (SUS316)	ø49x49mm (SUS316)	ø36.2x51.5mm (SUS316)	ø50x70mm (PVC)	ø50x75mm (PVDF)	ø50x75mm (P.P)	ø38x38mm (P.P)	ø38x38mm (PVDF)
 <p>Float Size: ø75 Max. Working Pressure: 30 kg/cm² Working S.G: ≥0.68 The Guide Tube Size: ø20 Material: SUS316 Limited Operating Temperature: -20~140°C</p>	 <p>Float Size: ø49 Max. Working Pressure: 30 kg/cm² Working S.G: ≥0.68 The Guide Tube Size: ø12 Material: SUS316 Limited Operating Temperature: -20~140°C</p>	 <p>Float Size: ø36.2 Max. Working Pressure: 30 kg/cm² Working S.G: ≥0.8 The Guide Tube Size: ø9.5 Material: SUS316 Limited Operating Temperature: -20~140°C</p>	 <p>Float Size: ø50 Max. Working Pressure: 3 kg/cm² Working S.G: ≥0.7 The Guide Tube Size: ø18 Material: P.V.C Limited Operating Temp.: 0~70°C</p>	 <p>Float Size: ø50 Max. Working Pressure: 5 kg/cm² Working S.G: ≥0.8 The Guide Tube Size: ø20 Material: PVDF Limited Operating Temp.: 0~120°C</p>	 <p>Float Size: ø50 Max. Working Pressure: 3 kg/cm² Working S.G: ≥0.7 The Guide Tube Size: ø21 Material: P.P Limited Operating Temp.: 0~60°C</p>	 <p>Float Size: ø38 Max. Working Pressure: 3 kg/cm² Working S.G: ≥0.7 The Guide Tube Size: ø12,SS316 Material: P.P Limited Operating Temp.: 0~60°C</p>	 <p>Float Size: ø38 Max. Working Pressure: 5 kg/cm² Working S.G: ≥0.7 The Guide Tube Size: ø12,SS316 Material: PVDF Limited Operating Temp.: 0~120°C</p>

Dimension



NOTE:

Head Type and Float Size, please refer to the head type and float size table.

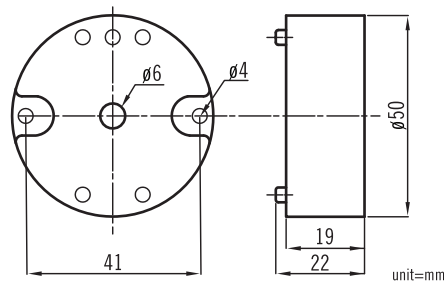
THREAD LTHA Series	FLANGE LTFA Series	WITHOUT CONNECTION LTG Series
THREAD LTHB Series	FLANGE LTFB Series	

Transmitter Type

Potentiometer I/P

Output Signals: 4~20mA DC,
Load resistance R_L (max)=(V_s-10) x 50 Ω (2-wire)
Input Range: 100 Ω to 45K Ω (3-wire)
Output Adjustment Range: Zero adjustment 0~15%
Accuracy: $\pm 0.1\%$ F.S (at 23°C)
Linearity: $\pm 0.1\%$ F.S
Supply Voltage: 10~30V DC
Temp. Coefficient: $\pm 0.02\%$ / °C
Operating Temp.: -5~+70 / °C
Operating Humidity: 0~90% RH
Terminal: DIN Type
Installation: Head and Wall Mounting
Case Material: Nylon 6 resin (Black)
Weight: about 50 grams

Dimensions

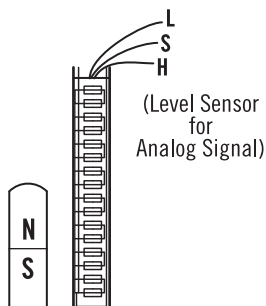
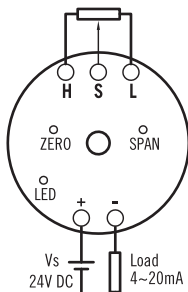


*HART® Communication: Available
Two Wire Transmitter with HART® Protocol
– Galvanic Isolation
– Suitable for application in SIL 2 installations



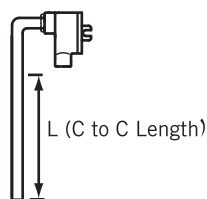
GL-T

Sketch Terminal & Level Indicating Strip



Level Sensor Unit

Model: LTG



Features

- ISO 9001 and CE certificate
- High immunity to external noise
- LED indication and DC power polarity protection
- High reliability, lasting durability and low cost

Application

- Position of valve, damper and other devices

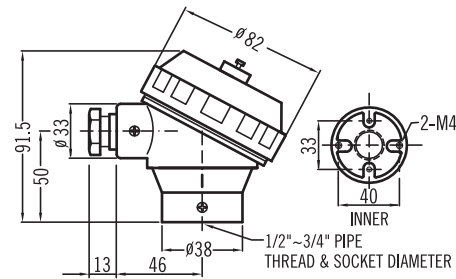
Head Type Technical Data



HN TYPE

HN Type

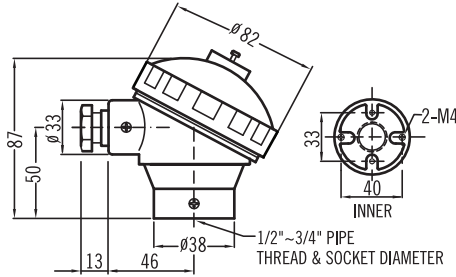
Protection: IP68
Material: Aluminum Alloy
Weight: 264g
Protection tube connection: 1/2", 3/4" (PF, NPT, BSP), M20X1.5
Extension wire connection: 1/2", 3/4" (PF, NPT, BSP), M20X1.5
 Other specifications are available on request.



HP TYPE

HP Type

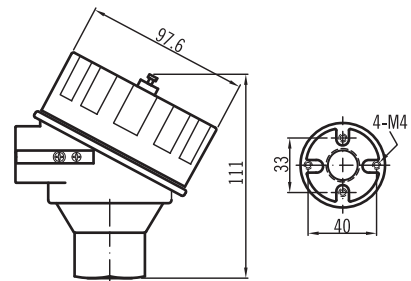
Protection: Weather Proof Type
Material: Polypropylene
Weight: 112g
Protection tube connection: 1/2" NPT, 1/2" BSP
Extension wire connection: 3/4" NPT, M20X1.5
 Other specifications are available on request.



XDS TYPE

XDS / XDA Type

Material: XDS-SS316; XDA-Aluminum alloy
Weight: XDS-1278 g; XDA-460 g
Protection tube connection: 1/2" PF, 3/4" PF, 1/2" NPT, 3/4" NPT, 1/2" BSP, 3/4" BSP, G 1/2", G 3/4", M20x1.5, M24x1.5, M25x1.5
Extension wire connection: M20x1.5, M25x1.5, 1/2" NPT, 3/4" NPT
ATEX Approvals: II 2G D
 Ex db IIC T6 Gb
 Ex tb IIIC T100°C Db



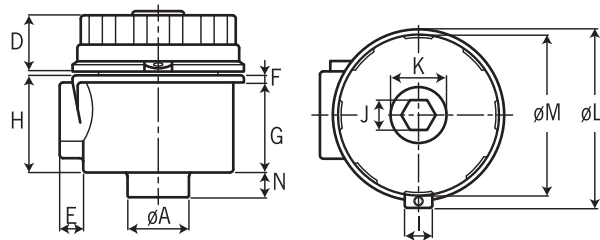
FM Approvals: XP/II/1/ABCD/T6; DIP/II,III/1/EFG/T6; Type 4X
 Explosionproof for Class I, Division 1, Groups A,B,C and D; and dust-ignitionproof for Class II, III Division 1, Groups E,F and G, hazardous (classified) locations; indoor / outdoor (NEMA Type 4X).



XDA TYPE

CS_Series (CSB Type) / CA_Series (CAB Type)

Protection: Explosion Proof Type
Material: CS-SS316; CA-Aluminum Alloy
Extension Wire Connection: Female G 1/2", 1/2" NPT, M20 x P1.5 and G 3/4", 3/4" NPT, M25 x P1.5



Type	Dimensions											
	øA	D	E	F	G	H	I	J	K	øL	øM	N
CS	34.7	33	13.8	4.2	52.8	57	13.5	17.5	32.8	102.8	94.5	14.5



CSB & CAB TYPE



D-1000-G (General Type)

D-1000-G (General Type)

Protection: Explosion Proof, Class II, Groups A, B, C & D; Class II, Groups E, F & G; NEMA 4X
Material: Aluminum or SS316 available
Extension Wire Connection: Female 1/2" or 3/4" NPT, others option available

