

MINI SIZE MAGNETIC LEVEL GAUGE SN SERIES

Technical Data

Application for non and low viscosity liquids system
In equipment for oil, food, beverages, medical, petrol chemical, water
Chamber size: 1" Pipe, SCh10
Connection size: 1/2" ~ 1"
Connection rating: Thread type: BSP(PF), NPT (with union) available. Special size on request.
 Flange type: JIS, ANSI, DIN rating available. Special size on request.

Center to center length: Maximum 2 meters
Material: Chamber & Wetted parts—SS316 ; Indicating case—SS316
 Indicating strips—Plastic

Indicating gauge orientation adjustable

Pressure limited: 10 kg/cm² (150psi)

Temperature limited: -20°C~+90°C

Sp.Gr.: 0.75 Low limited

Reed switch type and transmitter assembly available

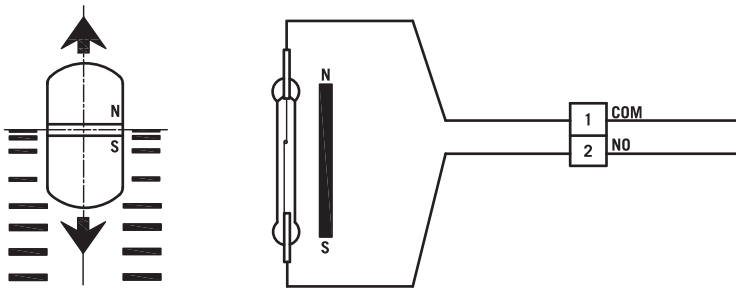
Approvals:



Switch Function

Reed Switch Type (SPST)

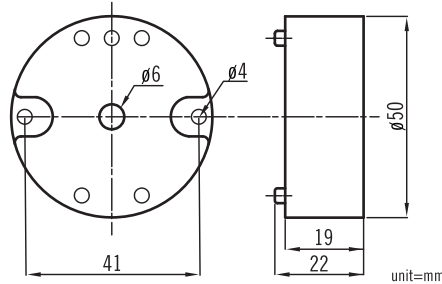
Alarm Switch: form A N.O. type bistable switch
Rating: AC 125V 0.5A / DC 100V 10W / Max. DC 250V < 40 mA



Transmitter Type

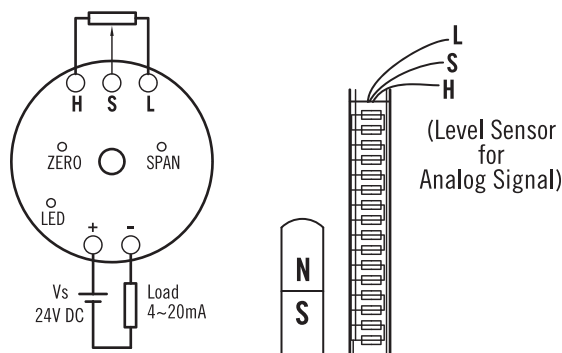
Potentiometer I/P
Output Signals: 4~20mA DC,
 Load resistance $R_L(\max) = (V_s - 10) \times 50 \Omega$ (2-Wire)
Input Range: 100 Ω to 45K Ω (3-Wire)
Output Adjustment Range: Zero adjustment 0~15%
Accuracy: $\pm 0.1\%$ F.S (at 23°C)
Linearity: $\pm 0.1\%$ F.S
Supply Voltage: 10~30V DC
Temp. Coefficient: $\pm 0.02\%/^\circ\text{C}$
Operating Temp.: -5 ~ +70/°C
Operating Humidity: 0~90% RH
Terminal: DIN type
Installation: Head and wall mounting
Case Material: Nylon 6 resin (Black)
Weight: about 50 grams

Dimensions



GL-T

Sketch Terminal & Level Indicating Strip



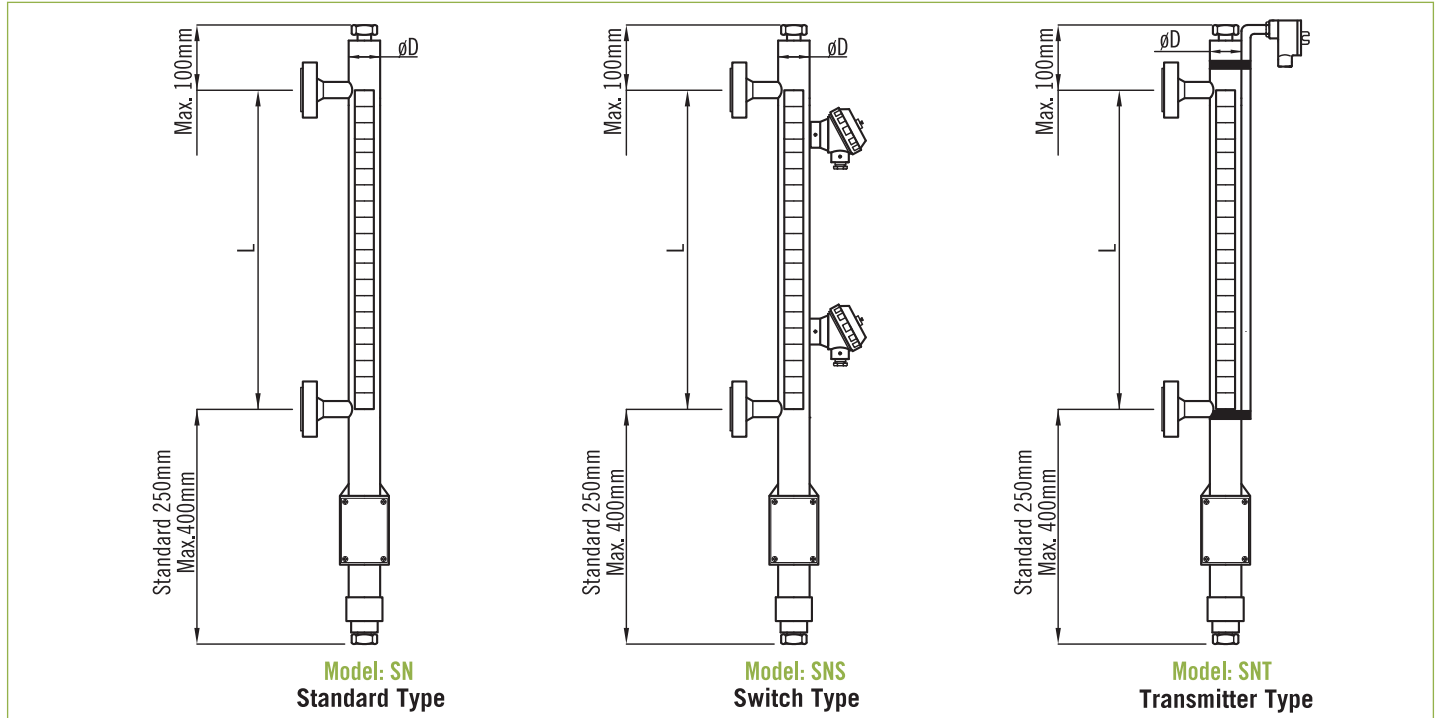
Features

- ISO 9001 and CE certificate
- High immunity to external noise
- LED indication and DC power polarity protection
- High reliability, lasting durability and low cost

Application

- Position of valve, damper and other devices

SN Standard Type–Side Mounting Series



Ordering Information

SN Type	Code	Model	Code	Transmitter Type
	SN	Standard type	SNS Switch type	SNT Transmitter Type
		Code	Connection	(1) 4~20mA Transmitter (0) without
		A	½" B ¾" C 1" O Option	Code Scale Plate
			Code Connection Rating	A Yes
			Thread type (1) BSPM (2) NPTM	B Without
			Flange type (3) JIS 10K (4) ANSI 150# (5) PN16	Code Switch or Transmitter Housing
			(T) other: _____	1 Weather proof IP65
		Code Material of Wetted Parts		2 Explosion proof
		S SS316 O Option		Code Specific Gravity
		Code Material of Indicating Case		Please directly fill out the Sp. Gr. in the of liquid order code.
		S SS316		Code Setting Point & Switch Acting Functions
		Code Material of Indicating Strips		Please fill in the requested length and float rised ↑ON or fall down ↓ON
		A Plastic		ℓ1= ____mm <input type="checkbox"/> ON
		Code Switch Type		ℓ2= ____mm <input type="checkbox"/> ON
		0 Without Switch		ℓ3= ____mm <input type="checkbox"/> ON
		1 Reed Switch		ℓ4= ____mm <input type="checkbox"/> ON
		2 Option		
		Code Switch Point		
		A 1		
		B 2		
		C 3		
		D 4		
		O without		
SN Type				+ Complete Ordering Code