

**NEW-FLOW**

**ISO 9001  
REGISTERED**

# **NEW-FLOW**

MANUFACTURE OF HORIZONTAL MAGNETIC LEVEL SWITCH

LT201-THREAD TYPE

LT203/LT204-FLANGE TYPE

AND CONTROL INSTRUMENTS

## ***Instruction Manual***



**LT201**



**LT203**



**LT204**



**NEW-FLOW TECHNOLOGIES, INC.**

No.9 Lane 133, Xing-Hua St., Chien Chen Dist., Kaohsiung 806, Taiwan

TEL: 886-7-8135500 FAX: 886-7-8225588 / 8159758

Email: [info@new-flow.com](mailto:info@new-flow.com) [www.new-flow.com](http://www.new-flow.com)

# LT201.203.204 INSTALLATION

## Technical Data

### LT-201 Thread Type

**Process connection:** 1 1/2" NPT male, thread type

**Material:** wetted parts and housing are in 316 stainless steel

**Temperature limits:** -30°C to 150°C

**Pressure limits:** 3.0 MPa (30 kg/cm<sup>2</sup>), higher limits upon request

**Enclosure housing:** weather proof IP65

**Switch function:** SPDT Micro switch

**Switch rating:** 3A/250VAC, 3A/30VDC, 0.4A/125VDC

**Conduit connection:** 1/2" NPT female

**Specific gravity:** ≥ 0.7

(option: less than 0.7 available upon request)

### LT-203 Flange Type

**Process connection:** 1 1/2" ~4" NPT male, Flange type

**Flange rating:** JIS, ANSI, DIN available

**Material:** wetted parts 316 stainless steel

**Temperature limits:** -30°C to 350°C

**Pressure limits:** 3.0 MPa (30 kg/cm<sup>2</sup>)

**Enclosure housing:** weather proof IP65

**Switch function:** SPDT Micro switch

**Switch rating:** 3A/250VAC, 3A/30VDC, 0.4A/125VDC

**Conduit connection:** 1/2" NPT female

### LT-204 Flange Type

**Process connection size:** 1 1/2" ~4"

**Flange rating:** JIS, ANSI, DIN available

**Material:** wetted parts 316 stainless steel

**Temperature limits:** -30°C to 150°C

**Pressure limits:** 3.0 MPa (30 kg/cm<sup>2</sup>)

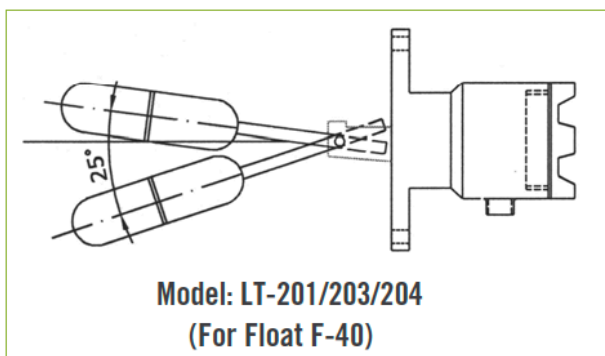
**Enclosure housing:** weather proof IP65

**Switch function:** SPDT Micro switch

**Switch rating:** 3A/250VAC, 3A/30VDC, 0.4A/125VDC

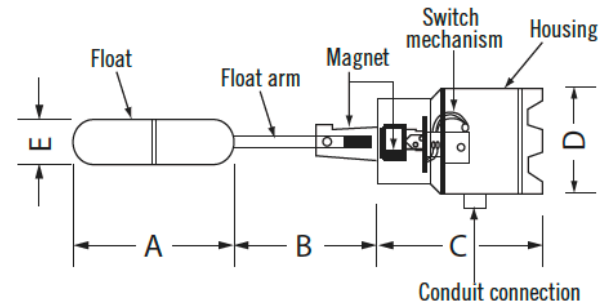
**Conduit connection:** 1/2" NPT female

## Action Angle Of Float



## Dimensions

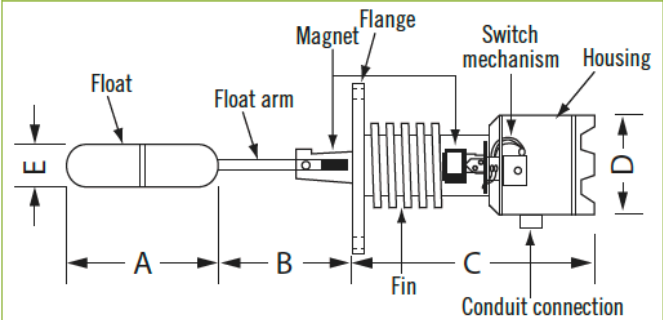
### LT-201 Thread Type



	A	B	C	D	E
mm	150	120	100	64	40

\*Special dimensions on request.

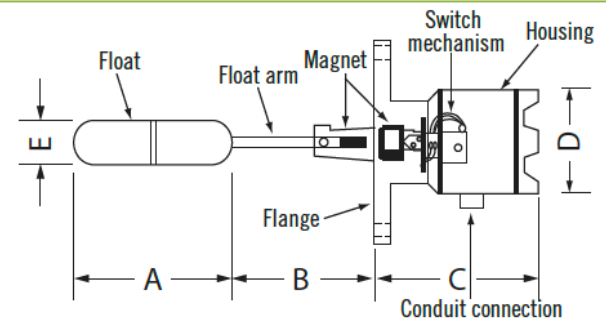
### LT-203 Flange Type



	A	B	C	D	E
mm	150	120	170 Approx.	64	40

\*Special dimensions on request.

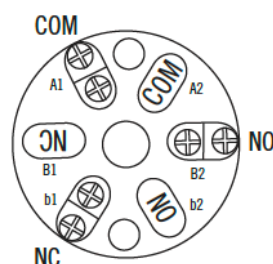
### LT-204 Flange Type



	A	B	C	D	E
mm	150	120	105 Approx.	64	40

\*Special dimensions on request.

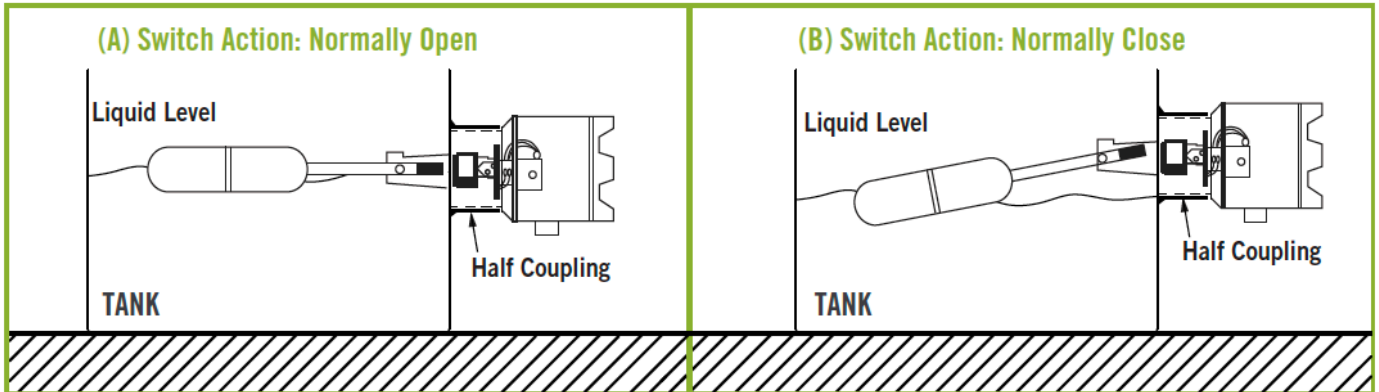
## LT-201/203/204 Wire Drawing



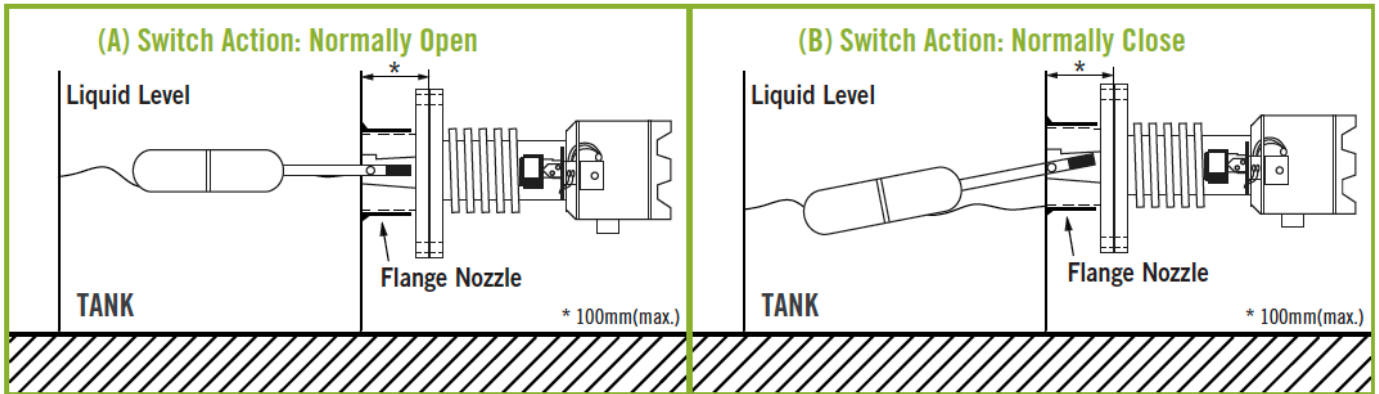
# LT201.203.204 INSTALLATION

## Float Level Switch Action Mode

### LT-201 THREAD TYPE



### LT-203 FLANGE TYPE



### LT-204 FLANGE TYPE

