

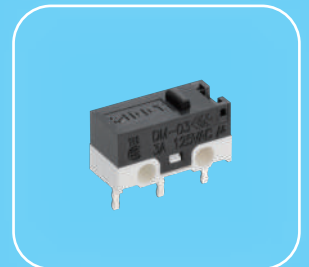
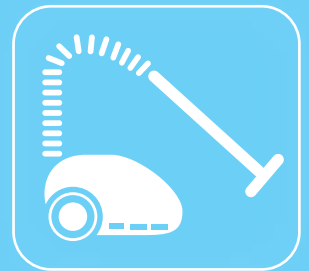


ZIPPY TECHNOLOGY CORP.

ZIPPY

Let you secure and at ease

Guide Book 2020-2021



ROTARY SWITCHES ANL SERIES



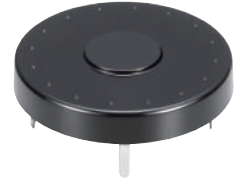
165

ROTARY SWITCHES ANO SERIES



166

ROTARY SWITCHES ANM SERIES



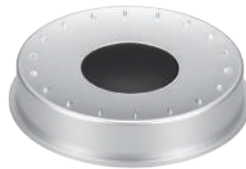
167

ROTARY SWITCHES ANQ SERIES



168

ROTARY SWITCHES KC SERIES



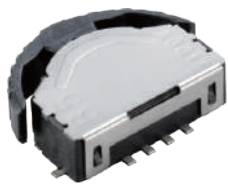
169

ROTARY SWITCHES KCL SERIES



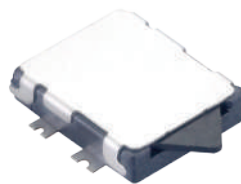
170

SLIDE SWITCHES B5 SERIES



171

SLIDE SWITCHES D4 SERIES



172

SIDE MINI SWITCHES BS SERIES



173

PUSH SWITCHES P1 SERIES



174

PUSH SWITCHES P2 SERIES



175

PUSH SWITCHES P3 SERIES



176

PUSH SWITCHES P8 SERIES



177

ROCKER SWITCHES RE SERIES



179

ROCKER SWITCHES RF SERIES



180

ROCKER SWITCHES FT SERIES



181

DETECT SWITCHES B8 SERIES



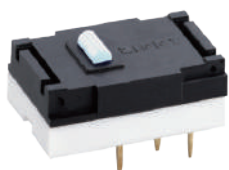
182

HOOK SWITCHES HK01 SERIES



184

HOOK SWITCHES HM2 SERIES



185

TACT SWITCHES T6 SERIES



187

ENCODER SWITCHES RP SERIES



189

LOW TORQUE SWITCHES CNR SERIES



191

PUSH SWITCHES



P1 SERIES

SPECIFICATIONS

Insulation Resistance (at 500VDC/minute)

Min. 100MΩ

Operating Temperature Range

0°C to 55°C

Vibration

10 ~ 55 Hz, displacement 0.75 mm (p-p)

Electrical Service Life

Min. 10,000 operations

Electrical Operating Frequency

10 operations per minute

Mechanical Service Life

Min. 100,000 operations

Mechanical Operating Frequency

30 operations per minute

Travel

Pre travel Max.1.5mm,

Total travel 2.5±0.5mm

RATING

0.1A 30VDC

APPLICATIONS

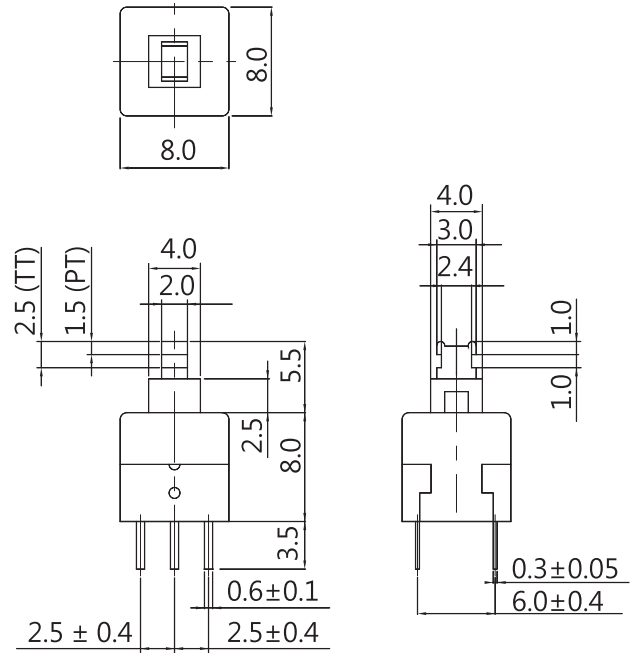
Telephone, Computer, Tester, Automotive, Apparatus

ORDERING INFORMATION

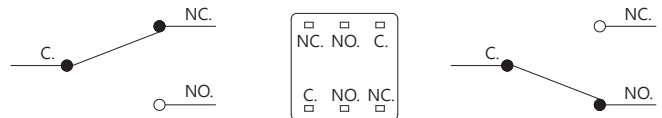
P	1	1	S	—	Z	NO-TOP BUTTON					
P	1	1	S	—	1	L	—	Z			
SERIES PREFIX		CODE	TYPE	CODE	OPERATING FORCE	CODE	TOP BUTTON TYPE	CODE	TOP BUTTON COLOR	ROHS CODE	
		0	NON LOCK	L	LIGHT	1	7 x 7 x 8 mm	R	RED	W	WHITE
		1	LOCK	S	STANDARD	3	∅7 x 8 mm	L	BLUE	E	GREEN
		2	NON LOCK CLICK					B	BLACK	Y	YELLOW

DIMENSIONS

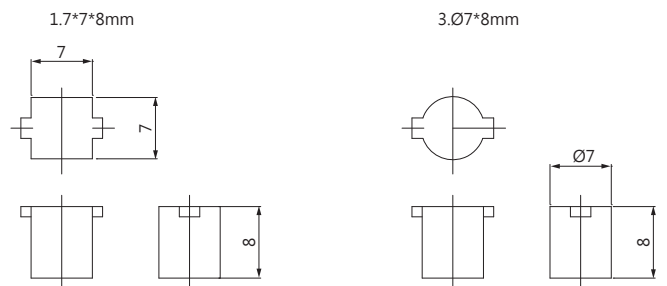
Unless otherwise specified, a tolerance of ±0.4mm applies to all dimensions.



CONTACT CONFIGURATION



TOP BUTTON DIMENSIONS



OPERATING FORCE

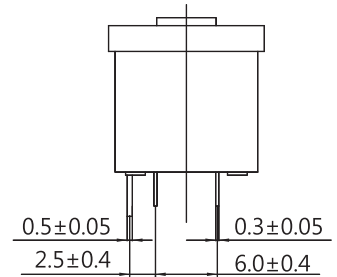
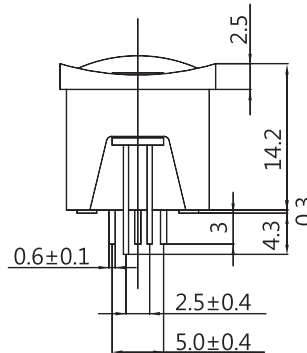
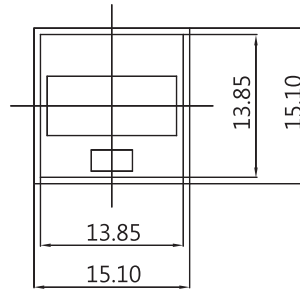
FORCE/TYPE	NON LOCK	LOCK
L	90 ± 30 gf	130 ± 50 gf
S	150 ± 50 gf	180 ± 50 gf

PUSH SWITCHES



DIMENSIONS

Unless otherwise specified, a tolerance of $\pm 0.4\text{mm}$ applies to all dimensions.



P2 SERIES

SPECIFICATIONS

Insulation Resistance (at 500VDC/minute)

Min. 100M Ω

Operating Temperature Range

0°C to 55°C

Vibration

10 ~ 55 Hz, displacement 0.75 mm (p-p)

Electrical Service Life

Min. 10,000 operations.

Electrical Operating Frequency

10 operations per minute

LED Rating

Max. 20mA

Mechanical Service Life

Min. 100,000 operations.

Mechanical Operating Frequency

30 operations per minute

Travel

Pre travel Max. 1.5mm

Total travel $2.5 \pm 0.5\text{mm}$

RATING

0.1A 30VDC

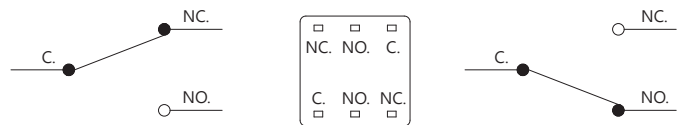
APPLICATIONS

Computer, Alarm, Coin-op phone, Auto garage door

ORDERING INFORMATION

P	2	0	S	L	G	R	Z				
SERIES PREFIX	CODE	TYPE	CODE	OPERATING FORCE	CODE	TOP BUTTON COLOR	CODE	CASE COLOR	CODE	LED COLOR	ROHS CODE
	0	NON LOCK		NON LOCK 150±50g	R	RED	G	GRAY	R	RED	
	1	LOCK	S	LOCK 180±50g	L	BLUE	B	BLACK	E	GREEN	
	2	NON LOCK CLICK			E	GREEN			Y	YELLOW	
					Y	YELLOW				WITHOUT LED	
					N	BROWN					
					O	ORANGE					
					B	BLACK					
					G	GRAY					

CONTACT CONFIGURATION



PUSH SWITCHES



P3 SERIES

SPECIFICATIONS

Contact Resistance (initial)

Max. 300mΩ

Measured by ohm meter –open voltage <1VDC, driver current -100mA

Insulation Resistance (at 500VDC/minute)

Min. 100MΩ

Dielectric Strength

Min. 1,500VAC(50-60HZ)/minute between Live parts.

Min. 3,000VAC(50-60HZ)/minute between Live parts and dead metal parts

Operating Temperature Range

-40°C to 125°C (with no icing)

Vibration

10~55Hz, displacement 0.75 mm (p-p)

Electrical Service Life

8(8)A - Min. 50,000 operations

Other ratings - Min. 10,000 operations

Electrical Operating Frequency

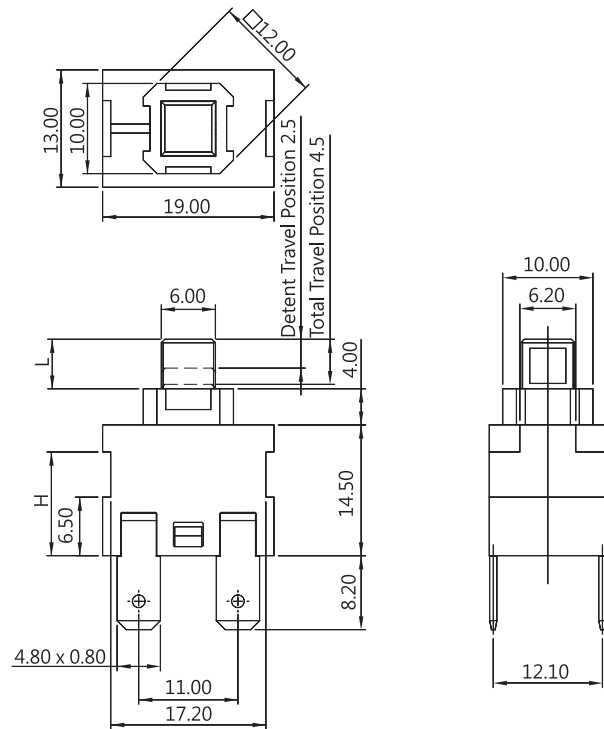
10~30 operations per minute

APPLICATIONS

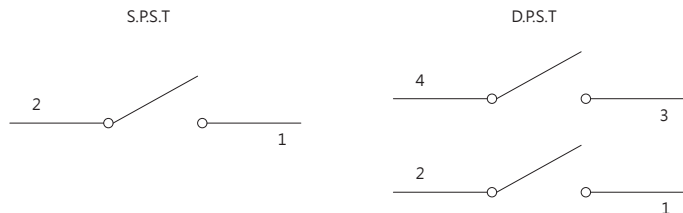
Vacuum Cleaner, Refrigerator, Espresso Machine

DIMENSIONS

Unless otherwise specified, a tolerance of ±0.4mm applies to all dimensions.



CONTACT CONFIGURATION



CERTIFICATE INFORMATION

Model Name	UL,cUL	ENEC
P3-10	10A 125/250 VAC T125 1E4 1/2HP 125/250 VAC T55 1E4	10(4)A 125/250 VAC T125 1E4
P3-16	16A 125/250 VAC T125 1E4 3/4HP 125/250 VAC T85 1E4	16.1(4)A 125/250VAC T125 1E4 8(8)A 125/250VAC T125 5E4

ORDERING INFORMATION

SERIES PREFIX	C O D E	RATING CURRENT	C O D E	OPERATING FORCE	CIRCUIT ARRANGEMENT	C O D E	BUTTON TYPE	C O D E	COVER TYPE	C O D E	TERMINAL TYPE	ROHS CODE
P3	16	10A 1/2HP 125/250VAC 10(4)A 125/250VAC	S1	S.P.S.T. OF: Max. 1100gf		A	L=5.5mm+LOCK	1	H=11.50mm	D	#187 TERMINAL	
	16	16A 3/4HP 125/250VAC 16.1(4)A 125/250VAC 8(8)A 125/250VAC	S2	D.P.S.T. OF: Max. 1600gf		B	L=5.5mm+NON LOCK	2	H=12.25mm	H	#187 TERMINAL	
			L1	S.P.S.T. OF: Max. 600gf		C	L=8.0mm+LOCK					
			L2	D.P.S.T. OF: Max. 1100gf		D	L=8.0mm+NON LOCK					

PUSH SWITCHES



P8 SERIES

SPECIFICATIONS

Contact Resistance (initial)

Max. 50mΩ

Measured by ohm meter –open voltage <1VDC, driver current -100mA

Insulation Resistance (at 500VDC/minute)

Min. 100MΩ

Dielectric Strength

Min. 1,000VAC(50-60HZ)/minute between Live parts.

Min. 3,000VAC(50-60HZ)/minute between Live parts and dead metal parts

Operating Temperature Range

-40°C to 85°C (with no icing)

Vibration

10~55HZ, displacement 0.75 mm (p-p)

Electrical Service Life

Min. 10,000 operations

Electrical Operating Frequency

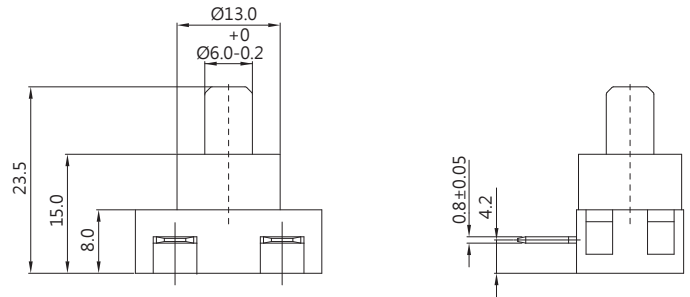
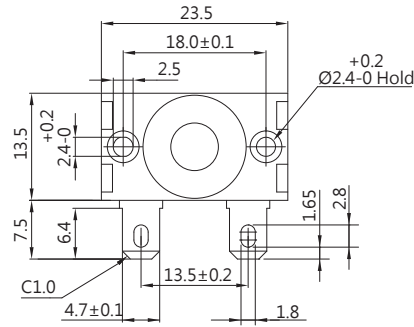
10~30 operations per minute

APPLICATIONS

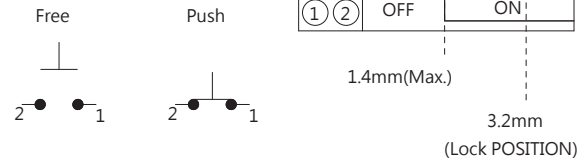
Juice Maker, Blender, Food processor

DIMENSIONS

Unless otherwise specified, a tolerance of ±0.4mm applies to all dimensions.



CONTACT CONFIGURATION

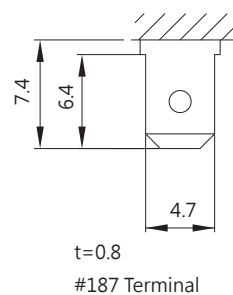


CERTIFICATE INFORMATION

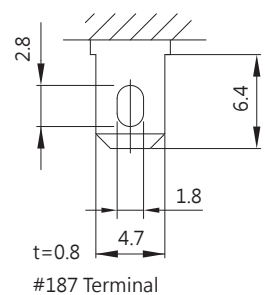
Model Name	UL, cUL	ENEC
P8-10S	6A 250VAC 10A 125VAC (Temp85°C) Min. 6,000 operations	7(4)A 250VAC,µT85/551E4

TERMINAL TYPES

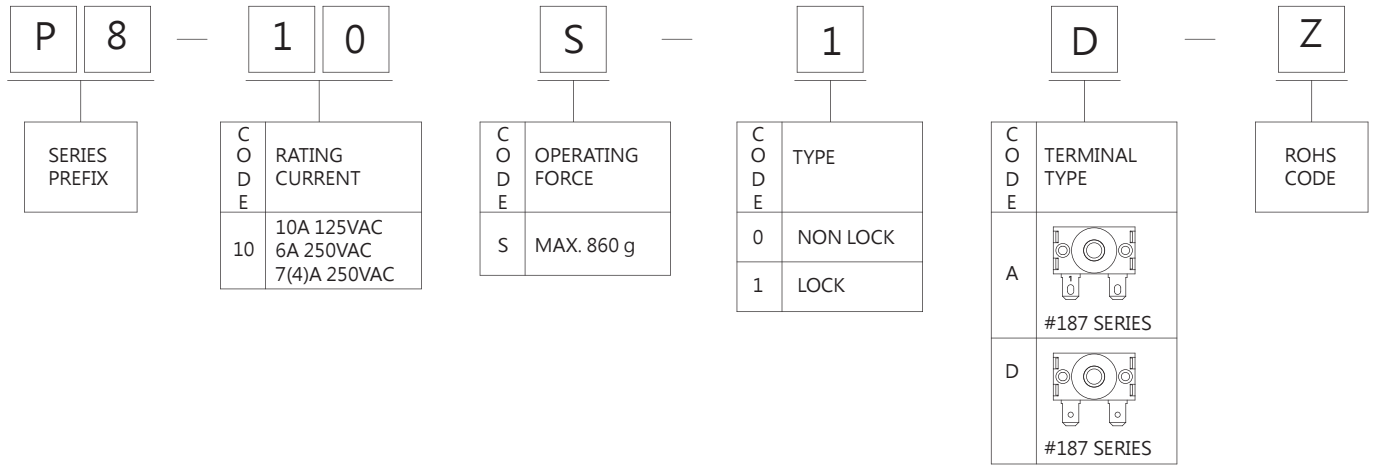
D TYPE



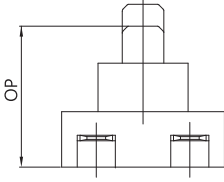
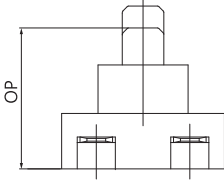
A TYPE



ORDERING INFORMATION



OPERATING CHARACTERISTICS

SWITCH TYPE	PART SUFFIX	OF Max (gf)	FULL TRAVEL (mm)	LOCK TRAVEL (mm)
P8-10S-0 □ -Z		860gf	4.0±0.5mm	---
P8-10S-1 □ -Z		860gf	4.0±0.5mm	2.0±0.5mm