

Fuel Level Gauge



STYLE	P/N	Model	Installation Dia	Working Volt	Signal	Range	Bezel
A	800-00001	PMF2-WS-0-190	Φ 52mm	9-32V	0-190Ω	E-F	316L
A	800-00006	PMF2-WS-240-33	Φ 52mm	9-32V	240-33Ω	E-F	316L
B	800-20001	PMF2-WW-0-190	Φ 52mm	9-32V	0-190Ω	E-F	316L
B	800-20002	PMF2-WW-240-33	Φ 52mm	9-32V	240-33Ω	E-F	316L
C	800-00002	PMF2-WG-0-190	Φ 52mm	9-32V	0-190Ω	E-F	316L
C	800-00007	PMF2-WG-240-33	Φ 52mm	9-32V	240-33Ω	E-F	316L
D	800-00003	PMF2-BG-0-190	Φ 52mm	9-32V	0-190Ω	E-F	316L
D	800-00008	PMF2-BG-240-33	Φ 52mm	9-32V	240-33Ω	E-F	316L
E	800-00004	PMF2-BS-0-190	Φ 52mm	9-32V	0-190Ω	E-F	316L
E	800-00009	PMF2-BS-240-33	Φ 52mm	9-32V	240-33Ω	E-F	316L
F	800-00005	PMF2-BN-0-190	Φ 52mm	9-32V	0-190Ω	E-F	316L
F	800-00010	PMF2-BN-240-33	Φ 52mm	9-32V	240-33Ω	E-F	316L

Water Level Gauge



STYLE	P/N	Model	Installation Dia	Working Volt	Signal	Range	Bezel
A	800-00011	PMW2-WS-0-190	Φ 52mm	9-32V	0-190Ω	E-F	316L
A	800-00016	PMW2-WS-240-33	Φ 52mm	9-32V	240-33Ω	E-F	316L
B	800-20003	PMW2-WW-0-190	Φ 52mm	9-32V	0-190Ω	E-F	316L
B	800-20004	PMW2-WW-240-33	Φ 52mm	9-32V	240-33Ω	E-F	316L
C	800-00012	PMW2-WG-0-190	Φ 52mm	9-32V	0-190Ω	E-F	316L
C	800-00017	PMW2-WG-240-33	Φ 52mm	9-32V	240-33Ω	E-F	316L
D	800-00013	PMW2-BG-0-190	Φ 52mm	9-32V	0-190Ω	E-F	316L
D	800-00018	PMW2-BG-240-33	Φ 52mm	9-32V	240-33Ω	E-F	316L
E	800-00014	PMW2-BS-0-190	Φ 52mm	9-32V	0-190Ω	E-F	316L
E	800-00019	PMW2-BS-240-33	Φ 52mm	9-32V	240-33Ω	E-F	316L
F	800-00015	PMW2-BN-0-190	Φ 52mm	9-32V	0-190Ω	E-F	316L
F	800-00020	PMW2-BN-240-33	Φ 52mm	9-32V	240-33Ω	E-F	316L

Sewage Level Gauge



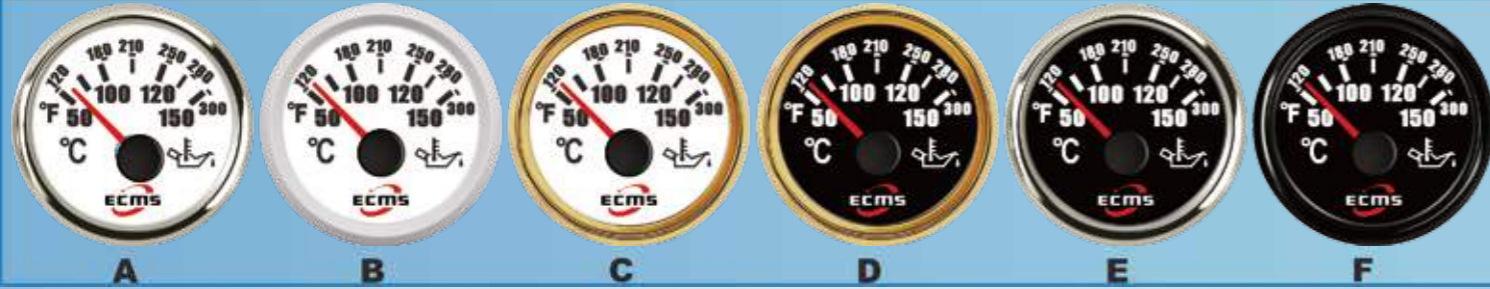
STYLE	P/N	Model	Installation Dia	Working Volt	Signal	Range	Bezel
A	800-00021	PMS2-WS-0-190	Φ 52mm	9-32V	0-190Ω	L-F	316L
A	800-00026	PMS2-WS-240-33	Φ 52mm	9-32V	240-33Ω	L-F	316L
B	800-20005	PMS2-WW-0-190	Φ 52mm	9-32V	0-190Ω	L-F	316L
B	800-20006	PMS2-WW-240-33	Φ 52mm	9-32V	240-33Ω	L-F	316L
C	800-00022	PMS2-WG-0-190	Φ 52mm	9-32V	0-190Ω	L-F	316L
C	800-00027	PMS2-WG-240-33	Φ 52mm	9-32V	240-33Ω	L-F	316L
D	800-00023	PMS2-BG-0-190	Φ 52mm	9-32V	0-190Ω	L-F	316L
D	800-00028	PMS2-BG-240-33	Φ 52mm	9-32V	240-33Ω	L-F	316L
E	800-00024	PMS2-BS-0-190	Φ 52mm	9-32V	0-190Ω	L-F	316L
E	800-00029	PMS2-BS-240-33	Φ 52mm	9-32V	240-33Ω	L-F	316L
F	800-00025	PMS2-BN-0-190	Φ 52mm	9-32V	0-190Ω	L-F	316L
F	800-00030	PMS2-BN-240-33	Φ 52mm	9-32V	240-33Ω	L-F	316L

Water Temperature Gauge



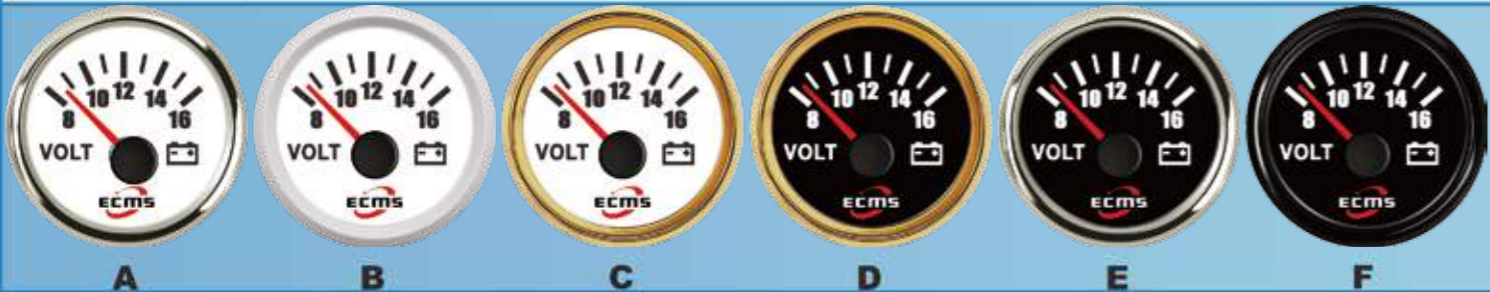
STYLE	P/N	Model	Installation Dia	Working Volt	Signal	Range	Bezel
A	800-00031	PMT2-WS-40-120	Φ 52mm	9-32V	287.4-22.4Ω	40-120°C	316L
B	800-20007	PMT2-WW-40-120	Φ 52mm	9-32V	287.4-22.4Ω	40-120°C	316L
C	800-00032	PMT2-WG-40-120	Φ 52mm	9-32V	287.4-22.4Ω	40-120°C	316L
D	800-00033	PMT2-BG-40-120	Φ 52mm	9-32V	287.4-22.4Ω	40-120°C	316L
E	800-00034	PMT2-BS-40-120	Φ 52mm	9-32V	287.4-22.4Ω	40-120°C	316L
F	800-00035	PMT2-BN-40-120	Φ 52mm	9-32V	287.4-22.4Ω	40-120°C	316L

Oil Temperature Gauge



STYLE	P/N	Model	Installation Dia	Working Volt	Signal	Range	Bezel
A	800-00036	PMT2-WS-50-150	Φ52mm	9-32V	361-19Ω	50-150℃	316L
B	800-20008	PMT2-WW-50-150	Φ52mm	9-32V	361-19Ω	50-150℃	316L
C	800-00037	PMT2-WG-50-150	Φ52mm	9-32V	361-19Ω	50-150℃	316L
D	800-00038	PMT2-BG-50-150	Φ52mm	9-32V	361-19Ω	50-150℃	316L
E	800-00039	PMT2-BS-50-150	Φ52mm	9-32V	361-19Ω	50-150℃	316L
F	800-00040	PMT2-BN-50-150	Φ52mm	9-32V	361-19Ω	50-150℃	316L

Voltmeter



STYLE	P/N	Model	Installation Dia	Working Volt	Signal	Range	Bezel
A	800-00056	PMV2-WS-8-16	Φ52mm	9-32V	8-16V	8-16V	316L
A	800-00061	PMV2-WS-16-32	Φ52mm	9-32V	16-32V	16-32V	316L
B	800-20012	PMV2-WW-8-16	Φ52mm	9-32V	8-16V	8-16V	316L
B	800-20013	PMV2-WW-16-32	Φ52mm	9-32V	16-32V	16-32V	316L
C	800-00057	PMV2-WG-8-16	Φ52mm	9-32V	8-16V	8-16V	316L
C	800-00062	PMV2-WG-16-32	Φ52mm	9-32V	16-32V	16-32V	316L
D	800-00058	PMV2-BG-8-16	Φ52mm	9-32V	8-16V	8-16V	316L
D	800-00063	PMV2-BG-16-32	Φ52mm	9-32V	16-32V	16-32V	316L
E	800-00059	PMV2-BS-8-16	Φ52mm	9-32V	8-16V	8-16V	316L
E	800-00064	PMV2-BS-16-32	Φ52mm	9-32V	16-32V	16-32V	316L
F	800-00060	PMV2-BN-8-16	Φ52mm	9-32V	8-16V	8-16V	316L
F	800-00065	PMV2-BN-16-32	Φ52mm	9-32V	16-32V	16-32V	316L

Pressure Gauge



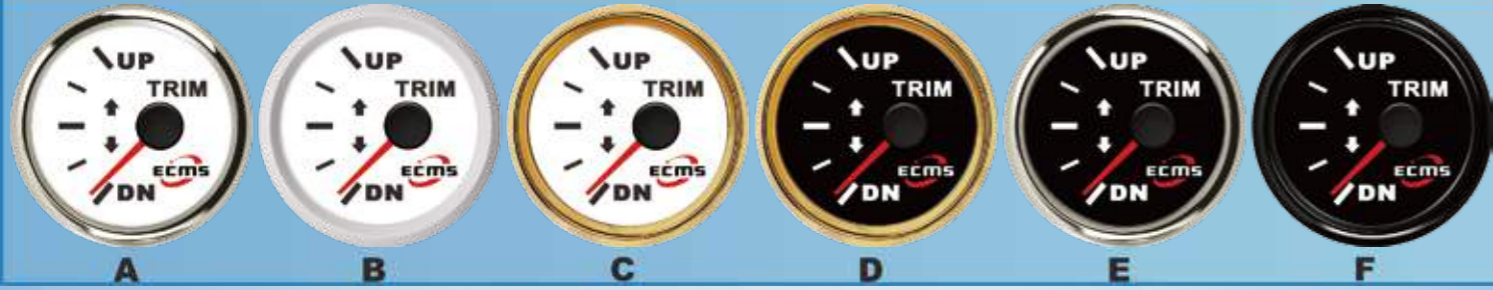
STYLE	P/N	Model	Installation Dia	Working Volt	Signal	Range	Bezel
A	800-00041	PMP2-WS-0-5	Φ52mm	9-32V	10-184Ω	0-5Bar	316L
A	800-00046	PMP2-WS-0-10	Φ52mm	9-32V	10-184Ω	0-10Bar	316L
B	800-20009	PMP2-WW-0-5	Φ52mm	9-32V	10-184Ω	0-5Bar	316L
B	800-20010	PMP2-WW-0-10	Φ52mm	9-32V	10-184Ω	0-10Bar	316L
C	800-00042	PMP2-WG-0-5	Φ52mm	9-32V	10-184Ω	0-5Bar	316L
C	800-00047	PMP2-WG-0-10	Φ52mm	9-32V	10-184Ω	0-10Bar	316L
D	800-00043	PMP2-BG-0-5	Φ52mm	9-32V	10-184Ω	0-5Bar	316L
D	800-00048	PMP2-BG-0-10	Φ52mm	9-32V	10-184Ω	0-10Bar	316L
E	800-00044	PMP2-BS-0-5	Φ52mm	9-32V	10-184Ω	0-5Bar	316L
E	800-00049	PMP2-BS-0-10	Φ52mm	9-32V	10-184Ω	0-10Bar	316L
F	800-00045	PMP2-BN-0-5	Φ52mm	9-32V	10-184Ω	0-5Bar	316L
F	800-00050	PMP2-BN-0-10	Φ52mm	9-32V	10-184Ω	0-10Bar	316L

Pressure Gauge



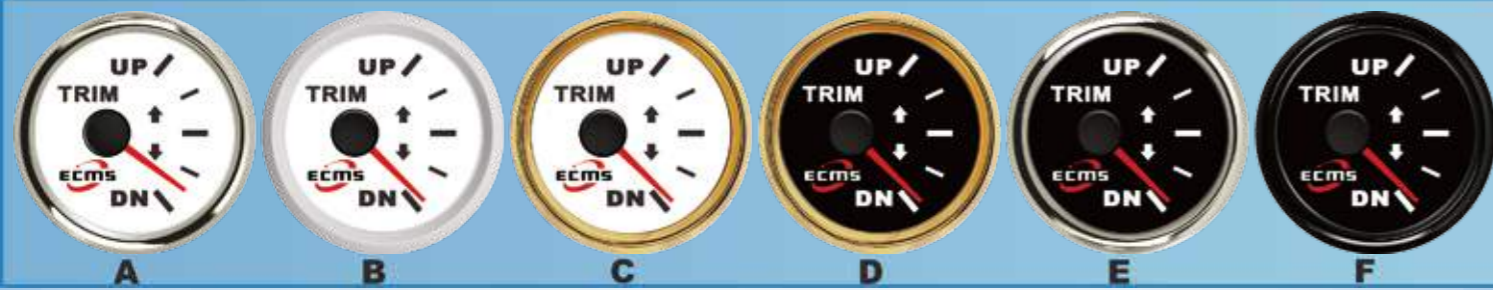
STYLE	P/N	Model	Installation Dia	Working Volt	Signal	Range	Bezel
A	800-00051	PMP2-WS-0-30	Φ52mm	9-32V	0.5-4.5V	0-30Bar	316L
B	800-20011	PMP2-WW-0-30	Φ52mm	9-32V	0.5-4.5V	0-30Bar	316L
C	800-00052	PMP2-WG-0-30	Φ52mm	9-32V	0.5-4.5V	0-30Bar	316L
D	800-00053	PMP2-BG-0-30	Φ52mm	9-32V	0.5-4.5V	0-30Bar	316L
E	800-00054	PMP2-BS-0-30	Φ52mm	9-32V	0.5-4.5V	0-30Bar	316L
F	800-00055	PMP2-BN-0-30	Φ52mm	9-32V	0.5-4.5V	0-30Bar	316L

Trim Gauge



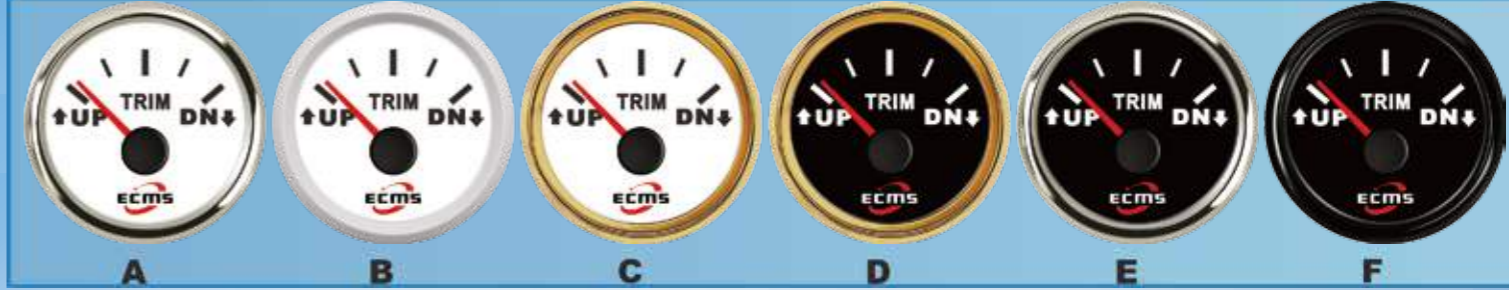
STYLE	P/N	Model	Installation Dia	Working Volt	Signal	Range	Bezel
A	800-00091	PMM2-WS-0-190	Φ52mm	9-32V	0-190Ω	UP-DN	316L
A	800-00096	PMM2-WS-167-10	Φ52mm	9-32V	167-10Ω	UP-DN	316L
B	800-20019	PMM2-WW-0-190	Φ52mm	9-32V	0-190Ω	UP-DN	316L
B	800-20020	PMM2-WW-167-10	Φ52mm	9-32V	167-10Ω	UP-DN	316L
C	800-00092	PMM2-WG-0-190	Φ52mm	9-32V	0-190Ω	UP-DN	316L
C	800-00097	PMM2-WG-167-10	Φ52mm	9-32V	167-10Ω	UP-DN	316L
D	800-00093	PMM2-BG-0-190	Φ52mm	9-32V	0-190Ω	UP-DN	316L
D	800-00098	PMM2-BG-167-10	Φ52mm	9-32V	167-10Ω	UP-DN	316L
E	800-00094	PMM2-BS-0-190	Φ52mm	9-32V	0-190Ω	UP-DN	316L
E	800-00099	PMM2-BS-167-10	Φ52mm	9-32V	167-10Ω	UP-DN	316L
F	800-00095	PMM2-BN-0-190	Φ52mm	9-32V	0-190Ω	UP-DN	316L
F	800-00100	PMM2-BN-167-10	Φ52mm	9-32V	167-10Ω	UP-DN	316L

Trim Gauge



STYLE	P/N	Model	Installation Dia	Working Volt	Signal	Range	Bezel
A	800-00081	PMM2-WS-0-190	Φ52mm	9-32V	0-190Ω	UP-DN	316L
A	800-00086	PMM2-WS-167-10	Φ52mm	9-32V	167-10Ω	UP-DN	316L
B	800-20017	PMM2-WW-0-190	Φ52mm	9-32V	0-190Ω	UP-DN	316L
B	800-20018	PMM2-WW-167-10	Φ52mm	9-32V	167-10Ω	UP-DN	316L
C	800-00082	PMM2-WG-0-190	Φ52mm	9-32V	0-190Ω	UP-DN	316L
C	800-00087	PMM2-WG-167-10	Φ52mm	9-32V	167-10Ω	UP-DN	316L
D	800-00083	PMM2-BG-0-190	Φ52mm	9-32V	0-190Ω	UP-DN	316L
D	800-00088	PMM2-BG-167-10	Φ52mm	9-32V	167-10Ω	UP-DN	316L
E	800-00084	PMM2-BS-0-190	Φ52mm	9-32V	0-190Ω	UP-DN	316L
E	800-00089	PMM2-BS-167-10	Φ52mm	9-32V	167-10Ω	UP-DN	316L
F	800-00085	PMM2-BN-0-190	Φ52mm	9-32V	0-190Ω	UP-DN	316L
F	800-00090	PMM2-BN-167-10	Φ52mm	9-32V	167-10Ω	UP-DN	316L

Trim Gauge



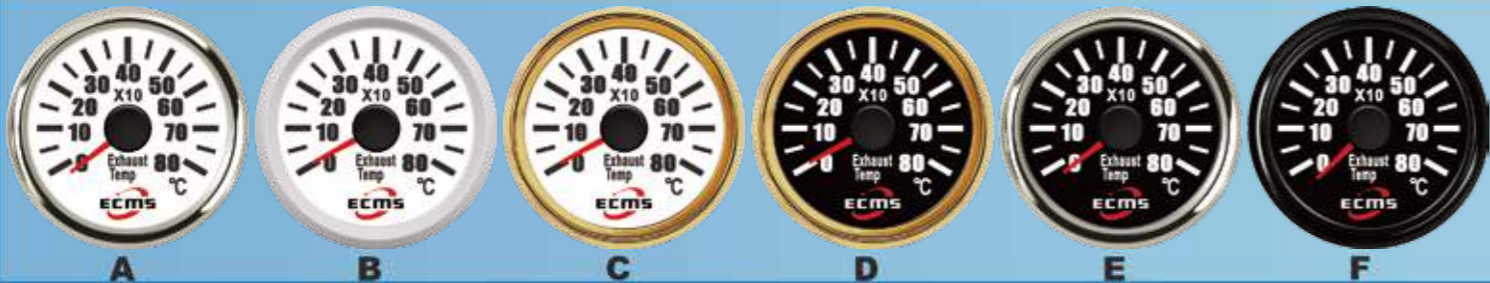
STYLE	P/N	Model	Installation Dia	Working Volt	Signal	Range	Bezel
A	800-00071	PMM2-WS-0-190	Φ52mm	9-32V	0-190Ω	UP-DN	316L
A	800-00076	PMM2-WS-167-10	Φ52mm	9-32V	167-10Ω	UP-DN	316L
B	800-20015	PMM2-WW-0-190	Φ52mm	9-32V	0-190Ω	UP-DN	316L
B	800-20016	PMM2-WW-167-10	Φ52mm	9-32V	167-10Ω	UP-DN	316L
C	800-00072	PMM2-WG-0-190	Φ52mm	9-32V	0-190Ω	UP-DN	316L
C	800-00077	PMM2-WG-167-10	Φ52mm	9-32V	167-10Ω	UP-DN	316L
D	800-00073	PMM2-BG-0-190	Φ52mm	9-32V	0-190Ω	UP-DN	316L
D	800-00078	PMM2-BG-167-10	Φ52mm	9-32V	167-10Ω	UP-DN	316L
E	800-00074	PMM2-BS-0-190	Φ52mm	9-32V	0-190Ω	UP-DN	316L
E	800-00079	PMM2-BS-167-10	Φ52mm	9-32V	167-10Ω	UP-DN	316L
F	800-00075	PMM2-BN-0-190	Φ52mm	9-32V	0-190Ω	UP-DN	316L
F	800-00080	PMM2-BN-167-10	Φ52mm	9-32V	167-10Ω	UP-DN	316L

Amperemeter



STYLE	P/N	Model	Installation Dia	Working Volt	Signal	Range	Bezel
A	800-00106	PMA2-WS±80A	Φ52mm	9-32V	±75mV	±80A	316L
A	800-00116	PMA2-WS±150A	Φ52mm	9-32V	±75mV	±150A	316L
B	800-20022	PMA2-WW±80A	Φ52mm	9-32V	±75mV	±80A	316L
B	800-20024	PMA2-WW±150A	Φ52mm	9-32V	±75mV	±150A	316L
C	800-00107	PMA2-WG±80A	Φ52mm	9-32V	±75mV	±80A	316L
C	800-00117	PMA2-WG±150A	Φ52mm	9-32V	±75mV	±150A	316L
D	800-00108	PMA2-BG±80A	Φ52mm	9-32V	±75mV	±80A	316L
D	800-00118	PMA2-BG±150A	Φ52mm	9-32V	±75mV	±150A	316L
E	800-00109	PMA2-BS±80A	Φ52mm	9-32V	±75mV	±80A	316L
E	800-00119	PMA2-BS±150A	Φ52mm	9-32V	±75mV	±150A	316L
F	800-00110	PMA2-BN±80A	Φ52mm	9-32V	±75mV	±80A	316L
F	800-00120	PMA2-BN±150A	Φ52mm	9-32V	±75mV	±150A	316L

Exhaust Thermometer



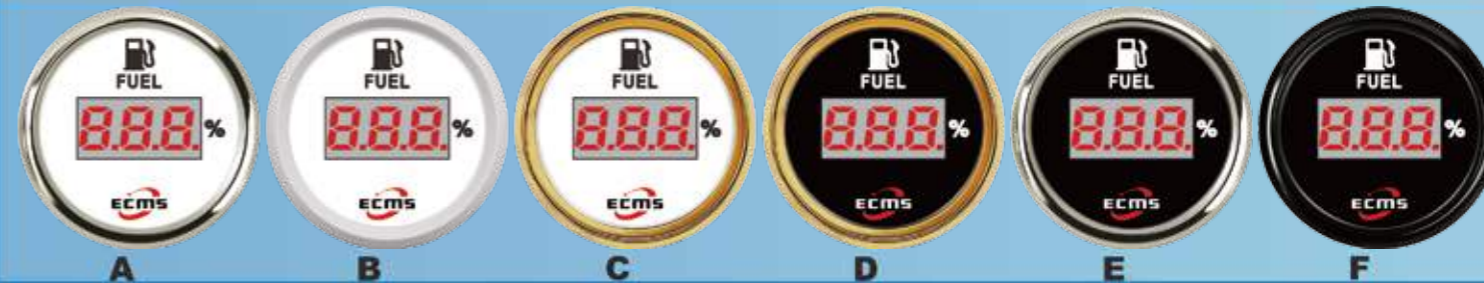
STYLE	P/N	Model	Installation Dia	Working Volt	Signal	Range	Bezel
A	800-00246	PMT2-WS-0-800	Φ 52mm	9-32V	K-Thermocouple	0-800℃	316L
B	800-20050	PMT2-VW-0-800	Φ 52mm	9-32V	K-Thermocouple	0-800℃	316L
C	800-00247	PMT2-WG-0-800	Φ 52mm	9-32V	K-Thermocouple	0-800℃	316L
D	800-00248	PMT2-BG-0-800	Φ 52mm	9-32V	K-Thermocouple	0-800℃	316L
E	800-00249	PMT2-BS-0-800	Φ 52mm	9-32V	K-Thermocouple	0-800℃	316L
F	800-00250	PMT2-BN-0-800	Φ 52mm	9-32V	K-Thermocouple	0-800℃	316L

Rudder Angle Indicator



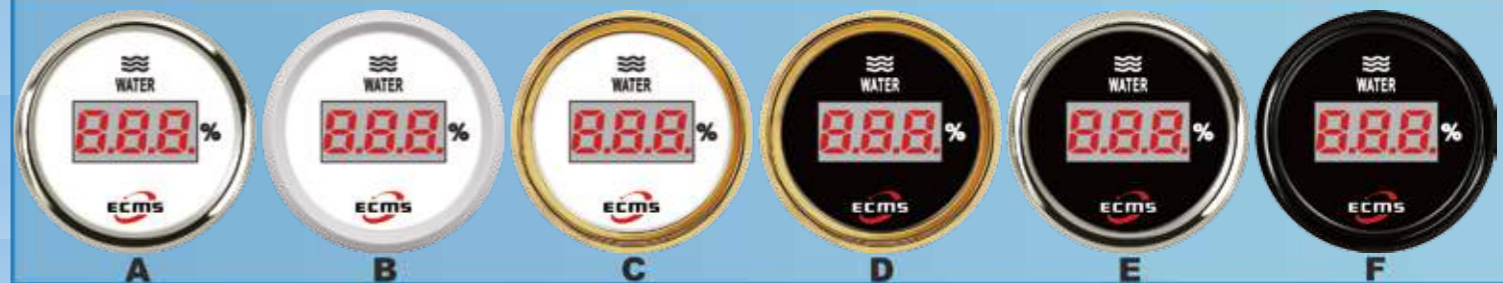
STYLE	P/N	Model	Installation Dia	Working Volt	Signal	Range	Bezel
A	800-00066	PMR2-WS-0-190	Φ 52mm	9-32V	190-0Ω	STBD-PORT	316L
A	800-00196	PMR2-WS-0-1K	Φ 52mm	9-32V	1K-0Ω	STBD-PORT	316L
B	800-20014	PMR2-VW-0-190	Φ 52mm	9-32V	190-0Ω	STBD-PORT	316L
B	800-20040	PMR2-VW-0-1K	Φ 52mm	9-32V	1K-0Ω	STBD-PORT	316L
C	800-00067	PMR2-WG-0-190	Φ 52mm	9-32V	190-0Ω	STBD-PORT	316L
C	800-00197	PMR2-WG-00-1K	Φ 52mm	9-32V	1K-0Ω	STBD-PORT	316L
D	800-00068	PMR2-BG-0-190	Φ 52mm	9-32V	190-0Ω	STBD-PORT	316L
D	800-00198	PMR2-BG-00-1K	Φ 52mm	9-32V	1K-0Ω	STBD-PORT	316L
E	800-00069	PMR2-BS-0-190	Φ 52mm	9-32V	190-0Ω	STBD-PORT	316L
E	800-00199	PMR2-BS-0-1K	Φ 52mm	9-32V	1K-0Ω	STBD-PORT	316L
F	800-00070	PMR2-BN-0-190	Φ 52mm	9-32V	190-0Ω	STBD-PORT	316L
F	800-00200	PMR2-BN-0-1K	Φ 52mm	9-32V	1K-0Ω	STBD-PORT	316L

Fuel Level Gauge



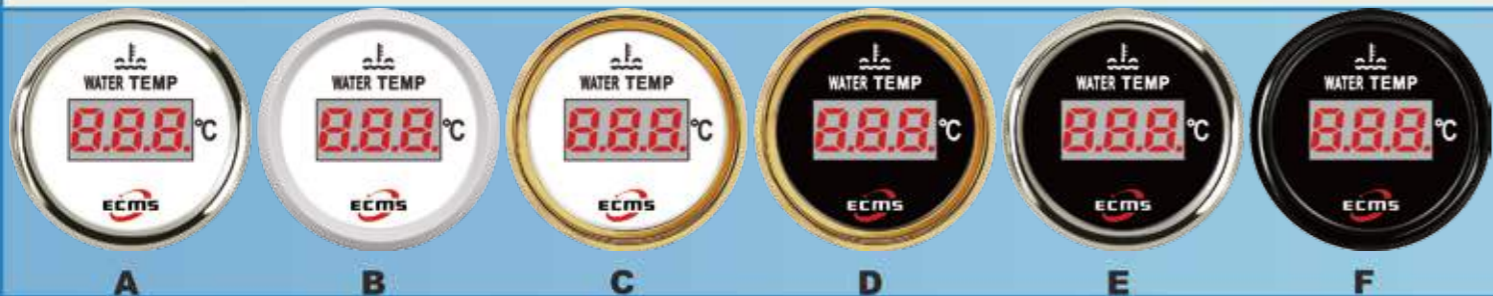
STYLE	P/N	Model	Installation Dia	Working Volt	Signal	Range	Bezel
A	800-00121	PEF2-WS-0-190	Φ 52mm	9-32V	0-190Ω	0-100%	316L
A	800-00126	PEF2-WS-240-33	Φ 52mm	9-32V	240-33Ω	0-100%	316L
B	800-20025	PEF2-VW-0-190	Φ 52mm	9-32V	0-190Ω	0-100%	316L
B	800-20026	PEF2-VW-240-33	Φ 52mm	9-32V	240-33Ω	0-100%	316L
C	800-00122	PEF2-WG-0-190	Φ 52mm	9-32V	0-190Ω	0-100%	316L
C	800-00127	PEF2-WG-240-33	Φ 52mm	9-32V	240-33Ω	0-100%	316L
D	800-00123	PEF2-BG-0-190	Φ 52mm	9-32V	0-190Ω	0-100%	316L
D	800-00128	PEF2-BG-240-33	Φ 52mm	9-32V	240-33Ω	0-100%	316L
E	800-00124	PEF2-BS-0-190	Φ 52mm	9-32V	0-190Ω	0-100%	316L
E	800-00129	PEF2-BS-240-33	Φ 52mm	9-32V	240-33Ω	0-100%	316L
F	800-00125	PEF2-BN-0-190	Φ 52mm	9-32V	0-190Ω	0-100%	316L
F	800-00130	PEF2-BN-240-33	Φ 52mm	9-32V	240-33Ω	0-100%	316L

Water Level Gauge



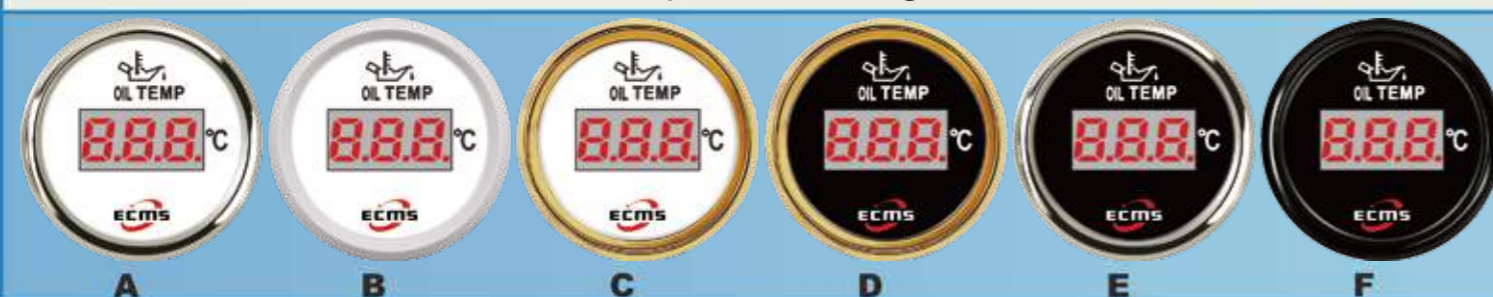
STYLE	P/N	Model	Installation Dia	Working Volt	Signal	Range	Bezel
A	800-00211	PEW2-WS-0-190	Φ 52mm	9-32V	0-190Ω	0-100%	316L
A	800-00216	PEW2-WS-240-33	Φ 52mm	9-32V	240-33Ω	0-100%	316L
B	800-20043	PEW2-VW-0-190	Φ 52mm	9-32V	0-190Ω	0-100%	316L
B	800-20044	PEW2-VW-240-33	Φ 52mm	9-32V	240-33Ω	0-100%	316L
C	800-00212	PEW2-WG-0-190	Φ 52mm	9-32V	0-190Ω	0-100%	316L
C	800-00217	PEW2-WG-240-33	Φ 52mm	9-32V	240-33Ω	0-100%	316L
D	800-00213	PEW2-BG-0-190	Φ 52mm	9-32V	0-190Ω	0-100%	316L
D	800-00218	PEW2-BG-240-33	Φ 52mm	9-32V	240-33Ω	0-100%	316L
E	800-00214	PEW2-BS-0-190	Φ 52mm	9-32V	0-190Ω	0-100%	316L
E	800-00219	PEW2-BS-240-33	Φ 52mm	9-32V	240-33Ω	0-100%	316L
F	800-00215	PEW2-BN-0-190	Φ 52mm	9-32V	0-190Ω	0-100%	316L
F	800-00220	PEW2-BN-240-33	Φ 52mm	9-32V	240-33Ω	0-100%	316L

Water Temperature Gauge



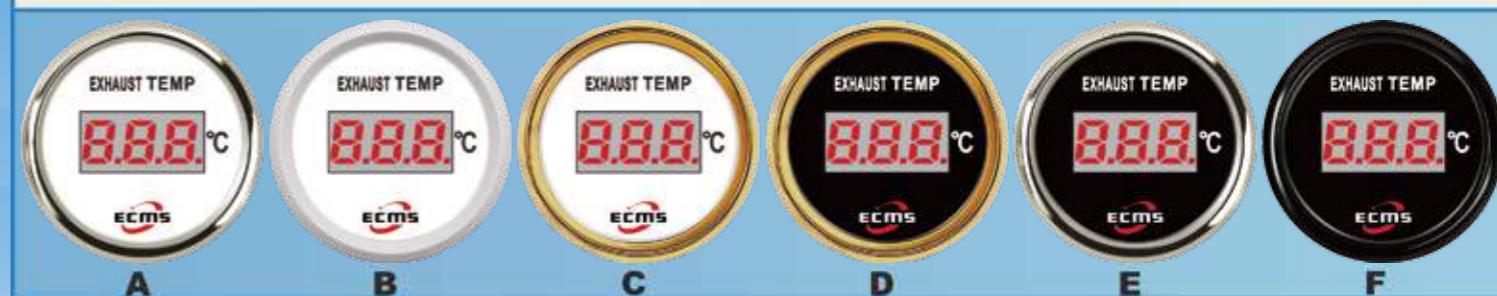
STYLE	P/N	Model	Installation Dia	Working Volt	Signal	Range	Bezel
A	800-00131	PET2-WS-40-120	Φ52mm	9-32V	287.4-22.4Ω	40-120℃	316L
B	800-20027	PET2-WW-40-120	Φ52mm	9-32V	287.4-22.4Ω	40-120℃	316L
C	800-00132	PET2-WG-40-120	Φ52mm	9-32V	287.4-22.4Ω	40-120℃	316L
D	800-00133	PET2-BG-40-120	Φ52mm	9-32V	287.4-22.4Ω	40-120℃	316L
E	800-00134	PET2-BS-40-120	Φ52mm	9-32V	287.4-22.4Ω	40-120℃	316L
F	800-00135	PET2-BN-40-120	Φ52mm	9-32V	287.4-22.4Ω	40-120℃	316L

Oil Temperature Gauge



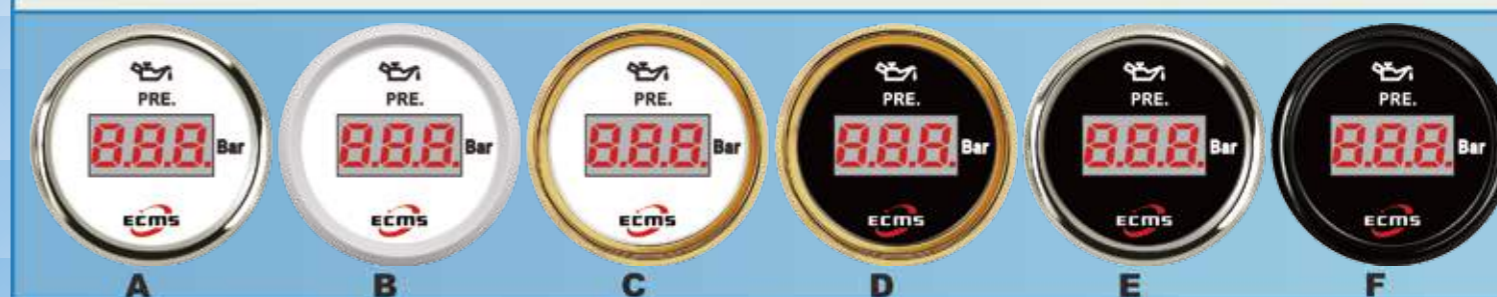
STYLE	P/N	Model	Installation Dia	Working Volt	Signal	Range	Bezel
A	800-00136	PET2-WS-50-150	Φ52mm	9-32V	361-19Ω	50-150℃	316L
B	800-20028	PET2-WW-50-150	Φ52mm	9-32V	361-19Ω	50-150℃	316L
C	800-00137	PET2-WG-50-150	Φ52mm	9-32V	361-19Ω	50-150℃	316L
D	800-00138	PET2-BG-50-150	Φ52mm	9-32V	361-19Ω	50-150℃	316L
E	800-00139	PET2-BS-50-150	Φ52mm	9-32V	361-19Ω	50-150℃	316L
F	800-00140	PET2-BN-50-150	Φ52mm	9-32V	361-19Ω	50-150℃	316L

Exhaust Thermometer



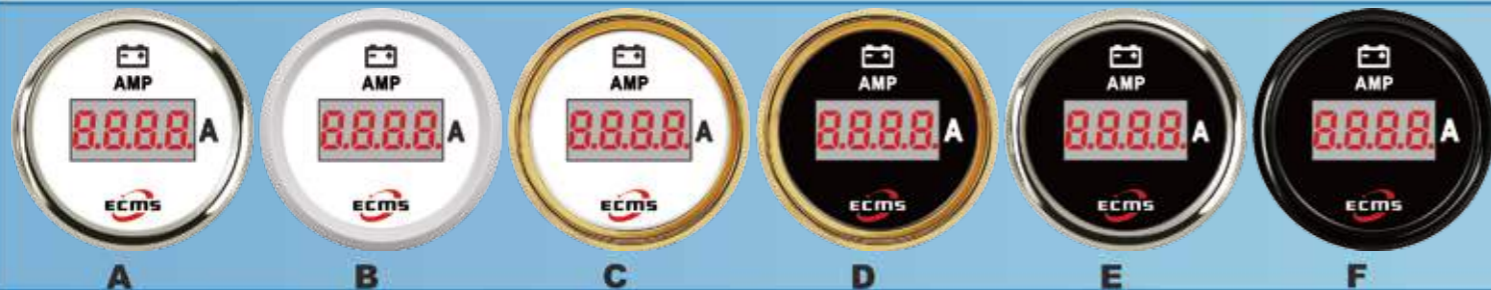
STYLE	P/N	Model	Installation Dia	Working Volt	Signal	Range	Bezel
A	800-00251	PET2-WS-0-800	Φ52mm	9-32V	K-Thermocouple	0-800℃	316L
B	800-20051	PET2-WW-0-800	Φ52mm	9-32V	K-Thermocouple	0-800℃	316L
C	800-00252	PET2-WG-0-800	Φ52mm	9-32V	K-Thermocouple	0-800℃	316L
D	800-00253	PET2-BG-0-800	Φ52mm	9-32V	K-Thermocouple	0-800℃	316L
E	800-00254	PET2-BS-0-800	Φ52mm	9-32V	K-Thermocouple	0-800℃	316L
F	800-00255	PET2-BN-0-800	Φ52mm	9-32V	K-Thermocouple	0-800℃	316L

Pressure Gauge



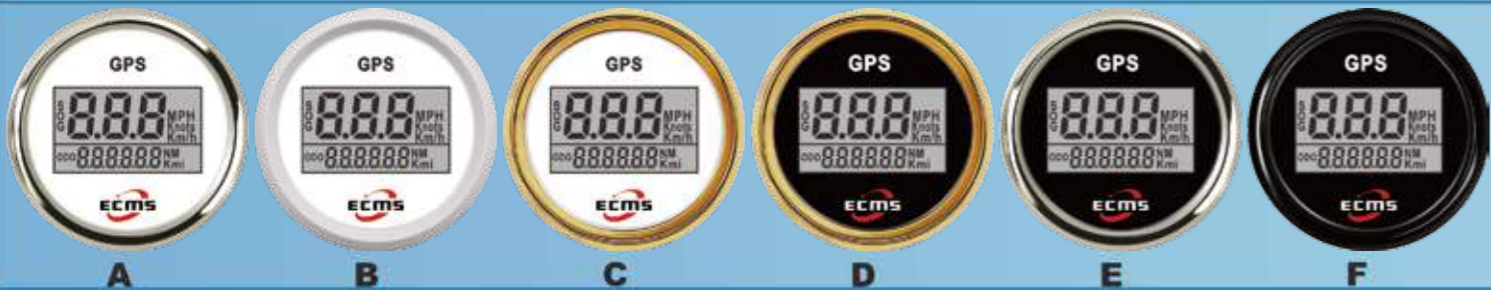
STYLE	P/N	Model	Installation Dia	Working Volt	Signal	Range	Bezel
A	800-00141	PEP2-WS-0-5	Φ52mm	9-32V	10-184Ω	0-5Bar	316L
A	800-00146	PEP2-WS-0-10	Φ52mm	9-32V	10-184Ω	0-10Bar	316L
B	800-20029	PEP2-WW-0-5	Φ52mm	9-32V	10-184Ω	0-5Bar	316L
B	800-20030	PEP2-WW-0-10	Φ52mm	9-32V	10-184Ω	0-10Bar	316L
C	800-00142	PEP2-WG-0-5	Φ52mm	9-32V	10-184Ω	0-5Bar	316L
C	800-00147	PEP2-WG-0-10	Φ52mm	9-32V	10-184Ω	0-10Bar	316L
D	800-00143	PEP2-BG-0-5	Φ52mm	9-32V	10-184Ω	0-5Bar	316L
D	800-00148	PEP2-BG-0-10	Φ52mm	9-32V	10-184Ω	0-10Bar	316L
E	800-00144	PEP2-BS-0-5	Φ52mm	9-32V	10-184Ω	0-5Bar	316L
E	800-00149	PEP2-BS-0-10	Φ52mm	9-32V	10-184Ω	0-10Bar	316L
F	800-00145	PEP2-BN-0-5	Φ52mm	9-32V	10-184Ω	0-5Bar	316L
F	800-00150	PEP2-BN-0-10	Φ52mm	9-32V	10-184Ω	0-10Bar	316L

Amperemeter



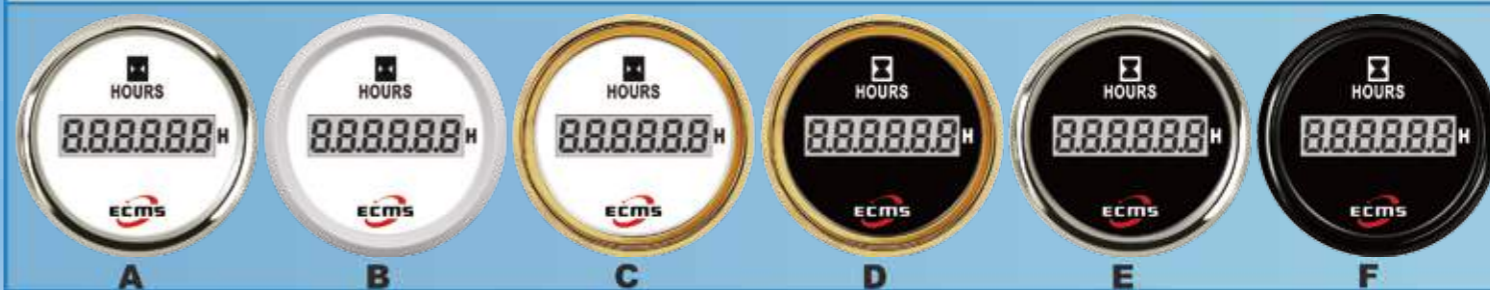
STYLE	P/N	Model	Installation Dia	Working Volt	Signal	Range	Bezel
A	800-00161	PEA2-WS±80A	Φ52mm	9-32V	±75mV	±150A	316L
A	800-00166	PEA2-WS±150A	Φ52mm	9-32V	±75mV	±150A	316L
B	800-20033	PEA2-VW±80A	Φ52mm	9-32V	±75mV	±150A	316L
B	800-20034	PEA2-VW±150A	Φ52mm	9-32V	±75mV	±150A	316L
C	800-00162	PEA2-WG±80A	Φ52mm	9-32V	±75mV	±150A	316L
C	800-00167	PEA2-WG±150A	Φ52mm	9-32V	±75mV	±150A	316L
D	800-00163	PEA2-BG±80A	Φ52mm	9-32V	±75mV	±150A	316L
D	800-00168	PEA2-BG±150A	Φ52mm	9-32V	±75mV	±150A	316L
E	800-00164	PEA2-BS±80A	Φ52mm	9-32V	±75mV	±150A	316L
E	800-00169	PEA2-BS±150A	Φ52mm	9-32V	±75mV	±150A	316L
F	800-00165	PEA2-BN±80A	Φ52mm	9-32V	±75mV	±150A	316L
F	800-00170	PEA2-BN±150A	Φ52mm	9-32V	±75mV	±150A	316L

GPS Speedometer



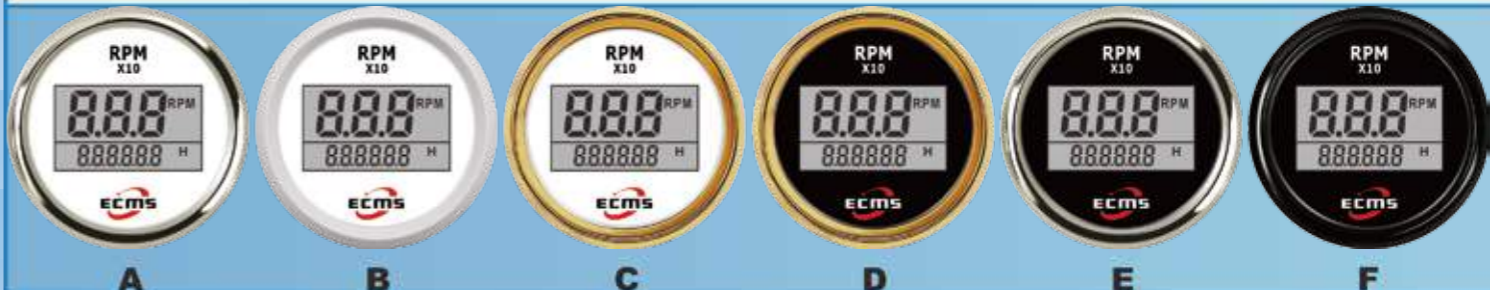
STYLE	P/N	Model	Installation Dia	Working Volt	Signal	Range	Bezel
A	800-00171	PLG2-WS-GPS	Φ52mm	9-32V	GPS	0-999	316L
B	800-20035	PLG2-VW-GPS	Φ52mm	9-32V	GPS	0-999	316L
C	800-00172	PLG2-WG-GPS	Φ52mm	9-32V	GPS	0-999	316L
D	800-00173	PLG2-BG-GPS	Φ52mm	9-32V	GPS	0-999	316L
E	800-00174	PLG2-BS-GPS	Φ52mm	9-32V	GPS	0-999	316L
F	800-00175	PLG2-BN-GPS	Φ52mm	9-32V	GPS	0-999	316L

Hourmeter



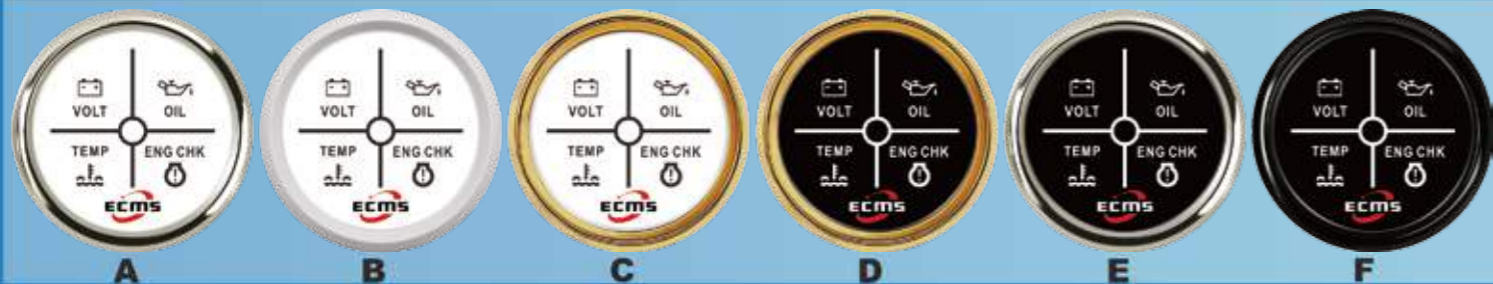
STYLE	P/N	Model	Installation Dia	Working Volt	Signal	Range	Bezel
A	800-00186	PLH2-WS-HS	Φ52mm	9-32V	NULL	0-99999.9	316L
B	800-20038	PLH2-VW-HS	Φ52mm	9-32V	NULL	0-99999.9	316L
C	800-00187	PLH2-WG-HS	Φ52mm	9-32V	NULL	0-99999.9	316L
D	800-00188	PLH2-BG-HS	Φ52mm	9-32V	NULL	0-99999.9	316L
E	800-00189	PLH2-BS-HS	Φ52mm	9-32V	NULL	0-99999.9	316L
F	800-00190	PLH2-BN-HS	Φ52mm	9-32V	NULL	0-99999.9	316L

Tachometer



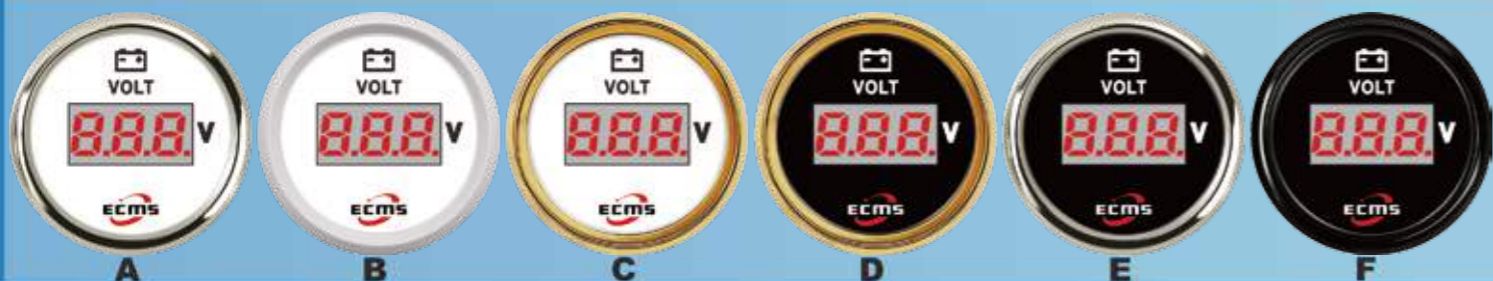
STYLE	P/N	Model	Installation Dia	Working Volt	Signal	Range	Bezel
A	800-00261	PLT2-WS-RPM	Φ52mm	9-32V	Pulse	0-9990	316L
B	800-20053	PLT2-VW-RPM	Φ52mm	9-32V	Pulse	0-9990	316L
C	800-00262	PLT2-WG-RPM	Φ52mm	9-32V	Pulse	0-9990	316L
D	800-00263	PLT2-BG-RPM	Φ52mm	9-32V	Pulse	0-9990	316L
E	800-00264	PLT2-BS-RPM	Φ52mm	9-32V	Pulse	0-9990	316L
F	800-00265	PLT2-BN-RPM	Φ52mm	9-32V	Pulse	0-9990	316L

4LED Alarm Gauge



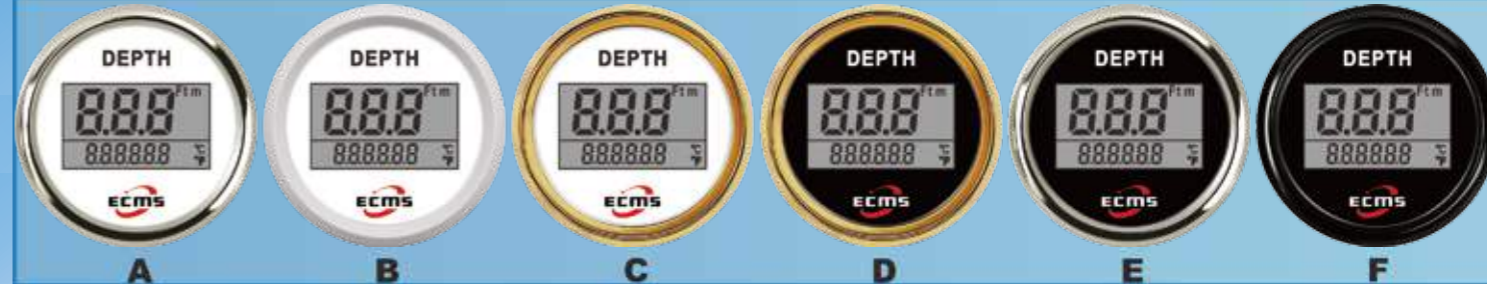
STYLE	P/N	Model	Installation Dia	Working Volt	Signal	Range	Bezel
<b>A</b>	800-00256	PDA2-WS-4LED	Φ52mm	9-32V	SWITCH		316L
<b>B</b>	800-20052	PDA2-WW-4LED	Φ52mm	9-32V	SWITCH		316L
<b>C</b>	800-00257	PDA2-WG-4LED	Φ52mm	9-32V	SWITCH		316L
<b>D</b>	800-00258	PDA2-BG-4LED	Φ52mm	9-32V	SWITCH		316L
<b>E</b>	800-00259	PDA2-BS-4LED	Φ52mm	9-32V	SWITCH		316L
<b>F</b>	800-00260	PDA2-BN-4LED	Φ52mm	9-32V	SWITCH		316L

Voltmeter



STYLE	P/N	Model	Installation Dia	Working Volt	Signal	Range	Bezel
<b>A</b>	800-00151	PEV2-WS-8-32	Φ52mm	9-32V	8-32V	8-32V	316L
<b>B</b>	800-20031	PEV2-WW-8-32	Φ52mm	9-32V	8-32V	8-32V	316L
<b>C</b>	800-00152	PEV2-WG-8-32	Φ52mm	9-32V	8-32V	8-32V	316L
<b>D</b>	800-00153	PEV2-BG-8-32	Φ52mm	9-32V	8-32V	8-32V	316L
<b>E</b>	800-00154	PEV2-BS-8-32	Φ52mm	9-32V	8-32V	8-32V	316L
<b>F</b>	800-00155	PEV2-BN-8-32	Φ52mm	9-32V	8-32V	8-32V	316L

DEPTH Gauge



STYLE	P/N	Model	Installation Dia	Working Volt	Signal	Range	Bezel
<b>A</b>	800-00241	PLD2-WS-FTM	Φ52mm	9-32V	Transducer	1-70m	316L
<b>B</b>	800-20049	PLD2-WW-FTM	Φ52mm	9-32V	Transducer	1-70m	316L
<b>C</b>	800-00242	PLD2-WG-FTM	Φ52mm	9-32V	Transducer	1-70m	316L
<b>D</b>	800-00243	PLD2-BG-FTM	Φ52mm	9-32V	Transducer	1-70m	316L
<b>E</b>	800-00244	PLD2-BS-FTM	Φ52mm	9-32V	Transducer	1-70m	316L
<b>F</b>	800-00245	PLD2-BN-FTM	Φ52mm	9-32V	Transducer	1-70m	316L

GPS Speedometer

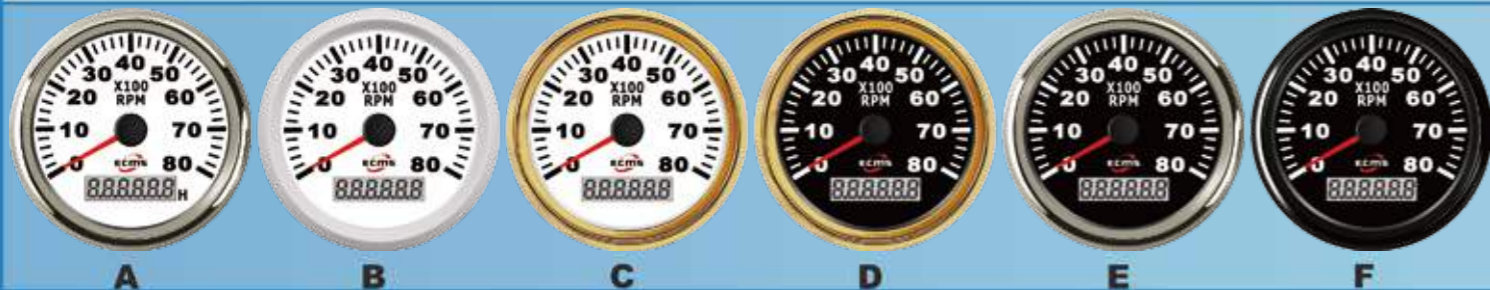
The user can adjust speed unit



STYLE	P/N	Model	Installation Dia	Working Volt	Signal	Range	Bezel
<b>A</b>	900-00031	PLG3-WS-GPS	Φ85mm	9-32V	GPS	0-999	316L
<b>B</b>	900-20007	PLG3-WW-GPS	Φ85mm	9-32V	GPS	0-999	316L
<b>C</b>	900-00032	PLG3-WG-GPS	Φ85mm	9-32V	GPS	0-999	316L
<b>D</b>	900-00033	PLG3-BG-GPS	Φ85mm	9-32V	GPS	0-999	316L
<b>E</b>	900-00034	PLG3-BS-GPS	Φ85mm	9-32V	GPS	0-999	316L
<b>F</b>	900-00035	PLG3-BN-GPS	Φ85mm	9-32V	GPS	0-999	316L

Tachometer

Speed Ratio:1-300



STYLE	P/N	Model	Installation Dia	Working Volt	Signal	Range	Bezel
A	900-00001	PMH3-WS-3K	Φ85mm	9-32V	Pulse	3KRPM	316L
A	900-00006	PMH3-WS-4K	Φ85mm	9-32V	Pulse	4KRPM	316L
A	900-00011	PMH3-WS-6K	Φ85mm	9-32V	Pulse	6KRPM	316L
A	900-00021	PMH3-WS-7K	Φ85mm	9-32V	Pulse	7KRPM	316L
A	900-00016	PMH3-WS-8K	Φ85mm	9-32V	Pulse	8KRPM	316L
B	900-20001	PMH3-WW-3K	Φ85mm	9-32V	Pulse	3KRPM	316L
B	900-20002	PMH3-WW-4K	Φ85mm	9-32V	Pulse	4KRPM	316L
B	900-20003	PMH3-WW-6K	Φ85mm	9-32V	Pulse	6KRPM	316L
B	900-20005	PMH3-WW-7K	Φ85mm	9-32V	Pulse	7KRPM	316L
B	900-20004	PMH3-WW-8K	Φ85mm	9-32V	Pulse	8KRPM	316L
C	900-00002	PMH3-WG-3K	Φ85mm	9-32V	Pulse	3KRPM	316L
C	900-00007	PMH3-WG-4K	Φ85mm	9-32V	Pulse	4KRPM	316L
C	900-00012	PMH3-WG-6K	Φ85mm	9-32V	Pulse	6KRPM	316L
C	900-00022	PMH3-WG-7K	Φ85mm	9-32V	Pulse	7KRPM	316L
C	900-00017	PMH3-WG-8K	Φ85mm	9-32V	Pulse	8KRPM	316L
D	900-00003	PMH3-BG-3K	Φ85mm	9-32V	Pulse	3KRPM	316L
D	900-00008	PMH3-BG-4K	Φ85mm	9-32V	Pulse	4KRPM	316L
D	900-00013	PMH3-BG-6K	Φ85mm	9-32V	Pulse	6KRPM	316L
D	900-00023	PMH3-BG-7K	Φ85mm	9-32V	Pulse	7KRPM	316L
D	900-00018	PMH3-BG-8K	Φ85mm	9-32V	Pulse	8KRPM	316L
E	900-00004	PMH3-BS-3K	Φ85mm	9-32V	Pulse	3KRPM	316L
E	900-00009	PMH3-BS-4K	Φ85mm	9-32V	Pulse	4KRPM	316L
E	900-00014	PMH3-BS-6K	Φ85mm	9-32V	Pulse	6KRPM	316L
E	900-00024	PMH3-BS-7K	Φ85mm	9-32V	Pulse	7KRPM	316L
E	900-00019	PMH3-BS-8K	Φ85mm	9-32V	Pulse	8KRPM	316L
F	900-00005	PMH3-BN-3K	Φ85mm	9-32V	Pulse	3KRPM	316L
F	900-00010	PMH3-BN-4K	Φ85mm	9-32V	Pulse	4KRPM	316L
F	900-00015	PMH3-BN-6K	Φ85mm	9-32V	Pulse	6KRPM	316L
F	900-00025	PMH3-BN-7K	Φ85mm	9-32V	Pulse	7KRPM	316L
F	900-00020	PMH3-BN-8K	Φ85mm	9-32V	Pulse	8KRPM	316L

GPS Speedometer



STYLE	P/N	Model	Installation Dia	Working Volt	Signal	Range	Bezel
A	900-00076	PMG3-WS-120KL	Φ85mm	9-32V	GPS	120km/h	316L
A	900-00081	PMG3-WS-200KL	Φ85mm	9-32V	GPS	200km/h	316L
B	900-20016	PMG3-WW-120KL	Φ85mm	9-32V	GPS	120km/h	316L
B	900-20017	PMG3-WW-200KL	Φ85mm	9-32V	GPS	200km/h	316L
C	900-00077	PMG3-WG-120KL	Φ85mm	9-32V	GPS	120km/h	316L
C	900-00082	PMG3-WG-200KL	Φ85mm	9-32V	GPS	200km/h	316L
D	900-00078	PMG3-BG-120KL	Φ85mm	9-32V	GPS	120km/h	316L
D	900-00083	PMG3-BG-200KL	Φ85mm	9-32V	GPS	200km/h	316L
E	900-00079	PMG3-BS-120KL	Φ85mm	9-32V	GPS	120km/h	316L
E	900-00084	PMG3-BS-200KL	Φ85mm	9-32V	GPS	200km/h	316L
F	900-00080	PMG3-BN-120KL	Φ85mm	9-32V	GPS	120km/h	316L
F	900-00085	PMG3-BN-200KL	Φ85mm	9-32V	GPS	200km/h	316L

GPS Speedometer



STYLE	P/N	Model	Installation Dia	Working Volt	Signal	Range	Bezel
A	900-00141	PMG3-WS-200ML	Φ85mm	9-32V	GPS	200MPH	316L
B	900-20030	PMG3-WW-200ML	Φ85mm	9-32V	GPS	200MPH	316L
C	900-00142	PMG3-WG-200ML	Φ85mm	9-32V	GPS	200MPH	316L
D	900-00143	PMG3-BG-200ML	Φ85mm	9-32V	GPS	200MPH	316L
E	900-00144	PMG3-BS-200ML	Φ85mm	9-32V	GPS	200MPH	316L
F	900-00145	PMG3-BN-200ML	Φ85mm	9-32V	GPS	200MPH	316L



GPS Speedometer



STYLE	P/N	Model	Installation Dia	Working Volt	Signal	Range	Bezel
A	900-00061	PMG3-WS-60KL	Φ 85mm	9-32V	GPS	60km/h	316L
A	900-00066	PMG3-WS-120KL	Φ 85mm	9-32V	GPS	120km/h	316L
B	900-20013	PMG3-WW-60KL	Φ 85mm	9-32V	GPS	60km/h	316L
B	900-20014	PMG3-WW-120KL	Φ 85mm	9-32V	GPS	120km/h	316L
C	900-00062	PMG3-WG-60KL	Φ 85mm	9-32V	GPS	60km/h	316L
C	900-00067	PMG3-WG-120KL	Φ 85mm	9-32V	GPS	120km/h	316L
D	900-00063	PMG3-BG-60KL	Φ 85mm	9-32V	GPS	60km/h	316L
D	900-00068	PMG3-BG-120KL	Φ 85mm	9-32V	GPS	120km/h	316L
E	900-00064	PMG3-BS-60KL	Φ 85mm	9-32V	GPS	60km/h	316L
E	900-00069	PMG3-BS-120KL	Φ 85mm	9-32V	GPS	120km/h	316L
F	900-00065	PMG3-BN-60KL	Φ 85mm	9-32V	GPS	60km/h	316L
F	900-00070	PMG3-BN-120KL	Φ 85mm	9-32V	GPS	120km/h	316L

GPS Speedometer



STYLE	P/N	Model	Installation Dia	Working Volt	Signal	Range	Bezel
A	900-00051	PMG3-WS-35ML	Φ 85mm	9-32V	GPS	35MPH	316L
A	900-00056	PMG3-WS-80ML	Φ 85mm	9-32V	GPS	80MPH	316L
B	900-20011	PMG3-WW-35ML	Φ 85mm	9-32V	GPS	80MPH	316L
B	900-20012	PMG3-WW-80ML	Φ 85mm	9-32V	GPS	35MPH	316L
C	900-00052	PMG3-WG-35ML	Φ 85mm	9-32V	GPS	35MPH	316L
C	900-00057	PMG3-WG-80ML	Φ 85mm	9-32V	GPS	80MPH	316L
D	900-00053	PMG3-BG-35ML	Φ 85mm	9-32V	GPS	35MPH	316L
D	900-00058	PMG3-BG-80ML	Φ 85mm	9-32V	GPS	80MPH	316L
E	900-00054	PMG3-BS-35MLL	Φ 85mm	9-32V	GPS	35MPH	316L
E	900-00059	PMG3-BS-80ML	Φ 85mm	9-32V	GPS	80MPH	316L
F	900-00055	PMG3-BN-35ML	Φ 85mm	9-32V	GPS	35MPH	316L
F	900-00060	PMG3-BN-80ML	Φ 85mm	9-32V	GPS	80MPH	316L

GPS Speedometer



STYLE	P/N	Model	Installation Dia	Working Volt	Signal	Range	Bezel
A	900-00036	PMG3-WS-15NL	Φ 85mm	9-32V	GPS	15Knots	316L
A	900-00041	PMG3-WS-35NL	Φ 85mm	9-32V	GPS	35Knots	316L
A	900-00046	PMG3-WS-70NL	Φ 85mm	9-32V	GPS	70Knots	316L
B	900-20008	PMG3-WW-15NL	Φ 85mm	9-32V	GPS	15Knots	316L
B	900-20009	PMG3-WW-35NL	Φ 85mm	9-32V	GPS	35Knots	316L
B	900-20010	PMG3-WW-70NL	Φ 85mm	9-32V	GPS	70Knots	316L
C	900-00037	PMG3-WG-15NL	Φ 85mm	9-32V	GPS	15Knots	316L
C	900-00042	PMG3-WG-35NL	Φ 85mm	9-32V	GPS	35Knots	316L
C	900-00047	PMG3-WG-70NL	Φ 85mm	9-32V	GPS	70Knots	316L
D	900-00038	PMG3-BG-15NL	Φ 85mm	9-32V	GPS	15Knots	316L
D	900-00043	PMG3-BG-35NL	Φ 85mm	9-32V	GPS	35Knots	316L
D	900-00048	PMG3-BG-70NL	Φ 85mm	9-32V	GPS	70Knots	316L
E	900-00039	PMG3-BS-15NL	Φ 85mm	9-32V	GPS	15Knots	316L
E	900-00044	PMG3-BS-35NL	Φ 85mm	9-32V	GPS	35Knots	316L
E	900-00049	PMG3-BS-70NL	Φ 85mm	9-32V	GPS	70Knots	316L
F	900-00040	PMG3-BN-15NL	Φ 85mm	9-32V	GPS	15Knots	316L
F	900-00045	PMG3-BN-35NL	Φ 85mm	9-32V	GPS	35Knots	316L
F	900-00050	PMG3-BN-70NL	Φ 85mm	9-32V	GPS	70Knots	316L

GPS Speedometer

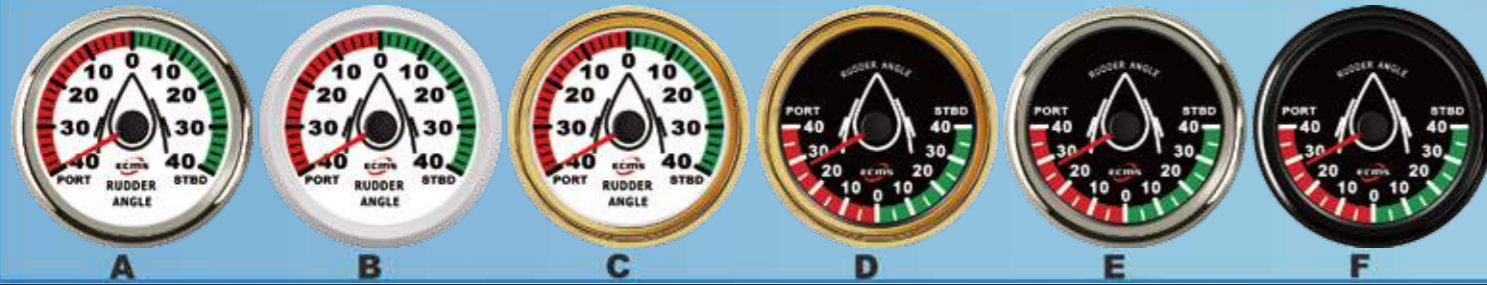


STYLE	P/N	Model	Installation Dia	Working Volt	Signal	Range	Bezel
A	900-00146	PMG3-WS-160ML	Φ 85mm	9-32V	GPS	160MPH	316L
B	900-20031	PMG3-WW-160ML	Φ 85mm	9-32V	GPS	160MPH	316L
C	900-00147	PMG3-WG-160ML	Φ 85mm	9-32V	GPS	160MPH	316L
D	900-00148	PMG3-BG-160ML	Φ 85mm	9-32V	GPS	160MPH	316L
E	900-00149	PMG3-BS-160ML	Φ 85mm	9-32V	GPS	160MPH	316L
F	900-00150	PMG3-BN-160ML	Φ 85mm	9-32V	GPS	160MPH	316L

900-00071-75

Rudder Angle meter

900-00086-90



STYLE	P/N	Model	Installation Dia	Working Volt	Signal	Range	Bezel
A	900-00071	PMR3-WS-0-190	Φ85mm	9-32V	0-190 Ω	STBD-PORT	316L
A	900-00086	PMR3-WS-0-190	Φ85mm	9-32V	0-190 Ω	STBD-PORT	316L
B	900-20015	PMR3-WW-0-190	Φ85mm	9-32V	0-190 Ω	STBD-PORT	316L
B	900-20018	PMR3-WW-0-190	Φ85mm	9-32V	0-190 Ω	STBD-PORT	316L
C	900-00072	PMR3-WG-0-190	Φ85mm	9-32V	0-190 Ω	STBD-PORT	316L
C	900-00087	PMR3-WG-0-190	Φ85mm	9-32V	0-190 Ω	STBD-PORT	316L
D	900-00073	PMR3-BG-0-190	Φ85mm	9-32V	0-190 Ω	STBD-PORT	316L
D	900-00088	PMR3-BG-0-190	Φ85mm	9-32V	0-190 Ω	STBD-PORT	316L
E	900-00074	PMR3-BS-0-190	Φ85mm	9-32V	0-190 Ω	STBD-PORT	316L
E	900-00089	PMR3-BS-0-190	Φ85mm	9-32V	0-190 Ω	STBD-PORT	316L
F	900-00075	PMR3-BN-0-190	Φ85mm	9-32V	0-190 Ω	STBD-PORT	316L
F	900-00090	PMR3-BN-0-190	Φ85mm	9-32V	0-190 Ω	STBD-PORT	316L

Multifunction Gauge-6(12V)



STYLE	P/N	Model	Installation Dia	Working Volt	Signal	Range	Bezel
A	900-00121	PMG3-WS-6C125	Φ85mm	8-16V	GPS,Pulse	5Bar	316L
A	900-00126	PMG3-WS-6C1210	Φ85mm	8-16V	GPS,Pulse	10Bar	316L
B	900-20025	PMG3-WW-6C125	Φ85mm	8-16V	GPS,Pulse	5Bar	316L
B	900-20027	PMG3-WW-6C1210	Φ85mm	8-16V	GPS,Pulse	10Bar	316L
C	900-00122	PMG3-WG-6C125	Φ85mm	8-16V	GPS,Pulse	5Bar	316L
C	900-00127	PMG3-WG-6C1210	Φ85mm	8-16V	GPS,Pulse	10Bar	316L
D	900-00123	PMG3-BG-6C125	Φ85mm	8-16V	GPS,Pulse	5Bar	316L
D	900-00128	PMG3-BG-6C1210	Φ85mm	8-16V	GPS,Pulse	10Bar	316L
E	900-00124	PMG3-BS-6C125	Φ85mm	8-16V	GPS,Pulse	5Bar	316L
E	900-00129	PMG3-BS-6C1210	Φ85mm	8-16V	GPS,Pulse	10Bar	316L
F	900-00125	PMG3-BN-6C125	Φ85mm	8-16V	GPS,Pulse	5Bar	316L
F	900-00130	PMG3-BN-6C1210	Φ85mm	8-16V	GPS,Pulse	10Bar	316L

Multifunction Gauge-3



STYLE	P/N	Model	Installation Dia	Working Volt	Signal	Range	Bezel
A	900-00116	PMG3-WS-3C	Φ85mm	9-32V	GPS		316L
B	900-20024	PMG3-WW-3C	Φ85mm	9-32V	GPS		316L
C	900-00117	PMG3-WG-3C	Φ85mm	9-32V	GPS		316L
D	900-00118	PMG3-BG-3C	Φ85mm	9-32V	GPS		316L
E	900-00119	PMG3-BS-3C	Φ85mm	9-32V	GPS		316L
F	900-00120	PMG3-BN-3C	Φ85mm	9-32V	GPS		316L

Multifunction Gauge-6(24V)



STYLE	P/N	Model	Installation Dia	Working Volt	Signal	Range	Bezel
A	900-00131	PMG3-WS-6C245	Φ85mm	18-32V	GPS,Pulse	5Bar	316L
A	900-00136	PMG3-WS-6C2410	Φ85mm	18-32V	GPS,Pulse	10Bar	316L
B	900-20028	PMG3-WW-6C245	Φ85mm	18-32V	GPS,Pulse	5Bar	316L
B	900-20029	PMG3-WW-6C2410	Φ85mm	18-32V	GPS,Pulse	10Bar	316L
C	900-00132	PMG3-WG-6C245	Φ85mm	18-32V	GPS,Pulse	5Bar	316L
C	900-00137	PMG3-WG-6C2410	Φ85mm	18-32V	GPS,Pulse	10Bar	316L
D	900-00133	PMG3-BG-6C245	Φ85mm	18-32V	GPS,Pulse	5Bar	316L
D	900-00138	PMG3-BG-6C2410	Φ85mm	18-32V	GPS,Pulse	10Bar	316L
E	900-00134	PMG3-BS-6C245	Φ85mm	18-32V	GPS,Pulse	5Bar	316L
E	900-00139	PMG3-BS-6C2410	Φ85mm	18-32V	GPS,Pulse	10Bar	316L
F	900-00135	PMG3-BN-6C245	Φ85mm	18-32V	GPS,Pulse	5Bar	316L
F	900-00140	PMG3-BN-6C2410	Φ85mm	18-32V	GPS,Pulse	10Bar	316L

Fuel Level Gauge



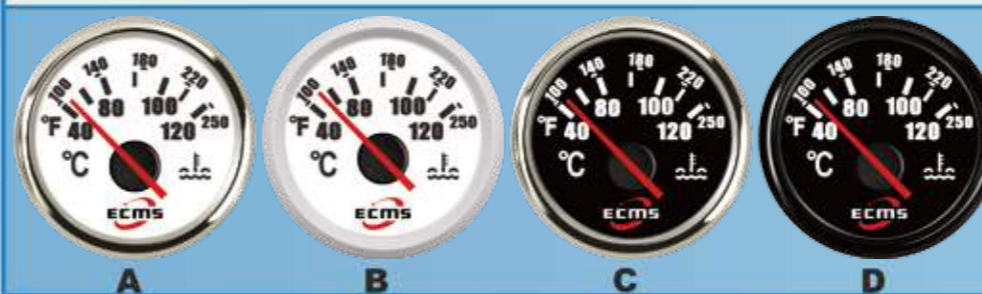
STYLE	P/N	Model	Installation Dia	Working Volt	Signal	Range	Bezel
A	801-00001	CMF2-WS-0-190	Φ52mm	9-32V	0-190Ω	E-F	316L
A	801-00004	CMF2-WS-240-33	Φ52mm	9-32V	240-33Ω	E-F	316L
B	801-20001	CMF2-WW-0-190	Φ52mm	9-32V	0-190Ω	E-F	316L
B	801-20002	CMF2-WW-240-33	Φ52mm	9-32V	240-33Ω	E-F	316L
C	801-00002	CMF2-BS-0-190	Φ52mm	9-32V	0-190Ω	E-F	316L
C	801-00005	CMF2-BS-240-33	Φ52mm	9-32V	240-33Ω	E-F	316L
D	801-00003	CMF2-BN-0-190	Φ52mm	9-32V	0-190Ω	E-F	316L
D	801-00006	CMF2-BN-240-33	Φ52mm	9-32V	240-33Ω	E-F	316L

Water Level Gauge



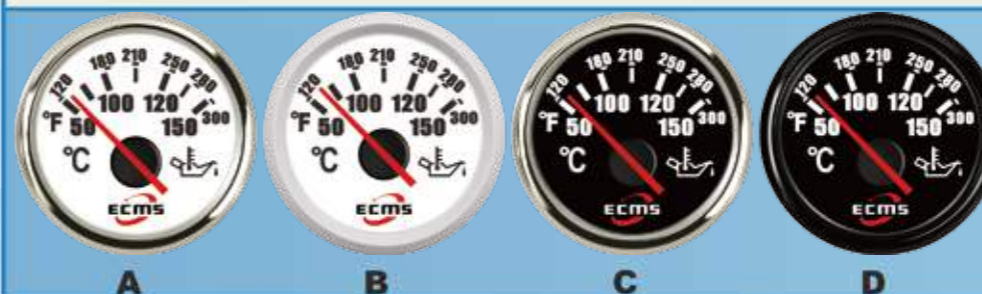
STYLE	P/N	Model	Installation Dia	Working Volt	Signal	Range	Bezel
A	801-00007	CMW2-WS-0-190	Φ52mm	9-32V	0-190Ω	E-F	316L
A	801-00010	CMW2-WS-240-33	Φ52mm	9-32V	240-33Ω	E-F	316L
B	801-20003	CMW2-WW-0-190	Φ52mm	9-32V	0-190Ω	E-F	316L
B	801-20004	CMW2-WW-240-33	Φ52mm	9-32V	240-33Ω	E-F	316L
C	801-00008	CMW2-BS-0-190	Φ52mm	9-32V	0-190Ω	E-F	316L
C	801-00011	CMW2-BS-240-33	Φ52mm	9-32V	240-33Ω	E-F	316L
D	801-00009	CMW2-BN-0-190	Φ52mm	9-32V	0-190Ω	E-F	316L
D	801-00012	CMW2-BN-240-33	Φ52mm	9-32V	240-33Ω	E-F	316L

Water Temperature Gauge



STYLE	P/N	Model	Installation Dia	Working Volt	Signal	Range	Bezel
A	801-00013	CMT2-WS-40-120	Φ52mm	9-32V	287.4-22.4Ω	40-120°C	316L
B	801-20005	CMT2-WW-40-120	Φ52mm	9-32V	287.4-22.4Ω	40-120°C	316L
C	801-00014	CMT2-BS-40-120	Φ52mm	9-32V	287.4-22.4Ω	40-120°C	316L
D	801-00015	CMT2-BN-40-120	Φ52mm	9-32V	287.4-22.4Ω	40-120°C	316L

Oil Temperature Gauge



STYLE	P/N	Model	Installation Dia	Working Volt	Signal	Range	Bezel
A	801-00016	CMT2-WS-50-150	Φ52mm	9-32V	361-19Ω	50-150°C	316L
B	801-20006	CMT2-WW-50-150	Φ52mm	9-32V	361-19Ω	50-150°C	316L
C	801-00017	CMT2-BS-50-150	Φ52mm	9-32V	361-19Ω	50-150°C	316L
D	801-00018	CMT2-BN-50-150	Φ52mm	9-32V	361-19Ω	50-150°C	316L

Pressure Gauge



STYLE	P/N	Model	Installation Dia	Working Volt	Signal	Range	Bezel
A	801-00025	CMP2-WS-0-30	Φ52mm	9-32V	0.5-4.5V	0-30Bar	316L
B	801-20009	CMP2-WW-0-30	Φ52mm	9-32V	0.5-4.5V	0-30Bar	316L
C	801-00026	CMP2-BS-0-30	Φ52mm	9-32V	0.5-4.5V	0-30Bar	316L
D	801-00027	CMP2-BN-0-30	Φ52mm	9-32V	0.5-4.5V	0-30Bar	316L

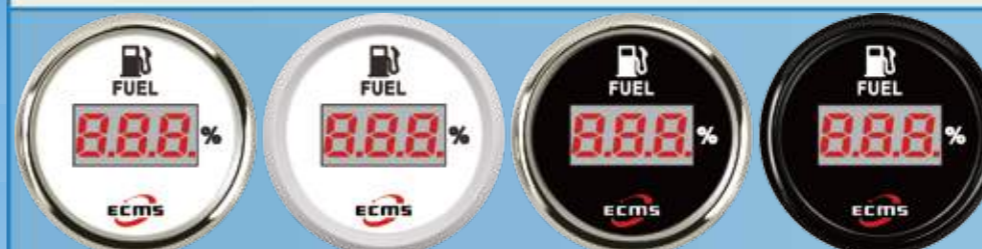
Pressure Gauge



A B C D E F

STYLE	P/N	Model	Installation Dia	Working Volt	Signal	Range	Bezel
A	801-00019	CMP2-WS-0-5	Φ52mm	9-32V	10-184Ω	0-5Bar	316L
A	801-00022	CMP2-WS-0-10	Φ52mm	9-32V	10-184Ω	0-10Bar	316L
B	801-20007	CMP2-WW-0-5	Φ52mm	9-32V	10-184Ω	0-5Bar	316L
B	801-20008	CMP2-WW-0-10	Φ52mm	9-32V	10-184Ω	0-10Bar	316L
C	801-00020	CMP2-BS-0-5	Φ52mm	9-32V	10-184Ω	0-5Bar	316L
C	801-00023	CMP2-BS-0-10	Φ52mm	9-32V	10-184Ω	0-10Bar	316L
D	801-00021	CMP2-BN-0-5	Φ52mm	9-32V	10-184Ω	0-5Bar	316L
D	801-00024	CMP2-BN-0-10	Φ52mm	9-32V	10-184Ω	0-10Bar	316L

Fuel Level Gauge



A B C D E F

STYLE	P/N	Model	Installation Dia	Working Volt	Signal	Range	Bezel
A	801-00034	CEF2-WS-0-190	Φ52mm	9-32V	0-190Ω	0-100%	316L
A	801-00037	CEF2-WS-240-33	Φ52mm	9-32V	240-33Ω	0-100%	316L
B	801-20012	CEF2-WW-0-190	Φ52mm	9-32V	0-190Ω	0-100%	316L
B	801-20013	CEF2-WW-240-33	Φ52mm	9-32V	240-33Ω	0-100%	316L
C	801-00035	CEF2-BS-0-190	Φ52mm	9-32V	0-190Ω	0-100%	316L
C	801-00038	CEF2-BS-240-33	Φ52mm	9-32V	240-33Ω	0-100%	316L
D	801-00036	CEF2-BN-0-190	Φ52mm	9-32V	0-190Ω	0-100%	316L
D	801-00039	CEF2-BN-240-33	Φ52mm	9-32V	240-33Ω	0-100%	316L

Voltmeter



A B C D E F

STYLE	P/N	Model	Installation Dia	Working Volt	Signal	Range	Bezel
A	801-00028	CMV2-WS-8-16	Φ52mm	9-32V	8-16V	8-16V	316L
A	801-00031	CMV2-WS-16-32	Φ52mm	9-32V	16-32V	16-32V	316L
B	801-20010	CMV2-WW-8-16	Φ52mm	9-32V	8-16V	8-16V	316L
B	801-20011	CMV2-WW-16-32	Φ52mm	9-32V	16-32V	16-32V	316L
C	801-00029	CMV2-BS-8-16	Φ52mm	9-32V	8-16V	8-16V	316L
C	801-00032	CMV2-BS-16-32	Φ52mm	9-32V	16-32V	16-32V	316L
D	801-00030	CMV2-BN-8-16	Φ52mm	9-32V	8-16V	8-16V	316L
D	801-00033	CMV2-BN-16-32	Φ52mm	9-32V	16-32V	16-32V	316L

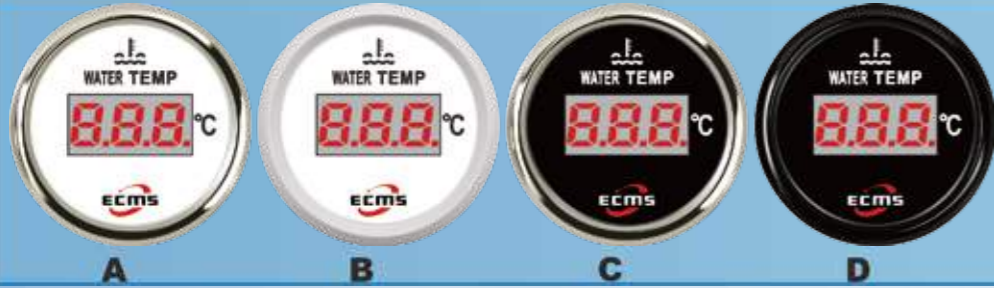
Water Level Gauge



A B C D E F

STYLE	P/N	Model	Installation Dia	Working Volt	Signal	Range	Bezel
A	801-00058	CEW2-WS-0-190	Φ52mm	9-32V	0-190Ω	0-100%	316L
A	801-00061	CEW2-WS-240-33	Φ52mm	9-32V	240-33Ω	0-100%	316L
B	801-20020	CEW2-WW-0-190	Φ52mm	9-32V	0-190Ω	0-100%	316L
B	801-20021	CEW2-WW-240-33	Φ52mm	9-32V	240-33Ω	0-100%	316L
C	801-00059	CEW2-BS-0-190	Φ52mm	9-32V	0-190Ω	0-100%	316L
C	801-00062	CEW2-BS-240-33	Φ52mm	9-32V	240-33Ω	0-100%	316L
D	801-00060	CEW2-BN-0-190	Φ52mm	9-32V	0-190Ω	0-100%	316L
D	801-00063	CEW2-BN-240-33	Φ52mm	9-32V	240-33Ω	0-100%	316L

Water Temperature Gauge



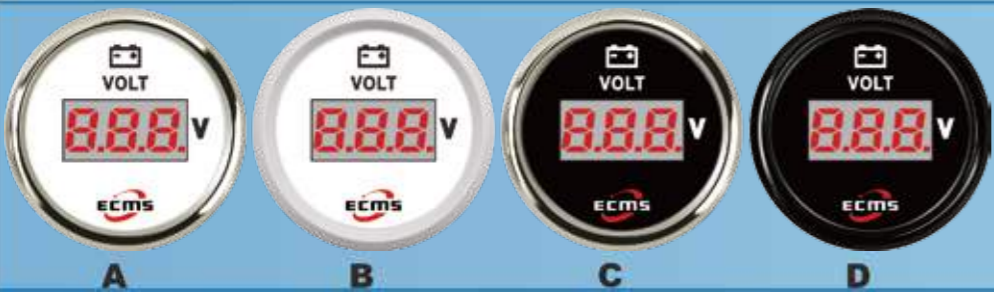
STYLE	P/N	Model	Installation Dia	Working Volt	Signal	Range	Bezel
A	801-00040	CET2-WS-40-120	Φ52mm	9-32V	287.4-22.4Ω	40-120°C	316L
B	801-20014	CET2-WW-40-120	Φ52mm	9-32V	287.4-22.4Ω	40-120°C	316L
C	801-00041	CET2-BS-40-120	Φ52mm	9-32V	287.4-22.4Ω	40-120°C	316L
D	801-00042	CET2-BN-40-120	Φ52mm	9-32V	287.4-22.4Ω	40-120°C	316L

Oil Temperature Gauge



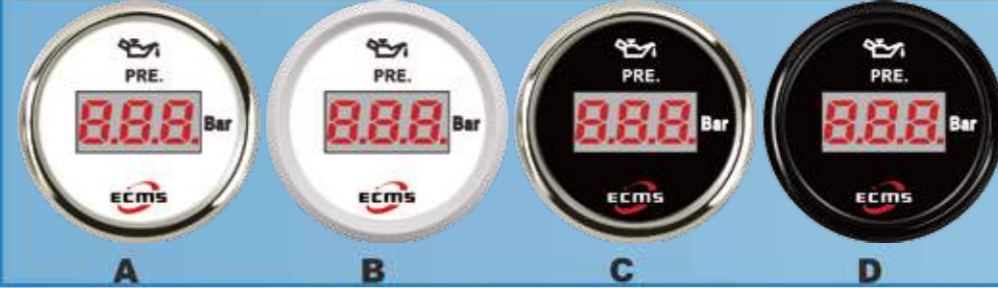
STYLE	P/N	Model	Installation Dia	Working Volt	Signal	Range	Bezel
A	801-00043	CET2-WS-50-150	Φ52mm	9-32V	361-19Ω	50-150°C	316L
B	801-20015	CET2-WW-50-150	Φ52mm	9-32V	361-19Ω	50-150°C	316L
C	801-00044	CET2-BS-50-150	Φ52mm	9-32V	361-19Ω	50-150°C	316L
D	801-00045	CET2-BN-50-150	Φ52mm	9-32V	361-19Ω	50-150°C	316L

Voltmeter



STYLE	P/N	Model	Installation Dia	Working Volt	Signal	Range	Bezel
A	801-00052	CEV2-WS-8-32	Φ52mm	9-32V	8-32V	8-32V	316L
B	801-20018	CEV2-WW-8-32	Φ52mm	9-32V	8-32V	8-32V	316L
C	801-00053	CEV2-BS-8-32	Φ52mm	9-32V	8-32V	8-32V	316L
D	801-00054	CEV2-BN-8-32	Φ52mm	9-32V	8-32V	8-32V	316L

Pressure Gauge



STYLE	P/N	Model	Installation Dia	Working Volt	Signal	Range	Bezel
A	801-00046	CEP2-WS-0-5	Φ52mm	9-32V	10-184Ω	0-5Bar	316L
A	801-00049	CEP2-WS-0-10	Φ52mm	9-32V	10-184Ω	0-10Bar	316L
B	801-20016	CEP2-WW-0-5	Φ52mm	9-32V	10-184Ω	0-5Bar	316L
B	801-20017	CEP2-WW-0-10	Φ52mm	9-32V	10-184Ω	0-10Bar	316L
C	801-00047	CEP2-BS-0-5	Φ52mm	9-32V	10-184Ω	0-5Bar	316L
C	801-00050	CEP2-BS-0-10	Φ52mm	9-32V	10-184Ω	0-10Bar	316L
D	801-00048	CEP2-BN-0-5	Φ52mm	9-32V	10-184Ω	0-5Bar	316L
D	801-00051	CEP2-BN-0-10	Φ52mm	9-32V	10-184Ω	0-10Bar	316L

Hourmeter



STYLE	P/N	Model	Installation Dia	Working Volt	Signal	Range	Bezel
A	801-00055	CLH2-WS-HS	Φ52mm	9-32V	NULL	0-99999.9	316L
B	801-20019	CLH2-WW-HS	Φ52mm	9-32V	NULL	0-99999.9	316L
C	801-00056	CLH2-BS-HS	Φ52mm	9-32V	NULL	0-99999.9	316L
D	801-00057	CLH2-BN-HS	Φ52mm	9-32V	NULL	0-99999.9	316L
E							
F	811-10038	CPH2-BN-HS	Φ52mm	9-80V	NULL	0-99999.9	Fe

Tachometer



A B C D E F

STYLE	P/N	Model	Installation Dia	Working Volt	Signal	Range	Bezel
A	901-00001	CMH3-WS-3KL	Φ85mm	9-32V	Pulse	3KRPM	316L
A	901-00004	CMH3-WS-4KL	Φ85mm	9-32V	Pulse	4KRPM	316L
A	901-00007	CMH3-WS-6KL	Φ85mm	9-32V	Pulse	6KRPM	316L
A	901-00010	CMH3-WS-8KL	Φ85mm	9-32V	Pulse	8KRPM	316L
B	901-20001	CMH3-WW-3KL	Φ85mm	9-32V	Pulse	3KRPM	316L
B	901-20002	CMH3-WW-4KL	Φ85mm	9-32V	Pulse	4KRPM	316L
B	901-20003	CMH3-WW-6KL	Φ85mm	9-32V	Pulse	6KRPM	316L
B	901-20004	CMH3-WW-8KL	Φ85mm	9-32V	Pulse	8KRPM	316L
C	901-00002	CMH3-BS-3KL	Φ85mm	9-32V	Pulse	3KRPM	316L
C	901-00005	CMH3-BS-4KL	Φ85mm	9-32V	Pulse	4KRPM	316L
C	901-00008	CMH3-BS-6KL	Φ85mm	9-32V	Pulse	6KRPM	316L
C	901-00011	CMH3-BS-8KL	Φ85mm	9-32V	Pulse	8KRPM	316L
D	901-00003	CMH3-BN-3KL	Φ85mm	9-32V	Pulse	3KRPM	316L
D	901-00006	CMH3-BN-4KL	Φ85mm	9-32V	Pulse	4KRPM	316L
D	901-00009	CMH3-BN-6KL	Φ85mm	9-32V	Pulse	6KRPM	316L
D	901-00012	CMH3-BN-8KL	Φ85mm	9-32V	Pulse	8KRPM	316L

Speedometer



A B C D E F

STYLE	P/N	Model	Installation Dia	Working Volt	Signal	Range	Bezel
A	901-00016	CMS3-WS-120KL	Φ85mm	9-32V	Pulse	120km/h	316L
A	901-00019	CMS3-WS-200KL	Φ85mm	9-32V	Pulse	200km/h	316L
B	901-20006	CMS3-WW-120KL	Φ85mm	9-32V	Pulse	120km/h	316L
B	901-20007	CMS3-WW-200KL	Φ85mm	9-32V	Pulse	200km/h	316L
C	901-00017	CMS3-BS-120KL	Φ85mm	9-32V	Pulse	120km/h	316L
C	901-00020	CMS3-BS-200KL	Φ85mm	9-32V	Pulse	200km/h	316L
D	901-00018	CMS3-BN-120KL	Φ85mm	9-32V	Pulse	120km/h	316L
D	901-00021	CMS3-BN-200KL	Φ85mm	9-32V	Pulse	200km/h	316L

Fuel Level Gauge



A B C D E F

STYLE	P/N	Model	Installation Dia	Working Volt	Signal	Range	Bezel
A	802-00001	HMF2-WS-R	Φ52mm	9-32V	RΩ	E-F	316L
B	802-20001	HMF2-WW-R	Φ52mm	9-32V	RΩ	E-F	316L
C	802-00002	HMF2-WG-R	Φ52mm	9-32V	RΩ	E-F	316L
D	802-00003	HMF2-BG-R	Φ52mm	9-32V	RΩ	E-F	316L
E	802-00004	HMF2-BS-R	Φ52mm	9-32V	RΩ	E-F	316L
F	802-00005	HMF2-BN-R	Φ52mm	9-32V	RΩ	E-F	316L

Water Level Gauge



A B C D E F

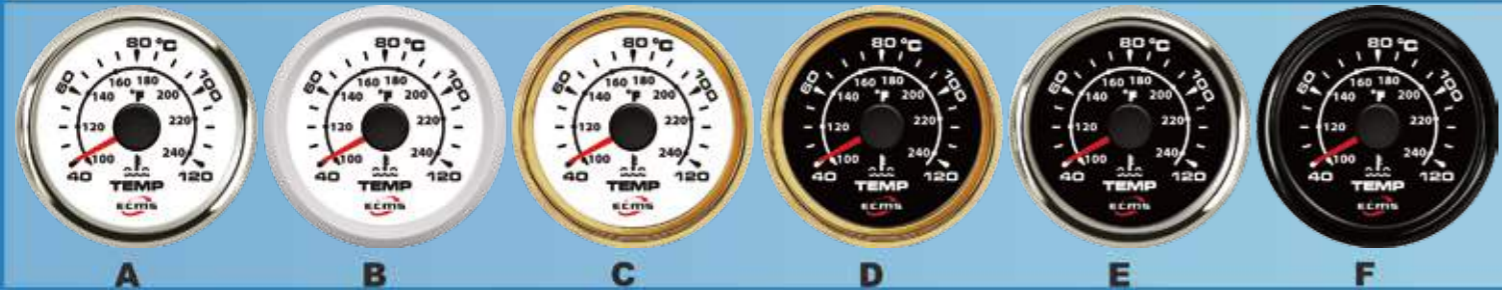
STYLE	P/N	Model	Installation Dia	Working Volt	Signal	Range	Bezel
A	802-00006	HMW2-WS-R	Φ52mm	9-32V	RΩ	E-F	316L
B	802-20002	HMW2-WW-R	Φ52mm	9-32V	RΩ	E-F	316L
C	802-00007	HMW2-WG-R	Φ52mm	9-32V	RΩ	E-F	316L
D	802-00008	HMW2-BG-R	Φ52mm	9-32V	RΩ	E-F	316L
E	802-00009	HMW2-BS-R	Φ52mm	9-32V	RΩ	E-F	316L
F	802-00010	HMW2-BN-R	Φ52mm	9-32V	RΩ	E-F	316L

Sewage Level Gauge



STYLE	P/N	Model	Installation Dia	Working Volt	Signal	Range	Bezel
A	802-00011	HMS2-WS-R	Φ52mm	9-32V	RΩ	E-F	316L
B	802-20003	HMS2-WS-R	Φ52mm	9-32V	RΩ	E-F	316L
C	802-00012	HMS2-WG-R	Φ52mm	9-32V	RΩ	E-F	316L
D	802-00013	HMS2-BG-R	Φ52mm	9-32V	RΩ	E-F	316L
E	802-00014	HMS2-BS-R	Φ52mm	9-32V	RΩ	E-F	316L
F	802-00015	HMS2-BN-R	Φ52mm	9-32V	RΩ	E-F	316L

Water Temperature Gauge



STYLE	P/N	Model	Installation Dia	Working Volt	Signal	Range	Bezel
A	802-00016	HMT2-WS-40-120	Φ52mm	9-32V	287.4-22.4Ω	40-120°C	316L
B	802-20004	HMT2-WW-40-120	Φ52mm	9-32V	287.4-22.4Ω	40-120°C	316L
C	802-00017	HMT2-WG-40-120	Φ52mm	9-32V	287.4-22.4Ω	40-120°C	316L
D	802-00018	HMT2-BG-40-120	Φ52mm	9-32V	287.4-22.4Ω	40-120°C	316L
E	802-00019	HMT2-BS-40-120	Φ52mm	9-32V	287.4-22.4Ω	40-120°C	316L
F	802-00020	HMT2-BN-40-120	Φ52mm	9-32V	287.4-22.4Ω	40-120°C	316L

Oil Temperature Gauge



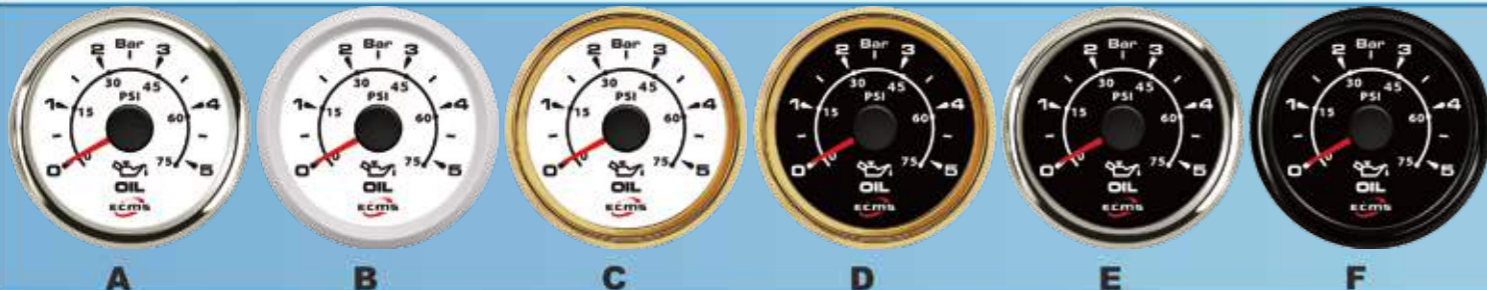
STYLE	P/N	Model	Installation Dia	Working Volt	Signal	Range	Bezel
A	802-00021	HMT2-WS-50-150	Φ52mm	9-32V	361-19Ω	50-150°C	316L
B	802-20005	HMT2-WW-50-150	Φ52mm	9-32V	361-19Ω	50-150°C	316L
C	802-00022	HMT2-WG-50-150	Φ52mm	9-32V	361-19Ω	50-150°C	316L
D	802-00023	HMT2-BG-50-150	Φ52mm	9-32V	361-19Ω	50-150°C	316L
E	802-00024	HMT2-BS-50-150	Φ52mm	9-32V	361-19Ω	50-150°C	316L
F	802-00025	HMT2-BN-50-150	Φ52mm	9-32V	361-19Ω	50-150°C	316L

Voltmeter



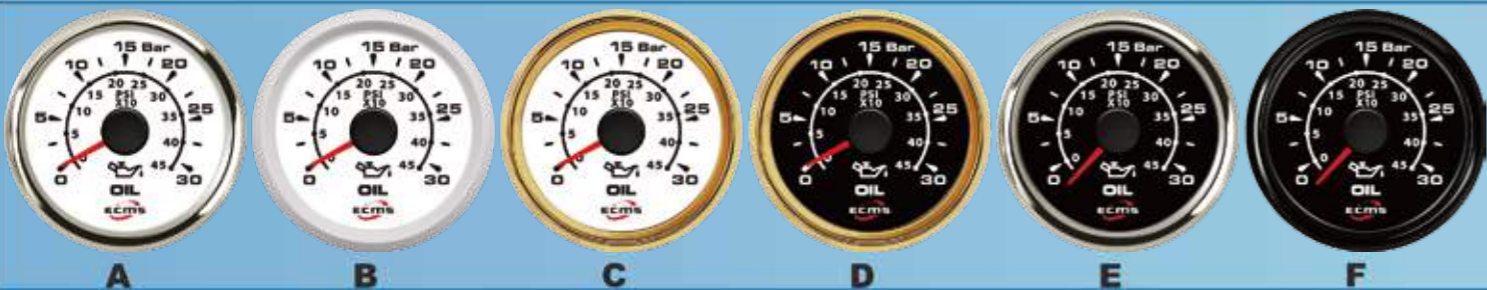
STYLE	P/N	Model	Installation Dia	Working Volt	Signal	Range	Bezel
A	802-00041	HMV2-WS-8-16	Φ52mm	9-32V	8-16V	8-16V	316L
A	802-00046	HMV2-WS-16-32	Φ52mm	9-32V	18-32V	18-32V	316L
B	802-20009	HMV2-WW-8-16	Φ52mm	9-32V	8-16V	8-16V	316L
B	802-20010	HMV2-WW-16-32	Φ52mm	9-32V	18-32V	18-32V	316L
C	802-00042	HMV2-WG-8-16	Φ52mm	9-32V	8-16V	8-16V	316L
C	802-00047	HMV2-WG-16-32	Φ52mm	9-32V	18-32V	18-32V	316L
D	802-00043	HMV2-BG-8-16	Φ52mm	9-32V	8-16V	8-16V	316L
D	802-00048	HMV2-BG-16-32	Φ52mm	9-32V	18-32V	18-32V	316L
E	802-00044	HMV2-BS-8-16	Φ52mm	9-32V	8-16V	8-16V	316L
E	802-00049	HMV2-BS-16-32	Φ52mm	9-32V	18-32V	18-32V	316L
F	802-00045	HMV2-BN-8-16	Φ52mm	9-32V	8-16V	8-16V	316L
F	802-00050	HMV2-BN-16-32	Φ52mm	9-32V	18-32V	18-32V	316L

Pressure Gauge



STYLE	P/N	Model	Installation Dia	Working Volt	Signal	Range	Bezel
A	802-00026	HMP2-WS-0-5	Φ52mm	9-32V	10-184Ω	0-5Bar	316L
A	802-00031	HMP2-WS-0-10	Φ52mm	9-32V	10-184Ω	0-10Bar	316L
B	802-20006	HMP2-WW-0-5	Φ52mm	9-32V	10-184Ω	0-5Bar	316L
B	802-20007	HMP2-WW-0-10	Φ52mm	9-32V	10-184Ω	0-10Bar	316L
C	802-00027	HMP2-WG-0-5	Φ52mm	9-32V	10-184Ω	0-5Bar	316L
C	802-00032	HMP2-WG-0-10	Φ52mm	9-32V	10-184Ω	0-10Bar	316L
D	802-00028	HMP2-BG-0-5	Φ52mm	9-32V	10-184Ω	0-5Bar	316L
D	802-00033	HMP2-BG-0-10	Φ52mm	9-32V	10-184Ω	0-10Bar	316L
E	802-00029	HMP2-BS-0-5	Φ52mm	9-32V	10-184Ω	0-5Bar	316L
E	802-00034	HMP2-BS-0-10	Φ52mm	9-32V	10-184Ω	0-10Bar	316L
F	802-00030	HMP2-BN-0-5	Φ52mm	9-32V	10-184Ω	0-5Bar	316L
F	802-00035	HMP2-BN-0-10	Φ52mm	9-32V	10-184Ω	0-10Bar	316L

Pressure Gauge



STYLE	P/N	Model	Installation Dia	Working Volt	Signal	Range	Bezel
A	802-00036	HMP2-WS-0-30	Φ52mm	9-32V	0.5-4.5V	0-30Bar	316L
B	802-20008	HMP2-WW-0-30	Φ52mm	9-32V	0.5-4.5V	0-30Bar	316L
C	802-00037	HMP2-WG-0-30	Φ52mm	9-32V	0.5-4.5V	0-30Bar	316L
D	802-00038	HMP2-BG-0-30	Φ52mm	9-32V	0.5-4.5V	0-30Bar	316L
E	802-00039	HMP2-BS-0-30	Φ52mm	9-32V	0.5-4.5V	0-30Bar	316L
F	802-00040	HMP2-BN-0-30	Φ52mm	9-32V	0.5-4.5V	0-30Bar	316L

Trim Gauge

900-00061-65

900-00056-60



STYLE	P/N	Model	Installation Dia	Working Volt	Signal	Range	Bezel
A	802-00061	HMM2-WS-RL	Φ52mm	9-32V	0-190Ω	UP-DN	316L
A	802-00056	HMM2-WS-RR	Φ52mm	9-32V	0-190Ω	UP-DN	316L
B	802-20013	HMM2-WW-RL	Φ52mm	9-32V	0-190Ω	UP-DN	316L
B	802-20012	HMM2-WW-RR	Φ52mm	9-32V	0-190Ω	UP-DN	316L
C	802-00062	HMM2-WG-RL	Φ52mm	9-32V	0-190Ω	UP-DN	316L
C	802-00057	HMM2-WG-RR	Φ52mm	9-32V	0-190Ω	UP-DN	316L
D	802-00063	HMM2-BG-RL	Φ52mm	9-32V	0-190Ω	UP-DN	316L
D	802-00058	HMM2-BG-RR	Φ52mm	9-32V	0-190Ω	UP-DN	316L
E	802-00059	HMM2-BS-RR	Φ52mm	9-32V	0-190Ω	UP-DN	316L
E	802-00064	HMM2-BS-RL	Φ52mm	9-32V	0-190Ω	UP-DN	316L
F	802-00060	HMM2-BN-RR	Φ52mm	9-32V	0-190Ω	UP-DN	316L
F	802-00065	HMM2-BN-RL	Φ52mm	9-32V	0-190Ω	UP-DN	316L

Water Temperature Gauge



STYLE	P/N	Model	Installation Dia	Working Volt	Signal	Range	Bezel
A	802-00201	PMT2-WS-40-120	Φ52mm	9-32V	287.4-22.4Ω	40-120°C	316L
B	802-20041	PMT2-WW-40-120	Φ52mm	9-32V	287.4-22.4Ω	40-120°C	316L
C	802-00202	PMT2-WG-40-120	Φ52mm	9-32V	287.4-22.4Ω	40-120°C	316L
D	802-00203	PMT2-BG-40-120	Φ52mm	9-32V	287.4-22.4Ω	40-120°C	316L
E	802-00204	PMT2-BS-40-120	Φ52mm	9-32V	287.4-22.4Ω	40-120°C	316L
F	802-00205	PMT2-BN-40-120	Φ52mm	9-32V	287.4-22.4Ω	40-120°C	316L



Fuel Level Gauge



STYLE	P/N	Model	Installation Dia	Working Volt	Signal	Range	Bezel
A	802-00186	PMF2-WS-R	Φ52mm	9-32V	RΩ	E-F	316L
A	802-00236	PMF2-WS-0-190	Φ52mm	9-32V	0-190Ω	E-F	316L
A	802-00241	PMF2-WS-240-33	Φ52mm	9-32V	240-33Ω	E-F	316L
B	802-20038	PMF2-VW-R	Φ52mm	9-32V	RΩ	E-F	316L
B	802-20048	PMF2-VW-0-190	Φ52mm	9-32V	0-190Ω	E-F	316L
B	802-20049	PMF2-VW-240-33	Φ52mm	9-32V	240-33Ω	E-F	316L
C	802-00187	PMF2-WG-R	Φ52mm	9-32V	RΩ	E-F	316L
C	802-00237	PMF2-WG-0-190	Φ52mm	9-32V	0-190Ω	E-F	316L
C	802-00242	PMF2-WG-240-33	Φ52mm	9-32V	240-33Ω	E-F	316L
D	802-00188	PMF2-BG-R	Φ52mm	9-32V	RΩ	E-F	316L
D	802-00238	PMF2-BG-0-190	Φ52mm	9-32V	0-190Ω	E-F	316L
D	802-00243	PMF2-BG-240-33	Φ52mm	9-32V	240-33Ω	E-F	316L
E	802-00189	PMF2-BS-R	Φ52mm	9-32V	RΩ	E-F	316L
E	802-00239	PMF2-BS-0-190	Φ52mm	9-32V	0-190Ω	E-F	316L
E	802-00244	PMF2-BS-240-33	Φ52mm	9-32V	240-33Ω	E-F	316L
F	802-00190	PMF2-BN-R	Φ52mm	9-32V	RΩ	E-F	316L
F	802-00240	PMF2-BN-0-190	Φ52mm	9-32V	0-190Ω	E-F	316L
F	802-00245	PMF2-BN-240-33	Φ52mm	9-32V	240-33Ω	E-F	316L

Water Level Gauge



STYLE	P/N	Model	Installation Dia	Working Volt	Signal	Range	Bezel
A	802-00191	PMW2-WS-R	Φ52mm	9-32V	RΩ	E-F	316L
A	802-00246	PMW2-WS-0-190	Φ52mm	9-32V	0-190Ω	E-F	316L
A	802-00251	PMW2-WS-240-33	Φ52mm	9-32V	240-33Ω	E-F	316L
B	802-20039	PMW2-VW-R	Φ52mm	9-32V	RΩ	E-F	316L
B	802-20050	PMW2-VW-0-190	Φ52mm	9-32V	0-190Ω	E-F	316L
B	802-20051	PMW2-VW-240-33	Φ52mm	9-32V	240-33Ω	E-F	316L

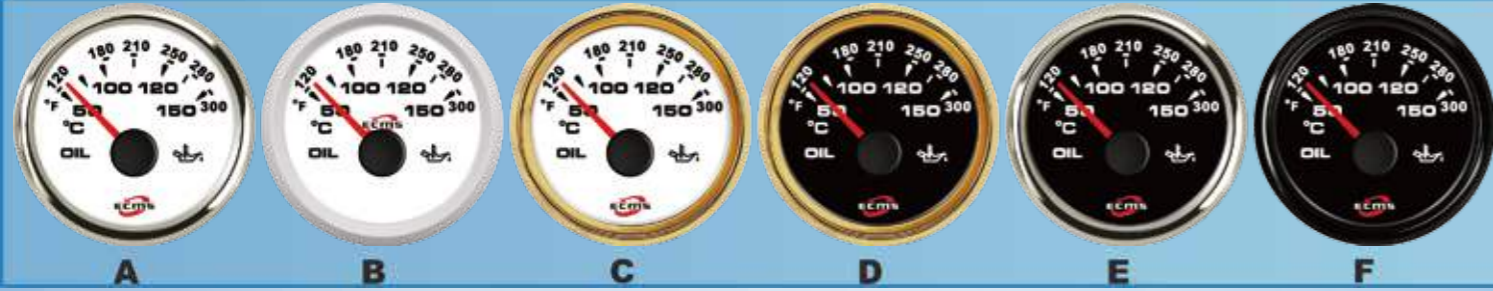
Sewage Level Gauge



STYLE	P/N	Model	Installation Dia	Working Volt	Signal	Range	Bezel
A	802-00196	PMS2-WS-R	Φ52mm	9-32V	RΩ	E-F	316L
A	802-00256	PMS2-WS-0-190	Φ52mm	9-32V	0-190Ω	E-F	316L
A	802-00261	PMS2-WS-240-33	Φ52mm	9-32V	240-33Ω	E-F	316L
B	802-20040	PMS2-VW-R	Φ52mm	9-32V	RΩ	E-F	316L
B	802-20052	PMS2-VW-0-190	Φ52mm	9-32V	0-190Ω	E-F	316L
B	802-20053	PMS2-VW-240-33	Φ52mm	9-32V	240-33Ω	E-F	316L
C	802-00197	PMS2-WG-R	Φ52mm	9-32V	RΩ	E-F	316L
C	802-00257	PMS2-WG-0-190	Φ52mm	9-32V	0-190Ω	E-F	316L
C	802-00262	PMS2-WG-240-33	Φ52mm	9-32V	240-33Ω	E-F	316L
D	802-00198	PMS2-BG-R	Φ52mm	9-32V	RΩ	E-F	316L
D	802-00258	PMS2-BG-0-190	Φ52mm	9-32V	0-190Ω	E-F	316L
D	802-00263	PMS2-BG-240-33	Φ52mm	9-32V	240-33Ω	E-F	316L
E	802-00199	PMS2-BS-R	Φ52mm	9-32V	RΩ	E-F	316L
E	802-00259	PMS2-BS-0-190	Φ52mm	9-32V	0-190Ω	E-F	316L
E	802-00264	PMS2-BS-240-33	Φ52mm	9-32V	240-33Ω	E-F	316L
F	802-00200	PMS2-BN-R	Φ52mm	9-32V	RΩ	E-F	316L
F	802-00260	PMS2-BN-0-190	Φ52mm	9-32V	0-190Ω	E-F	316L
F	802-00265	PMS2-BN-240-33	Φ52mm	9-32V	240-33Ω	E-F	316L

C	802-00192	PMW2-WG-R	Φ52mm	9-32V	RΩ	E-F	316L
C	802-00247	PMW2-WG-0-190	Φ52mm	9-32V	0-190Ω	E-F	316L
C	802-00252	PMW2-WG-240-33	Φ52mm	9-32V	240-33Ω	E-F	316L
D	802-00193	PMW2-BG-R	Φ52mm	9-32V	RΩ	E-F	316L
D	802-00248	PMW2-BG-0-190	Φ52mm	9-32V	0-190Ω	E-F	316L
D	802-00253	PMW2-BG-240-33	Φ52mm	9-32V	240-33Ω	E-F	316L
E	802-00194	PMW2-BS-R	Φ52mm	9-32V	RΩ	E-F	316L
E	802-00249	PMW2-BS-0-190	Φ52mm	9-32V	0-190Ω	E-F	316L
E	802-00254	PMW2-BS-240-33	Φ52mm	9-32V	240-33Ω	E-F	316L
F	802-00195	PMW2-BN-R	Φ52mm	9-32V	RΩ	E-F	316L
F	802-00250	PMW2-BN-0-190	Φ52mm	9-32V	0-190Ω	E-F	316L
F	802-00255	PMW2-BN-240-33	Φ52mm	9-32V	240-33Ω	E-F	316L

Oil Temperature Gauge



STYLE	P/N	Model	Installation Dia	Working Volt	Signal	Range	Bezel
A	802-00206	PMT2-WS-50-150	Φ52mm	9-32V	361-19Ω	50-150℃	316L
B	802-20042	PMT2-WW-50-150	Φ52mm	9-32V	361-19Ω	50-150℃	316L
C	802-00207	PMT2-WG-50-150	Φ52mm	9-32V	361-19Ω	50-150℃	316L
D	802-00208	PMT2-BG-50-150	Φ52mm	9-32V	361-19Ω	50-150℃	316L
E	802-00209	PMT2-BS-50-150	Φ52mm	9-32V	361-19Ω	50-150℃	316L
F	802-00210	PMT2-BN-50-150	Φ52mm	9-32V	361-19Ω	50-150℃	316L

Voltmeter



STYLE	P/N	Model	Installation Dia	Working Volt	Signal	Range	Bezel
A	802-00226	PMV2-WS-8-16	Φ52mm	9-32V	8-16V	8-16V	316L
A	802-00231	PMV2-WS-16-32	Φ52mm	9-32V	16-32V	16-32V	316L
B	802-20046	PMV2-WW-8-16	Φ52mm	9-32V	8-16V	8-16V	316L
B	802-20047	PMV2-WW-16-32	Φ52mm	9-32V	16-32V	16-32V	316L
C	802-00227	PMV2-WG-8-16	Φ52mm	9-32V	8-16V	8-16V	316L
C	802-00232	PMV2-WG-16-32	Φ52mm	9-32V	16-32V	16-32V	316L
D	802-00228	PMV2-BG-8-16	Φ52mm	9-32V	8-16V	8-16V	316L
D	802-00233	PMV2-BG--16-32	Φ52mm	9-32V	16-32V	16-32V	316L
E	802-00229	PMV2-BS-8-16	Φ52mm	9-32V	8-16V	8-16V	316L
E	802-00234	PMV2-BS-16-32	Φ52mm	9-32V	16-32V	16-32V	316L
F	802-00230	PMV2-BN-8-16	Φ52mm	9-32V	8-16V	8-16V	316L
F	802-00235	PMV2-BN-16-32	Φ52mm	9-32V	16-32V	16-32V	316L

Pressure Gauge



STYLE	P/N	Model	Installation Dia	Working Volt	Signal	Range	Bezel
A	802-00211	PMP2-WS-0-5	Φ52mm	9-32V	10-184Ω	0-5Bar	316L
A	802-00216	PMP2-WS-0-10	Φ52mm	9-32V	10-184Ω	0-10Bar	316L
B	802-20043	PMP2-WW-0-5	Φ52mm	9-32V	10-184Ω	0-5Bar	316L
B	802-20044	PMP2-WW-0-10	Φ52mm	9-32V	10-184Ω	0-10Bar	316L
C	802-00212	PMP2-WG-0-5	Φ52mm	9-32V	10-184Ω	0-5Bar	316L
C	802-00217	PMP2-WG-0-10	Φ52mm	9-32V	10-184Ω	0-10Bar	316L
D	802-00213	PMP2-BG-0-5	Φ52mm	9-32V	10-184Ω	0-5Bar	316L
D	802-00218	PMP2-BG-0-10	Φ52mm	9-32V	10-184Ω	0-10Bar	316L
E	802-00214	PMP2-BS-0-5	Φ52mm	9-32V	10-184Ω	0-5Bar	316L
E	802-00219	PMP2-BS-0-10	Φ52mm	9-32V	10-184Ω	0-10Bar	316L
F	802-00215	PMP2-BN-0-5	Φ52mm	9-32V	10-184Ω	0-5Bar	316L
F	802-00220	PMP2-BN-0-10	Φ52mm	9-32V	10-184Ω	0-10Bar	316L

Pressure Gauge



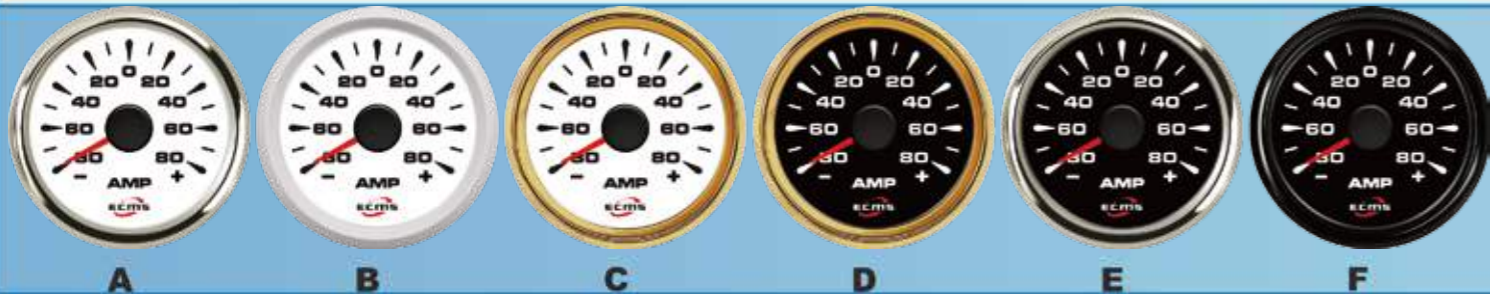
STYLE	P/N	Model	Installation Dia	Working Volt	Signal	Range	Bezel
A	802-00221	PMP2-WS-0-30	Φ52mm	9-32V	0.5-4.5V	0-30Bar	316L
B	802-20045	PMP2-WW-0-30	Φ52mm	9-32V	0.5-4.5V	0-30Bar	316L
C	802-00222	PMP2-WG-0-30	Φ52mm	9-32V	0.5-4.5V	0-30Bar	316L
D	802-00223	PMP2-BG-0-30	Φ52mm	9-32V	0.5-4.5V	0-30Bar	316L
E	802-00224	PMP2-BS-0-30	Φ52mm	9-32V	0.5-4.5V	0-30Bar	316L
F	802-00225	PMP2-BN-0-30	Φ52mm	9-32V	0.5-4.5V	0-30Bar	316L

Rudder Angle Indicator



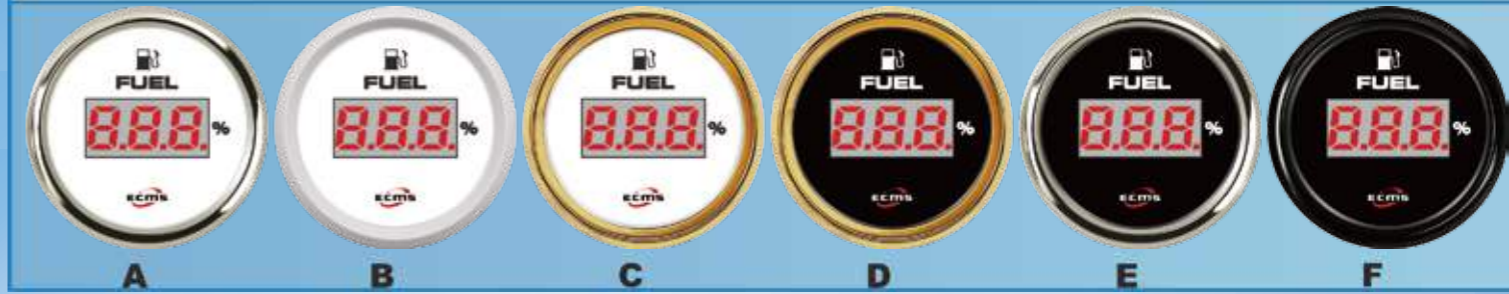
STYLE	P/N	Model	Installation Dia	Working Volt	Signal	Range	Bezel
A	802-00051	HMR2-WS-0-190	Φ 52mm	9-32V	0-190Ω	STBD-PORT	316L
B	802-20011	HMR2-WW-0-190	Φ 52mm	9-32V	0-190Ω	STBD-PORT	316L
C	802-00052	HMR2-WG-0-190	Φ 52mm	9-32V	0-190Ω	STBD-PORT	316L
D	802-00053	HMR2-BG-0-190	Φ 52mm	9-32V	0-190Ω	STBD-PORT	316L
E	802-00054	HMR2-BS-0-190	Φ 52mm	9-32V	0-190Ω	STBD-PORT	316L
F	802-00055	HMR2-BN-0-190	Φ 52mm	9-32V	0-190Ω	STBD-PORT	316L

Amperemeter



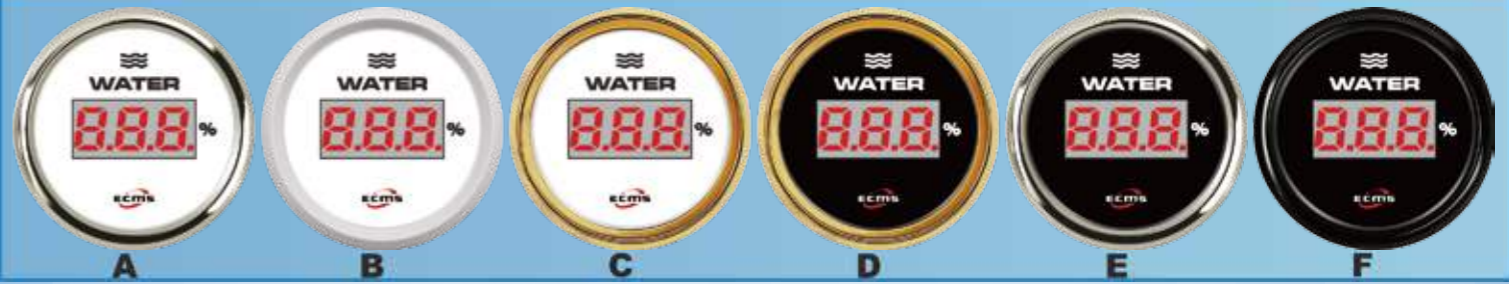
STYLE	P/N	Model	Installation Dia	Working Volt	Signal	Range	Bezel
A	802-00071	HMA2-WS±80A	Φ 52mm	9-32V	0.5-4.5V	± 80A	316L
A	802-00081	HMA2-WS±150A	Φ 52mm	9-32V	0.5-4.5V	± 150A	316L
B	802-20015	HMA2-WW±80A	Φ 52mm	9-32V	0.5-4.5V	± 80A	316L
B	802-20017	HMA2-WW±150A	Φ 52mm	9-32V	0.5-4.5V	± 150A	316L
C	802-00072	HMA2-WG±80A	Φ 52mm	9-32V	0.5-4.5V	± 80A	316L
C	802-00082	HMA2-WG±150A	Φ 52mm	9-32V	0.5-4.5V	± 150A	316L
D	802-00073	HMA2-BG±80A	Φ 52mm	9-32V	0.5-4.5V	± 80A	316L
D	802-00083	HMA2-BG±150A	Φ 52mm	9-32V	0.5-4.5V	± 150A	316L
E	802-00074	HMA2-BS±80A	Φ 52mm	9-32V	0.5-4.5V	± 80A	316L
E	802-00084	HMA2-BS±150A	Φ 52mm	9-32V	0.5-4.5V	± 150A	316L
F	802-00075	HMA2-BN±80A	Φ 52mm	9-32V	0.5-4.5V	± 80A	316L
F	802-00085	HMA2-BN±150A	Φ 52mm	9-32V	0.5-4.5V	± 150A	316L

Fuel Level Gauge



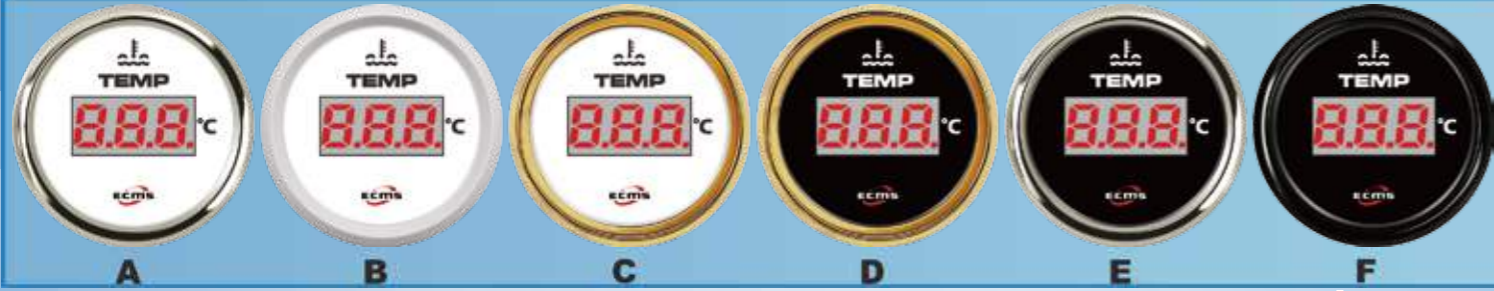
STYLE	P/N	Model	Installation Dia	Working Volt	Signal	Range	Bezel
A	802-00086	HEF2-WS-R	Φ 52mm	9-32V	RΩ	0-100%	316L
B	802-20018	HEF2-WW-R	Φ 52mm	9-32V	RΩ	0-100%	316L
C	802-00087	HEF2-WG-R	Φ 52mm	9-32V	RΩ	0-100%	316L
D	802-00088	HEF2-BG-R	Φ 52mm	9-32V	RΩ	0-100%	316L
E	802-00089	HEF2-BS-R	Φ 52mm	9-32V	RΩ	0-100%	316L
F	802-00090	HEF2-BN-R	Φ 52mm	9-32V	RΩ	0-100%	316L

Water Level Gauge



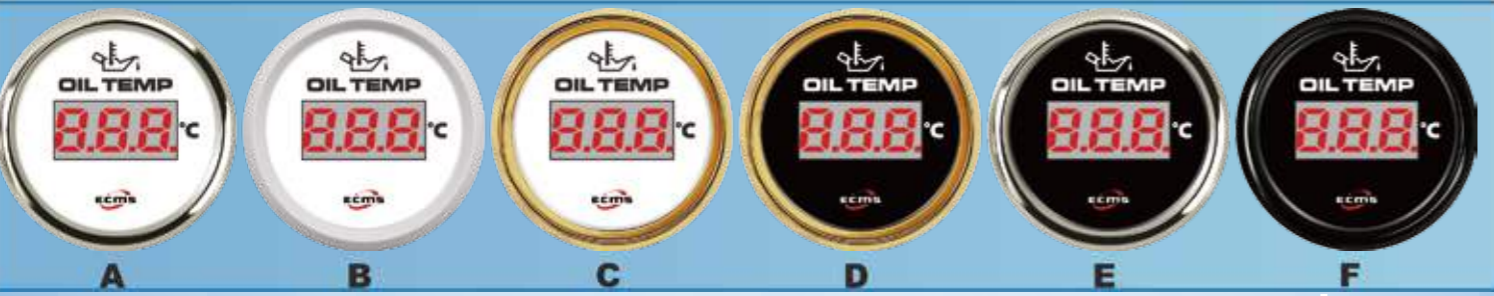
STYLE	P/N	Model	Installation Dia	Working Volt	Signal	Range	Bezel
A	802-00136	HEW2-WS-R	Φ 52mm	9-32V	RΩ	0-100%	316L
B	802-20028	HEW2-WW-R	Φ 52mm	9-32V	RΩ	0-100%	316L
C	802-00137	HEW2-WG-R	Φ 52mm	9-32V	RΩ	0-100%	316L
D	802-00138	HEW2-BG-R	Φ 52mm	9-32V	RΩ	0-100%	316L
E	802-00139	HEW2-BS-R	Φ 52mm	9-32V	RΩ	0-100%	316L
F	802-00140	HEW2-BN-R	Φ 52mm	9-32V	RΩ	0-100%	316L

Water Temperature Gauge



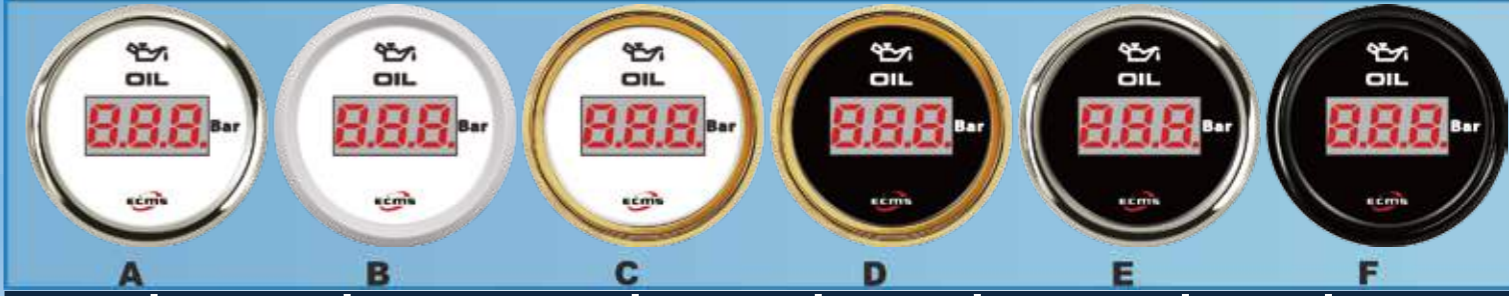
STYLE	P/N	Model	Installation Dia	Working Volt	Signal	Range	Bezel
A	802-00091	HET2-WS-40-120	Φ 52mm	9-32V	287.4-22.4 Ω	40-120°C	316L
B	802-20019	HET2-WW-40-120	Φ 52mm	9-32V	287.4-22.4 Ω	40-120°C	316L
C	802-00092	HET2-WG-40-120	Φ 52mm	9-32V	287.4-22.4 Ω	40-120°C	316L
D	802-00093	HET2-BG-40-120	Φ 52mm	9-32V	287.4-22.4 Ω	40-120°C	316L
E	802-00094	HET2-BS-40-120	Φ 52mm	9-32V	287.4-22.4 Ω	40-120°C	316L
F	802-00095	HET2-BN-40-120	Φ 52mm	9-32V	287.4-22.4 Ω	40-120°C	316L

Oil Temperature Gauge



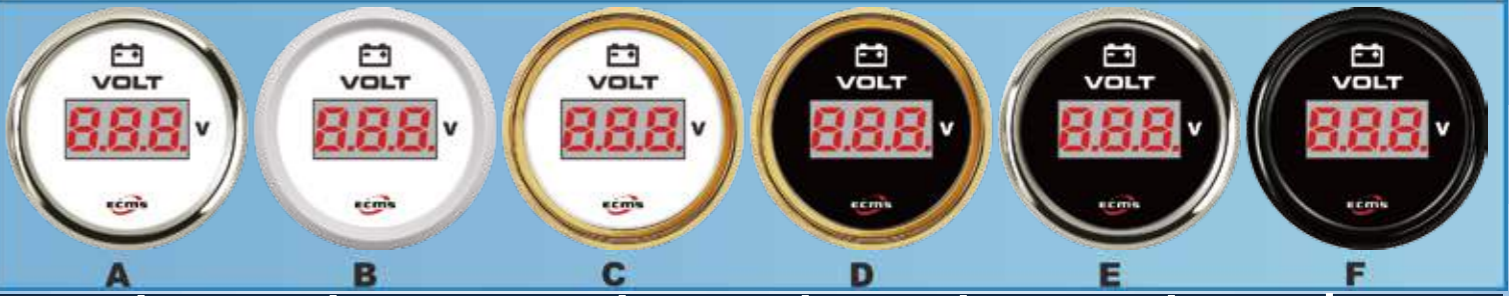
STYLE	P/N	Model	Installation Dia	Working Volt	Signal	Range	Bezel
A	802-00096	HET2-WS-50-150	Φ 52mm	9-32V	361-19 Ω	50-150°C	316L
B	802-20020	HET2-WW-50-150	Φ 52mm	9-32V	361-19 Ω	50-150°C	316L
C	802-00097	HET2-WG-50-150	Φ 52mm	9-32V	361-19 Ω	50-150°C	316L
D	802-00098	HET2-BG-50-150	Φ 52mm	9-32V	361-19 Ω	50-150°C	316L
E	802-00099	HET2-BS-50-150	Φ 52mm	9-32V	361-19 Ω	50-150°C	316L
F	802-00100	HET2-BN-50-150	Φ 52mm	9-32V	361-19 Ω	50-150°C	316L

Pressure Gauge



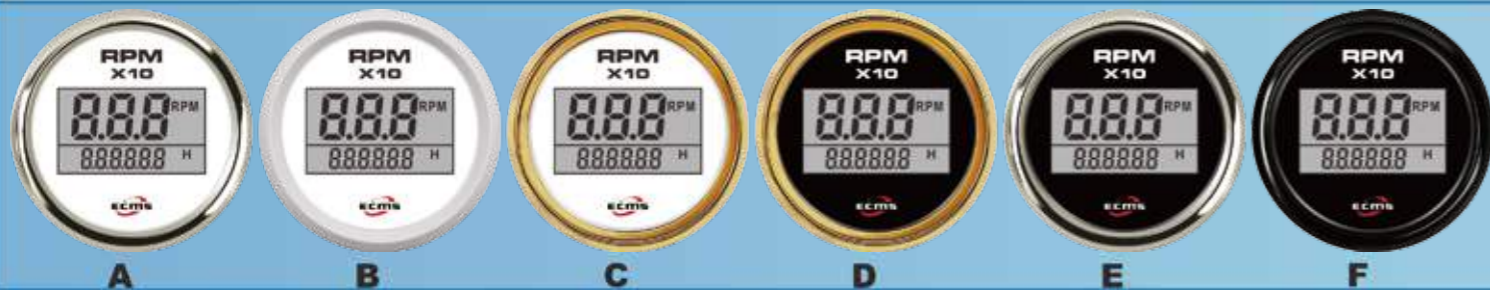
STYLE	P/N	Model	Installation Dia	Working Volt	Signal	Range	Bezel
A	802-00101	HEP2-WS-R	Φ 52mm	9-32V	10-184 Ω	Custom	316L
B	802-20021	HEP2-WW-R	Φ 52mm	9-32V	10-184 Ω	Custom	316L
C	802-00102	HEP2-WG-R	Φ 52mm	9-32V	10-184 Ω	Custom	316L
D	802-00103	HEP2-BG-R	Φ 52mm	9-32V	10-184 Ω	Custom	316L
E	802-00104	HEP2-BS-R	Φ 52mm	9-32V	10-184 Ω	Custom	316L
F	802-00105	HEP2-BN-R	Φ 52mm	9-32V	10-184 Ω	Custom	316L

Voltmeter



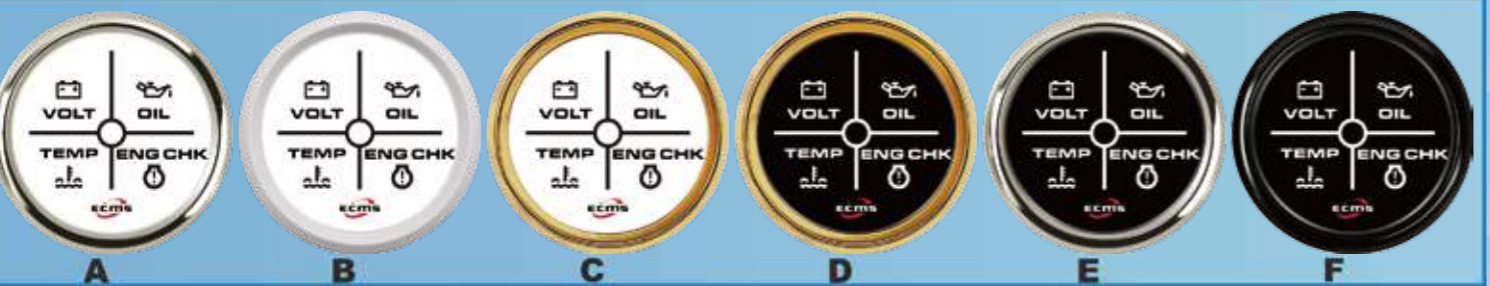
STYLE	P/N	Model	Installation Dia	Working Volt	Signal	Range	Bezel
A	802-00106	HEV2-WS-8-32	Φ 52mm	9-32V	8-32V	8-32V	316L
B	802-20022	HEV2-WW-8-32	Φ 52mm	9-32V	8-32V	8-32V	316L
C	802-00107	HEV2-WG-8-32	Φ 52mm	9-32V	8-32V	8-32V	316L
D	802-00108	HEV2-BG-8-32	Φ 52mm	9-32V	8-32V	8-32V	316L
E	802-00109	HEV2-BS-8-32	Φ 52mm	9-32V	8-32V	8-32V	316L
F	802-00110	HEV2-BN-8-32	Φ 52mm	9-32V	8-32V	8-32V	316L

Tachometer



STYLE	P/N	Model	Installation Dia	Working Volt	Signal	Range	Bezel
A	802-00161	HLT2-WS-RPM	Φ52mm	9-32V	Pulse	0-9990	316L
B	802-20033	HLT2-WW-RPM	Φ52mm	9-32V	Pulse	0-9990	316L
C	802-00162	HLT2-WG-RPM	Φ52mm	9-32V	Pulse	0-9990	316L
D	802-00163	HLT2-BG-RPM	Φ52mm	9-32V	Pulse	0-9990	316L
E	802-00164	HLT2-BS-RPM	Φ52mm	9-32V	Pulse	0-9990	316L
F	802-00165	HLT2-BN-RPM	Φ52mm	9-32V	Pulse	0-9990	316L

4LED Alarm Gauge



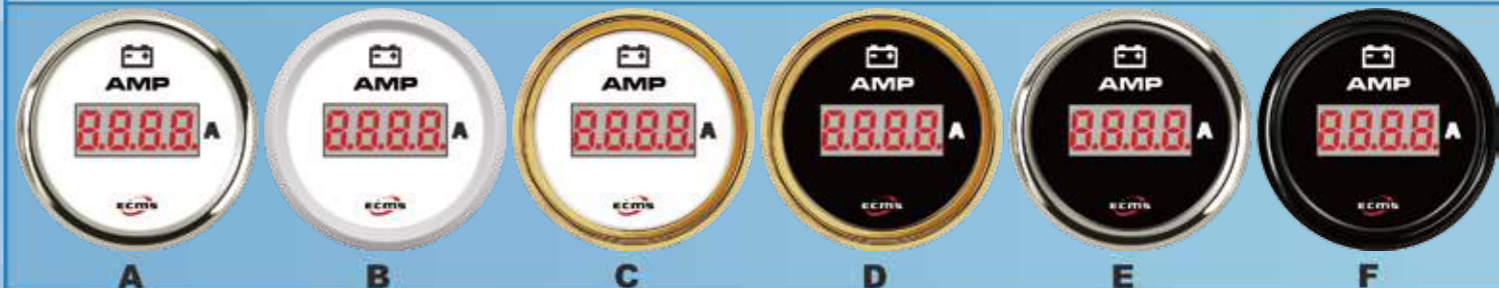
STYLE	P/N	Model	Installation Dia	Working Volt	Signal	Range	Bezel
A	802-00156	HDA2-WS-4LED	Φ52mm	9-32V	SWITCH		316L
B	802-20032	HDA2-WW-4LED	Φ52mm	9-32V	SWITCH		316L
C	802-00157	HDA2-WG-4LED	Φ52mm	9-32V	SWITCH		316L
D	802-00158	HDA2-BG-4LED	Φ52mm	9-32V	SWITCH		316L
E	802-00159	HDA2-BS-4LED	Φ52mm	9-32V	SWITCH		316L
F	802-00160	HDA2-BN-4LED	Φ52mm	9-32V	SWITCH		316L

Hourmeter



STYLE	P/N	Model	Installation Dia	Working Volt	Signal	Range	Bezel
A	802-00131	HLH2-WS-HS	Φ52mm	9-32V	NULL	0-99999.9	316L
B	802-20027	HLH2-WW-HS	Φ52mm	9-32V	NULL	0-99999.9	316L
C	802-00132	HLH2-WG-HS	Φ52mm	9-32V	NULL	0-99999.9	316L
D	802-00133	HLH2-BG-HS	Φ52mm	9-32V	NULL	0-99999.9	316L
E	802-00134	HLH2-BS-HS	Φ52mm	9-32V	NULL	0-99999.9	316L
F	802-00135	HLH2-BN-HS	Φ52mm	9-32V	NULL	0-99999.9	316L

Amperemeter



STYLE	P/N	Model	Installation Dia	Working Volt	Signal	Range	Bezel
A	802-00121	HEA2-WS ± 150A	Φ52mm	9-32V	0.5-4.5V	± 150A	316L
B	802-20025	HEA2-WW ± 150A	Φ52mm	9-32V	0.5-4.5V	± 150A	316L
C	802-00122	HEA2-WG ± 150A	Φ52mm	9-32V	0.5-4.5V	± 150A	316L
D	802-00123	HEA2-BG ± 150A	Φ52mm	9-32V	0.5-4.5V	± 150A	316L
E	802-00124	HEA2-BS ± 150A	Φ52mm	9-32V	0.5-4.5V	± 150A	316L
F	802-00125	HEA2-BN ± 150A	Φ52mm	9-32V	0.5-4.5V	± 150A	316L

GPS Speedometer



STYLE	P/N	Model	Installation Dia	Working Volt	Signal	Range	Bezel
A	802-00166	HLG2-WS-GPS	Φ 52mm	9-32V	GPS	0-999.9	316L
B	802-20034	HLG2-WW-GPS	Φ 52mm	9-32V	GPS	0-999.9	316L
C	802-00167	HLG2-WG-GPS	Φ 52mm	9-32V	GPS	0-999.9	316L
D	802-00168	HLG2-BG-GPS	Φ 52mm	9-32V	GPS	0-999.9	316L
E	802-00169	HLG2-BS-GPS	Φ 52mm	9-32V	GPS	0-999.9	316L
F	802-00170	HLG2-BN-GPS	Φ 52mm	9-32V	GPS	0-999.9	316L

Tachometer Speed Ratio:1-300



STYLE	P/N	Model	Installation Dia	Working Volt	Signal	Range	Bezel
A	802-00171	HLT2-WS-RPM	Φ 52mm	9-32V	Pulse	0-9999	316L
B	802-20035	HLT2-WW-RPM	Φ 52mm	9-32V	Pulse	0-9999	316L
C	802-00172	HLT2-WG-RPM	Φ 52mm	9-32V	Pulse	0-9999	316L
D	802-00173	HLT2-BG-RPM	Φ 52mm	9-32V	Pulse	0-9999	316L
E	802-00174	HLT2-BS-RPM	Φ 52mm	9-32V	Pulse	0-9999	316L
F	802-00175	HLT2-BN-RPM	Φ 52mm	9-32V	Pulse	0-9999	316L

Digital Multimeter



STYLE	P/N	Model	Installation Dia	Working Volt	Signal	Range	Bezel
A	802-00176	HLM2-WS-R	Φ 52mm	9-32V	RΩ	Custom	316L
B	802-20036	HLM2-WW-R	Φ 52mm	9-32V	RΩ	Custom	316L
C	802-00177	HLM2-WG-R	Φ 52mm	9-32V	RΩ	Custom	316L
D	802-00178	HLM2-BG-R	Φ 52mm	9-32V	RΩ	Custom	316L
E	802-00179	HLM2-BS-R	Φ 52mm	9-32V	RΩ	Custom	316L
F	802-00180	HLM2-BN-R	Φ 52mm	9-32V	RΩ	Custom	316L

Amperemeter



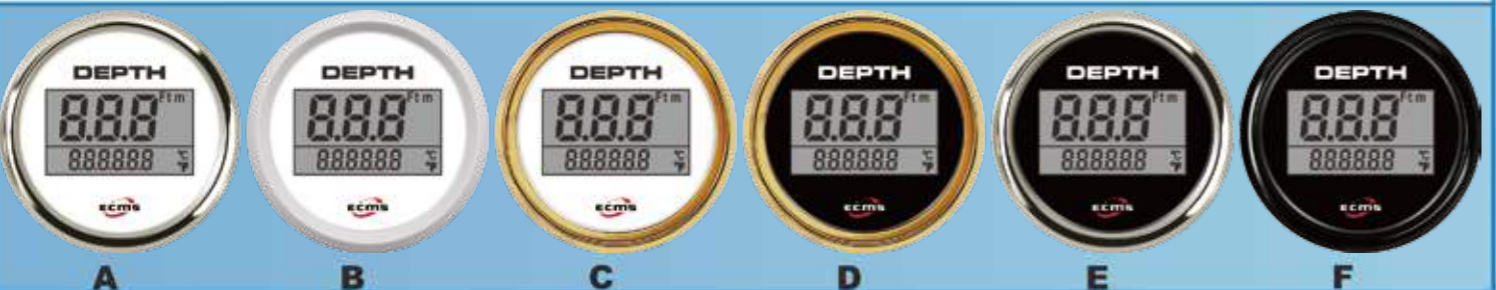
STYLE	P/N	Model	Installation Dia	Working Volt	Signal	Range	Bezel
A	802-00181	HLA2-WS ± 150A	Φ 52mm	9-32V	0.5-4.5V	± 150A	316L
B	802-20037	HLA2-WW ± 150A	Φ 52mm	9-32V	0.5-4.5V	± 150A	316L
C	802-00182	HLA2-WG ± 150A	Φ 52mm	9-32V	0.5-4.5V	± 150A	316L
D	802-00183	HLA2-BG ± 150A	Φ 52mm	9-32V	0.5-4.5V	± 150A	316L
E	802-00184	HLA2-BS ± 150A	Φ 52mm	9-32V	0.5-4.5V	± 150A	316L
F	802-00185	HLA2-BN ± 150A	Φ 52mm	9-32V	0.5-4.5V	± 150A	316L

GPS Speedometer



STYLE	P/N	Model	Installation Dia	Working Volt	Signal	Range	Bezel
A	802-00126	HLG2-WS-GPS	Φ 52mm	9-32V	GPS	0-999	316L
B	802-20026	HLG2-WW-GPS	Φ 52mm	9-32V	GPS	0-999	316L
C	802-00127	HLG2-WG-GPS	Φ 52mm	9-32V	GPS	0-999	316L
D	802-00128	HLG2-BG-GPS	Φ 52mm	9-32V	GPS	0-999	316L
E	802-00129	HLG2-BS-GPS	Φ 52mm	9-32V	GPS	0-999	316L
F	802-00130	HLG2-BN-GPS	Φ 52mm	9-32V	GPS	0-999	316L

Depth Gauge



STYLE	P/N	Model	Installation Dia	Working Volt	Signal	Range	Bezel
A	802-00146	HLD2-WS-FTM	Φ 52mm	9-32V	Transducer	1-70m	316L
B	802-20030	HLD2-WW-FTM	Φ 52mm	9-32V	Transducer	1-70m	316L
C	802-00147	HLD2-WG-FTM	Φ 52mm	9-32V	Transducer	1-70m	316L
D	802-00148	HLD2-BG-FTM	Φ 52mm	9-32V	Transducer	1-70m	316L
E	802-00149	HLD2-BS-FTM	Φ 52mm	9-32V	Transducer	1-70m	316L
F	802-00150	HLD2-BN-FTM	Φ 52mm	9-32V	Transducer	1-70m	316L

Tachometer

Speed Ratio:1-300



STYLE	P/N	Model	Installation Dia	Working Volt	Signal	Range	Bezel
A	902-00001	HMH3-WS-3KL	Φ 85mm	9-32V	Pulse	3KRPM	316L
A	902-00006	HMH3-WS-4KL	Φ 85mm	9-32V	Pulse	4KRPM	316L
A	902-00011	HMH3-WS-6KL	Φ 85mm	9-32V	Pulse	6KRPM	316L
A	902-00021	HMH3-WS-7KL	Φ 85mm	9-32V	Pulse	7KRPM	316L
A	902-00016	HMH3-WS-8KL	Φ 85mm	9-32V	Pulse	8KRPM	316L
B	902-20001	HMH3-WW-3KL	Φ 85mm	9-32V	Pulse	3KRPM	316L
B	902-20002	HMH3-WW-4KL	Φ 85mm	9-32V	Pulse	4KRPM	316L
B	902-20003	HMH3-WW-6KL	Φ 85mm	9-32V	Pulse	6KRPM	316L
B	902-20005	HMH3-WW-7KL	Φ 85mm	9-32V	Pulse	7KRPM	316L
B	902-20004	HMH3-WW-8KL	Φ 85mm	9-32V	Pulse	8KRPM	316L
C	902-00002	HMH3-WG-3KL	Φ 85mm	9-32V	Pulse	3KRPM	316L
C	902-00007	HMH3-WG-4KL	Φ 85mm	9-32V	Pulse	4KRPM	316L
C	902-00012	HMH3-WG-6KL	Φ 85mm	9-32V	Pulse	6KRPM	316L
C	902-00022	HMH3-WG-7KL	Φ 85mm	9-32V	Pulse	7KRPM	316L
C	902-00017	HMH3-WG-8KL	Φ 85mm	9-32V	Pulse	8KRPM	316L
D	902-00003	HMH3-BG-3KL	Φ 85mm	9-32V	Pulse	3KRPM	316L
D	902-00008	HMH3-BG-4KL	Φ 85mm	9-32V	Pulse	4KRPM	316L
D	902-00013	HMH3-BG-6KL	Φ 85mm	9-32V	Pulse	6KRPM	316L
D	902-00023	HMH3-BG-7KL	Φ 85mm	9-32V	Pulse	7KRPM	316L
D	902-00018	HMH3-BG-8KL	Φ 85mm	9-32V	Pulse	8KRPM	316L
E	902-00004	HMH3-BS-3KL	Φ 85mm	9-32V	Pulse	3KRPM	316L
E	902-00009	HMH3-BS-4KL	Φ 85mm	9-32V	Pulse	4KRPM	316L
E	902-00014	HMH3-BS-6KL	Φ 85mm	9-32V	Pulse	6KRPM	316L
E	902-00024	HMH3-BS-7KL	Φ 85mm	9-32V	Pulse	7KRPM	316L
E	902-00019	HMH3-BS-8KL	Φ 85mm	9-32V	Pulse	8KRPM	316L
F	902-00005	HMH3-BN-3KL	Φ 85mm	9-32V	Pulse	3KRPM	316L
F	902-00010	HMH3-BN-4KL	Φ 85mm	9-32V	Pulse	4KRPM	316L
F	902-00015	HMH3-BN-6KL	Φ 85mm	9-32V	Pulse	6KRPM	316L
F	902-00025	HMH3-BN-7KL	Φ 85mm	9-32V	Pulse	7KRPM	316L
F	902-00020	HMH3-BN-8KL	Φ 85mm	9-32V	Pulse	8KRPM	316L

GPS Speedometer



STYLE	P/N	Model	Installation Dia	Working Volt	Signal	Range	Bezel
A	902-00076	HMG3-WS-120KL	Φ 85mm	9-32V	GPS	120km/h	316L
A	902-00081	HMG3-WS-200KL	Φ 85mm	9-32V	GPS	200km/h	316L
B	902-20016	HMG3-WW-120KL	Φ 85mm	9-32V	GPS	120km/h	316L
B	902-20017	HMG3-WW-200KL	Φ 85mm	9-32V	GPS	200km/h	316L
C	902-00077	HMG3-WG-120KL	Φ 85mm	9-32V	GPS	120km/h	316L
C	902-00082	HMG3-WG-200KL	Φ 85mm	9-32V	GPS	200km/h	316L
D	902-00078	HMG3-BG-120KL	Φ 85mm	9-32V	GPS	120km/h	316L
D	902-00083	HMG3-BG-200KL	Φ 85mm	9-32V	GPS	200km/h	316L
E	902-00079	HMG3-BS-120KL	Φ 85mm	9-32V	GPS	120km/h	316L
E	902-00084	HMG3-BS-200KL	Φ 85mm	9-32V	GPS	200km/h	316L
F	902-00080	HMG3-BN-120KL	Φ 85mm	9-32V	GPS	120km/h	316L
F	902-00085	HMG3-BN-200KL	Φ 85mm	9-32V	GPS	200km/h	316L

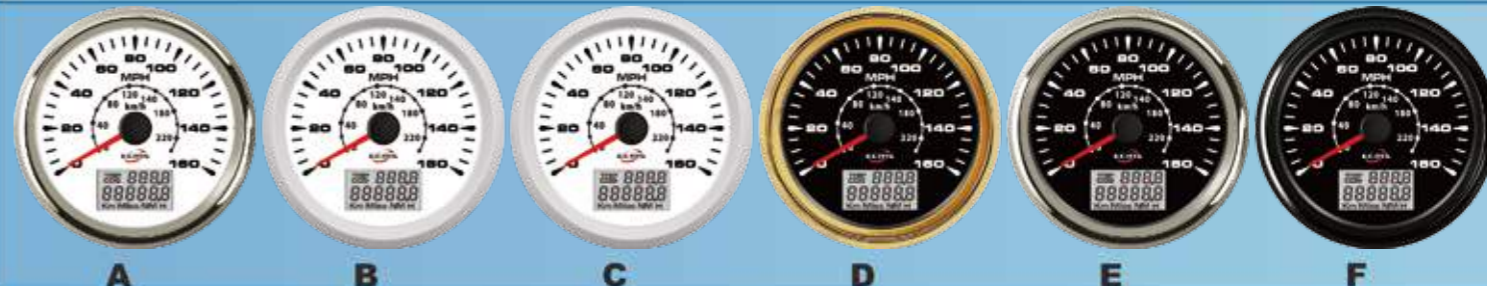
GPS Speedometer

The user can adjust speed unit



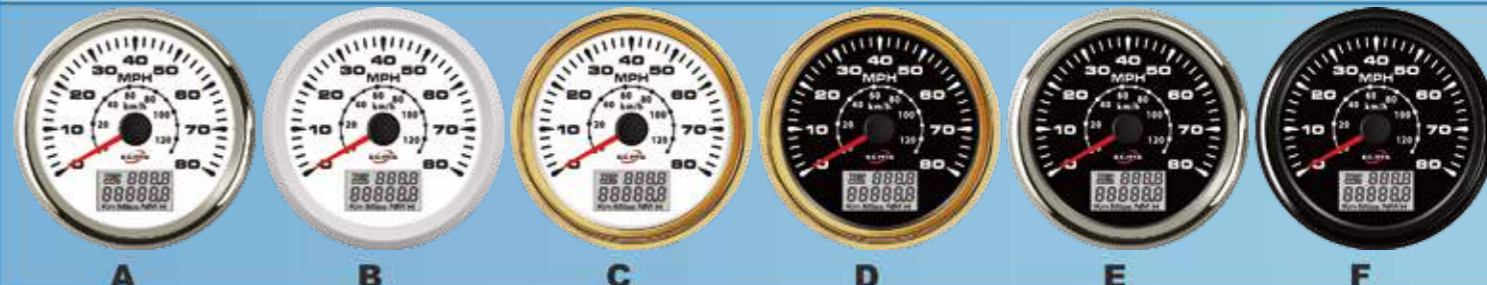
STYLE	P/N	Model	Installation Dia	Working Volt	Signal	Range	Bezel
A	902-00031	HLG3-WS-GPS	Φ 85mm	9-32V	GPS	0-999	316L
B	902-20007	HLG3-WW-GPS	Φ 85mm	9-32V	GPS	0-999	316L
C	902-00032	HLG3-WG-GPS	Φ 85mm	9-32V	GPS	0-999	316L
D	902-00033	HLG3-BG-GPS	Φ 85mm	9-32V	GPS	0-999	316L
E	902-00034	HLG3-BS-GPS	Φ 85mm	9-32V	GPS	0-999	316L
F	902-00035	HLG3-BN-GPS	Φ 85mm	9-32V	GPS	0-999	316L

GPS Speedometer



STYLE	P/N	Model	Installation Dia	Working Volt	Signal	Range	Bezel
A	902-00141	HMG3-WS-160ML	Φ 85mm	9-32V	GPS	160MPH	316L
A	902-00136	HMG3-WS-200ML	Φ 85mm	9-32V	GPS	200MPH	316L
B	902-20029	HMG3-WW-160ML	Φ 85mm	9-32V	GPS	160MPH	316L
B	902-20028	HMG3-WW-200ML	Φ 85mm	9-32V	GPS	200MPH	316L
C	902-00142	HMG3-WG-160ML	Φ 85mm	9-32V	GPS	160MPH	316L
C	902-00137	HMG3-WG-200ML	Φ 85mm	9-32V	GPS	200MPH	316L
D	902-00143	HMG3-BG-160ML	Φ 85mm	9-32V	GPS	160MPH	316L
D	902-00138	HMG3-BG-200ML	Φ 85mm	9-32V	GPS	200MPH	316L
E	902-00144	HMG3-BS-160ML	Φ 85mm	9-32V	GPS	160MPH	316L
E	902-00139	HMG3-BS-200ML	Φ 85mm	9-32V	GPS	200MPH	316L
F	902-00145	HMG3-BN-160ML	Φ 85mm	9-32V	GPS	160MPH	316L
F	902-00140	HMG3-BN-200ML	Φ 85mm	9-32V	GPS	200MPH	316L

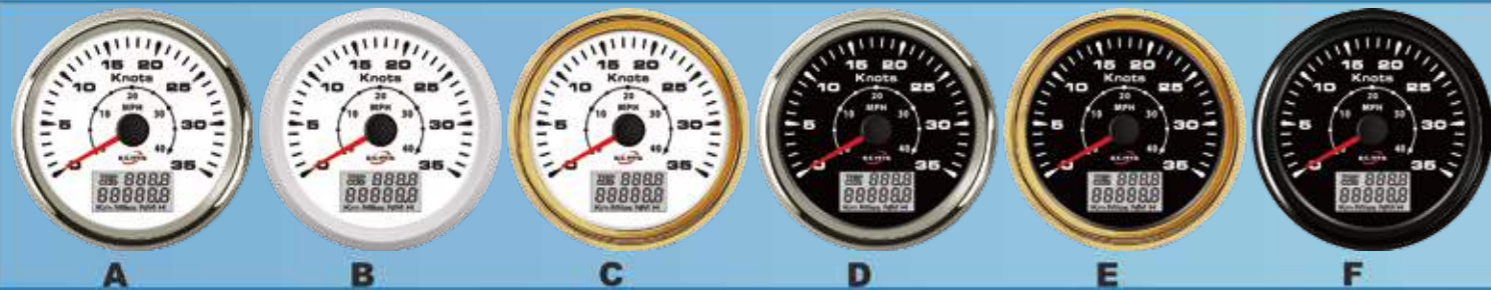
GPS Speedometer



STYLE	P/N	Model	Installation Dia	Working Volt	Signal	Range	Bezel
A	902-00051	HMG3-WS-35ML	Φ 85mm	9-32V	GPS	35MPH	316L
A	902-00056	HMG3-WS-80ML	Φ 85mm	9-32V	GPS	80MPH	316L
B	902-20011	HMG3-WW-35ML	Φ 85mm	9-32V	GPS	35MPH	316L
B	902-20012	HMG3-WW-80ML	Φ 85mm	9-32V	GPS	80MPH	316L
C	902-00052	HMG3-WG-35ML	Φ 85mm	9-32V	GPS	35MPH	316L
C	902-00057	HMG3-WG-80ML	Φ 85mm	9-32V	GPS	80MPH	316L
D	902-00053	HMG3-BG-35ML	Φ 85mm	9-32V	GPS	35MPH	316L
D	902-00058	HMG3-BG-80ML	Φ 85mm	9-32V	GPS	80MPH	316L
E	902-00054	HMG3-BS-35MLL	Φ 85mm	9-32V	GPS	35MPH	316L
E	902-00059	HMG3-BS-80ML	Φ 85mm	9-32V	GPS	80MPH	316L
F	902-00055	HMG3-BN-35ML	Φ 85mm	9-32V	GPS	35MPH	316L
F	902-00060	HMG3-BN-80ML	Φ 85mm	9-32V	GPS	80MPH	316L

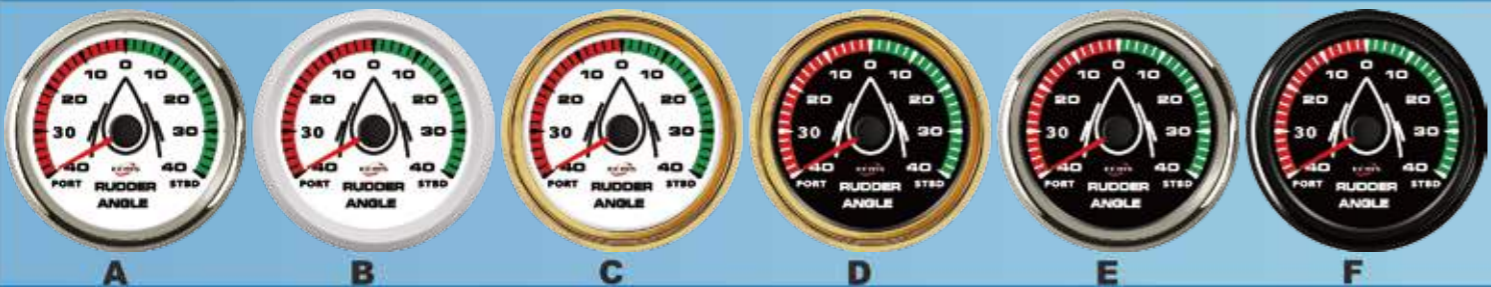


GPS Speedometer



STYLE	P/N	Model	Installation Dia	Working Volt	Signal	Range	Bezel
A	902-00036	HMG3-WS-15NL	Φ85mm	9-32V	GPS	15Knots	316L
A	902-00041	HMG3-WS-35NL	Φ85mm	9-32V	GPS	35Knots	316L
A	902-00046	HMG3-WS-70NL	Φ85mm	9-32V	GPS	70Knots	316L
B	902-20008	HMG3-WW-15NL	Φ85mm	9-32V	GPS	15Knots	316L
B	902-20009	HMG3-WW-35NL	Φ85mm	9-32V	GPS	35Knots	316L
B	902-20010	HMG3-WW-70NL	Φ85mm	9-32V	GPS	70Knots	316L
C	902-00037	HMG3-WG-15NL	Φ85mm	9-32V	GPS	15Knots	316L
C	902-00042	HMG3-WG-35NL	Φ85mm	9-32V	GPS	35Knots	316L
C	902-00047	HMG3-WG-70NL	Φ85mm	9-32V	GPS	70Knots	316L
D	902-00038	HMG3-BG-15NL	Φ85mm	9-32V	GPS	15Knots	316L
D	902-00043	HMG3-BG-35NL	Φ85mm	9-32V	GPS	35Knots	316L
D	902-00048	HMG3-BG-70NL	Φ85mm	9-32V	GPS	70Knots	316L
E	902-00039	HMG3-BS-15NL	Φ85mm	9-32V	GPS	15Knots	316L
E	902-00044	HMG3-BS-35NL	Φ85mm	9-32V	GPS	35Knots	316L
E	902-00049	HMG3-BS-70NL	Φ85mm	9-32V	GPS	70Knots	316L
F	902-00040	HMG3-BN-15NL	Φ85mm	9-32V	GPS	15Knots	316L
F	902-00045	HMG3-BN-35NL	Φ85mm	9-32V	GPS	35Knots	316L
F	902-00050	HMG3-BN-70NL	Φ85mm	9-32V	GPS	70Knots	316L

Rudder Angle Indicator



STYLE	P/N	Model	Installation Dia	Working Volt	Signal	Range	Bezel
A	902-00071	HMR3-WS-0-190	Φ85mm	9-32V	0-190Ω	STBD-PORT	316L
B	902-20015	HMR3-WW-0-190	Φ85mm	9-32V	0-190Ω	STBD-PORT	316L
C	902-00072	HMR3-WG-0-190	Φ85mm	9-32V	0-190Ω	STBD-PORT	316L
D	902-00073	HMR3-BG-0-190	Φ85mm	9-32V	0-190Ω	STBD-PORT	316L
E	902-00074	HMR3-BS-0-190	Φ85mm	9-32V	0-190Ω	STBD-PORT	316L
F	902-00075	HMR3-BN-0-190	Φ85mm	9-32V	0-190Ω	STBD-PORT	316L

Multifunction Gauge-6(12V)



STYLE	P/N	Model	Installation Dia	Working Volt	Signal	Range	Bezel
A	902-00116	HMS3-WS-6C125	Φ85mm	8-16V	GPS,Pulse	5Bar	316L
A	902-00121	HMS3-WS-6C1210	Φ85mm	8-16V	GPS,Pulse	10Bar	316L
B	902-20024	HMS3-WW-6C125	Φ85mm	8-16V	GPS,Pulse	5Bar	316L
B	902-20025	HMS3-WW-6C1210	Φ85mm	8-16V	GPS,Pulse	10Bar	316L
C	902-00117	HMS3-WG-6C125	Φ85mm	8-16V	GPS,Pulse	5Bar	316L
C	902-00122	HMS3-WG-6C1210	Φ85mm	8-16V	GPS,Pulse	10Bar	316L
D	902-00118	HMS3-BG-6C125	Φ85mm	8-16V	GPS,Pulse	5Bar	316L
D	902-00123	HMS3-BG-6C1210	Φ85mm	8-16V	GPS,Pulse	10Bar	316L
E	902-00119	HMS3-BS-6C125	Φ85mm	8-16V	GPS,Pulse	5Bar	316L
E	902-00124	HMS3-BS-6C1210	Φ85mm	8-16V	GPS,Pulse	10Bar	316L
F	902-00120	HMS3-BN-6C125	Φ85mm	8-16V	GPS,Pulse	5Bar	316L
F	902-00125	HMS3-BN-6C1210	Φ85mm	8-16V	GPS,Pulse	10Bar	316L

Multifunction Gauge-6(24V)



STYLE	P/N	Model	Installation Dia	Working Volt	Signal	Range	Bezel
A	902-00126	HMS3-WS-6C245	Φ85mm	18-32V	GPS,Pulse	5Bar	316L
A	902-00131	HMS3-WS-6C2410	Φ85mm	18-32V	GPS,Pulse	10Bar	316L
B	902-20026	HMS3-WW-6C245	Φ85mm	18-32V	GPS,Pulse	5Bar	316L
B	902-20027	HMS3-WW-6C2410	Φ85mm	18-32V	GPS,Pulse	10Bar	316L
C	902-00127	HMS3-WG-6C245	Φ85mm	18-32V	GPS,Pulse	5Bar	316L
C	902-00132	HMS3-WG-6C2410	Φ85mm	18-32V	GPS,Pulse	10Bar	316L
D	902-00128	HMS3-BG-6C245	Φ85mm	18-32V	GPS,Pulse	5Bar	316L
D	902-00133	HMS3-BG-6C2410	Φ85mm	18-32V	GPS,Pulse	10Bar	316L
E	902-00129	HMS3-BS-6C245	Φ85mm	18-32V	GPS,Pulse	5Bar	316L
E	902-00134	HMS3-BS-6C2410	Φ85mm	18-32V	GPS,Pulse	10Bar	316L
F	902-00130	HMS3-BN-6C245	Φ85mm	18-32V	GPS,Pulse	5Bar	316L
F	902-00135	HMS3-BN-6C2410	Φ85mm	18-32V	GPS,Pulse	10Bar	316L

MECHANICAL PRESSURE SENSOR

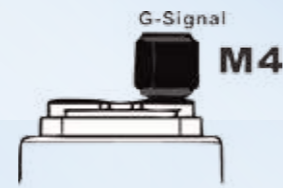
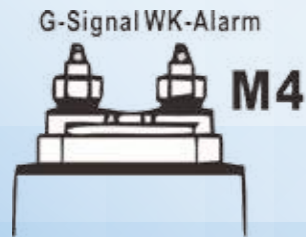
PRESSURE SENSOR has merits of simple, easy use, high cost effective, stable performance, reliable etc, standard resistance signal output, wide working temperature range, usually use in engineering machinery, measurement system of engine/alternator vessel or equipment. Also can be used to monitor hydraulic pressure, air pressure.

PRESSURE SENSOR



Technical Parameters:

- Working voltage:6-24V
- Working temperature: -25~120°C ( 120°C, < 1H)
- Range: : 0-5Bar, 0-10Bar(or customize)
- Range: : 0-5Bar, 0-10Bar(or customize)
- Output signal: 10-184 Ω or 240-33Ω
- Mounting Thread: NPT1/8、NPT1/4、M10X1 or customize



TEMPERATURE SENSOR

TEMPERATURE SENSOR has merits of simple, easy use, high cost effective, stable performance, reliable etc, output signal can be customized, can be used in engineering machinery, temperature measurement system of engine/alternator vessel or equipment. Can be used to measure water temperature, oil temperature etc.

TEMPERATURE SENSOR



Technical Parameters:

- Working voltage:6-24V
- Working temperature: -40~150°C
- Range: : customize per request
- Alarm point: 96°C、98°C、120°C or customize
- Output signal: customize per request
- Mounting Thread: 3/8-18NPT、1/8-27NPT、1/2-14NPT、M14、M16 or customize

ADAPTER



D E F A B C

STYLE	P/N	Specifications	Internal thread	External thread	Material
A	880-00027	1/8" NPT to 1/4" NPT	NPT-1/8	NPT-1/4	Cu
B	880-00028	1/8" NPT to 3/8" NPT	NPT-1/8	NPT-3/8	Cu
C	880-00029	1/8" NPT to 1/2" NPT	NPT-1/8	NPT-1/2	Cu
D	880-00030	1/8" NPT to M12 x 1.5	NPT-1/8	M12 x 1.5	Cu
E	880-00031	1/8" NPT to M14 x 1.5	NPT-1/8	M14 x 1.5	Cu
F	880-00032	1/8" NPT to M16 x 1.5	NPT-1/8	M16 x 1.5	Cu

LIQUID LEVEL SENSOR

LIQUID LEVEL SENSOR has merits of simple, easy use, high cost effective, stable performance, reliable etc, standard resistance signal output. Working temperature range is relatively wide. Material SUS304 or SUS316 can be customized per request. Sensor signal output can be customized.



C5L

C3

C5

C5D

Flange

SPEED SENSOR

SPEED SENSOR



Technical Parameters:

- Working Temperature: -30~85°C
- Reading range: ≤1mm
- Output signal: sine wave
- Mounting Thread: M16、M18、UNF5/8、UNF3/4、UNF3/8 or customize

ELECTRONIC PRESSURE SENSOR

Electronic pressure sensor work with long life, high precision, easy to install. Customized range ,thread, accuracy(±1%FS, ±0.25%FS and so on) ,etc are als be provied



4921493

4921489

4921487

4921479

4921477

4921475

4921473



2897690

4327021

3408607

4921519

4928594

4928593

4921519



4921517

4921511

4921505

4921503

4921501

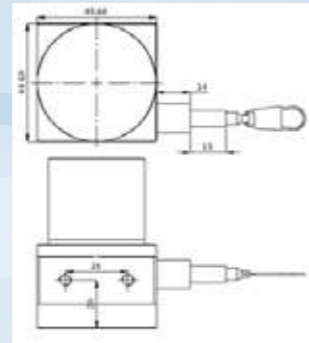
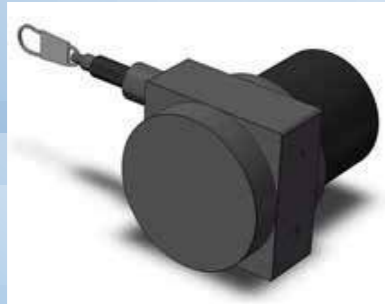
4921499

4921497

4921495

RUDDER ANGLE SENSOR

RUDDER ANGLE SENSOR has merits of simple, easy use, high cost effective, stable performance, standard resistance output signal. Working temperature application is relatively wide, can be used for measure rotation angle, such

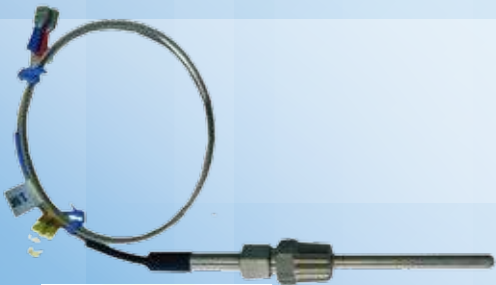


5°C  
Ω、0-10KΩ或定制



EXHAUST TEMPERATURE SENOSR

EXHAUST TEMPERATURE sensor has merits of simple, easy use, high cost effective, stable performance etc, standard resistance output signal. Used to measure temperature of engine exhaust temperature.



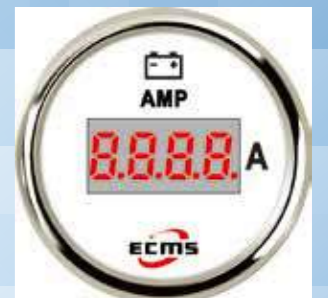
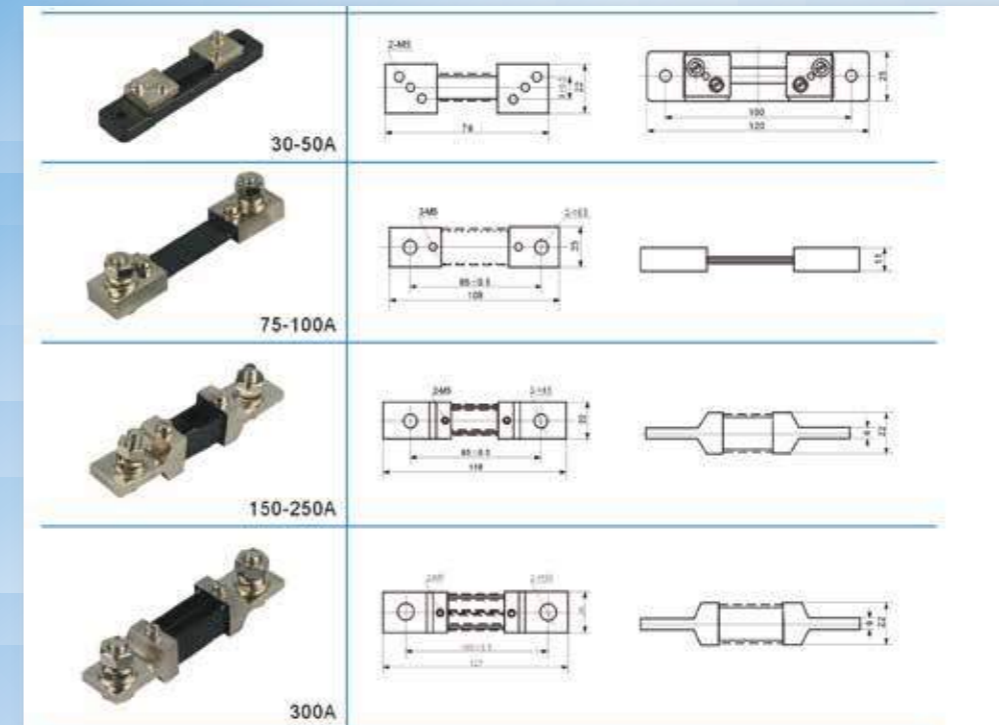
Technical Parameters:

- Temperature test range: 0-800°C
- Sensor type: K type thermocouple
- Mounting Thread: 3/8 NPT、1/8 FPT or customize



AMPERE SENSOR

AMPERE SENSOR has merits of simple, easy use, high cost effective, stable performance etc, used to monitor electricity dynamic changes of vessel, car, engineering, engines and generators when working.



Technical Parameters:

- Working voltage: 0-36V or 5.0V
- Working temperature: -30~80°C
- Range: ± 50A、± 80A、± 150A、± 300A
- Output Singnal: 0-75mV or 0.5-4.5V

