

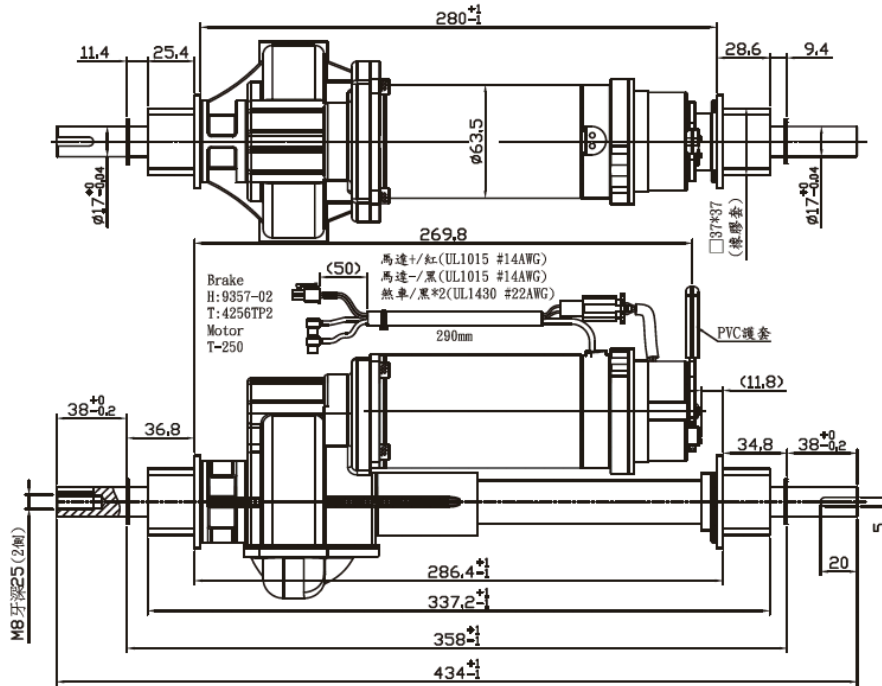
DC Brush Motor

Scooter-SC63 Series (4Poles)

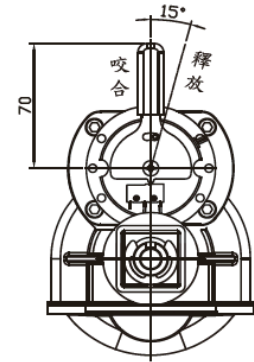
差速器馬達 / Transaxle Motor



● 圖紙 / Drawing

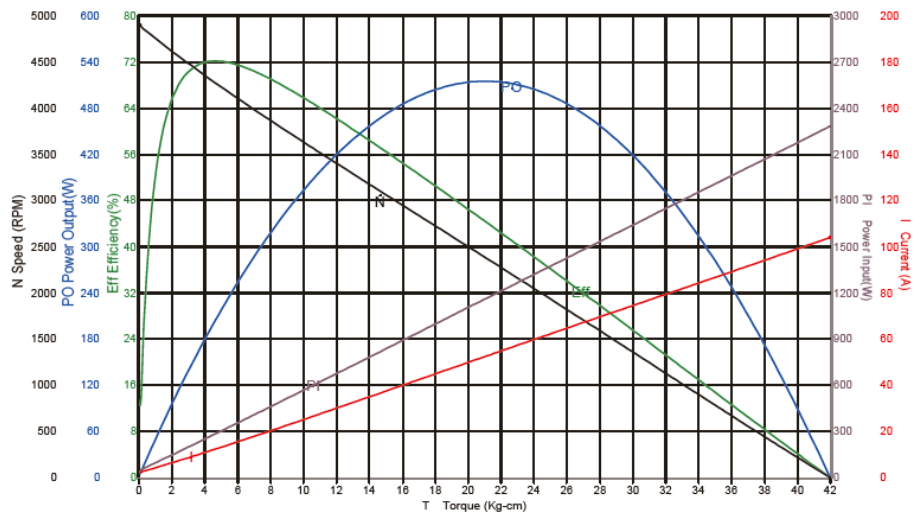


MODEL: 21:1
 RATIO: 21:1
 MOTOR: DC24V 2.8A(max)
 OUTPUT: 270W
 SPEED: 4800±100rpm
 BRAKE: DC24V 0.45A 30Kgf-cm
 NOISE: 65dBA(max)



附件: 5*5*20單圓鍵*2

● 曲線圖 / Curve



● 規格 / Spec.

馬達機種 / Motor Type	Model SC63 系列 (4 極) / SC63 Series (4Poles)
外徑 Diameter	Φ63
IP 等級 IP Degree	IP44
電壓 Voltage	12V / 24V / 36V / 48V
輸出功率 Output Watt	80W ~ 270W
減速比 Gearbox Ratio	21:1
轉速 RPM	2500 - 5700
額定載重 Rated Loading	150KG