

Yeong Long



PROFESSIONAL

[www.yeonglong.com.tw](http://www.yeonglong.com.tw)

創新技術本位 多年豐富經驗



油壓夾管機  
HYDRAULIC HOSE CRIMPING MACHINE

YTK CO.,LTD.



Certificate No:84Q13800

CE TÜV Rheinland Certified

## About YL

Yeong Long (YL) established in 1988, started off selling hydraulic hose and fittings as our major business. Years of the experience in making crimping machines including workshop crimping machines, serial production crimping machines, industrial crimping machines, nut machines, skiver machine, cutting machines and test bench machine ... etc.

Yeong Long is the first Taiwanese manufacturer to develop, produce our own crimping machine and export to countries around the world.

From raw material to assembly, each part of processing was done by Yeong Long to achieve high quality, high precision and high durability.











永隆，建立於1988，初期主要以買賣油壓接頭，累積多年油壓經驗，發揮專業能力開發扣壓機及相關機器，有：一般生產型扣壓機，連續大量行扣壓機，工業用扣壓機，螺母扣壓機，削皮機及爆破機...等。

永隆是台灣第一個開發及出口到世界各國的台灣製造商。

我們的機器從原料、加工及加工處理，一條龍生產、製造到組裝，每一個製程都受到嚴格管理，達到高品質，高精準度及高耐用度。



## Contents

|   |   |    |
|---|---|----|
|   | <b>About YL</b> .....                           | 1  |
|    | <b>Mobile Crimpers</b> .....                    | 3  |
|   | CS-20 — 1 1/4"                                  |    |
|   | CS-32 — 2"                                      |    |
|    | <b>Workshop Crimpers</b> .....                  | 4  |
|   | YL-20 — 1 1/4"                                  |    |
|   | YL-20S — 1 1/4"                                 |    |
|   | YL-32 — 2"                                      |    |
|    | <b>Serial Production Crimpers</b> .....         | 5  |
|   | YL-40 — 1"                                      |    |
|   | YL-45 — 1 1/4"                                  |    |
|   | YL-65 — 2"                                      |    |
|   | YL-80 — 4"                                      |    |
|   | <b>Industrial Crimpers - Big Diameter</b> ..... | 7  |
|   | YL-125 — 6"                                     |    |
|   | YL-330 — 12"                                    |    |
|  | <b>Side Feed Crimpers</b> .....                 | 8  |
|   | SF-30 — 1"                                      |    |
|   | SF-60 — 1 1/4"                                  |    |
|  | <b>Handy Crimpers</b> .....                     | 9  |
|   | YL-16HPZ — 1"                                   |    |
|   | YL-16HP — 1"                                    |    |
|   | YL-16AP — 1"                                    |    |
|  | <b>Nut Crimpers</b> .....                       | 10 |
|   | NC-20 — 1 1/4"                                  |    |
|   | NC-30 — 2"                                      |    |
|  | <b>Hose Cutter</b> .....                        | 11 |
|   | CM-50 — 2" 4SH                                  |    |
|   | CM-120 — 2" 4SH                                 |    |
|  | <b>Hose Skiver</b> .....                        | 12 |
|   | HSK-16 — 2" 4SP                                 |    |
|   | SK-16 — 2" 4SP                                  |    |
|  | <b>Hose Test Bench</b> .....                    | 13 |
|   | BT-2100 — 2100 kg                               |    |
|   | <b>Die Type / Accessory</b> .....               | 13 |

## MOBILE CRIMPERS

### 車載型扣壓機



## CS-20

| 型號 MODEL                     | CS-20        |
|------------------------------|--------------|
| 最大扣壓管徑 Max Hose Size         | 1 1/4"       |
| 扣壓範圍 Crimping Range (mm)     | φ4... φ87    |
| 模具型號 Die Type                | 32           |
| 模具擴張度 Max. Opening (mm)      | +26          |
| 主要模具長度 Master Die D / L (mm) | 99 / 80      |
| 馬達 Motor (kW)                | 1.6 / 2.2    |
| 電壓 Voltage (V)               | DC 12V / 24V |
| 泵浦 Pump (cc / rev)           | 1.5 / 3      |
| 扣壓力 Crimping Force (kN)      | 1700         |
| 扣壓量 (每小時)* Crimpings Hour *  | -----        |
| 噪音值 Noise level (dB(A))      | 71           |
| 保護等級 Protection Class        | IP54         |
| 尺寸 size: length (mm)         | 600          |
| width (mm)                   | 500          |
| height (mm)                  | 500          |
| weight (kg)                  | 120          |

- With standard dies : 14, 16, 19, 22, 26, 30, 34, 39, 45.
- With standard accessories : Manual Change.
- 隨機標準配件: 手動換模
- \* Theoretical with 1/2" hose Δ φ 10mm

## CS-32

| 型號 MODEL                     | CS-32        |
|------------------------------|--------------|
| 最大扣壓管徑 Max Hose Size         | 2"           |
| 扣壓範圍 Crimping Range (mm)     | φ4... φ87    |
| 模具型號 Die Type                | 32           |
| 模具擴張度 Max. Opening (mm)      | +32          |
| 主要模具長度 Master Die D / L (mm) | 99 / 80      |
| 馬達 Motor (kW)                | 1.6 / 2.2    |
| 電壓 Voltage (V)               | DC 12V / 24V |
| 泵浦 Pump (cc / rev)           | 1.5 / 3      |
| 扣壓力 Crimping Force (kN)      | 2200         |
| 扣壓量 (每小時)* Crimpings Hour *  | -----        |
| 噪音值 Noise level (dB(A))      | 71           |
| 保護等級 Protection Class        | IP54         |
| 尺寸 size: length (mm)         | 600          |
| width (mm)                   | 500          |
| height (mm)                  | 530          |
| weight (kg)                  | 160          |

- With standard dies : 14, 16, 19, 22, 26, 30, 34, 39, 45, 51, 63, 69
- With standard accessories : Manual Change.
- 隨機標準配件: 手動換模
- \* Theoretical with 1/2" hose Δ φ 10mm



## WORKSHOP CRIMPERS

### 一般生產型扣壓機

## YL-20 / YL20S

| 型號 MODEL                     | YL-20/YL20S |
|------------------------------|-------------|
| 最大扣壓管徑 Max Hose Size         | 1 1/4"      |
| 扣壓範圍 Crimping Range (mm)     | φ4... φ87   |
| 模具型號 Die Type                | 32          |
| 模具擴張度 Max. Opening (mm)      | +26         |
| 主要模具長度 Master Die D / L (mm) | 99 / 80     |
| 馬達 Motor (kW)                | 3.6         |
| 電壓 Voltage (V)               | 220 / 440   |
| 泵浦 Pump (l / min)            | 11.5        |
| 扣壓力 Crimping Force (kN)      | 1700        |
| 扣壓量 (每小時)* Crimpings Hour *  | 1800        |
| 噪音值 Noise level (dB(A))      | 71          |
| 保護等級 Protection Class        | IP54        |
| 尺寸 size: length (mm)         | 610/680     |
| width (mm)                   | 600/600     |
| height (mm)                  | 600/1350    |
| weight (kg)                  | 200/230     |

- With standard dies : 14,16,19,22,26,30,34,39,45.
- With standard accessories : Manual Change, Back Stop Device, /Quick Change, Cupboard(YL-20S)
- The maximum dies set can be allowed for 78mm.
- 隨機標準配件: 手動換模、定尺裝置/快速換模、模具座(YL-20S)
- 最大可使用模具至78mm
- \* Theoretical with 1/2" hose Δ φ 10mm



## YL-32

| 型號 MODEL                     | YL-32     |
|------------------------------|-----------|
| 最大扣壓管徑 Max Hose Size         | 2"        |
| 扣壓範圍 Crimping Range (mm)     | φ4... φ87 |
| 模具型號 Die Type                | 32        |
| 模具擴張度 Max. Opening (mm)      | +32       |
| 主要模具長度 Master Die D / L (mm) | 99 / 80   |
| 馬達 Motor (kW)                | 3.6       |
| 電壓 Voltage (V)               | 220 / 440 |
| 泵浦 Pump (l / min)            | 11.5      |
| 扣壓力 Crimping Force (kN)      | 2200      |
| 扣壓量 (每小時)* Crimpings Hour *  | 1200      |
| 噪音值 Noise level (dB(A))      | 71        |
| 保護等級 Protection Class        | IP54      |
| 尺寸 size: length (mm)         | 680       |
| width (mm)                   | 600       |
| height (mm)                  | 1400      |
| weight (kg)                  | 270       |

- With standard dies : 14,16,19,22,26,30,34,39,45, 51,63,69.
- With standard accessories : Manual Change, Back Stop Device, Quick Change.
- The maximum dies set can be allowed for 78mm.
- 隨機標準配件: 手動換模、定尺裝置、快速換模
- 最大可使用模具至78mm
- \* Theoretical with 1/2" hose Δ φ 10mm



## SERIAL PRODUCTION CRIMPERS

連續大量生產扣壓機



### YL-40

| 型號 MODEL                       | YL-40       |
|--------------------------------|-------------|
| 最大扣壓管徑 Max Hose Size           | 1"          |
| 扣壓範圍 Crimping Range ( mm )     | φ 4... φ 45 |
| 模具型號 Die Type                  | 16          |
| 模具擴張度 Max. Opening ( mm )      | +40         |
| 主要模具長度 Master Die D / L ( mm ) | 45 / 60     |
| 馬達 Motor ( kW )                | 3.6         |
| 電壓 Voltage ( V )               | 220 / 440   |
| 泵浦 Pump ( l / min )            | 28          |
| 扣壓力 Crimping Force ( kN )      | 1200        |
| 扣壓量 ( 每小時 ) * Crimpings Hour * | 1500        |
| 噪音值 Noise level ( dB(A) )      | 71          |
| 保護等級 Protection Class          | IP54        |
| 尺寸 size: length ( mm )         | 570         |
| width ( mm )                   | 920         |
| height ( mm )                  | 1400        |
| weight ( kg )                  | 580         |

- With standard dies : 16,19,23,27,31,37
- With standard accessories : Back Stop Device, Foot Pedal (B).
- 隨機標準配件: 定尺裝置、腳踏開關(B)
- \* Theoretical with 1/2" hose Δ φ 10mm

### YL-45

| 型號 MODEL                       | YL-45       |
|--------------------------------|-------------|
| 最大扣壓管徑 Max Hose Size           | 1 1/4"      |
| 扣壓範圍 Crimping Range ( mm )     | φ 4... φ 87 |
| 模具型號 Die Type                  | 32          |
| 模具擴張度 Max. Opening ( mm )      | +45         |
| 主要模具長度 Master Die D / L ( mm ) | 99 / 97     |
| 馬達 Motor ( kW )                | 3.6         |
| 電壓 Voltage ( V )               | 220 / 440   |
| 泵浦 Pump ( l / min )            | 36          |
| 扣壓力 Crimping Force ( kN )      | 1500        |
| 扣壓量 ( 每小時 ) * Crimpings Hour * | 1500        |
| 噪音值 Noise level ( dB(A) )      | 71          |
| 保護等級 Protection Class          | IP54        |
| 尺寸 size: length ( mm )         | 570         |
| width ( mm )                   | 920         |
| height ( mm )                  | 1450        |
| weight ( kg )                  | 755         |

- With standard dies : 14,16,19,22,26,30,34,39,45
- With standard accessories : Manual Change, Back Stop Device, Quick Change, Foot Pedal (B).
- 隨機標準配件: 手動換模、定尺裝置、快速換模、腳踏開關(B)
- \* Theoretical with 1/2" hose Δ φ 10mm



## SERIAL PRODUCTION CRIMPERS

連續大量生產扣壓機



### YL-65

| 型號 MODEL                       | YL-65       |
|--------------------------------|-------------|
| 最大扣壓管徑 Max Hose Size           | 2"          |
| 扣壓範圍 Crimping Range ( mm )     | φ 4... φ 87 |
| 模具型號 Die Type                  | 32          |
| 模具擴張度 Max. Opening ( mm )      | +65         |
| 主要模具長度 Master Die D / L ( mm ) | 99 / 97     |
| 馬達 Motor ( kW )                | 5.5         |
| 電壓 Voltage ( V )               | 220 / 440   |
| 泵浦 Pump ( l / min )            | 48          |
| 扣壓力 Crimping Force ( kN )      | 2400        |
| 扣壓量 ( 每小時 ) * Crimpings Hour * | 2400        |
| 噪音值 Noise level ( dB(A) )      | 71          |
| 保護等級 Protection Class          | IP54        |
| 尺寸 size: length ( mm )         | 860         |
| width ( mm )                   | 1000        |
| height ( mm )                  | 1600        |
| weight ( kg )                  | 1200        |

- With standard dies : 14,16,19,22,26,30,34,39,45, 51,57,63,69,74,78.
- With standard accessories : Manual Change, Back Stop Device, Quick Change, Foot Pedal (A).
- 隨機標準配件: 手動換模、定尺裝置、快速換模、腳踏開關(A)
- \* Theoretical with 1/2" hose Δ φ 10mm

### YL-80

| 型號 MODEL                       | YL-80        |
|--------------------------------|--------------|
| 最大扣壓管徑 Max Hose Size           | 4"           |
| 扣壓範圍 Crimping Range ( mm )     | φ 4... φ 125 |
| 模具型號 Die Type                  | 32/80        |
| 模具擴張度 Max. Opening ( mm )      | +80          |
| 主要模具長度 Master Die D / L ( mm ) | 140 / 97     |
| 馬達 Motor ( kW )                | 5.5          |
| 電壓 Voltage ( V )               | 220 / 440    |
| 泵浦 Pump ( l / min )            | 48           |
| 扣壓力 Crimping Force ( kN )      | 3200         |
| 扣壓量 ( 每小時 ) * Crimpings Hour * | 2000         |
| 噪音值 Noise level ( dB(A) )      | 71           |
| 保護等級 Protection Class          | IP54         |
| 尺寸 size: length ( mm )         | 980          |
| width ( mm )                   | 1000         |
| height ( mm )                  | 1600         |
| weight ( kg )                  | 1350         |

- With standard dies : 14,16,19,22,26,30,34,39,45, 51,57,63,69,74,78. (YL-80) 84,92,100,108,116
- With standard accessories : Manual Change, Back Stop Device, Quick Change, Foot Pedal (A).
- 隨機標準配件: 手動換模、定尺裝置、快速換模、腳踏開關(A)
- \* Theoretical with 1/2" hose Δ φ 10mm



## INDUSTRIAL CRIMPERS - BIG DIAMETERS

工業大直徑扣壓機



### YL-125

| 型號 MODEL                       | YL-125       |
|--------------------------------|--------------|
| 最大扣壓管徑 Max Hose Size           | 6"           |
| 扣壓範圍 Crimping Range ( mm )     | φ 4... φ 202 |
| 模具型號 Die Type ( mm )           | 32 / 125     |
| 模具擴張度 Max. Opening ( mm )      | +125         |
| 主要模具長度 Master Die D / L ( mm ) | 230 / 116    |
| 馬達 Motor ( kW )                | 5.5          |
| 電壓 Voltage ( V )               | 220 / 440    |
| 泵浦 Pump ( l / min )            | 60           |
| 扣壓力 Crimping Force ( kN )      | 4000         |
| 扣壓量 ( 每小時 ) * Crimpings Hour * | 1800         |
| 噪音值 Noise level ( dB(A) )      | 71           |
| 保護等級 Protection Class          | IP54         |
| 尺寸 size: length ( mm )         | 1050         |
| width ( mm )                   | 1300         |
| height ( mm )                  | 1750         |
| weight ( kg )                  | 3000         |

- With standard dies :14,16,19,22,26,30,34,39,45, 51,57,63,69,74,78 (YL-125) 84,92,100,108,116,126,136,146,156,166,178,190,205
- With standard accessories :Manual Change, Back Stop Device Quick Change, Foot Pedal (A).
- 隨機標準配件: 手動換模、定尺裝置、快速換模、腳踏開關(A)
- \* Theoretical with 1/2" hose Δ φ 10mm

### YL-330

| 型號 MODEL                                | YL-330       |
|---|--------------|
| 最大扣壓管徑 Max Hose Size                    | 12"          |
| 扣壓範圍 Crimping Range ( mm )              | φ 4... φ 335 |
| 模具擴張度 Max. Opening ( mm )               | +155         |
| 模具擴張度 Max. Die 305 Opening ( mm )       | 460          |
| 不含模具擴張度 Without Die Max. Opening ( mm ) | 485          |
| 主要模具長度 Master Die ( D / L )             | 330/220      |
| 馬達 Motor ( kW )                         | 7.5          |
| 電壓 Voltage ( V )                        | 220/440      |
| 泵浦 Pump ( l / min )                     | 120          |
| 扣壓力 Crimping Force ( kN )               | 8300         |
| 扣壓量 ( 每小時 ) * Crimpings Hour *          | 1200         |
| 噪音值 Noise level ( dB(A) )               | 71           |
| 保護等級 Protection Class                   | IP54         |
| 尺寸 size: length ( mm )                  | 1250/1180    |
| width ( mm )                            | 1200/940     |
| height ( mm )                           | 1800/1300    |
| weight ( kg )                           | 4500/500     |

- With standard accessories :Manual Change, Foot Pedal (A).
- 隨機標準配件: 手動換模、腳踏開關(A)
- \* Theoretical with 1/2" hose Δ φ 10mm

YL-125 DIES | φ 84, φ 92, φ 100, φ 108, φ 116, φ 126, φ 136, φ 146, φ 156, φ 166, φ 178, φ 190, φ 205

YL-330 DIES | (YL-330) φ 220, φ 235, φ 250, φ 270, φ 290, φ 305

## SIDE FEED CRIMPERS

側邊扣壓機



### SF-30

| 型號 MODEL                       | SF-30       |
|--------------------------------|-------------|
| 最大扣壓管徑 Max Hose Size           | 1"          |
| 扣壓範圍 Crimping Range ( mm )     | φ 4... φ 45 |
| 模具型號 Die Type                  | 16          |
| 模具擴張度 Max. Opening ( mm )      | +15, +55    |
| 主要模具長度 Master Die D / L ( mm ) | 45 / 60     |
| 馬達 Motor ( kW )                | 3.6         |
| 電壓 Voltage ( V )               | 220 / 440   |
| 泵浦 Pump ( l / min )            | 25          |
| 扣壓力 Crimping Force ( kN )      | 350         |
| 扣壓量 ( 每小時 ) * Crimpings Hour * | 1500        |
| 噪音值 Noise level ( dB(A) )      | 71          |
| 保護等級 Protection Class          | IP54        |
| 尺寸 size: length ( mm )         | 650         |
| width ( mm )                   | 930         |
| height ( mm )                  | 1510        |
| weight ( kg )                  | 640         |

- Customizable mold
- With standard accessories : Back Stop Device, Foot Pedal (B).
- 客訂模具
- 隨機標準配件: 定尺裝置、腳踏開關(B)
- \* Theoretical with 1/2" hose Δ φ 10mm



### SF-60

| 型號 MODEL                       | SF-60       |
|--------------------------------|-------------|
| 最大扣壓管徑 Max Hose Size           | 1 1/4"      |
| 扣壓範圍 Crimping Range ( mm )     | φ 4... φ 87 |
| 模具型號 Die Type                  | SF60        |
| 模具擴張度 Max. Opening ( mm )      | +25, +100   |
| 主要模具長度 Master Die D / L ( mm ) | 99 / 97     |
| 馬達 Motor ( kW )                | 3.6         |
| 電壓 Voltage ( V )               | 220 / 440   |
| 泵浦 Pump ( l / min )            | 37          |
| 扣壓力 Crimping Force ( kN )      | 600         |
| 扣壓量 ( 每小時 ) * Crimpings Hour * | 1200        |
| 噪音值 Noise level ( dB(A) )      | 71          |
| 保護等級 Protection Class          | IP54        |
| 尺寸 size: length ( mm )         | 842         |
| width ( mm )                   | 1105        |
| height ( mm )                  | 1850        |
| weight ( kg )                  | 1540        |

- Customizable mold
- With standard accessories : Manual Change, Back Stop Device, Foot Pedal (A).
- 客訂模具
- 隨機標準配件: 手動換模、定尺裝置、腳踏開關(A)
- \* Theoretical with 1/2" hose Δ φ 10mm

## HANDY CRIMPERS

### 手動扣壓機



### YL-16 HPZ

| 型號 MODEL                       | YL-16 HPZ   |
|--------------------------------|-------------|
| 最大扣壓管徑 Max Hose Size           | 1"          |
| 扣壓範圍 Crimping Range ( mm )     | φ 4... φ 45 |
| 模具型號 Die Type                  | 16          |
| 模具擴張度 Max. Opening ( mm )      | +20         |
| 主要模具長度 Master Die D / L ( mm ) | 45 / 64     |
| 馬達 Motor ( kW )                | HAND PUMP   |
| 扣壓力 Crimping Force ( kN )      | 1200        |
| 尺寸 size: length ( mm )         | 220         |
| width ( mm )                   | 250         |
| height ( mm )                  | 310         |
| weight ( kg )                  | 26          |

• With standard dies : 16,19,23,27,31,37

### YL-16 HP

| 型號 MODEL                       | YL-16 HP    |
|--------------------------------|-------------|
| 最大扣壓管徑 Max Hose Size           | 1"          |
| 扣壓範圍 Crimping Range ( mm )     | φ 4... φ 45 |
| 模具型號 Die Type                  | 16          |
| 模具擴張度 Max. Opening ( mm )      | +20         |
| 主要模具長度 Master Die D / L ( mm ) | 45 / 64     |
| 馬達 Motor ( kW )                | HAND PUMP   |
| 扣壓力 Crimping Force ( kN )      | 1200        |
| 尺寸 size: length ( mm )         | 400         |
| width ( mm )                   | 350         |
| height ( mm )                  | 320         |
| weight ( kg )                  | 43          |

• With standard dies : 16,19,23,27,31,37

### YL-16 AP

| 型號 MODEL                       | YL-16 AP    |
|--------------------------------|-------------|
| 最大扣壓管徑 Max Hose Size           | 1"          |
| 扣壓範圍 Crimping Range ( mm )     | φ 4... φ 45 |
| 模具型號 Die Type                  | 16          |
| 模具擴張度 Max. Opening ( mm )      | +20         |
| 主要模具長度 Master Die D / L ( mm ) | 45 / 64     |
| 馬達 Motor ( kW )                | AIR PUMP    |
| 扣壓力 Crimping Force ( kN )      | 1200        |
| 尺寸 size: length ( mm )         | 400         |
| width ( mm )                   | 350         |
| height ( mm )                  | 320         |
| weight ( kg )                  | 43          |

• With standard dies : 16,19,23,27,31,37

## NUT CRIMPERS

### 螺母扣壓機

### NC-20

| 型號 MODEL                       | NC-20       |
|--------------------------------|-------------|
| 最大扣壓管徑 Max Hose Size           | 11/4"       |
| 扣壓範圍 Crimping Range ( mm )     | φ 4... φ 65 |
| 模具型號 Die Type ( mm )           | NC20        |
| 模具擴張度 Max. Opening ( mm )      | +20         |
| 主要模具長度 Master Die D / L ( mm ) | 99 / 22     |
| 馬達 Motor ( kW )                | 3.6         |
| 電壓 Voltage ( V )               | 220 / 440   |
| 泵浦 Pump ( l / min )            | 11.5        |
| 扣壓力 Crimping Force ( kN )      | 500         |
| 扣壓量 ( 每小時 ) * Crimpings Hour * | 2100        |
| 噪音值 Noise level ( dB(A) )      | 71          |
| 保護等級 Protection Class          | IP54        |
| 尺寸 size: length ( mm )         | 685         |
| width ( mm )                   | 1000        |
| height ( mm )                  | 940         |
| weight ( kg )                  | 340         |

• With standard dies : 12,14,16,19,22,26,30,34,39,45,52,57  
 • With standard accessories : Foot Pedal (B).  
 • 隨機標準配件: 腳踏開關(B)  
 \* Theoretical with 1/2" hose Δ φ 10mm



### NC-30

| 型號 MODEL                       | NC-30       |
|--------------------------------|-------------|
| 最大扣壓管徑 Max Hose Size           | 2"          |
| 扣壓範圍 Crimping Range ( mm )     | φ 4... φ 82 |
| 模具型號 Die Type                  | NC20 / NC30 |
| 模具擴張度 Max. Opening ( mm )      | +26         |
| 主要模具長度 Master Die D / L ( mm ) | 115 / 40    |
| 馬達 Motor ( kW )                | 3.6         |
| 電壓 Voltage ( V )               | 220 / 440   |
| 泵浦 Pump ( l / min )            | 11.5        |
| 扣壓力 Crimping Force ( kN )      | 740         |
| 扣壓量 ( 每小時 ) * Crimpings Hour * | 2000        |
| 噪音值 Noise level ( dB(A) )      | 71          |
| 保護等級 Protection Class          | IP54        |
| 尺寸 size: length ( mm )         | 685         |
| width ( mm )                   | 1000        |
| height ( mm )                  | 940         |
| weight ( kg )                  | 340         |

• With standard dies : 12,14,16,19,22,26,30,34,39,45,52,57  
 (NC-30) 64,69,74  
 • With standard accessories : Foot Pedal (B).  
 • 隨機標準配件: 腳踏開關(B)  
 \* Theoretical with 1/2" hose Δ φ 10mm



## HOSE CUTTER

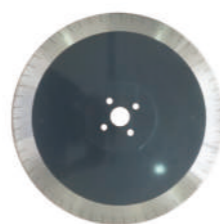
膠管切管機



### CM-50

| 型號 MODEL                    | CM-50     |
|-----------------------------|-----------|
| 切削能力 Capacity               | 2"- 4SH   |
| 刀片外徑 Blade Outside Diameter | φ 350mm   |
| 馬達 Motor ( kW )             | 3         |
| 電壓 Voltage ( V )            | 220 / 440 |
| 轉速 Rotation Speed 50Hz      | 2800 rpm  |
| 轉速 Rotation Speed 60Hz      | 3400 rpm  |
| 尺寸 size: length ( mm )      | 720       |
| width ( mm )                | 480       |
| height ( mm )               | 530       |
| weight ( kg )               | 55        |

- With standard accessories : Blade, Suction Connection.
- 隨機標準配件: 刀片、排煙接口



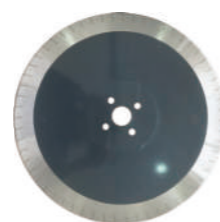
Blade 350mm x 2.5mm x 32mm



### CM-120

| 型號 MODEL                    | CM-120    |
|-----------------------------|-----------|
| 切削能力 Capacity               | 2"- 4SH   |
| 刀片外徑 Blade Outside Diameter | φ 350mm   |
| 氣壓源 Pneumatic Input         | Max 7 kg  |
| 馬達 Motor ( kW )             | 7.5       |
| 電壓 Voltage ( V )            | 220 / 440 |
| 轉速 Rotation Speed 50Hz      | 2800 rpm  |
| 轉速 Rotation Speed 60Hz      | 3400 rpm  |
| 尺寸 size: length ( mm )      | 1000      |
| width ( mm )                | 600       |
| height ( mm )               | 1600      |
| weight ( kg )               | 300       |

- With standard accessories : Blade, Foot Pedal (B), Suction Connection.
- 隨機標準配件: 刀片、腳踏開關(B)、排煙接口



Blade 350mm x 2.5mm x 32mm

## HOSE SKIVER

膠管削皮機



### HSK-16

| 型號 MODEL               | HSK-16  |
|------------------------|---|
| 最大管徑 Max Hose Size     | 2"-4SP  |
| 外部削皮 External Skiving  | 1/4, 3/8, 1/2, 5/8, 3/4, 1", 1-1/4, 1-1/2, 2" |
| 內部削皮 Internal Skiving* | 3/4, 1", 1-1/4, 1-1/2, 2"                     |
| 尺寸 size: length ( mm ) | 450   |
| width ( mm )           | 245   |
| height ( mm )          | 260   |
| weight ( kg )          | 12  |

- \* 另選購 Optional



### SK-16

| 型號 MODEL               | SK-16   |
|------------------------|---|
| 最大管徑 Max Hose Size     | 2"-4SP  |
| 外部削皮 External Skiving  | 1/4, 3/8, 1/2, 5/8, 3/4, 1", 1-1/4, 1-1/2, 2" |
| 內部削皮 Internal Skiving* | 3/4, 1", 1-1/4, 1-1/2, 2"                     |
| 馬達 Motor ( kW )        | 0.4   |
| 電壓 Voltage ( V )       | 220 / 380                                     |
| 轉速 Rotation Speed      | 233 / 284                                     |
| 尺寸 size: length ( mm ) | 500   |
| width ( mm )           | 660   |
| height ( mm )          | 650   |
| weight ( kg )          | 110   |

- With standard accessories : Foot Pedal (B).
- 隨機標準配件: 腳踏開關(B)
- \* 另選購 Optional

## HOSE TEST BENCH

膠管爆破機

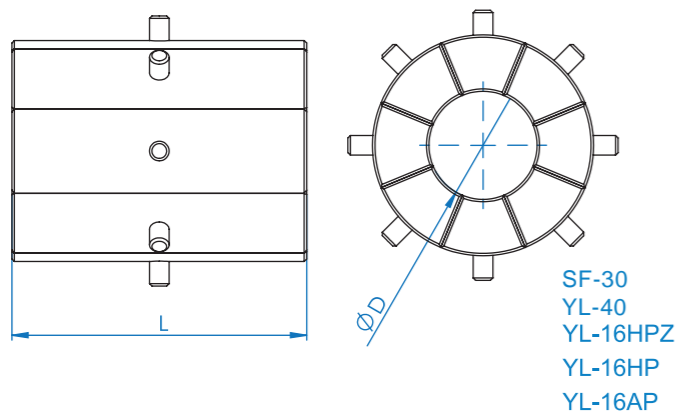


### BT-2100

| 型號 MODEL                               | BT-2100                           |
|--|-----------------------------------|
| 爆破能力 Capacity                          | 2100 kg / 2058 bar                |
| 最大氣壓 Maximum Air Pressure              | 7 kg / 6 bar                      |
| 最大輸出壓力 Maximum Outlet Pressure         | 2100 kg / 2058 bar                |
| 最大工作壓力 Max Working Pressure            | 2100 kg / 2058 bar                |
| 儀表壓力 Gauge Pressure                    | 3060 kg / 3000 bar                |
| 輸入氣源 Air Inlet                         | 1/2 PT Fittings                   |
| 高壓輸出介面孔 High Pressure Outlet Interface | 4 Interfaces for 1/4 F (Fittings) |
| 水容量 Reservoir Capacity                 | 48 liter                          |
| 尺寸 size: length ( mm )                 | 1800                              |
| width ( mm )                           | 1200                              |
| height ( mm )                          | 700                               |
| weight ( kg )                          | 300                               |

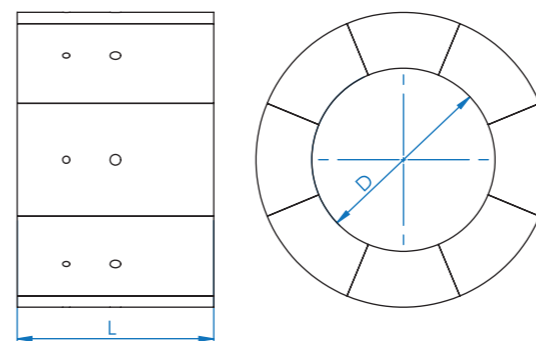
# Die Type

## 規格表



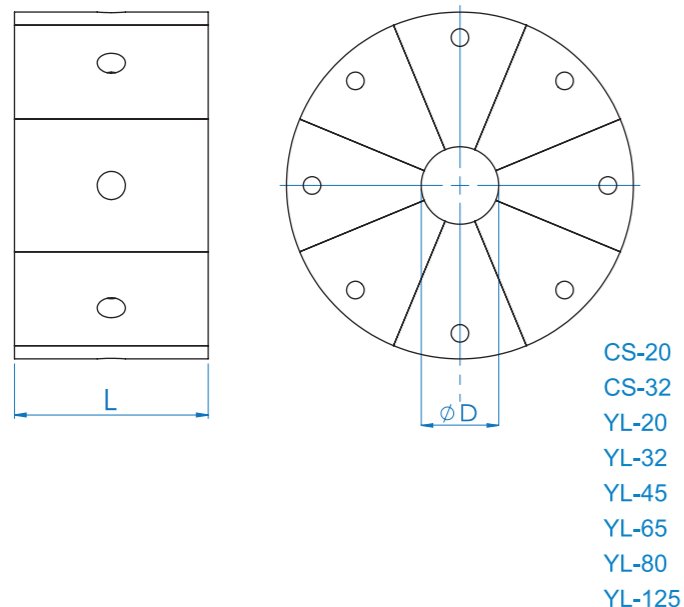
### YL-16 HPPZ / YL-16 HP / YL-16 AP / SF-30 / YL-40

| Code | Crimping Range | D  | L  |
|------|----------------|----|----|
| 16   | 7~10           | 7  | 60 |
| 16   | 10~12          | 10 | 60 |
| 16   | 12~14          | 12 | 60 |
| 16   | 14~16          | 14 | 60 |
| 16   | 16~19          | 16 | 60 |
| 16   | 19~23          | 19 | 60 |
| 16   | 23~27          | 23 | 60 |
| 16   | 27~31          | 27 | 60 |
| 16   | 31~37          | 31 | 60 |
| 16   | 37~45          | 37 | 60 |



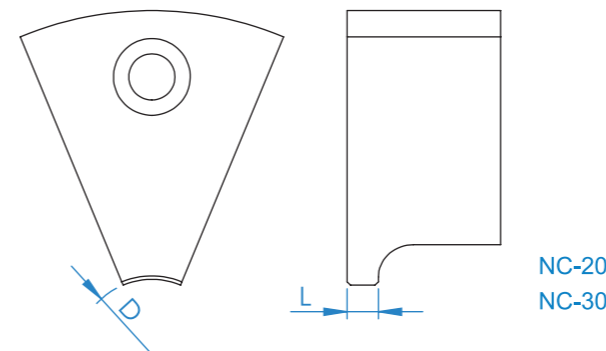
### YL-330

| Code | Crimping Range | D   | L   |
|------|----------------|-----|-----|
| 330  | 220~235        | 220 | 220 |
| 330  | 235~250        | 235 | 220 |
| 330  | 250~270        | 250 | 220 |
| 330  | 270~290        | 270 | 220 |
| 330  | 290~305        | 290 | 220 |
| 330  | 305~320        | 305 | 220 |



### YL-32

| Code | Crimping Range | D  | L   |
|------|----------------|----|-----|
| 32   | 10~12          | 10 | 55  |
| 32   | 12~14          | 12 | 55  |
| 32   | 14~16          | 14 | 55  |
| 32   | 16~19          | 16 | 55  |
| 32   | 19~22          | 19 | 55  |
| 32   | 22~26          | 22 | 70  |
| 32   | 26~30          | 26 | 70  |
| 32   | 30~34          | 30 | 70  |
| 32   | 34~39          | 34 | 75  |
| 32   | 39~45          | 39 | 75  |
| 32   | 45~51          | 45 | 90  |
| 32   | 51~57          | 51 | 90  |
| 32   | 57~63          | 57 | 100 |
| 32   | 63~69          | 63 | 110 |
| 32   | 69~74          | 69 | 110 |
| 32   | 74~78          | 74 | 110 |
| 32   | 78~87          | 78 | 110 |



### NC-20

| Code | Crimping Range | D  | L   |
|------|----------------|----|-----|
| NC20 | 12~14          | 12 | 3   |
| NC20 | 14~16          | 14 | 3   |
| NC20 | 16~19          | 16 | 4   |
| NC20 | 19~22          | 19 | 4   |
| NC20 | 22~26          | 22 | 4.5 |
| NC20 | 26~30          | 26 | 4.5 |
| NC20 | 30~34          | 30 | 5   |
| NC20 | 34~39          | 34 | 5   |
| NC20 | 39~45          | 39 | 5   |
| NC20 | 45~52          | 45 | 5   |
| NC20 | 52~57          | 52 | 5   |
| NC20 | 57~66          | 57 | 5   |

### NC-30

| Code | Crimping Range | D  | L |
|------|----------------|----|---|
| NC30 | 64~69          | 64 | 5 |
| NC30 | 69~74          | 69 | 5 |
| NC30 | 74~78          | 74 | 5 |

### YL-125

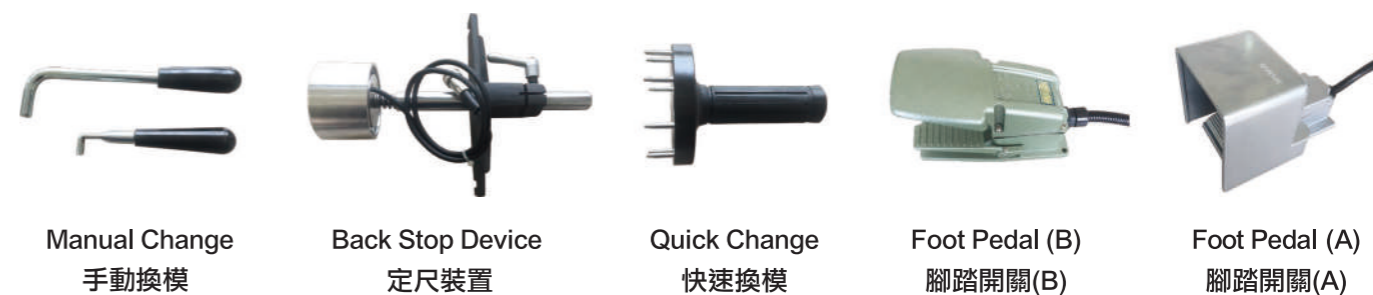
| Code | Crimping Range | D   | L   |
|------|----------------|-----|-----|
| 125  | 84~92          | 84  | 120 |
| 125  | 92~100         | 92  | 120 |
| 125  | 100~108        | 100 | 120 |
| 125  | 108~116        | 108 | 120 |
| 125  | 116~126        | 116 | 120 |
| 125  | 126~136        | 126 | 120 |
| 125  | 136~146        | 136 | 120 |
| 125  | 146~156        | 146 | 120 |
| 125  | 156~166        | 156 | 120 |
| 125  | 166~178        | 166 | 120 |
| 125  | 178~190        | 178 | 120 |
| 125  | 190~205        | 190 | 120 |
| 125  | 205~220        | 205 | 120 |

### YL-80

| Code | Crimping Range | D   | L   |
|------|----------------|-----|-----|
| 80   | 84~92          | 84  | 120 |
| 80   | 92~100         | 92  | 120 |
| 80   | 100~108        | 100 | 120 |
| 80   | 108~116        | 108 | 120 |
| 80   | 116~124        | 116 | 120 |

## Crimper Accessory

### 配件



Manual Change  
手動換模

Back Stop Device  
定尺裝置

Quick Change  
快速換模

Foot Pedal (B)  
腳踏開關(B)

Foot Pedal (A)  
腳踏開關(A)