

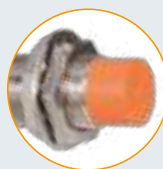
CJY 圆柱形接近开关

Proximity Sensor Cylindrical Type



特点 Features

- 橙色标识代表标准型产品
- 浅绿色标识代表高端型产品
- Orange mark for standard type
- Light green mark for high-end type
- 内置浪涌保护，电源反接保护电路
- 寿命长，高可靠性，操作简单，经济实惠
- 红色 LED 状态指示灯，易于识别运行状态
- IP67 防护等级 (IEC 规格)
- 可以代替微动开关或限位开关广泛使用
- 采用专用 IC 提高抗干扰能力
- Inside surge protection, reverse polarity protection
- Long use-life cycle and high reliability, easy install, economic price
- Red LED status indication, easy to confirm work situation
- Protection structure IP67(IEC standard)
- Replaceable for limit switches
- Exclusively designed IC for improving anti-jamming capability

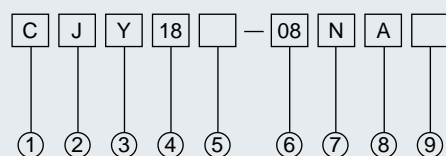


■ 橙色标准型
Orange



■ 浅绿色高端型
Light green

型号说明 Model Number Structure



项目 Item	代号 Code	说明 Description
① 公司代号 Company code	C	公司代号 Company code
② 产品名称 Product name	J	电感式接近开关 Inductive proximity sensor
③ 外壳形状 Shape of shell	Y	圆柱形 Cylinder-shaped
④ 尺寸代码 Dimension code	18	18=M18
⑤ 产品类型 Product type	无 Without	无 Without = 高端型 High-end type (浅绿色头部 Light green head)
	E	E = 标准型 Standard type (橙色头部 Orange head)
⑥ 检测距离 Detection distance	08	08=8mm
⑦ 输出方式 Output mode	K	AC 二线 AC 2wires
	L	DC 二线 DC 2wires
	P	PNP 三线 PNP 3wires
	N	NPN 三线 NPN 3wires
⑧ 输出状态 Output state	A	常开 NO
	B	常闭 NC
	C	常开 + 常闭 NO+NC
⑨ 连接形式 Connection	无 Without	引线式 Without: Lead wire
	T	接插式 Plug-in
	R	配线引出接插式 Wiring leads Plug-in

CJY 圆柱形接近开关
Proximity Sensor Cylindrical Type

规格 Specifications

直流 3 线式 DC 3-wire type

型号名 Model	高端型 High-end type	CJY04-01NA CJY04-01NB CJY04-01PA CJY04-01PB	CJY05-01NA CJY05-01NB CJY05-01PA CJY05-01PB	CJY06-01NA CJY06-01NB CJY06-01PA CJY06-01PB	CJY6.5-1.5NA CJY6.5-1.5NB CJY6.5-1.5PA CJY6.5-1.5PB
	标准型 Standard type	/	/	/	/
检测距离 Sensing distance		1mm	1mm	1mm	1.5mm
应差距离 Hysteresis	检测距离的 10% 以下 Max. 10% of sensing distance				
标准检测物 Standard sensing target		6×6×1mm (铁 Iron)	7×7×1mm (铁 Iron)	8×8×1mm (铁 Iron)	8×8×1.5mm (铁 Iron)
设定距离 Setting distance		0~0.8mm	0~0.8mm	0~1.0mm	0~6.5mm
电源 (使用电压范围) Power supply (Operating voltage)	12-24VDC (10-30VDC)				
漏电流 Leakage current	10mA 以下 Max.10mA				
应答频率 (*1) Response frequency (*1)		1500Hz	1500Hz	1000Hz	1000Hz
残留电压 (*2) Residual voltage (*2)	1.0V 以下 Max. 1.0V				
温度的影响 Affection by Temp.	在 -25~+70℃ 温度范围内 +20℃ 时的检测距离的 ±10% 以内 Max. ±10% for sensing distance at ambient temperature 20℃				
控制输出 Control output	200mA 以下 Max. 200mA				
绝缘阻抗 Insulation resistance	50MΩ 以上 (500VDC 为基准) Min. 50MΩ (at 500VDC megger)				
耐电压 Dielectric strength	1500VAC 50/60Hz1 分钟 1500VAC 50/60Hz for 1minute				
耐振动 Vibration	10~55Hz(周期 1 分钟) 振幅 1mm X, Y, Z 各方向 2 小时 1mm amplitude at frequency of 10 to 55Hz(for 1 min.) in each of X, Y, Z directions for 2 hours				
耐冲击 Shock	500m/s ² (50G) X, Y, Z 各方向 3 次 500m/s ² (approx. 50G) X, Y, Z directions for 3 times				
显示灯 Indicator	动作指示灯 (红色 LED) Operation indicator(red LED)				
使用周围温度 Ambient temperature	-25~+70℃ (未结冰状态 No icing)				
储存温度 Storage temperature	-30~+80℃ (未结冰状态 No icing)				
使用周围湿度 Ambient humidity	35~95%RH (未结露状态 No condensation)				
保护电路 Protection circuit	内置浪涌保护, 电源反接保护, 过流保护电路 Surge protection circuit, Reverse polarity protection circuit, Overcurrent protection circuit				
材质 Material	外壳 / 螺母: 镀镍黄铜, 垫片: 镍镀铁, 检测面: PBT, 一般线缆 (灰色): 聚氯乙烯 (PVC), 耐油性线缆 (黑色): 聚氯乙烯 (耐油强化型 PVC) Case/Nut: Nickel plated Brass, Washer: Nickel plated Iron, Sensing surface: PBT, Standard cable (Grey): Polyvinyl chloride (PVC), Oil resistant cable (Black): Oil resistant Polyvinyl chloride (PVC)				
连接线缆 Cable	φ 2.8, 3P, 2m				
	AWG22, 芯线直径: 0.1mm, 芯线数: 22, 绝缘皮外径: φ 1.25mm AWG22, Core diameter: 0.1mm, Number of cores: 22, Insulator diameter: φ 1.25				
防护等级 Protection	IP67				

(※1) 开关动作的应答频率为平均值。测定条件使用标准检测物, 检测物的间距为标准检测物的 2 倍, 设定距离为检测距离的 1/2。

(※1): The response frequency is the average value. The standard sensing target is used and the width is set as 2 times of the standard sensing target, 1/2 of the sensing distance for the distance.

CJY 圆柱形接近开关
 Proximity Sensor Cylindrical Type

规格 Specifications

直流 3 线式 DC 3-wire type

型号名 Model	高端型 High-end type	CJY08-01NA CJY08-01NB CJY08-01PA CJY08-01PB	CJY08-02NA CJY08-02NB CJY08-02PA CJY08-02PB	CJY12-02NA CJY12-02NB CJY12-02NC CJY12-02PA CJY12-02PB CJY12-02PC	CJY12-04NA CJY12-04NB CJY12-04NC CJY12-04PA CJY12-04PB CJY12-04PC	CJY18-05NA CJY18-05NB CJY18-05NC CJY18-05PA CJY18-05PB CJY18-05PC	CJY18-08NA CJY18-08NB CJY18-08NC CJY18-08PA CJY18-08PB CJY18-08PC	CJY30-10NA CJY30-10NB CJY30-10NC CJY30-10PA CJY30-10PB CJY30-10PC	CJY30-15NA CJY30-15NB CJY30-15NC CJY30-15PA CJY30-15PB CJY30-15PC								
	标准型 Standard type	CJY08E-01NA CJY08E-01NB CJY08E-01PA CJY08E-01PB	CJY08E-02NA CJY08E-02NB CJY08E-02PA CJY08E-02PB	CJY12E-02NA CJY12E-02NB CJY12E-02NC CJY12E-02PA CJY12E-02PB CJY12E-02PC	CJY12E-04NA CJY12E-04NB CJY12E-04NC CJY12E-04PA CJY12E-04PB CJY12E-04PC	CJY18E-05NA CJY18E-05NB CJY18E-05NC CJY18E-05PA CJY18E-05PB CJY18E-05PC	CJY18E-08NA CJY18E-08NB CJY18E-08NC CJY18E-08PA CJY18E-08PB CJY18E-08PC	CJY30E-10NA CJY30E-10NB CJY30E-10NC CJY30E-10PA CJY30E-10PB CJY30E-10PC	CJY30E-15NA CJY30E-15NB CJY30E-15NC CJY30E-15PA CJY30E-15PB CJY30E-15PC								
检测距离 Sensing distance	1mm		2mm		2mm		4mm		5mm		8mm		10mm		15mm		
应差距离 Hysteresis	检测距离的 10% 以下 Max. 10% of sensing distance																
标准检测物 Standard sensing target	8 × 8 × 1mm (铁 Iron)				12 × 12 × 1mm (铁 Iron)				18 × 18 × 1mm (铁 Iron)		25 × 25 × 1mm (铁 Iron)		30 × 30 × 1mm (铁 Iron)		45 × 45 × 1mm (铁 Iron)		
设定距离 Setting distance	0~0.8mm		0~1.4mm		0~1.4mm		0~2.8mm		0~3.5mm		0~5.6mm		0~7mm		0~10.5mm		
电源 (使用电压范围) Power supply (Operating voltage)	12-24VDC (10-30VDC)																
漏电流 Leakage current	10mA 以下 Max.10mA																
应答频率 (※1) Response frequency (※1)	1000Hz		1000Hz		1000Hz		500Hz				350Hz		400Hz(高端) 350Hz(标准)		200Hz		
残留电压 Residual voltage	1.0V 以下 Max. 1.0V																
温度的影响 Affection by Temp.	在 -25~+70℃ 温度范围内 +20℃ 时的检测距离的 ± 10% 以内 Max. ± 10% for sensing distance at ambient temperature 20℃																
控制输出 Control output	200mA 以下 Max. 200mA																
绝缘阻抗 Insulation resistance	50MΩ 以上 (500VDC 为基准) Min. 50MΩ (at 500VDC megger)																
耐电压 Dielectric strength	1500VAC 50/60Hz1 分钟 1500VAC 50/60Hz for 1minute																
耐振动 Vibration	10~55Hz(周期 1 分钟) 振幅 1mm X, Y, Z 各方向 2 小时 1mm amplitude at frequency of 10 to 55Hz(for 1 min.) in each of X, Y, Z directions for 2 hours																
耐冲击 Shock	500m/s ² (50G) X, Y, Z 各方向 3 次 500m/s ² (approx. 50G) X, Y, Z directions for 3 times																
显示灯 Indicator	动作指示灯 (红色 LED) Operation indicator(red LED)																
使用周围温度 Ambient temperature	-25~+70℃ (未结冰状态 No icing)																
储存温度 Storage temperature	-30~+80℃ (未结冰状态 No icing)																
使用周围湿度 Ambient humidity	35~95%RH (未结露状态 No condensation)																
保护电路 Protection circuit	内置浪涌保护, 电源反接保护, 过流保护电路 Surge protection circuit, Reverse polarity protection circuit, Overcurrent protection circuit																
材质 Material	外壳 / 螺母: 镀镍黄铜, 垫片: 镍镀铁, 检测面: PBT, 一般线缆 (灰色): 聚氯乙烯 (PVC), 耐油性线缆 (黑色): 聚氯乙烯 (耐油强化型 PVC) Case/Nut: Nickel plated Brass, Washer: Nickel plated Iron, Sensing surface: PBT, Standard cable(Grey): Polyvinyl chloride(PVC), Oil resistant cable(Black): Oil resistant Polyvinyl chloride(PVC)																
连接线缆 Cable	高端型 High-end type	φ 2.8, 3P, 2m (AWG22, 芯线直径 :0.1mm, 芯线数 :22, 绝缘皮外径 : φ 1.25mm) (AWG22, Core diameter: 0.1mm, Number of cores: 22, Insulator diameter: φ 1.25)				φ 3.8, 3P,4P 2m (AWG22, 芯线直径 :0.1mm, 芯线数 :25, 绝缘皮外径 : φ 1.25mm) (AWG22, Core diameter: 0.1mm, Number of cores: 25, Insulator diameter: φ 1.25)				φ 4.8, 3P,4P 2m (AWG22, 芯线直径 :0.1mm, 芯线数 :30, 绝缘皮外径 : φ 1.25mm) (AWG22, Core diameter: 0.1mm, Number of cores: 30, Insulator diameter: φ 1.25)							
	标准型 Standard type	φ 2.8, 3P, 1.5m (AWG22, 芯线直径 :0.1mm, 芯线数 :22, 绝缘皮外径 : φ 1.25mm) (AWG22, Core diameter: 0.1mm, Number of cores: 22, Insulator diameter: φ 1.25)				φ 3.8, 3P, 4P 1.5m (AWG22, 芯线直径 :0.1mm, 芯线数 :25, 绝缘皮外径 : φ 1.25mm) (AWG22, Core diameter: 0.1mm, Number of cores: 25, Insulator diameter: φ 1.25)				φ 4.8, 3P, 4P 1.5m (AWG22, 芯线直径 :0.1mm, 芯线数 :30, 绝缘皮外径 : φ 1.25mm) (AWG22, Core diameter: 0.1mm, Number of cores: 30, Insulator diameter: φ 1.25)							
防护等级 Protection	IP67																

(※1) 开关动作的应答频率为平均值。测定条件使用标准检测物, 检测物的间距为标准检测物的 2 倍, 设定距离为检测距离的 1/2。

(※1): The response frequency is the average value. The standard sensing target is used and the width is set as 2 times of the standard sensing target, 1/2 of the sensing distance for the distance.

CJY 圆柱形接近开关

Proximity Sensor Cylindrical Type

规格 Specifications

直流 2 线式 DC 2-wire type

型号名 Model	高端型 High-end type	CJY08-01LA CJY08-01LB	CJY08-02LA CJY08-02LB	CJY12-02LA CJY12-02LB	CJY12-04LA CJY12-04LB	CJY18-05LA CJY18-05LB	CJY18-08LA CJY18-08LB	CJY30-10LA CJY30-10LB	CJY30-15LA CJY30-15LB
标准型 Standard type	CJY08E-01LA CJY08E-01LB	CJY08E-02LA CJY08E-02LB	CJY12E-02LA CJY12E-02LB	CJY12E-04LA CJY12E-04LB	CJY18E-05LA CJY18E-05LB	CJY18E-08LA CJY18E-08LB	CJY30E-10LA CJY30E-10LB	CJY30E-15LA CJY30E-15LB	
检测距离 Sensing distance	1mm	2mm	2mm	4mm	5mm	8mm	10mm	15mm	
应差距离 Hysteresis	检测距离的 10% 以下 Max. 10% of sensing distance								
标准检测物 Standard sensing target	8 × 8 × 1mm (铁 Iron)		12 × 12 × 1mm (铁 Iron)		18 × 18 × 1mm (铁 Iron)	25 × 25 × 1mm (铁 Iron)	30 × 30 × 1mm (铁 Iron)	45 × 45 × 1mm (铁 Iron)	
设定距离 Setting distance	0~0.8mm	0~1.4mm	0~1.4mm	0~2.8mm	0~3.5mm	0~5.6mm	0~7mm	0~10.5mm	
电源 (使用电压范围) Power supply (Operating voltage)	12-24VDC (10-30VDC)								
漏电流 Leakage current	0.6mA 以下 Max.0.6mA								
应答频率 (※1) Response frequency (※1)	1000Hz	1000Hz	1000Hz	500Hz		350Hz	350Hz	200Hz	
残留电压 Residual voltage	3.5V 以下 Max. 3.5V								
温度的影响 Affection by Temp.	在 -25~+70℃ 温度范围内 +20℃ 时的检测距离的 ± 10% 以内 Max. ± 10% for sensing distance at ambient temperature 20℃								
控制输出 Control output	200mA 以下 Max. 200mA								
绝缘阻抗 Insulation resistance	50MΩ 以上 (500VDC 为基准) Min. 50MΩ (at 500VDC megger)								
耐电压 Dielectric strength	1500VAC 50/60Hz1 分钟 1500VAC 50/60Hz for 1minute								
耐振动 Vibration	10~55Hz(周期 1 分钟) 振幅 1mm X, Y, Z 各方向 2 小时 1mm amplitude at frequency of 10 to 55Hz(for 1 min.) in each of X, Y, Z directions for 2 hours								
耐冲击 Shock	500m/s ² (50G) X, Y, Z 各方向 3 次 500m/s ² (approx. 50G) X, Y, Z directions for 3 times								
显示灯 Indicator	动作指示灯 (红色 LED) Operation indicator(red LED)								
使用周围温度 Ambient temperature	-25~+70℃ (未结冰状态 No icing)								
储存温度 Storage temperature	-30~+80℃ (未结冰状态 No icing)								
使用周围湿度 Ambient humidity	35~95%RH (未结露状态 No condensation)								
保护电路 Protection circuit	浪涌保护电路 Surge protection circuit								
材质 Material	外壳 / 螺母: 镀镍黄铜, 垫片: 镍镀铁, 检测面: PBT, 一般线缆 (灰色): 聚氯乙烯 (PVC), 耐油性线缆 (黑色): 聚氯乙烯 (耐油强化型 PVC) Case/Nut: Nickel plated Brass, Washer: Nickel plated Iron, Sensing surface: PBT, Standard cable(Gray): Polyvinyl chloride(PVC), Oil resistant cable(Black): Oil resistant Polyvinyl chloride(PVC)								
连接线缆 Cable	高端型 High-end type	φ 2.8, 2P, 2m		φ 3.8, 2P, 2m		φ 4.8, 2P, 2m			
		(AWG22, 芯线直径 :0.1mm, 芯线数 :22, 绝缘皮外径 : φ 1.25mm) (AWG22, Core diameter: 0.1mm, Number of cores: 22, Insulator diameter: φ 1.25)	(AWG22, 芯线直径 :0.1mm, 芯线数 :25, 绝缘皮外径 : φ 1.25mm) (AWG22, Core diameter: 0.1mm, Number of cores: 25, Insulator diameter: φ 1.25)		(AWG22, 芯线直径 :0.1mm, 芯线数 :30, 绝缘皮外径 : φ 1.25mm) (AWG22, Core diameter: 0.1mm, Number of cores: 30, Insulator diameter: φ 1.25)				
	标准型 Standard type	φ 2.8, 2P, 1.5m		φ 3.8, 2P, 1.5m		φ 4.8, 2P, 1.5m			
		(AWG22, 芯线直径 :0.1mm, 芯线数 :22, 绝缘皮外径 : φ 1.25mm) (AWG22, Core diameter: 0.1mm, Number of cores: 22, Insulator diameter: φ 1.25)	(AWG22, 芯线直径 :0.1mm, 芯线数 :25, 绝缘皮外径 : φ 1.25mm) (AWG22, Core diameter: 0.1mm, Number of cores: 25, Insulator diameter: φ 1.25)		(AWG22, 芯线直径 :0.1mm, 芯线数 :30, 绝缘皮外径 : φ 1.25mm) (AWG22, Core diameter: 0.1mm, Number of cores: 30, Insulator diameter: φ 1.25)				
防护等级 Protection	IP67								

(※1) 开关动作的应答频率为平均值。测定条件使用标准检测物, 检测物的间距为标准检测物的 2 倍, 设定距离为检测距离的 1/2。

(※1): The response frequency is the average value. The standard sensing target is used and the width is set as 2 times of the standard sensing target, 1/2 of the sensing distance for the distance.

CJY 圆柱形接近开关

Proximity Sensor Cylindrical Type

规格 Specifications

交流 2 线式 AC 2-wire type

型号名 Model	高端型 High-end type	/	CJY12-04KA CJY12-04KB	CJY18-05KA CJY18-05KB	CJY18-08KA CJY18-08KB	CJY30-10KA CJY30-10KB	CJY30-15KA CJY30-15KB
标准型 Standard type	CJY12E-02KA CJY12E-02KB	CJY12E-04KA CJY12E-04KB	CJY18E-05KA CJY18E-05KB	CJY18E-08KA CJY18E-08KB	CJY30E-10KA CJY30E-10KB	CJY30E-15KA CJY30E-15KB	
检测距离 Sensing distance	2mm	4mm	5mm	8mm	10mm	15mm	
应差距离 Hysteresis	检测距离的 10% 以下 Max. 10% of sensing distance						
标准检测物 Standard sensing target	12 × 12 × 1mm (铁 Iron)		18 × 18 × 1mm (铁 Iron)	25 × 25 × 1mm (铁 Iron)	30 × 30 × 1mm (铁 Iron)	45 × 45 × 1mm (铁 Iron)	
设定距离 Setting distance	0~1.4mm	0~2.8mm	0~3.5mm	0~5.6mm	0~7mm	0~10.5mm	
电源 (使用电压范围) Power supply (Operating voltage)	24-250VAC(高端型) 90-250VAC (标准型)						
漏电流 Leakage current	10mA 以下 Max.10mA						
应答频率 (*1) Response frequency (*1)	20Hz						
残留电压 Residual voltage	10V 以下 Max. 10V						
温度的影响 Affection by Temp.	在 -25~+70℃ 温度范围内 +20℃ 时的检测距离的 ± 10% 以内 Max. ± 10% for sensing distance at ambient temperature 20℃						
控制输出 Control output	200mA 以下 Max. 200mA						
绝缘阻抗 Insulation resistance	50MΩ 以上 (500VDC 为基准) Min. 50MΩ (at 500VDC megger)						
耐电压 Dielectric strength	1500VAC 50/60Hz1 分钟 1500VAC 50/60Hz for 1minute						
耐振动 Vibration	10~55Hz(周期 1 分钟) 振幅 1mm X, Y, Z 各方向 2 小时 1mm amplitude at frequency of 10 to 55Hz(for 1 min.) in each of X, Y, Z directions for 2 hours						
耐冲击 Shock	500m/s ² (50G) X, Y, Z 各方向 3 次 500m/s ² (approx. 50G) X, Y, Z directions for 3 times						
显示灯 Indicator	动作指示灯 (红色 LED) Operation indicator(red LED)						
使用周围温度 Ambient temperature	-25~+70℃ (未结冰状态 No icing)						
储存温度 Storage temperature	-30~+80℃ (未结冰状态 No icing)						
使用周围湿度 Ambient humidity	35~95%RH (未结露状态 No condensation)						
保护电路 Protection circuit	浪涌保护 Surge protection current						
材质 Material	外壳 / 螺母: 镀镍黄铜, 垫片: 镍镀铁, 检测面: PBT, 一般线缆 (灰色): 聚氯乙烯 (PVC), 耐油性线缆 (黑色): 聚氯乙烯 (耐油强化型 PVC) Case/Nut: Nickel plated Brass, Washer: Nickel plated Iron, Sensing surface: PBT, Standard cable(Gray): Polyvinyl chloride(PVC), Oil resistant cable(Black): Oil resistant Polyvinyl chloride(PVC)						
连接线缆 Cable	高端型 High-end type	φ 3.8, 2P, 2m		φ 4.8, 2P, 2m			
		(AWG22, 芯线直径:0.1mm, 芯线数:25, 绝缘皮外径: φ 1.25mm) (AWG22, Core diameter: 0.1mm, Number of cores: 25, Insulator diameter: φ 1.25)		(AWG22, 芯线直径:0.1mm, 芯线数:30, 绝缘皮外径: φ 1.25mm) (AWG22, Core diameter: 0.1mm, Number of cores: 30, Insulator diameter: φ 1.25)			
	标准型 Standard type	φ 3.8, 2P, 1.5m		φ 4.8, 2P, 1.5m			
		(AWG22, 芯线直径:0.1mm, 芯线数:25, 绝缘皮外径: φ 1.25mm) (AWG22, Core diameter: 0.1mm, Number of cores: 25, Insulator diameter: φ 1.25)		(AWG22, 芯线直径:0.1mm, 芯线数:30, 绝缘皮外径: φ 1.25mm) (AWG22, Core diameter: 0.1mm, Number of cores: 30, Insulator diameter: φ 1.25)			
防护等级 Protection	IP67						

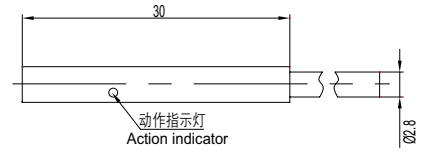
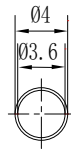
(*1) 开关动作的应答频率为平均值。测定条件使用标准检测物, 检测物的间距为标准检测物的 2 倍, 设定距离为检测距离的 1/2。

(*1): The response frequency is the average value. The standard sensing target is used and the width is set as 2 times of the standard sensing target, 1/2 of the sensing distance for the distance.

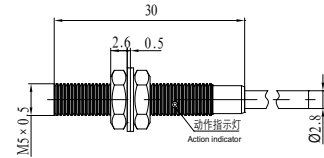
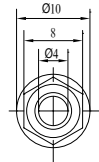
CJY 圆柱形接近开关 (高端型)
 Proximity Sensor Cylindrical Type (High-end type)

外观和尺寸 Appearance and Dimension

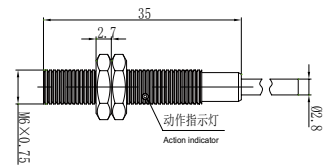
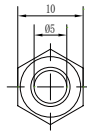
CJY04-01



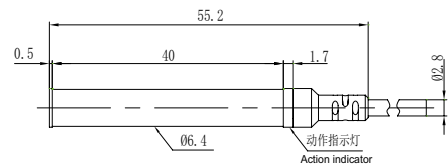
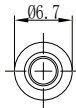
CJY05-01



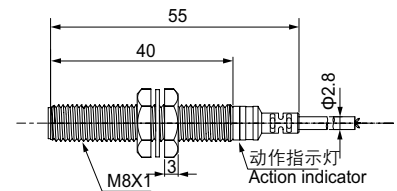
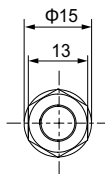
CJY06-01



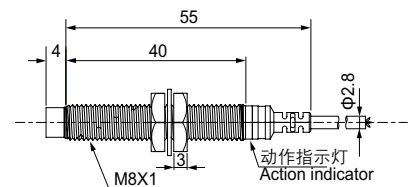
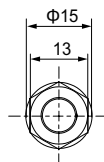
CJY6.5-1.5



CJY08-01



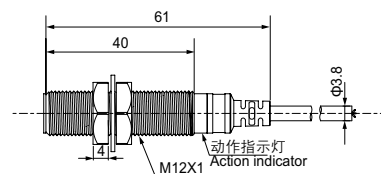
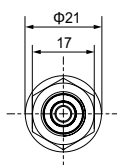
CJY08-02



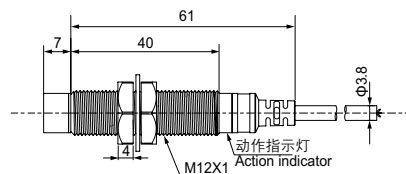
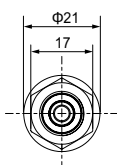
CJY 圆柱形接近开关 (高端型)
 Proximity Sensor Cylindrical Type (High-end type)

外观和尺寸 Appearance and Dimension

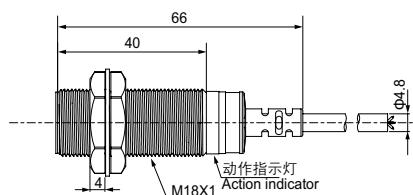
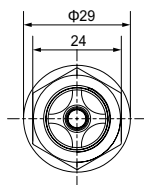
CJY12-02



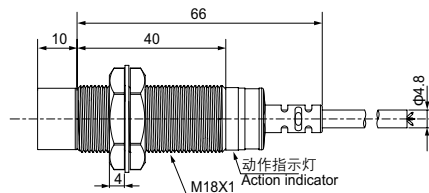
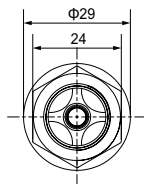
CJY12-04



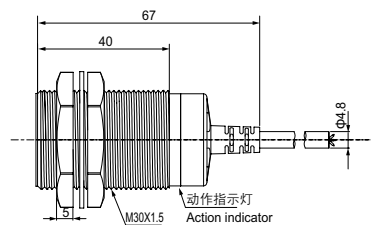
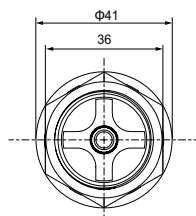
CJY18-05



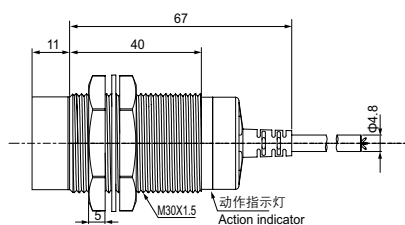
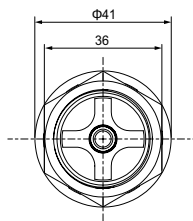
CJY18-08



CJY30-10



CJY30-15



CJY 圆柱形接近开关 (标准型)
 Proximity Sensor Cylindrical Type (Standard type)

外观和尺寸 Appearance and Dimension

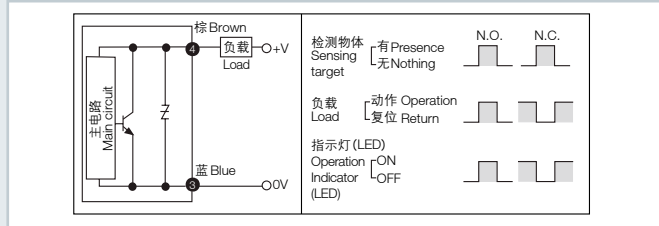
CJY08E-01			
CJY08E-02			
CJY12E-02			
CJY12E-04			
CJY18E-05			
CJY18E-08			
CJY30E-10			
CJY30E-15			

CJY 圆柱形接近开关

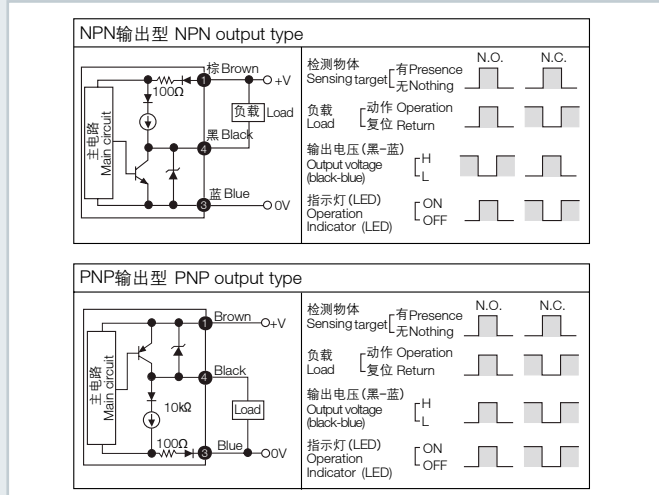
Proximity Sensor Cylindrical Type

输出电路 Control Output Diagram

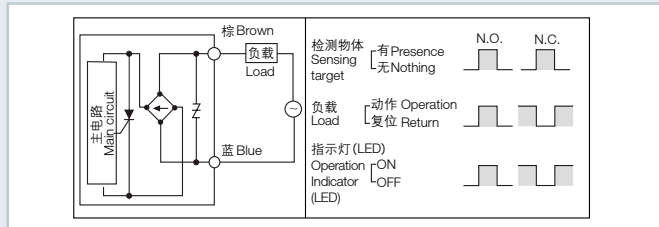
直流 2 线式 DC 2-wire type



直流 3 线式 DC 3-wire type



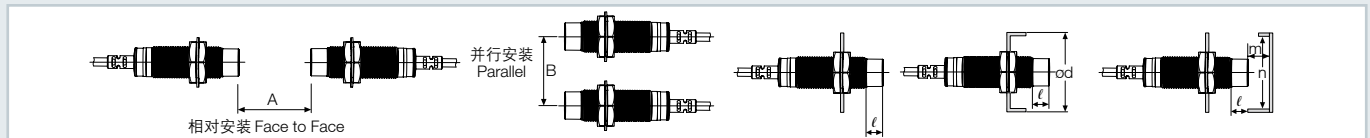
交流 2 线式 AC 2-wire type



正确使用 Proper Usage

相互干扰 Mutual-interference

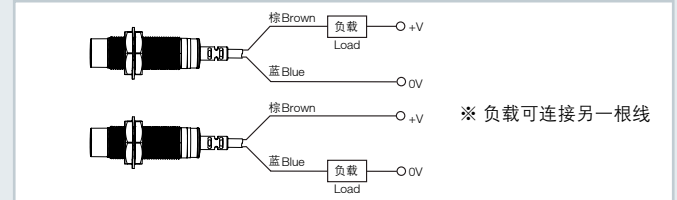
当把两个以上的接近开关一起安装使用时，可能会发生相互干扰引起的误动作，在安装时请务必满足下表中所规定的尺寸要求进行安装。
 When several proximity sensors are mounted close to one another a malfunction of the sensor may be caused due to mutual interference. Therefore, be sure to provide a minimum distance between the two sensors as below chart indicates.



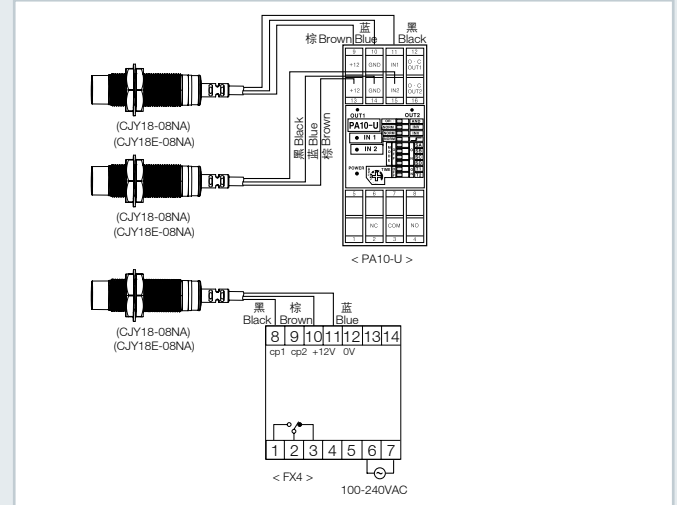
型号名 Model	CJY08-01 CJY08E-01	CJY08-02 CJY08E-02	CJY12-02 CJY12E-02	CJY12-04 CJY12E-04	CJY18-05 CJY18E-05	CJY18-08 CJY18E-08	CJY30-10 CJY30E-10	CJY30-15 CJY30E-15
项目 Item								
A	9	12	12	24	30	48	60	90
B	16	24	24	36	36	54	60	90
l	0	8	0	11	0	14	0	15
φ d	8	24	12	36	18	54	30	90
m	4.5	6	6	12	15	24	30	45
n	12	24	18	36	27	54	45	90

连接 Connections

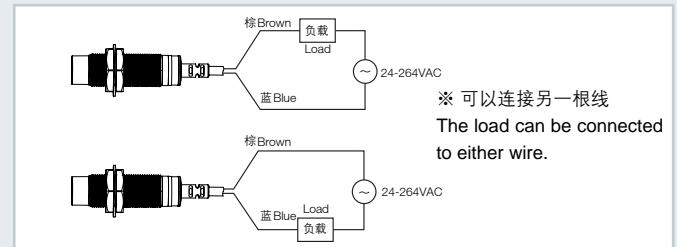
直流 2 线式 DC 2-wire type



直流 3 线式 DC 3-wire type



交流 2 线式 AC 2-wire type



周围金属的影响 Influence by surrounding metals

当接近传感器周围有金属存在时，为防止复位不正常等误差发生，安装时请满足下表中所规定的尺寸要求进行安装。
 When sensors are mounted on metallic panel, you must prevent the sensors from being affected by any metallic object except target. Therefore, be sure to provide a minimum distance as below chart indicates.

CJY-T 圆柱形接插型接近开关

Proximity Sensor Cylindrical Connector Type

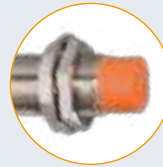


特点 Features

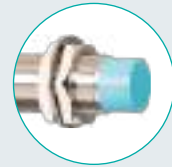
- 橙色标识代表标准型产品
- 浅绿色标识代表高端型产品
- Orange mark for standard type
- Light green mark for high-end type

- 采用专用 IC 提高抗干扰能力
- 内置浪涌保护, 电源反接保护和过流保护电路
- 寿命长, 高可靠性, 操作简单, 经济实惠
- 红色 LED 状态指示灯, 易于识别运行状态
- IP65 防护等级 (IEC 规格)
- 可以代替微动开关或限位开关广泛使用

- Exclusively designed IC for improving anti-jamming capability
- Inside surge protection, reverse polarity protection, overcurrent protection
- Long use-life cycle and high reliability, easy install, economic price
- Red LED status indication, easy to confirm work situation
- Protection structure IP65(IEC standard)
- Replaceable for limit switches

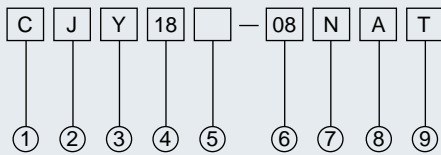


■ 橙色标准型
Orange



■ 浅绿色高端型
Light green

型号说明 Model Number Structure



项目 Item	代号 Code	说明 Description
① 公司代号 Company code	C	公司代号 Company code
② 产品名称 Product name	J	电感式接近开关 Inductive proximity sensor
③ 外壳形状 Shape of shell	Y	圆柱形 Cylinder-shaped
④ 尺寸代码 Dimension code	18	18=M18
⑤ 产品类型 Product type	无 Without	无 Without = 高端型 High-end type (浅绿色头部 Light green head)
	E	E = 标准型 Standard type (橙色头部 Orange head)
⑥ 检测距离 Detection distance	08	08=8mm
⑦ 输出方式 Output mode	K	AC 二线 AC 2wires
	L	DC 二线 DC 2wires
	P	PNP 三线 PNP 3wires
	N	NPN 三线 NPN 3wires
⑧ 输出状态 Output state	A	常开 NO
	B	常闭 NC
	C	常开 + 常闭 NO+NC
⑨ 连接形式 Connection	无 Without	引线式 Without: Lead wire
	T	接插式 Plug-in
	R	配线引出接插式 Wiring leads Plug-in

CJY-T 圆柱形接插型接近开关

Proximity Sensor Cylindrical Connector Type

规格 Specifications

直流 3 线式 DC 3-wire type

型号名 Model	高端型 High-end type	CJY12-02NAT CJY12-02NBT CJY12-02NCT CJY12-02PAT CJY12-02PBT CJY12-02PCT	CJY12-04NAT CJY12-04NBT CJY12-04NCT CJY12-04PAT CJY12-04PBT CJY12-04PCT	CJY18-05NAT CJY18-05NBT CJY18-05NCT CJY18-05PAT CJY18-05PBT CJY18-05PCT	CJY18-08NAT CJY18-08NBT CJY18-08NCT CJY18-08PAT CJY18-08PBT CJY18-08PCT	CJY30-10NAT CJY30-10NBT CJY30-10NCT CJY30-10PAT CJY30-10PBT CJY30-10PCT	CJY30-15NAT CJY30-15NBT CJY30-15NCT CJY30-15PAT CJY30-15PBT CJY30-15PCT
	标准型 Standard type	CJY12E-02NAT CJY12E-02NBT CJY12E-02NCT CJY12E-02PAT CJY12E-02PBT CJY12E-02PCT	CJY12E-04NAT CJY12E-04NBT CJY12E-04NCT CJY12E-04PAT CJY12E-04PBT CJY12E-04PCT	CJY18E-05NAT CJY18E-05NBT CJY18E-05NCT CJY18E-05PAT CJY18E-05PBT CJY18E-05PCT	CJY18E-08NAT CJY18E-08NBT CJY18E-08NCT CJY18E-08PAT CJY18E-08PBT CJY18E-08PCT	CJY30E-10NAT CJY30E-10NBT CJY30E-10NCT CJY30E-10PAT CJY30E-10PBT CJY30E-10PCT	CJY30E-15NAT CJY30E-15NBT CJY30E-15NCT CJY30E-15PAT CJY30E-15PBT CJY30E-15PCT
检测距离 Sensing distance	2mm		4mm	5mm	8mm	10mm	15mm
应差距离 Hysteresis	检测距离的 10% 以下 Max. 10% of sensing distance						
标准检测物 Standard sensing target	12 × 12 × 1mm (铁 Iron)		18 × 18 × 1mm (铁 Iron)	25 × 25 × 1mm (铁 Iron)	30 × 30 × 1mm (铁 Iron)	45 × 45 × 1mm (铁 Iron)	
设定距离 Setting distance	0~1.4mm	0~2.8mm	0~3.5mm	0~5.6mm	0~7mm	0~10.5mm	
电源 (使用电压范围) Power supply (Operating voltage)	12-24VDC (10-30VDC)						
漏电流 Leakage current	10mA 以下 Max.10mA						
应答频率 (※1) Response frequency (※1)	1000Hz	500Hz	500Hz	350Hz	350Hz(高端) 400Hz(标准)	200Hz	
残留电压 Residual voltage	1.0V 以下 Max. 1.0V						
温度的影响 Affection by Temp.	在 -25~+70℃ 温度范围内 +20℃ 时的检测距离的 ± 10% 以内 Max. ± 10% for sensing distance at ambient temperature 20℃						
控制输出 Control output	200mA 以下 Max. 200mA						
绝缘阻抗 Insulation resistance	50MΩ 以上 (500VDC 为基准) Min. 50MΩ (at 500VDC megger)						
耐电压 Dielectric strength	1500VAC 50/60Hz1 分钟 1500VAC 50/60Hz for 1minute						
耐振动 Vibration	10~55Hz(周期 1 分钟) 振幅 1mm X, Y, Z 各方向 2 小时 1mm amplitude at frequency of 10 to 55Hz(for 1 min.) in each of X, Y, Z directions for 2 hours						
耐冲击 Shock	500m/s ² (50G) X, Y, Z 各方向 3 次 500m/s ² (approx. 50G) X, Y, Z directions for 3 times						
显示灯 Indicator	动作指示灯 (红色 LED) Operation indicator(red LED)						
使用周围温度 Ambient temperature	-25~+70℃ (未结冰状态 No icing)						
储存温度 Storage temperature	-30~+80℃ (未结冰状态 No icing)						
使用周围湿度 Ambient humidity	35~95%RH (未结露状态 No condensation)						
保护电路 Protection circuit	内置浪涌保护, 电源反接保护电路, 过流保护电路 Surge protection circuit, Reverse polarity protection circuit, Overcurrent protection circuit						
材质 Material	外壳 / 螺母: 镀镍黄铜, 垫片: 镀镍铁, 检测面: PBT Case/Nut: Nickel plated Brass, Washer: Nickel plated Iron, Sensing surface: PBT						
防护等级 Protection	IP65						

(※1) 开关动作的应答频率为平均值。测定条件使用标准检测物, 检测物的间距为标准检测物的 2 倍, 设定距离为检测距离的 1/2。

(※1): The response frequency is the average value. The standard sensing target is used and the width is set as 2 times of the standard sensing target, 1/2 of the sensing distance for the distance.

CJY-T 圆柱形接插型接近开关

Proximity Sensor Cylindrical Connector Type

规格 Specifications

直流 2 线式 DC 2-wire type

型号名 Model	高端型 High-end type	CJY12-02LAT CJY12-02LBT	CJY12-04LAT CJY12-04LBT	CJY18-05LAT CJY18-05LBT	CJY18-08LAT CJY18-08LBT	CJY30-10LAT CJY30-10LBT	CJY30-15LAT CJY30-15LBT
	标准型 Standard type	CJY12E-02LAT	CJY12E-04LAT	CJY18E-05LAT	CJY18E-08LAT	CJY30E-10LAT	CJY30E-15LAT
检测距离 Sensing distance	2mm		4mm	5mm	8mm	10mm	15mm
应差距离 Hysteresis	检测距离的 10% 以下 Max. 10% of sensing distance						
标准检测物 Standard sensing target	12 × 12 × 1mm (铁 Iron)		18 × 18 × 1mm (铁 Iron)	25 × 25 × 1mm (铁 Iron)	30 × 30 × 1mm (铁 Iron)	45 × 45 × 1mm (铁 Iron)	
设定距离 Setting distance	0~1.4mm	0~2.8mm	0~3.5mm	0~5.6mm	0~7mm	0~10.5mm	
电源 (使用电压范围) Power supply (Operating voltage)	12-24VDC (10-30VDC)						
漏电流 Leakage current	0.6mA 以下 Max.0.6mA						
应答频率 (※1) Response frequency (※1)	1000Hz	500Hz	500Hz	350Hz	350Hz	200Hz	
残留电压 Residual voltage	3.5V 以下 Max. 3.5V						
温度的影响 Affection by Temp.	在 -25~+70℃ 温度范围内 +20℃ 时的检测距离的 ±10% 以内 Max. ±10% for sensing distance at ambient temperature 20℃						
控制输出 Control output	200mA 以下 Max. 200mA						
绝缘阻抗 Insulation resistance	50MΩ 以上 (500VDC 为基准) Min. 50MΩ (at 500VDC megger)						
耐电压 Dielectric strength	1500VAC 50/60Hz1 分钟 1500VAC 50/60Hz for 1minute						
耐振动 Vibration	10~55Hz(周期 1 分钟) 振幅 1mm X, Y, Z 各方向 2 小时 1mm amplitude at frequency of 10 to 55Hz(for 1 min.) in each of X, Y, Z directions for 2 hours						
耐冲击 Shock	500m/s ² (50G) X, Y, Z 各方向 3 次 500m/s ² (approx. 50G) X, Y, Z directions for 3 times						
显示灯 Indicator	动作指示灯 (红色 LED) Operation indicator(red LED)						
使用周围温度 Ambient temperature	-25~+70℃ (未结冰状态 No icing)						
储存温度 Storage temperature	-30~+80℃ (未结冰状态 No icing)						
使用周围湿度 Ambient humidity	35~95%RH (未结露状态 No condensation)						
保护电路 Protection circuit	浪涌保护电路 Surge protection circuit						
材质 Material	外壳 / 螺母: 镀镍黄铜, 垫片: 镍镀铁, 检测面: PBT Case/Nut: Nickel plated Brass, Washer: Nickel plated Iron, Sensing surface: PBT						
防护等级 Protection	IP65						

(※1) 开关动作的应答频率为平均值。测定条件使用标准检测物, 检测物的间距为标准检测物的 2 倍, 设定距离为检测距离的 1/2。

※ 标准产品和 IEC 标准的功能和规格是一样的。

(※1): The response frequency is the average value. The standard sensing target is used and the width is set as 2 times of the standard sensing target, 1/2 of the sensing distance for the distance.

CJY-T 圆柱形接插型接近开关

Proximity Sensor Cylindrical Connector Type

规格 Specifications

交流 2 线式 AC 2-wire type

型号名 Model	高端型 High-end type	/	CJY12-04KAT CJY12-04KBT	CJY18-05KAT CJY18-05KBT	CJY18-08KAT CJY18-08KBT	CJY30-10KAT CJY30-10KBT	CJY30-15KAT CJY30-15KBT
	标准型 Standard type	CJY12E-02KAT CJY12E-02KBT	CJY12E-04KAT CJY12E-04KBT	CJY18E-05KAT CJY18E-05KBT	CJY18E-08KAT CJY18E-08KBT	CJY30E-10KAT CJY30E-10KBT	CJY30E-15KAT CJY30E-15KBT
检测距离 Sensing distance	2mm	4mm	5mm	8mm	10mm	15mm	
应差距离 Hysteresis	检测距离的 10% 以下 Max. 10% of sensing distance						
标准检测物 Standard sensing target	12 × 12 × 1mm (铁 Iron)		18 × 18 × 1mm (铁 Iron)	25 × 25 × 1mm (铁 Iron)	30 × 30 × 1mm (铁 Iron)	45 × 45 × 1mm (铁 Iron)	
设定距离 Setting distance	0~1.4mm	0~2.8mm	0~3.5mm	0~5.6mm	0~7mm	0~10.5mm	
电源 (使用电压范围) Power supply (Operating voltage)	90-250VAC						
漏电流 Leakage current	10mA 以下 Max.10mA						
应答频率 (※1) Response frequency (※1)	20Hz						
残留电压 Residual voltage	10V 以下 Max. 10V						
温度的影响 Affection by Temp.	在 -25~+70℃ 温度范围内 +20℃ 时的检测距离的 ± 10% 以内 Max. ± 10% for sensing distance at ambient temperature 20℃						
控制输出 Control output	200mA 以下 Max. 200mA						
绝缘阻抗 Insulation resistance	50MΩ 以上 (500VDC 为基准) Min. 50MΩ (at 500VDC megger)						
耐电压 Dielectric strength	1500VAC 50/60Hz1 分钟 1500VAC 50/60Hz for 1minute						
耐振动 Vibration	10~55Hz(周期 1 分钟) 振幅 1mm X, Y, Z 各方向 2 小时 1mm amplitude at frequency of 10 to 55Hz(for 1 min.) in each of X, Y, Z directions for 2 hours						
耐冲击 Shock	500m/s ² (50G) X, Y, Z 各方向 3 次 500m/s ² (approx. 50G) X, Y, Z directions for 3 times						
显示灯 Indicator	动作指示灯 (红色 LED) Operation indicator(red LED)						
使用周围温度 Ambient temperature	-25~+70℃ (未结冰状态 No icing)						
储存温度 Storage temperature	-30~+80℃ (未结冰状态 No icing)						
使用周围湿度 Ambient humidity	35~95%RH (未结露状态 No condensation)						
保护电路 Protection circuit	浪涌保护电路 Surge protection current						
材质 Material	外壳 / 螺母: 镀镍黄铜, 垫片: 镀镍铁, 检测面: PBT Case/Nut: Nickel plated Brass, Washer: Nickel plated Iron, Sensing surface: PBT						
防护等级 Protection	IP65						

(※1) 开关动作的应答频率为平均值。测定条件使用标准检测物, 检测物的间距为标准检测物的 2 倍, 设定距离为检测距离的 1/2。

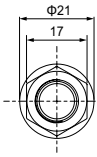
(※1): The response frequency is the average value. The standard sensing target is used and the width is set as 2 times of the standard sensing target, 1/2 of the sensing distance for the distance.

CJY-T 圆柱形接插型接近开关 (高端型)

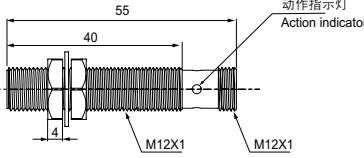
Proximity Sensor Cylindrical Connector Type (High-end type)

外观和尺寸 Appearance and Dimension

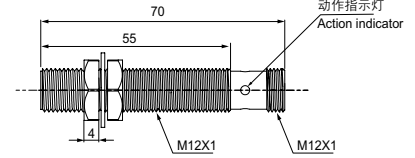
CJY12-02T



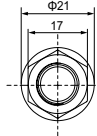
NA NB PA PB LA LB 如下图:
NA NB PA PB LA LB Following chart



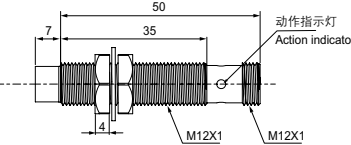
NC PC 如下图:
NC PC Following chart



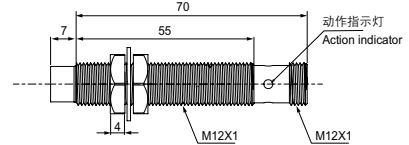
CJY12-04T



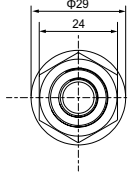
NA NB PA PB LA LB 如下图:
NA NB PA PB LA LB Following chart



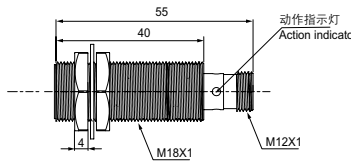
NC PC KA KB 如下图:
NC PC KA KB Following chart



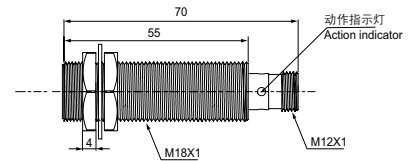
CJY18-05T



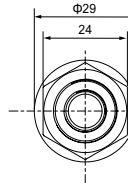
NA NB PA PB LA LB 如下图:
NA NB PA PB LA LB Following chart



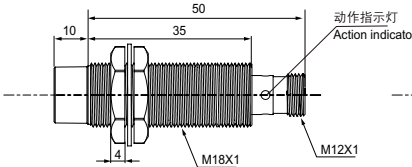
NC PC KA KB 如下图:
NC PC KA KB Following chart



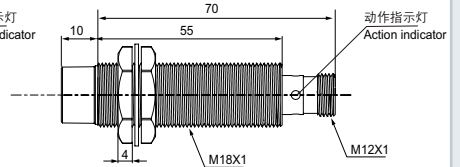
CJY18-08T



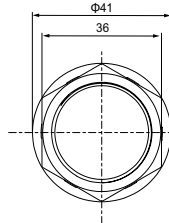
NA NB PA PB LA LB 如下图:
NA NB PA PB LA LB Following chart



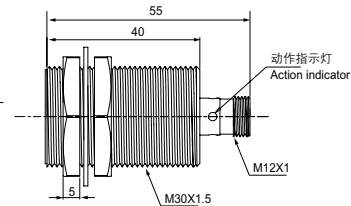
NC PC KA KB 如下图:
NC PC KA KB Following chart



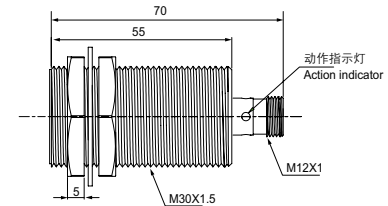
CJY30-10T



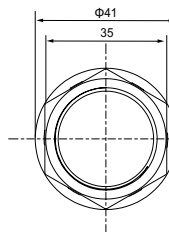
NA NB PA PB LA LB 如下图:
NA NB PA PB LA LB Following chart



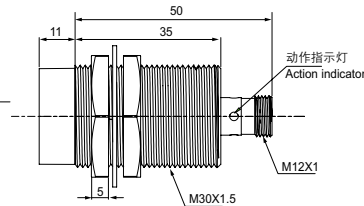
NC PC KA KB 如下图:
NC PC KA KB Following chart



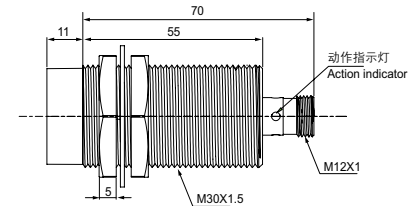
CJY30-15T



NA NB PA PB LA LB 如下图:
NA NB PA PB LA LB Following chart



NC PC KA KB 如下图:
NC PC KA KB Following chart

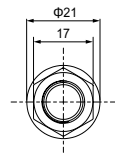


CJY-T 圆柱形接插型接近开关 (标准型)

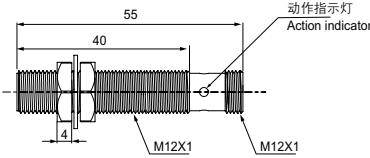
Proximity Sensor Cylindrical Connector Type (Standard type)

外观和尺寸 Appearance and Dimension

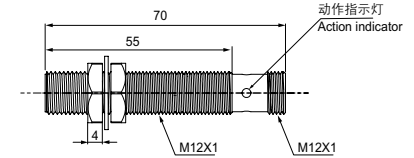
CJY12E-02T



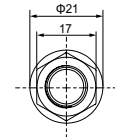
NA NB NC PA PB PC LA LB 如下图:
NA NB NC PA PB PC LA LB Following chart



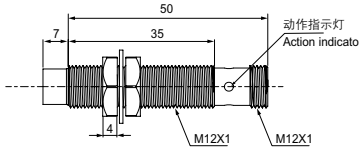
KA KB 如下图:
KA KB Following chart



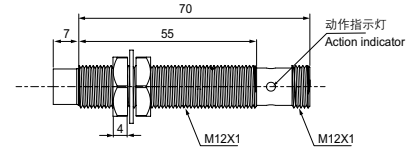
CJY12E-04T



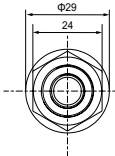
NA NB NC PA PB PC LA LB 如下图:
NA NB NC PA PB PC LA LB Following chart



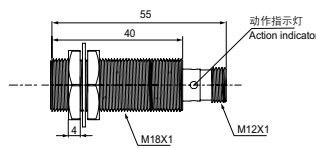
KA KB 如下图:
KA KB Following chart



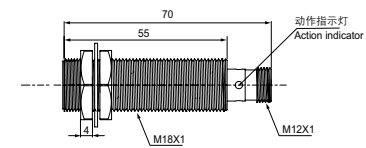
CJY18E-05T



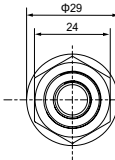
NA NB NC PA PB PC LA LB 如下图:
NA NB NC PA PB PC LA LB Following chart



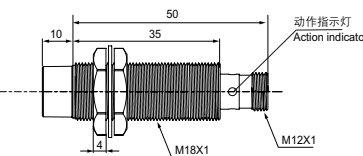
KA KB 如下图:
KA KB Following chart



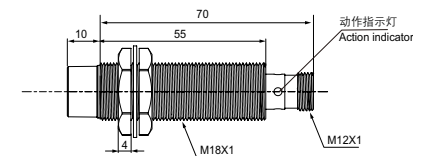
CJY18E-08T



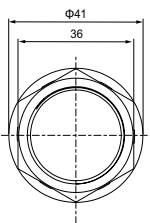
NA NB NC PA PB PC LA LB 如下图:
NA NB NC PA PB PC LA LB Following chart



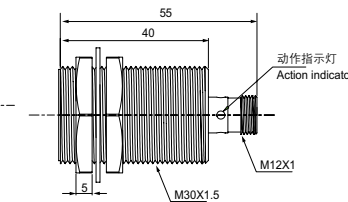
KA KB 如下图:
KA KB Following chart



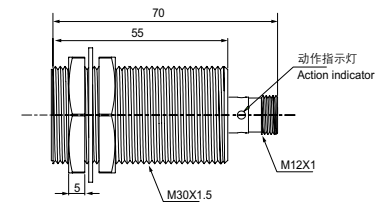
CJY30E-10T



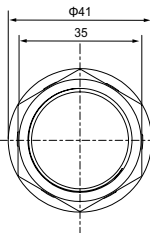
NA NB NC PA PB PC LA LB 如下图:
NA NB NC PA PB PC LA LB Following chart



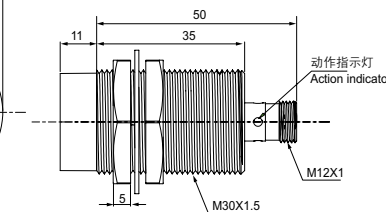
KA KB 如下图:
KA KB Following chart



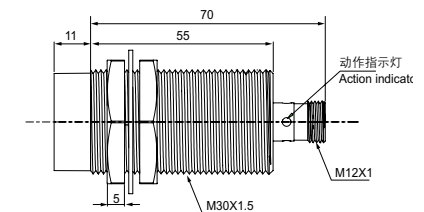
CJY30E-15T



NA NB NC PA PB PC LA LB 如下图:
NA NB NC PA PB PC LA LB Following chart



KA KB 如下图:
KA KB Following chart

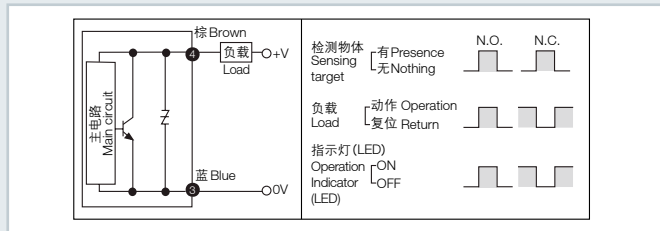


CJY-T 圆柱形插接型接近开关

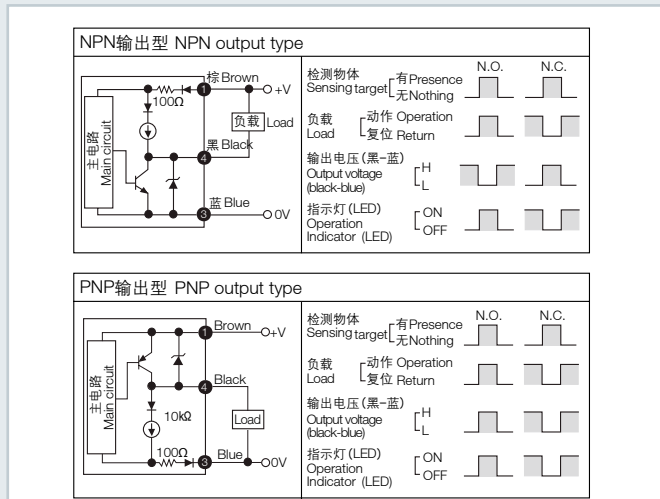
Proximity Sensor Cylindrical Connector Type

输出电路 Control Output Diagram

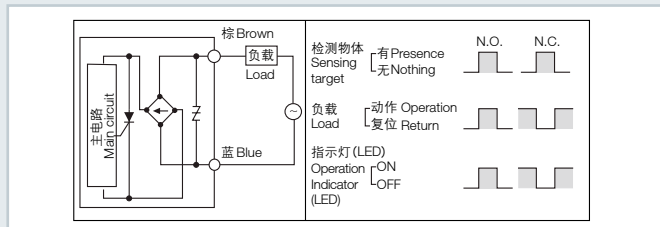
直流 2 线式 DC 2-wire type



直流 3 线式 DC 3-wire type



交流 2 线式 AC 2-wire type

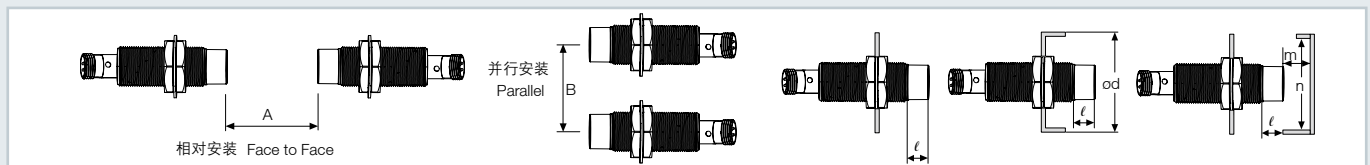


正确使用 Proper Usage

相互干扰 Mutual-interference

当把两个以上的接近开关一起安装使用时, 可能会发生相互干扰引起的误动作, 在安装时请务必满足下表中规定的尺寸要求进行安装。

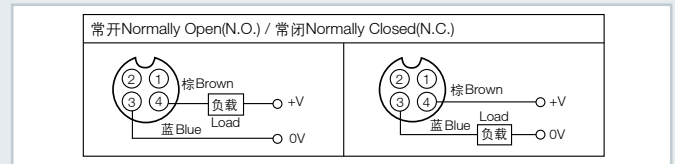
When several proximity sensors are mounted close to one another a malfunction of the sensor may be caused due to mutual interference. Therefore, be sure to provide a minimum distance between the two sensors as below chart indicates.



型号名 Model	CJY12-02T	CJY12-04T	CJY18-05T	CJY18-08T	CJY30-10T	CJY30-15T
项目 Item	CJY12E-02T	CJY12E-04T	CJY18E-05T	CJY18E-08T	CJY30E-10T	CJY30E-15T
A	12	24	30	48	60	90
B	24	36	36	54	60	90
l	0	11	0	14	0	15
φ d	12	36	18	54	30	90
m	6	12	15	24	30	45
n	18	36	27	54	45	90

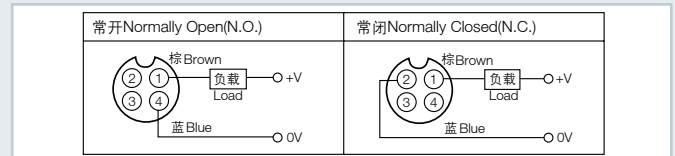
连接器接线图 Wiring Diagram

直流 2 线式 (标准型) DC 2-wire type (Standard type)



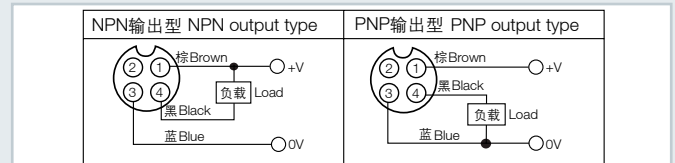
※ Pin ①, ② 为 N.C.(Not Connected) 端子。
 ※ 当使用直流 3 线连接电缆时, 黑线作为 (24VDC) 及蓝线作为 (0V) 使用。
 ※ Pin ①, ② are not used terminals.
 ※ When using DC 3-wire type of connector cable, black (12-24VDC) and blue(0V) cables can be used.

直流 2 线式 (IEC 规格) DC 2-wire type (IEC standard type)



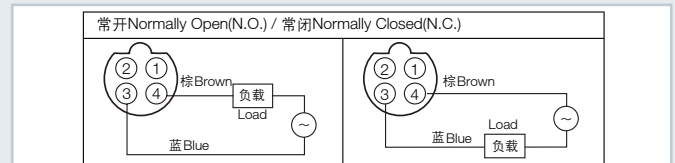
※ N.O.Type 的 ②, ③ 与 N.C.Type 的 ③, ④ 为 N.C.(Not Connected) 端子。
 ※ 请使用 IEC 规格的接插头。
 ※ ②, ③ of N.O. type and ③, ④ of N.C. type are not used terminals.
 ※ Please use the IEC specifications of the plug.

直流 3 线式 DC 3-wire type



※ 结合接插头时, 请使用 (0.39~0.49N*m) 拧紧螺丝。
 ※ 在发生震动的地方请用胶带缠住连接线缆后使用。
 ※ Please fasten the cleat of connector not to shown the thread. (0.39 to 0.49N.m)
 ※ Please fasten the vibration part with Teflon tape.

交流 2 线式 AC 2-wire type



※ 交流开闭型时, ②与③, ①与④内部是相连接的。
 ※ In case of AC switching type, ② and ③, ① and ④ are connected to each other inside.

周围金属的影响 Influence by surrounding metals

当接近传感器周围有金属存在时, 为防止复位不正常等误差发生, 安装时请满足下表中规定的尺寸要求进行安装。

When sensors are mounted on metallic panel, you must prevent the sensors from being affected by any metallic object except target. Therefore, be sure to provide a minimum distance as below chart indicates.

CJY-R 圆柱形引线接插型接近开关

Proximity Sensor Cylindrical Cable Connector Type

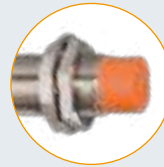


特点 Features

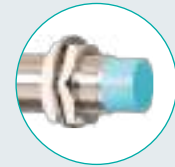
- 橙色标识代表标准型产品
- 浅绿色标识代表高端型产品
- Orange mark for standard type
- Light green mark for high-end type

- 采用专用 IC 提高抗干扰能力
- 内置浪涌保护, 电源反接保护和过流保护电路
- 寿命长, 高可靠性, 操作简单, 经济实惠
- 红色 LED 状态指示灯, 易于识别运行状态
- IP67 防护等级 (IEC 规格)
- 可以代替微动开关或限位开关广泛使用

- Exclusively designed IC for improving anti-jamming capability
- Inside surge protection, reverse polarity protection, overcurrent protection
- Long use-life cycle and high reliability, easy install, economic price
- Red LED status indication, easy to confirm work situation
- Protection structure IP67(IEC standard)
- Replaceable for limit switches

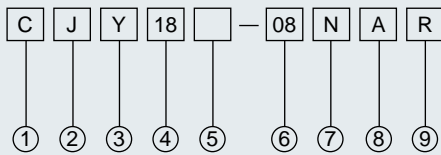


■ 橙色标准型
Orange



■ 浅绿色高端型
Light green

型号说明 Model Number Structure



项目 Item	代号 Code	说明 Description
① 公司代号 Company code	C	公司代号 Company code
② 产品名称 Product name	J	电感式接近开关 Inductive proximity sensor
③ 外壳形状 Shape of shell	Y	圆柱形 Cylinder-shaped
④ 尺寸代码 Dimension code	18	18=M18
⑤ 产品类型 Product type	无 Without	无 Without = 高端型 High-end type (浅绿色头部 Light green head)
	E	E = 标准型 Standard type (橙色头部 Orange head)
⑥ 检测距离 Detection distance	08	08=8mm
⑦ 输出方式 Output mode	K	AC 二线 AC 2wires
	L	DC 二线 DC 2wires
	P	PNP 三线 PNP 3wires
	N	NPN 三线 NPN 3wires
⑧ 输出状态 Output state	A	常开 NO
	B	常闭 NC
	C	常开 + 常闭 NO+NC
⑨ 连接形式 Connection	无 Without	引线式 Without: Lead wire
	T	接插式 Plug-in
	R	配线引出接插式 Wiring leads Plug-in

CJY-R 圆柱形引线接插型接近开关
 Proximity Sensor Cylindrical Cable Connector Type

规格 Specifications

直流 3 线式 DC 3-wire type

型号名 Model	高端型 High-end type	CJY12-02NAR CJY12-02NBR CJY12-02NCR CJY12-02PAR CJY12-02PBR CJY12-02PCR	CJY12-04NAR CJY12-04NBR CJY12-04NCR CJY12-04PAR CJY12-04PBR CJY12-04PCR	CJY18-05NAR CJY18-05NBR CJY18-05NCR CJY18-05PAR CJY18-05PBR CJY18-05PCR	CJY18-08NAR CJY18-08NBR CJY18-08NCR CJY18-08PAR CJY18-08PBR CJY18-08PCR	CJY30-10NAR CJY30-10NBR CJY30-10NCR CJY30-10PAR CJY30-10PBR CJY30-10PCR	CJY30-15NAR CJY30-15NBR CJY30-15NCR CJY30-15PAR CJY30-15PBR CJY30-15PCR
	标准型 Standard type	CJY12E-02NAR CJY12E-02NBR CJY12E-02NCR CJY12E-02PAR CJY12E-02PBR CJY12E-02PCR	CJY12E-04NAR CJY12E-04NBR CJY12E-04NCR CJY12E-04PAR CJY12E-04PBR CJY12E-04PCR	CJY18E-05NAR CJY18E-05NBR CJY18E-05NCR CJY18E-05PAR CJY18E-05PBR CJY18E-05PCR	CJY18E-08NAR CJY18E-08NBR CJY18E-08NCR CJY18E-08PAR CJY18E-08PBR CJY18E-08PCR	CJY30E-10NAR CJY30E-10NBR CJY30E-10NCR CJY30E-10PAR CJY30E-10PBR CJY30E-10PCR	CJY30E-15NAR CJY30E-15NBR CJY30E-15NCR CJY30E-15PAR CJY30E-15PBR CJY30E-15PCR
检测距离 Sensing distance		2mm	4mm	5mm	8mm	10mm	15mm
应差距离 Hysteresis	检测距离的 10% 以下 Max. 10% of sensing distance						
标准检测物 Standard sensing target		12 × 12 × 1mm (铁 Iron)		18 × 18 × 1mm (铁 Iron)	25 × 25 × 1mm (铁 Iron)	30 × 30 × 1mm (铁 Iron)	45 × 45 × 1mm (铁 Iron)
设定距离 Setting distance		0~1.4mm	0~2.8mm	0~3.5mm	0~5.6mm	0~7mm	0~10.5mm
电源 (使用电压范围) Power supply (Operating voltage)	12-24VDC (10-30VDC)						
漏电流 Leakage current	10mA 以下 Max.10mA						
应答频率 (*1) Response frequency (*1)		1000Hz	500Hz	500Hz	350Hz	350Hz	200Hz
残留电压 Residual voltage	1.0V 以下 Max. 1.0V						
温度的影响 Affection by Temp.	在 -25~+70℃ 温度范围内 +20℃ 时的检测距离的 ± 10% 以内 Max. ± 10% for sensing distance at ambient temperature 20℃						
控制输出 Control output	200mA 以下 Max. 200mA						
绝缘阻抗 Insulation resistance	50MΩ 以上 (500VDC 为基准) Min. 50MΩ (at 500VDC megger)						
耐电压 Dielectric strength	1500VAC 50/60Hz1 分钟 1500VAC 50/60Hz for 1minute						
耐振动 Vibration	10~55Hz(周期 1 分钟) 振幅 1mm X, Y, Z 各方向 2 小时 1mm amplitude at frequency of 10 to 55Hz(for 1 min.) in each of X, Y, Z directions for 2 hours						
耐冲击 Shock	500m/s ² (50G) X, Y, Z 各方向 3 次 500m/s ² (approx. 50G) X, Y, Z directions for 3 times						
显示灯 Indicator	动作指示灯 (红色 LED) Operation indicator(red LED)						
使用周围温度 Ambient temperature	-25~+70℃ (未结冰状态 No icing)						
储存温度 Storage temperature	-30~+80℃ (未结冰状态 No icing)						
使用周围湿度 Ambient humidity	35~95%RH (未结露状态 No condensation)						
保护电路 Protection circuit	内置浪涌保护, 电源反接保护电路, 过流保护电路 Surge protection circuit, Reverse polarity protection circuit, Overcurrent protection circuit						
材质 Material	外壳 / 螺母: 镀镍黄铜, 垫片: 镍镀铁, 检测面: PBT, 一般线缆 (灰色): 聚氯乙烯 (PVC), 耐油性线缆 (黑色): 聚氯乙烯 (耐油强化型 PVC) Case/Nut: Nickel plated Brass, Washer: Nickel plated Iron, Sensing surface: PBT, Standard cable(Gray): Polyvinyl chloride(PVC), Oil resistant cable(Black): Oil resistant Polyvinyl chloride(PVC)						
连接线缆 Cable		φ 3.8, 3P,4P 300mm, M12 连接器 connector			φ 4.8, 3P,4P 300mm, M12 连接器 connector		
防护等级 Protection	IP67						

(※1) 开关动作的应答频率为平均值。测定条件使用标准检测物, 检测物的间距为标准检测物的 2 倍, 设定距离为检测距离的 1/2。

(※1): The response frequency is the average value. The standard sensing target is used and the width is set as 2 times of the standard sensing target, 1/2 of the sensing distance for the distance.

CJY-R 圆柱形引线接插型接近开关

Proximity Sensor Cylindrical Cable Connector Type

规格 Specifications

直流 2 线式 DC 2-wire type

型号名 Model	CJY12-02LAR CJY12-02LBR	CJY12-04LAR CJY12-04LBR	CJY18-05LAR CJY18-05LBR	CJY18-08LAR CJY18-08LBR	CJY30-10LAR CJY30-10LBR	CJY30-15LAR CJY30-15LBR
检测距离 Sensing distance	2mm	4mm	5mm	8mm	10mm	15mm
应差距离 Hysteresis	检测距离的 10% 以下 Max. 10% of sensing distance					
标准检测物 Standard sensing target	12 × 12 × 1mm (铁 Iron)		18 × 18 × 1mm (铁 Iron)	25 × 25 × 1mm (铁 Iron)	30 × 30 × 1mm (铁 Iron)	45 × 45 × 1mm (铁 Iron)
设定距离 Setting distance	0~1.4mm	0~2.8mm	0~3.5mm	0~5.6mm	0~7mm	0~10.5mm
电源 (使用电压范围) Power supply (Operating voltage)	12-24VDC (10-30VDC)					
漏电流 Leakage current	0.6mA 以下 Max.0.6mA					
应答频率 (※1) Response frequency (※1)	1000Hz	500Hz	500Hz	350Hz	350Hz	200Hz
残留电压 Residual voltage	3.5V 以下 Max. 3.5V					
温度的影响 Affection by Temp.	在 -25~+70℃ 温度范围内 +20℃ 时的检测距离的 ±10% 以内 Max. ±10% for sensing distance at ambient temperature 20℃					
控制输出 Control output	200mA 以下 Max. 200mA					
绝缘阻抗 Insulation resistance	50MΩ 以上 (500VDC 为基准) Min. 50MΩ (at 500VDC megger)					
耐电压 Dielectric strength	1500VAC 50/60Hz1 分钟 1500VAC 50/60Hz for 1minute					
耐振动 Vibration	10~55Hz(周期 1 分钟) 振幅 1mm X, Y, Z 各方向 2 小时 1mm amplitude at frequency of 10 to 55Hz(for 1 min.) in each of X, Y, Z directions for 2 hours					
耐冲击 Shock	500m/s ² (50G) X, Y, Z 各方向 3 次 500m/s ² (approx. 50G) X, Y, Z directions for 3 times					
显示灯 Indicator	动作指示灯 (红色 LED) Operation indicator(red LED)					
使用周围温度 Ambient temperature	-25~+70℃ (未结冰状态 No icing)					
储存温度 Storage temperature	-30~+80℃ (未结冰状态 No icing)					
使用周围湿度 Ambient humidity	35~95%RH (未结露状态 No condensation)					
保护电路 Protection circuit	内置浪涌保护, 过流保护电路 Surge protection circuit, Overcurrent protection circuit					
材质 Material	外壳/螺母: 镀镍黄铜, 垫片: 镍镀铁, 检测面: PBT, 一般线缆 (灰色): 聚氯乙烯 (PVC), 耐油性线缆 (黑色): 聚氯乙烯 (耐油强化型 PVC) Case/Nut: Nickel plated Brass, Washer: Nickel plated Iron, Sensing surface: PBT, Standard cable(Gray): Polyvinyl chloride(PVC), Oil resistant cable(Black): Oil resistant Polyvinyl chloride(PVC)					
连接线缆 Cable	φ 3.8, 2P, 300mm, M12 连接器 connector			φ 4.8, 2P, 300mm, M12 连接器 connector		
防护等级 Protection	IP67					

(※1) 开关动作的应答频率为平均值。测定条件使用标准检测物, 检测物的间距为标准检测物的 2 倍, 设定距离为检测距离的 1/2。

(※1): The response frequency is the average value. The standard sensing target is used and the width is set as 2 times of the standard sensing target, 1/2 of the sensing distance for the distance.

CJY-R 圆柱形引线接插型接近开关
 Proximity Sensor Cylindrical Cable Connector Type

规格 Specifications

交流 2 线式 AC 2-wire type

型号名 Model	CJY12-02KAR CJY12-02KBR	CJY12-04KAR CJY12-04KBR	CJY18-05KAR CJY18-05KBR	CJY18-08KAR CJY18-08KBR	CJY30-10KAR CJY30-10KBR	CJY30-15KAR CJY30-15KBR
检测距离 Sensing distance	2mm	4mm	5mm	8mm	10mm	15mm
应差距离 Hysteresis	检测距离的 10% 以下 Max. 10% of sensing distance					
标准检测物 Standard sensing target	12 × 12 × 1mm (铁 Iron)		18 × 18 × 1mm (铁 Iron)	25 × 25 × 1mm (铁 Iron)	30 × 30 × 1mm (铁 Iron)	45 × 45 × 1mm (铁 Iron)
设定距离 Setting distance	0~1.4mm	0~2.8mm	0~3.5mm	0~5.6mm	0~7mm	0~10.5mm
电源 (使用电压范围) Power supply (Operating voltage)	24-250VAC					
漏电流 Leakage current	10mA 以下 Max.10mA					
应答频率 (※1) Response frequency (※1)	20Hz					
残留电压 Residual voltage	10V 以下 Max. 10V					
温度的影响 Affection by Temp.	在 -25~+70℃ 温度范围内 +20℃ 时的检测距离的 ±10% 以内 Max. ±10% for sensing distance at ambient temperature 20℃					
控制输出 Control output	200mA 以下 Max. 200mA					
绝缘阻抗 Insulation resistance	50MΩ 以上 (500VDC 为基准) Min. 50MΩ (at 500VDC megger)					
耐电压 Dielectric strength	1500VAC 50/60Hz1 分钟 1500VAC 50/60Hz for 1minute					
耐振动 Vibration	10~55Hz(周期 1 分钟) 振幅 1mm X, Y, Z 各方向 2 小时 1mm amplitude at frequency of 10 to 55Hz(for 1 min.) in each of X, Y, Z directions for 2 hours					
耐冲击 Shock	500m/s ² (50G) X, Y, Z 各方向 3 次 500m/s ² (approx. 50G) X, Y, Z directions for 3 times					
显示灯 Indicator	动作指示灯 (红色 LED) Operation indicator(red LED)					
使用周围温度 Ambient temperature	-25~+70℃ (未结冰状态 No icing)					
储存温度 Storage temperature	-30~+80℃ (未结冰状态 No icing)					
使用周围湿度 Ambient humidity	35~95%RH (未结露状态 No condensation)					
保护电路 Protection circuit	内置浪涌保护电路 Surge protection current					
材质 Material	外壳 / 螺母: 镀镍黄铜, 垫片: 镍镀铁, 检测面: PBT, 一般线缆 (灰色): 聚氯乙烯 (PVC), 耐油性线缆 (黑色): 聚氯乙烯 (耐油强化型 PVC) Case/Nut: Nickel plated Brass, Washer: Nickel plated Iron, Sensing surface: PBT, Standard cable(Gray): Polyvinyl chloride(PVC), Oil resistant cable(Black): Oil resistant Polyvinyl chloride(PVC)					
连接线缆 Cable	φ 3.8, 2P, 300mm, M12 连接器 connector			φ 4.8, 2P, 300mm, M12 连接器 connector		
防护等级 Protection	IP67					

(※1) 开关动作的应答频率为平均值。测定条件使用标准检测物, 检测物的间距为标准检测物的 2 倍, 设定距离为检测距离的 1/2。

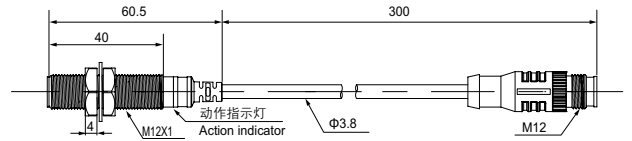
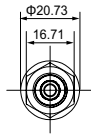
(※1): The response frequency is the average value. The standard sensing target is used and the width is set as 2 times of the standard sensing target, 1/2 of the sensing distance for the distance.

CJY-R 圆柱形引线接插型接近开关 (高端型)

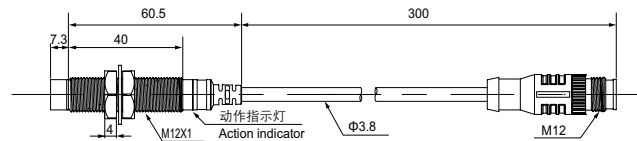
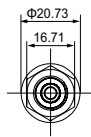
Proximity Sensor Cylindrical Cable Connector Type (High-end type)

外观和尺寸 Appearance and Dimension

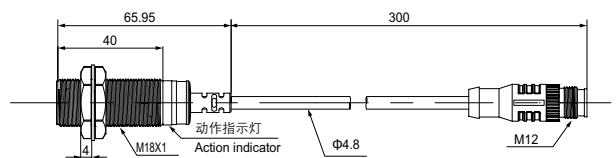
CJY12-02R



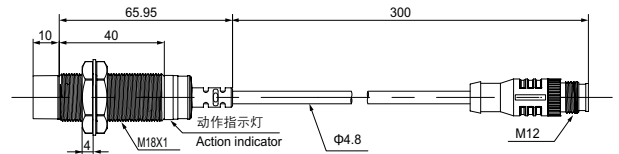
CJY12-04R



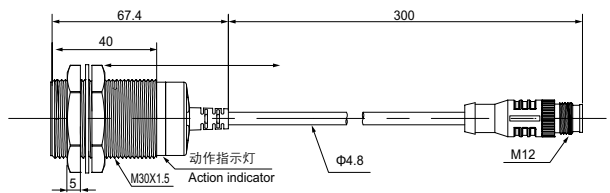
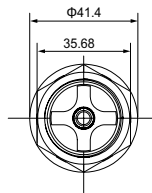
CJY18-05R



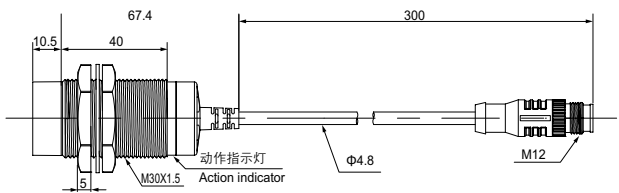
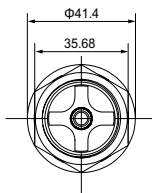
CJY18-08R



CJY30-10R



CJY30-15R

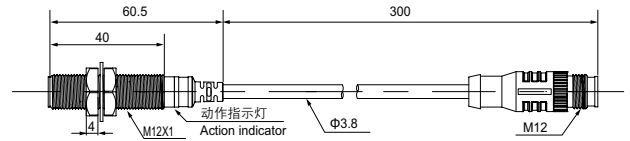
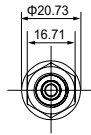


CJY-R 圆柱形引线接插型接近开关 (标准型)

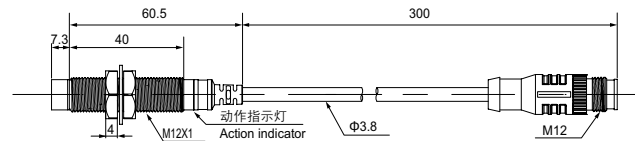
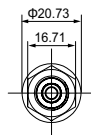
Proximity Sensor Cylindrical Cable Connector Type (Standard type)

外观和尺寸 Appearance and Dimension

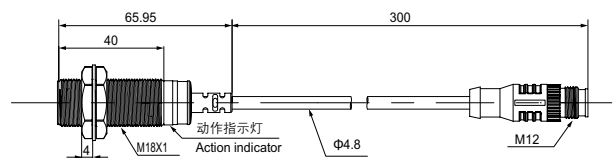
CJY12E-02R



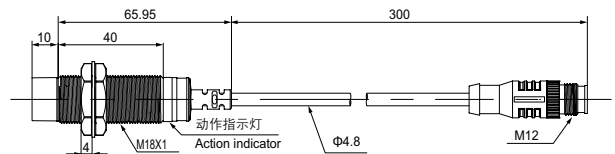
CJY12E-04R



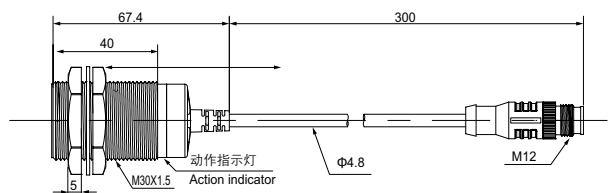
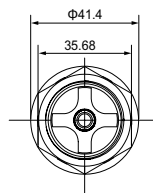
CJY18E-05R



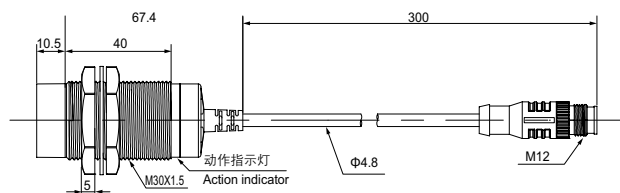
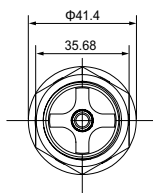
CJY18E-08R



CJY30E-10R



CJY30E-15R

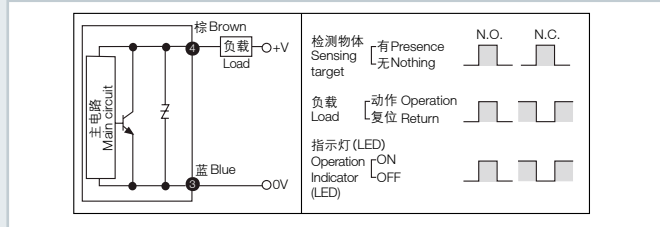


CJY-R 圆柱形引线接插型接近开关

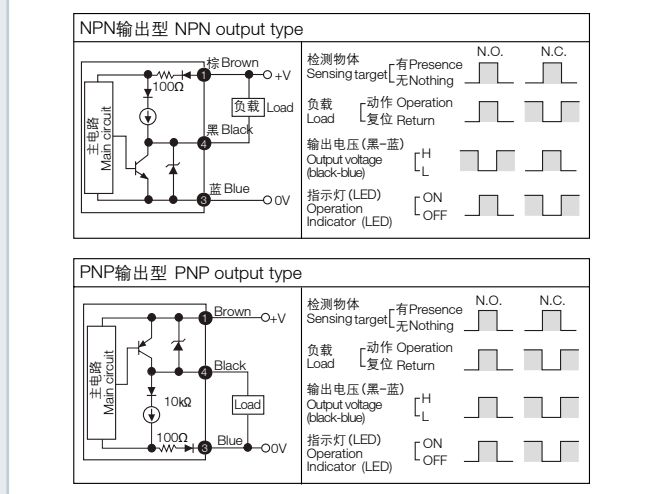
Proximity Sensor Cylindrical Cable Connector Type

输出电路 Control Output Diagram

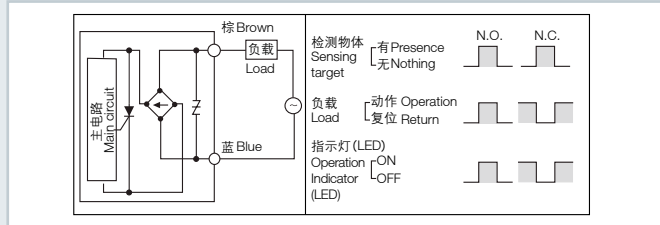
直流 2 线式 DC 2-wire type



直流 3 线式 DC 3-wire type



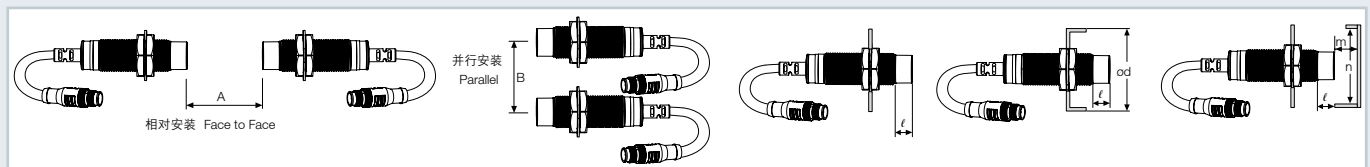
交流 2 线式 AC 2-wire type



正确使用 Proper Usage

相互干扰 Mutual-interference

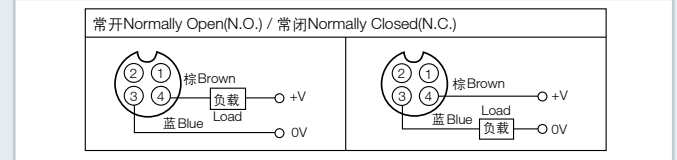
当把两个以上的接近开关一起安装使用时，可能会发生相互干扰引起的误动作，在安装时请务必满足下表中规定的尺寸要求进行安装。
When several proximity sensors are mounted close to one another a malfunction of the sensor may be caused due to mutual interference. Therefore, be sure to provide a minimum distance between the two sensors as below chart indicates.



型号名 Model	CJY12-02R	CJY12-04R	CJY18-05R	CJY18-08R	CJY30-10R	CJY30-15R
项目 Item	CJY12E-02R	CJY12E-04R	CJY18E-05R	CJY18E-08R	CJY30E-10R	CJY30E-15R
A	12	24	30	48	60	90
B	24	36	36	54	60	90
l	0	11	0	14	0	15
φ d	12	36	18	54	30	90
m	6	12	15	24	30	45
n	18	36	27	54	45	90

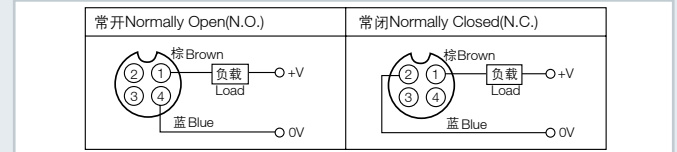
连接器接线图 Wiring Diagram

直流 2 线式 (标准型) DC 2-wire type (Standard type)



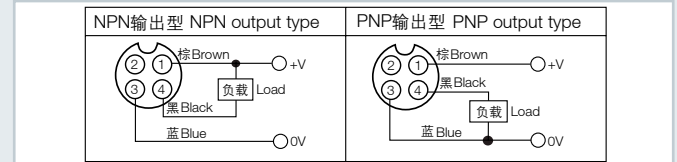
- ※ Pin ①, ② 为 N.C.(Not Connected) 端子。
- ※ 当使用直流 3 线连接电缆时，黑线作为 (24VDC) 及蓝线作为 (0V) 使用。
- ※ Pin ①, ② are not used terminals.
- ※ When using DC 3-wire type of connector cable, black (12-24VDC) and blue(0V) cables can be used.

直流 2 线式 (IEC 规格) DC 2-wire type (IEC standard type)



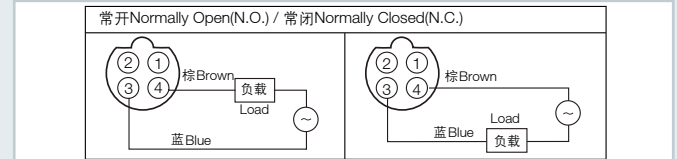
- ※ N.O.Type 的 ②, ③ 与 N.C.Type 的 ③, ④ 为 N.C.(Not Connected) 端子。
- ※ 请使用 IEC 规格的接插头。
- ※ ②, ③ of N.O. type and ③, ④ of N.C. type are not used terminals.
- ※ Please use the IEC specifications of the plug.

直流 3 线式 DC 3-wire type



- ※ 结合接插头时，请使用 (0.39~0.49N*m) 拧紧螺丝。
- ※ 在发生震动的地方请用胶带缠住连接线缆后使用。
- ※ Please fasten the cleat of connector not to shown the thread. (0.39 to 0.49N.m)
- ※ Please fasten the vibration part with Teflon tape.

交流 2 线式 AC 2-wire type



- ※ 交流开闭型时，②与③、①与④内部是相连接的。
- ※ In case of AC switching type, ② and ③, ① and ④ are connected to each other inside.

周围金属的影响 Influence by surrounding metals

当接近传感器周围有金属存在时，为防止复位不正常等误差发生，安装时请满足下表中规定的尺寸要求进行安装。
When sensors are mounted on metallic panel, you must prevent the sensors from being affected by any metallic object except target. Therefore, be sure to provide a minimum distance as below chart indicates.

CJY□S 圆柱形远距离检测接近开关

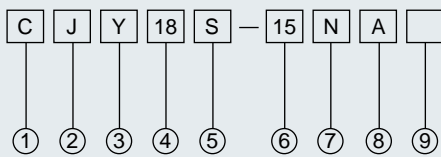
Long Distance Proximity Sensor Cylindrical Type

特点 Features

- 可以实现远距离检测 (额定检测距离比原有产品提高 1.5 ~ 2 倍)
 - 采用专用 IC 提高抗干扰能力
 - 内置浪涌保护, 电源反接保护和过流保护电路
 - 寿命长, 高可靠性, 操作简单, 经济实惠
 - 红色 LED 状态指示灯, 易于识别运行状态
 - IP67 防护等级 (IEC 规格)
 - 可以代替微动开关或限位开关广泛使用
- Long sensing distance (1.5 to 2 times longer sensing distance guaranteed compared to existing models)
 - Exclusively designed IC for improving anti-jamming capability
 - Inside surge protection, reverse polarity protection, overcurrent protection
 - Long use-life cycle and high reliability, easy install, economic price
 - Red LED status indication, easy to confirm work situation
 - Protection structure IP67(IEC standard)
 - Replaceable for limit switches



型号说明 Model Number Structure



项目 Item	代号 Code	说明 Description
① 公司代号 Company code	C	公司代号 Company code
② 产品名称 Product name	J	电感式接近开关 Inductive proximity sensor
③ 外壳形状 Shape of shell	Y	圆柱形 Cylinder-shaped
④ 尺寸代码 Dimension code	18	18=M18
⑤ 产品类型 Product type	S	远距离型 Long-range type
⑥ 检测距离 Detection distance	15	15=15mm
	K	AC 二线 AC 2wires
	L	DC 二线 DC 2wires
	P	PNP 三线 PNP 3wires
⑦ 输出方式 Output mode	N	NPN 三线 NPN 3wires
	A	常开 NO
	B	常闭 NC
⑧ 输出状态 Output state	C	常开 + 常闭 NO+NC
	无 Without	引线式 Without: Lead wire
	T	接插式 Plug-in
⑨ 连接形式 Connection	R	配线引出接插式 Wiring leads Plug-in

CJY□S 圆柱形远距离检测接近开关

Long Distance Sensing Proximity Sensors (Cylindrical type)

规格 Specifications

直流 3 线式 DC 3-wire type

型号名 Model	CJY08S-1.5NA CJY08S-1.5NB CJY08S-1.5PA CJY08S-1.5PB	CJY08S-03NA CJY08S-03NB CJY08S-03PA CJY08S-03PB	CJY12S-04NA CJY12S-04NB CJY12S-04NC CJY12S-04PA CJY12S-04PB CJY12S-04PC	CJY12S-07NA CJY12S-07NB CJY12S-07NC CJY12S-07PA CJY12S-07PB CJY12S-07PC	CJY18S-10NA CJY18S-10NB CJY18S-10NC CJY18S-10PA CJY18S-10PB CJY18S-10PC	CJY18S-15NA CJY18S-15NB CJY18S-15NC CJY18S-15PA CJY18S-15PB CJY18S-15PC	CJY30S-17NA CJY30S-17NB CJY30S-17NC CJY30S-17PA CJY30S-17PB CJY30S-17PC	CJY30S-25NA CJY30S-25NB CJY30S-25NC CJY30S-25PA CJY30S-25PB CJY30S-25PC
检测距离 Sensing distance	1.5mm	3mm	4mm	7mm	10mm	15mm	17mm	25mm
应差距离 Hysteresis	检测距离的 10% 以下 Max. 10% of sensing distance							
标准检测物 Standard sensing target	8 × 8 × 1mm (铁 Iron)	8 × 8 × 1mm (铁 Iron)	12 × 12 × 1mm (铁 Iron)	25 × 25 × 1mm (铁 Iron)	20 × 20 × 1mm (铁 Iron)	40 × 40 × 1mm (铁 Iron)	45 × 45 × 1mm (铁 Iron)	75 × 75 × 1mm (铁 Iron)
设定距离 Setting distance	0~1.8mm	0~3.5mm	0~3.5mm	0~6.5mm	0~8.5mm	0~13.5mm	0~18.5mm	0~28.5mm
电源 (使用电压范围) Power supply (Operating voltage)	12-24VDC (10-30VDC)							
漏电流 Leakage current	10mA 以下 Max.10mA							
应答频率 (*1) Response frequency (*1)	450Hz	400Hz	400Hz	300Hz	300Hz	200Hz	100Hz	100Hz
残留电压 (*2) Residual voltage (*2)	1V 以下 Max. 1V							
温度的影响 Affection by Temp.	在 -25~+70℃ 温度范围内 +20℃ 时的检测距离的 ± 10% 以内 Max. ± 10% for sensing distance at ambient temperature 20℃							
控制输出 Control output	200mA 以下 Max. 200mA							
绝缘阻抗 Insulation resistance	50MΩ 以上 (500VDC 为基准) Min. 50MΩ (at 500VDC megger)							
耐电压 Dielectric strength	1500VAC 50/60Hz1 分钟 1500VAC 50/60Hz for 1minute							
耐振动 Vibration	10~55Hz(周期 1 分钟) 振幅 1mm X, Y, Z 各方向 2 小时 1mm amplitude at frequency of 10 to 55Hz(for 1 min.) in each of X, Y, Z directions for 2 hours							
耐冲击 Shock	500m/s ² (50G) X, Y, Z 各方向 3 次 500m/s ² (approx. 50G) X, Y, Z directions for 3 times							
显示灯 Indicator	动作指示灯 (红色 LED) Operation indicator(red LED)							
使用周围温度 Ambient temperature	-25~+70℃ (未结冰状态 No icing)							
储存温度 Storage temperature	-30~+80℃ (未结冰状态 No icing)							
使用周围湿度 Ambient humidity	35~95%RH (未结露状态 No condensation)							
保护电路 Protection circuit	内置浪涌保护, 电源反接保护, 过流保护电路 Surge protection circuit, Reverse polarity protection circuit, Overcurrent protection circuit							
材质 Material	外壳 / 螺母: 镀镍黄铜, 垫片: 镍镀铁, 检测面: PBT, 一般线缆 (灰色): 聚氯乙烯 (PVC), 耐油性线缆 (黑色): 聚氯乙烯 (耐油强化型 PVC) Case/Nut: Nickel plated Brass, Washer: Nickel plated Iron, Sensing surface: PBT, Standard cable(Gray): Polyvinyl chloride(PVC), Oil resistant cable(Black): Oil resistant Polyvinyl chloride(PVC)							
连接线缆 Cable	φ 2.8, 3P, 2m		φ 3.8, 3P,4P 2m		φ 4.8, 3P,4P 2m			
	(AWG22, 芯线直径 :0.1mm, 芯线数 :22, 绝缘皮外径 : φ 1.25mm) (AWG22, Core diameter: 0.1mm, Number of cores: 22, Insulator diameter: φ 1.25)		(AWG22, 芯线直径 :0.1mm, 芯线数 :25, 绝缘皮外径 : φ 1.25mm) (AWG22, Core diameter: 0.1mm, Number of cores: 25, Insulator diameter: φ 1.25)		(AWG22, 芯线直径 :0.1mm, 芯线数 :30, 绝缘皮外径 : φ 1.25mm) (AWG22, Core diameter: 0.1mm, Number of cores: 30, Insulator diameter: φ 1.25)			
防护等级 Protection	IP67							

(※1) 开关动作的应答频率为平均值。测定条件使用标准检测物, 检测物的间距为标准检测物的 2 倍, 设定距离为检测距离的 1/2。

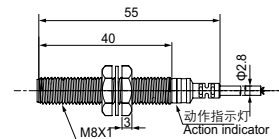
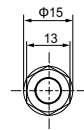
(※1): The response frequency is the average value. The standard sensing target is used and the width is set as 2 times of the standard sensing target, 1/2 of the sensing distance for the distance.

CJY□S 圆柱形远距离检测接近开关

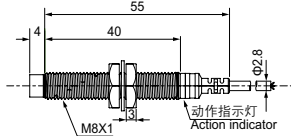
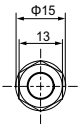
Long Distance Sensing Proximity Sensors (Cylindrical type)

外观和尺寸 Appearance and Dimension

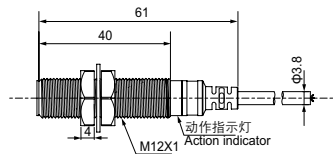
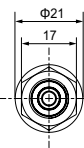
CJY08S-1.5



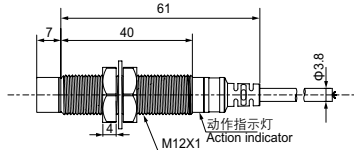
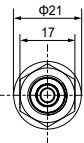
CJY08S-03



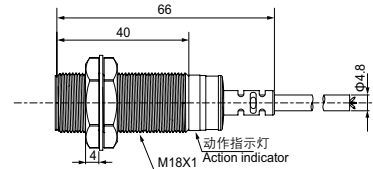
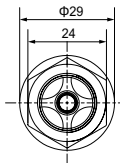
CJY12S-04



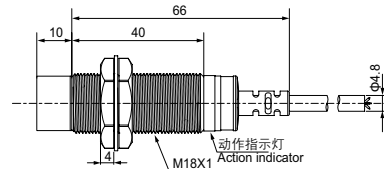
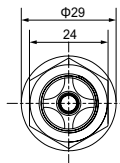
CJY12S-07



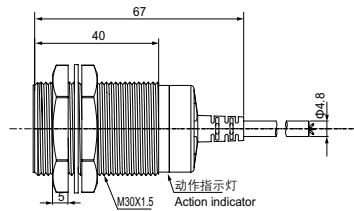
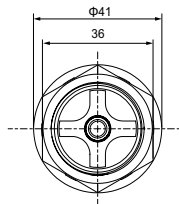
CJY18S-10



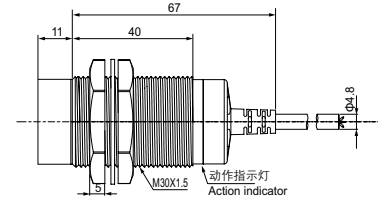
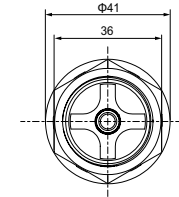
CJY18S-15



CJY30S-17



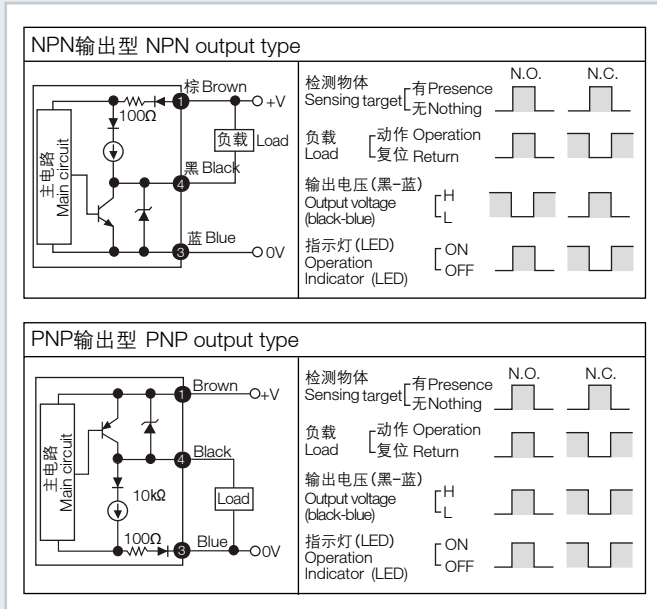
CJY30S-25



CJY□S 圆柱形远距离检测接近开关 Long Distance Sensing Proximity Sensors (Cylindrical type)

输出电路 Control Output Diagram

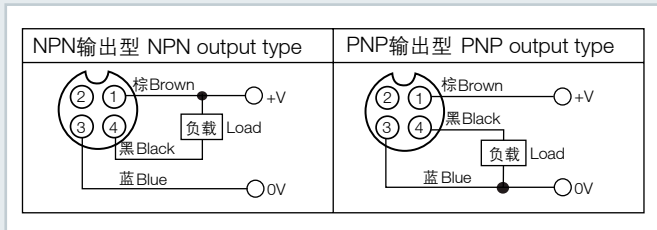
直流 3 线式 DC 3-wire type



※ 圈里面的数字是表示插头 (pin) 的编号
 ※ The number in a circle is pin no. of connector.

连接器接线图 Wiring Diagram

直流 3 线式 (标准型) DC 3-wire type (Standard type)

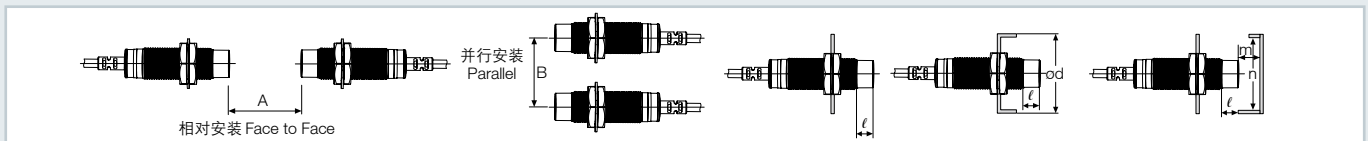


正确使用 Proper Usage

相互干扰 Mutual-interference

当把两个以上的接近开关一起安装使用时, 可能会发生相互干扰引起的误动作, 在安装时请务必满足下表中规定的尺寸要求进行安装。

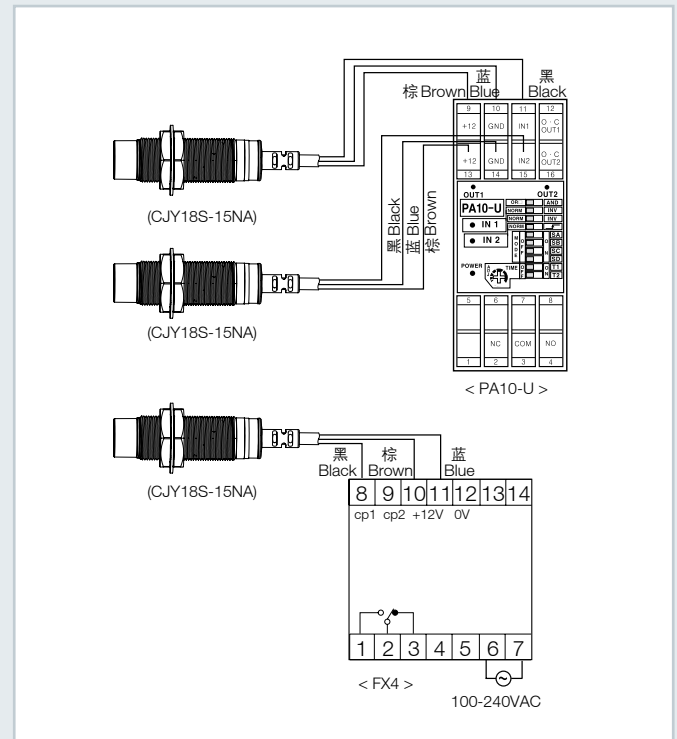
When several proximity sensors are mounted close to one another a malfunction of the sensor may be caused due to mutual interference. Therefore, be sure to provide a minimum distance between the two sensors as below chart indicates.



型号名 Model	CJY08S-1.5	CJY08S-03	CJY12S-04	CJY12S-07	CJY18S-10	CJY18S-15	CJY30S-17	CJY30S-25
项目 Item								
A	9	12	24	48	42	84	90	150
B	16	24	24	36	36	54	60	90
l	0	8	0	11	0	14	0	15
φ d	8	24	12	36	18	54	30	90
m	4.5	6	12	24	21	42	45	75
n	12	24	18	36	27	54	45	90

连接 Connections

直流 3 线式 DC 3-wire type



※ 结合插头时, 请使用 (0.39~0.49N·m 拧紧螺丝)。
 ※ 在发生震动的地方请用胶带缠住连接线缆后使用。
 ※ Please fasten the cleat of connector not to shown the thread. (0.39 to 0.49N.m)
 ※ Please fasten the vibration part with Teflon tape.

周围金属的影响 Influence by surrounding metals

当接近传感器周围有金属存在时, 为防止复位不正常等误差发生, 安装时请务必满足下表中规定的尺寸要求进行安装。

When sensors are mounted on metallic panel, you must prevent the sensors from being affected by any metallic object except target. Therefore, be sure to provide a minimum distance as below chart indicates.

CJY□S-T 圆柱形远距离接插型接近开关

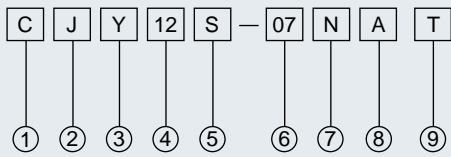
Long Distance Proximity Sensor Cylindrical Connector Type

特点 Features

- 可以实现远距离检测 (额定检测距离比原有产品提高 1.5 ~ 2 倍)
- 采用专用 IC 提高抗干扰能力
- 内置浪涌保护, 电源反接保护和过流保护电路
- 寿命长, 高可靠性, 操作简单, 经济实惠
- 红色 LED 状态指示灯, 易于识别运行状态
- IP65 防护等级 (IEC 规格)
- 可以代替微动开关或限位开关广泛使用
- Long sensing distance (1.5 to 2 times longer sensing distance guaranteed compared to existing models)
- Exclusively designed IC for improved the noise resistance
- Inside surge protection, reverse polarity protection, overcurrent protection
- Long use-life cycle and high reliability, easy install, economic price
- Red LED status indication, easy to confirm work situation
- Protection structure IP65(IEC standard)
- Replaceable for limit switches



型号说明 Model Number Structure



项目 Item	代号 Code	说明 Description
① 公司代号 Company code	C	公司代号 Company code
② 产品名称 Product name	J	电感式接近开关 Inductive proximity sensor
③ 外壳形状 Shape of shell	Y	圆柱形 Cylinder-shaped
④ 尺寸代码 Dimension code	12	12=M12
⑤ 产品类型 Product type	S	远距离型 Long-range type
⑥ 检测距离 Detection distance	07	07=7mm
⑦ 输出方式 Output mode	K	AC 二线 AC 2wires
	L	DC 二线 DC 2wires
	P	PNP 三线 PNP 3wires
	N	NPN 三线 NPN 3wires
⑧ 输出状态 Output state	A	常开 NO
	B	常闭 NC
	C	常开 + 常闭 NO+NC
⑨ 连接形式 Connection	无 Without	引线式 Without: Lead wire
	T	接插式 Plug-in
	R	配线引出接插式 Wiring leads Plug-in

CJY□S-T 圆柱形远距离接插型接近开关

Long Distance Proximity Sensor Cylindrical Connector Type

规格 Specifications

直流 3 线式 DC 3-wire type

型号名 Model	CJY12S-04NAT CJY12S-04NBT CJY12S-04NCT CJY12S-04PAT CJY12S-04PBT CJY12S-04PCT	CJY12S-07NAT CJY12S-07NBT CJY12S-07NCT CJY12S-07PAT CJY12S-07PBT CJY12S-07PCT	CJY18S-10NAT CJY18S-10NBT CJY18S-10NCT CJY18S-10PAT CJY18S-10PBT CJY18S-10PCT	CJY18S-15NAT CJY18S-15NBT CJY18S-15NCT CJY18S-15PAT CJY18S-15PBT CJY18S-15PCT	CJY30S-17NAT CJY30S-17NBT CJY30S-17NCT CJY30S-17PAT CJY30S-17PBT CJY30S-17PCT	CJY30S-25NAT CJY30S-25NBT CJY30S-25NCT CJY30S-25PAT CJY30S-25PBT CJY30S-25PCT
检测距离 Sensing distance	4mm	7mm	10mm	15mm	17mm	25mm
应差距离 Hysteresis	检测距离的 10% 以下 Max. 10% of sensing distance					
标准检测物 Standard sensing target	12 × 12 × 1mm (铁 Iron)	25 × 25 × 1mm (铁 Iron)	20 × 20 × 1mm (铁 Iron)	40 × 40 × 1mm (铁 Iron)	45 × 45 × 1mm (铁 Iron)	75 × 75 × 1mm (铁 Iron)
设定距离 Setting distance	0~2.8mm	0~5.6mm	0~4.9mm	0~9.8mm	0~10.5mm	0~17.5mm
电源 (使用电压范围) Power supply (Operating voltage)	12-24VDC (10-30VDC)					
漏电流 Leakage current	10mA 以下 Max.10mA					
应答频率 (※1) Response frequency (※1)	400Hz	300Hz	300Hz	200Hz	100Hz	100Hz
残留电压 Residual voltage	1V 以下 Max. 1V					
温度的影响 Affection by Temp.	在 -25~+70℃ 温度范围内 +20℃ 时的检测距离的 ±10% 以内 Max. ±10% for sensing distance at ambient temperature 20℃					
控制输出 Control output	200mA 以下 Max. 200mA					
绝缘阻抗 Insulation resistance	50MΩ 以上 (500VDC 为基准) Min. 50MΩ (at 500VDC megger)					
耐电压 Dielectric strength	1500VAC 50/60Hz1 分钟 1500VAC 50/60Hz for 1minute					
耐振动 Vibration	10~55Hz(周期 1 分钟) 振幅 1mm X, Y, Z 各方向 2 小时 1mm amplitude at frequency of 10 to 55Hz(for 1 min.) in each of X, Y, Z directions for 2 hours					
耐冲击 Shock	500m/s ² (50G) X, Y, Z 各方向 3 次 500m/s ² (approx. 50G) X, Y, Z directions for 3 times					
显示灯 Indicator	动作指示灯 (红色 LED) Operation indicator(red LED)					
使用周围温度 Ambient temperature	-25~+70℃ (未结冰状态 No icing)					
储存温度 Storage temperature	-30~+80℃ (未结冰状态 No icing)					
使用周围湿度 Ambient humidity	35~95%RH (未结露状态 No condensation)					
保护电路 Protection circuit	内置浪涌保护, 电源反接保护, 过流保护电路 Surge protection circuit, Reverse polarity protection circuit, Overcurrent protection circuit					
材质 Material	外壳 / 螺母: 镀镍黄铜, 垫片: 镀镍铁, 检测面: PBT Case/Nut: Nickel plated Brass, Washer: Nickel plated Iron, Sensing surface: PBT					
防护等级 Protection	IP65					

(※1) 开关动作的应答频率为平均值。测定条件使用标准检测物, 检测物的间距为标准检测物的 2 倍, 设定距离为检测距离的 1/2。

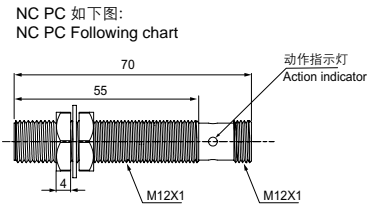
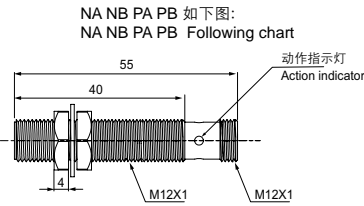
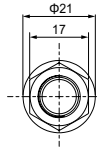
(※1) The response frequency is the average value. The standard sensing target is used and the width is set as 2 times of the standard sensing target, 1/2 of the sensing distance for the distance.

CJY□S-T 圆柱形远距离接插型接近开关

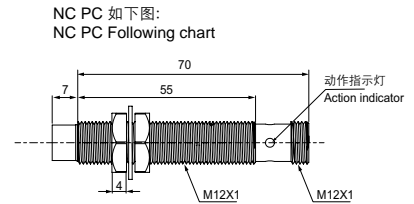
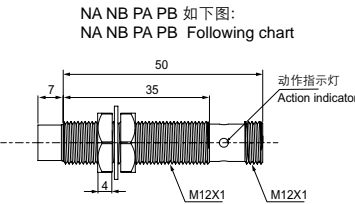
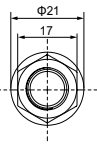
Long Distance Proximity Sensor Cylindrical Connector Type

外观和尺寸 Appearance and Dimension

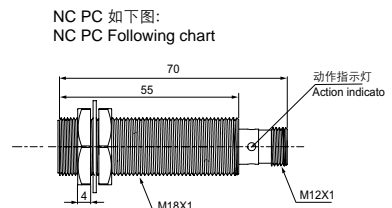
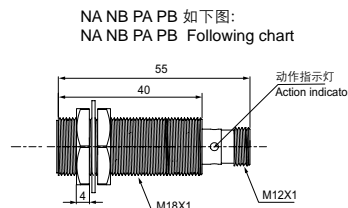
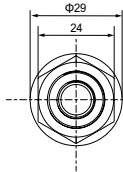
CJY12S-04T



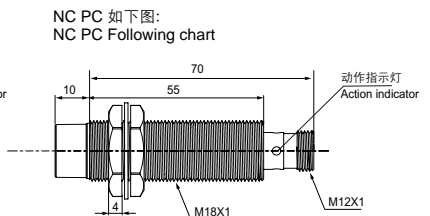
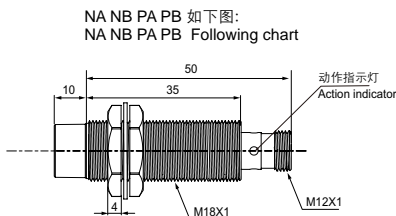
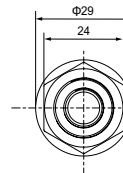
CJY12S-07T



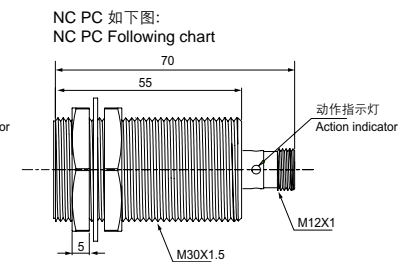
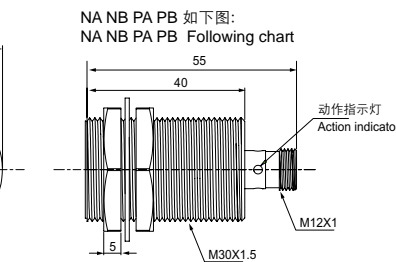
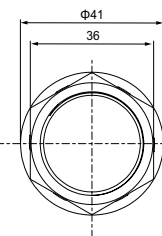
CJY18S-10T



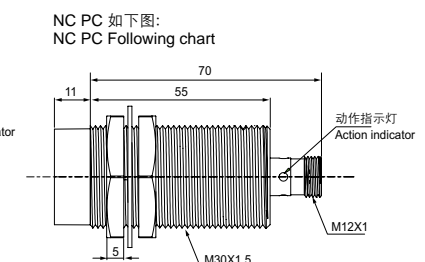
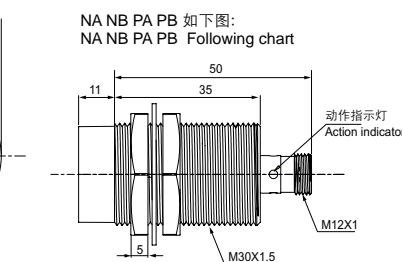
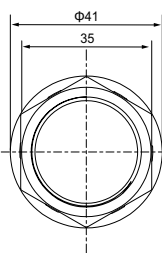
CJY18S-15T



CJY30S-17T



CJY30S-25T

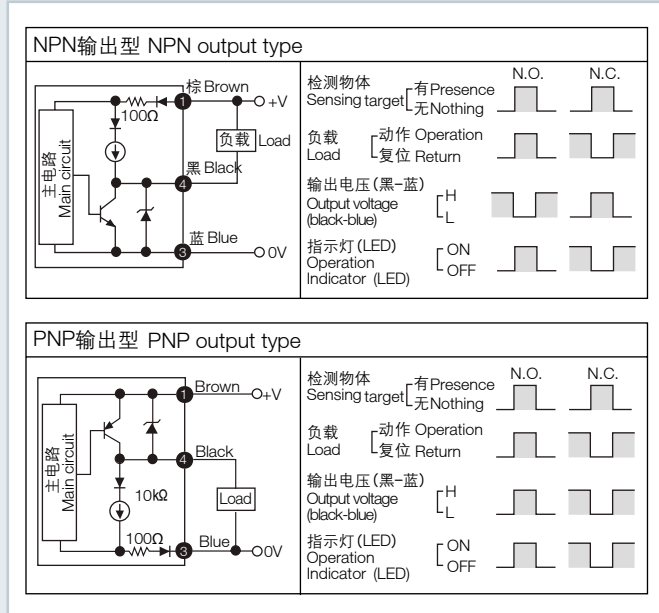


CJY□S-T 圆柱形远距离接插型接近开关

Long Distance Proximity Sensor Cylindrical Connector Type

输出电路 Control Output Diagram

直流 3 线式 DC 3-wire type



※ 圈里面的数字是表示插头 (pin) 的编号
 ※ The number in a circle is pin no. of connector.

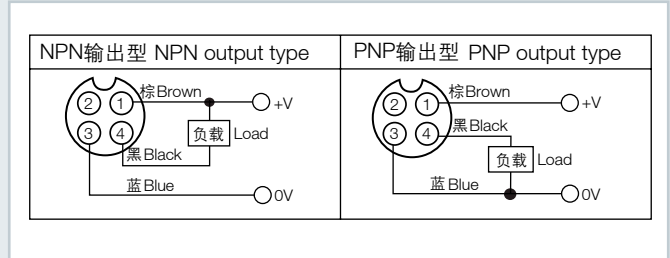
正确使用 Proper Usage

相互干扰 Mutual-interference

当把两个以上的接近开关一起安装使用时，可能会发生相互干扰引起的误动作，在安装时请务必满足下表中规定的尺寸要求进行安装。
 When several proximity sensors are mounted close to one another a malfunction of the sensor may be caused due to mutual interference. Therefore, be sure to provide a minimum distance between the two sensors as below chart indicates.

连接器接线图 Wiring Diagram

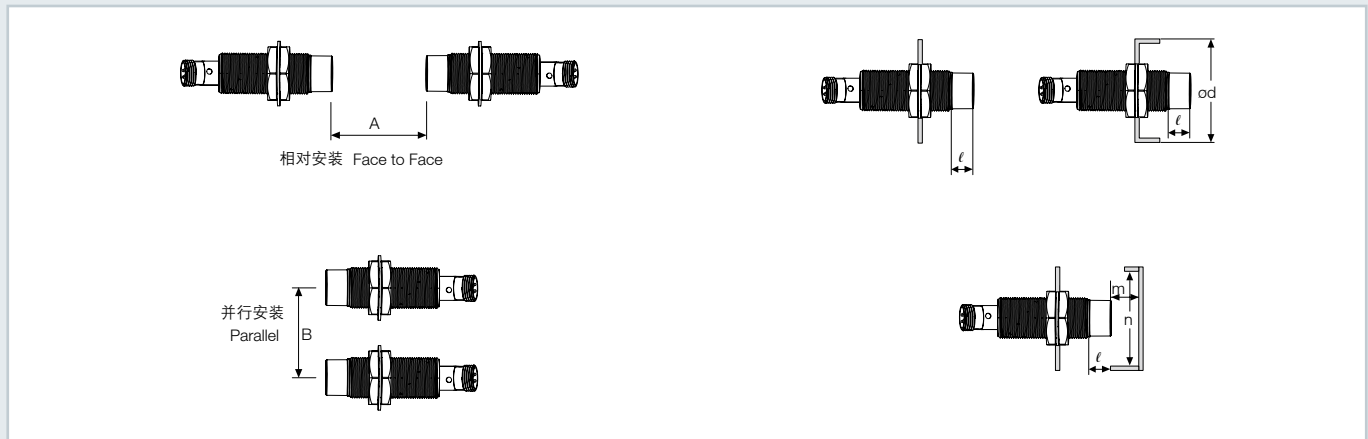
直流 3 线式 (标准型) DC 3-wire type (Standard type)



※ 结合接插头时，请使用 (0.39~0.49N·m 拧紧螺丝)。
 ※ 在发生震动的地方请用胶带缠住连接线缆后使用。
 ※ Please fasten the cleat of connector not to shown the thread. (0.39 to 0.49N.m)
 ※ Please fasten the vibration part with Teflon tape.

周围金属的影响 Influence by surrounding metals

当接近传感器周围有金属存在时，为防止复位不正常等误差发生，安装时请满足下表中规定的尺寸要求进行安装。
 When sensors are mounted on metallic panel, you must prevent the sensors from being affected by any metallic object except target. Therefore, be sure to provide a minimum distance as below chart indicates.



型号名 Model	CJY12S-04T	CJY12S-07T	CJY18S-10T	CJY18S-15T	CJY30S-17T	CJY30S-25T
项目 Item						
A	24	48	42	84	90	150
B	24	36	36	54	60	90
l	0	11	0	14	0	15
φ d	12	36	18	54	30	90
m	12	24	21	42	45	75
n	18	36	27	54	45	90

CJY□S-R 圆柱形远距离引线接插型接近开关

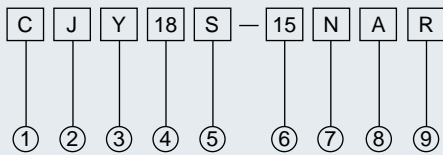
Long Distance Proximity Sensor Cylindrical Cable Connector Type



特点 Features

- 可以实现远距离检测 (额定检测距离比原有产品提高 1.5 ~ 2 倍)
 - 采用专用 IC 提高抗干扰能力
 - 内置浪涌保护, 电源反接保护和过流保护电路
 - 寿命长, 高可靠性, 操作简单, 经济实惠
 - 红色 LED 状态指示灯, 易于识别运行状态
 - IP67 防护等级 (IEC 规格)
 - 可以代替微动开关或限位开关广泛使用
- Long sensing distance (1.5 to 2 times longer sensing distance guaranteed compared to existing models)
 - Exclusively designed IC for improving anti-jamming capability
 - Inside surge protection, reverse polarity protection, overcurrent protection
 - Long use-life cycle and high reliability, easy install, economic price
 - Red LED status indication, easy to confirm work situation
 - Protection structure IP67(IEC standard)
 - Replaceable for limit switches

型号说明 Model Number Structure



项目 Item	代号 Code	说明 Description
① 公司代号 Company code	C	公司代号 Company code
② 产品名称 Product name	J	电感式接近开关 Inductive proximity sensor
③ 外壳形状 Shape of shell	Y	圆柱形 Cylinder-shaped
④ 尺寸代码 Dimension code	18	18=M18
⑤ 产品类型 Product type	S	远距离型 Long-range type
⑥ 检测距离 Detection distance	15	15=15mm
	K	AC 二线 AC 2wires
	L	DC 二线 DC 2wires
	P	PNP 三线 PNP 3wires
⑦ 输出方式 Output mode	N	NPN 三线 NPN 3wires
	A	常开 NO
	B	常闭 NC
⑧ 输出状态 Output state	C	常开 + 常闭 NO+NC
	无 Without	引线式 Without: Lead wire
	T	接插式 Plug-in
⑨ 连接形式 Connection	R	配线引出接插式 Wiring leads Plug-in

CJY□S-R 圆柱形远距离引线接插型接近开关

Long Distance Proximity Sensor Cylindrical Cable Connector Type

规格 Specifications

直流 3 线式 DC 3-wire type

型号名 Model	CJY12S-04NAR CJY12S-04NBR CJY12S-04NCR CJY12S-04PAR CJY12S-04PBR CJY12S-04PCR	CJY12S-07NAR CJY12S-07NBR CJY12S-07NCR CJY12S-07PAR CJY12S-07PBR CJY12S-07PCR	CJY18S-10NAR CJY18S-10NBR CJY18S-10NCR CJY18S-10PAR CJY18S-10PBR CJY18S-10PCR	CJY18S-15NAR CJY18S-15NBR CJY18S-15NCR CJY18S-15PAR CJY18S-15PBR CJY18S-15PCR	CJY30S-17NAR CJY30S-17NBR CJY30S-17NCR CJY30S-17PAR CJY30S-17PBR CJY30S-17PCR	CJY30S-25NAR CJY30S-25NBR CJY30S-25NCR CJY30S-25PAR CJY30S-25PBR CJY30S-25PCR
检测距离 Sensing distance	4mm	7mm	10mm	15mm	17mm	25mm
应差距离 Hysteresis	检测距离的 10% 以下 Max. 10% of sensing distance					
标准检测物 Standard sensing target	12 × 12 × 1mm (铁 Iron)	25 × 25 × 1mm (铁 Iron)	20 × 20 × 1mm (铁 Iron)	40 × 40 × 1mm (铁 Iron)	45 × 45 × 1mm (铁 Iron)	75 × 75 × 1mm (铁 Iron)
设定距离 Setting distance	0~2.8mm	0~5.6mm	0~4.9mm	0~9.8mm	0~10.5mm	0~17.5mm
电源 (使用电压范围) Power supply (Operating voltage)	12-24VDC (10-30VDC)					
漏电流 Leakage current	10mA 以下 Max. 10mA					
应答频率 (※1) Response frequency (※1)	400Hz	300Hz	300Hz	200Hz	100Hz	100Hz
残留电压 Residual voltage	1V 以下 Max. 1V					
温度的影响 Affection by Temp.	在 -25~+70℃ 温度范围内 +20℃ 时的检测距离的 ± 10% 以内 Max. ± 10% for sensing distance at ambient temperature 20℃					
控制输出 Control output	200mA 以下 Max. 200mA					
绝缘阻抗 Insulation resistance	50MΩ 以上 (500VDC 为基准) Min. 50MΩ (at 500VDC megger)					
耐电压 Dielectric strength	1500VAC 50/60Hz 1 分钟 1500VAC 50/60Hz for 1 minute					
耐振动 Vibration	10~55Hz (周期 1 分钟) 振幅 1mm X, Y, Z 各方向 2 小时 1mm amplitude at frequency of 10 to 55Hz (for 1 min.) in each of X, Y, Z directions for 2 hours					
耐冲击 Shock	500m/s ² (50G) X, Y, Z 各方向 3 次 500m/s ² (approx. 50G) X, Y, Z directions for 3 times					
显示灯 Indicator	动作指示灯 (红色 LED) Operation indicator (red LED)					
使用周围温度 Ambient temperature	-25~+70℃ (未结冰状态 No icing)					
储存温度 Storage temperature	-30~+80℃ (未结冰状态 No icing)					
使用周围湿度 Ambient humidity	35~95%RH (未结露状态 No condensation)					
保护电路 Protection circuit	内置浪涌保护, 电源反接保护, 过流保护电路 Surge protection circuit, Reverse polarity protection circuit, Overcurrent protection circuit					
材质 Material	外壳 / 螺母: 镀镍黄铜, 垫片: 镍镀锌, 检测面: PBT Case/Nut: Nickel plated Brass, Washer: Nickel plated Iron, Sensing surface: PBT					
连接线缆 Cable	φ 3.8, 3P,4P 300mm, M12 连接器 connector			φ 4.8, 3P,4P 300mm, M12 连接器 connector		
防护等级 Protection	IP67					

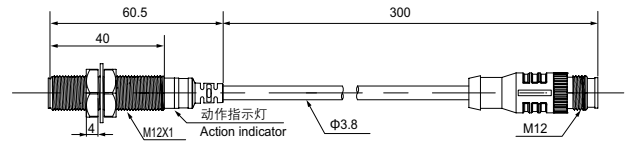
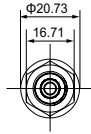
(※1) 开关动作的应答频率为平均值。测定条件使用标准检测物, 检测物的间距为标准检测物的 2 倍, 设定距离为检测距离的 1/2。

(※1) The response frequency is the average value. The standard sensing target is used and the width is set as 2 times of the standard sensing target, 1/2 of the sensing distance for the distance.

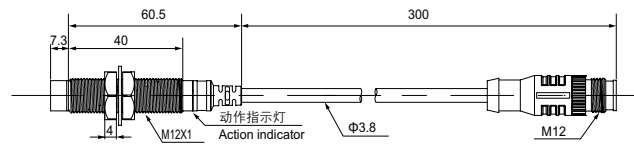
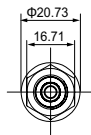
CJY□S-R 圆柱形远距离引线接插型接近开关
 Long Distance Proximity Sensor Cylindrical Cable Connector Type

外观和尺寸 Appearance and Dimension

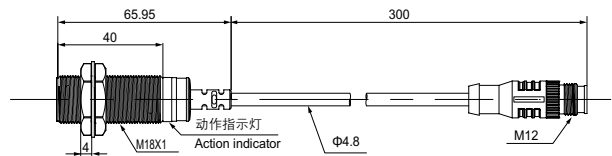
CJY12S-04R



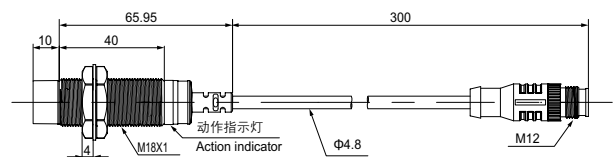
CJY12S-07R



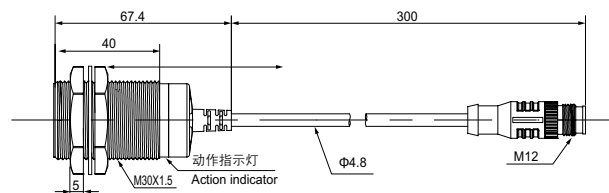
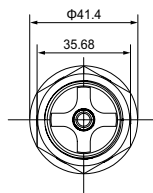
CJY18S-10R



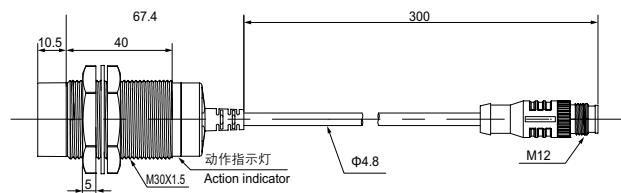
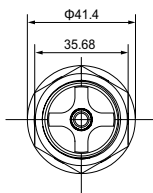
CJY18S-15R



CJY30S-17R



CJY30S-25R

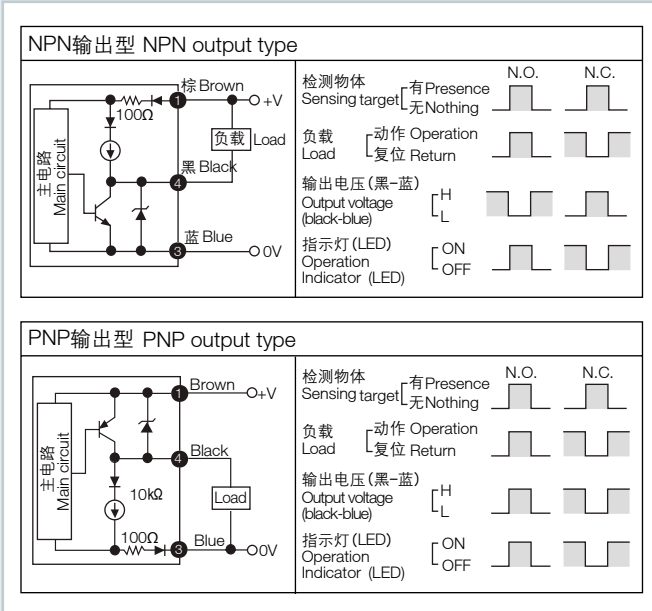


CJY□S-R 圆柱形远距离引线接插型接近开关

Long Distance Proximity Sensor Cylindrical Cable Connector Type

输出电路 Control Output Diagram

直流 3 线式 DC 3-wire type



※ 圈里面的数字是表示插头 (pin) 的编号
 ※ The number in a circle is pin no. of connector.

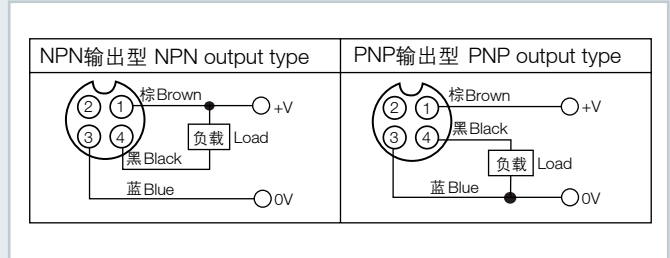
正确使用 Proper Usage

相互干扰 Mutual-interference

当把两个以上的接近开关一起安装使用时，可能会发生相互干扰引起的误动作，在安装时请务必满足下表中规定的尺寸要求进行安装。
 When several proximity sensors are mounted close to one another a malfunction of the sensor may be caused due to mutual interference. Therefore, be sure to provide a minimum distance between the two sensors as below chart indicates.

连接器接线图 Wiring Diagram

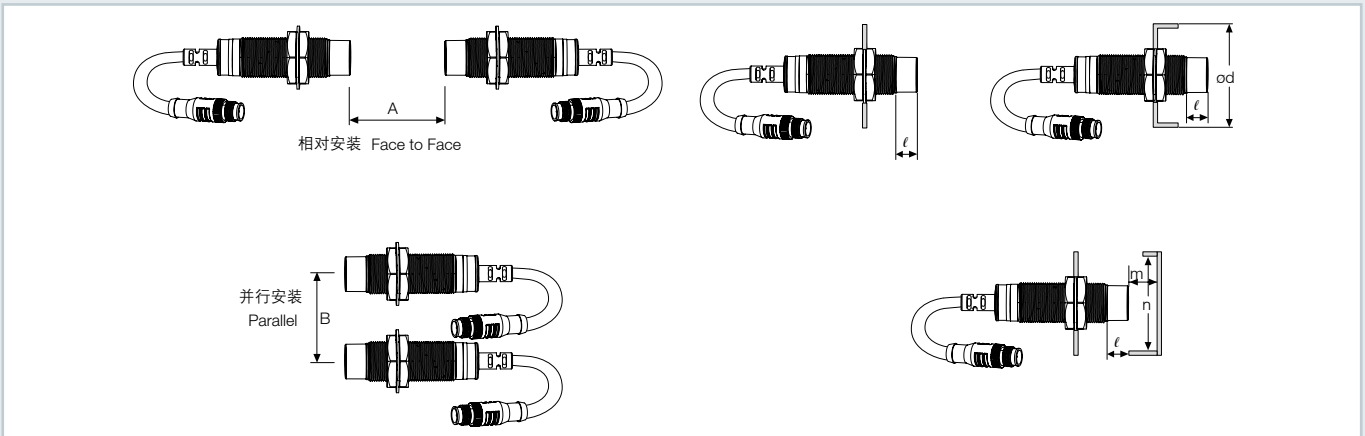
直流 3 线式 (标准型) DC 3-wire type (Standard type)



※ 结合插头时，请使用 (0.39~0.49N·m 拧紧螺丝)。
 ※ 在发生震动的地方请用胶带缠住连接线缆后使用。
 ※ Please fasten the cleat of connector not to shown the thread. (0.39 to 0.49N.m)
 ※ Please fasten the vibration part with Teflon tape.

周围金属的影响 Influence by surrounding metals

当接近传感器周围有金属存在时，为防止复位不正常等误差发生，安装时请满足下表中规定的尺寸要求进行安装。
 When sensors are mounted on metallic panel, you must prevent the sensors from being affected by any metallic object except target. Therefore, be sure to provide a minimum distance as below chart indicates.



型号名 Model	CJY12S-04R	CJY12S-07R	CJY18S-10R	CJY18S-15R	CJY30S-17R	CJY30S-25R
项目 Item						
A	24	48	42	84	90	150
B	24	36	36	54	60	90
l	0	11	0	14	0	15
φ d	12	36	18	54	30	90
m	12	24	21	42	45	75
n	18	36	27	54	45	90