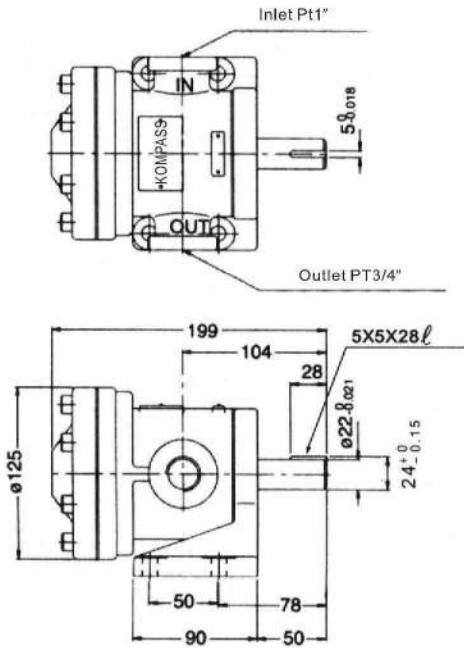


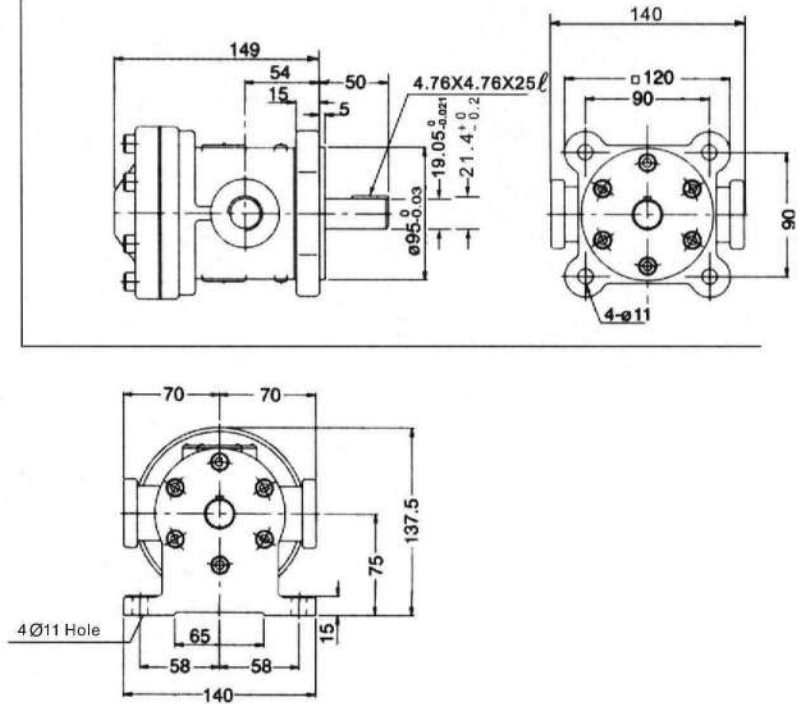
Dimensions

※ Note: 50T the shaft with $\phi 19.05$, $\phi 22$, standard flange type $\phi 19.05$, Foot type $\phi 22$

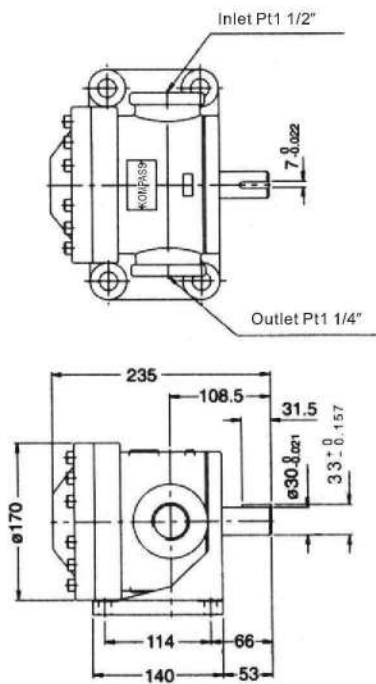
50T Foot type



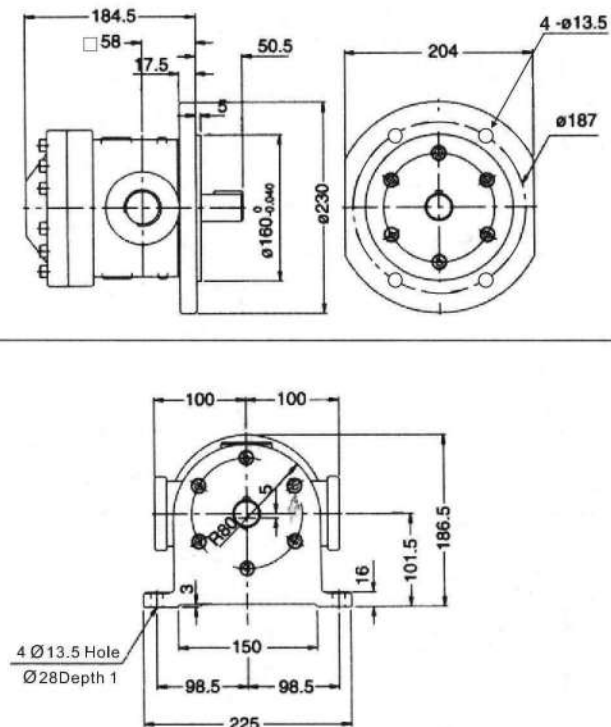
50T Flange type



150T Foot type



150T Flange type



FIXED DUAL DISPLACEMENT VANE PUMPS

50T+50T、150T+50T、150T+150T Series



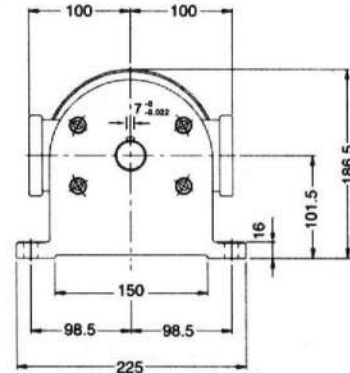
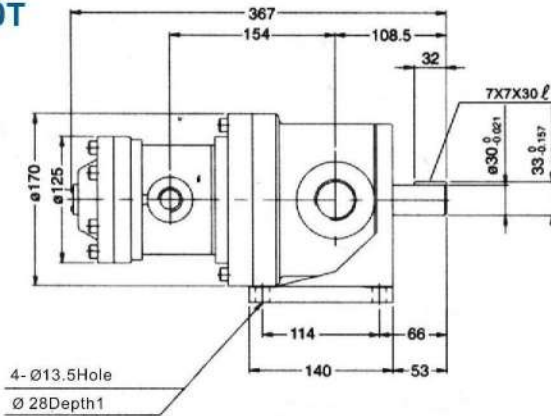
■ Feature:

1. This pump incorporate combination of two independent 50 T or 150T fixed displacement vane pumps which operated by same shaft and equipped with two outlets and inlets which may supply two different hydraulic systems with working fluid.
2. Fit for hydraulic system with two synchronous acting cylinders, e.g. Special-purpose processing machines, machine tools etc..

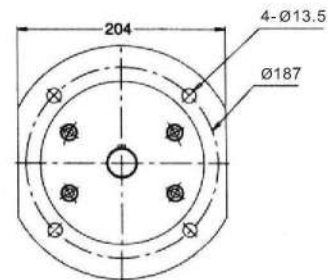
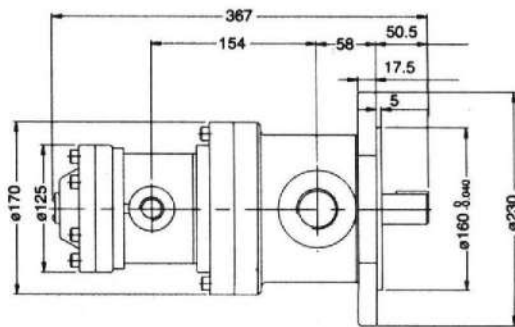
Dimensions

150T+50T

Foot type



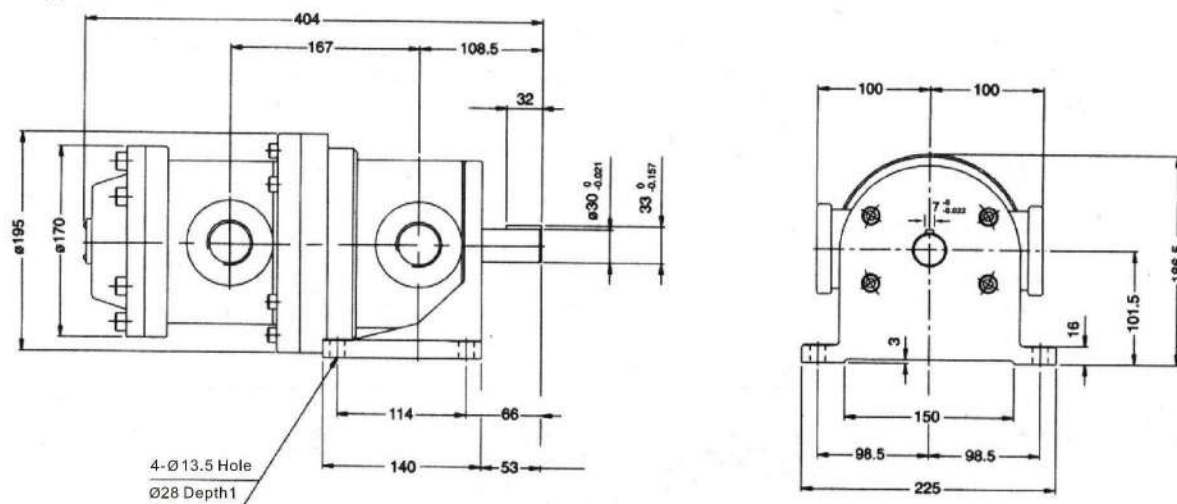
Flange type



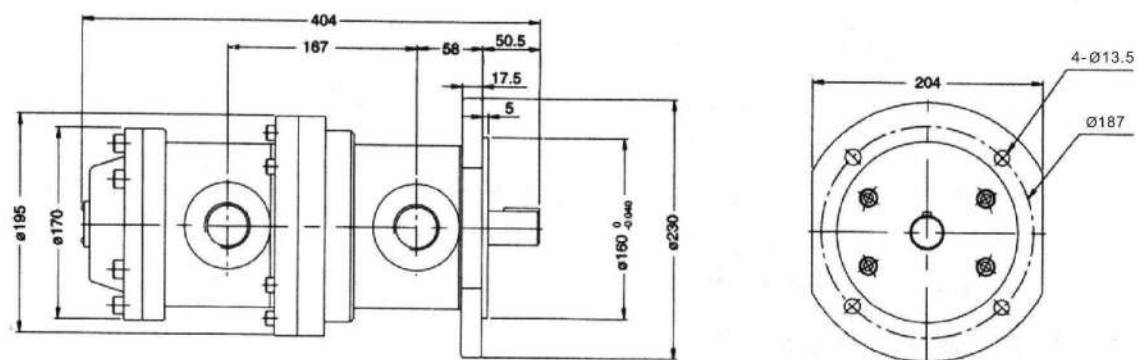
Dimensions

150T + 150T

Foot type



Flange type

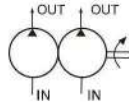


HI-LO PRESSURE PUMPS (FIXED DISPLACEMENT VANE PUMPS+ GEAR PUMPS OR FIXED DISPLACEMENT HI-PRESSIVE VANE PUMPS)



HI-LO PRESSURE PUMPS(FIXED DISPLACEMENT LANE PUMPS+ GEAR PUMPS OR FIXED DISPLACEMENT HI-PRESSURE VANE PUMPS)

50T+SL、150T+ST Series



油壓記號
SYMBOL

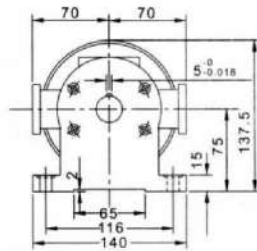
Feature:

This pump incorporate combination of fixed displacement vane pump with high flow low noise level and gear pump with high pressure, low flow (or high pressure fixed displacement vane pump) It results in horsepower efficiency that this pump is applied to hi-lo pressure pumps and operated by single electric motor.

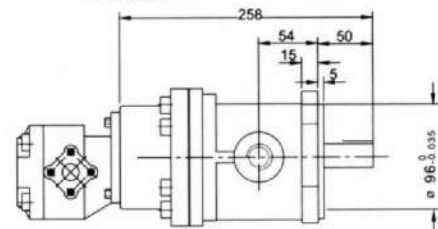
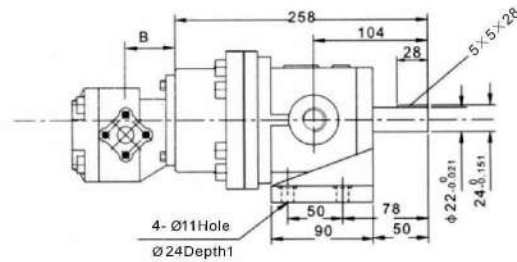
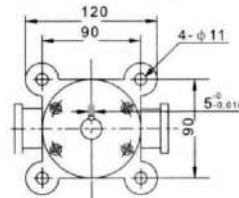
Dimensions

50T+SL(Gear pump)

Foot type



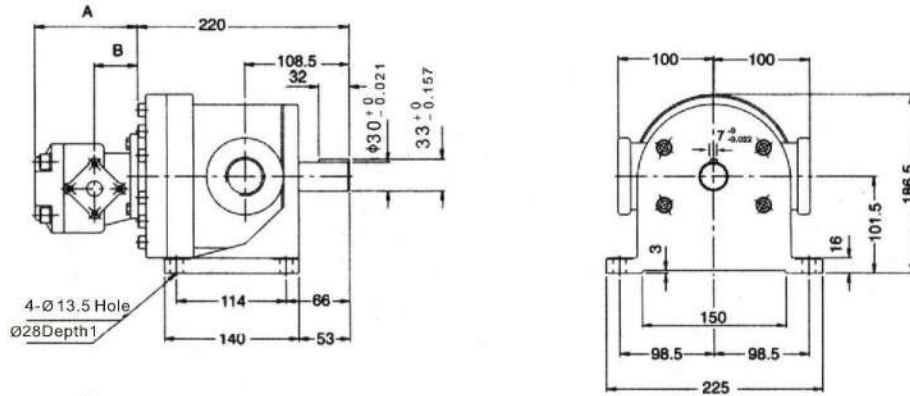
Flang type



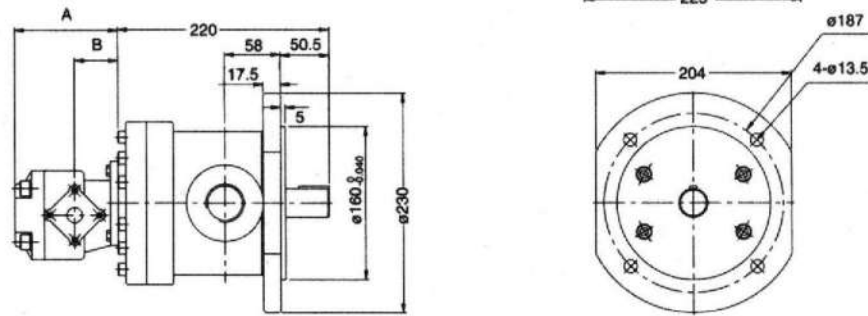
Dimensions

150+SL (Gear pump)

Foot type

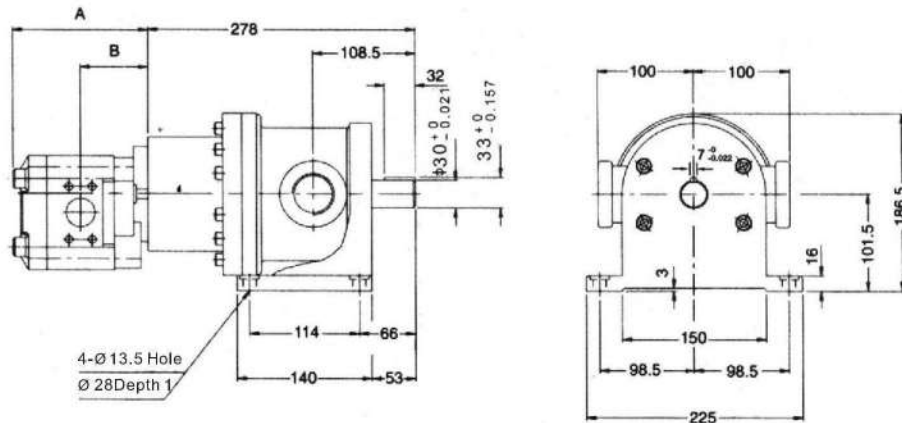


Flange type

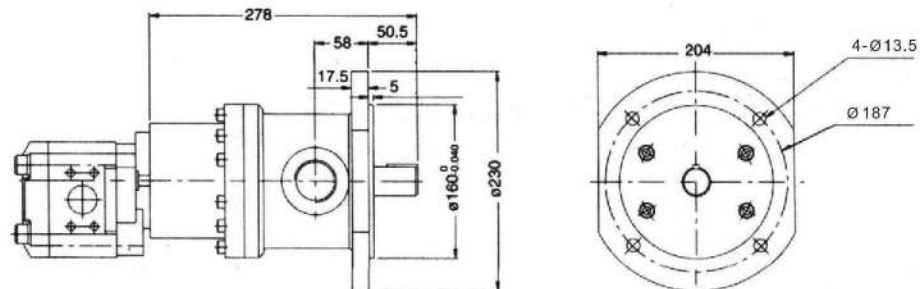


150+SL (Gear pump)

Foot type



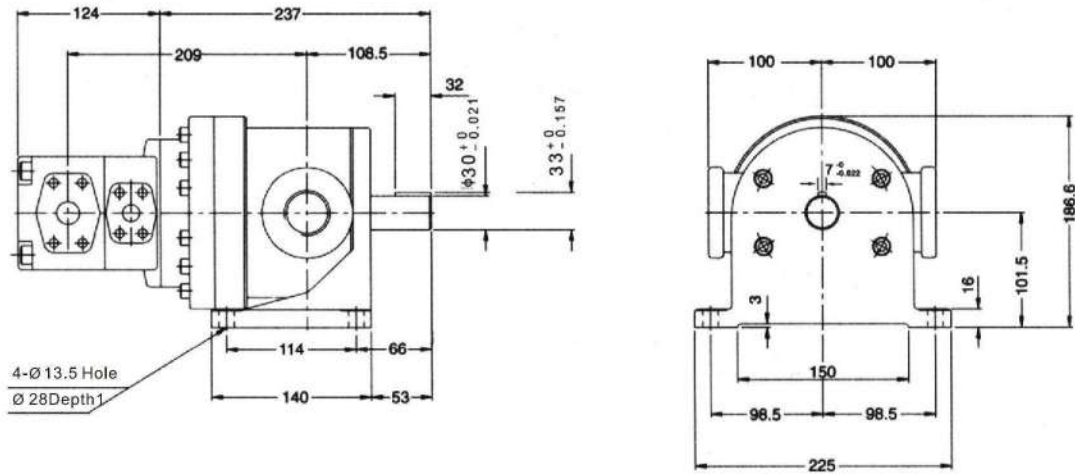
Flange type



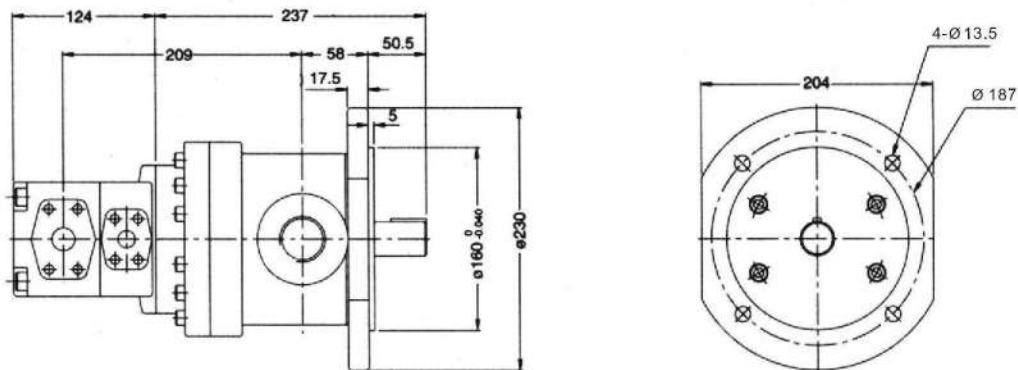
Dimensions

150T+SL(Hi-pressure fixed displacement vane pump)

Foot type

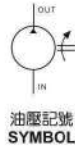


Flange type



FIXED DISPLACEMENT VANE PUMPS

FA1 Series

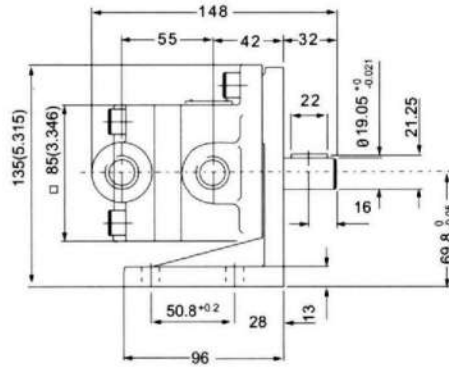
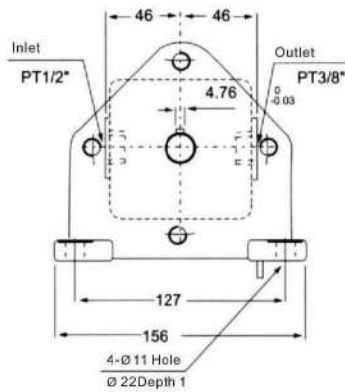


Feature:

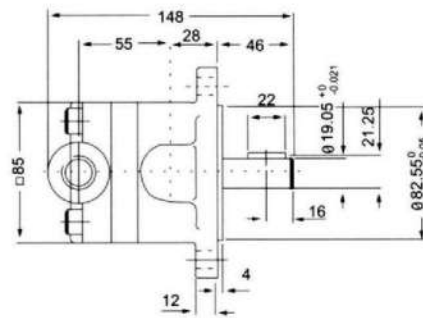
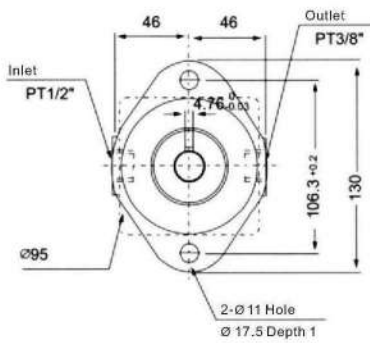
1. Light and compact designs are suitable for special-purpose machines requiring less installed spaces.
2. Stable pulse and high efficiency while adjusting pressure.
3. Simplified parts and structure are easy to maintain.

Dimensions

FA1 Foot type



Flange type



FIXED DISPLACEMENT VANE PUMPS

FB1 Series

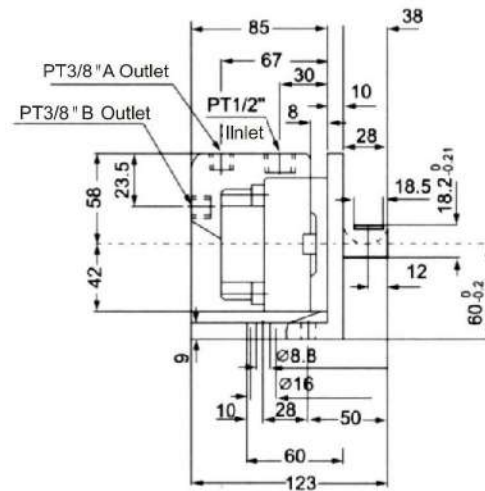
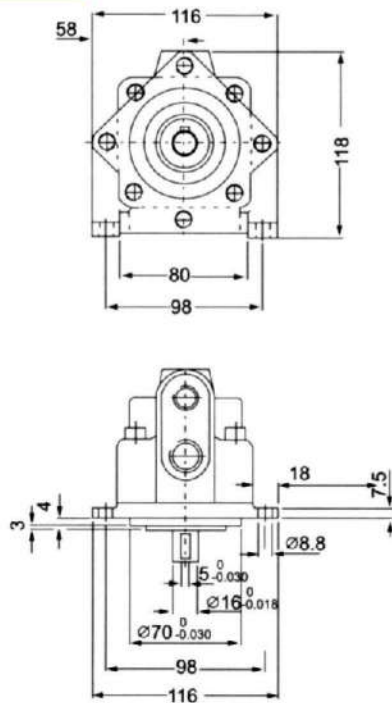


Feature:

1. Light and compact designs are suitable for special-purpose machines.
2. Stable pulse and high efficiency while adjusting pressure.
3. Low suction resistance and noise.
4. Optional 90° and 180° of inlet and outlet configurations are available.

Dimensions

FB1



FIXED DISPLACEMENT VANE PUMPS

PV2R1、PV2R2、PV2R3 Series

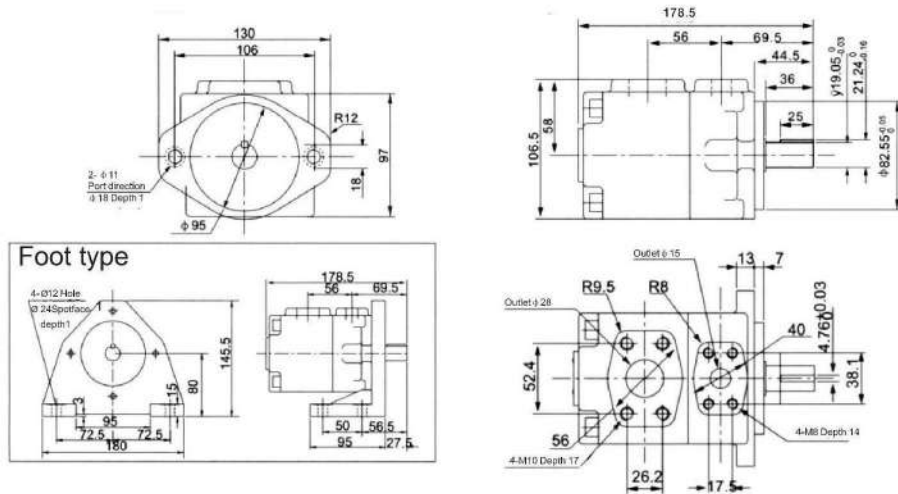


Feature:

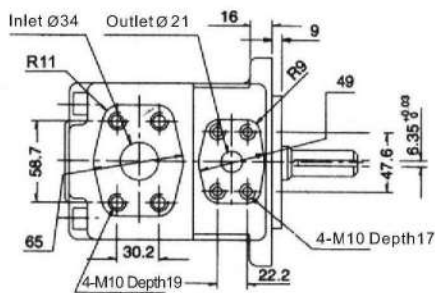
1. Special high pressure and low noise designs fit for multitude of applications, especially for rubber press, plastic injection molding machines and other industrial machines etc..
2. Cartridge is easy to assemble, disassemble to maintain and to change shaft rotations.

Dimensions

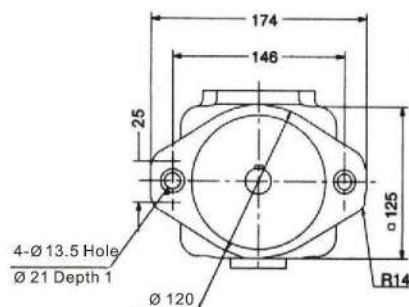
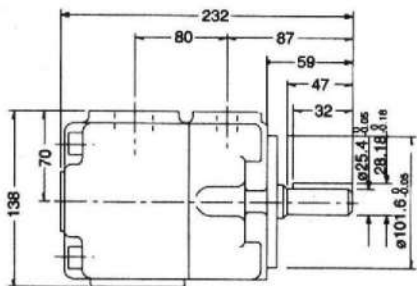
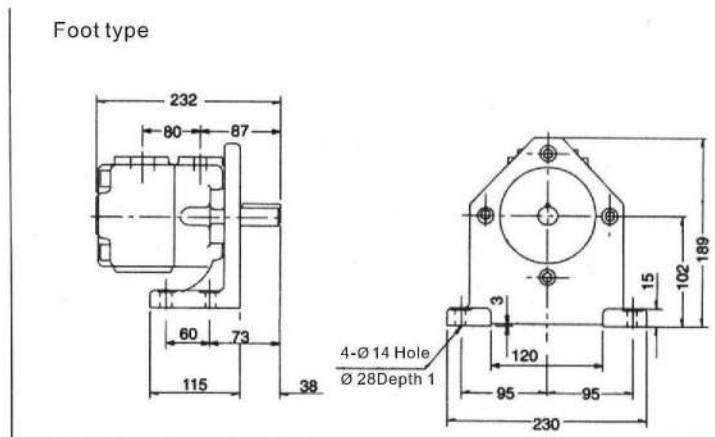
PV2R1 Flange type



PV2R2 Flang type

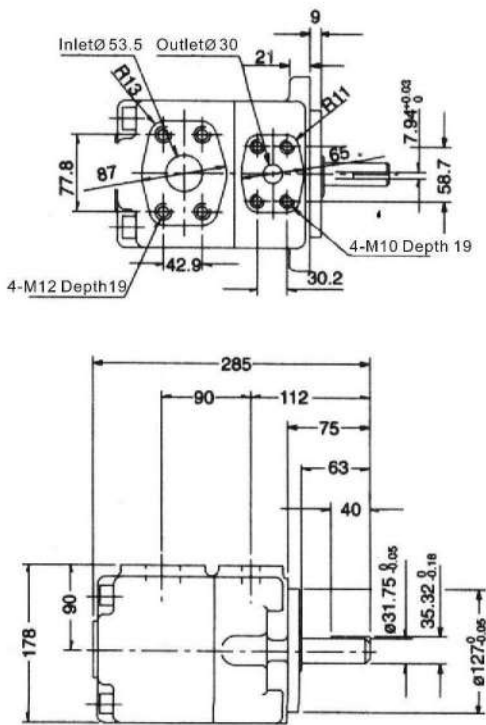


Foot type

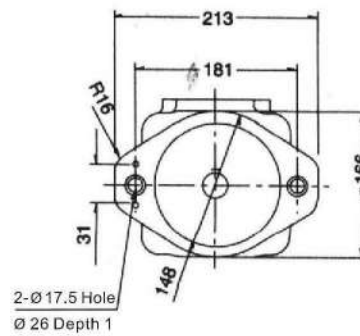
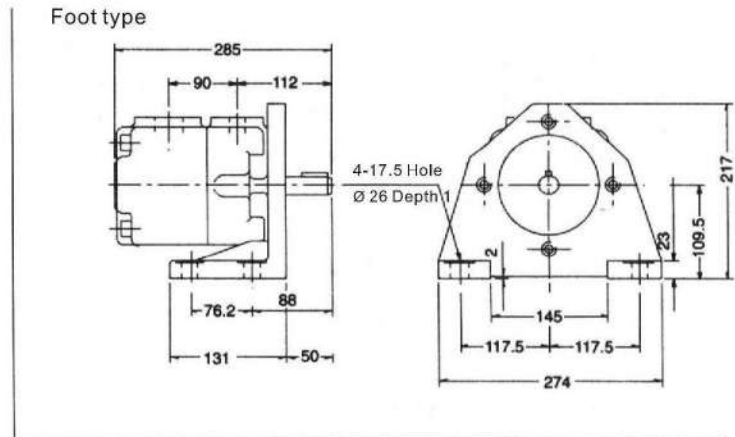


Dimensions

PV2R3 Flang type



Foot type



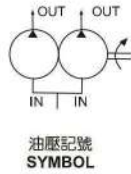
FIXED DUAL DISPLACEMENT VANE PUMPS



FIXED DUAL DISPLACEMENT VANE PUMPS

PV2R12、PV2R13 Series

- 規格修改・本公司不另行通知
- Specification is subjected to change without notice.

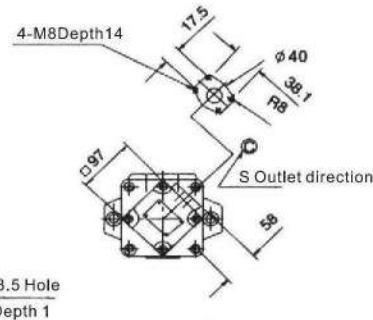
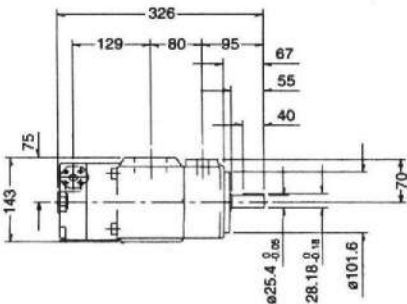
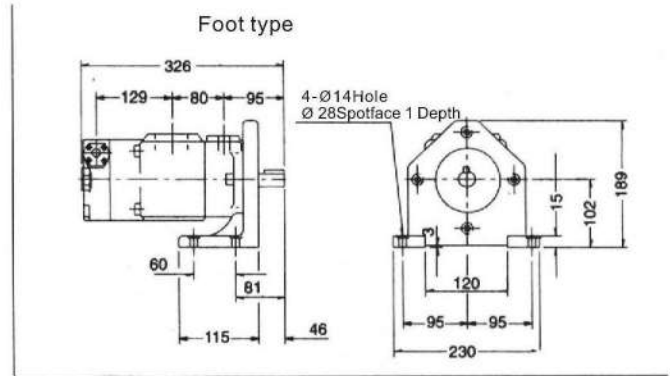
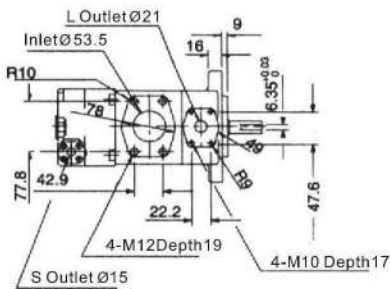


Feature:

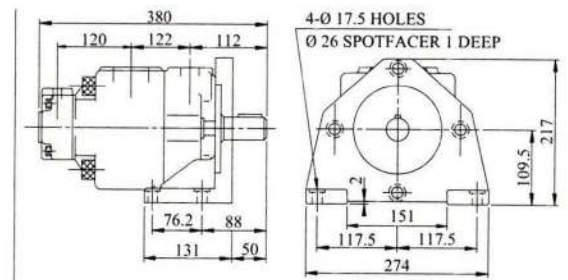
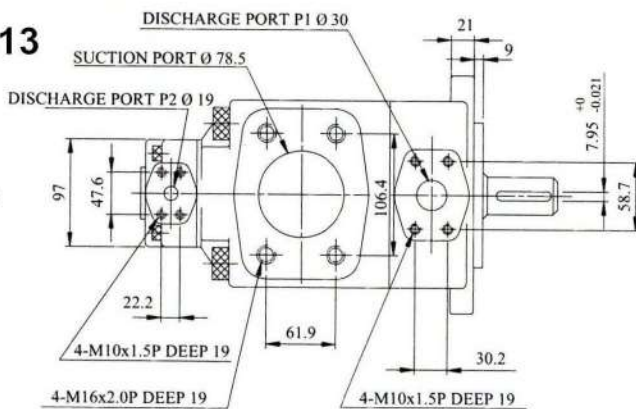
Combined two high pressure fixed displacement vane pumps are designed for hydraulic systems requiring two pressure sources at same operating period. Designs of two outlets with single inlet, and single shaft operation reduce spaces of pipping and motor's mounting.

Dimensions

PV2R12 Flange type

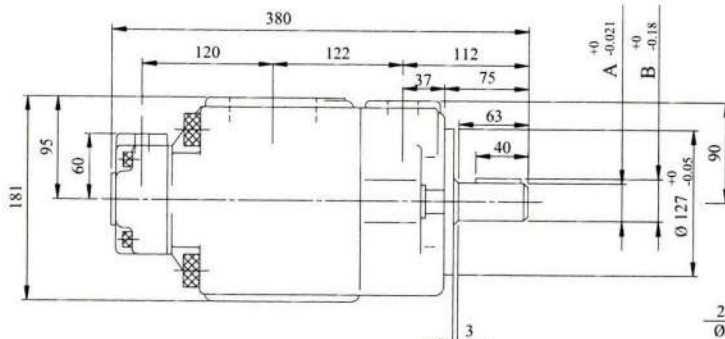


PV2R13

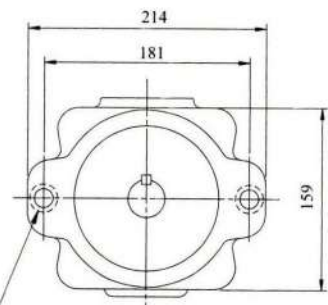


Foot Type (脚座型)

	A	B
NO.01-Shaft	Ø 31.75	35.32
NO.02-Shaft	Ø 34.9	38.56

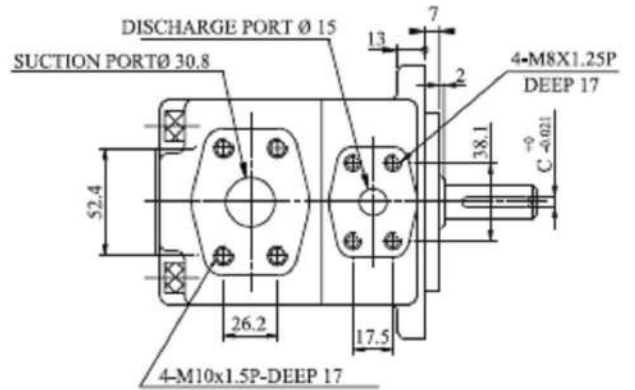
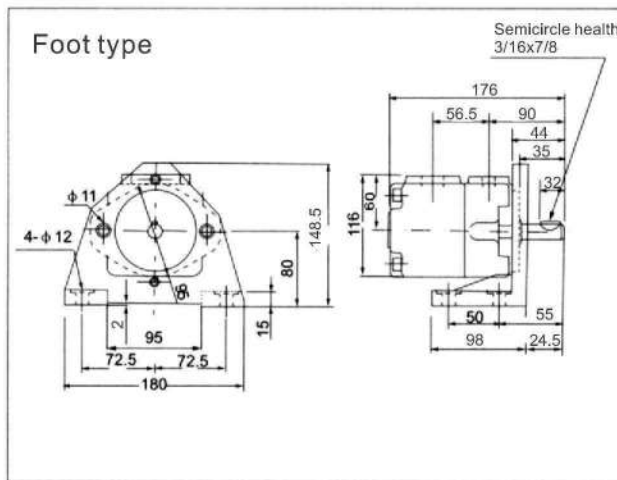
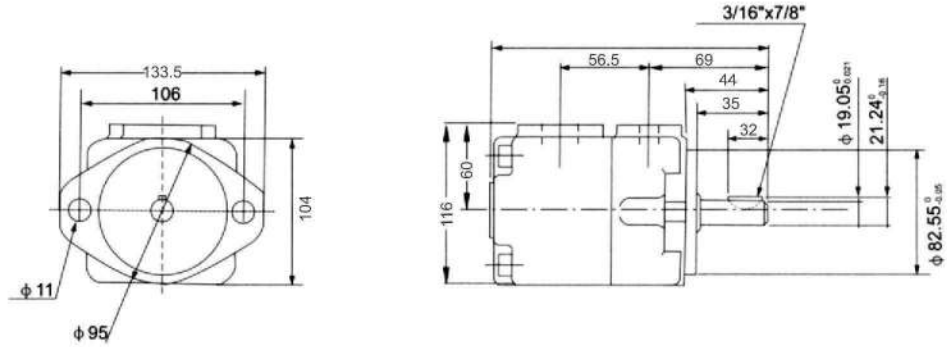


2-Ø 17.5 HOLES
Ø 26 SPOTFACE 1 DEEP

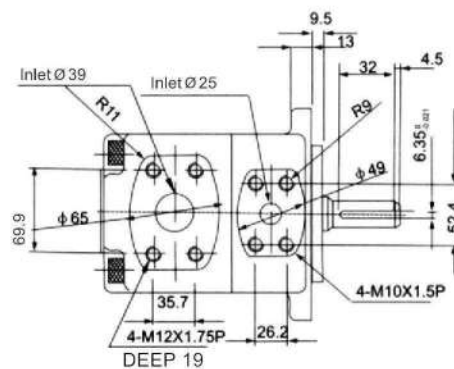
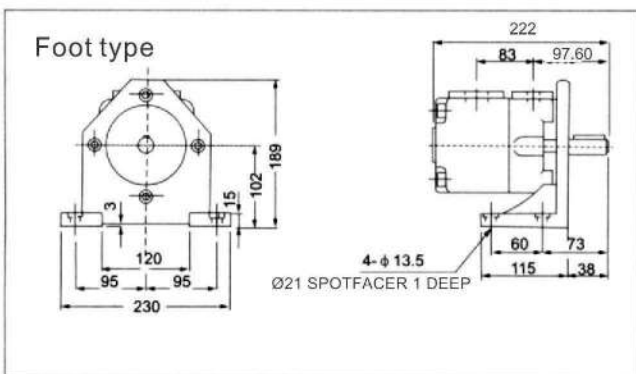
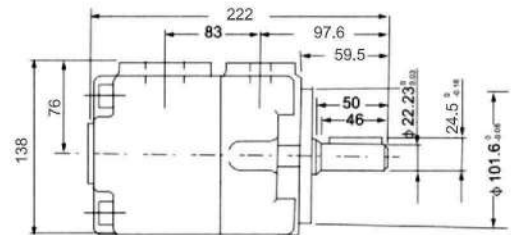
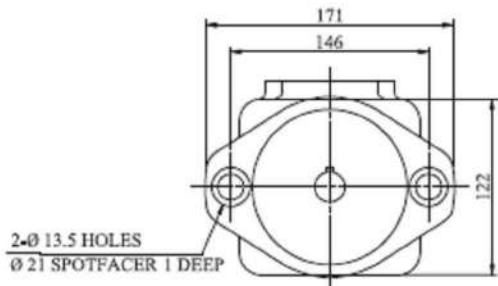


Dimensions

VQ15 Flance type

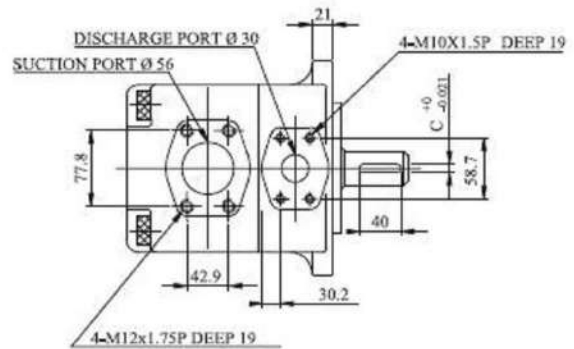
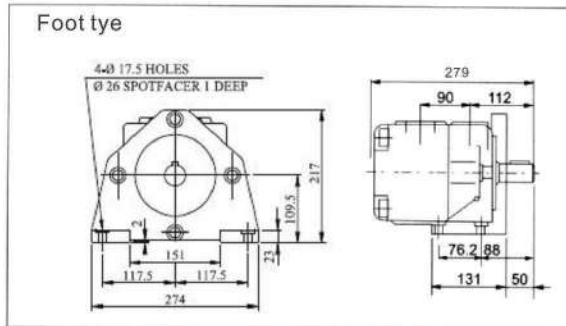
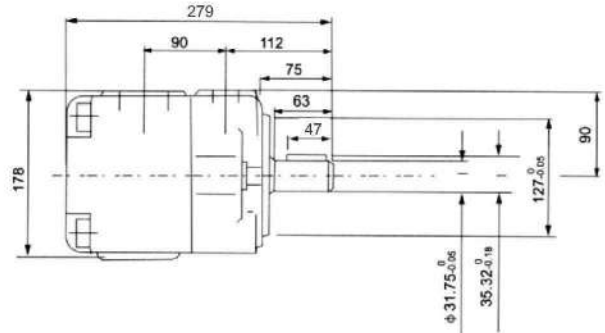
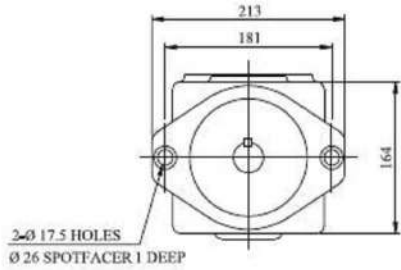


VQ25 Flance type

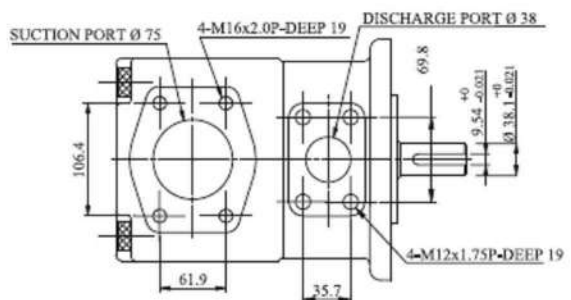
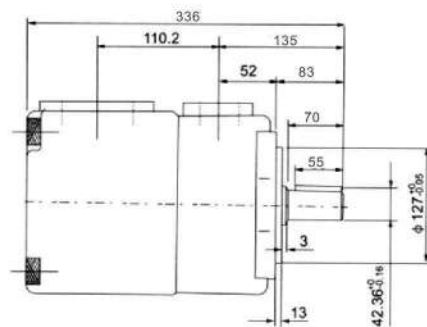
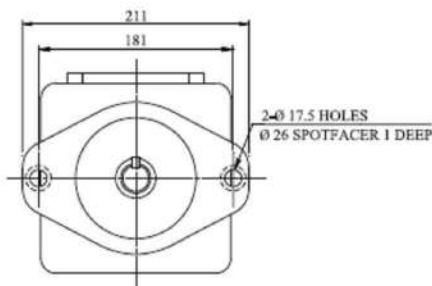


Dimensions

VQ35 Flance type



VQ45 Flance type



FIXED DISPLACEMENT VANE PUMPS

SVQ. 25. 35. 45 Series



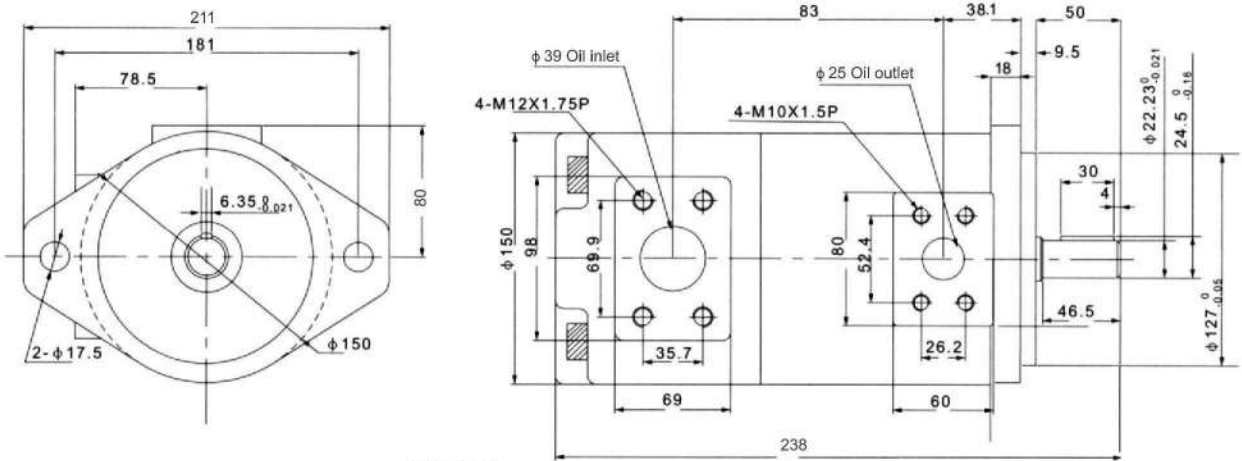
Feature:

1. Special high pressure and low noise designs fit for multitude of applications, especially for rubber press, plastic injection molding machines and other industrial machines.
2. Cartridge is easy to assemble and disassemble to maintain and to change shaft rotations.
3. Flange mounting can be interchangeable with vickers products (but not include internal parts' and cartridges).

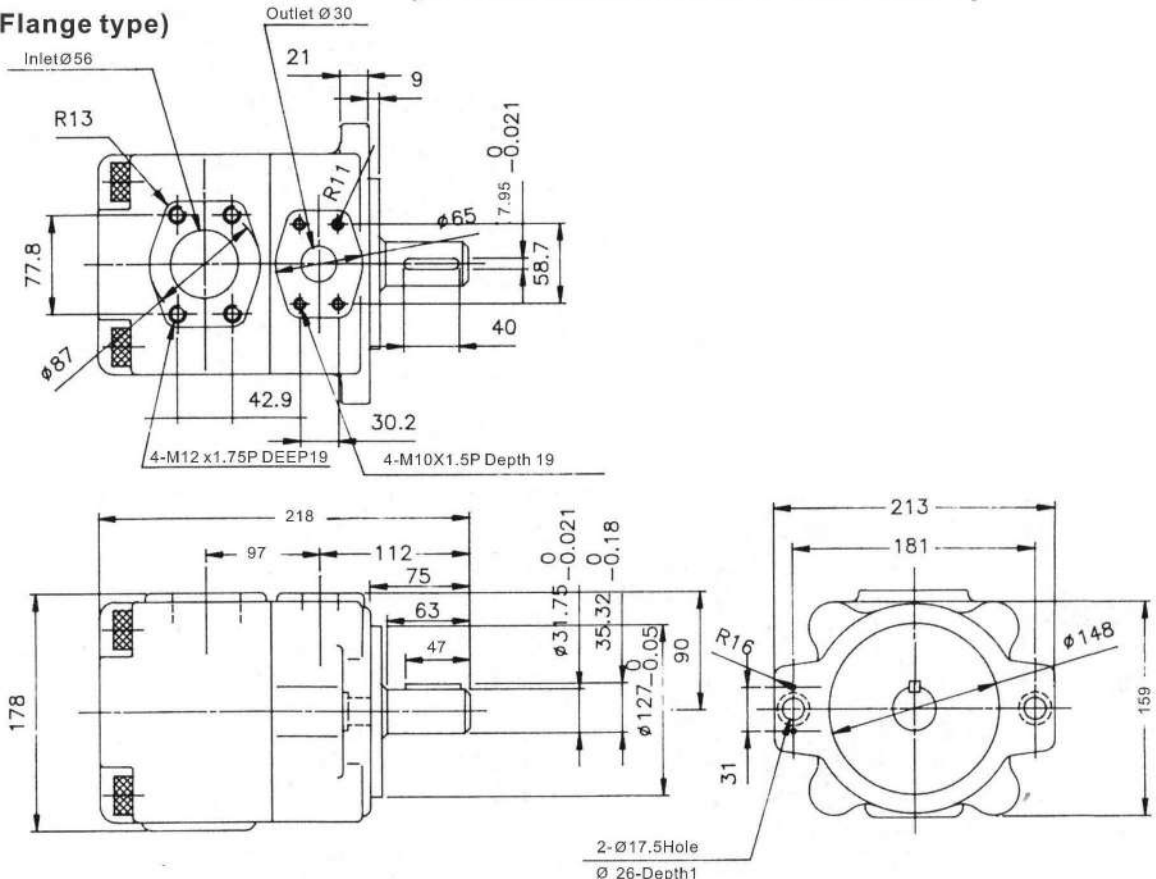
- 規格修改，本公司不另行通知
- Specification is subjected to change without notice.

Dimensions

SVQ25(Flnage type)

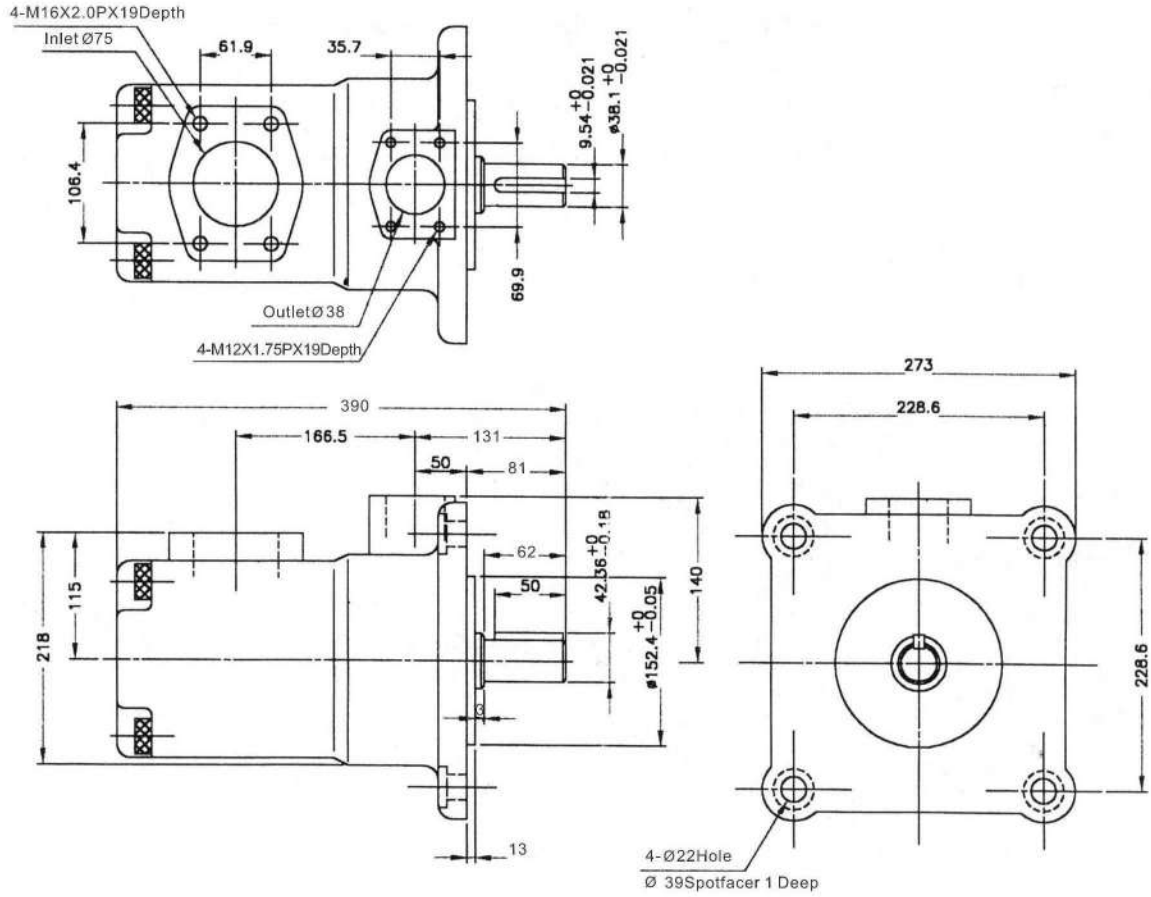


SVQ35 (Flange type)



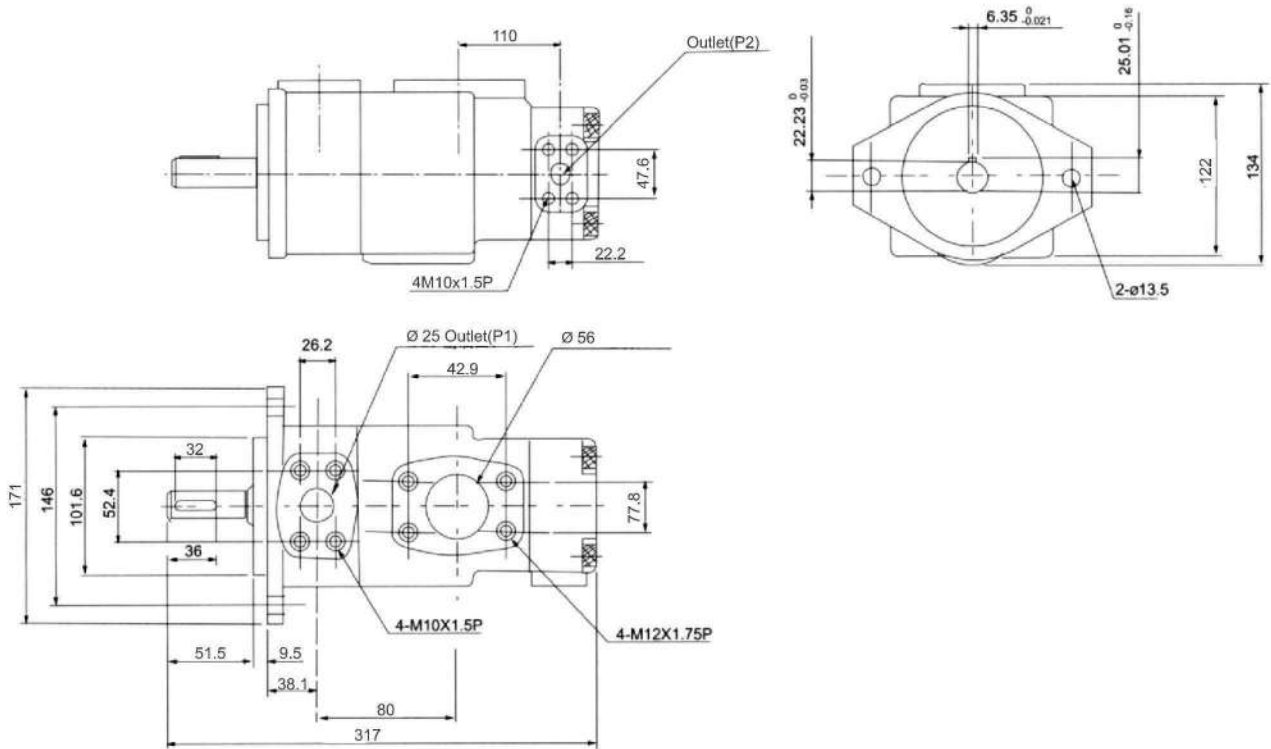
Dimensions

SVQ45(Flange type)

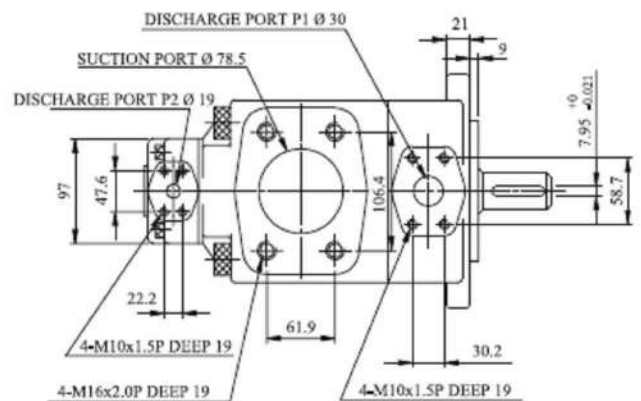
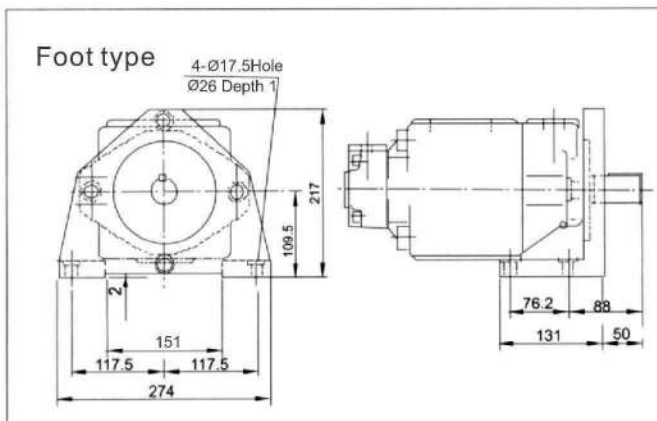
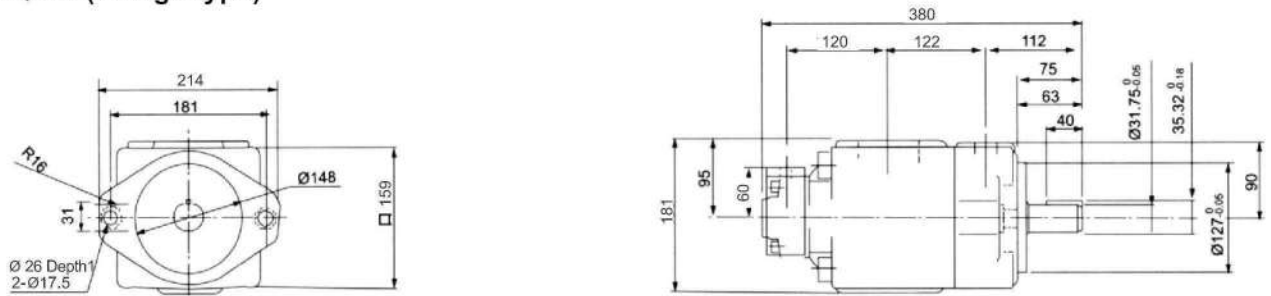


Dimensions

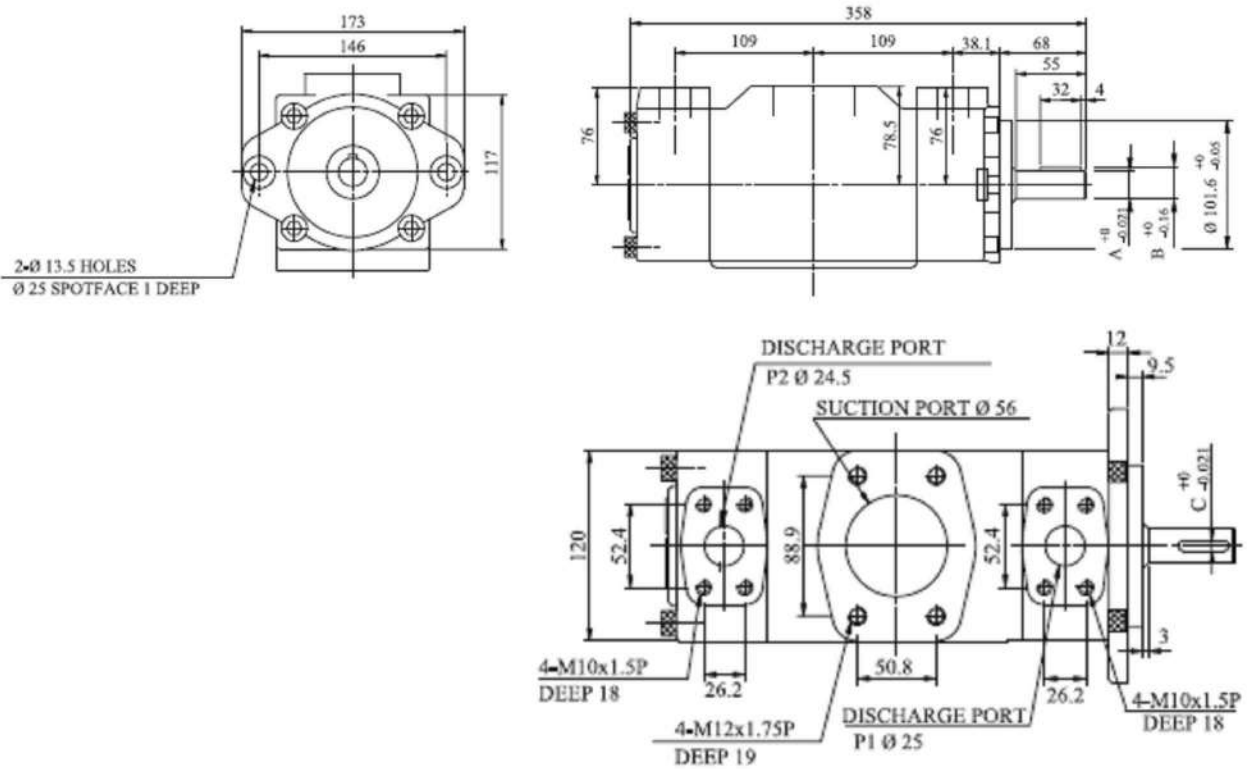
VQ215 (Flange type)



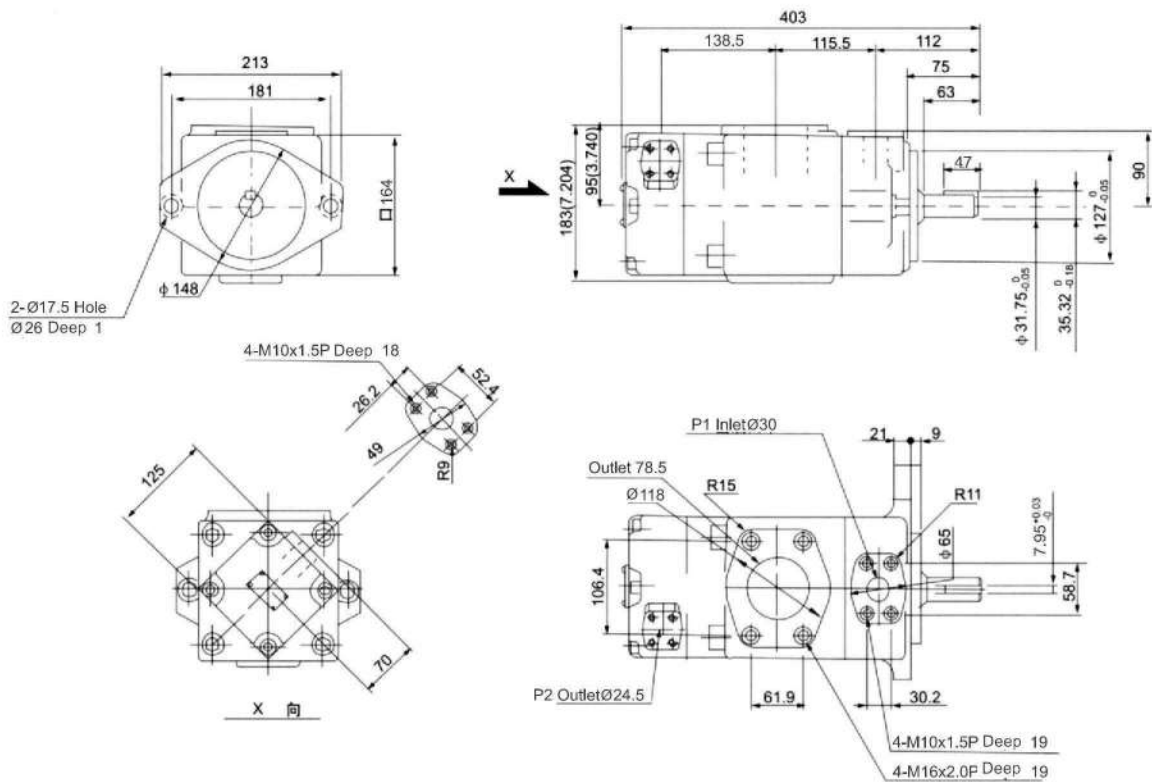
SVQ315 (Flange type)



VQ225 (Flange type)

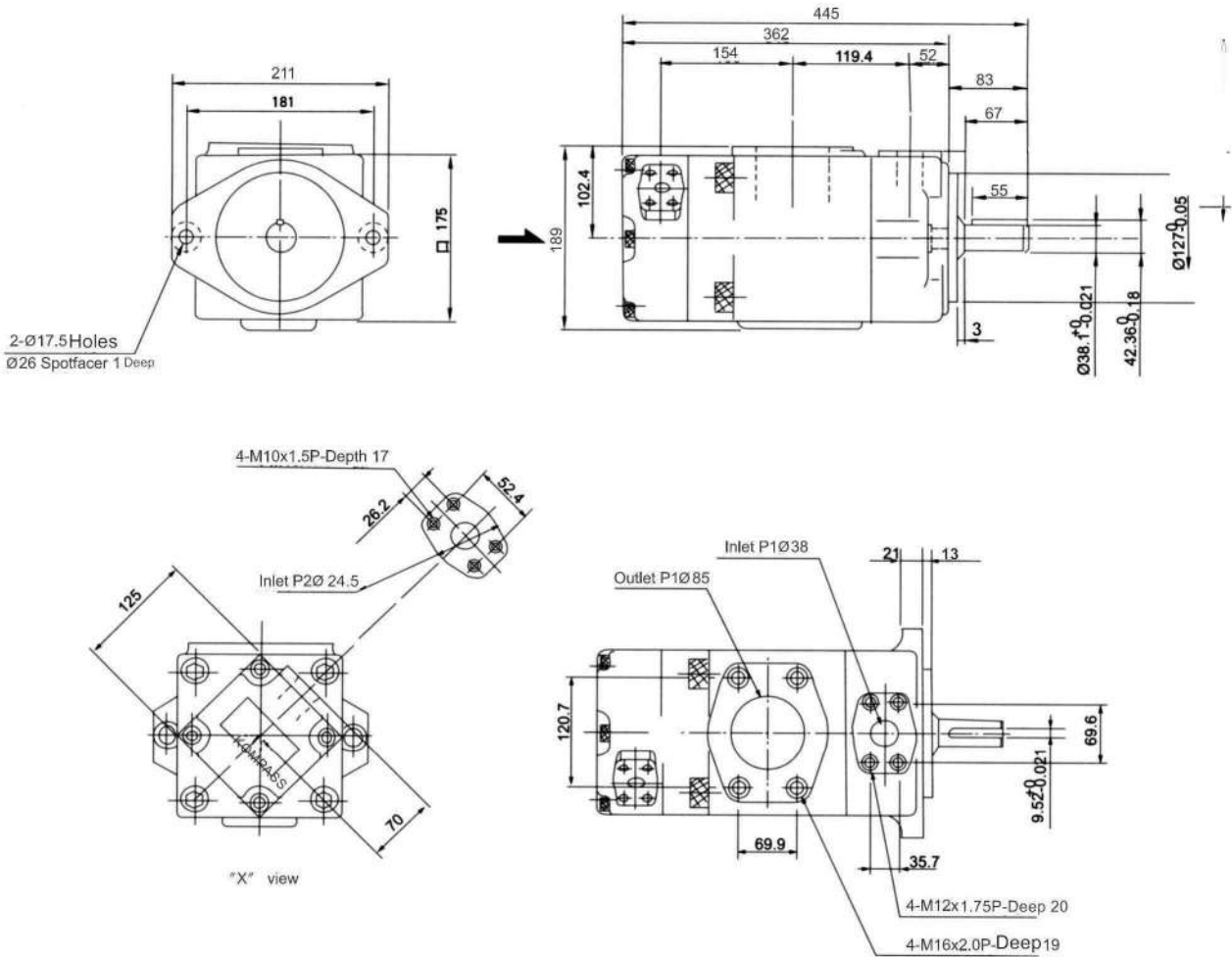


VQ325 (Flange type)

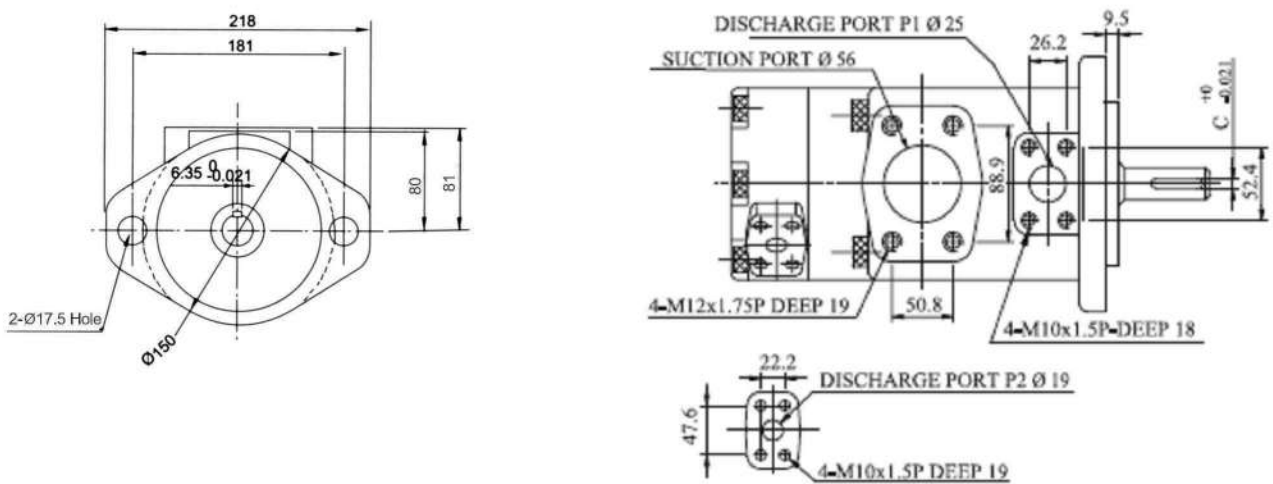


Dimensions

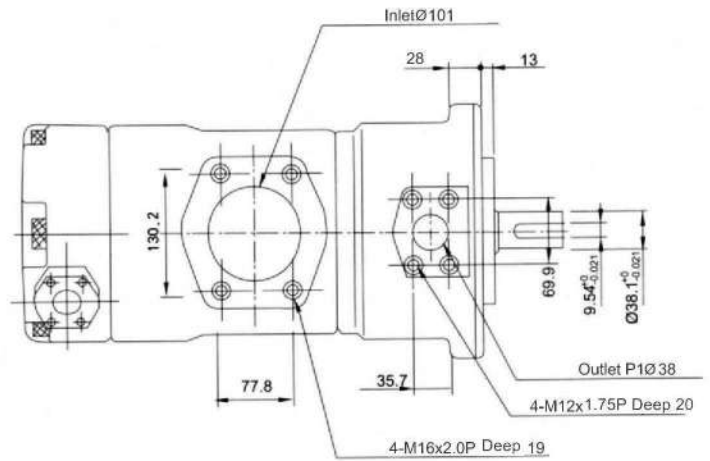
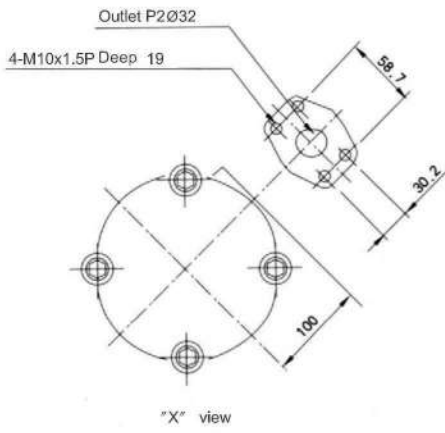
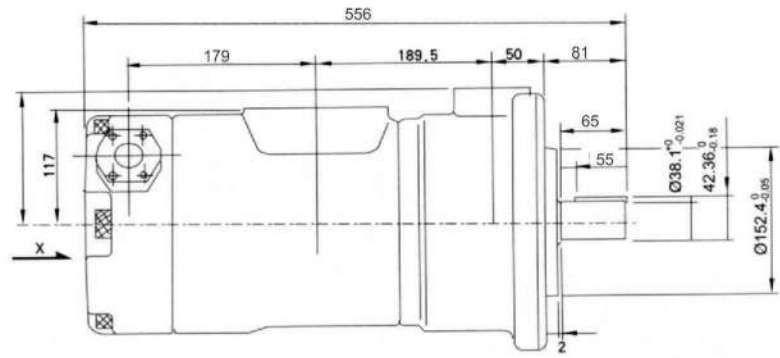
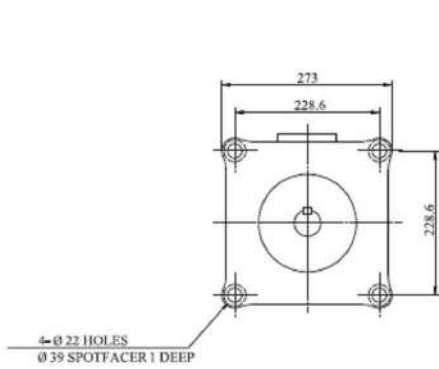
VQ425 (Flange type)



SVQ215 (Flange type)



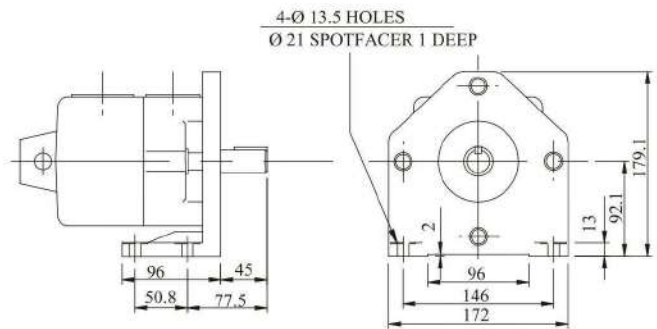
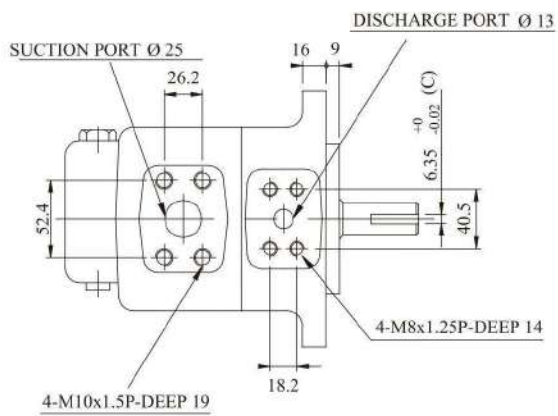
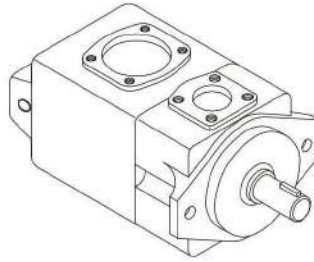
SVQ435 (Flange type)



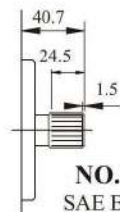
HVQ Series Single Pump Dimensional Drawing

HVQ 系列單泵外型尺寸圖

HVQ20



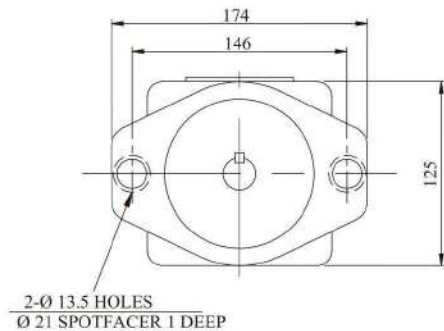
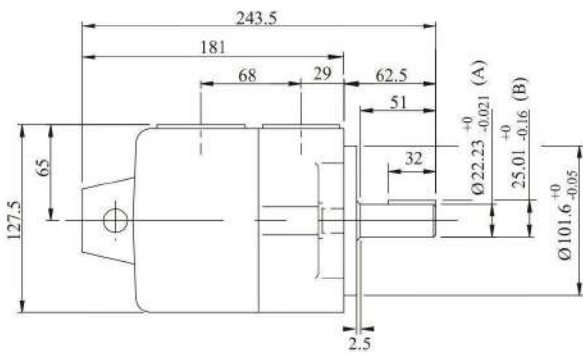
Foot Type (腳座型)



NO.3 Shaft

SAE B-B splined shaft
 Class 1-J498 b 16/32 d.p.
 -13 teeth 30° pressure
 angle flat root side fit

	A	B	C
N0.01-Shaft	$\varnothing 22.23$	25.01	6.35
N0.03-Shaft	Spline Shaft		

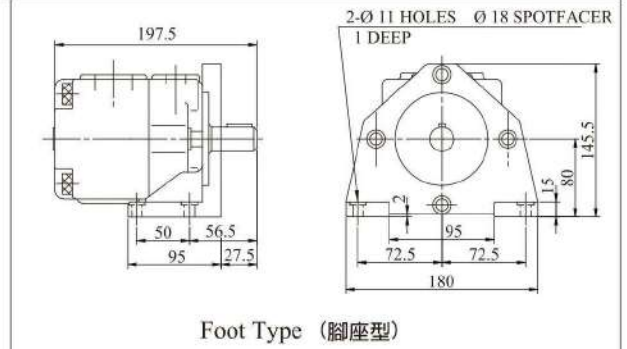
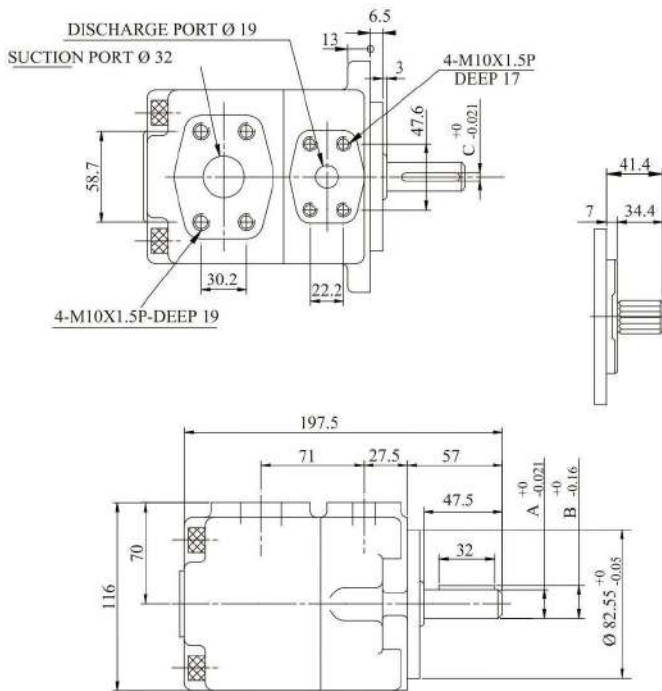


DVQ Series Single Pump Dimensional Drawing

DVQ 系列單泵外型尺寸圖

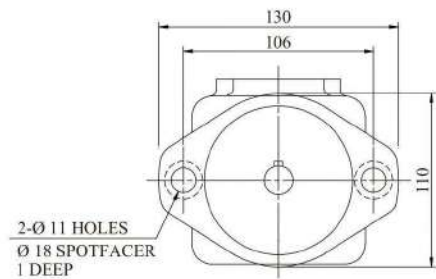
DVQ20

Max. Pressure: 260 Kgf/cm² (Peak)
Max. Speed: 1800 rpm



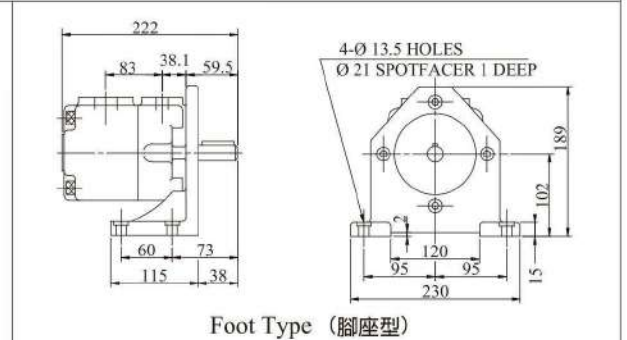
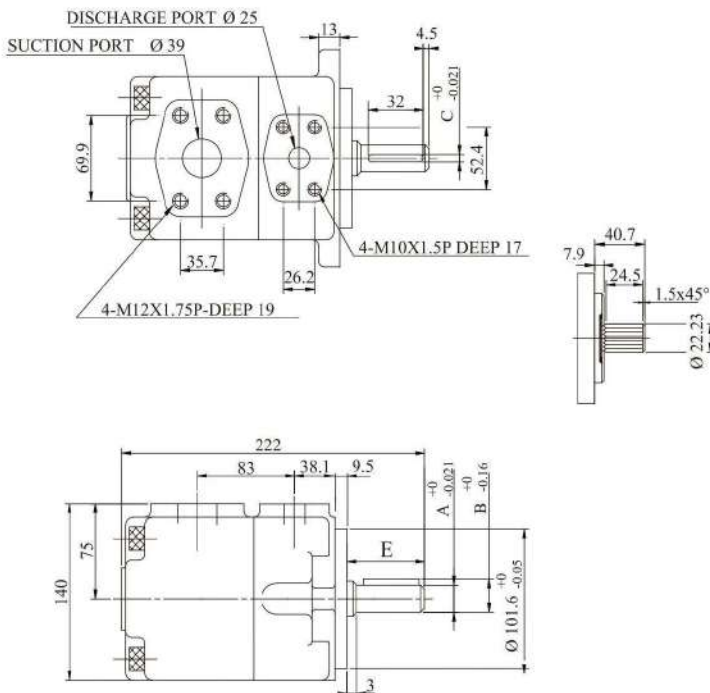
NO.04-Shaft
13-Teeth Spline
7/8" (22.225)DIA
30° pressure angle
Flat root side fit

	A	B	C
NO.01-Shaft	Ø 19.05	21.24	4.76
NO.02-Shaft	Ø 22.23	24.5	4.76
NO.03-Shaft	Ø 22.23	25.01	6.35
NO.04-Shaft	Spline shaft		



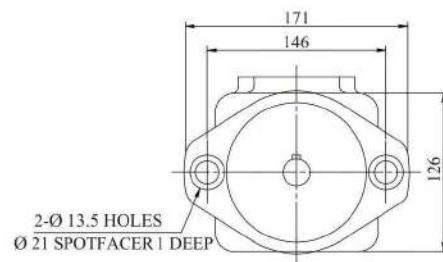
DVQ25

Max. Pressure: 260 Kgf/cm² (Peak)
Max. Speed: 1800 rpm



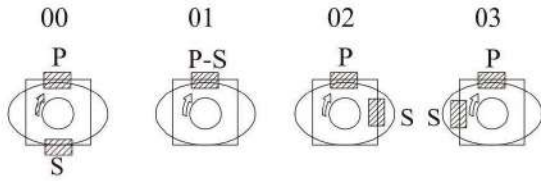
NO.04-Shaft
16/32 d.p.
-13 teeth
30° pressure angle
Flat root side fit.

	A	B	C	E
NO.01-Shaft	Ø 22.23	24.5	6.35	50.5
NO.02-Shaft	Ø 25.4	28.18	6.35	50.5
NO.03-Shaft	Ø 30.0	33.0	7.0	59
NO.04-Shaft	Spline shaft			
NO.W-Shaft	Ø 28.0	30.8	6.35	50.5



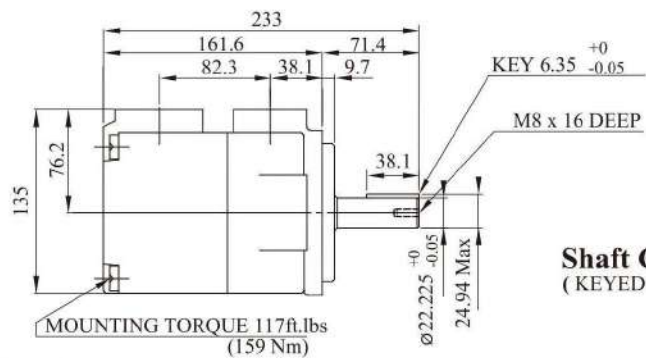
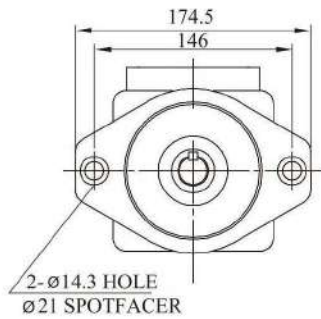
T6C Dimensional Drawing

Port Type

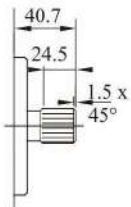


S=Suction port P=Pressure port

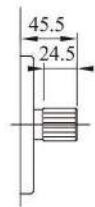
Dimension



Shaft Code 1
(KEYED SAE B)

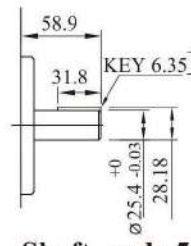


Shaft code 3
SAE B splined shaft
Class 1-J498 b 16/32
d.p. -13 teeth 30°
pressure angle flat root
side fit



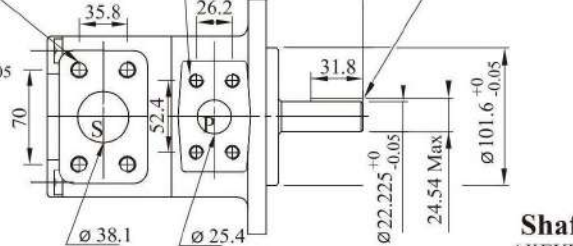
Shaft code 4
SAE BB splined shaft
Class 1-J498 16/32
d.p. -15 teeth 30°
pressure angle flat
root side fit

1/2"-13UNC x 0.88 deep-4
(M12 x 22.4)



Shaft code 5

3/8"-16UNC x 0.75 deep-4
(M10 x 19)

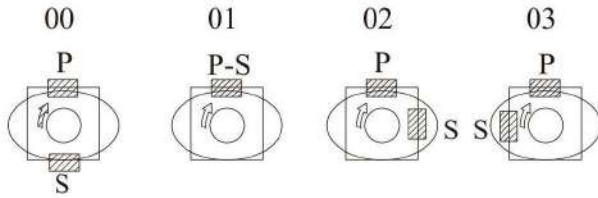


Shaft Code 2
(KEYED NO SAE)

Shaft torque limits(mℓ/rev x bar)		
Pump	Shaft	Vp x p max
T6C	1	16500
	2	14300
	3	20600
	4	20600

T6D Dimensional Drawing

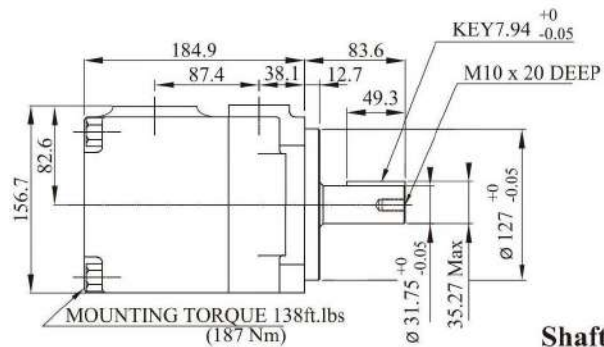
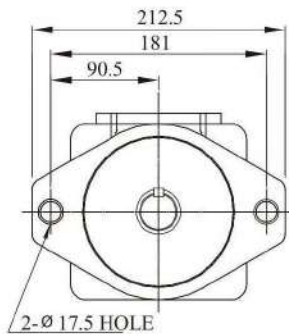
Ports Type



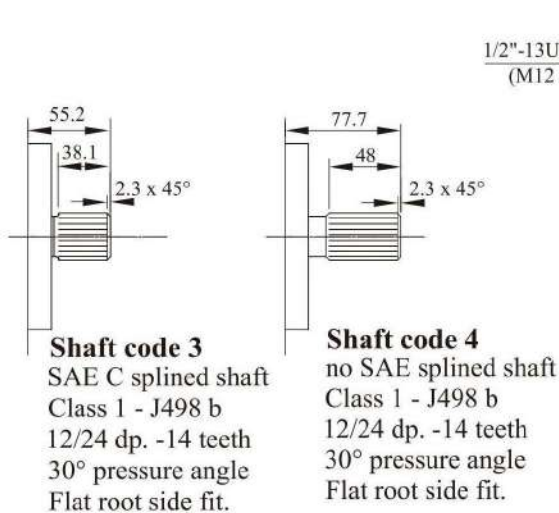
S=Suction port

P=Pressure port

Dimension

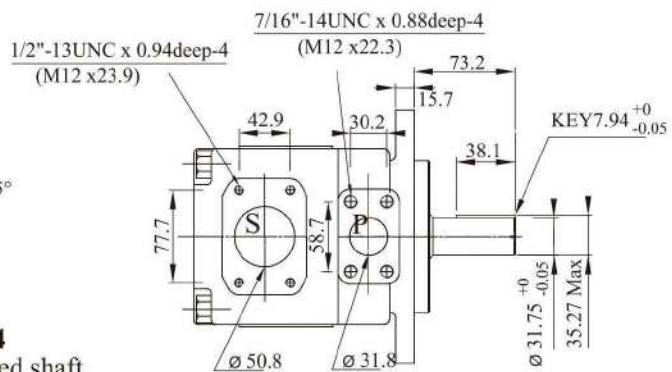


Shaft Code 1
(Keyed SAE C)



Shaft code 3
SAE C splined shaft
Class 1 - J498 b
12/24 dp. -14 teeth
30° pressure angle
Flat root side fit.

Shaft code 4
no SAE splined shaft
Class 1 - J498 b
12/24 dp. -14 teeth
30° pressure angle
Flat root side fit.

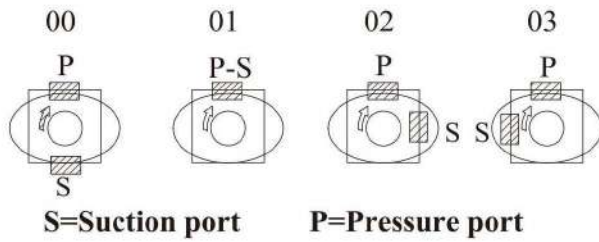


Shaft Code 2
(Keyed no SAE)

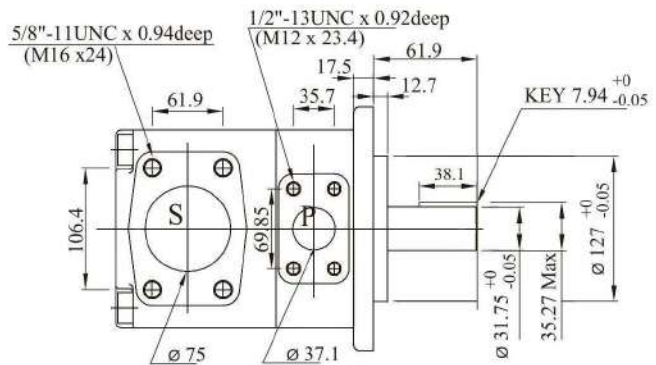
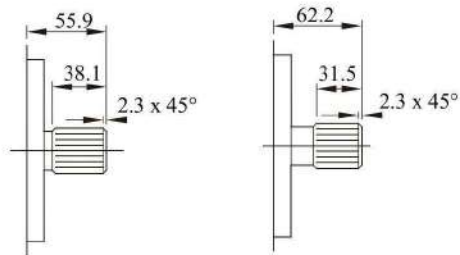
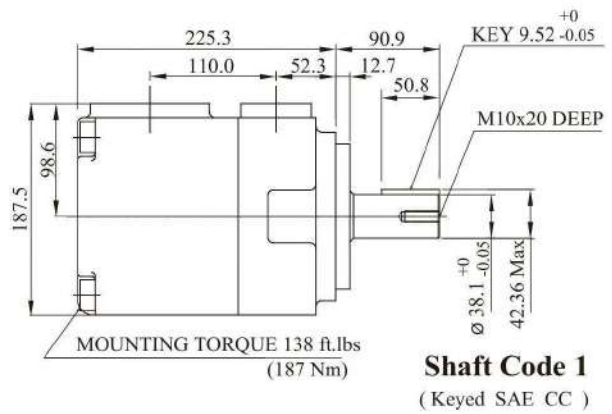
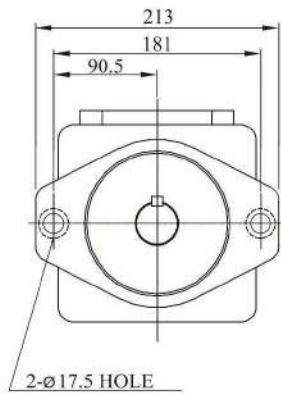
Shaft torque limits (mℓ/rev x bar)		
Pump	Shaft	Vp x p max
T6D	1	43283
	2	34590
	3	61200
	4	61200

T6E Dimensional Drawing

Ports Type



Dimension



Shaft code 3

SAE C Splined shaft
class 1 - J498b 12/24
dp. -14 teeth 30°
pressure angle. Flat root
side fit.

Shaft code 4

SAE CC Splined shaft
class 1 - J498b 12/24
dp. -17 teeth 30°
pressure angle. Flat root
side fit.

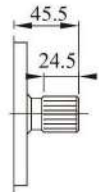
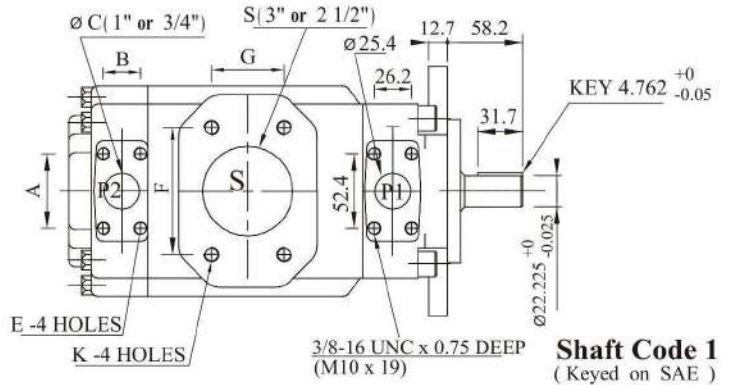
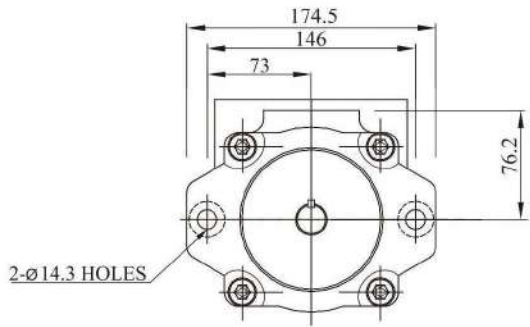
Shaft Code 2

(Keyed no SAE)

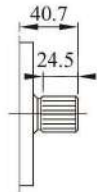
shaft torque limits(mℓ/rev x bar)		
Pump	Shaft	Vp x P max.
T6E	1	54555
	2	34590
	3	61200
	4	61200

T6CC Dimensional Drawing

Dimension



Shaft code 3
SAE BB Splined shaft
class 1 - J498 b 16/32
dp. -15 teeth 30°
pressure angle. Flat root
side fit.

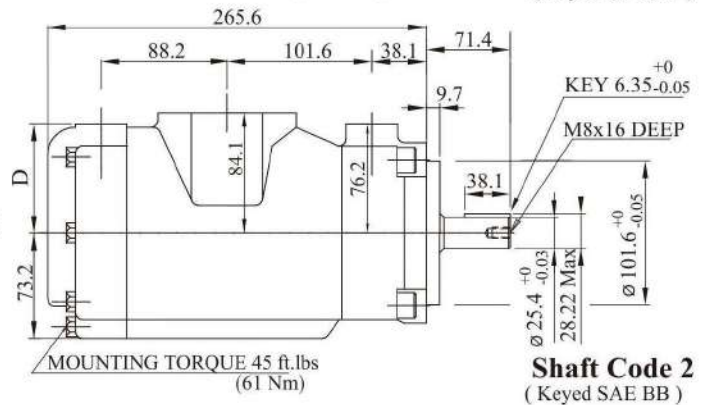


Shaft code 5
SAE B Splined shaft
class 1 - J498 b 16/32
dp. -13 teeth 30°
pressure angle. Flat root
side fit.



Shaft code S

DIN 5462
B8x32x36



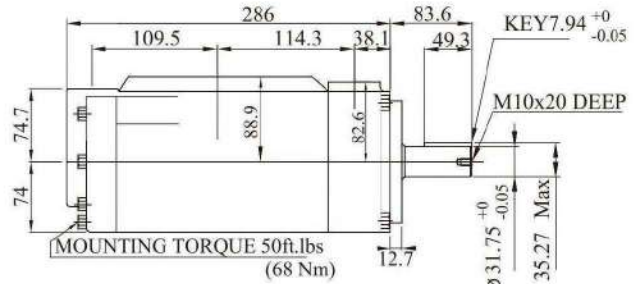
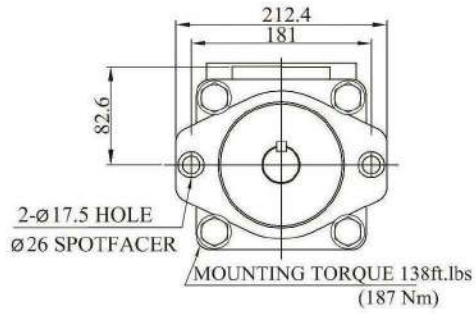
Shaft Code 2
(Keyed SAE BB)

Alternate Port									
S = 3"				S = 2 1/2"					
F	106.4				88.9				
G	61.9				50.8				
øH	76.2				63.5				
Code	00	01	0M	W0	10	11	1M	W1	
A	52.4	47.6	52.4	47.6	52.4	47.6	52.4	47.6	
B	26.2	22.2	26.2	22.2	26.2	22.2	26.2	22.2	
øC	25.4	19.0	25.4	19.0	25.4	19.0	25.4	19.0	
D	74.7	76.2	74.7	76.2	74.7	76.2	74.7	76.2	
E	3/8"-16UNCx19 deep		M10x19 deep		3/8"-16UNCx19 deep		M10x19 deep		
K	5/8"-11UNCx28.4 deep		M16x28.4 deep		1/2"-13UNCx23.9 deep		M12x24.0 deep		

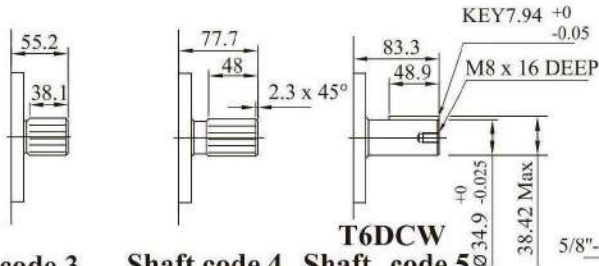
Shaft torque limits(mℓ/rev x bar)		
Pump	Shaft	Vp x p max.P1+P2
T6CC	1	14300
	2	21420
	3	32670
	5	20600

T6DC Dimensional Drawing

Dimension



Shaft Code 1
(Keyed SAE C)



Shaft code 3

SAE C Splined shaft
class 1 - J498b
12/24 d.p. -14 teeth
30° pressure angle.
Flat root side fit.

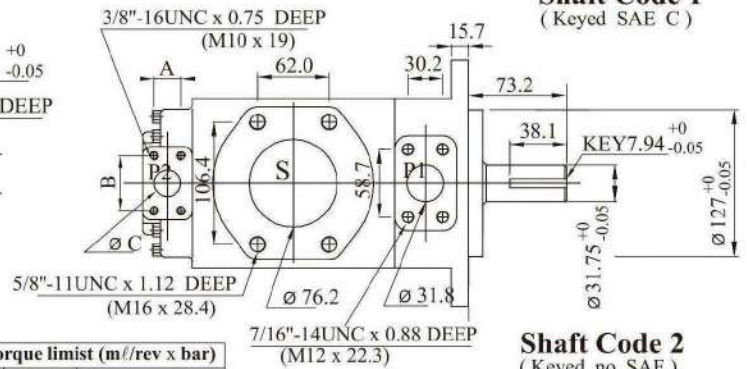
Shaft code 4

NO SAE Splined
shaft class 1 - J498
b 12/24 d.p. -14
teeth 30° pressure
angle. Flat root side
fit.

Shaft code 5

(Keyed no SAE)

T6DCW



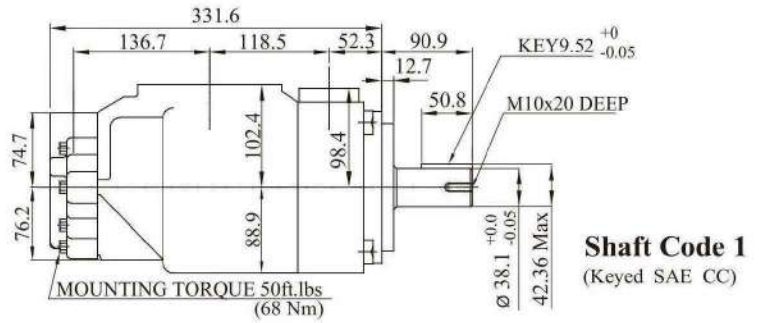
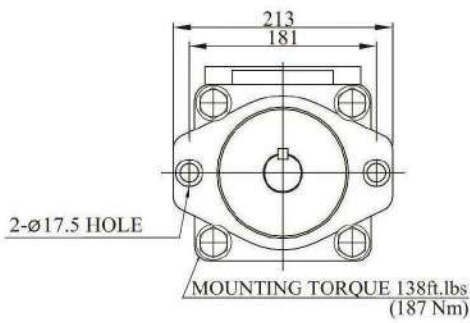
Shaft Code 2
(Keyed no SAE)

Shaft torque limist (m//rev x bar)		
Pump	Shaft	Vp x p max.P1+P2
T6DC	1	43240
	2	34590
	3	61200
	4	61200
	5	55600

Alternate connect. variables		
	00 & M0	01 & M1
A	1.031 (26.2)	0.874 (22.2)
B	2.06 (52.4)	1.874 (47.6)
C	1.0 (25.4)	0.75 (19.05)

T6EC Dimensional Drawing

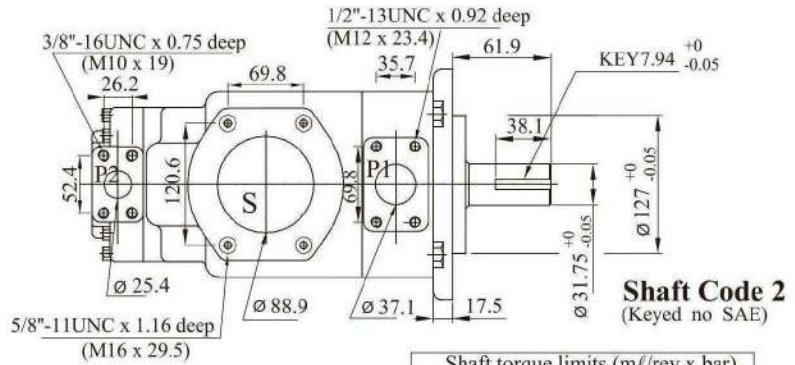
Dimension



Shaft code 3
SAE C Splined shaft
class 1 - J498 b
12/24 dp. -14 teeth
30° pressure angle.
Flat root side fit.



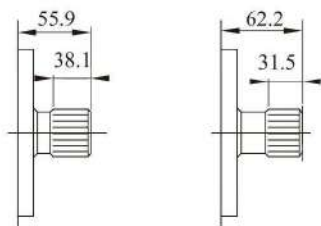
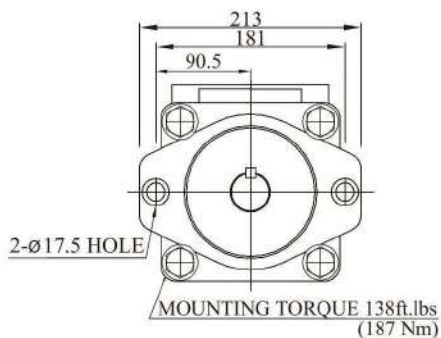
Shaft code 4
SAE CC Splined shaft
class 1 - J498 b
12/24 dp. -17 teeth
30° pressure angle.
Flat root side fit.



Shaft torque limits (mℓ/rev x bar)		
Pump	Shaft	Vp x p max.P1+P2
T6EC	1	72306
	2	34590
	3	61200
	4	76376

T6ED Dimensional Drawing

Dimension

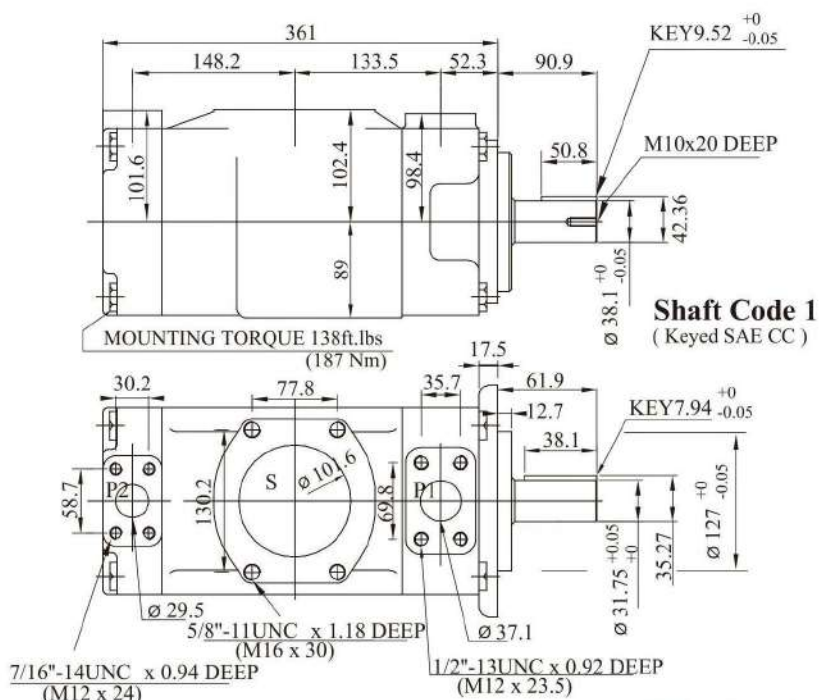


Shaft code 3

SAE C Splined shaft
class 1 - J498 b
12/24 dp. -14 teeth
30° pressure angle.
Flat root side fit.

Shaft code 4

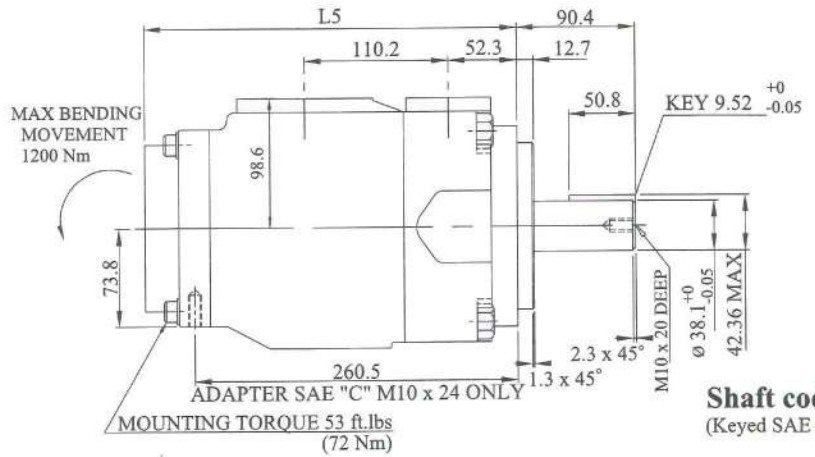
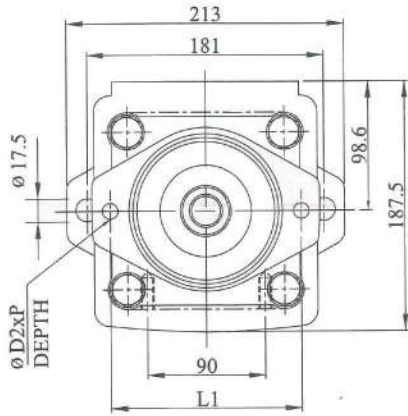
SAE CC Splined
shaft class 1 - J498 b
12/24 dp. -17 teeth
30° pressure angle.
Flat root side fit.



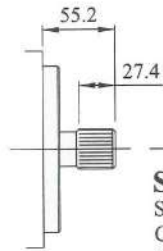
Shaft torque limits (mℓ/rev x bar)		
Pump	Shaft	Vp x p max.P1+P2
T6ED	1	72306
	2	34590
	3	61200
	4	76376

T6ER Dimensional Drawing

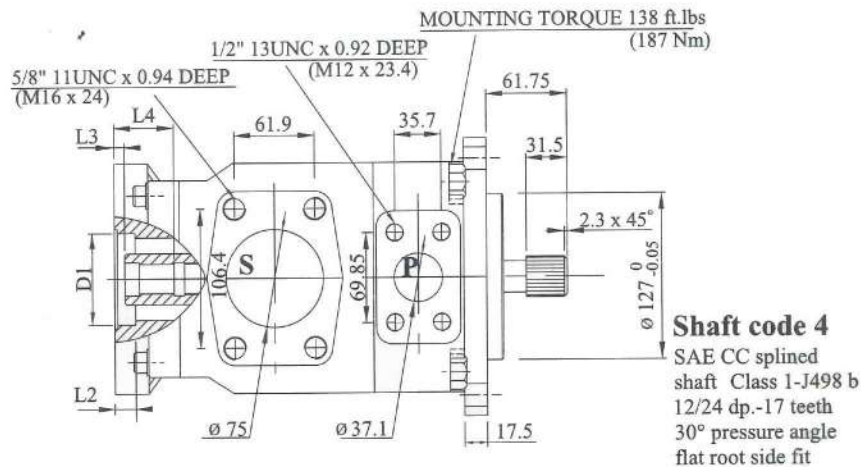
Dimension



Shaft code 1
(Keyed SAE CC)



Shaft code 3
SAE C splined shaft
Class 1-J498 b
12/24 dp.-14 teeth
30° pressure angle
flat root side fit



Shaft code 4
SAE CC splined shaft
Class 1-J498 b
12/24 dp.-17 teeth
30° pressure angle
flat root side fit

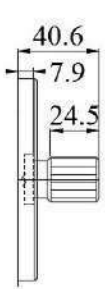
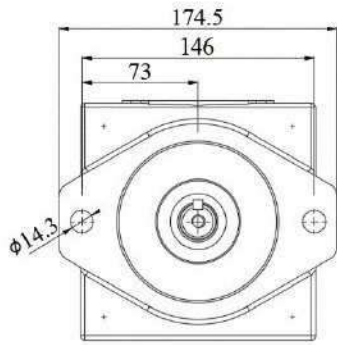
Shaft torque limits (mℓ/rev x bar)			
Shaft	V x p max.	Coupling drive	Vp x p max.
1	80560	SAE A	11000
3	61200	SAE B	20600
4	120210	SAE BB	32670
		SAE C	66480
		SAE -11 teeth	15850

Adapter	SAE "A"			SAE "B"		SAE "C"
	SAE A	SAE 11 teeth	SAE B	SAE B	SAE BB	SAE C
Coupling drive	SAE A	SAE 11 teeth	SAE B	SAE B	SAE BB	SAE C
Number of teeth	9	11	13	13	15	14
Pitch	16/32	16/32	16/32	16/32	16/32	12/24
Pressure angle	30°	30°	30°	30°	30°	30°
Major dia.(min)	15.875	19.05	22.225	22.225	25.400	31.750
Minor dia.(min)	12.700	16.0	19.134	19.134	22.268	27.585

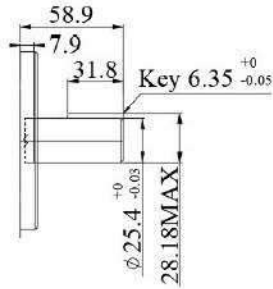
Adapter	D1	D2	P	L1	L2	L3	L4	L5
SAE A	82.65/82.60	M10	24	106.4	11.0	7.9	32.0	272.0
SAE B	101.70/101.65	M12	28	146.0	16.0	7.9	46.0	286.0
SAE C	127.10/127.05	M16	—	181.0	16.0	7.9	56.0	296.0

4SMP Dimensions

4SMP Dimensional Drawing



Shaft code 3



Shaft code 5

SAE B

Splined Shaft

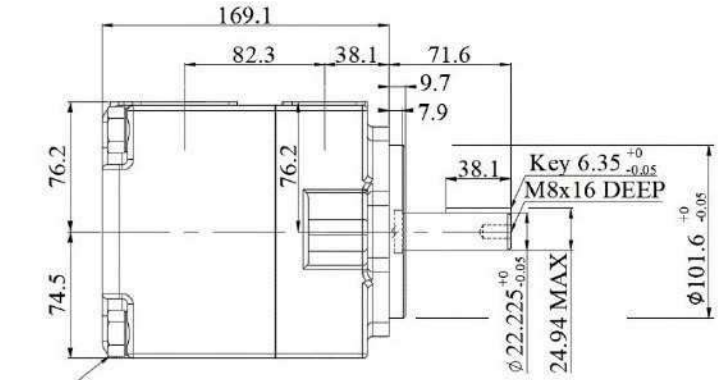
Class 1-J498 b

16/32 dp.-13 teeth

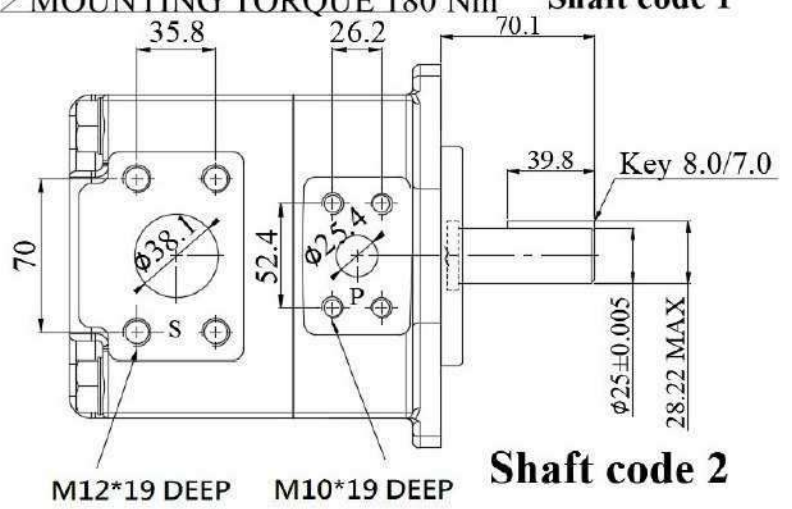
30° Pressure angle.

Flat root side fit.

心軸扭力限制 (mL/rev x bar)	
Shaft	Vp x P max
1	16516
2	20620
3	20620
5	20620



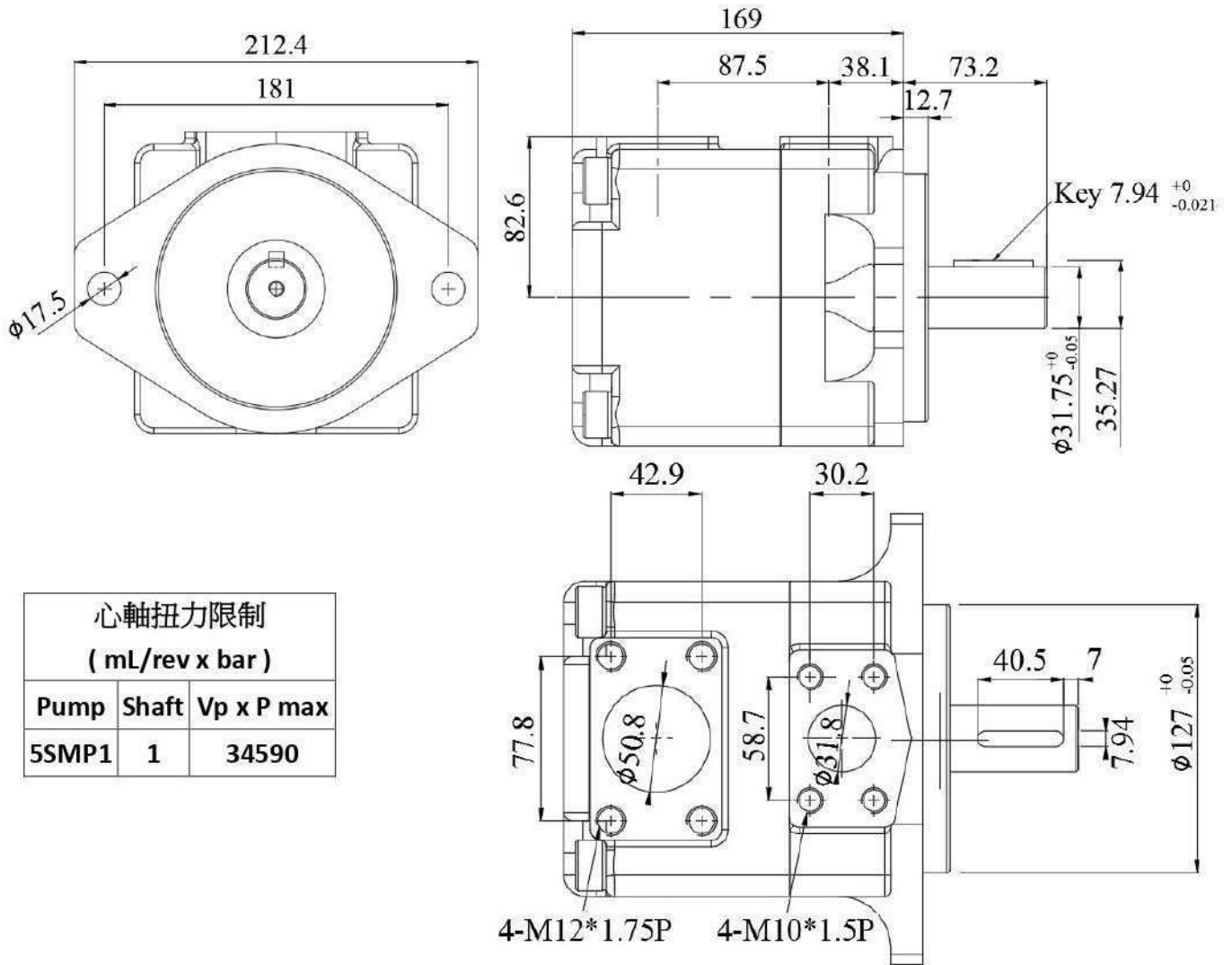
MOUNTING TORQUE 180 Nm Shaft code 1



Shaft code 2

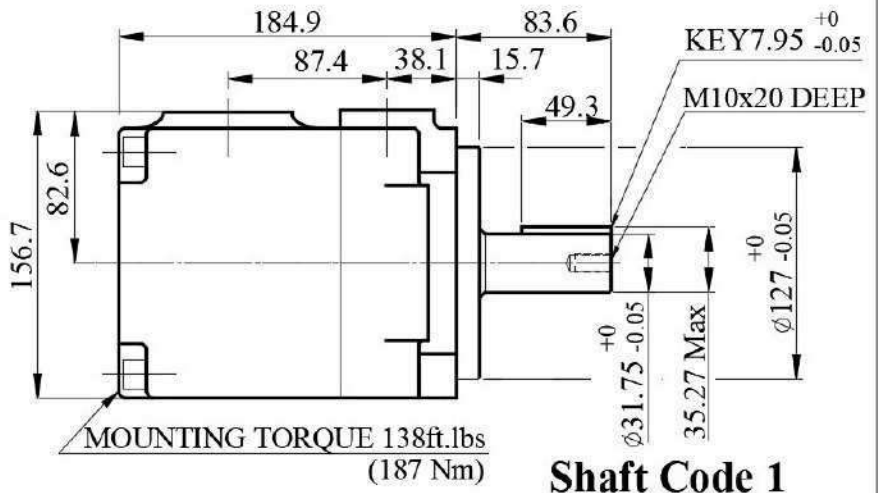
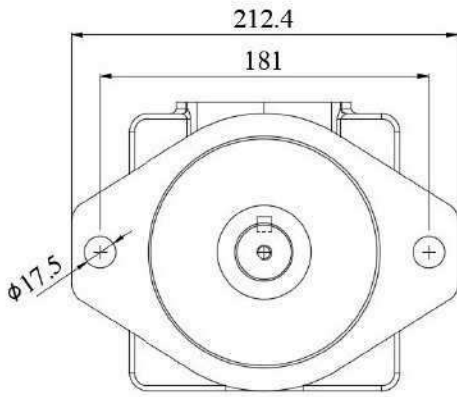
5SMP1 Dimensions

5SMP1 Dimensional Drawing



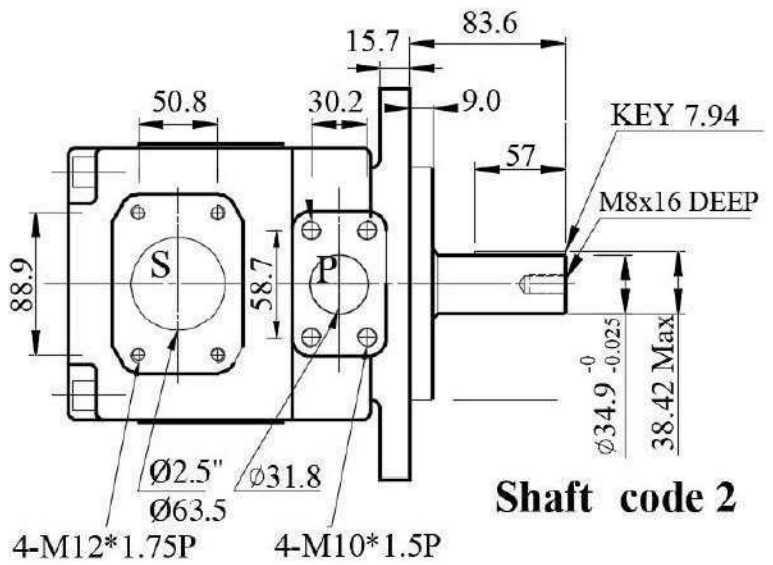
5SMP2 Dimensions

5SMP2 Dimensional Drawing



Shaft Code 1

心軸扭力限制 (mL/rev x bar)		
Pump	Shaft	Vp x P max
5SMP2	1	43283
	2	51684



Shaft code 2

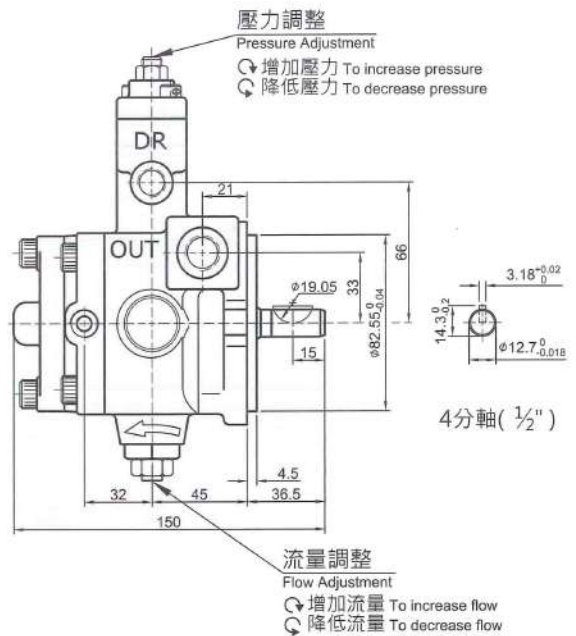
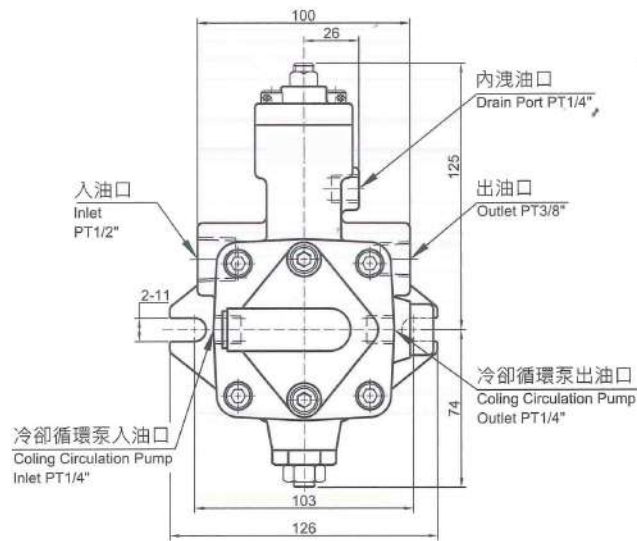
Variable Displacement Vane Pump With Cooling Circulation Pump

變量葉片泵附循環泵系列

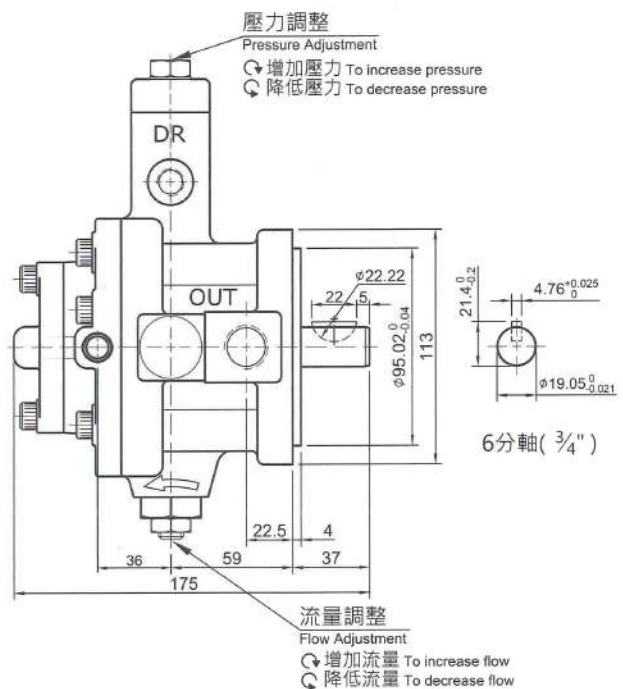
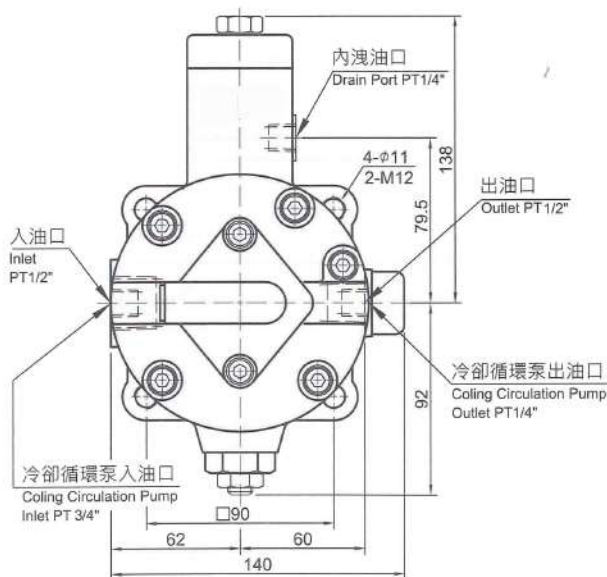
VCM-SF/CG
SM

外型尺寸 / MEASUREMENT

VCM - SF - 12 - ※ - ※CG - 20

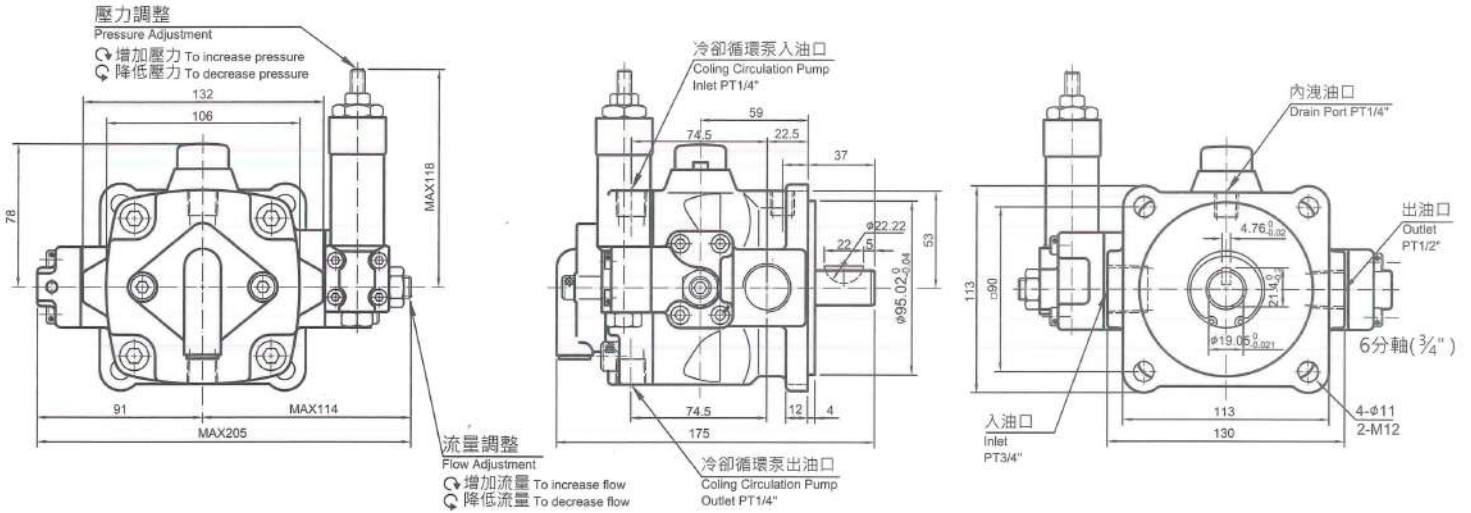


VCM - SF - 30 - ※ - ※CG - 30



外型尺寸 / MEASUREMENT

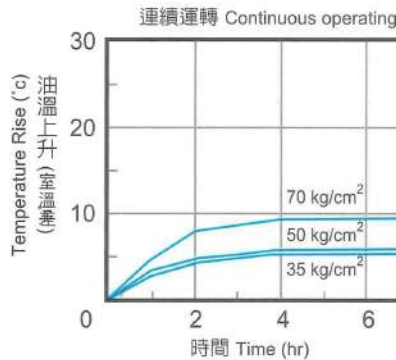
VCM - SM - 30 ※ - 4CG - 20



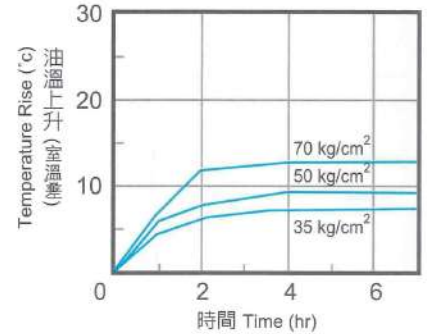
性能曲線圖 / PERFORMANCE CURVES

VCM - SF - 20 ※ - 4CG - 20

測試條件 Testing condition
 操作用油 Hydraulic oil: ISO VG32
 馬達轉速 Speed: 1800 rpm
 油箱容積 Capacity of tank: 30L
 室溫 Ambient Temperature: 30°C

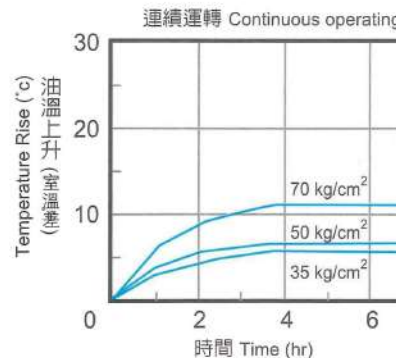


Continuous operated cylinder (Ø20xØ40x250mm)
 W/cylinder working cycle: 12 strokes/min.
 連續操作CYLINDER (Ø20xØ40x250mm)
 作動頻率12次往返 / 每分鐘



VCM - SF - SM - 30 ※ - 4CG - 30

測試條件 Testing condition
 操作用油 Hydraulic oil: ISO VG32
 馬達轉速 Speed: 1800 rpm
 油箱容積 Capacity of tank: 40L
 室溫 Ambient Temperature: 30°C



Continuous operated cylinder (Ø20xØ40x250mm)
 W/cylinder working cycle: 12 strokes/min.
 連續操作CYLINDER (Ø20xØ40x250mm)
 作動頻率12次往返 / 每分鐘

