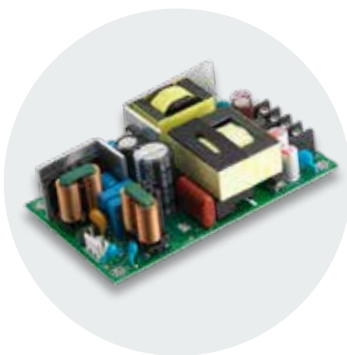
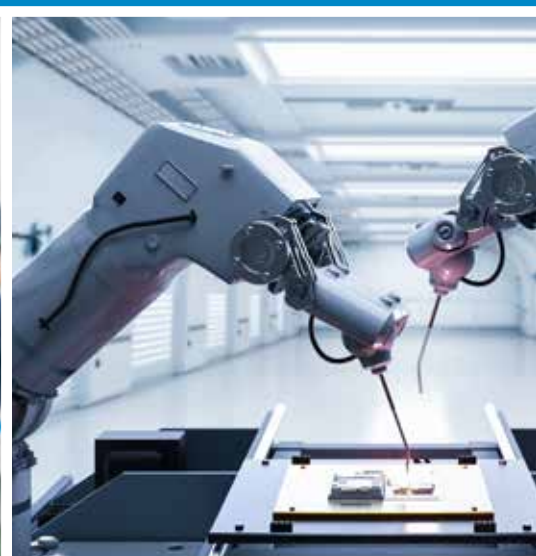


Innovative Power Supply Solution




Industrial

NEW

MPI-G500
(-SB)(-C, F)
Series




Model Number	Output					Input		
	Rated Power	Voltage	Rated Current	Max Current	Peak	Voltage	Frequency	Efficiency
MPI-G503	500W 	+12 Vdc	25 A	41.67A	46.6A	80-264 Vac	47~63 Hz	Up to 95%
MPI-G505		+24 Vdc	12.5A	20.83A	23.3A			
MPI-G506		+48 Vdc	6.25A	10.42A	11.65A			
*-SB: 5Vsb	*-C: Chassis *-F: Fan	<ul style="list-style-type: none"> Operating Temperature: -25°C ~ +80°C Dimension: 127.0(L) x 76.2(W) x 38.0(H) mm Safety Approved: UL/EN 62368-1 						

NEW


MPI-G400
Series



Model Number	Output					Input		
	Rated Power	Voltage	Rated Current	Max Current	Peak	Voltage	Frequency	Efficiency
MPI-G403	400W 	+12 Vdc	20.83A	33.33A	-	80-264 Vac	47~63 Hz	Up to 94%
MPI-G405	250W	+24 Vdc	10.41A	16.67A				
<ul style="list-style-type: none"> Operating Temperature: -25°C ~ +80°C Dimension: 126.9(L) x 76.2(W) x 33.0(H) mm Safety Approved: EN 62368-1 								


MPE-S200
Series



Model Number	Output					Input		
	Rated Power	Voltage	Rated Current	Max Current	Peak	Voltage	Frequency	Efficiency
MPE-S203	200W 	+12 Vdc	12.5A	16.6A	-	85-264 Vac	47~63 Hz	Up to 92%
MPE-S205		+24 Vdc	6.25A	8.33A				
MPE-S206		+48 Vdc	3.125A	4.16A				
<ul style="list-style-type: none"> Operating Temperature: -20°C ~ +80°C Dimension: 101.6 (L) x 50.8 (W) x 37.6 (H) mm Safety Approved: UL/IEC 62368-1, 2nd edition 								


MPE-S150
Series



Model Number	Output					Input		
	Rated Power	Voltage	Rated Current	Max Current	Peak	Voltage	Frequency	Efficiency
MPE-S153	150W 	+12 Vdc	8.33A	12.5A	16.67A	85~264 Vac	47~63 Hz	Up to 90%
MPE-S155		+24 Vdc	4.17A	6.25A	8.33A			
MPE-S156		+48 Vdc	2.08A	3.125A	4.16A			
<ul style="list-style-type: none"> Operating Temperature: -20°C ~ +80°C Dimension: 101.6(L) x 50.8(W) x 25.4(H) mm Safety Approved: UL 62368-1 								

MPE-S130
(-SB)(-C)
Series



Model Number	Output					Input		
	Rated Power	Voltage	Rated Current	Max Current	Peak	Voltage	Frequency	Efficiency
MPE-S133	130W 	+12 Vdc	8.33A	10.8A	-	85-264 Vac	47~63 Hz	Up to 90%
MPE-S135		+24 Vdc	4.2A	5.4A				
MPE-S136		+48 Vdc	2.1A	2.7A				
*-SB: 5Vsb	*-C: Chassis	<ul style="list-style-type: none"> Operating Temperature: -20°C ~ +80°C Dimension: 101.6 (L) x 50.8 (W) x 34.2 (H) mm Safety Approved: UL/IEC/EN 62368-1, 2nd edition ; UL/IEC/EN 60950-1, 2nd edition 						

■ Specification is subject to change without prior notice, please contact us for details.

Industrial

MPE-S080
(-SB)(-C)
Series



Model Number	Output					Input		
	Rated Power	Voltage	Rated Current	Max Current	Peak	Voltage	Frequency	Efficiency
MPE-S083	80W 65W	+12 Vdc	5.4A	6.7A	-	85~264 Vac	47~63 Hz	Up to 90%
MPE-S084		+15 Vdc	4.3A	5.4A				
MPE-S085		+24 Vdc	2.7A	3.3A				
MPE-S086		+48 Vdc	1.35A	1.7A				
*-SB: 5Vsb	*-C: Chassis	<ul style="list-style-type: none"> Operating Temperature: -20°C ~ +80°C Dimension: 101.6 (L) x 50.8 (W) x 34.2 (H) mm Safety Approved: UL/IEC/EN 62368-1, 2nd edition ; UL/IEC/EN 60950-1, 2nd edition 						

NEW

MPE-F060
Series



Pencil-Thin

Model Number	Output					Input		
	Rated Power	Voltage	Rated Current	Max Current	Peak	Voltage	Frequency	Efficiency
MPE-F063	60W	+12 Vdc	5A	-	10A	80-264 Vac	47~63 Hz	Up to 95%
MPE-F065		+24 Vdc	2.5A	-	5A			
MPE-F066		+48 Vdc	12.5A	-	2.5A			
<ul style="list-style-type: none"> Operating Temperature: -20°C ~ +70°C Dimension: 101.6(L) x 50.8(W) x 25.4(H) mm Safety: EN 62368-1 (Applying) 								

MPE-J060
Series



Model Number	Output					Input		
	Rated Power	Voltage	Rated Current	Max Current	Peak	Voltage	Frequency	Efficiency
MPE-J062	30/35W	+5 Vdc	6A	7A	-	80-264 Vac	47~63 Hz	Up to 90%
MPE-J063	65W 50W	+12 Vdc	4.16A	5.42A				
MPE-J065		+24 Vdc	2.08A	2.71A				
MPE-J066		+48 Vdc	1.04A	1.35A				
<ul style="list-style-type: none"> Operating Temperature: -40°C ~ +80°C Dimension: 76.2(L) x 50.8(W) x 25.0(H)mm Safety Approved: UL/IEC/EN 62368-1, 2nd edition 								

MPE-J020
Series



Model Number	Output					Input		
	Rated Power	Voltage	Rated Current	Max Current	Peak	Voltage	Frequency	Efficiency
MPE-J022	20W	+5 Vdc	4A	4A	-	80-264 Vac	47~63 Hz	Up to 86%
MPE-J023	25W	+12 Vdc	2.08A	2.08A				
MPE-J025		+24 Vdc	1.04A	1.04A				
MPE-J026		+48 Vdc	0.52A	0.52A				
<ul style="list-style-type: none"> Operating Temperature: -30°C ~ +80°C Dimension: 63.5 (L) x 50.8 (W) x 24.6 (H) mm Safety Approved: UL/IEC/EN 62368-1, 2nd edition 								

NEW

MPT-C0X0
Series



Encapsulated Model

Model Number	Output					Input		
	Rated Power	Voltage	Rated Current	Max Current	Peak	Voltage	Frequency	Efficiency
MPT-C020	20W	+12/24/48 Vdc	1.67/ 0.83/ 0.42A	-	-	90~264 Vac	50~60 Hz	Up to 90%
MPT-C030	30W	+12/24/48 Vdc	2.1/ 1.05/ 0.52A	-	-			
MPT-C040	40W	+12/24/48 Vdc	3.34/ 1.67/ 0.83A	-	-			
MPT-C060	60W	+12/24/48 Vdc	5/ 2.5/ 1.25A	-	-			
<ul style="list-style-type: none"> Operating Temperature: -40°C ~ +80°C Dimension: <ul style="list-style-type: none"> MPT-C020 Series 63.0 (L) x 35.6 (W) x 23.70 (H) mm MPT-C030 Series 53.10 (L) x 30.30 (W) x 24.80 (H) mm MPT-C040 Series 54.37 (L) x 54.37 (W) x 26.5 (H) mm MPT-C060 Series 54.25 (L) x 54.25 (W) x 35.8 (H) mm Safety Approved: UL/IEC 62368-1 								

■ Specification is subject to change without prior notice, please contact us for details.

Medical

MPM-U650
Series



Model Number	Output							Input				
	Rated Power	Voltage			Rated Current			Max Current	Peak	Voltage	Frequency	Efficiency
		V1	V2	V3	V1	V2	V3					
MPM-U653	750W 650W	+12 Vdc	+5.1V	-12V	54.2A	2A	0.2A	10.8 A	62.5A	85-264 Vac	47~63 Hz	Up to 93%
MPM-U655		+24 Vdc	+5.1V	-12V	27.1A	2A	0.2A	5.4 A	31.3A			
MPM-U656		+48 Vdc	+5.1V	-	13.6A	2A	-	2.7 A	15.7A			

- Operating Temperature: -20°C ~ +70°C
- Dimension: 229 (L) x 127 (W) x 65 (H) mm
- Safety Approved: UL/IEC/EN 60601-1

MPM-842P-F



Model Number	Rated Power	Output				Input			
		Voltage		Rated Current	Max Current	Peak	Voltage	Frequency	Efficiency
MPM-842P-F	450W 400W	V1	+5 Vdc	16.0 A	21.0A	-	90-264 Vac	47~63 Hz	75%
		V2	+12 Vdc	21.0A	22.0A	25.0A			
		V3	-12 Vdc	0.8A	-	-			
		V4	+3.3 Vdc	16.0A	22.0A	-			
		V5	+5 VsB	0.75A	1.5A	-			

- Operating Temperature: 0°C ~ +70°C
- Dimension: 150 (L) x 140 (W) x 86 (H) mm
- Safety Approved: UL/IEC 60601-1

MPM-K450
(-SB)(-1,2,F,C)
Series

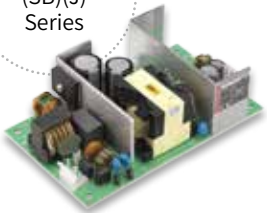


Model Number	Rated Power	Output				Input		
		Voltage	Rated Current	Max Current	Peak	Voltage	Frequency	Efficiency
MPM-K453	400~450W 300W	+12Vdc	25 A	37.5A	-	85-264 Vac	47~63 Hz	Up to 95%
MPM-K455		+24Vdc	12.5A	18.75A				
MPM-K456		+48Vdc	6.25A	9.38A				

*-SB: 5Vsb

- *-1: Class I
- *-2: Class II
- *-C: Chassis
- *-F: Fan
- Operating Temperature: -30°C ~ +70°C
- Dimension: 152.4 (L) x 101.6 (W) x 37.6/40.1 (H) mm
- Safety Approved: UL/IEC 60601-1 ; IEC/EN 62368-1

MPM-S120
(SB)(J)
Series



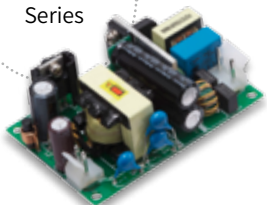
Model Number	Rated Power	Output				Input		
		Voltage	Rated Current	Max Current	Peak	Voltage	Frequency	Efficiency
MPM-S123	135W 120W	+ 12 Vdc	10 A	11.25 A	-	85-264 Vac	47~63 Hz	Up to 91%
MPM-S125		+ 24 Vdc	5 A	5.6 A				
MPM-S126		+ 48 Vdc	2.5 A	2.8 A				
MPM-S127		+ 36 Vdc	3.3 A	3.75 A				

*-SB: 5Vsb

*-J: Jst Connector

- Operating Temperature: -20°C ~ +70°C
- Dimension: 127 (L) x 76.2 (W) x 40.7 (H) mm
- Safety Approved: UL/IEC/EN 60601-1

MPM-S050
Series



Model Number	Rated Power	Output				Input		
		Voltage	Rated Current	Max Current	Peak	Voltage	Frequency	Efficiency
MPM-S053	60W 50W	+ 12 Vdc	4.16 A	5.0 A	-	85-264 Vac	47~63 Hz	Up to 88%
MPM-S055		+ 24 Vdc	2.08 A	2.5 A				
MPM-S056		+ 48 Vdc	1.04 A	1.25 A				

- Operating Temperature: -20°C ~ +80°C
- Dimension: 76.2 (L) x 50.8 (W) x 26.1 (H) mm
- Safety Approved: UL/IEC/EN 60601-1

■ Specification is subject to change without prior notice, please contact us for details.

DC/DC

MPD-830C
Series



Model Number	Output						Input					
	Rated Power	Voltage		Rated Current	Max Current	Peak	Voltage			Frequency	Efficiency	
		V1	V2				Min.	Typ.	Max.			
MPD-830C	300W	V1	+5 Vdc	25.0 A	30.0 A	-	+19 Vdc	-	+32 Vdc	-	65%	
		V2	+12 Vdc	10.0 A	15.0 A							25.0A
		V3	-12 Vdc	1.0 A	2.0 A							-
		V4	-5 Vdc	1.0 A	2.0 A							-
		V5	+3.3 Vdc	8.0 A	15.0 A							-

- Operating Temperature: 0°C ~+70°C (Start-UP: 20°C)
- Dimension: 150.0 (L) x 140.0 (W) x 86.2 (H) mm
- Safety Approved: EN 62368-1, 2nd edition ; UL/EN 60950-1, 2nd edition

MPU-D205
(UPS)
Series



Model Number	Output						Input			
	Rated Power	Voltage	Rated Current	Max Current	Peak	Voltage			Frequency	Efficiency
						Min.	Typ.	Max.		
MPU-D205	250W 200W (10 sec)	+24 V	8.33A	-	12A	+21.6 Vdc	+24 Vdc	+25.2 Vdc	-	Up to 95%

- Operating Temperature: -20°C ~+60°C
- Dimension: 127.0 (L) x 76.2 (W) x 32.0 (H) mm
- Output Voltage: (Normal mode: Vin - 0.5V, Battery mode: +20.2 to 27.9V)

MPD-G203
(-C)(-F)
Series

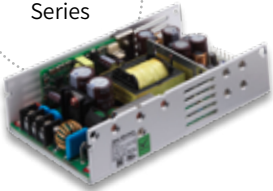


Model Number	Output						Input			
	Rated Power	Voltage	Rated Current	Max Current	Peak	Voltage			Frequency	Efficiency
						Min.	Typ.	Max.		
MPD-G203 (-C, F)	200W 150W	+12 Vdc	12.5 A	16.67 A	-	+9 Vdc	+12/24 Vdc	+32 Vdc	56K Hz	Up to 90%

*-C: Chassis
*-F: Fan

- Operating Temperature: -10°C ~+70°C
- Dimension: 127(L) x 76.2(W) x 38.7(H) mm
- Safety Approved: UL/IEC/EN 62368-1, 2nd edition

MPD-810H
Series



Model Number	Output						Input				
	Rated Power	Voltage		Rated Current	Max Current	Peak	Voltage			Frequency	Efficiency
		V1	V2				Min.	Typ.	Max.		
MPD-810H	120W 85W	V1	+5 Vdc	8.0 A	10.0 A	-	+10 Vdc	+12/24 Vdc	+30 Vdc	-	70%
		V2	+12 Vdc	1.5 A	4.0 A						
		V3	-12 Vdc	0.5 A	1.0 A						
		V4	+3.3 Vdc	5.0 A	8.0 A						
		V5	+5 VsB	0.75 A	-						

- Operating Temperature: 0°C ~+50°C
- Dimension: 141.6 (L) x 83.8 (W) x 38.0 (H) mm
- Safety Approved: EN 62368-1 ; UL 60950-1

MPD-S100
Series



Model Number	Output						Input			
	Rated Power	Voltage	Rated Current	Max Current	Peak	Voltage			Frequency	Efficiency
						Min.	Typ.	Max.		
MPD-S103	100W 70W	+12 Vdc	5.8 A	8.3 A	-	+19 Vdc	-	+32 Vdc	65K Hz	Up to 90%
MPD-S105		+24 Vdc	2.9 A	4.2 A						
MPD-S108		+19 Vdc	3.6 A	5.2 A						

- Operating Temperature: 0°C ~+70°C
- Dimension: 150.0 (L) x 140.0 (W) x 86.2 (H) mm
- Safety Approved: EN 62368-1, 2nd edition ; UL/EN 60950-1, 2nd edition

Specification is subject to change without prior notice, please contact us for details.